

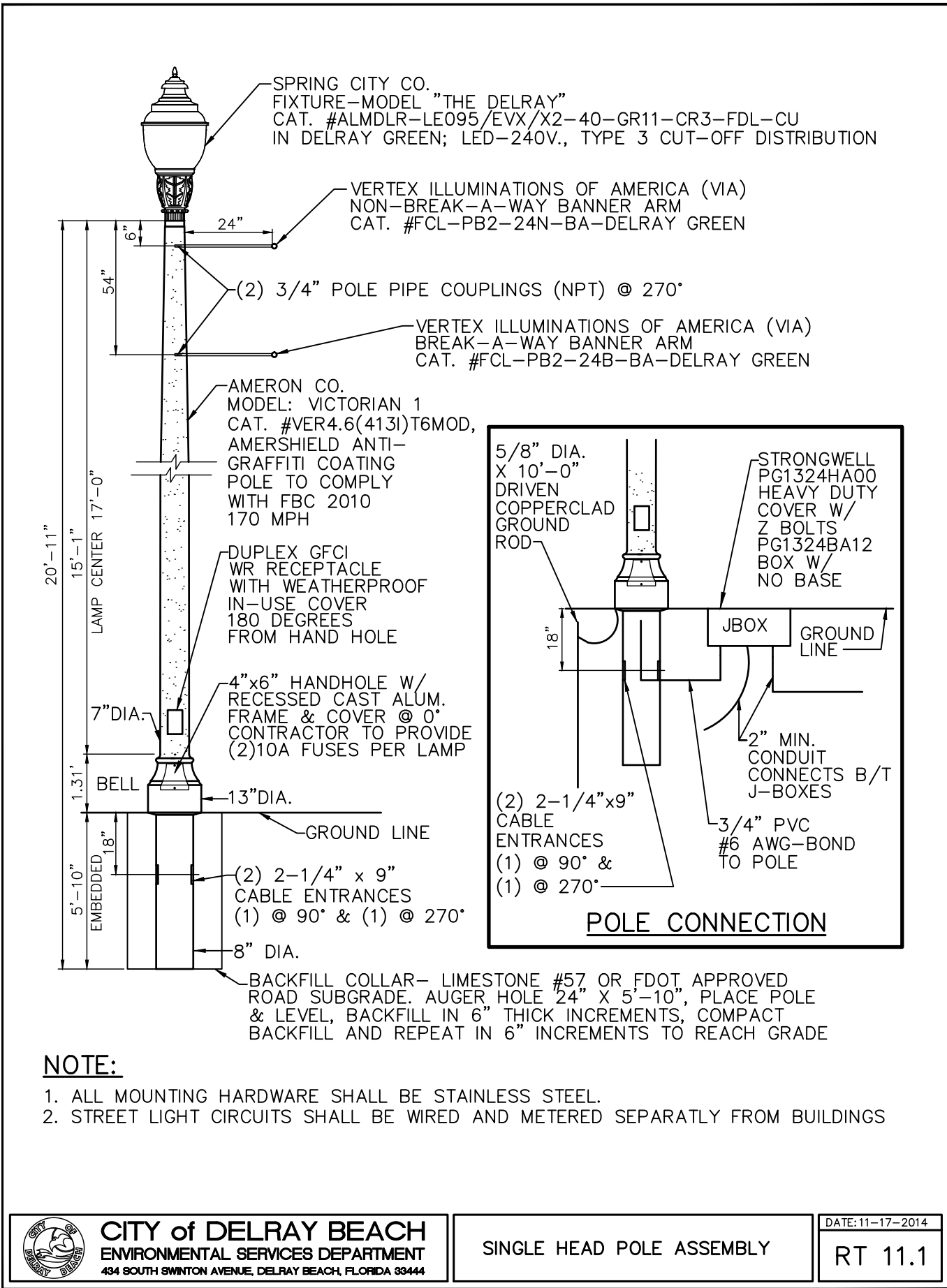
## SITE PHOTOMETRICS

SCALE: 1" = 20'

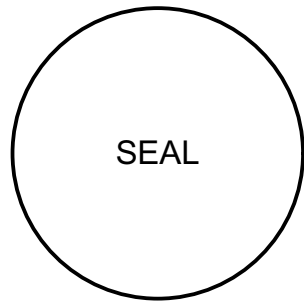
### SITE LIGHTING

Luminaire Schedule					
Symbol	Qty	Label	Arrangement	ULF	Description
+	5	SA	SINGLE	0.900	Xtra Light VNTLED50110045NDIM520xxBZH0H5
+	3	SB	SINGLE	0.900	Xtra Light VNTLED5010723MNDIM520xxBZH0H5
Calculation Summary					
Label	CalcType	Units	Avg	Max	Min
Alley Way	Illuminance	Fc	0.57	0.8	0.3
Parking Lot #1	Illuminance	Fc	3.05	4.9	1.0
Parking Lot #2	Illuminance	Fc	2.37	4.0	1.0
Spill	Illuminance	Fc	0.05	0.3	0.0
STREET	Illuminance/Field survey	Fc	2.46	20.3	0.4

\*FOOT HAS A 1 FC AVERAGE MIN. REQUIREMENTS FOR COLLECTOR STREETS PER 231.2.1 OTHER ROADWAYS.



**STEVE SIEBERT  
ARCHITECTURE**  
466 N. FEDERAL HIGHWAY  
BOYNTON BEACH, FL 33435  
PH. 561.880.7894  
Steve@stevesiebert.com  
www.stevesiebert.com



**DELRAY COMM. MISS. BAPTIST  
CHURCH**  
CLASS V APPLICATION  
SW 5TH AVENUE  
DELRAY BEACH, FLORIDA 33444

THE WRITTEN DIMENSIONS ON THESE DRAWINGS SHALL TAKE PRECEDENCE OVER SCALED DIMENSIONS.  
THE CONTRACTOR SHALL VERIFY AND BE RESPONSIBLE FOR ALL DIMENSIONS AND CONDITIONS ON THE JOB, AND THIS OFFICE MUST BE NOTIFIED OF ANY VARIATION FROM THE DIMENSIONS.  
COPYRIGHT STEVE SIEBERT ARCHITECTURE-UNAUTHORIZED ANY REPRODUCTION OR OTHER USE OF THIS DRAWING IS PROHIBITED.

PROJECT NO: 18-194  
DATE: 05.22.2019  
DRAWN BY: A.M.  
CHECKED BY: S.S.

REVISIONS:  
A 3rd SUBMITTAL (5.18.21)  
B 4th SUBMITTAL (12.13.21)  
C 5th SUBMITTAL (3.20.22)

PHOTOMETRIC PLAN

PH.1



Project Name	Date
Catalog #	Type

# VIENTO SMALL

## AREA & SITE LED LUMINAIRE



**Viento**  
AREA LIGHT

### APPLICATIONS

- Auto Dealership Sales Lots
- Parking Lots
- Educational/Business Campuses
- Parks & Recreation Areas
- Security Areas
- Mall & Retail Spaces
- Pedestrian Walkways

### APPROVALS

- ETL Listed. Complies with UL 1598 and CSA C22.2 No. 250.0-08
- 3G Vibration Rated for Bridge/Overpass Applications per ANSI C136.31-2010, Test Level 2.
- Suitable for wet locations.
- IP 66 Optics and Housing.
- Select models DLC Qualified. For a completed list of DLC Qualified products, please visit: <http://www.xtralight.com/dlc> or [www.designlights.org/qpl](http://www.designlights.org/qpl)

### PRODUCT PERFORMANCE

MODEL	LUMENS	WATTS	EFFICACY
VNT-S 025*	4085	27.3	149.8 LPW
VNT-S 052*	7605	52.7	144.3 LPW
VNT-S 072*	10775	77.4	139.2 LPW
VNT-S 100*	14735	109.1	135.0 LPW

\*Type V Optics 5000K. For more photometric information see page 3.

### FEATURES

- Outstanding photometric performance results in sites with excellent uniformity, optimal pole spacing and lower power density.
- Optics are completely sealed against moisture and environmental contaminants (IP66).
- Low profile architectural design offers a contemporary appearance with excellent light output and is night sky friendly.
- Field serviceable luminaire utilizing Lumileds LED technology.
- Controls ready luminaire for independent operation or remote management.
- Operating temperature: -40°C to +50°C (-40°F to +122°F)

### CONSTRUCTION

- Housing: One-piece die-cast aluminum has integral heat sink fins to optimize thermal management through conductive and convective cooling.
- The LED driver is mounted in direct contact with the casting to promote low operating temperature and long life.
- Housing and door are protected with a thermoset TGIC-polyester powder coat finish using a tightly controlled multi-stage process to a uniform 3 mil thickness (min). This finish provides superior protection from corrosion and maximum environmental durability.
- Powder coat finish in bronze, white or custom colors (consult factory).

### MOUNTING

- Integral arm with key hole slot facilitates quick and easy installation.
- Nut plate eliminates loose hardware in the pole and reduces installation labor.

### OPTICS

- Precision molded optics for superior uniformity, minimal light trespass and maximum pole spacing.
- Optical grade polymer is UV stabilized and impact resistant.
- IP66 rated LED light engines prevent dust and moisture from degrading performance.
- Distributions: Type II, Type III, Type IV and Type V. Types II, III, and IV available rotated right or left 90°, factory installed.
- Best in class Osram LEDs with 3000K, 4000K and 5000K CCT (min 70 CRI).
- Zero uplight (U0) is night sky friendly, reduces wasted light.
- Lumen Maintenance: >100,000hrs L70 @ 25°C.

### ELECTRICAL

- Voltage: 120-277V 50/60Hz driver (standard); 347-480V 50/60Hz driver (optional).
- Class 2 electronic drivers are designed to have a power factor >90%, THD <20%, and an expected life of 100,000 hours with <1% failure rate.
- Surge Protection: 20kA standard.
- NEMA twist-lock receptacle available as an option. NOTE: Photocontrol or shorting cap required for operation (not included).
- Dimming: 0-10v dimmable driver standard.
- Passive Infrared (PIR) Photo/Motion Sensor option available.

### WARRANTY

- 10 year limited warranty.



# VIENTO SMALL

## AREA & SITE LED LUMINAIRE

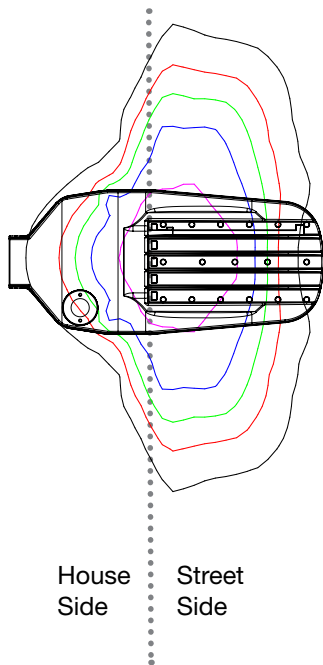
ORDER LOGIC SAMPLE CATALOG NUMBER: VNT-LED-S-01-100-3M-N-DIM-4-20-X-X-BZ-HO

VNT LED		S	O1					DIM						HO	
<div>Size &amp; Model Combinations:</div> <div>VNT-LED-S-01-025</div> <div>VNT-LED-S-01-052</div> <div>VNT-LED-S-01-072</div> <div>VNT-LED-S-01-100</div>		MODULES	O1	OPTICS		DRIVER		SURGE		MOUNT		HIGH OUTPUT			
				2M	Type II Medium	DIM	Dimmable Multi-Volt	20	20kV/20kA (Std)	X	None (Std)	HO			
				2S	Type II Short		120-277V			A	Angle Mount				
				3M	Type III Medium	HVD	Dimmable 347-480V								
				4S	Type IV Short										
				5M	Type V Square Medium										
SIZE		MODEL		ORIENTATION		CCT		CONTROLS		COLOR		OPTIONS			
S Small		025		N Normal (Forward)		3 3000K		X None (STD)		BZ Bronze		HS <sup>1</sup> House Side Shield			
		052		R <sup>1</sup> Right		4 4000K		3 <sup>2</sup> Twist-Lock Receptacle, 3-pin		WH White					
		072		L <sup>1</sup> Left		5 5000K		5 <sup>2</sup> Twist-Lock Receptacle, 5-pin		Custom Colors Are Available (Consult Factory)					
		100						7 <sup>2</sup> Twist-Lock Receptacle, 7-pin							
								B FSP-211L3@20"MH/40"DIA							
								D FSP-211L7@40"MH/100"DIA							

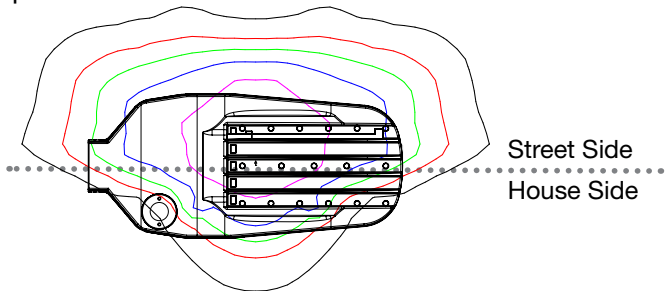
1. Not available with 5M Optics.  
2. Photocontrol not included.

### Rotated Asymmetric Optics (Type II, Type III & Type IV)

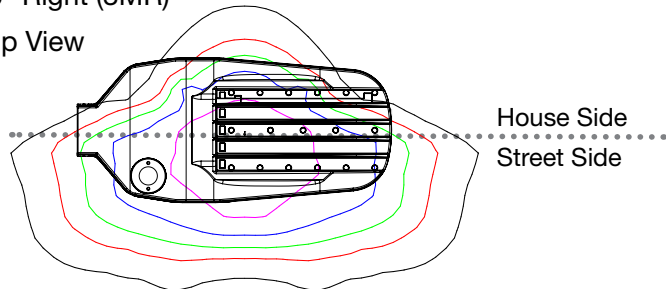
Normal (3MN)  
Top View



90° Left (3ML)  
Top View



90° Right (3MR)  
Top View



(For more information about the House Side Shield Optics Accessory see page 6.)



# VIENTO SMALL

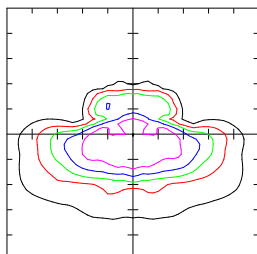
## AREA & SITE LED LUMINAIRE

### IES DISTRIBUTION TYPES

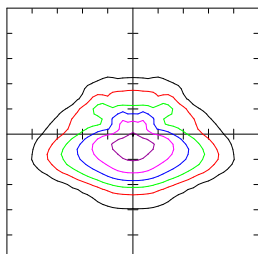
#### ISO Lines

Distance in Units of Mounting Height Values Based on 25 Foot Mounting Height.

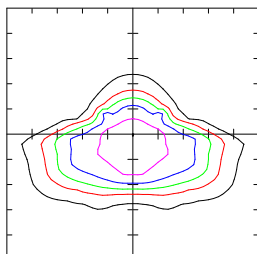
**Type II  
Medium**



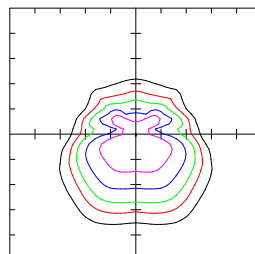
**Type II  
Short**



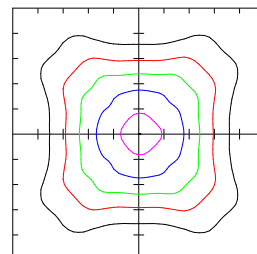
**Type III  
Medium**



**Type IV  
Short**



**Type V  
Square Medium**



### PHOTOMETRIC DATA

**Type II Medium**

Model	CCT	Lumens	System Watts	Lm/W
025	5000K	3817	27.3	140.0
052	5000K	7106	52.7	134.8
072	5000K	10068	77.4	130.1
100	5000K	13768	108.2	127.2

**Type II Short**

Model	CCT	Lumens	System Watts	Lm/W
025	5000K	3837	27.3	140.7
052	5000K	7143	52.7	135.5
072	5000K	10120	77.4	130.7
100	5000K	13839	108.2	127.9

**Type III Medium**

Model	CCT	Lumens	System Watts	Lm/W
025	5000K	3809	27.3	139.7
052	5000K	7091	52.7	134.6
072	5000K	10047	77.4	129.8
100	5000K	13739	108.2	127.0

**Type IV Short**

Model	CCT	Lumens	System Watts	Lm/W
025	5000K	3845	27.3	141.0
052	5000K	7158	52.7	135.8
072	5000K	10142	77.4	131.0
100	5000K	13869	109.2	127.1

**Type V Medium**

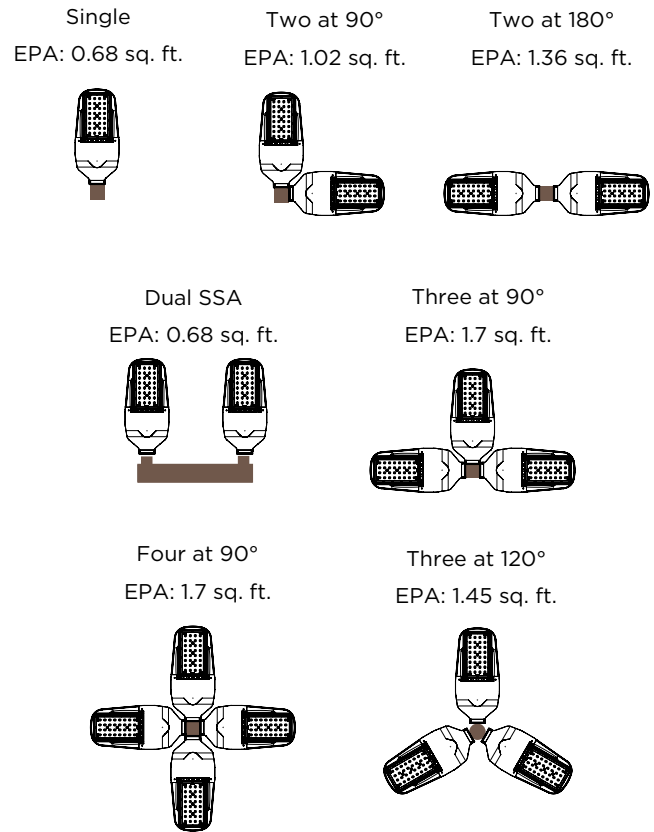
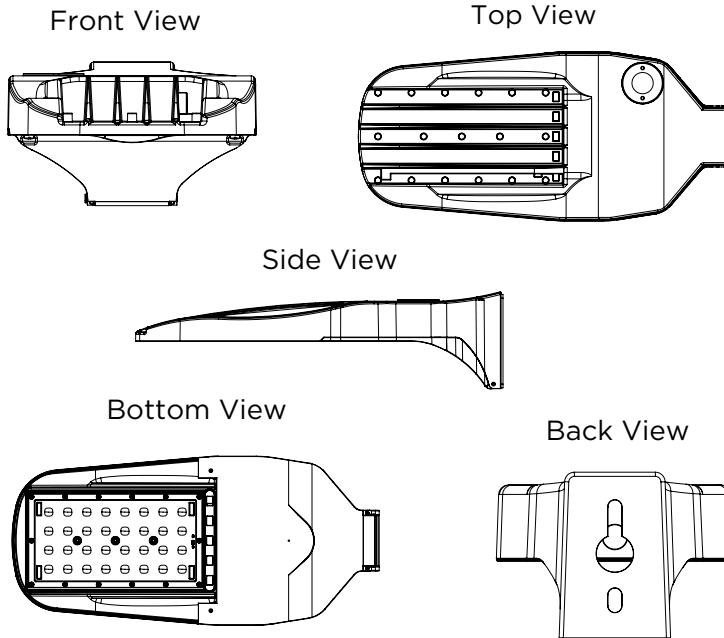
Model	CCT	Lumens	System Watts	Lm/W
025	5000K	4281	27.8	154.0
052	5000K	7894	53.7	147.0
072	5000K	10775	77.4	139.2
100	5000K	14735	109.1	135.0

# VIENTO SMALL

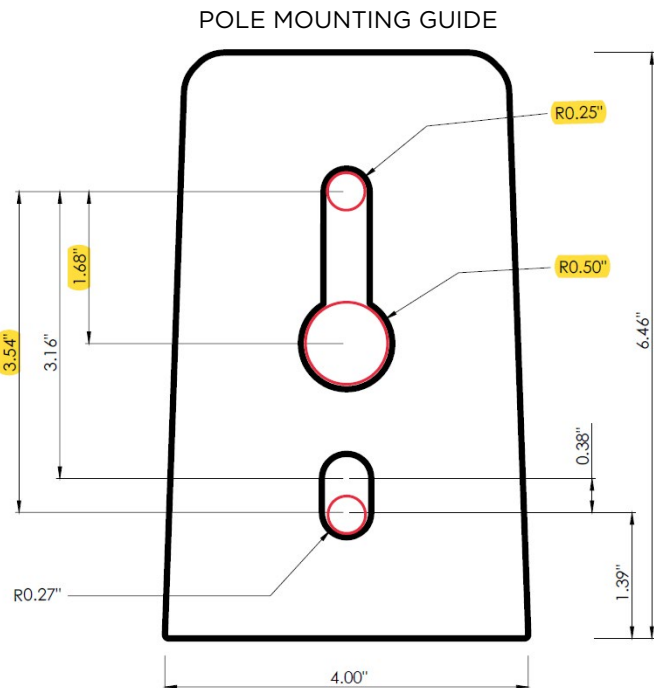
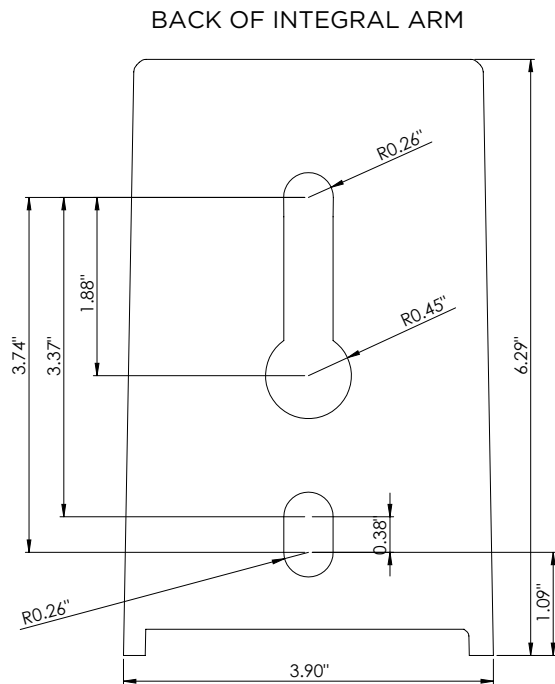
## AREA & SITE LED LUMINAIRE

### DIMENSIONAL DATA

- WEIGHT: 10.93 LBS
- 24.09" L X 11.07" W X 6.4" H



### MOUNTING DETAIL



#### 4" Pole Mounting Machine Pattern Details (Red Circles)

- Top 0.50" DIA hole to be no less than 2" from the top of the pole.
- 2x 0.50" DIA holes @ 3.50" apart (bolt holes), centered on pole face.
- 1x 1.00" DIA holes @ 1.68" below the top hole (wireway), centered on pole face.

# VIENTO SMALL

## AREA & SITE LED LUMINAIRE

### LIGHTING CONTROLS



## LINE VOLTAGE HIGH/LOW/OFF PIR FIXTURE INTEGRATED OUT-DOOR PHOTO/MOTION SENSOR

| FSP-211

Fully adjustable high and low dimmed light levels; optional dusk to dawn control

Designed for LED fixtures; rated for extreme temperatures and up to 200,000 on/off cycles

Hold off setpoint with automatic calibration option for convenience and added energy savings



Adjustable via handheld wireless configuration tool

IP66 rated with choice of lenses for wet and outdoor locations, and mounting heights from 8' to 40'

Adjustable time delay and cut off delay



### Description

The FSP-211 mounts in an outdoor lighting fixture and provides multi-level control based on motion and/or daylight contribution. It controls 0-10 VDC LED drivers or dimming ballasts, as well as non-dimming ballasts and, with an FSP-Lx Lens, is rated for wet and cold locations. All control parameters are adjustable via a wireless configuration tool capable of storing and transmitting sensor profiles.

### Operation

Typically, the sensor ramps lighting On to the selected High mode level when motion is detected and the ambient light level is below the hold off setpoint. After the sensor stops detecting movement and the time delay elapses, lights fade to the Low mode level. If there is no motion during the subsequent cut off time delay, the lights will turn Off. For dusk to dawn control, the integral photocell can switch the lights On and Off based on the ambient light level so that lighting remains on overnight even without motion detection.

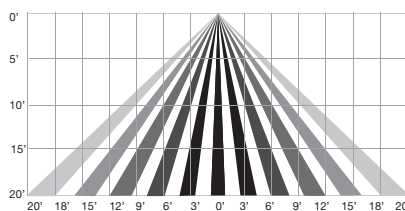
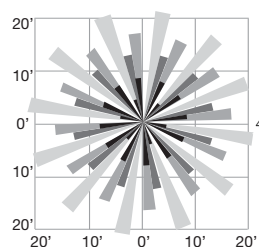
### Wireless Handheld Configuration Tool

Initial setup and subsequent sensor adjustments are made using a handheld configuration tool (FSIR-100). This tool enables adjustment of parameters including high and low modes, sensitivity, time delay, cut off and more. The FSIR-100 is also used to initiate automatic calibration of the FSP-211 ambient light level setpoint. The setpoint is used to hold the controlled lighting off or at low level when there is sufficient daylight. The wireless tool stores up to six sensor parameter profiles to speed configuration of multiple sensors.

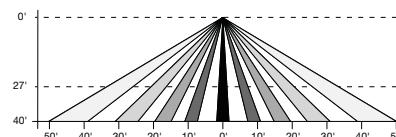
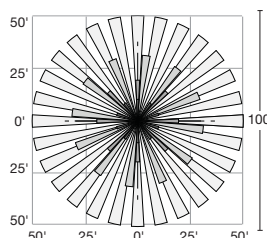
### Applications

The slim, low-profile FSP-211 is designed for installation inside the bottom of a light fixture body. When fully assembled and installed in an IP66-rated fixture, the sensor and FSP-Lx lenses are IP66 outdoor rated. The sensor is ideal for areas such as parking facilities, gas stations, pedestrian pathways and warehouses. A choice of four lenses ensures complete coverage for mounting heights up to 40'.

**OPTION B FSP-211L3**  
20' Mounting Height  
40' Diameter



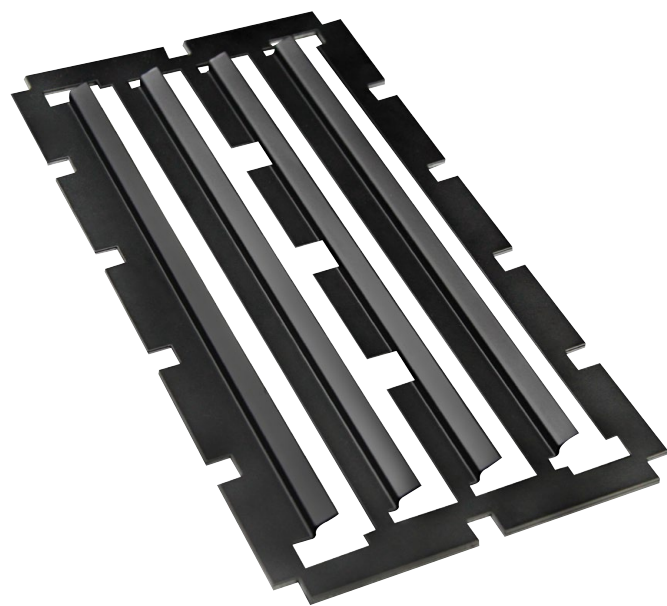
**OPTION D FSP-211L7**  
40' Mounting Height  
100' Diameter



# VIENTO SMALL

## AREA & SITE LED LUMINAIRE

HOUSE SIDE SHIELD OPTICS ACCESSORY



Medium Viento Shown With House Side Shield

FEATURES

- Significantly reduces backlight to minimize light trespass.
- Available for Type II Medium (2M), Type II Short (2S), Type III Medium (3M) and Type IV Short (4S) optics, both NORMAL and rotated LEFT/RIGHT.
- Factory installed as an option when ordered with the luminaire.
- Field installable (tool-free) when ordered as a separate accessory.

CONSTRUCTION

- Low-profile, precision fabricated CNC design.
- Flat black TGIC-polyester powder coat finish using tightly controlled multi-stage process to a uniform 3 mil thickness (min).
- This finish provides superior protection from corrosion and maximum environmental durability.

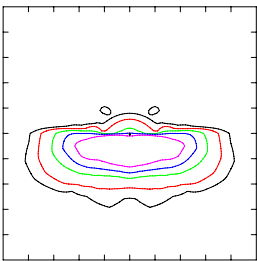
DIMENSIONS

- 11.38" L x 6.13" W x 0.4" H
- Weight: 0.45 lbs

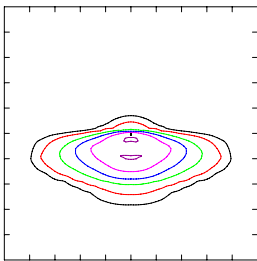
IES DISTRIBUTION TYPES

ISO Lines     Distance in Units of Mounting Height Values  
Based on 25 Foot Mounting Height

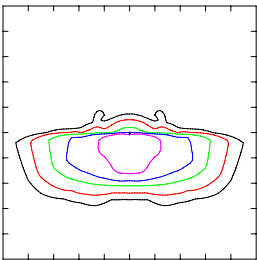
Type II Medium + HSS



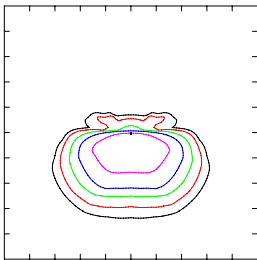
Type II Short + HSS



Type III Medium + HSS



Type IV Short + HSS



ORDER LOGIC

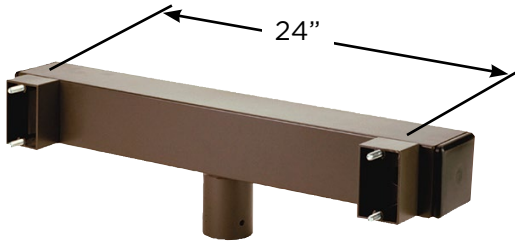
VNT	-	HSS	-		-	
		ACCESSORY		OPTICS		SIZE
		HSS House Side Shield		N Normal		SM Small
				LR Rotated Optics		MED Medium
						LRG Large

# VIENTO SMALL

## AREA & SITE LED LUMINAIRE

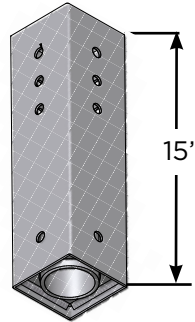
### MOUNTING ACCESSORIES

Standard in Bronze and White (custom colors available, consult factory).



Shoulder-to-Shoulder Adaptor  
**SSA**

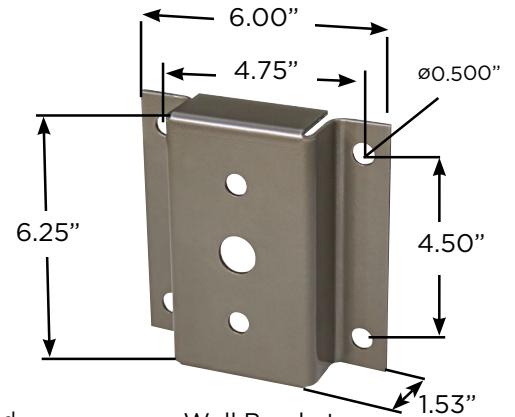
EPA: 0.90 sq. ft. - 27 lbs



Tenon Mount Adaptor - Square or Round  
**TMAS 4"/5"/6" SQ**  
**TMAR 4"/5" DIA\***

EPA: 0.4 sq. ft. 10 - 16 lbs

\*Requires Round Pole Adaptor **VNT-RPA**



Wall Bracket  
**VNT-WB**



Tenon Wall Bracket  
Horizontal Mount  
**MS1676**

8" Square Plate - 2 3/8" OD



Round Pole Adaptor  
**VNT-RPA**

3" to 5" Diameter  
EPA: 0.03 sq. ft. - 0.75 lbs.

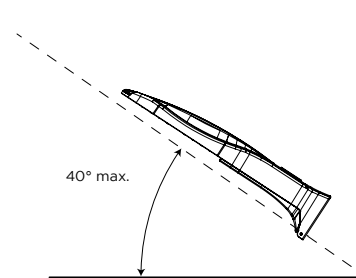
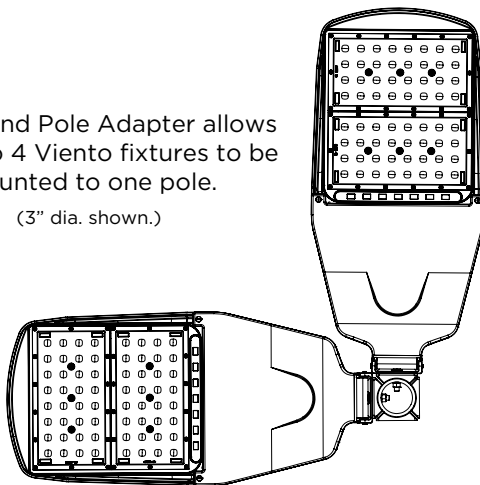


Adjustable Slip Fitter  
**VNT-ASF**

(180° - 10° increments)  
EPA: 0.127 sq. ft. - 6.0 lbs

The Round Pole Adapter allows for up to 4 Viento fixtures to be mounted to one pole.

(3" dia. shown.)



#### NOTES:

1. Viento with ASF accessory needs to be ordered with "A" mounting code (see Ordering Guide for details)
2. Note: No more than 40° up angle.