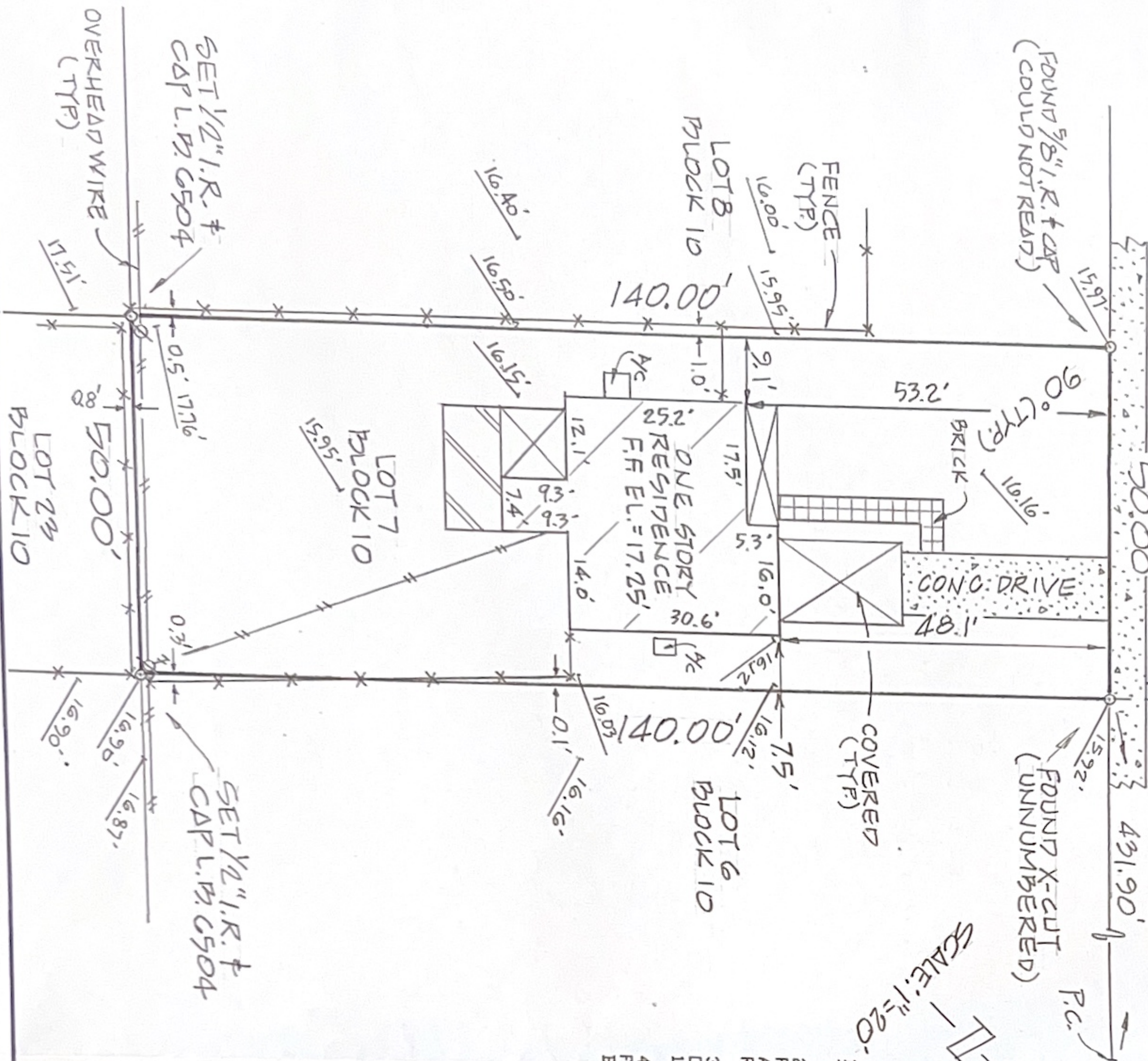


240 N. DIXIE BOULEVARD

LOT 7, BLOCK 10

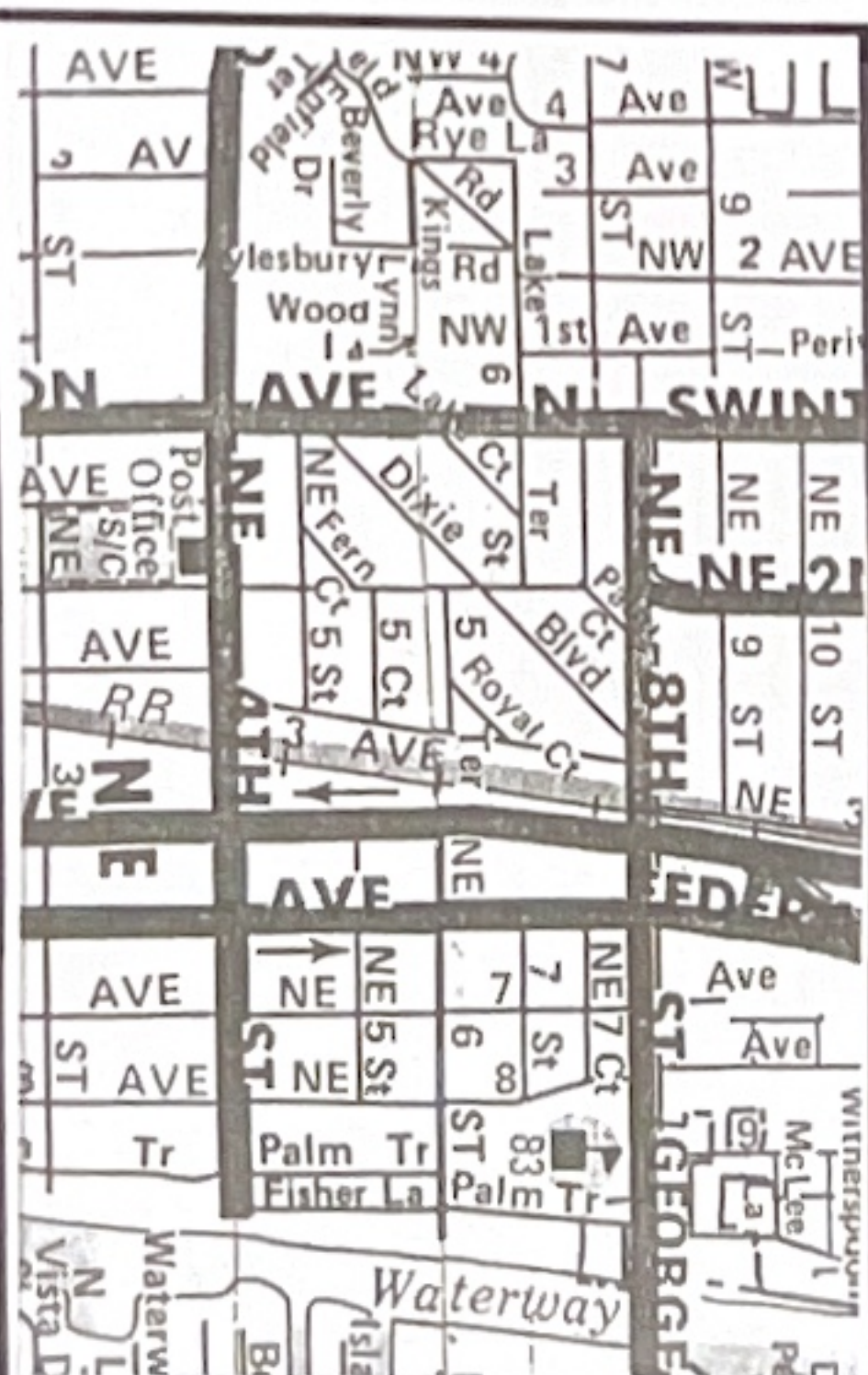
DEL-IDA PARK

According to the plat recorded in Plat Book 9, Page 52, recorded in the public records of Palm Beach County, Florida; said land situate, lying, and being in Palm Beach County, Florida.



NOTES:

- 1) BEARINGS SHOWN HEREON ARE RELATIVE TO PLAT AND ARE ASSUMED.
- 2) NO ABSTRACT OR TITLE SEARCH WAS PERFORMED TO DISCOVER THE EXISTENCE OF ANY EASEMENTS OR RESTRICTIONS OF RECORD.
- 3) ELEVATIONS SHOWN HEREON ARE BASED ON NORTH AMERICA VERTICAL DATUM OF 1988 UNLESS OTHERWISE NOTED.
- 4) NO BELOW GROUND IMPROVEMENTS, FOOTERS, FOUNDATIONS OR UTILITIES HAVE BEEN LOCATED OR SHOWN ON THIS SURVEY.



DRB = official record book
C.B.S. = concrete block structure
P.C.P. = point of compound curve
P.C.P. = permanent control point
P.I. = point of intersection
P.T. = point of tangency
D/E = drainage easement
C.M.P. = corrugated metal pipe
R.L.S. = registered land surveyor
L.B. = licensed business

TRAN = transformer pad
F.P.A.L. = Florida power and light
CH = concrete monument
P.I. = point of intersection
P.T. = point of tangency
D/E = drainage easement
C.M.P. = corrugated metal pipe
R.L.S. = registered land surveyor
L.B. = licensed business

P.B. = plat book
TYP. = typical
R.V. = right-of-way
C.A. = central angle
B.B. = bearing basis line
ASPH = asphalt
MH = manhole
U/E = utility easement
CLF = chain link fence
P.R.M. = permanent reference monument

P.G. = page
I.R. = iron rod
R = radius
D = deed
D/S = offset
C.D.N.C. = concrete
E.S.H.T. = easement
C.A.L.C. = calculated

CERTIFIED TO:

TIM MCKINNEY SR.



801 S.E. 6th Ave., Suite 203
Delray Beach, FL 33483

Phone 561-243-4624
Fax 243-4869

AUTHORIZATION NUMBER LB6504

I HEREBY CERTIFY THAT THE SKETCH OF BOUNDARY SURVEY SHOWN HEREON MEETS THE STANDARDS OF PRACTICE SET FORTH IN CHAPTER 34-17-050-052, FLORIDA ADMINISTRATIVE CODE PURSUANT TO SECTION 472.027, FLORIDA STATUTES.

HARRY A. BURGESS PLS 5089

FLOOD ZONE:

"X"

MAP NO: 12099C 0977F

MAP DATE: 10-5-17

DATE: 3-28-22

JOB NO: 03-22-059

REVISED:

NOT VALID
UNLESS SEALED
WITH EMBOSSED
SURVEYOR'S SEAL