

# The Railroad Track Trespass Prevention Strategy (TPS)



# Background

A photograph showing a person walking across railroad tracks in a residential area. The tracks run diagonally from the bottom left towards the center. A person in dark clothing is walking across the tracks. To the left, there are trees and a house. To the right, there are parked cars and a road. A white car is visible in the distance on the road. The sky is overcast.

Trespassing on a railroad's property is a leading cause of rail-related fatalities.





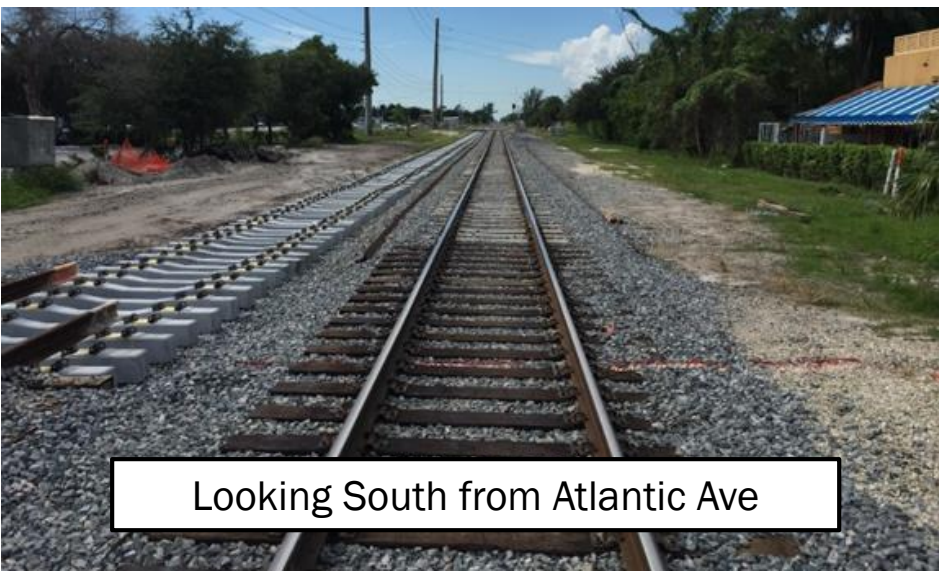
# Project Location

- Corridor between Linton and George Bush Blvd.
- Critical segment: NE 2<sup>nd</sup> St. to SE 2<sup>nd</sup> St.

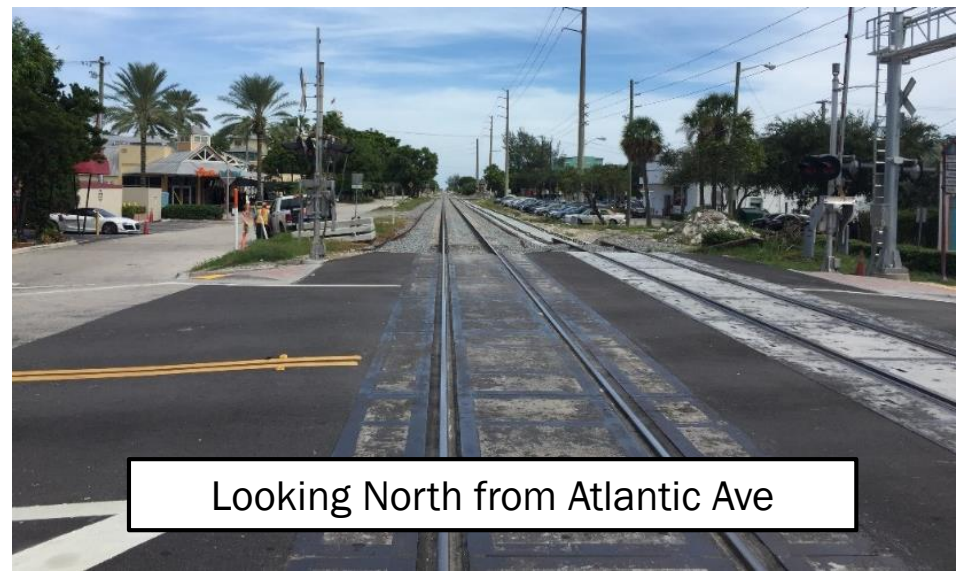


# Issues

- By mid-2017 32 more daily Brightline trains
- City currently leases FEC R-O-W for roads & parking
- Second track will cause loss of 23 parking spaces



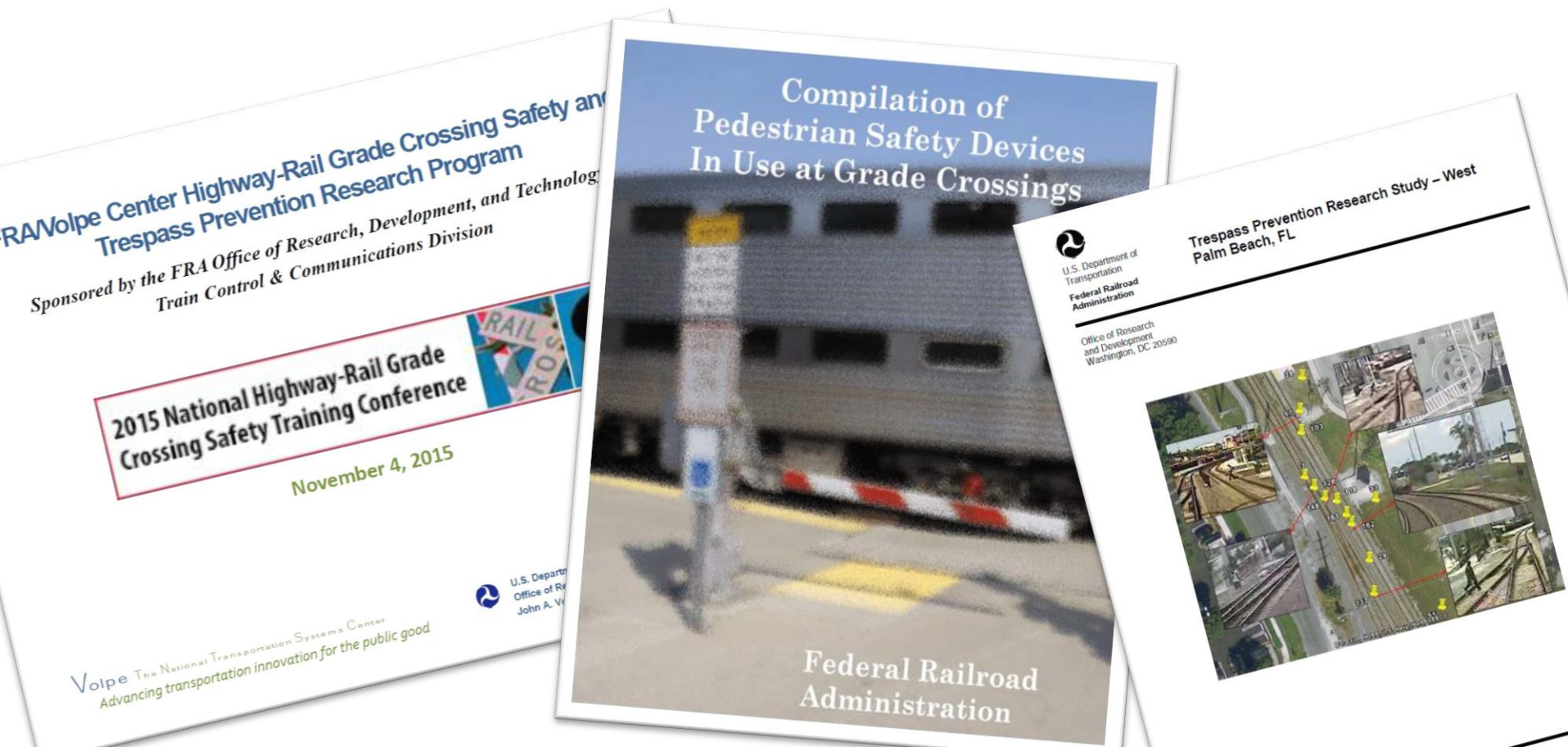
Looking South from Atlantic Ave



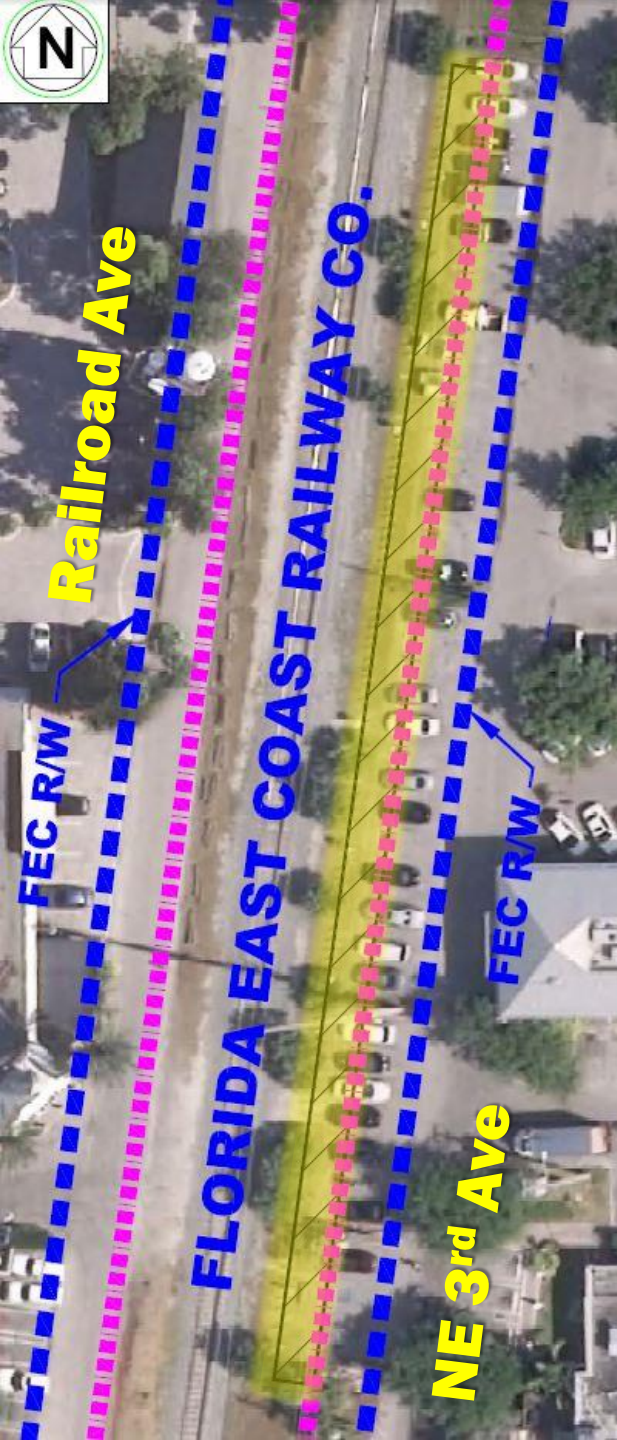
Looking North from Atlantic Ave

# Trespass Prevention Evaluation

- Met with FEC, MPO, DDA, AAF, FDOT
- Studied various nationwide reports







# Recommendations

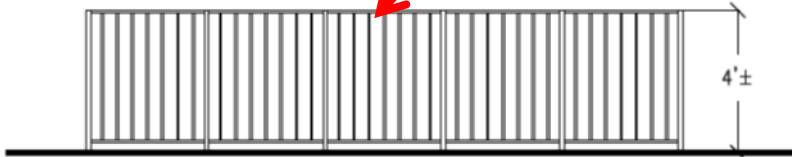
- Install easy-to-maintain barriers
- Reconfigure parking and traffic pattern within leased FEC R-O-W



# Barrier Alternatives

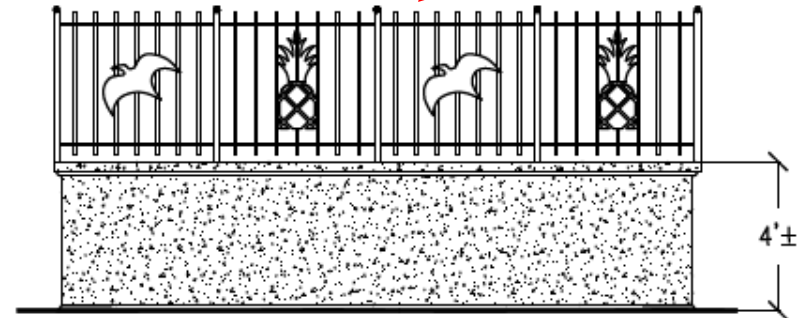
**OPTION 1**

Aluminum  
Handrail Fence



**OPTION 2**

Metal Fence &  
Concrete Wall



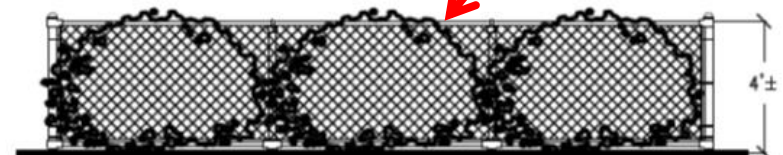
**OPTION 3**

Landscape



**OPTION 4**

Chain-link  
Fence



# Parking and Traffic

- NE 3<sup>rd</sup> Ave.
  - 38 head-on parking spaces reduced to 15 parallel parking spaces
  - Evaluation and optimization of Railroad Lot
  - Traffic calming
  - Bicycle parking



# Parking and Traffic

- Railroad Ave.
  - Traffic pattern one-way southbound
  - Evaluate options for angled parking, taxi stand, Uber/Lyft drop-off, golf cart parking
  - Traffic calming

# Potential Amenities



“Promenade”



# Living Streets



WOONERF



LIVING STREET

# Trespass Prevention Evaluation

Anti-trespass guards, as shown, aren't feasible for Delray Beach





Option 4, four-foot high chain link fence with black or green vinyl coating and hedged screening by hedging: □ Chain link fence unit cost \$29 per linear feet for a total cost of \$36,830 □ Six inches reclaimed water main for irrigation unit cost \$156, for a total cost of \$187,200 Cost estimate Option 4: \$224,100 +/- 3.

Option 2, decorative metal three-foot high fence on top of a four-foot high concrete wall: □ Unit cost \$38 per linear feet, for a total cost of \$48,260 Cost estimate Option 2: \$49,000 +/-

Option 1, aluminum mechanical fence (handrail-type decorative fencing system): □ Unit cost \$22 per linear feet for a total cost of \$ 27,940 Cost estimate Option 1: \$28,000 +/-

Option 3, A landscape-only barrier to be maintained at a three-foot height. □ Unit cost \$15 per linear feet for a total cost of \$ 19,050 □ Six inches reclaimed water main for irrigation unit cost \$156, for a total cost of \$187,200 Cost estimate Option 3: \$206,300 +/-