

S-2  
"C"  
19.34 19.45  
15.15  
S. 15.16  
W. 15.15

S-3  
"C"  
19.00 19.69  
15.15  
E. 15.18  
W. 15.17

S-4  
"A"  
13.11 19.29  
15.15 E  
15.90 S  
E. 15.16  
S. 15.92

S-14  
"A"  
19.12 19.77  
15.15  
S. 15.17  
W. 15.23  
N. 15.12

S-15  
"C"  
19.23 19.45  
15.15  
W. 15.23  
N. 15.12

S-16  
"A"  
19.54 19.62  
15.15  
W. 15.23  
E. 15.13

S-5  
"C"  
15.30 18.58  
15.15 E  
15.90 S  
E. 15.16  
S. 15.92

S-6  
"A"  
15.12 18.10  
15.15  
N. 15.10  
NE 15.12  
S. 15.10

S-7  
"A"  
18.21 18.21  
15.15  
S. 15.14

S-8  
"A"  
15.12 18.10  
15.15  
N. 15.10  
NE 15.12  
S. 15.10

S-9  
"A"  
18.27 18.30  
15.15  
N. 15.25  
S. 15.20

S-10  
"A"  
18.27 18.30  
15.15  
N. 15.25  
S. 15.20

S-11  
"A"  
18.27 18.30  
15.15  
N. 15.25  
S. 15.20

S-12  
"A"  
18.27 18.30  
15.15  
N. 15.25  
S. 15.20

S-13  
"A"  
18.27 18.30  
15.15  
N. 15.25  
S. 15.20

S-14  
"A"  
18.27 18.30  
15.15  
N. 15.25  
S. 15.20

S-15  
"A"  
18.27 18.30  
15.15  
N. 15.25  
S. 15.20

S-16  
"A"  
18.27 18.30  
15.15  
N. 15.25  
S. 15.20

- NOTE** 1. ALL C.M.P. TO BE 15"
3. NORTH & EAST PROPERTY LINES SHALL HAVE A PERIMETER RETAINING WALL OR APPROVED EQUAL (MIN. TOP ELEV. 20.40)

The visible portions of the underground utility systems have been updated according to the date of the last field survey. No inspections or verifications have been made as to the locations of the underground utilities other than that shown hereon as record data dated 1985.

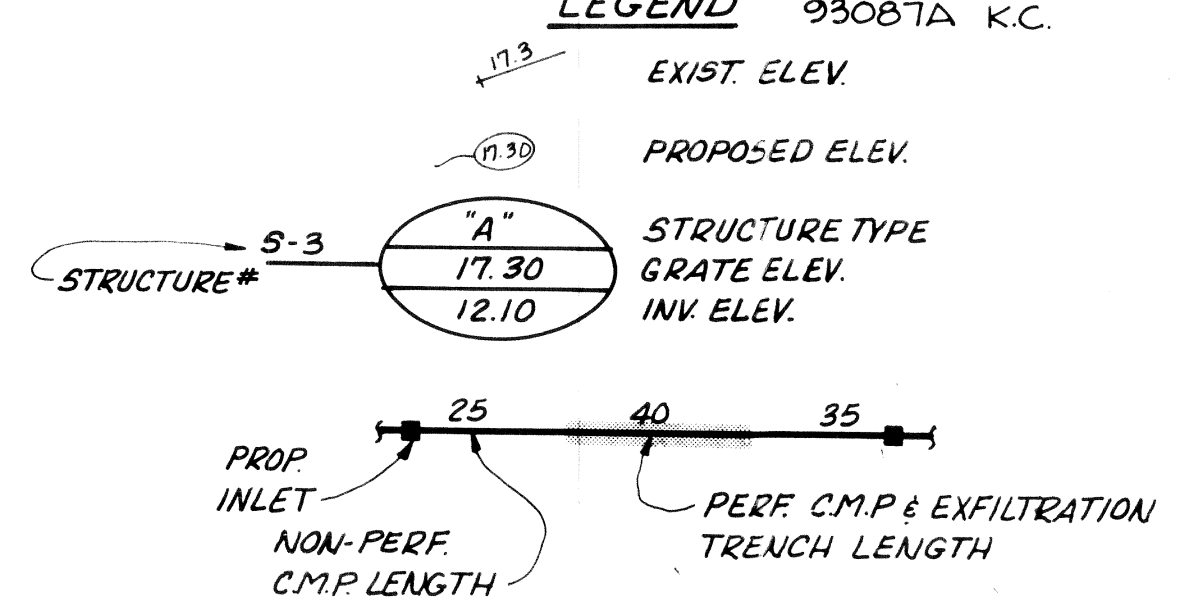
ELEVATIONS NOT UPDATED OR VERIFIED AT THE TIME OF THE UPDATE SURVEY

**RECORD DRAWING**  
INFORMATION BY A & B FIELD CREW 6-20-85  
POSTED A & B 10-3-85 BY F.E.H.

RECORD DATA  
PER W JACKSON, CONTRACTOR  
DC/KT-5/11/85

REFER TO SHEET 1 FOR UPDATED INFORMATION ON BOUNDARY, EASEMENTS, AND VISIBLE IMPROVEMENTS. SEE SHEET 3 FOR WATER AND SEWER PLAN

UP DATED 6-23-86 E.H.  
UP DATED - 23 APRIL, 1986 M.E.  
UPDATE SURVEY 10-22-93 K.C.  
UPDATE SURVEY 4/23/97 93087A K.C.



**ADAIR & BRADY, INC.**  
 CONSULTING ENGINEERS • LAND SURVEYORS • LAND PLANNERS  
 1958 South Congress Avenue  
 West Palm Beach, Florida 33406  
 305 / 287 - 1560 & 746 - 2874

**LINTON SQUARE**  
 PAVING & DRAINAGE PLAN  
 PALM BEACH COUNTY, FLORIDA

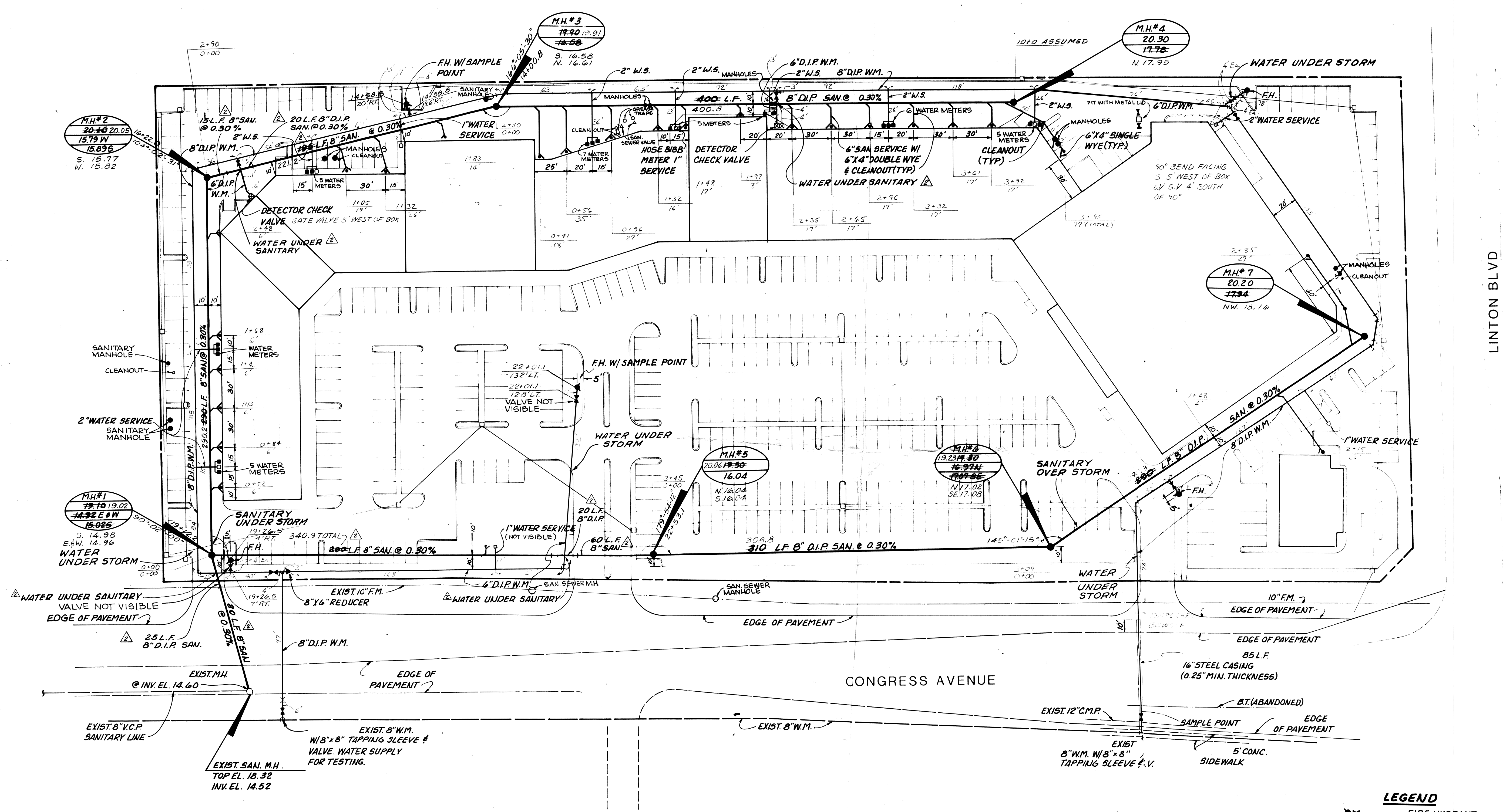
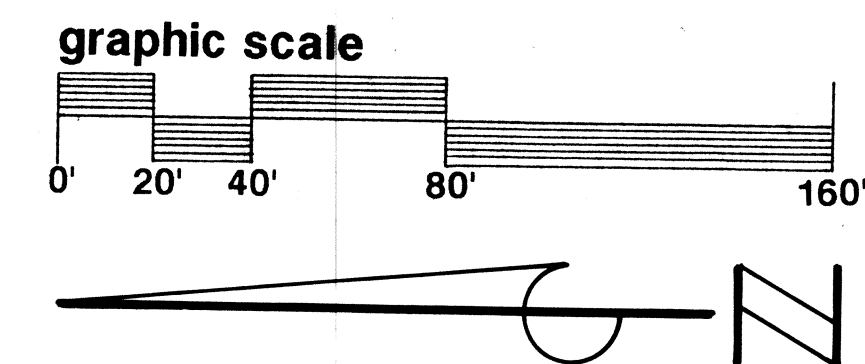
6-8-85	AN	KJ
REVISED OUTREACH LAYOUT & GRADES PER HW		
2-85	AN	KJ
MOVED INLETS FOR POLES & PERIMETER GRADES		
2-85	AN	KJ
REVISED GRADES DUE TO CONGRESS AVE REVISIONS		
12-88	AN	KJ
REVISED GRADES, INLETS		
Rev	Date	Dr

Date 10/84 Scale 1"=40'
Dr: ML CKJ Appr: KJ

B P WO 4038H
FP 1421

2 of 3





- LEGEND**
- FIRE HYDRANT
  - SINGLE WATER METER
  - DOUBLE WATER
  - X— GATE VALVE
  - SINGLE SAN. SERVICE W/ CLEANOUT
  - X— DOUBLE SAN. SERVICE W/ CLEANOUT
  - SANITARY MANHOLE

REFER TO SHEET 1 FOR UPDATED INFORMATION ON BOUNDARY, EASEMENTS, AND VISIBLE IMPROVEMENTS

The visible portions of the underground utility systems have been updated according to the date of the last field survey. No inspections or verifications have been made as to the locations of the underground utilities other than that shown hereon as record data dated 1985.

ELEVATIONS NOT UPDATED OR VERIFIED AT THE TIME OF THE UPDATE SURVEY

RECORD DATA  
PE W JACKSON, CONTRACTOR  
DCKJ-5/1/85

**RECORD SURVEY**  
APRIL 1986  
4-23-97 93087A  
UPDATE SURVEY KC  
UPDATE SURVEY 10-22-93  
UP DATED 6-23-86 E.H.

**ADAIR & BRADY, INC.**  
 CONSULTING ENGINEERS • LAND SURVEYORS • LAND PLANNERS  
 1958 South Congress Avenue  
 West Palm Beach, Florida 33406  
 305 384-1221

**LINTON SQUARE**  
**WATER AND SEWER PLAN**  
 PALM BEACH COUNTY, FLORIDA

12-80	F.H.	KJ
WATER CONFLICTS		
11-80	AN	KJ
RELOCATE K.M.S. PER DELRAY UTILITY		
Rev	Date	Dr

Cal	Ck	Ck	Appr
-----	----	----	------

Date 10/84	Scale 1"=40'
Dr. M.L. C.K.J.	Appr. K.J.
B. P.	NO 4038H

**FP 1421**  
 Sheet 3 of 3