



Planning, Zoning and Building Department

BOARD ACTION REPORT – APPEALABLE ITEM

Project Name: Delray Verana
Project Location: 1495 Spring harbor Dr.
Request: Approval of a Color Change
Board: Site Plan Review and Appearance Board
Meeting Date: January 10, 2018

Board Action:

Approved (5-0, Fred Kaub absent) to change from earth tones consisting of white, cream, tans, light browns, medium browns, and taupe to natural earth tones of white, light green, tans, and taupe and seaside tones of white, light green, blues and grays.

Project Description:

The subject property is located on south side of Linton Blvd just west of Congress Avenue and is located in the Multiple Family Residential zoning district. The subject property is approximately 22 acres of multifamily housing.

Staff Recommendation:

N/A

Board Comments:

none

Public Comments:

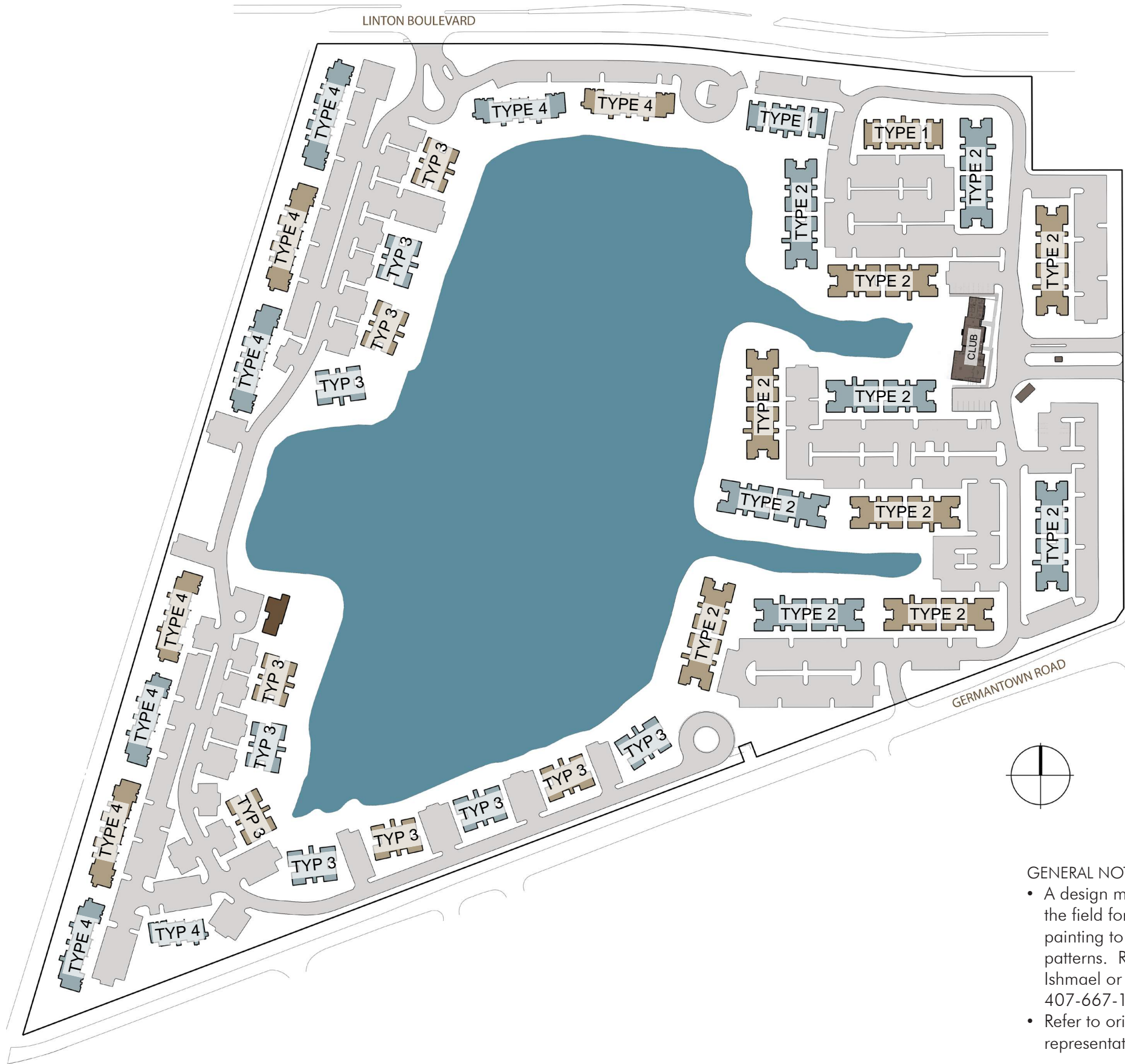
none

Associated Actions:

N/A

Next Action:

The SPRAB action is final unless appealed by the City Commission.



Roof Tile Color



Barcelona 900 -
Chestnut Burnt
www.boralamerica.com

Scheme 1



Body Color A:
SW 7014 Eider White
(Main stucco body color)



Body Color B:
SW 7016 Mindful Gray



Accent Body Color:
SW 6227 Meditative
(To include: balcony and porch
ceilings, all signage)

Scheme 2



Body Color A:
SW 7014 Eider White
(Main stucco body color)



Body Color B:
SW 6156 Ramie



Accent Body Color :
SW 7544 Fenland

Trim and Accent Colors (All Schemes)



SW 7015 Repose Gray
(To include: All window trim and
horizontal banding)



SW 7034 Status Bronze
(To include: fascia, soffits, window
mullions, all previously painted
metal, unit doors when noted)



SW 6230 Rainstorm
(To include: All unit entry doors)



SW 6227 Meditative
(To include: balcony porch ceilings
and building signage)

GENERAL NOTES:

- A design mockup is to be provided of all colors in the field for review/approval by LA/Owner prior to painting to ensure color accuracy and color break patterns. Related questions may be directed to Paige Ishmael or Byron Hubbard, Dix.Hite + Partners, Inc., 407-667-1777 ext. 221/126.
- Refer to original color swatches for accurate color representation.

IMPLEMENTATION NOTES:

- Body color to break at inside corners only
- Downspouts to be painted body color
- Utility doors to be painted adjacent body color
- See page 16 for signage recommendations



Body color to break at inside corner, TYP.

Scheme 1

1 Body Color A:
SW 7014 Eider White
(Main stucco body color)

2 Body Color B:
SW 7016 Mindful Gray

3 Accent Body Color:
SW 6227 Meditative
(To include: balcony and porch ceilings, all signage)

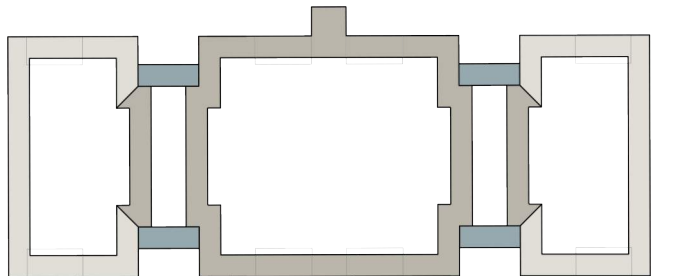
Trim and Accent Colors (All Schemes)

7 SW 7015 Repose Gray
(To include: All window trim and horizontal banding)

8 SW 7034 Status Bronze
(To include: fascia, soffits, window mullions, all previously painted metal, unit doors when noted)

9 SW 6230 Rainstorm
(To include: All unit entry doors)

BLDG TYPE 1 - SCHEME 1 PLAN





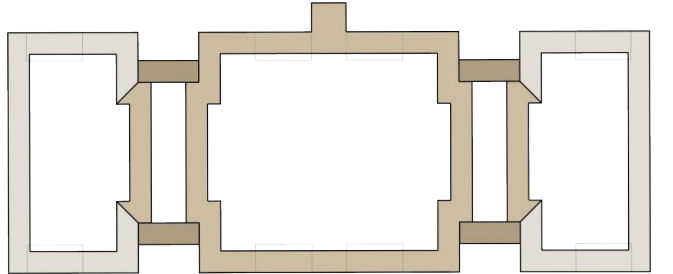
Scheme 2

- 4 Body Color A:
SW 7014 Eider White
(Main stucco body color)
- 5 Body Color B:
SW 6156 Ramie
- 6 Accent Body Color :
SW 7544 Fenland

Trim and Accent Colors (All Schemes)

- 7 SW 7015 Repose Gray
(To include: All window trim and horizontal banding)
- 8 SW 7034 Status Bronze
(To include: fascia, soffits, window mullions, all previously painted metal, unit doors when noted)
- 9 SW 6230 Rainstorm
(To include: All unit entry doors)
- 10 SW 6227 Meditative
(To include: balcony porch ceilings and building signage)

BLDG TYPE 1 - SCHEME 2 PLAN





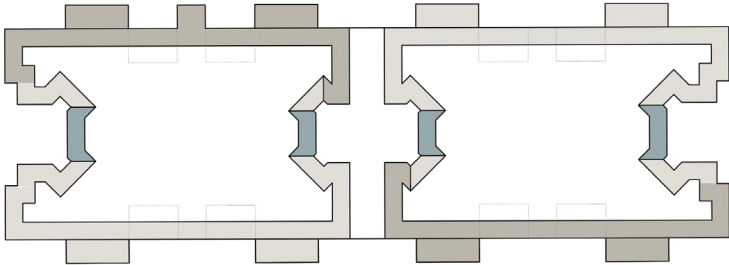
Scheme 1

- 1 Body Color A:
SW 7014 Eider White
(Main stucco body color)
- 2 Body Color B:
SW 7016 Mindful Gray
- 3 Accent Body Color:
SW 6227 Meditative
(To include: balcony and porch ceilings, all signage)

Trim and Accent Colors (All Schemes)

- 7 SW 7015 Repose Gray
(To include: All window trim and horizontal banding)
- 8 SW 7034 Status Bronze
(To include: fascia, soffits, window mullions, all previously painted metal, unit doors when noted)
- 9 SW 6230 Rainstorm
(To include: All unit entry doors)

BLDG TYPE 2 - SCHEME 1 PLAN





Scheme 1

1 Body Color A:
SW 7014 Eider White
(Main stucco body color)

2 Body Color B:
SW 7016 Mindful Gray

3 Accent Body Color:
SW 6227 Meditative
(To include: balcony and porch ceilings, all signage)

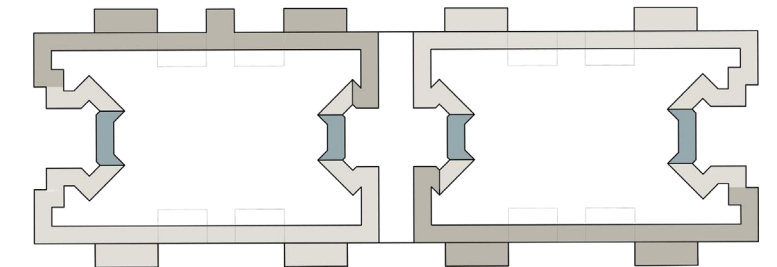
Trim and Accent Colors (All Schemes)

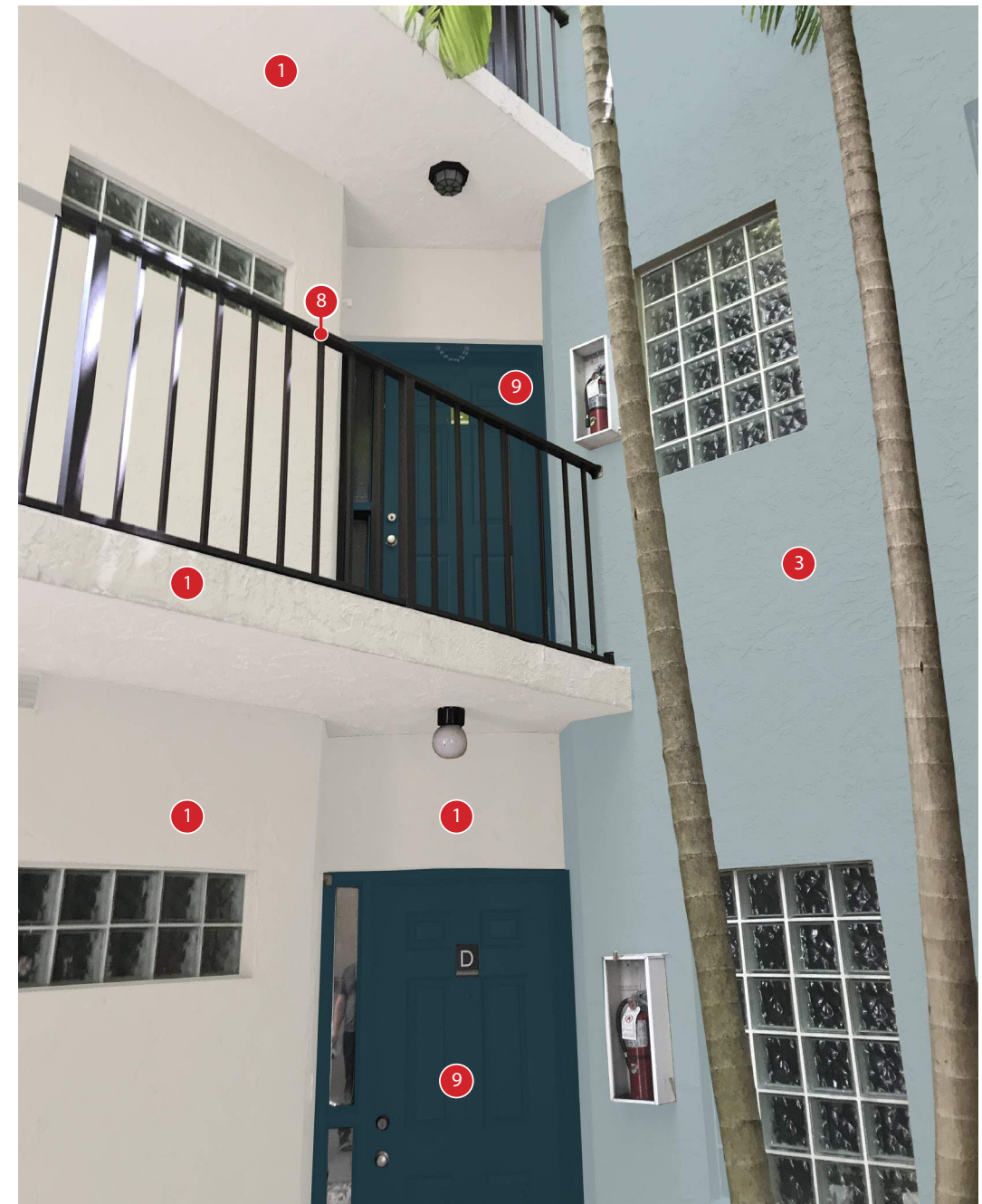
7 SW 7015 Repose Gray
(To include: All window trim and horizontal banding)

8 SW 7034 Status Bronze
(To include: fascia, soffits, window mullions, all previously painted metal, unit doors when noted)

9 SW 6230 Rainstorm
(To include: All unit entry doors)

BLDG TYPE 2 - SCHEME 1 PLAN





Scheme 1

1 Body Color A:
SW 7014 Eider White
(Main stucco body color)

2 Body Color B:
SW 7016 Mindful Gray

3 Accent Body Color:
SW 6227 Meditative
(To include: balcony and porch ceilings, all signage)

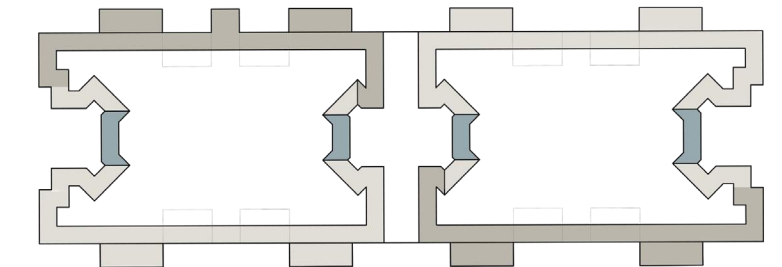
Trim and Accent Colors (All Schemes)

7 SW 7015 Repose Gray
(To include: All window trim and horizontal banding)

8 SW 7034 Status Bronze
(To include: fascia, soffits, window mullions, all previously painted metal, unit doors when noted)

9 SW 6230 Rainstorm
(To include: All unit entry doors)

BLDG TYPE 2 - SCHEME 1 PLAN





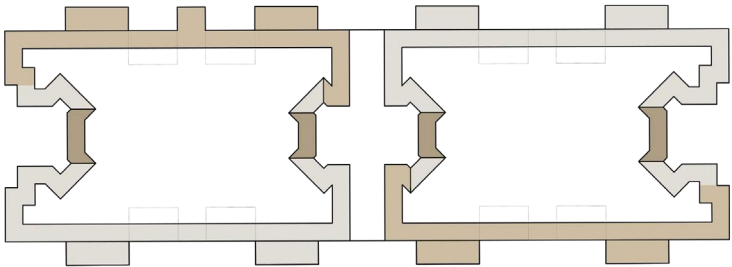
Scheme 2

- 4 Body Color A:
SW 7014 Eider White
(Main stucco body color)
- 5 Body Color B:
SW 6156 Ramie
- 6 Accent Body Color :
SW 7544 Fenland

Trim and Accent Colors (All Schemes)

- 7 SW 7015 Repose Gray
(To include: All window trim and horizontal banding)
- 8 SW 7034 Status Bronze
(To include: fascia, soffits, window mullions, all previously painted metal, unit doors when noted)
- 9 SW 6230 Rainstorm
(To include: All unit entry doors)
- 10 SW 6227 Meditative
(To include: balcony porch ceilings and building signage)

BLDG TYPE 2 - SCHEME 2 PLAN





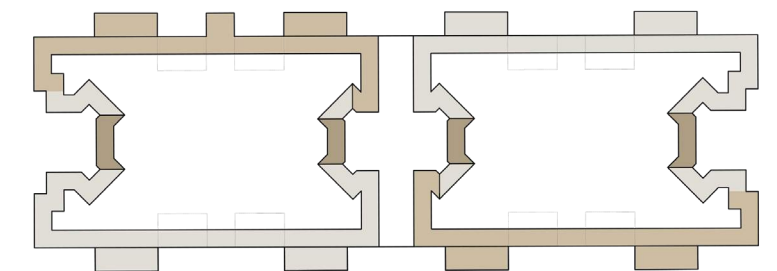
Scheme 2

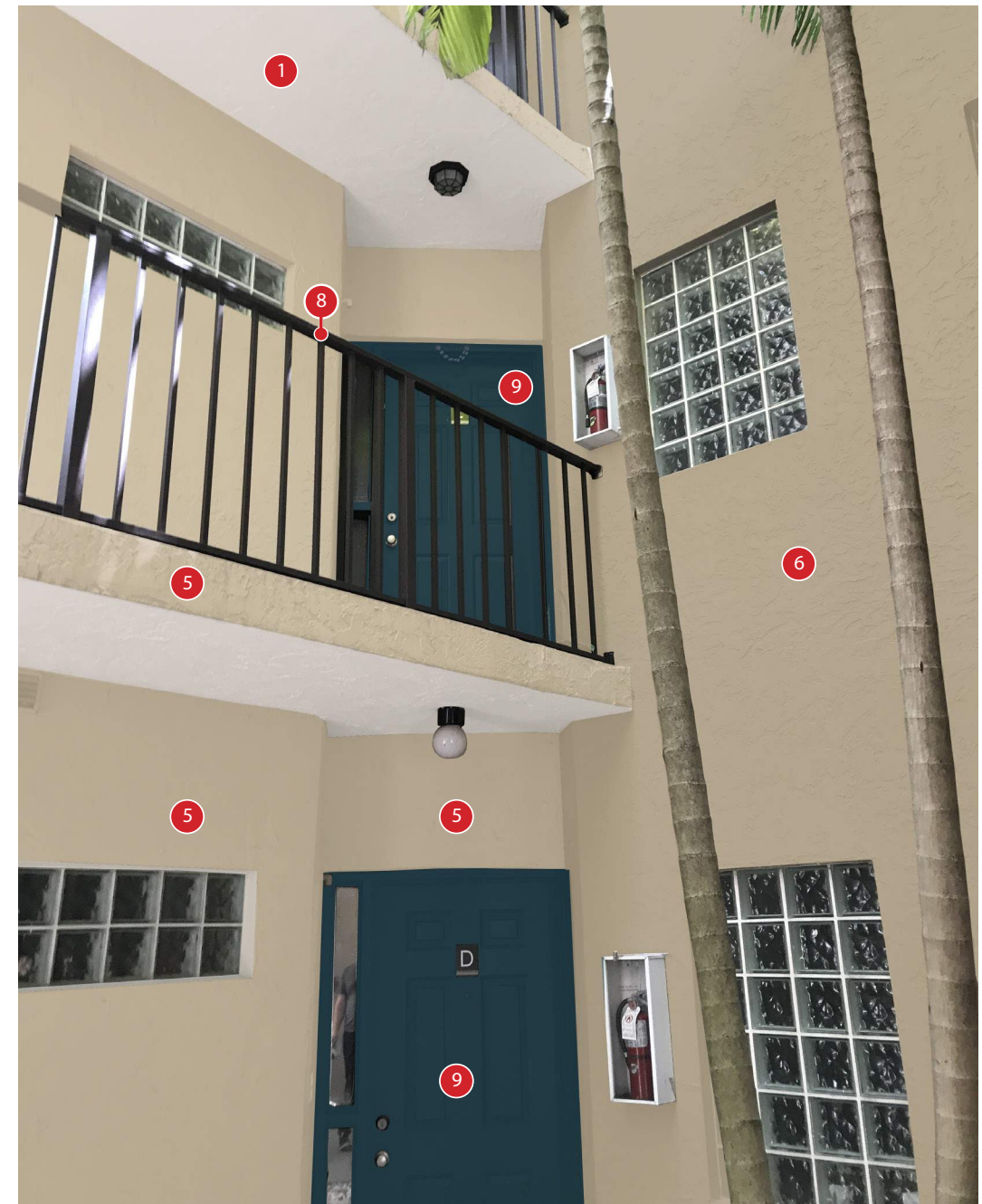
- Body Color A:
SW 7014 Eider White
(Main stucco body color)
- Body Color B:
SW 6156 Ramie
- Accent Body Color :
SW 7544 Fenland

Trim and Accent Colors (All Schemes)

- SW 7015 Repose Gray
(To include: All window trim and horizontal banding)
- SW 7034 Status Bronze
(To include: fascia, soffits, window mullions, all previously painted metal, unit doors when noted)
- SW 6230 Rainstorm
(To include: All unit entry doors)
- SW 6227 Meditative
(To include: balcony porch ceilings and building signage)

BLDG TYPE 2 - SCHEME 2 PLAN





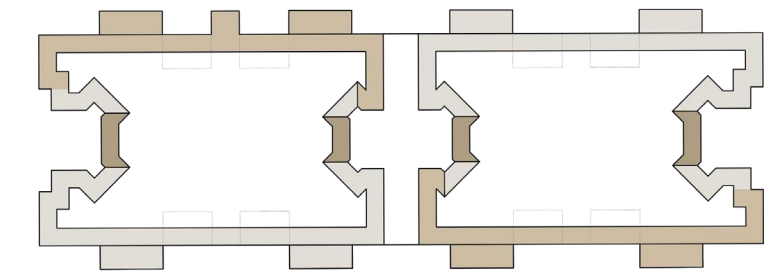
Scheme 2

- Body Color A:
SW 7014 Eider White
(Main stucco body color)
- Body Color B:
SW 6156 Ramie
- Accent Body Color :
SW 7544 Fenland

Trim and Accent Colors (All Schemes)

- SW 7015 Repose Gray
(To include: All window trim and horizontal banding)
- SW 7034 Status Bronze
(To include: fascia, soffits, window mullions, all previously painted metal, unit doors when noted)
- SW 6230 Rainstorm
(To include: All unit entry doors)
- SW 6227 Meditative
(To include: balcony porch ceilings and building signage)

BLDG TYPE 2 - SCHEME 2 PLAN





Scheme 1

1 Body Color A:
SW 7014 Eider White
(Main stucco body color)

2 Body Color B:
SW 7016 Mindful Gray

3 Accent Body Color:
SW 6227 Meditative
(To include: balcony and porch ceilings, all signage)

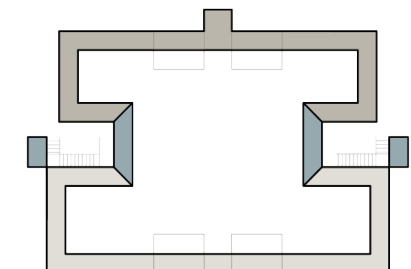
Trim and Accent Colors (All Schemes)

7 SW 7015 Repose Gray
(To include: All window trim and horizontal banding)

8 SW 7034 Status Bronze
(To include: fascia, soffits, window mullions, all previously painted metal, unit doors when noted)

9 SW 6230 Rainstorm
(To include: All unit entry doors)

BLDG TYPE 3 - SCHEME 1 PLAN





Body color to break at
inside corner, TYP.

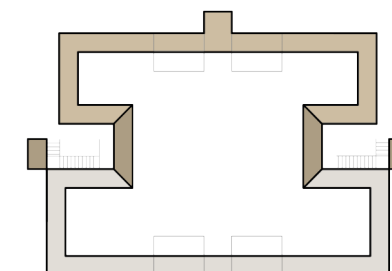
Scheme 2

- 4 Body Color A:
SW 7014 Eider White
(Main stucco body color)
- 5 Body Color B:
SW 6156 Ramie
- 6 Accent Body Color :
SW 7544 Fenland

Trim and Accent Colors (All Schemes)

- 7 SW 7015 Repose Gray
(To include: All window trim and horizontal banding)
- 8 SW 7034 Status Bronze
(To include: fascia, soffits, window mullions, all previously painted metal, unit doors when noted)
- 9 SW 6230 Rainstorm
(To include: All unit entry doors)
- 10 SW 6227 Meditative
(To include: balcony porch ceilings and building signage)

BLDG TYPE 3 - SCHEME 2 PLAN





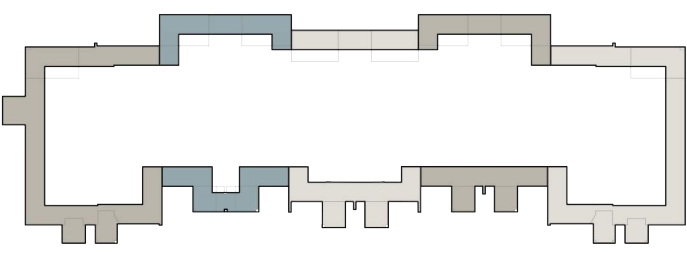
Scheme 1

- 1 Body Color A:
SW 7014 Eider White
(Main stucco body color)
- 2 Body Color B:
SW 7016 Mindful Gray
- 3 Accent Body Color:
SW 6227 Meditative
(To include: balcony and porch ceilings, all signage)

Trim and Accent Colors (All Schemes)

- 7 SW 7015 Repose Gray
(To include: All window trim and horizontal banding)
- 8 SW 7034 Status Bronze
(To include: fascia, soffits, window mullions, all previously painted metal, unit doors when noted)
- 9 SW 6230 Rainstorm
(To include: All unit entry doors)

BLDG TYPE 4 - SCHEME 1 PLAN





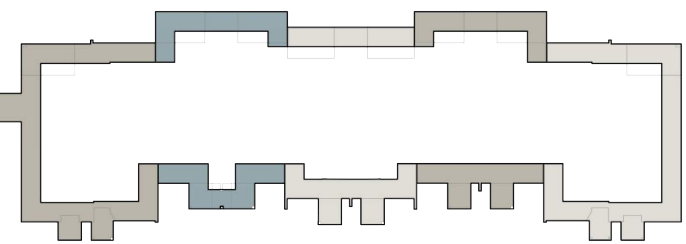
Scheme 1

- 1 Body Color A:
SW 7014 Eider White
(Main stucco body color)
- 2 Body Color B:
SW 7016 Mindful Gray
- 3 Accent Body Color:
SW 6227 Meditative
(To include: balcony and porch ceilings, all signage)

Trim and Accent Colors (All Schemes)

- 7 SW 7015 Repose Gray
(To include: All window trim and horizontal banding)
- 8 SW 7034 Status Bronze
(To include: fascia, soffits, window mullions, all previously painted metal, unit doors when noted)
- 9 SW 6230 Rainstorm
(To include: All unit entry doors)

BLDG TYPE 4 - SCHEME 1 PLAN





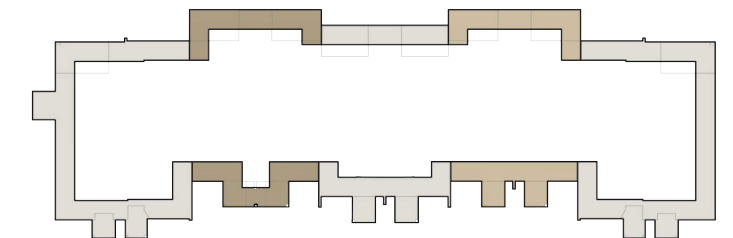
Scheme 2

- 4 Body Color A:
SW 7014 Eider White
(Main stucco body color)
- 5 Body Color B:
SW 6156 Ramie
- 6 Accent Body Color :
SW 7544 Fenland

Trim and Accent Colors (All Schemes)

- 7 SW 7015 Repose Gray
(To include: All window trim and horizontal banding)
- 8 SW 7034 Status Bronze
(To include: fascia, soffits, window mullions, all previously painted metal, unit doors when noted)
- 9 SW 6230 Rainstorm
(To include: All unit entry doors)
- 10 SW 6227 Meditative
(To include: balcony porch ceilings and building signage)

BLDG TYPE 4 - SCHEME 2 PLAN





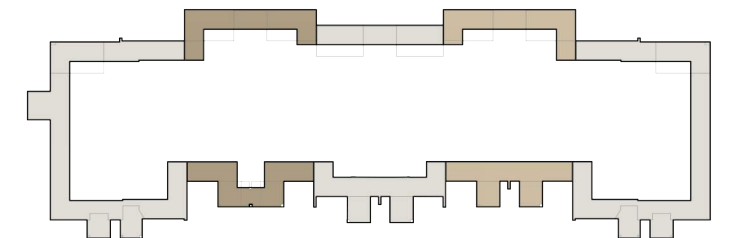
Scheme 2

- 4 Body Color A:
SW 7014 Eider White
(Main stucco body color)
- 5 Body Color B:
SW 6156 Ramie
- 6 Accent Body Color :
SW 7544 Fenland

Trim and Accent Colors (All Schemes)

- 7 SW 7015 Repose Gray
(To include: All window trim and horizontal banding)
- 8 SW 7034 Status Bronze
(To include: fascia, soffits, window mullions, all previously painted metal, unit doors when noted)
- 9 SW 6230 Rainstorm
(To include: All unit entry doors)
- 10 SW 6227 Meditative
(To include: balcony porch ceilings and building signage)

BLDG TYPE 4 - SCHEME 2 PLAN





Scheme 1

- 1 Body Color A:
SW 7014 Eider White
(Main stucco body color)
- 2 Body Color B:
SW 7016 Mindful Gray
- 3 Accent Body Color:
SW 6227 Meditative
(To include: balcony and porch ceilings, all signage)

Trim and Accent Colors (All Schemes)

- 7 SW 7015 Repose Gray
(To include: All window trim and horizontal banding)
- 9 SW 6230 Rainstorm
(To include: All unit entry doors)
- 8 SW 7034 Status Bronze
(To include: fascia, soffits, window mullions, all previously painted metal, unit doors when noted)

Signage

- 10 SW 6227 Meditative
(To include: All signage)
- 11 SW 7757 High Reflective White
(To include: Signage lettering and line detailing if painted. If not painted, new white acrylic letters to be applied.)