



Planning, Zoning, and Building Department

BOARD ACTION REPORT – APPEALABLE ITEM

Project Name: 161 SE 5th Avenue
Project Location: 161 SE 5th Avenue
Request: Color Change
Board: Site Plan Review and Appearance Board
Meeting Date: February 14, 2018

Board Action: Approved 6 – 0 (Fred Kaub absent)

Project Description:

The subject property is located on the east side of SE 5th Avenue between SE 1st Street and SE 2nd Street in the (CBD) Central Business District.

On February 14, 2018, the Site Plan Review and Appearance Board approved the color change for a multi family building from tan and beige to Rapture Blue with the trim of Briny.

Board Comments:

none

Public Comments:

None

Associated Actions:

none

Next Action:

SPARB action is final unless appealed by the City Commission.

SITE PLAN REVIEW AND APPEARANCE BOARD

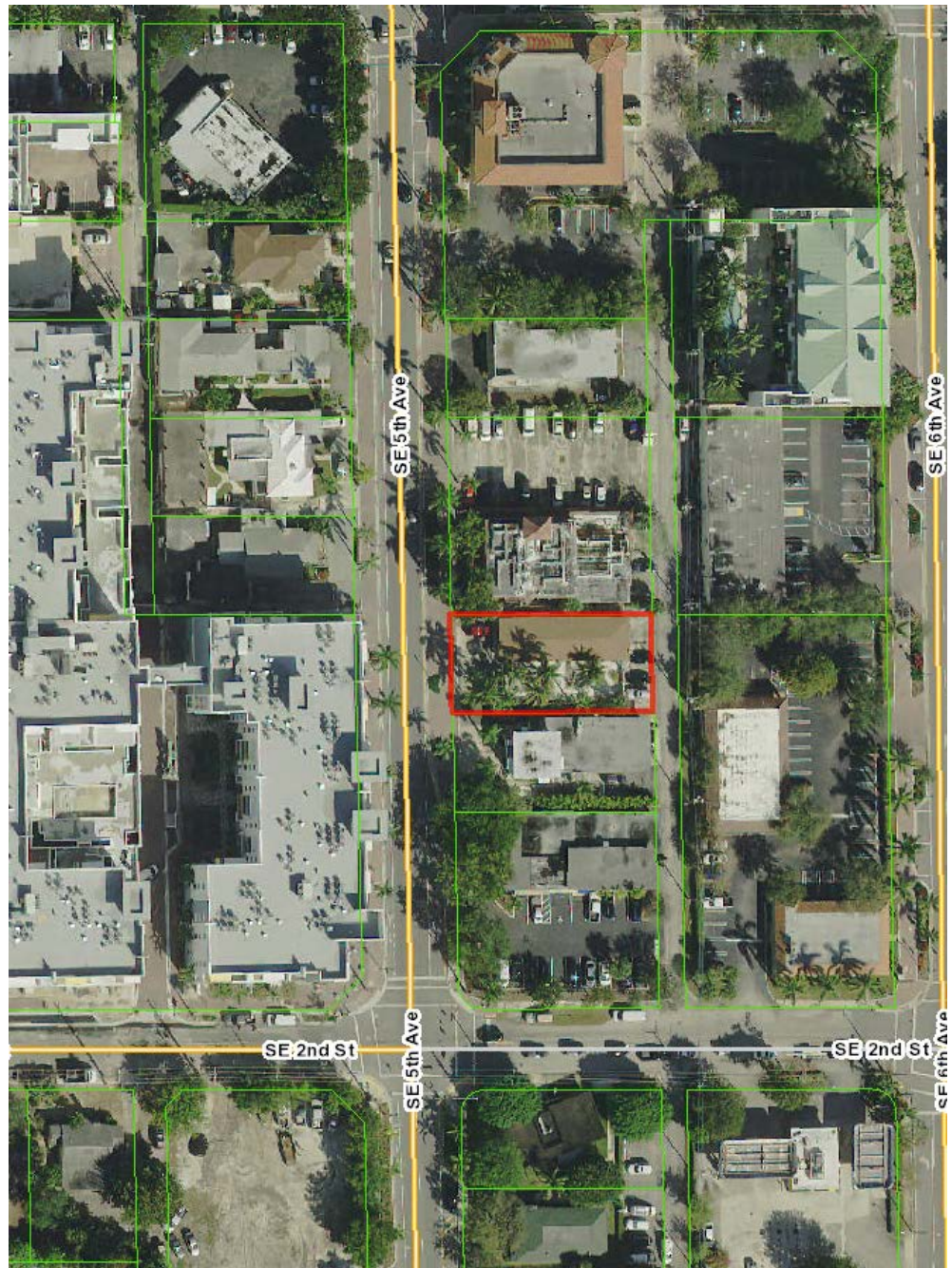
CITY OF DELRAY BEACH

---STAFF REPORT---

MEETING DATE: February 14, 2018

ITEM: (2018-016) Color change from tan and beige to Rapture Blue and Briny.

LOCATION MAP:





161 Delray Beach - ORIGINAL IMAGE - Photo One

Jonathan Bieschke

(954) 270-0976 • jonathan.m.bieschke@sherwin.com

The digitized image(s) shown approximate actual paint colors as closely as possible. Colors may vary due to viewing equipment, lighting conditions and printers.
The Cover The Earth logo and the Sherwin-Williams logo are trademarks owned or licensed by The Sherwin-Williams Company. © 2018 The Sherwin-Williams Company. CMD 18-03-0291 (1/2018)



161 Delray Beach - ORIGINAL IMAGE - Photo Two

Jonathan Bieschke

(954) 270-0976 • jonathan.m.bieschke@sherwin.com

The digitized image(s) shown approximate actual paint colors as closely as possible. Colors may vary due to viewing equipment, lighting conditions and printers.
The Cover The Earth logo and the Sherwin-Williams logo are trademarks owned or licensed by The Sherwin-Williams Company. © 2018 The Sherwin-Williams Company. CMD 18-03-0291 (1/2018)



161 Delray Beach - ORIGINAL IMAGE - Photo Three

Jonathan Bieschke

(954) 270-0976 • jonathan.m.bieschke@sherwin.com

The digitized image(s) shown approximate actual paint colors as closely as possible. Colors may vary due to viewing equipment, lighting conditions and printers.
The Cover The Earth logo and the Sherwin-Williams logo are trademarks owned or licensed by The Sherwin-Williams Company. © 2018 The Sherwin-Williams Company. CMD 18-03-0291 (1/2018)



161 Delray Beach - ORIGINAL IMAGE - Photo Four

Jonathan Bieschke

(954) 270-0976 • jonathan.m.bieschke@sherwin.com

The digitized image(s) shown approximate actual paint colors as closely as possible. Colors may vary due to viewing equipment, lighting conditions and printers.
The Cover The Earth logo and the Sherwin-Williams logo are trademarks owned or licensed by The Sherwin-Williams Company. © 2018 The Sherwin-Williams Company. CMD 18-03-0291 (1/2018)



161 Delray Beach - ORIGINAL IMAGE - Photo Five

Jonathan Bieschke

(954) 270-0976 • jonathan.m.bieschke@sherwin.com

The digitized image(s) shown approximate actual paint colors as closely as possible. Colors may vary due to viewing equipment, lighting conditions and printers.

The Cover The Earth logo and the Sherwin-Williams logo are trademarks owned or licensed by The Sherwin-Williams Company. © 2018 The Sherwin-Williams Company. CMD 18-03-0291 (1/2018)



161 Delray Beach - ORIGINAL IMAGE - Photo Seven

Jonathan Bieschke

(954) 270-0976 • jonathan.m.bieschke@sherwin.com

The digitized image(s) shown approximate actual paint colors as closely as possible. Colors may vary due to viewing equipment, lighting conditions and printers.
The Cover The Earth logo and the Sherwin-Williams logo are trademarks owned or licensed by The Sherwin-Williams Company. © 2018 The Sherwin-Williams Company. CMD 18-03-0291 (1/2018)



SW 6773
Rapture Blue

Body

SW 6775
Briny

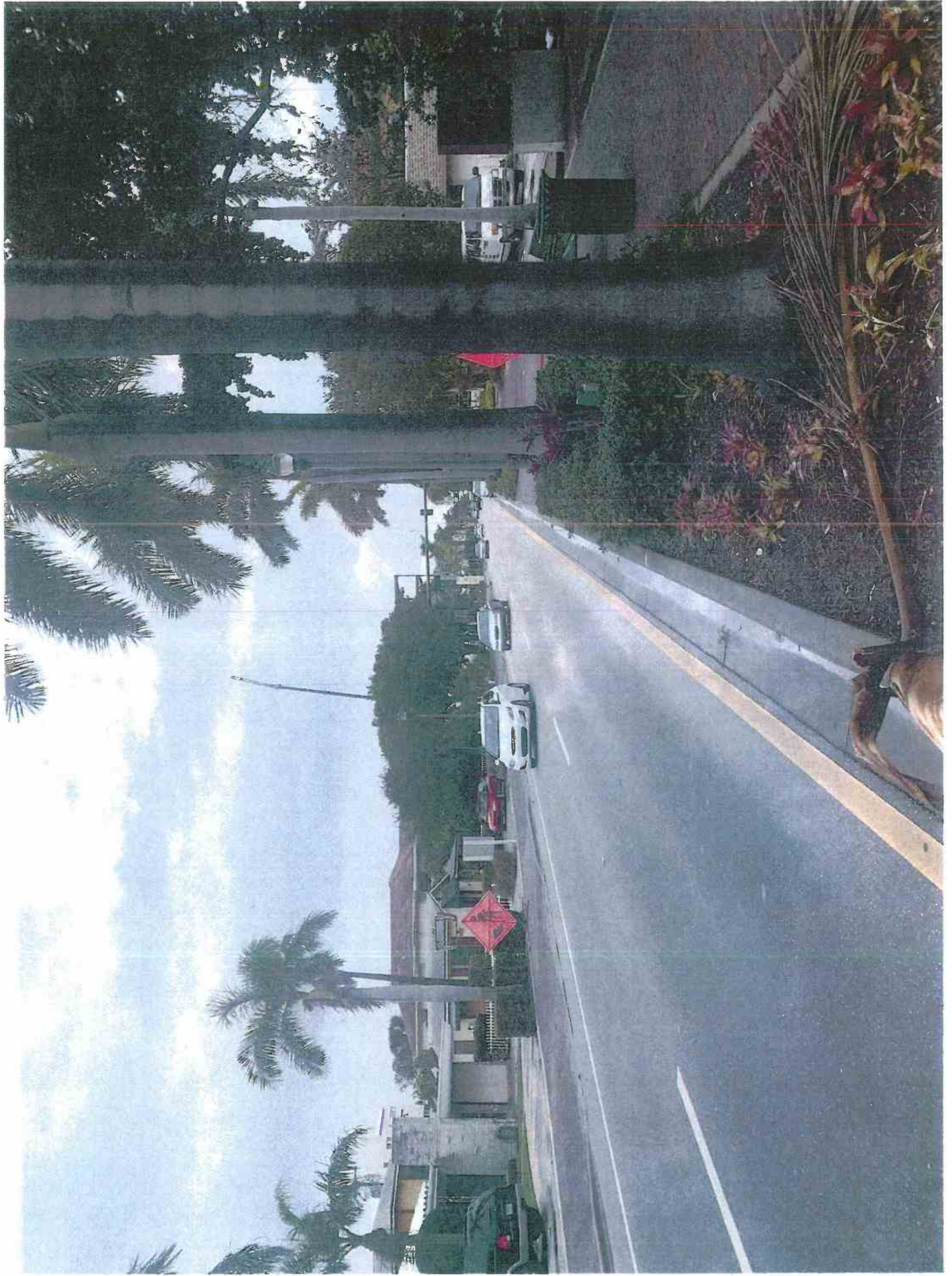
Trim



Property to the North



161 SE 5th South Street View



161 SE St North Street View



Property to the South



161 Delray Beach - ORIGINAL IMAGE - Photo Eight

Jonathan Bieschke

(954) 270-0976 • jonathan.m.bieschke@sherwin.com

The digitized image(s) shown approximate actual paint colors as closely as possible. Colors may vary due to viewing equipment, lighting conditions and printers.
The Cover The Earth logo and the Sherwin-Williams logo are trademarks owned or licensed by The Sherwin-Williams Company. © 2018 The Sherwin-Williams Company. CMD 18-03-0291 (1/2018)



SW 6773
Tropicana Blue

Body

SW 6775
Briny

Trim



SW 6773
Rapture Blue

Body

SW 6775
Briny

Trim



SW 6778
Papyrus Blue

Body

SW 6775
Briny

Trim



SW 6773
Rapture Blue

Body

SW 6775
Briny

Trim



SW 8773
Rapture Blue

Body

SW 6775
Briny

Trim



161 Delray Beach - ORIGINAL IMAGE - Photo Six

Jonathan Bieschke

(954) 270-0976 • jonathan.m.bieschke@sherwin.com

The digitized image(s) shown approximate actual paint colors as closely as possible. Colors may vary due to viewing equipment, lighting conditions and printers.
The Cover The Earth logo and the Sherwin-Williams logo are trademarks owned or licensed by The Sherwin-Williams Company. © 2018 The Sherwin-Williams Company. CMD 18-03-0291 (1/2018)



SW 6773
Rapture Blue

Body

SW 6775
Briny

Trim