



Planning, Zoning and Building Department

BOARD ACTION REPORT – APPEALABLE ITEM

Project Name: 321 N. Congress Avenue
Project Location: 321 N. Congress Avenue
Request: Approval of a Color Change
Board: Site Plan Review and Appearance Board
Meeting Date: February 28, 2018

Board Action:

Approved (4-0, Robert Long, Annie Adkins-Roof and Roger Cope absent) to change from white and dark blue trim to Essential Grey, Extra White and Leisure Blue.

Project Description:

The subject property is located on east side of Congress Avenue between Atlantic Avenue and Lake Ida Rd in the Mixed Industrial Commercial zoning district. The subject property is approximately 1.22 acres.

Staff Recommendation:

N/A

Board Comments:

none

Public Comments:

none

Associated Actions:

N/A

Next Action:

The SPRAB action is final unless appealed by the City Commission.

SITE PLAN REVIEW AND APPEARANCE BOARD

CITY OF DELRAY BEACH

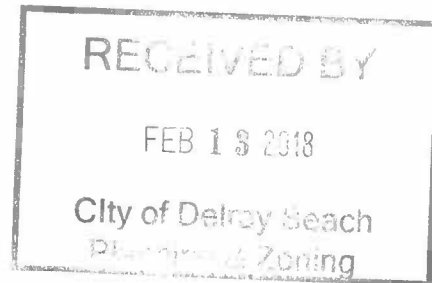
---STAFF REPORT---

MEETING DATE: February 28, 2018

ITEM: (2018-028) Color change from white and dark blue to light grey and leisure blue and white.

LOCATION MAP:





SHERWIN-WILLIAMS.
PHOTO IMAGING

321 N Congress - ORIGINAL IMAGE



Eduardo Feliu

18-03-0557 • eduardo.feliu@sherwin.com

The digitized image(s) shown approximate actual paint colors as closely as possible. Colors may vary due to viewing equipment, lighting conditions and printers.

The Cover The Earth logo and the Sherwin-Williams logo are trademarks owned or licensed by The Sherwin-Williams Company. © 2016 The Sherwin-Williams Company. CMD 18-03-0557 (2/2018)

SHERWIN-WILLIAMS.
PHOTO IMAGING

321 N Congress

Image One, Scheme One A

Front West



SW 6002
Essential Gray

Body / Doors

SW 7006
Extra White

Trim / Garage Doors

SW 6515
Leisure Blue

Accent

The digitized image(s) shown approximate actual paint colors as closely as possible. Colors may vary due to viewing equipment, lighting conditions and printers. The Cover The Earth logo and the Sherwin-Williams logo are trademarks owned or licensed by The Sherwin-Williams Company.
© 2016 The Sherwin-Williams Company. CMD 18-03-0557 (2/2018)

SHERWIN-WILLIAMS.
PHOTO IMAGING

321 N Congress - ORIGINAL IMAGE



Eduardo Feliu

18-03-0557 • eduardo.feliu@sherwin.com

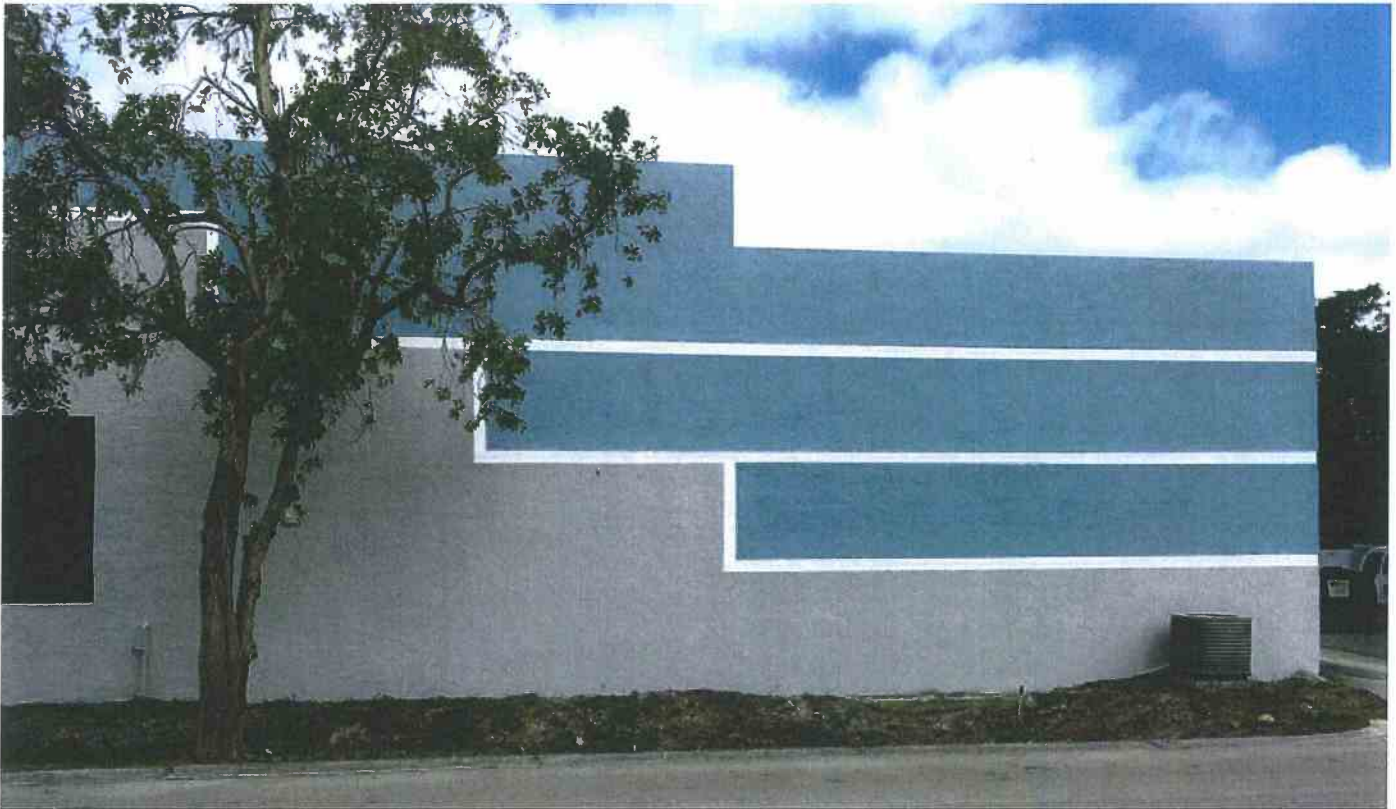
The digitized image(s) shown approximate actual paint colors as closely as possible. Colors may vary due to viewing equipment, lighting conditions and printers.
The Cover The Earth logo and the Sherwin-Williams logo are trademarks owned or licensed by The Sherwin-Williams Company. © 2016 The Sherwin-Williams Company. CMD 18-03-0557 (2/2018)

Left NW

SHERWIN-WILLIAMS.
PHOTO IMAGING

321 N Congress

Image Two, Scheme One



SW 6002
Essential Gray

Body / Doors



SW 7006
Extra White

Trim / Garage Doors



SW 6515
Leisure Blue

Accent

The digitized image(s) shown approximate actual paint colors as closely as possible. Colors may vary due to viewing equipment, lighting conditions and printers. The Cover The Earth logo and the Sherwin-Williams logo are trademarks owned or licensed by The Sherwin-Williams Company.
© 2016 The Sherwin-Williams Company. CMD 18-03-0557 (2/2018)

SHERWIN-WILLIAMS.
PHOTO IMAGING



321 N Congress - ORIGINAL IMAGE

Eduardo Feliu

18-03-0557 • eduardo.feliu@sherwin.com

The digitized image(s) shown approximate actual paint colors as closely as possible. Colors may vary due to viewing equipment, lighting conditions and printers.
The Cover The Earth logo and the Sherwin-Williams logo are trademarks owned or licensed by The Sherwin-Williams Company. © 2016 The Sherwin-Williams Company. CMD 18-03-0557 (2/2018)

Back East

SHERWIN-WILLIAMS.
PHOTO IMAGING

321 N Congress

Image Four, Scheme One B



SW 6002
Essential Gray

Body / Doors



SW 7006
Extra White

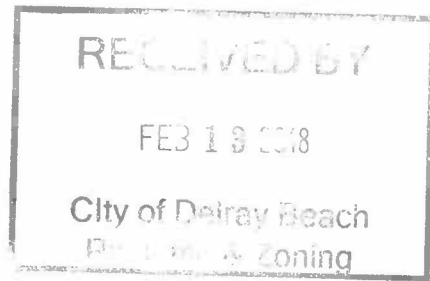
Trim / Garage Doors



SW 6515
Leisure Blue

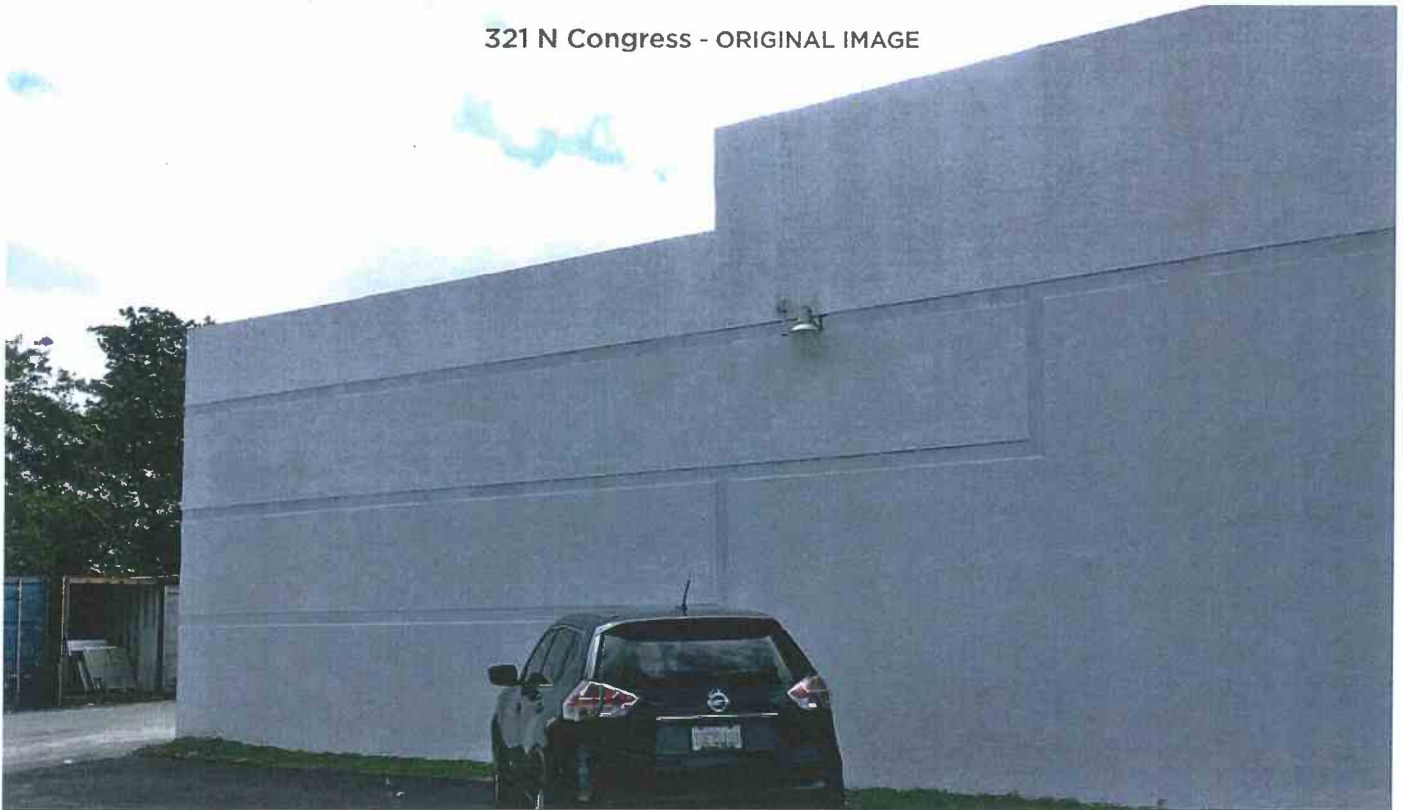
Accent

The digitized image(s) shown approximate actual paint colors as closely as possible. Colors may vary due to viewing equipment, lighting conditions and printers. The Cover The Earth logo and the Sherwin-Williams logo are trademarks owned or licensed by The Sherwin-Williams Company.
© 2016 The Sherwin-Williams Company. CMD 18-03-0557 (2/2018)



SHERWIN-WILLIAMS.
PHOTO IMAGING

321 N Congress - ORIGINAL IMAGE



Eduardo Feliu

18-03-0557 • eduardo.feliu@sherwin.com

The digitized image(s) shown approximate actual paint colors as closely as possible. Colors may vary due to viewing equipment, lighting conditions and printers.

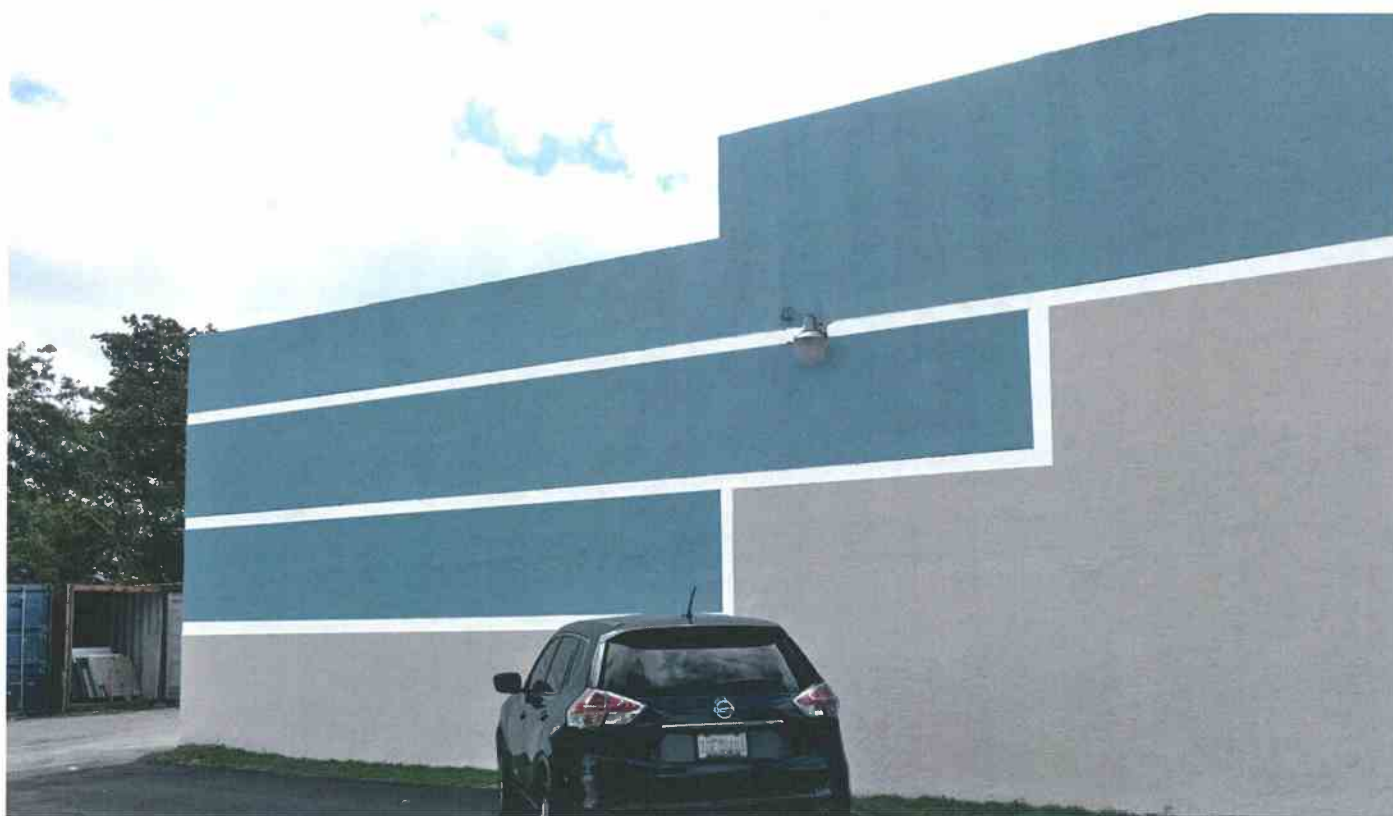
The Cover The Earth logo and the Sherwin-Williams logo are trademarks owned or licensed by The Sherwin-Williams Company. © 2016 The Sherwin-Williams Company. CMD 18-03-0557 (2/2018)

SHERWIN-WILLIAMS.
PHOTO IMAGING

Right SW

321 N Congress

Image Three, Scheme One



SW 6002
Essential Gray

Body / Doors

SW 7006
Extra White

Trim / Garage Doors

SW 6515
Leisure Blue

Accent

The digitized image(s) shown approximate actual paint colors as closely as possible. Colors may vary due to viewing equipment, lighting conditions and printers. The Cover The Earth logo and the Sherwin-Williams logo are trademarks owned or licensed by The Sherwin-Williams Company.
© 2016 The Sherwin-Williams Company. CMD 18-03-0557 (2/2018)







