

DESCRIPTION:

A PARCEL OF LAND SITUATED IN SECTION 26, TOWNSHIP 46 SOUTH, RANGE 42 EAST, PALM BEACH COUNTY, FLORIDA BEING MORE PARTICULARLY DESCRIBED AS FOLLOWS:

COMMENCING AT THE NORTHEAST CORNER OF SAID SECTION 26; THENCE, ALONG THE EAST LINE OF SAID SECTION 26, SOUTH 01°22'37" EAST, A DISTANCE OF 593.61 FEET; THENCE, DEPARTING SAID EAST LINE, SOUTH 89°37'23" WEST, A DISTANCE OF 114.22 FEET TO THE POINT OF BEGINNING;

THENCE NORTH 89°43'31" WEST, A DISTANCE OF 12.00 FEET; THENCE NORTH 00°50'03" WEST, A DISTANCE OF 10.02 FEET; THENCE SOUTH 89°52'57" WEST, A DISTANCE OF 68.52 FEET; THENCE NORTH 45°07'35" WEST, A DISTANCE OF 14.19 FEET; THENCE NORTH 00°00'00" WEST, A DISTANCE OF 17.34 FEET; THENCE NORTH 90°00'00" EAST, A DISTANCE OF 12.00 FEET; THENCE SOUTH 00°00'00" EAST, A DISTANCE OF 5.85 FEET; THENCE SOUTH 89°55'47" EAST, A DISTANCE OF 12.51 FEET; THENCE SOUTH 00°04'13" WEST, A DISTANCE OF 6.46 FEET; THENCE NORTH 89°52'57" EAST, A DISTANCE OF 53.86 FEET; THENCE NORTH 00°50'03" WEST, A DISTANCE OF 38.75 FEET; THENCE NORTH 01°25'18" WEST, A DISTANCE OF 63.46 FEET; THENCE NORTH 47°30'43" WEST, A DISTANCE OF 11.06 FEET; THENCE NORTH 90°00'00" WEST, A DISTANCE OF 44.66 FEET; THENCE SOUTH 44°57'56" WEST, A DISTANCE OF 9.74 FEET; THENCE SOUTH 00°06'46" WEST, A DISTANCE OF 67.82 FEET; THENCE NORTH 89°35'31" WEST, A DISTANCE OF 44.78 FEET; THENCE NORTH 00°51'12" WEST, A DISTANCE OF 12.00 FEET; THENCE SOUTH 89°35'31" EAST, A DISTANCE OF 32.98 FEET; THENCE NORTH 00°06'46" EAST, A DISTANCE OF 60.71 FEET; THENCE NORTH 44°57'56" EAST, A DISTANCE OF 19.67 FEET; THENCE SOUTH 90°00'00" EAST, A DISTANCE OF 54.30 FEET; THENCE SOUTH 47°30'43" EAST, A DISTANCE OF 20.83 FEET; THENCE SOUTH 01°25'18" EAST, A DISTANCE OF 62.84 FEET; THENCE SOUTH 89°00'58" EAST, A DISTANCE OF 32.63 FEET; THENCE SOUTH 00°26'28" EAST, A DISTANCE OF 12.00 FEET; THENCE NORTH 89°00'58" WEST, A DISTANCE OF 32.49 FEET; THENCE SOUTH 00°50'03" EAST, A DISTANCE OF 57.84 FEET TO THE POINT OF BEGINNING.

SAID LANDS SITUATE IN THE CITY OF DELRAY BEACH, PALM BEACH COUNTY, FLORIDA CONTAINING 5,507 SQUARE FEET OR 0.1264 ACRES, MORE OR LESS.

SUBJECT TO EASEMENTS, RESTRICTIONS, RESERVATIONS, COVENANTS, AND RIGHTS-OF-WAY OF RECORD.

NOTES:

1. REPRODUCTIONS OF THIS SKETCH ARE NOT VALID UNLESS SEALED WITH AN EMBOSSED SURVEYOR'S SEAL.
2. LANDS SHOWN HEREON ARE NOT ABSTRACTED FOR RIGHTS-OF-WAY, EASEMENTS, OWNERSHIP, OR OTHER INSTRUMENTS OF RECORD.
3. BEARINGS SHOWN HEREON ARE RELATIVE TO A GRID BEARING OF S01°22'37"E ALONG THE EAST LINE OF SECTION 26, TOWNSHIP 42 SOUTH, RANGE 42 EAST.
4. THE "LAND DESCRIPTION" HEREON WAS PREPARED BY THE SURVEYOR.
5. DATA SHOWN HEREON WAS COMPILED FROM THE INSTRUMENT OF RECORD AND DOES NOT CONSTITUTE A FIELD SURVEY AS SUCH.

CERTIFICATE:

I HEREBY CERTIFY THAT THE ATTACHED SKETCH OF DESCRIPTION OF THE HEREON DESCRIBED PROPERTY IS TRUE AND CORRECT TO THE BEST OF MY KNOWLEDGE AND BELIEF AS PREPARED UNDER MY DIRECTION ON APRIL 4, 2018. I FURTHER CERTIFY THAT THIS SKETCH OF DESCRIPTION MEETS THE STANDARDS OF PRACTICE SET FORTH IN RULE 5J-17 ADOPTED BY THE FLORIDA BOARD OF PROFESSIONAL SURVEYORS AND MAPPERS PURSUANT TO FLORIDA STATUTES 472.027.

SHEET 1 OF 2

**CAULFIELD & WHEELER, INC.**

CIVIL ENGINEERING - LAND PLANNING
LANDSCAPE ARCHITECTURE - SURVEYING

7900 GLADES ROAD - SUITE 100

BOCA RATON, FLORIDA 33434

PHONE (561)-392-1991 / FAX (561)-750-1452

DAVID P. LINDLEY
REGISTERED LAND
SURVEYOR NO. 5005
STATE OF FLORIDA
L.B. 3591

DATE 04/04/18

DRAWN BY DLS

F.B./ PG. N/A

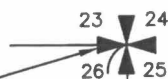
SCALE AS SHOWN

JOB NO. 7797 WE

**PALM COURT PLAZA
WATER EASEMENT
SKETCH OF DESCRIPTION**

SECTION 26-46S-42E
(ORB 11667, PG. 1872, PBCR)

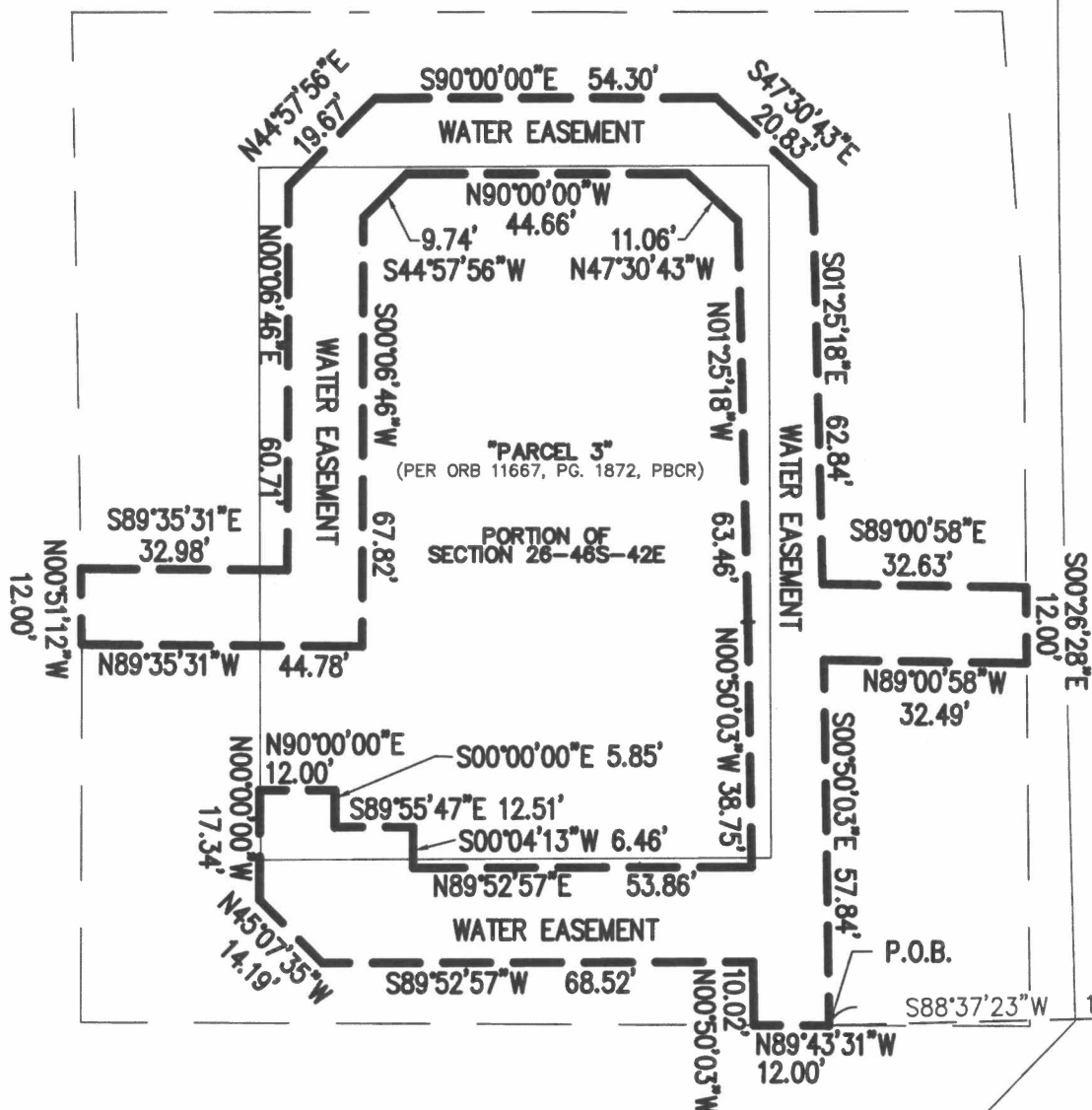
P.O.C.
N.E. CORNER OF
SECTION 26-46S-42E



MILITARY TRAIL / S.R. 809

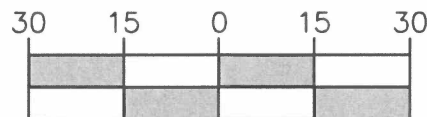
E. LINE SECTION 26-46S-42E
(BASIS OF BEARINGS)

S01°22'37"E
593.61'



LEGEND

PBCR - PALM BEACH COUNTY RECORDS
ORB - OFFICIAL RECORD BOOK
P.B. - PLAT BOOK
PG. - PAGE
PGS. - PAGES
P.O.B. - POINT OF BEGINNING
P.O.C. - POINT OF COMMENCEMENT



GRAPHIC SCALE
(IN FEET)

SHEET 2 OF 2



CAULFIELD & WHEELER, INC.

CIVIL ENGINEERING - LAND PLANNING
LANDSCAPE ARCHITECTURE - SURVEYING
7900 GLADES ROAD - SUITE 100
BOCA RATON, FLORIDA 33434
PHONE (561)-392-1991 / FAX (561)-750-1452

PALM COVE PLAZA
WATER EASEMENT
SKETCH OF DESCRIPTION

DATE 04/04/18

DRAWN BY DLS

F.B./ PG. N/A

SCALE AS SHOWN

JOB NO. 7797 WE