

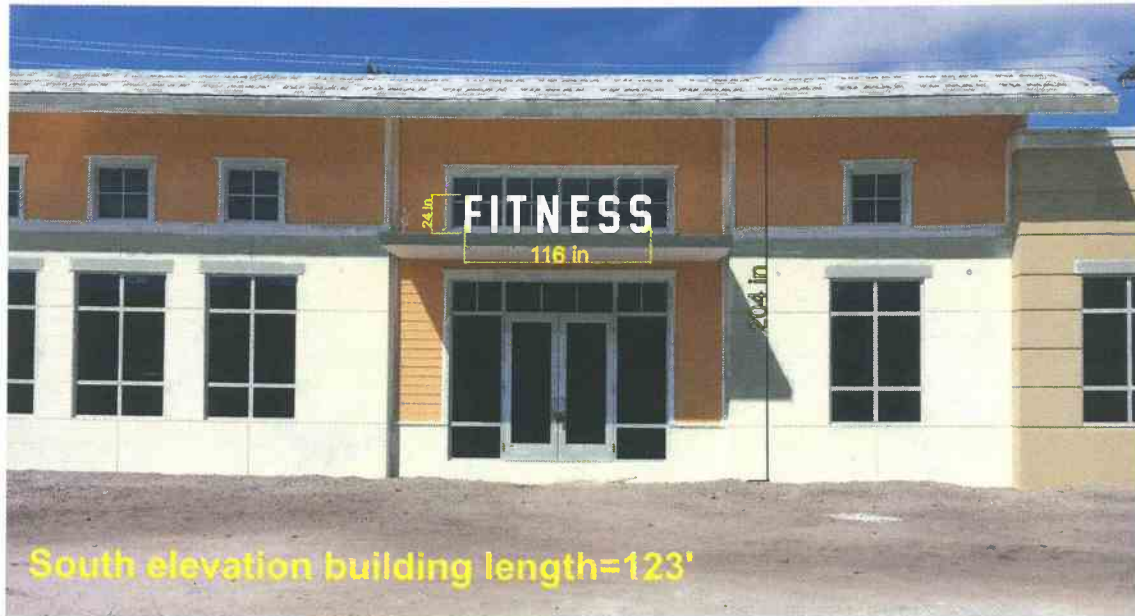
RECEIVED BY
JUL - 3 2018

City of Delray Beach
Planning & Zoning

2702 N Federal Hwy, Delray Beach

Front illuminated Channel Letter Sign

Mounted on a Raceway



South Elevation

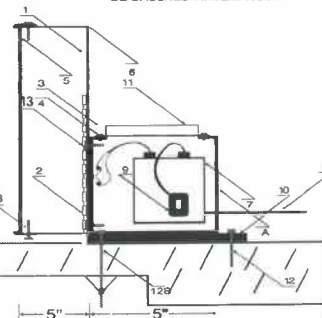
INSTALLATION DETAILS

LED/CHANNEL LETTER & RACEWAY SCHEMATIC & INSTALLATION DIAGRAM

LEGEND

- A... U.L. LISTED, 6"x6"x16", RACEWAY,
1.31" ANGLE, 240 BURN
- 1... LED DIODE MODULE
 - 2... POWER CONNECTOR
 - 3... POWER WIRE CONNECTOR
 - 4... LOW VOLTAGE CLASS 2 POWER
WIRE(S)-CABLE
 - 5... ACRYLIC CHANNEL FACE
 - 6... CHANNEL LETTER GAN
 - 7... LED POWER SUPPLY
 - 8... AC INPUT WIRE IN 1/2" NON
METALLIC CONDUIT TO AC
SOURCE BY OTHERS (EXISTING)
 - 9... DISCONNECT SWITCH
 - 10... 2"x7"x1/4" PLATE ALUMINUM
ATTACHMENT SUPPORT BARS
 - 11... ACCESS PANEL
 - 12A... 1/4"x4" TAPCONS, MIN EMBEDMENT 3"
 - 12B... 4" ON CENTER, TOP & BOTTOM,
MINIMUM 4 PER RACEWAY
 - 12C... 3/8"x8" GALVANIZED TOGGLE BOLTS
4" ON CENTER, TOP & BOTTOM,
MINIMUM 4 PER RACEWAY
 - 13... 3/16"x1" SELF TAPPING SCREWS
MINIMUM 4 PER LETTER
 - 14... CANOPY

★ ALL CANOPY PENETRATIONS SHALL
BE CAULKED WATERPROOF.



SQUARE FOOT CALCULATIONS:

Frontage = 123' x 12 x 15% = 225 Square Feet Allowable

PROPOSED SIGNAGE = 116" x 24" = 19 Sq ft

STRUCTURAL NOTES:

GOVERNING CODE: THE STRUCTURAL CALCULATIONS COMPLY WITH THE PROVISIONS OF SECTION 1609.1.1 OF THE 6th EDITION (2017) OF THE FLORIDA BUILDING CODE, AND IN ACCORDANCE WITH CHAPTERS 26-30 OF ASCE 7-10 (2010 EDITION), USING THE ULTIMATE WIND SPEED OF 175 MPH FOR PALM BEACH COUNTY (170 FOR BROWARD AND 175 FOR DADE COUNTIES), AND WHERE THE WIND MAP VALUES ARE CONVERTED TO THE ASD FORMAT USING $V_{asd} = V_{ult} / (\text{Sq. Root of } .6)$. ELECTRICAL INFORMATION PROVIDED AS REFERENCE ONLY AND IS TO BE INSTALLED BY A LICENSED CONTRACTOR, NO ENGINEERING CERTIFICATION IS OFFERED WITH ANY ELECTRICAL INFORMATION CONTAINED HEREIN.

ASSEMBLY PER NEC 600-3

Colors:

White acrylic faces, black trim cap,
black returns, white LED's.
Gray raceway.