



City of Delray Beach Grants

PROJECT: Brant Bridge Connector (also known as Lindell Loop Project)

PROGRAM: Local Initiatives

Federal Contribution: \$1,737,965 for construction

Local Contribution: \$797,103 for design and construction

Initial Cost Estimate: \$2,596,840 includes FDOT in-house support costs

Grant Award Year: 2017 Application for FY 2022 or 2023 Project Funding

Commission Approval: May 17, 2016 approved Resolution of Support

Entity Leading Design: City of Delray Beach

Design Start Date: 2021 **Design Completion Date:** 2022

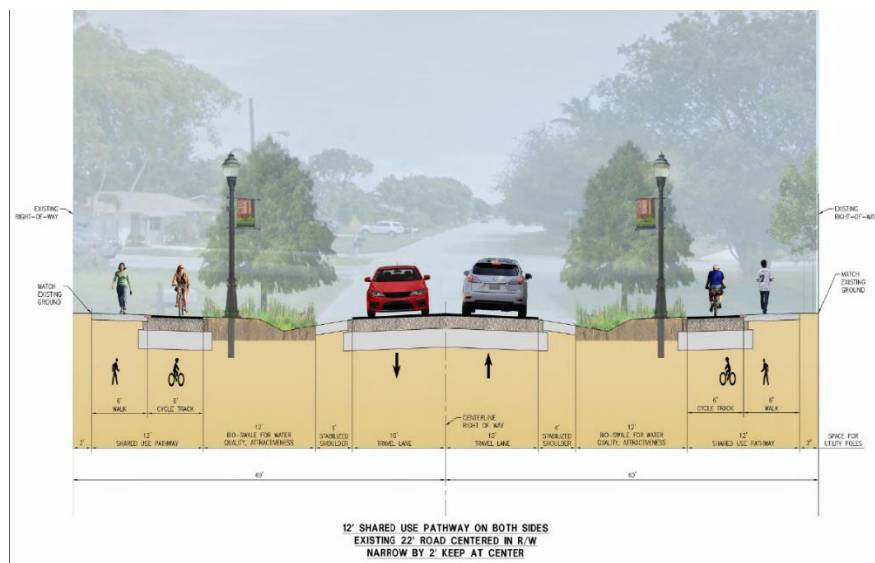
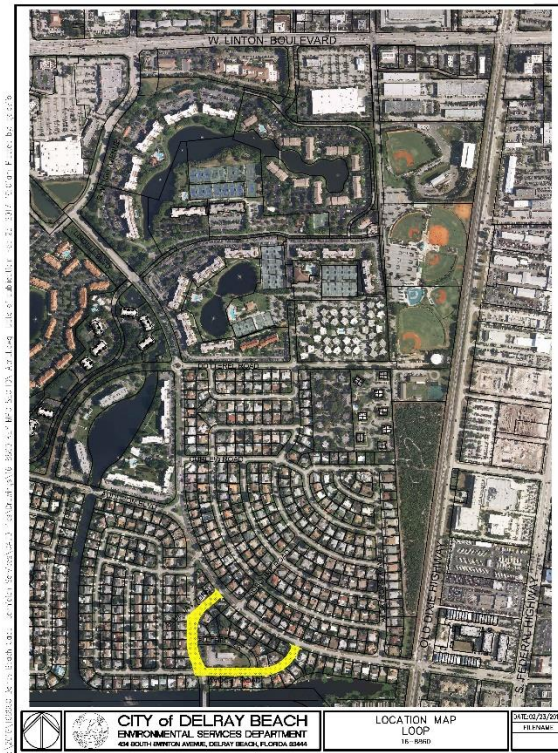
Construction Start Date: 2023 **Construction Completion Date:** TBD

Status: Design to be included in FY 21/22 Capital Improvement Program Budget

Description: This project will create sidewalks and multi-use pathways throughout the Tropic Palms neighborhood, curing deficiencies both for the Brant Bridge project and providing connection to the Lindell Loop Project, which is a companion project to the Brant Bridge / Brant Bridge Connector (Lindell Loop) / Lindell Boulevard Complete Streets project to complete this bicycle and pedestrian corridor. When completed, this three-part-project will allow bicyclists and pedestrians safer and more attractive passage to move from South Federal Highway to West Linton Boulevard near I-95 without having to travel in higher vehicular traffic commercial areas on US 1 and Linton Boulevard. Sidewalks and multi-use pathways will be created in the rights-of-way through the Tropic Palms neighborhood where currently sidewalks are intermittent and Americans with Disabilities Act (ADA) issues exist.

Benefits: This project will facilitate safe and more attractive bicycle and pedestrian travel in this corridor. The completion of this project supports City of Delray Beach pedestrian and bicycle mobility goals, as well as providing connection to other projects.

Risks: Significant Public Outreach efforts were required within this corridor to cure a perceived deficiency with community support. This issue has been completely resolved with support of the Tropic Palms Community for construction of this project.



Staff Recommendation: Move forward with this project.