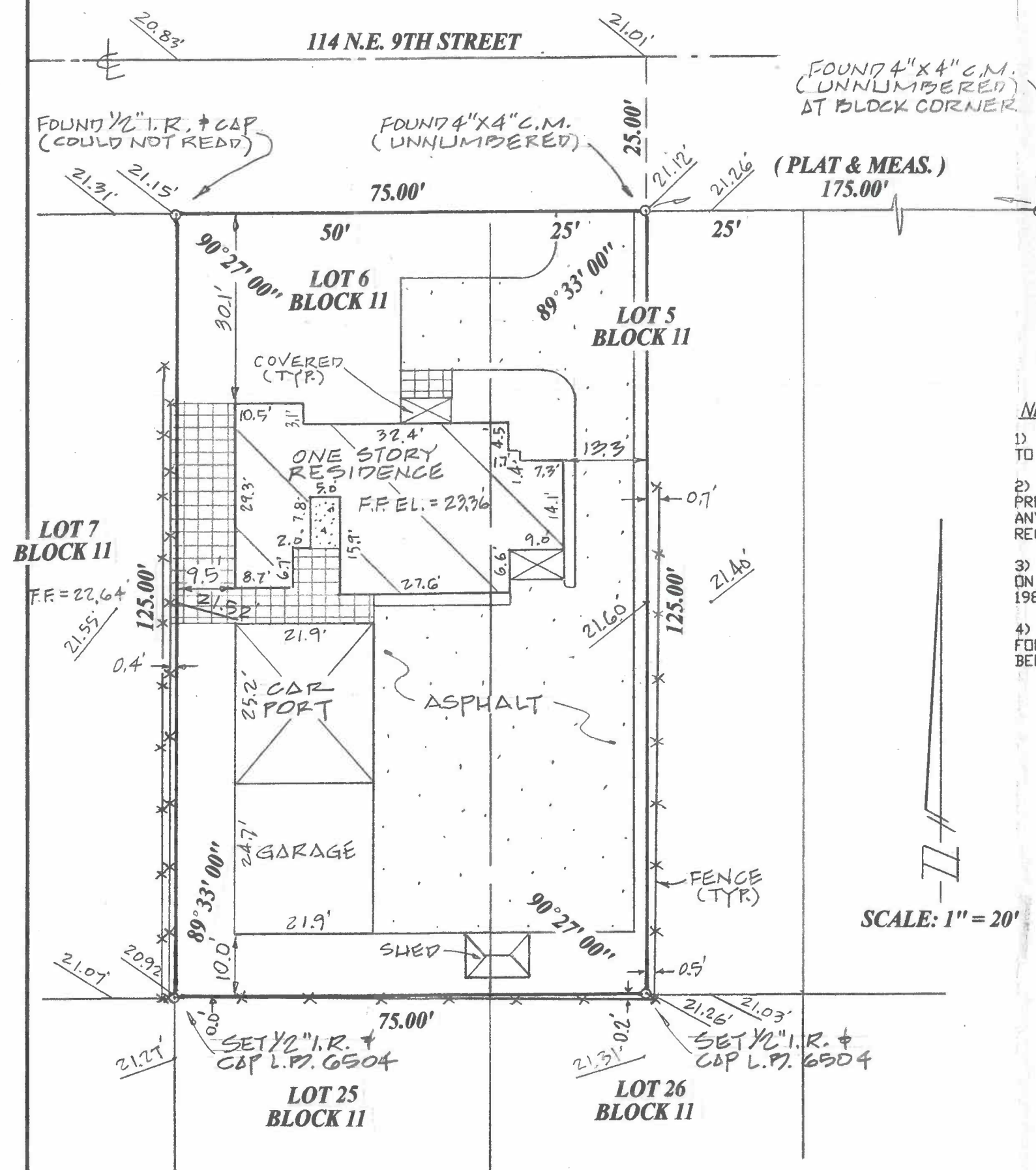


THE WEST 25 FEET OF LOT 5 AND ALL OF LOT 6, BLOCK 11

DELL PARK

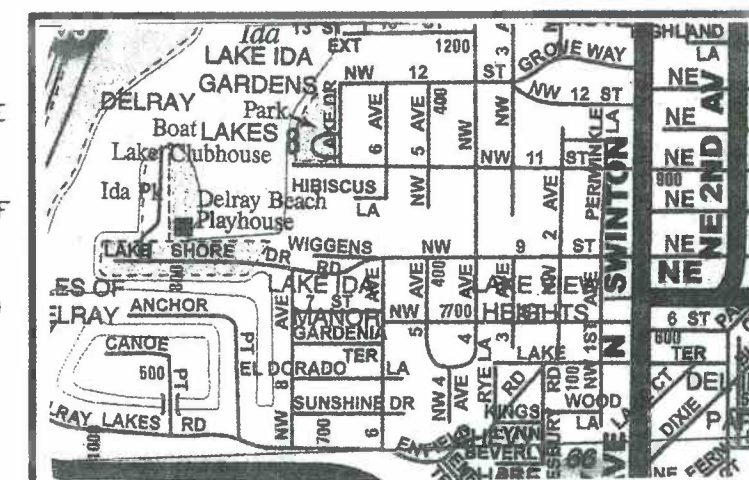
According To The Plat Recorded In Plat Book 8, Page 56, Recorded In The Public
Record Of Palm Beach County, Florida Said Land Situate, Lying, And Being In
Palm Beach County, Florida .

SITE COPY
18.178663



NOTES:

- 1) BEARINGS SHOWN HEREON ARE RELATIVE TO PLAT AND ARE ASSUMED.
- 2) NO ABSTRACT OR TITLE SEARCH WAS PERFORMED TO DISCOVER THE EXISTENCE OF ANY EASEMENTS OR RESTRICTIONS OF RECORD.
- 3) ELEVATIONS SHOWN HEREON ARE BASED ON NORTH AMERICA VERTICAL DATUM OF 1988 UNLESS OTHERWISE NOTED.
- 4) NO BELOW GROUND IMPROVEMENTS, FOOTERS, FOUNDATIONS OR UTILITIES HAVE BEEN LOCATED OR SHOWN ON THIS SURVEY.



NORTH
NOT TO SCALE
VICINITY
MAP

D.R.B. = official record book	TRAN. = transformer pad	P.B. = plat book	P = plat	P.G. = page
C.B.S. = concrete block structure	F.P.&L. = Florida power and light	TYP. = typical	Ø = power pole	I.R. = iron rod
P.C.C. = point of compound curve	CM = concrete monument	R/W = right-of-way	M = MEASURED	R = radius
P.C.P. = permanent control point	P.R.C. = point of reverse	Δ = central angle	I.P. = IRON PIPE	D = deed
P.O.C. = point of commencement	P.I. = point of intersection	⊙ = bearing basis line	RP = radius point	D/S = offset
P.O.B. = point of beginning	P.T. = point of tangency	ASPH = asphalt	L = ARC LENGTH	CONC. = concrete
D/E = drainage easement	* = not field measured	M.H. = manhole	CL = centerline	ESMT. = easement
C.M.P. = corrugated metal pipe	W.P.F. = wood privacy fence	U/E = utility easement	ALUM. = aluminum	CALC. = calculated
R.L.S. = registered land surveyor	CHATT = chattahoochee	CLF = chain link fence	P.C. = point of curvature	
L.B. = licensed business	ELEV = elevation	P.R.M. = permanent reference monument		



801 S.E. 6th Ave., Suite 101
Delray Beach, FL 33483

Phone 561-243-4624
Fax 243-4869

AUTHORIZATION NUMBER LB6504

I HEREBY CERTIFY THAT THE SKETCH OF BOUNDARY SURVEY SHOWN HEREON MEETS THE STANDARDS OF PRACTICE SET FORTH IN CHAPTER SJ-17-059-052, FLORIDA ADMINISTRATIVE CODE PURSUANT TO SECTION 472.027, FLORIDA STATUTES.

HARRY A. BURGESS PLS 5089

CERTIFIED TO:

MJZ PROPERTIES LLC,
A FLORIDA LIMITED LIABILITY COMPANY
EXPRESS TITLE SOLUTIONS, INC. D/B/A
NEW URBAN TITLE & ESCROW, INC.

DEVITT, THISTLE & LORENZO PLLC
OLD REPUBLIC NATIONAL TITLE INSURANCE COMPANY

FLOOD ZONE: "X"

MAP NO.: 12099C 0977F

MAP DATE: 10-5-17

DATE: 7-6-18

JOB NO. 6-18-033

REVISED:

NOT VALID
UNLESS SEALED
WITH EMBOSSED
SURVEYOR'S SEAL