



*Development Services Department*

**BOARD ACTION REPORT – APPEALABLE ITEM**

---

**Project Name:** 217 NE 4<sup>th</sup> Avenue  
**Project Location:** 217 NE 4<sup>th</sup> Avenue  
**Request:** Approval of a Color Change  
**Board:** Site Plan Review and Appearance Board  
**Meeting Date:** November 14, 2018

**Board Action:**

Approved (6-1 Roger Cope Dissenting) from Burnt Orange and Beige to Peanut Butter and Almond Latte.

**Project Description:**

The subject property is located on the East side of NE 4<sup>th</sup> Avenue north of NE 2<sup>nd</sup> Street in the (CBD) Central Business zoning District.

**Staff Recommendation:**

N/A

**Board Comments:**

none

**Public Comments:**

none

**Associated Actions:**

N/A

**Next Action:**

The SPRAB action is final unless appealed by the City Commission.

# SITE PLAN REVIEW AND APPEARANCE BOARD

## ---STAFF REPORT---

CITY OF DELRAY BEACH

**MEETING DATE:** November 14, 2018

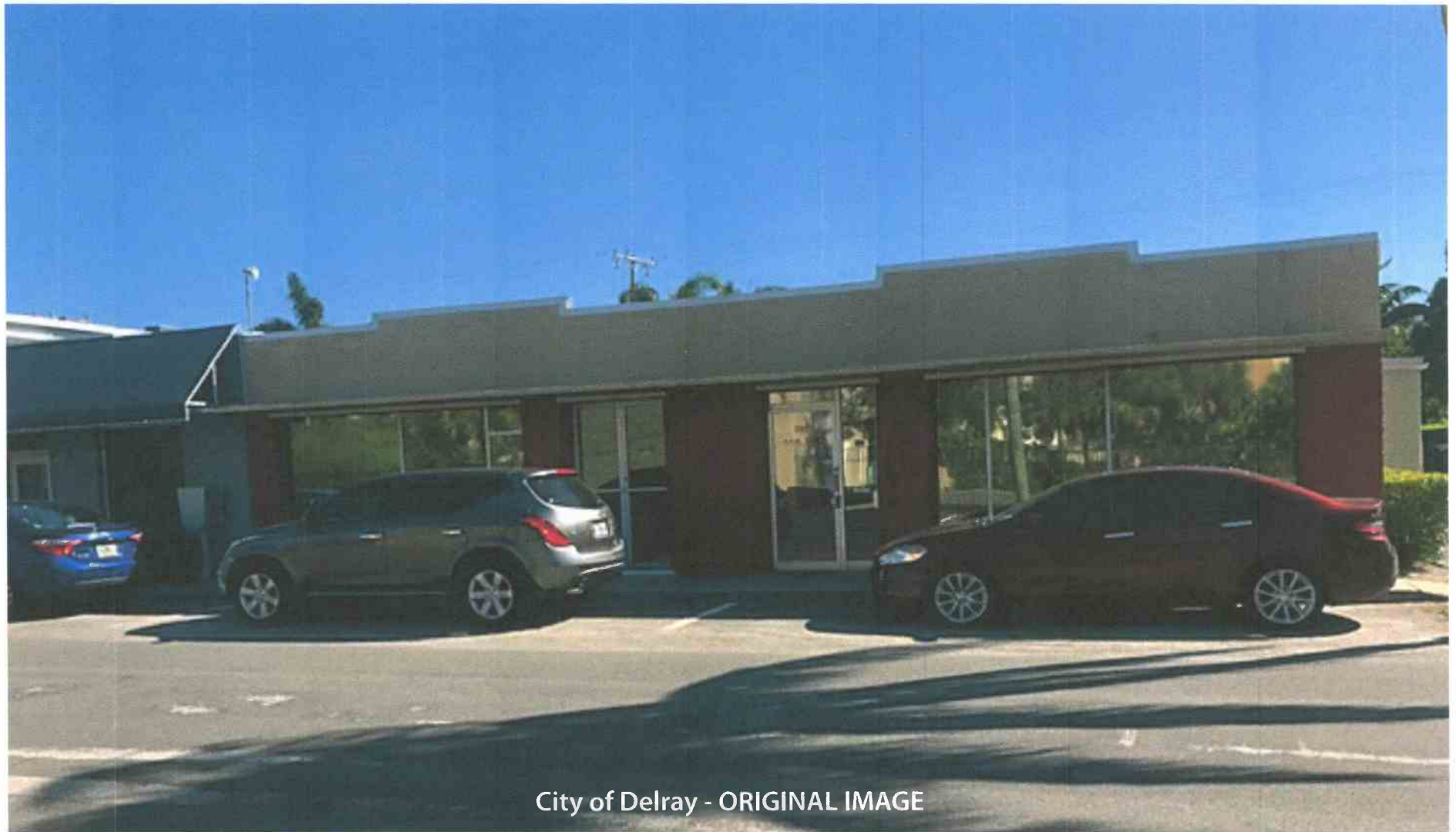
**ITEM:** Approval of a Color change (2019-039) from Burnt Orange and Beige on the building to Peanut Butter and Almond Latte on the walls located at 217 NE 4<sup>th</sup> Avenue.

### GENERAL DATA:

Applicant..... JRD Holding Corp.

Location..... East side of NE 4<sup>th</sup> Avenue north of NE 2<sup>nd</sup> Street





**Mary Bilthuis**

(561) 742-5663 • [sw2612@sherwin.com](mailto:sw2612@sherwin.com)

The digitized image(s) shown approximate actual paint colors as closely as possible. Colors may vary due to viewing equipment, lighting conditions and printers.  
The Cover The Earth logo and the Sherwin-Williams logo are trademarks owned or licensed by The Sherwin-Williams Company. © 2018 The Sherwin-Williams Company. CMD 18-03-4924 (10/2018)





**N260-2**  
**Almond Latte**

Upper Body

**270F-4**  
**Peanut Butter**

Lower Body



**N260-2**  
**Almond Latte**

Upper Body



**Mary Bilthuis**

(561) 742-5663 • [sw2612@sherwin.com](mailto:sw2612@sherwin.com)

The digitized image(s) shown approximate actual paint colors as closely as possible. Colors may vary due to viewing equipment, lighting conditions and printers.  
The Cover The Earth logo and the Sherwin-Williams logo are trademarks owned or licensed by The Sherwin-Williams Company. © 2018 The Sherwin-Williams Company. CMD 18-03-4924 (10/2018)



