



**DELRAY BEACH** CRA  
COMMUNITY REDEVELOPMENT AGENCY

# Conceptual Design Proposal 95 SW 5<sup>th</sup> Ave Development

For

Delray Beach Community  
Redevelopment Agency Office  
20 North Swinton Ave  
Delray Beach, Florida 33483

Song + Associates

1545 Centerpark Drive North  
West Palm Beach, Florida 33401

宋

# The Site

North

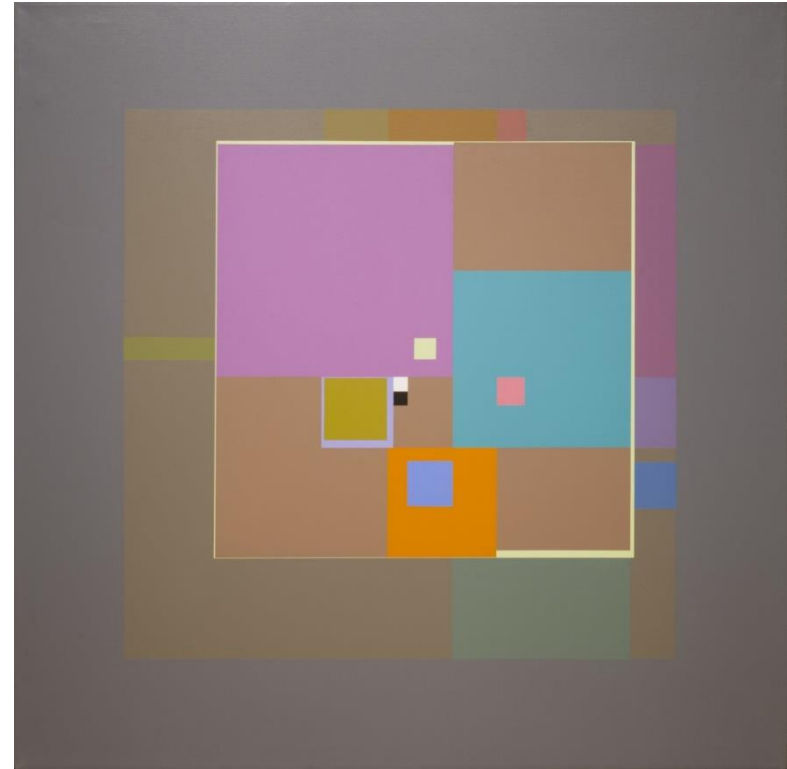
west

east

south

# 宋





“An image is where past and present collide in a flash that creates a constellation.”

Walter Benjamin

宋

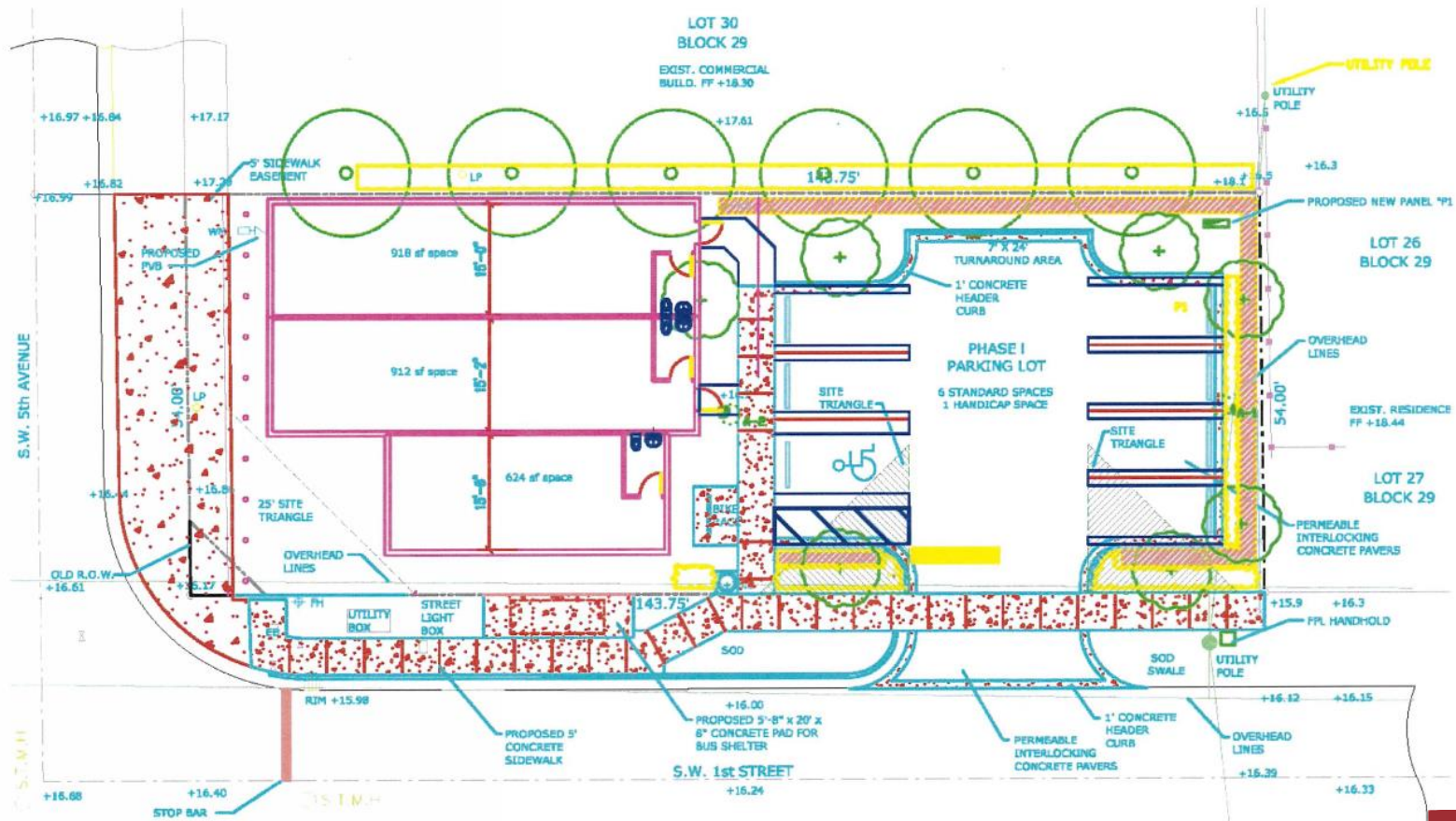


宋



宋

# Concept Plan DB CRA



宋

# Program

## PROGRAM OPTION 1

<b>First Level</b>	<b>2,262 sq. ft.</b>
<b>Second Level</b>	<b>2,690 sq. ft.</b>
<b><u>Total</u></b>	<b>4,952 sq. ft.</b>

## PROGRAM OPTION 2

<b>First Level</b>	<b>2,412 sq. ft.</b>
<b>Second Level</b>	<b>7,247 sq. ft.</b>
<b><u>Total</u></b>	<b>9,659 sq. ft.</b>

宋

# Option I Proposed Plans



OPTION I 1ST LEVEL FLOOR PLAN 01

OPTION I 2ND LEVEL FLOOR PLAN 02

**宋**  
Song + Associates

Architect • Planning • Interior Design  
12451 E. Colonial Blvd., Suite 1000  
West Palm Beach, Florida 33418  
Telephone: 561.835.5433  
Fax: 561.835.1932  
P.A. # 00011637 PR. # 0001005

**NEW ORLEANS**  
PROJECT 12

95 SW 5TH AVE.,  
DELRAY BEACH, FL  
33483

DATE: 09/14/2018  
S.A. PROJECT NO.: 150053  
OWNER: PROJECT: RUI CHAYER  
DRAWN BY: 4552/CD  
CHECKED BY: 4550

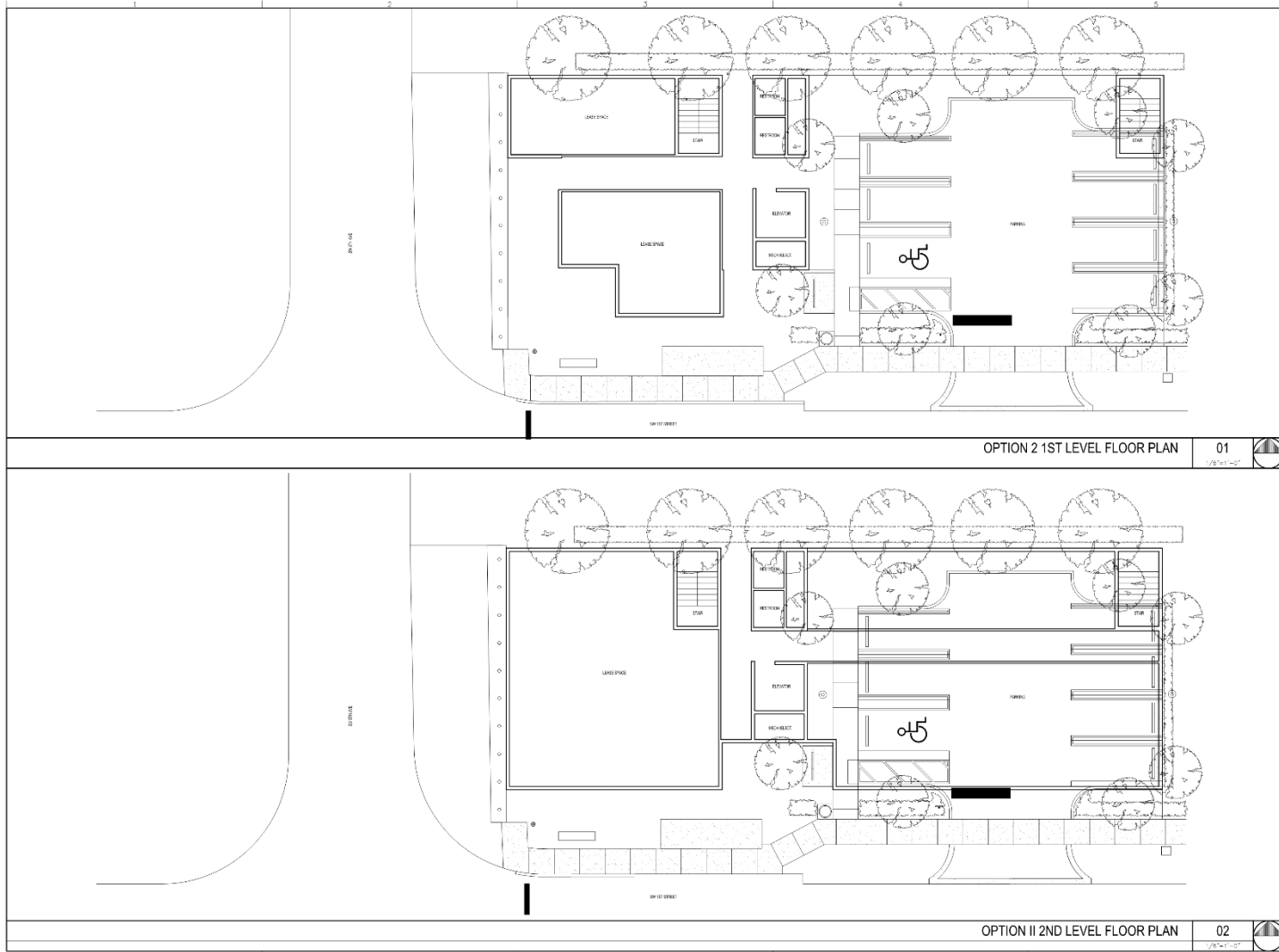
100% CONSTRUCTION DOCUMENTS

FLOOR PLANS  
Sheet # of A1.0





# Option II Proposed Plans



OPTION 2 1ST LEVEL FLOOR PLAN 01

OPTION II 2ND LEVEL FLOOR PLAN 02

**宋**  
Song + Associates

Architect • Planner • Interior Design  
1345 Central Exp. Blvd., Suite 2100  
Tallahassee, FL 32310  
Tel: 904.833.2423  
Fax: 904.833.1832  
AA - 000183 EB - 000000

PERMITS  
  
 Name: PERRY DOUGLAS  
 Title: PE  
 No.: 0007112

DELRAY BEACH CRA  
 DELRAY BEACH CRA  
 DEVELOPMENT

95 SW 5TH AVE.  
 DELRAY BEACH, FL  
 33445

100% CONSTRUCTION DOCUMENTS

FLOOR PLANS

Sheet # **A1.1**





**DELRAY BEACH** CRA  
COMMUNITY REDEVELOPMENT AGENCY

Thank You

Song + Associates

1545 Centerpark Drive North

West Palm Beach, Florida 33401

宋