



Tree Canopy Policy

Tree Preservation Ordinance

Tree Trust Fund



Tree Canopy Policy – Comprehensive Plan

- No specific city policy
- Current Comprehensive Plan “references” trees

CONSERVATION ELEMENT

Policy B-2.3 A **tree permit shall be necessary to remove or destroy any tree which has a diameter of four inches or greater.**

Policy E-1.1 By February 1st of each year, the Green Implementation Advancement Board (GIAB), shall review City operations and policies toward achieving Delray Beach’s green and sustainability goals and providing a report of recommendation to the City Commission regarding:

1. Ways to improve the environmental Sustainability of City programs, services, and equipment facilities.
2. Strategies for **improving environmental sustainability** of the community
3. Incentives for residents, businesses, and organizations to practice environmental conservation including recycling.
4. Proposed means to enhance water and energy conservation.
5. Ideas for **promotion of tree planting and xeriscaping.**
6. Best Practices for implementation in Delray Beach, including long-term strategies.
7. Proposed revisions to City Ordinances to address Green Technologies.
8. Strategies to address factors that affect energy conservation.

OPEN SPACE AND RECREATION ELEMENT

Policy B-1.2 The City shall **continue its on-going street beautification** efforts, including programs such as Adopt-A-Tree, landscaping upgrades as part of street construction projects, and an **emphasis on providing sufficient funds to maintain existing landscaping at a high level.**

Excerpts from Current Plan



Tree Canopy Policy – Comprehensive Plan

- Pending update addresses tree canopy and preservation
- completing Canopy Assessment

PROPOSED

OPEN SPACE, PARKS, AND RECREATION

Objective OPR 3.5 Tree Canopy

Preserve and enhance the tree canopy to mitigate the heat island effect and provide City-wide beautification.

Policy OPR 3.5.1

Conduct a formal study of the existing tree canopy and adopt strategies to protect and enhance the canopy. The study shall evaluate canopy coverage in both public rights-of way and on private properties to determine areas with inequitable coverage. The City shall monitor the tree canopy and produce a biennial report on the condition of the tree canopy. [Complete by 2025]

Policy OPR 3.5.2

Establish a goal for tree canopy coverage within parks and open space areas and actively increase tree plantings on an annual basis to mitigate the heat island effect and provide City-wide beautification.

Policy OPR 3.5.3

Design park and open spaces to preserve stands and clusters of mature trees, and require planting of appropriate and storm-resilient species.

Policy OPR 3.5.4

Prioritize expanding the tree canopy in accordance with the right tree right place standards within the public rights-of-way in neighborhoods that are largely developed with few opportunities to establish new parks and open space.

PROPOSED

CONSERVATION, SUSTAINABILITY & RESILIENCY ELEMENT

Policy CSR 8.5.1

The City shall conduct a tree inventory within three (3) years (including City rights-of-way and private lands) and **set an appropriate canopy goal** to maintain as a strategy to address heat islands and stormwater. The City shall also **develop a list of priority planting areas** in conjunction with the inventory. [Complete by 2022].

Policy CSR 8.5.2

Maintain the City's status designated as a Tree City USA. The City shall seek funds to develop and maintain an urban reforestation program, to expand green infrastructure, reduce the heat island effect and encourage local carbon sequestration and storage.

Policy CSR 8.5.3

Develop better data regarding current and projected heat island effects in the City. Encourage planting of native trees known to sequester carbon on available public and private lands and pursue programs and funding strategies designed to mitigate heat island effect and create carbon emission offsets through tree plantings and/or carbon mitigation banks.

HEALTHY COMMUNITY ELEMENT

Policy HCE 3.2.8

Encourage residents and property owners to plant and maintain trees on their own property to increase air quality.

Excerpts from Proposed Plan



Tree Canopy Assessment

What it is...

- Identification of land coverage
- A guide for tree investments
- quantification of value of trees

What it isn't...

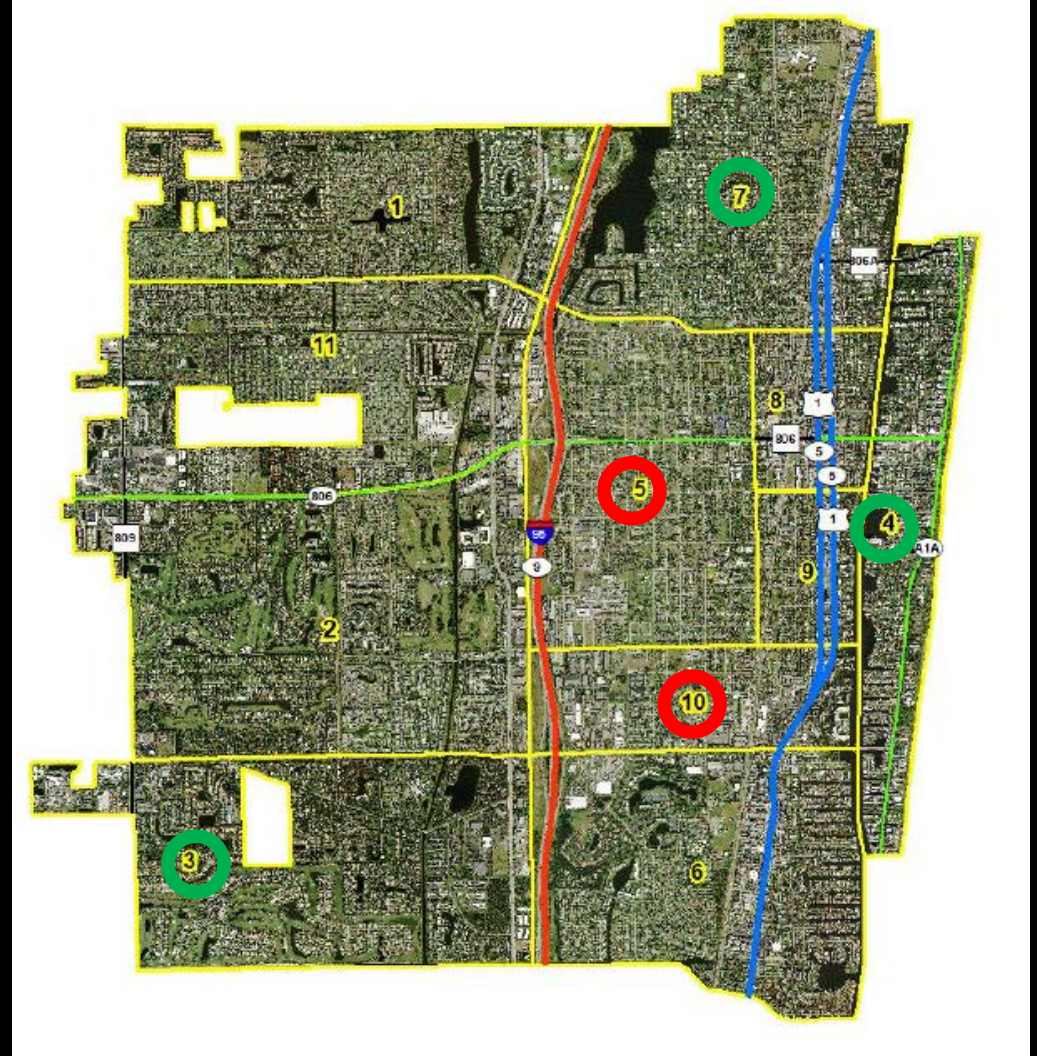
- A tree inventory – types or size
- A tool to set a canopy goal



Tree Canopy Assessment

- 11 assessment zones
- Citywide canopy is 23%
- **Lowest canopy percentage**
- **Highest canopy percentage**

To increase canopy by 1% requires
105 acres of trees, or 2,300 trees





Tree Canopy Assessment

Recommendations:

- Develop urban forestry “management” plan
- Arborist in departments
- Evaluate tree preservation ord.
- Support tree advocates
- Develop tree planting plan
- Incentivize private owners
- Organize tree events





Tree Preservation Ordinance

2017 Update Highlights:

- Applies to all trees >4" DBH
- Prioritizes approach:
 1. Preserve in place
 2. Relocate on-site
 3. Relocate off-site (tree <18" DBH)
 4. Mitigate (replacement or in lieu)





Tree Preservation Ordinance

2017 Update Highlights (continued):

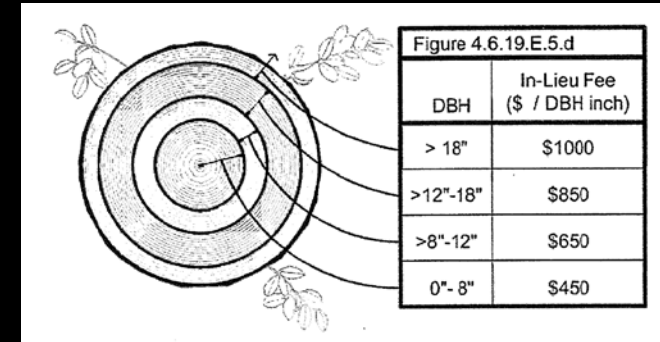
- Establishes “canopy replacement”
- Establishes escalation of penalties and mitigation costs
- Establishes “Exceptional Specimen Tree” at 18” DBH





Tree Preservation Ordinance

Options	Example 1 6" DBH Tree	Example 2 18" DBH Tree
Move tree onsite (no guaranteed survival)	\$1,000	\$4,500
Replace (1-year warranty)	\$2,500 2 – 3" caliper trees	\$7,500 3 – 6" caliper trees
Replace (1-year warranty)	\$2,500 1 – 6" caliper tree	\$10,000 1 – 18" caliper tree
In Lieu	\$2,700 (\$450x6")	\$11,300 (\$450x8") + (\$650x4") + (\$850x6") = \$3,600 + \$2,600 + \$5,100





Tree Preservation Ordinance

Recommended changes:

- Require \$ for watering trees relocated offsite
- Establish “multiplier” based on “value”
- Require \$ for CBD projects which occupy full site





Tree Trust Fund

2006 – Adopted

2017 – Adjusted

Appendix A – Definitions

“Tree Trust Fund”

An account established by the City's Finance Department into which in-lieu funds for owners and/or developers who are unable or unwilling to comply with the tree or palm planting/replacement requirements of the City's Land Development Regulations may deposit the in-lieu funds. **These funds shall be used to off-set the City's costs for future trees and palms and tree trimming for parks and streetscapes.**

Pending +\$139,800 – Midtown
Former Office Depot site - TBD

Date	Account		Note
Feb-17	\$ 64,209.95		Per Finance
Oct-17		\$ (20,000.00)	Beach Master Plan – Thrinax Palms (replace Silver Buttonwoods)
Oct-17	\$ 44,209.95		Subtotal
Apr-18		\$ 48,655.00	Schumacher Payment
Apr-18	\$ 92,864.95		Subtotal
Jul-18		\$ (78,700.00)	See Project List (pending)
Jul-18	\$ 14,164.95		Subtotal
Oct-18		\$ 124,200.00	BMW Payment
Oct-18	\$ 138,364.95		Subtotal



Tree Trust Fund

- Tree Board – Tree City USA
- Tree Board reviews projects
- **Remaining balance: \$138,365**

Projects Pending	Funds
Replacements of Trees destroyed by Hurricane Irma	\$50,300
Citywide Tree Canopy Assessment	\$3,000 Supplement
Tree for Tamarind Road - median	\$8,000
Replacement Trees for Atlantic Avenue & Linton Boulevard	\$7,400
Misc. Expenses-tree/stump removal, irrigation replacement and a tree watering contract	\$10,000
Total	\$78,700



Tree Trust Fund

Future Use of \$:

- Watering service
- Replace canopy in Sherwood Park along LWDD
- Add street trees on Pineapple Grove Way
(between NE 1st St and NE 2nd St)
- Replace City Hall Black Olives





Tree Canopy Policy

Tree Preservation Ordinance

Tree Trust Fund