

RELOCATION NOTES:
1. All canopy tree's designated as relocated on the plans, are to be root-pruned for a minimum of 3 months prior to the relocation process.
2. The root ball size for each tree will depend on the caliper of the individual tree to be relocated. The size of the root ball shall be adequate to support & sustain the viability of the individual tree.
3. All root cuts shall be "clean cuts", and the back fill material shall be well drained planting soils, or pre-approved equal. All road rock, and undesirable fill materials shall be removed from root-prune trench.
4. Temporary irrigation shall be provided to all root-pruned trees during the root-pruning process, and after the tree's have been relocated to their location for a minimum of 4 months, or as necessary to insure their survivability.
5. The canopies of all tree's shall be reduced by a minimum of 20% at time of root pruning.
6. All tree's shall be relocated with machinery (i.e., crane, front-end loader, tree spade, or equal) capable of handling the material without damaging any portion of the tree. The Landscape Architect will pre-approve all methods utilized for the relocation process.
7. All relocation work shall comply with the National Arborists Standards.

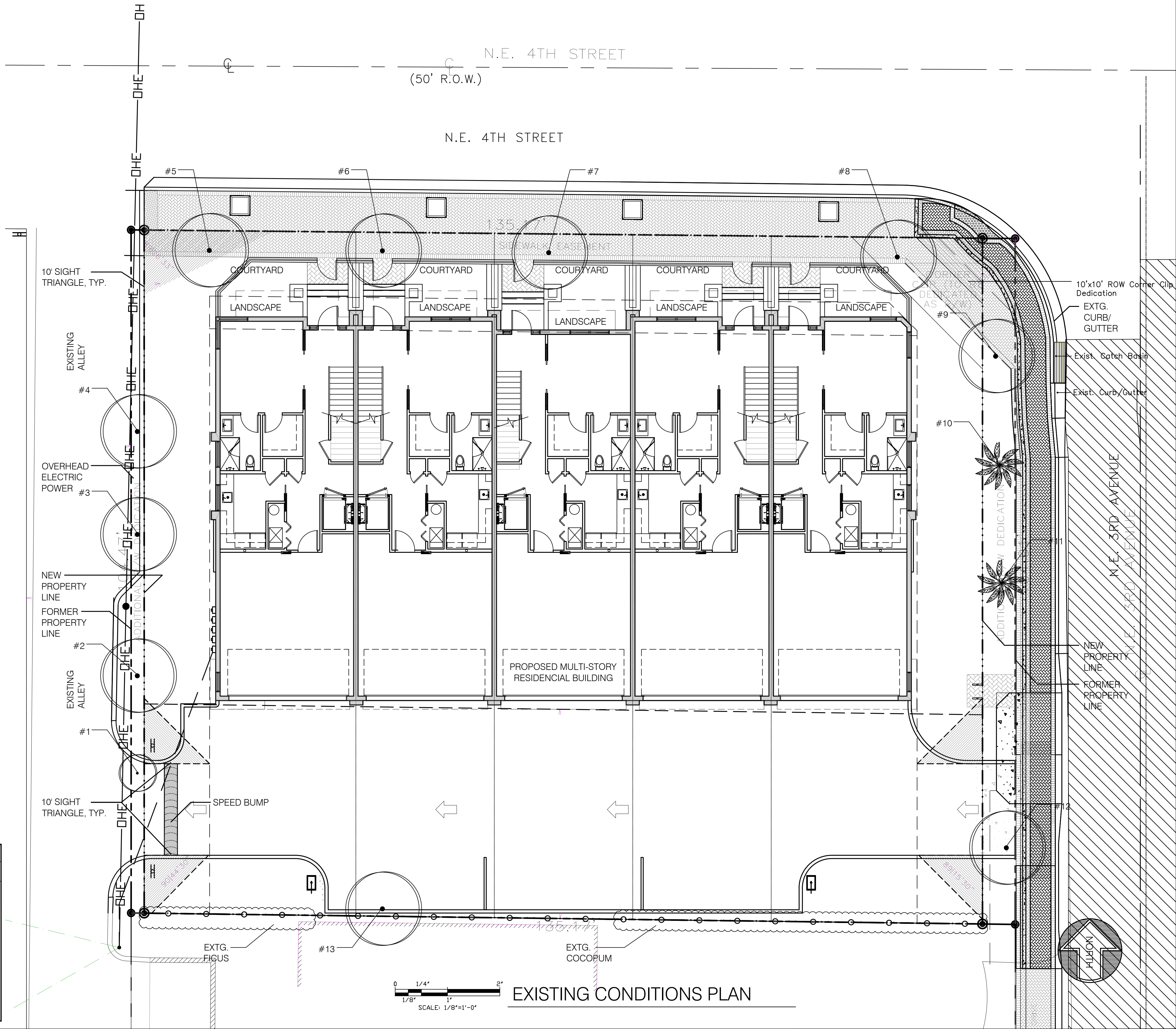
REMOVAL NOTES:
1. All tree's to be removed shall be completely removed from the site.
2. The root systems, of the removals, shall be removed in such a manner to facilitate the installation of new tree's, or palms. Root system removal shall be a minimum of 24" depth, and a 6 foot diameter around the trunk.
3. TREE REMOVAL PERMITS WILL BE REQUIRED BY THE GOVERNING MUNICIPALITY, AND IT SHALL BE THE CONTRACTORS RESPONSIBILITY TO OBTAIN ALL NECESSARY PERMITS.

ALL UNDERGROUND UTILITIES SHALL BE LOCATED PRIOR TO COMMENCING ANY WORK ON THE SITE, PER FLORIDA LAW.

New Materials To conform To City Of Delray Beach Requirements. All Tree Replacements Shall Also Replace Said Tree's Caliper Inches So As To Maintain Caliper Sizes. All Tree Replacements Shall Be Florida #1 Grade.

NOTE:
Remove All Exotic Nuisance Species, Including But Not Limited To (Fl. Holly, Australian Pine, Melaleuca, etc.) Per State and Local Zoning & Landscape Code(s).

TREE LIST			
TREE#	SPECIES	SIZE	DISPOSITION
1	Yucca elephantipes/ Spineless Yucca	16'	To Be Removed
2	Bursera Simaruba/ Gumbo Limbo Tree	16x16 Multi-Stem	To Be Removed
3	Conocarpus/ E. Serotenus/ Silver Buttonwood	12x12	To Be Removed
4	Bursera Simaruba/ Gumbo Limbo Tree	12x10	To Be Removed
5	Swietenia mahogany/ Mahogany Tree	30x30	To Be Removed
6	Delonix reggea/ Royal Poinciana Tree	25x30	To Be Removed
7	Swietenia mahogany/ Mahogany Tree	30x30	To Be Removed
8	Bucida buceras/ Shady Lady Black Olive	30x20	To Be Removed
9	Bucida buceras/ Shady Lady Black Olive	30x30	To Be Removed
10	Thrinax/ Thatch Palm	14, 16, 18	To Be Removed
11	Thrinax/ Thatch Palm	14, 16, 18	To Be Removed
12	Bucida buceras/ Shady Lady Black Olive	40x40	To Be Removed
13	Bucida buceras/ Shady Lady Black Olive	16' Multi-Stem	To Be Removed

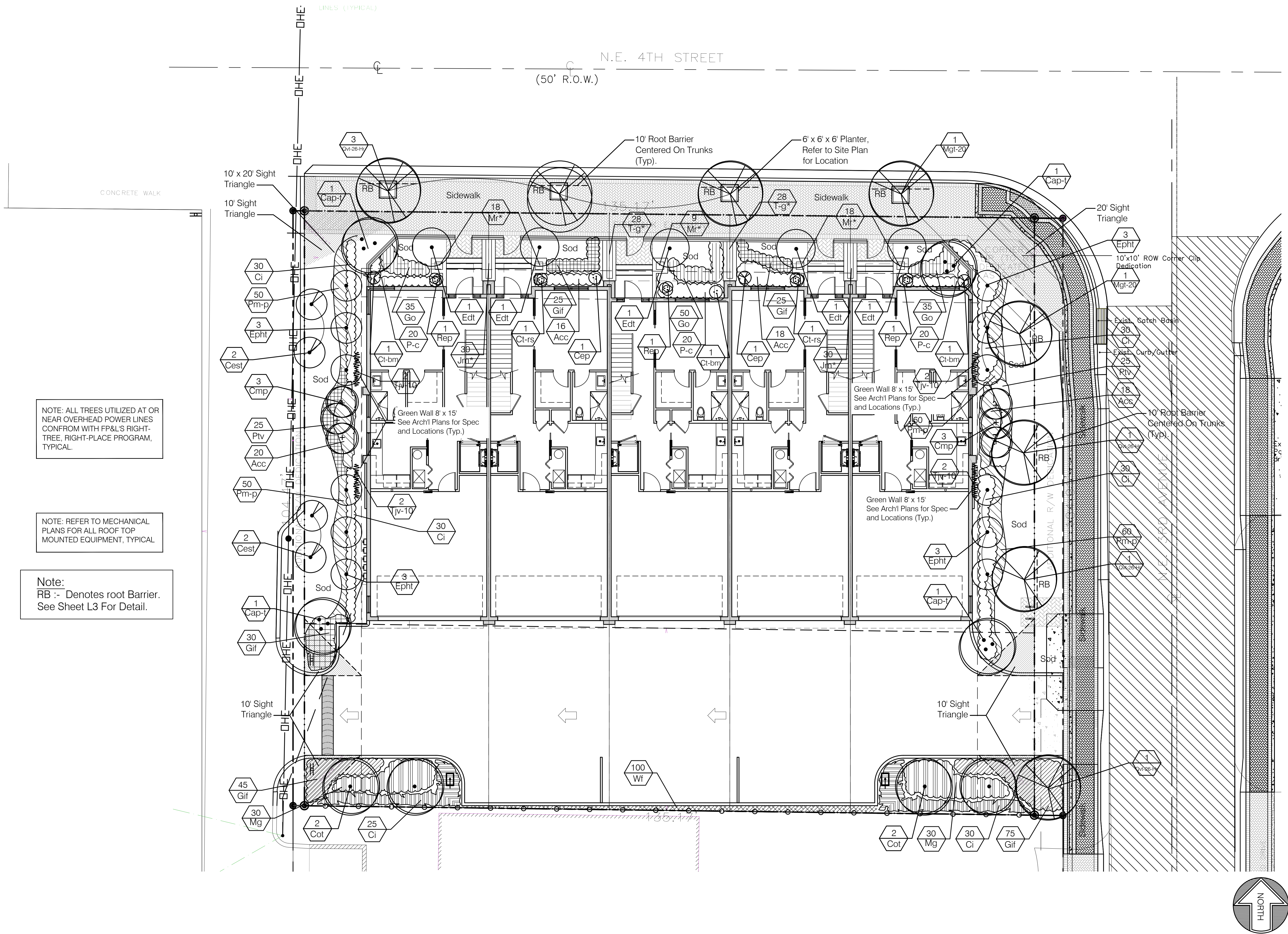


REVISIONS	BY
Revised 12/3/18 Per City Comments, Tree Mitigation	
Revised 2/14/19 Per Revised Site Plan	

DESIGNED BY:
CARTER & ASSOCIATES
LANDSCAPE ARCHITECTS INC.
74 N.E. 5th AVE. Delray Beach, FL 33483
LA. 831
561-272-9621

Landscape & Irrigation Plans for:
TOWNHOMES
AT 214 4TH
214 NE 4TH STREET
Delray Beach, Florida 33444

DRAWN SKP
CHECKED D.H.C.
DATE 2/7/18
SCALE 1/8"=1'-0"
JOB NO. 121517
SHEET L-1
OF 3 SHEETS



NOTE: ALL TREES UTILIZED AT OR NEAR OVERHEAD POWER LINES CONFORM WITH FP&L'S RIGHT-TREE, RIGHT-PLACE PROGRAM, TYPICAL.

NOTE: REFER TO MECHANICAL PLANS FOR ALL ROOF TOP MOUNTED EQUIPMENT, TYPICAL.

Note:
RB :- Denotes root Barrier.
See Sheet L3 For Detail.

REVISIONS	BY
Revised 12/3/18 Per City Comments, Tree Mitigation	
Revised 2/14/19 Per Revised Site Plan	

DESIGNED BY:
CARTER & ASSOCIATES
LANDSCAPE ARCHITECTS INC.
74 N.E. 5th AVE. Delray Beach, FL 33483
LA. 831

Landscape & Irrigation Plans for:
TOWNHOMES
AT 214 4TH
214 NE 4TH STREET
Delray Beach, Florida 33444

DRAWN	SKP
CHECKED	D.H.C.
DATE	2/7/18
SCALE	1/8" = 1'-0"
JOB NO.	121517
SHEET	

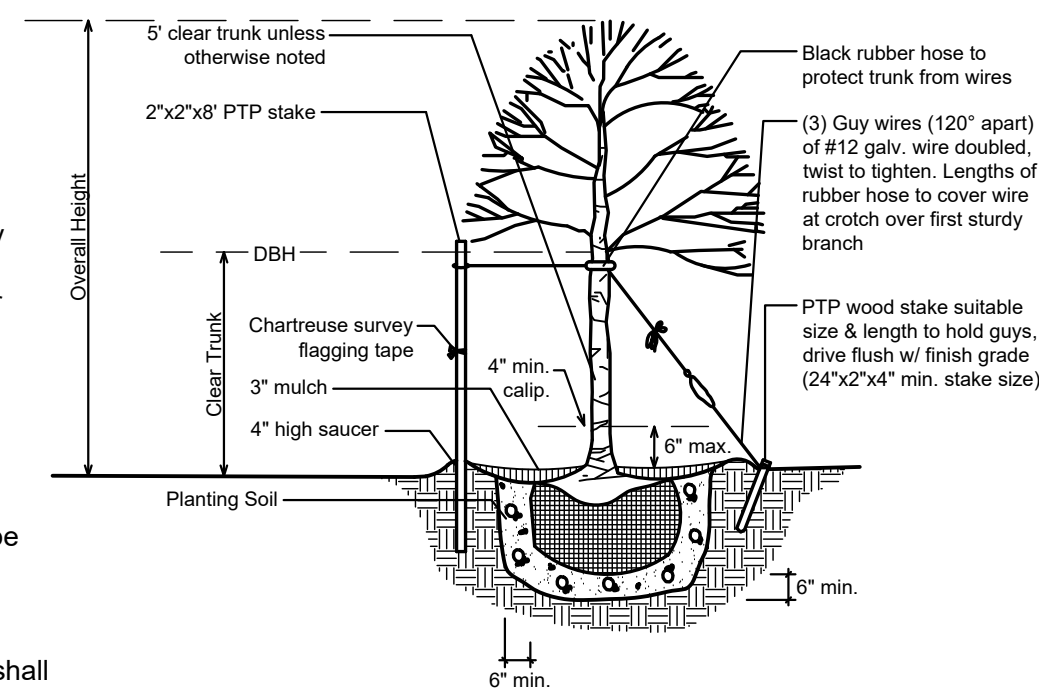
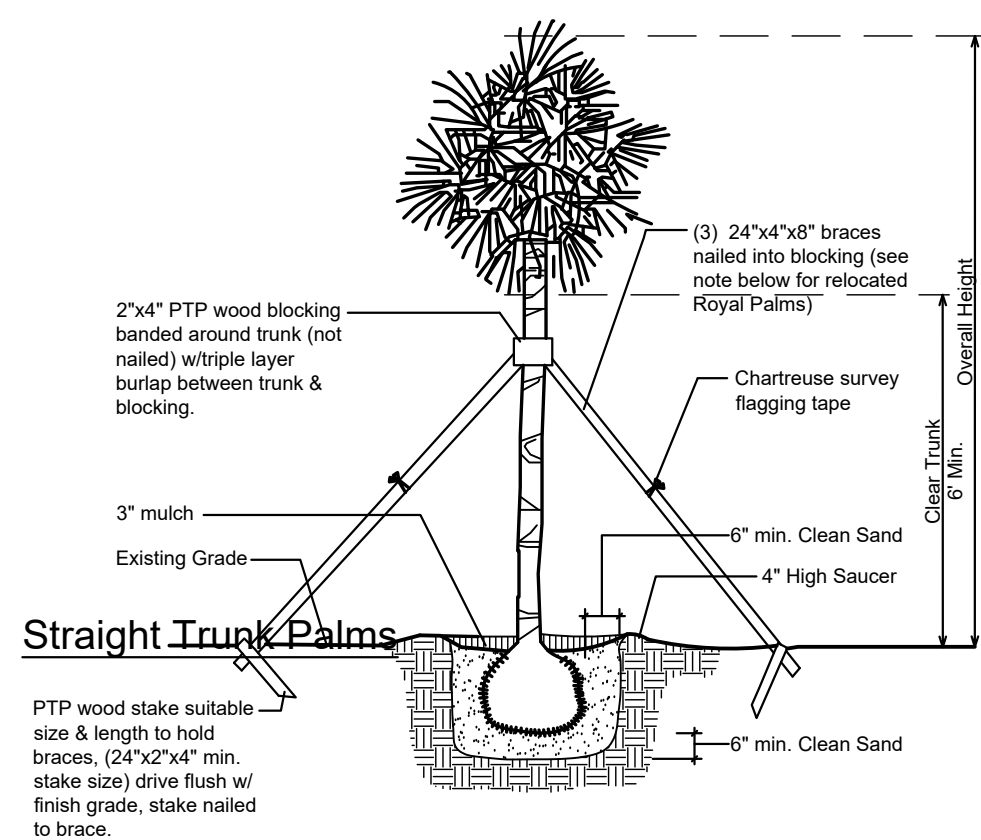
TREE & PALM SPECIFICATION MITIGATION SUMMARY (per LDR 4.6.19 [D])					
QTY & MATERIAL	SIZE	CONDITION	MITIGATION REQUIREMENTS		
1 Gumbo limbo tree	9.8"DBH (13x10ft.)	70	8	\$450.00	\$3,600.00
			15	\$650.00	\$9,750.00
1 Silver buttonwood tree	7"dbh (21x21ft.)	50	7	\$450.00	\$3,150.00
1 Gumbo limbo tree	4"		4	\$450.00	\$1,800.00
1 Silver buttonwood tree	7"dbh (21x21ft.)	50	7	\$450.00	\$3,150.00
1 Mahogany tree	13"DBH	60	8	\$450.00	\$3,600.00
			5	\$650.00	\$3,250.00
1 Royal poinciana tree	12.8"DBH	70	8	\$450.00	\$3,600.00
			4.5	\$650.00	\$2,600.00
1 Mahogany tree	16	70	8	\$450.00	\$3,600.00
			8	\$650.00	\$5,200.00
1 Black olive tree	12"DBH	50	8	\$450.00	\$3,600.00
			4	\$650.00	\$2,600.00
1 Black olive tree	16"DBH	70	8	\$450.00	\$3,600.00
			10	\$650.00	\$6,500.00
3 Thatch palms	9-11ft. oa.	80			
1 Black olive tree	18"DBH	70	8	\$450.00	\$3,600.00
			10	\$650.00	\$6,500.00
				Total	\$60,925.00
Total Caliper Inches		97" DBH			
<u>Code Tree Requirements</u>	<u>Rowd</u>	<u>Provided</u>	<u>Above Code Rqmnts.</u>		
Interior shade	3	4	1		
Perimeter shade	15.4	35	20) (CODE TABULATION DOESN'T ACCOUNT for building facade requirements)		
MITIGATION REQUIREMENTS			<u>EXCESS CALIPER</u>		
ADDITIONAL CALIPER PROVIDED ON PLAN			6 @ 4" CALIPER = 24"		
4 Q-VT-26 @ 8" CALIPER					

LANDSCAPE CALCULATIONS		
(MULTI-FAMILY, COMMERCIAL, INDUSTRIAL)		
A.	TOTAL LOT AREA	13.16 Sq.ft.
B.	STRUCTURES, PARKING, WALKWAYS, DRIVES, ETC...	9.684 Sq.ft.
C.	TOTAL PERVIOUS LOT AREA	3.732 Sq.ft.
D.	AREA OF SHRUBS & GROUND COVERS REQUIRED (X 3.10)	1,120 Sq.ft.
E.	AREA OF SHRUBS & GROUND COVERS PROVIDED	3.732 Sq.ft.
F.	NATIVE VEGETATION REQUIRED (D X 25)	933 Sq.ft.
G.	NATIVE VEGETATION PROVIDED	1,775 Sq.ft.
H.	TOTAL PAVED VEHICULAR USE AREA	3,496 Sq.ft.
I.	TOTAL INTERIOR LANDSCAPE AREA REQUIRED (H X 10)	350 Sq.ft.
J.	TOTAL INTERIOR LANDSCAPE AREA PROVIDED	400 Sq.ft.
K.	TOTAL INTERIOR SHADE TREES REQUIRED (I / 125 SQ.FT.)	3 Trees
L.	TOTAL INTERIOR SHADE TREES PROVIDED	4 Trees
M.	TOTAL LINEAR FEET SURROUNDING PARKING, OR VEHICULAR USE AREA	104 Lin.Ft.
N.	TOTAL NUMBER OF PERIMETER TREES REQUIRED (M / 30)	15.4 Trees
O.	TOTAL NUMBER OF PERIMETER TREES PROVIDED	35 Trees
P.	TOTAL NUMBER OF EXTG. TREES TO BE PRESERVED ON SITE	0 Trees
Q.	TOTAL NUMBER OF NATIVE TREES REQUIRED ([K + N] X 50)	8 Trees
R.	TOTAL NUMBER OF NATIVE TREES PROVIDED	20 Trees
S.	TOTAL NUMBER OF TREES ON PLAN PROVIDED	43 Trees

<u>KERISCAPE CALCULATIONS</u>		
Required shrubs & ground covers (30% of required interior & perimeter greenspace)	1,469.20	Sq.ft.
Shrubs & ground cover provided	1,775	Sq.ft.
Required native plant materials (25% of required shrubs & ground covers)	367	Sq.ft.
Native plant materials provided	787	Sq.ft.
Number of native trees required (50% of required trees)	8	Trees
Native trees provided	20	Trees

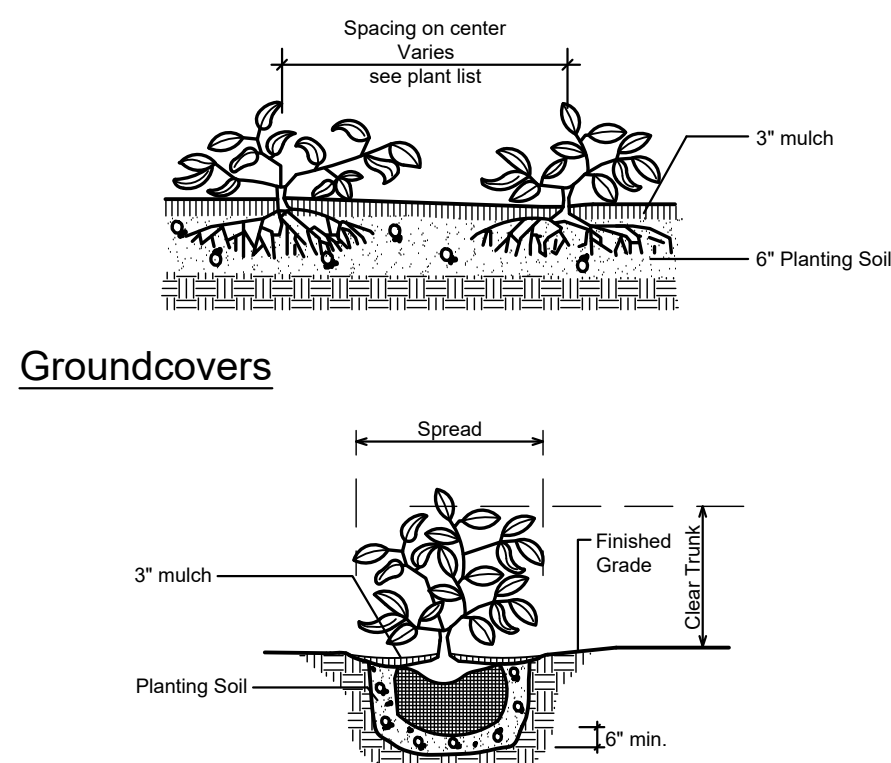
MATERIAL SCHEDULE			
Qty.	Key	Botanical / common name	Size
6	Qvt-26+H*	Quercus agrifolia/ High Rise Live oak tree	26x12, 12'ct. 8" calip. mtchg. specimens
2	Mgt-20*	Magnolia grandiflora / S. Magnolia tree	20x10", 10'ct. mtchg. specimens
12	Eph†	Ilex spp / east palatista holly tree	16x7' full to base, mtchg.
5	Ed†	Elaeocarpus decapinnus/Japanese blueberry tree	14x6", 7'ct. conical-shaped, mtchg.
4	Co†	Chrysophyllum oliviforme/ Satin leaf	16x7, 8'ct. mtchg.
4	Cap†	Carpentaria acuminensis/Carpenters Palm	18-20"x20, triple. hvy. calip. mtchg.
2	Ch†	Chlamys erumpens/Bamboo palm	6x3' multi stem mtchg.
3	Rep	Raphis excolata/ Lady palm	6"x4' hvy. mltr. mtchg.
6	Cmp	Caryota mitis/ Fishtail Palm	22-24"x4, 3-5 stems max. hvy. calip.
4	Cest*	Conocarpus E. Sericeus / Silver buttonwood tree	10-12 x 5'
8	Tjv-10	Trachelospermum jasminoides/ Confederate jasmine vine	8x4' trellis
220	Pm-p	Podocarpus macrophyllus prinigles/ Dwarf	12" -15"3g @15'oc.
175	C†	Chrysobalanus icagi/ Cocoplum	24"x24" @2'oc.
60	Mu†	Muhly Grass	18"x18" @2'oc
72	Acc	Alcaosia calif. compacta/ Dwf. Aloosia	24"x30" @30'oc.
3	Cl-bm	Chlorodea terminalis/ Black magic it plant	4-5' hvy. multi. mtchg.
2	Cv†	Cordyline fruticosa/ red tiester	4-5' hvy. multi. mtchg.
60	P-c	Phyllodendron congo/ Congo	18"x30' mtchg.
120	Go	Spathoglottis plicata/ Ground orchid	15"2g @18'oc.
200	Gi†	Ficus microcarpa/ Green island ficus	18"3g @15' oc.
50	Ptv	Pittosporum tobira Variegata/ Variegated pitt	15"x30' @18'oc
100	W†	Polypodium scop./ Wart fern	10"x13" @1' oc.
12	Tt	Tibouchina / Purple Gloe groundcover	10" lg. (25 per planter)
120	Jm†	Jasmine minima/ Jasmine	10" lg. (30 per planter)
40	Mr	Moss Rose	6" lg. (9 per planter um)

Planting soils & mulch, see specs. & details
Sod, Empire Zoysia

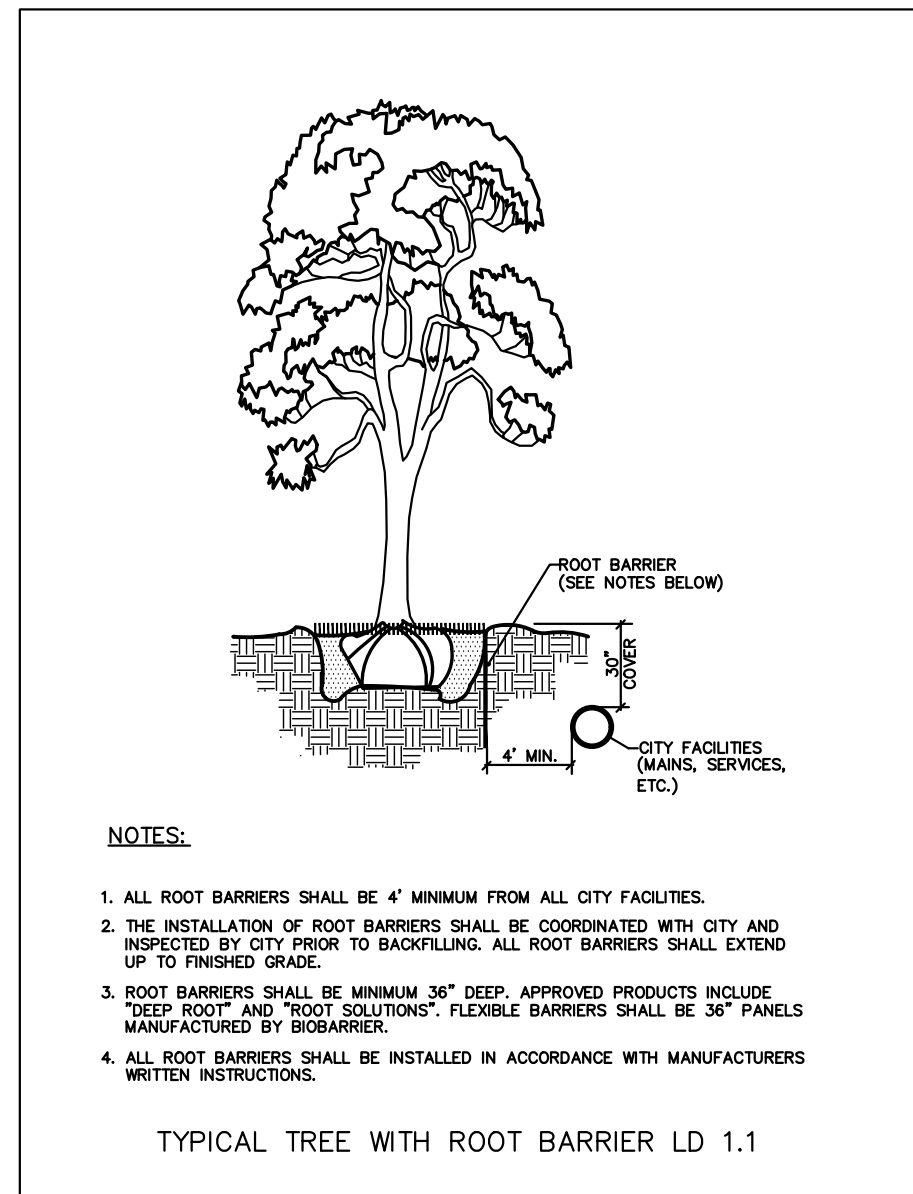


NOTE: Stake all trees up to 2' cal. @ 2 per tree. Guy all trees larger than 2' cal.
Pull burlap from top of root ball. Remove all non-biodegradable materials
such as wire, twine, etc. on rootball

Trees

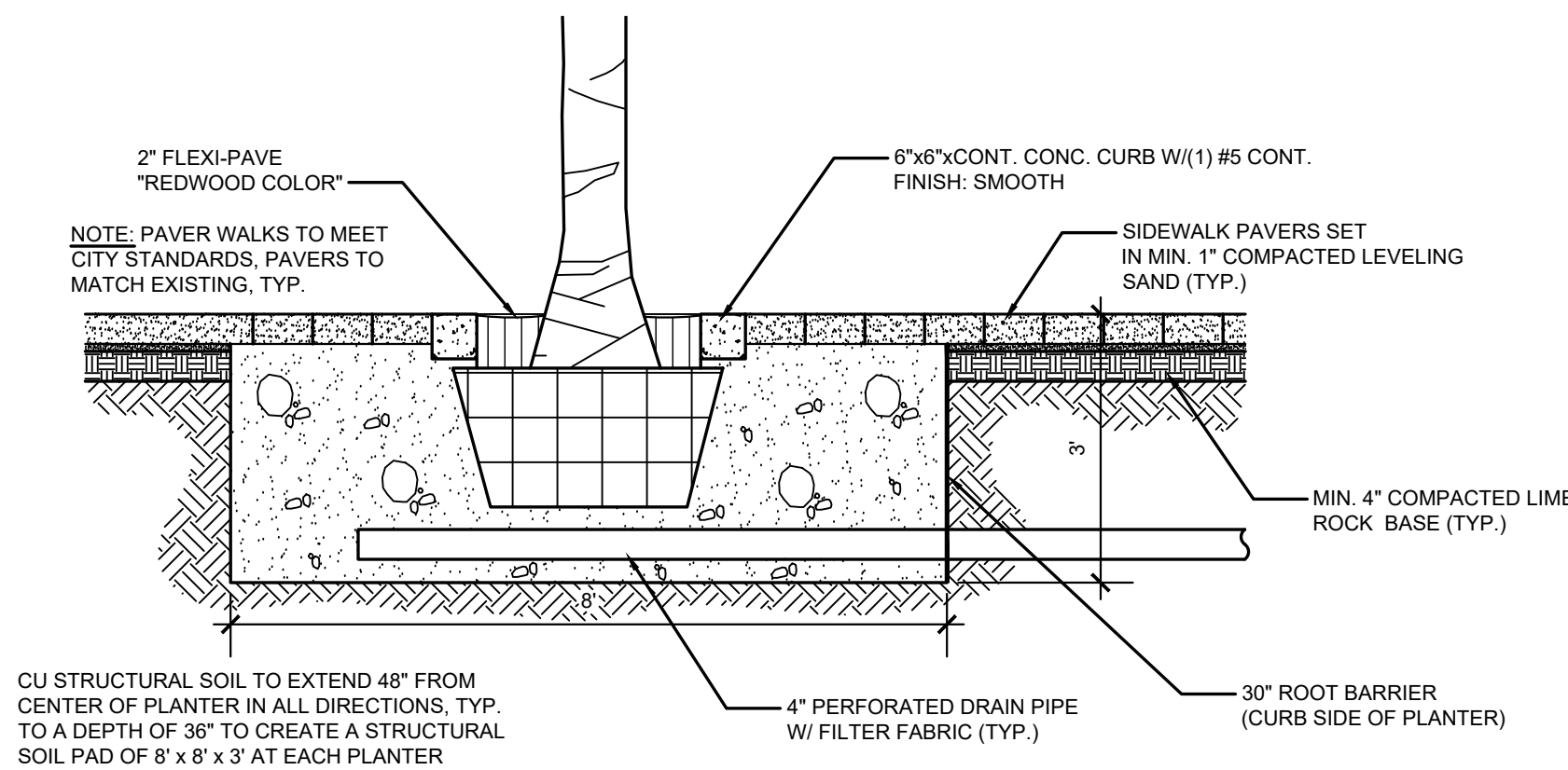


Shrubs



Any Trees or shrubs placed within water, sewer or drainage easements shall conform to Details L.D. 1.1 requirements.

Automatic Irrigation system to provide 100% irrigation coverage, with 100% overlap minimum, with a programmable controller and rain sensor. Shrub & Turf zones are to be separated.
THERE SHALL BE NO TREES OR SHRUBS PLACED WITHIN WATER, SEWER OR DRAINAGE EASEMENTS



Structural Soil Detail at Planter

NOTES:
1. All Trees, Shrubs & Plants used on this site shall conform to the requirements of "Low watering needs" materials as specified in the South Florida Water Management District's "Waterwise" publication.

2. All proposed utility structures shall be planted on three sides with "Waterwise" Cocoplum hedges
3. All landscape areas containing trees and vegetation shall be first filled with city inspected clean fill soil.

4. Clean fill. All planted areas on the site shall first be filled with clean fill to a depth of one foot from the surface along the entire length of the green space, island, or landscape buffer.

5. Inspection. The city shall inspect all clean fill, irrigation systems and landscape improvements prior to installation.

NOTE: All Landscape With-in Sight Triangles Shall Provide Unobstructed Cross-visibility At A Horizontal Level Between 30 Inches And 8 Feet, Including Trunks From Pavement.

REVISIONS	BY
Revised 12/3/18 Per City Comments, Tree Mitigation	
Revised 2/14/19 Per Revised Site Plan	

DESIGNED BY:
CARTER & ASSOCIATES
LANDSCAPE ARCHITECTS INC.
74 N.E. 5th AVE. Delray Beach, FL 33483
561-272-9621
LA: 831

Landscape & Irrigation Plans for:
**TOWNHOMES
AT 214 4TH**
214 NE 4TH STREET
Delray Beach, Florida 33444

DRAWN
SKP
CHECKED
D.H.C.
DATE
2/7/18
SCALE
1/8" = 1'-0"
JOB NO.
121517
SHEET
L-3
OF 3 SHEETS