



ARCHITECTURAL STANDARDS - PER LDR 4.4.13.F(1-10)

LDR 4.4.13.F.2: FACADE COMPOSITION
REFER TO 'FACADE ARTICULATION PROPORTIONS & TRI-PARTITE COMPOSITION DIAGRAMS' ON SHEETS A7 & A8 FOR COMPLIANCE OF FACADE DESIGN/COMPOSITION REQUIREMENTS. ALL FACADES UTILIZE CONSISTENT BUILDING MATERIALS, ARTICULATION AND FENESTRATION PATTERNS TO ESTABLISH AN ATTRACTIVE FACADE SCREENING. LOCATION OF COURTYARDS, DOORS, WINDOWS, STONE VENEER PLASTERS, PLANTERS, STUCCO BANDS AND OVERHANGS PROVIDE ARTICULATION TO AVOID ANY LARGE BLANK WALLS. THE CHANGES IN HEIGHTS AT THE ROOF LINES, THE PROTRUDING OVERHANGS, THE STONE VENEER AND THE HORIZONTAL LINED PATTERN WITH WARM BROWN COLOR OF THE FIBER CEMENT WALL CLADDING MATERIAL ON THE SIDES, FRONT AND BACK FACADES, PROVIDE THE DESIRED FACADE ARTICULATION

LDR 4.4.13.F.3: BUILDING ARCHITECTURAL STYLE:
MASONRY MODERN

LDR 4.4.13.F.4: WALLS:
THE PROPOSED BUILDING FACADE WALLS INCLUDE MATERIALS APPROPRIATE TO THE ARCHITECTURAL STYLE AND ARE CONSISTENT ON ALL SIDES OF THE BUILDING. BLANK WALLS ARE NOT PRESENT, AS REQUIRED SINCE SETBACKS, PROJECTIONS, INDENTATIONS, GREEN WALLS AND CHANGES IN MATERIALS ARE USED THROUGHOUT TO BREAK UP ALL FACADES.

LDR 4.4.13.F.5: OPENINGS:
GLASS DOORS AND WINDOWS ARE PROVIDED ON ALL FACADES FACING THE STREETS AND OVERHEAD GARAGE DOORS ARE PLACED FACING THE REAR OF THE BUILDING, NOT FACING A RESIDENTIALLY ZONED PROPERTY.

LDR 4.4.13.F.6: ROOFS:
THE PROPOSED BUILDING'S ROOF TYPE AND ROOFING MATERIALS ARE CONSISTENT WITH ARCHITECTURAL STYLE OF THE BUILDING. FLAT ROOFS AND ROOF MOUNTED EQUIPMENT ARE SCREENED FROM ADJACENT PROPERTIES AND STREETS WITH MASONRY MODERN TYPE PARAPETS.

LDR 4.4.13.F.7: ELEMENTS:
THE PROPOSED BUILDING FACADE INCLUDES COURTYARDS, PLANTERS, STOOPS, STEPS, RAILINGS AND PROTRUDING OVERHANGS ON THE GROUND FLOOR. ONE BASE COLOR AND 2 TRIM COLORS ARE USED. MECHANICAL EQUIPMENT HAVE BEEN DESIGNED TO BE INTEGRAL PARTS OF THE OVERALL BUILDING DESIGN, PROVIDING A GRACEFUL SILHOUETTE, AS REQUIRED.

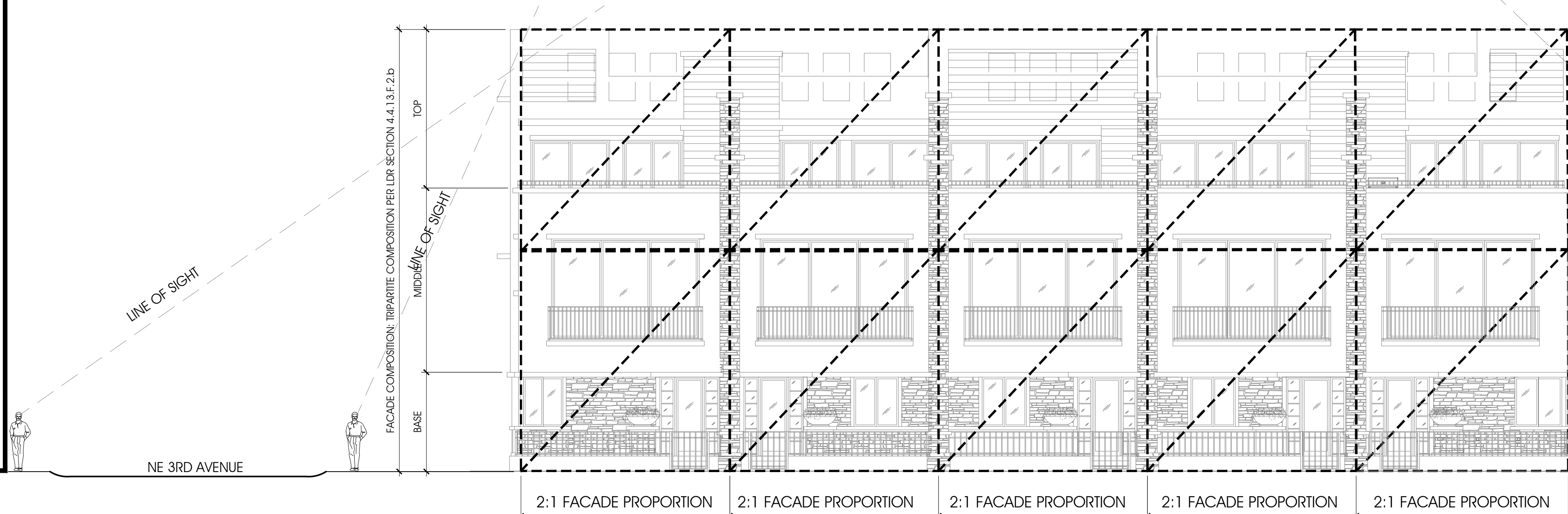
LDR 4.4.13.F.8: PARKING GARAGES: NOT APPLICABLE

LDR 4.4.13.F.9: REDUCTION OF URBAN HEAT ISLANDS:
ROOF MATERIAL IS ENERGY STAR ROOF-COMPLIANT, HIGH REFLECTANCE AND HIGH EMISSIVITY ROOFING (INITIAL REFLECTANCE OF AT LEAST 0.65 AND 3-YEAR AGED REFLECTANCE OF AT LEAST 0.5 WHEN TESTED IN ACCORDANCE WITH ASTM E903 AND EMISSIVITY OF AT LEAST 0.9 WHEN TESTED IN ACCORDANCE WITH ASTM 4080)

LDR 4.4.13.F.10: GREEN BUILDING PRACTICES:
SEE SHEET A3 FOR LIST OF SUSTAINABLE DESIGN FEATURES INCLUDED IN PROJECT

PAINT COLOR LEGEND	
C-1	Color 1/ Base (Stucco) Benjamin Moore OC-66 Snow White
C-2	Color 2/ Accent (Trim) Benjamin Moore OC-66 Snow White
C-3	Color 3/ Accent (Railing) Benjamin Moore 2125-30 Gray Shower Powder coated

Front Elevation (North)
1/4" SC



Front Elevation - Facade Articulation Proportions & Tri-partite Composition Diagram
1/8" SC

FINISH NOTES

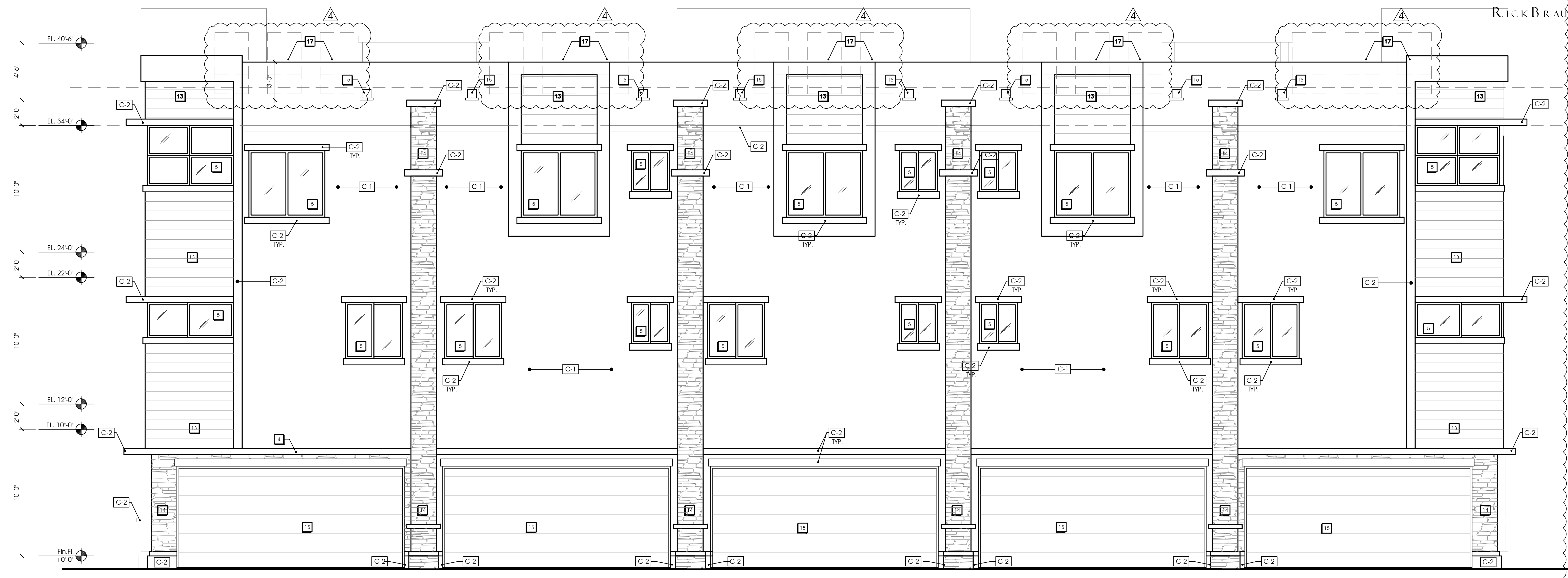
- (2) coat 5/8" thick stucco (sand fin.)
- 6" high eyebrow with stucco finish
- Standing seam metal roof (Galvalume Finish)
- 6" H x 4" raised stucco band (hard coat over high density) "Stone-Cast" molding
- Hurricane impact rated window/door system with mill finish and tinted (grey) glass
- Decorative aluminum rail/safeguard 42" A.F.F. w type 1 handrail per 1012 / 1618 FBC
- 12" H x 2" raised stucco HDR
- Living Green wall cable trellis system by Jakob or equal
- Decorative aluminum fence
- 42" wide x 48" high Decorative Alum. gate with self latching/locking per CH. 45 FBC
- 4"H x 2" raised stucco sill or band
- 3" x 3" painted metal drip over 1" x 3" P.T. drip on 2" x 8" painted fascia
- Nichiha Vintage Wood fiber cement wall cladding, AWP 3030 Color: Cedar
- Culture Stone veneer on CMU, Pro-Fit ledgerstone by Boral, color Platinum
- 18" x 8" impact-rated metal garage door
- 8" x 8" Scupper
- Rooftop equipment (air conditioning)

Proposed Front Elevation
1/4" Sc

Townhomes
at 214 4th
214 NE 4th Street
Delray Beach,
Florida
RBA-PN.10316.01

Issued
© 2/8/18:SPRAB Submittal
© 9/24/18:SPRAB Comm.
© 11/15/18:SPRAB Comm.
● 2/19/19:SPRAB Comm.

© PAUL RICHARD BRAUTIGAN, ARCHITECT A00017073

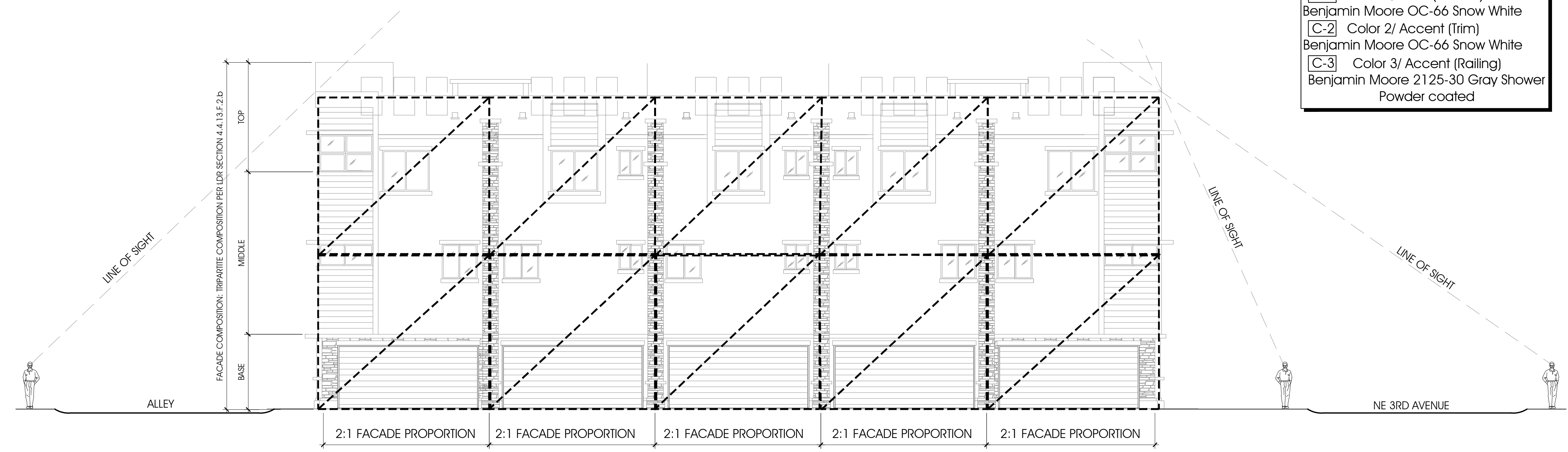


Rear Elevation (South)
1/4" SC

PAINT COLOR LEGEND	
[C-1]	Color 1/ Base (Stucco) Benjamin Moore OC-66 Snow White
[C-2]	Color 2/ Accent (Trim) Benjamin Moore OC-66 Snow White
[C-3]	Color 3/ Accent (Railing) Benjamin Moore 2125-30 Gray Shower Powder coated

FINISH NOTES

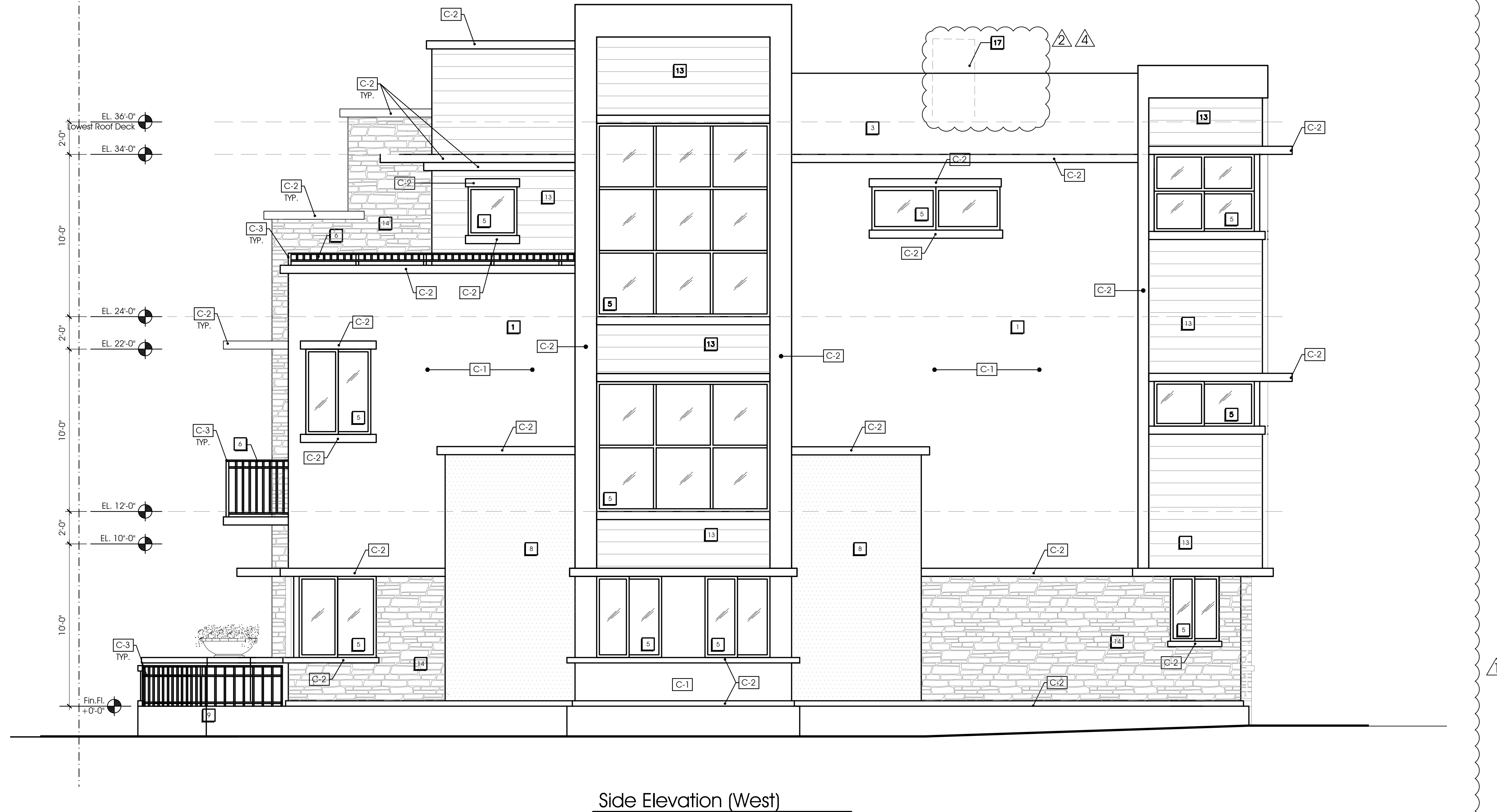
- (2) coat 5/8" thick stucco (sand fin.)
- 6" high eyebrow with stucco finish
- Standing seam metal roof (Galvalume Finish)
- 6" H x 4" raised stucco band (hard coat over high density) "Stone-Cast" molding
- Hurricane impact rated window/door system with mill finish and tinted (grey) glass
- Decorative aluminum rail /safeguard 42" A.F.F. w type 1 handrail per 1012 / 1618 FBC
- 12" H x 2" raised stucco HDR
- Living Green wall cable trellis system by Jakob or equal
- Decorative aluminum fence
- 42" wide x 48" high Decorative Alum. gate with self latching/locking per CH. 45 FBC
- 4"H x 2" raised stucco sill or band
- 3" x 3" painted metal drip over 1" x 3" P.T. drip on 2" x 8" painted fascia
- Nichiha Vintage Wood fiber cement wall cladding, AWP 3030 Color: Cedar
- Culture Stone veneer on CMU, Pro-Fit ledgerstone by Boral, color Platinum
- 18' x 8' impact-rated metal garage door
- 8" x 8" Scupper
- Rooftop equipment (air conditioning)



Rear Elevation - Facade Articulation Proportions & Tri-partite Composition Diagram
1/8" SC

Proposed Rear Elevation
1/4" Sc

ALL DESIGNS, CONCEPTS AND IDEAS CONTAINED AND REPRESENTED HEREIN ARE THE PROPERTY OF RICK BRAUTIGAN ARCHITECTURE, INC. AND MAY NOT BE ALTERED, CHANGED, MODIFIED OR COPIED, WITHOUT THE PERMISSION OF RICK BRAUTIGAN ARCHITECTURE, INC. EXPRESSED IN WRITING.
1. DRAWINGS ARE NOT TO BE SCALED. WRITTEN DIMENSIONS HAVE PRECEDENCE OVER ALL SCALED DIMENSIONS. 2. CONTRACTOR TO VERIFY ALL DIMENSIONS AND ADVISE ARCHITECT OF ANY DISCREPANCIES. CONSTRUCTION SHALL NOT PROCEED UNTIL SAID DISCREPANCIES HAVE BEEN RESOLVED.
3. NO MATERIALS OR SYSTEMS ARE TO BE FABRICATED UNTIL: A) ALL DIMENSIONS HAVE BEEN VERIFIED BY CONTRACTOR B) SHOP DRAWINGS HAVE BEEN REVIEWED AND ACCEPTED BY THE ARCHITECT



- FINISH NOTES**
- (2) coat $\frac{5}{8}$ " thick stucco (sand fin.)
 - 6" high eyebrow with stucco finish
 - Standing seam metal roof (Galvalume Finish)
 - 6" H x 4" raised stucco band (hard coat over high density) "Stone-Cast" molding
 - Hurricane impact rated window/door system with mill finish and tinted (grey) glass
 - Decorative aluminum rail /safeguard 42" A.F.F. w type 1 handrail per 1012 / 1618 FBC
 - 12" H x 2" raised stucco HDR
 - Living Green wall cable trellis system by Jakob or equal
 - Decorative aluminum fence
 - 42" wide x 48" high Decorative Alum. gate with self latching/locking per CH. 45 FBC
 - 4" H x 2" raised stucco sill or band
 - 3" x 3" painted metal drip over 1" x 3" P.T. drip on 2" x 8" painted fascia
 - Nichiha Vintage Wood fiber cement wall cladding, AWP 3030 Color: Cedar
 - Culture Stone veneer on CMU, Pro-Fit ledgestone by Boral, color Platinum
 - 18' x 8' impact-rated metal garage door
 - 8" x 8" Scupper
 - Rooftop equipment (air conditioning)

PAINT COLOR LEGEND	
C-1	Color 1/ Base (Stucco)
Benjamin Moore OC-66 Snow White	
C-2	Color 2/ Accent (Trim)
Benjamin Moore OC-66 Snow White	
C-3	Color 3/ Accent (Railing)
Benjamin Moore 2125-30 Gray Shower Powder coated	



FINISH NOTES

- (2) coat $\frac{5}{8}$ " thick stucco (sand fin.)
- 6" high eyebrow with stucco finish
- Standing seam metal roof (Galvalume Finish)
- 6" H x 4" raised stucco band (hard coat over high density) "Stone-Cast" molding
- Hurricane impact rated window/door system with mill finish and tinted (grey) glass
- Decorative aluminum rail/safeguard 42" A.F.F. w type 1 handrail per 1012 / 1618 FBC
- 12" H x 2" raised stucco HDR
- Living Green wall cable trellis system by Jakob or equal
- Decorative aluminum fence
- 42" wide x 48" high Decorative Alum. gate with self latching/locking per CH. 45 FBC
- 4"H x 2" raised stucco sill or band
- 3" x 3" painted metal drip over 1" x 3" P.T. drip on 2" x 8" painted fascia
- Nichiha Vintage Wood fiber cement wall cladding. AWP 3030 Color: Cedar
- Culture Stone veneer on CMU, Pro-Fit ledgerstone by Boral, color Platinum
- 18" x 8" impact-rated metal garage door
- 8" x 8" Scupper
- Rooftop equipment (air conditioning)

PAINT COLOR LEGEND

- C-1 Color 1/ Base (Stucco)
Benjamin Moore OC-66 Snow White
C-2 Color 2/ Accent (Trim)
Benjamin Moore OC-66 Snow White
C-3 Color 3/ Accent (Railing)
Benjamin Moore 2125-30 Gray Shower
Powder coated

Proposed East Side Elevation

1/4" Sc