

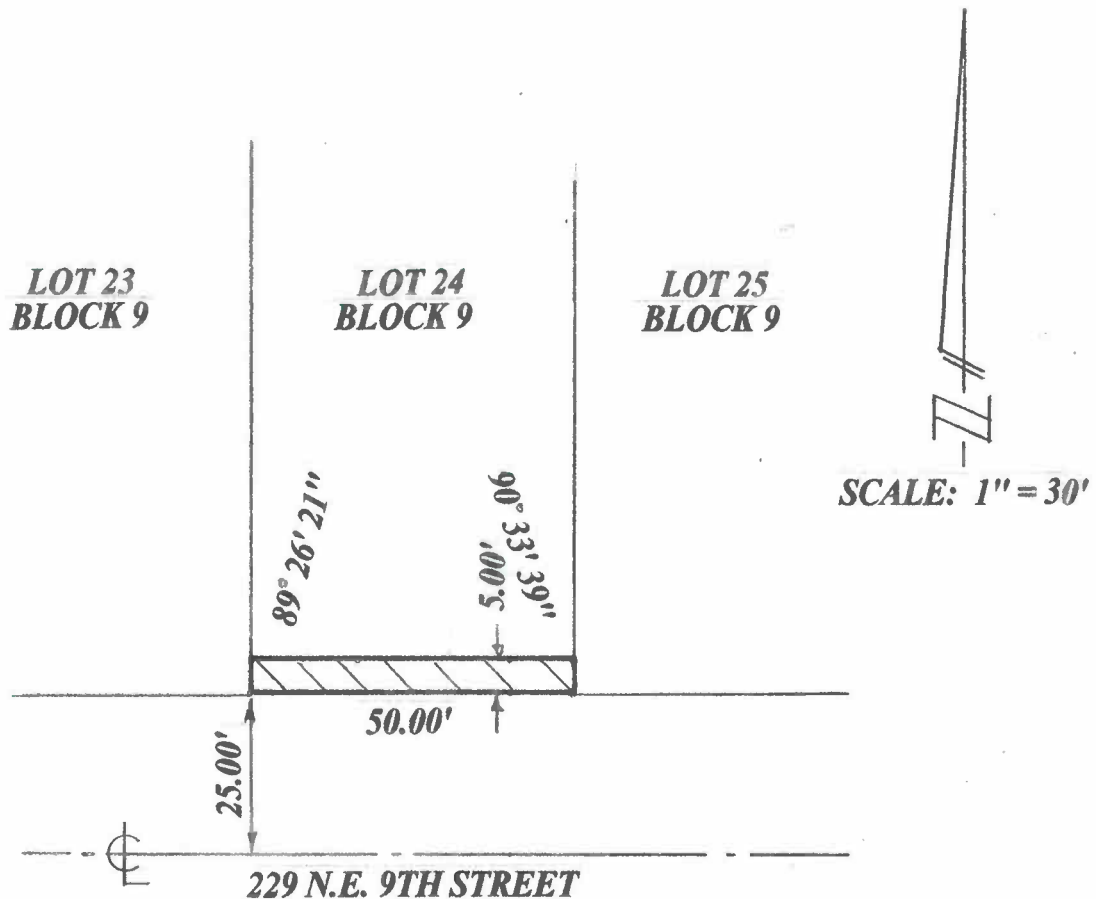
SKETCH OF DESCRIPTION

EXHIBIT 'A'

THE SOUTH 5.0 FEET LOT 24, BLOCK 9

DELL PARK

According To The Plat Recorded In Plat Book 8, Page 56, Recorded In The Public
Record Of Palm Beach County, Florida. Said Land Situate, Lying, And Being In
Palm Beach County, Florida. .



AUTHORIZATION NUMBER LB8804

I HEREBY CERTIFY THAT THE **SKETCH OF DESCRIPTION**
SHOWN HEREON MEETS THE STANDARDS OF PRACTICE SET
FORTH IN CHAPTER S.J-17-050-052, FLORIDA ADMINISTRATIVE
CODE PURSUANT TO SECTION 472.027, FLORIDA STATUTES.

HARRY A. BURGESS PLS 5089

Renner Burgess, Inc.

LAND SURVEYING

801 S.E. 6th Ave., Suite 101
Delray Beach, FL 33483

Phone 561-243-4824
Fax 243-4868