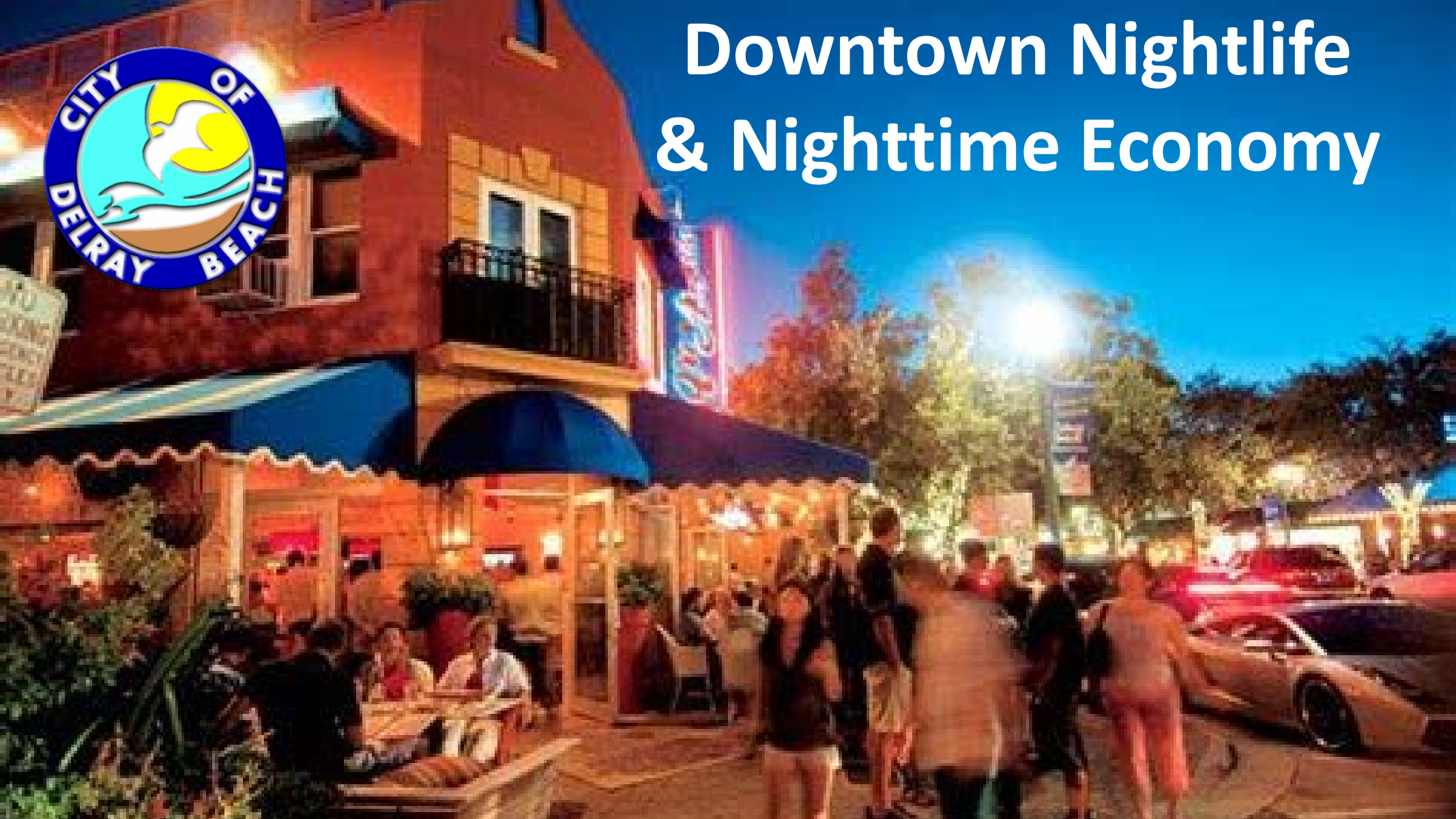




# Downtown Nightlife & Nighttime Economy

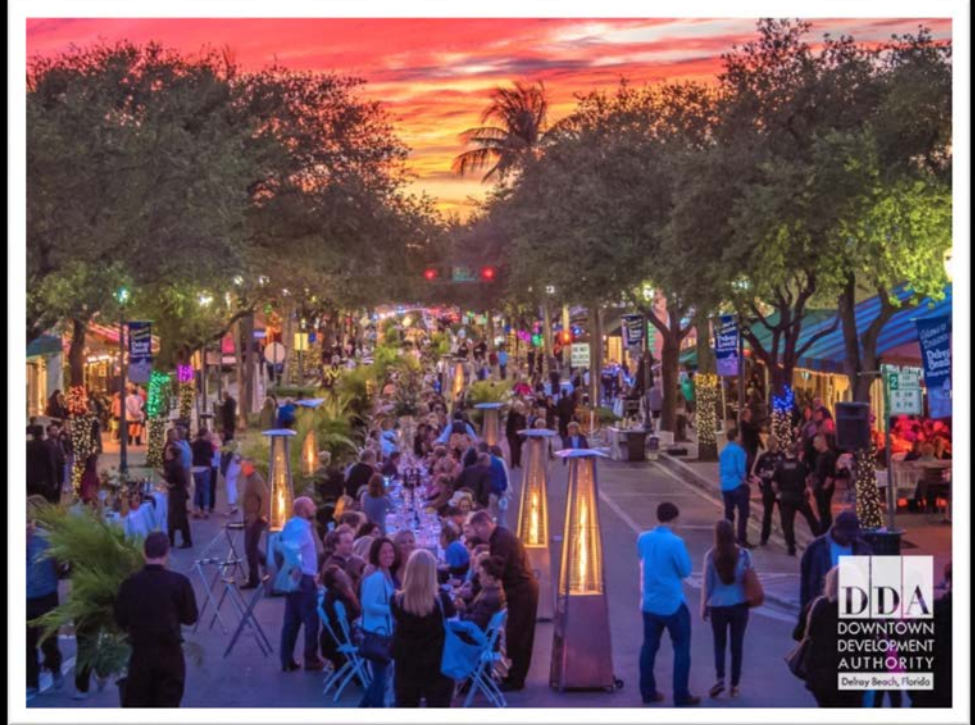




# Downtown Delray Beach

## Workshop Discussion:

- Nightlife (5pm – 4am)
- Programs/Initiatives
- Immediate Issues
- Policy Direction/  
Options





# Downtown Delray Beach

Downtown Delray Beach is a vibrant destination with shopping, dining, entertainment, art, and culture, with increasingly more residents/employees(ers)

## Commission Priority

*“Maintain and enhance the look and charm of the downtown”*

(SBP P2-1)



# Nightlife/Nighttime Economy

Restaurants/Bars  
Sidewalk cafes  
Charm/Vibrancy  
Employment  
Events/Entertainment  
“Most Fun Small Town”  
Support industries



Safety/Security  
Traffic/Parking  
Noise/nuisances  
Quality of Life  
Impact on city services  
Underage drinking  
Nature calls



# Downtown Delray Beach



- DDA initiatives/programs
- Clean and Safe Team
- Police & Fire
- Safety Ambassadors
- 2017 Workshop Nighttime Economy
- Wayfinding (pending)
- Noise Ord updates (pending)





# Nightlife/Nighttime Economy



## Immediate Issues:

- Life safety - occupancy (over capacity)
- Permitted use - restaurants or bars; no “hybrids” or transition permitted
- City services – associated impacts



# Occupancy

Video 1



# Occupancy

## Video 2





# Land Development Regulations

## “Bona fide” Restaurants

An establishment engaged primarily in the service of food where the sale or service of alcoholic beverages is incidental to the sale and service of food.

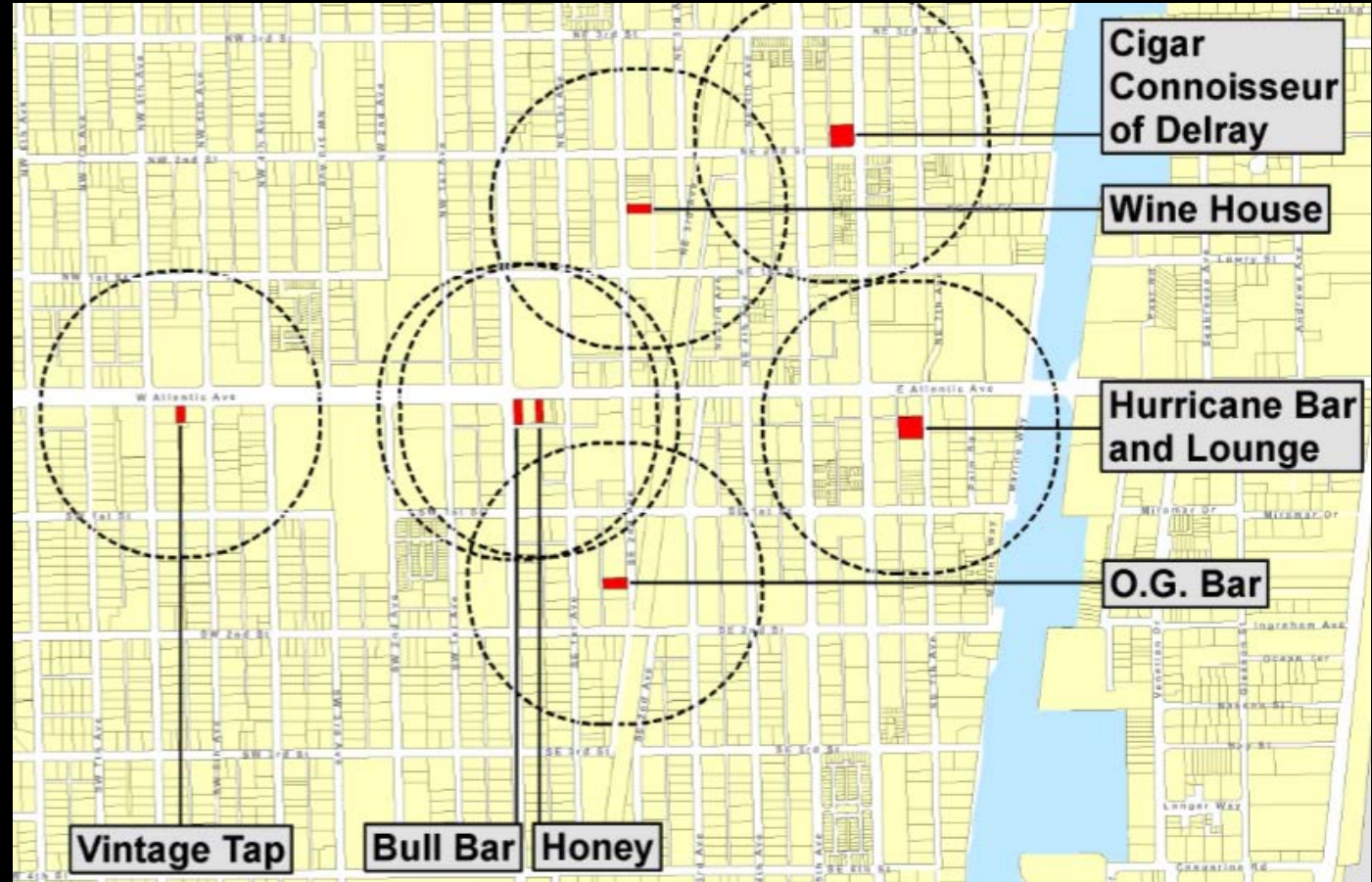
## “Standalone” Bars

Any licensed premises devoted during any time of operation to serving alcoholic beverages in which the serving of food, if any, is merely incidental.

No current use which permits both uses within same space or a transition to a “nightclub” setting.

## Standalone Bars

- Separation (not more than 1 per block or 750') from another bar
- Separation (300') from school or church
- Late night businesses (12am-5am) separation (300') from residentially-zoned property
- Does not include restaurants – many functioning more as bars at certain times





# Policy Direction & Options

## Direction/Recommendation

- Maintain existing rules
- Codify “Hybrid” or transition of use – w/special approval/ rules
- Amend LDRs regarding standalone bars and outdoor use(s)

## What options don't do...

- Change enforcement of occupancy limits or change limits (without approved life safety plan)
- Change noise rules
- Change sidewalk cafe rules