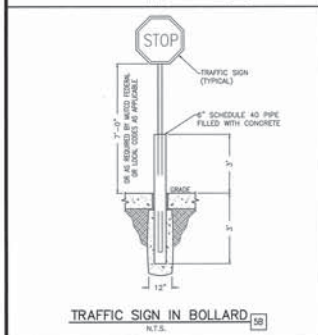
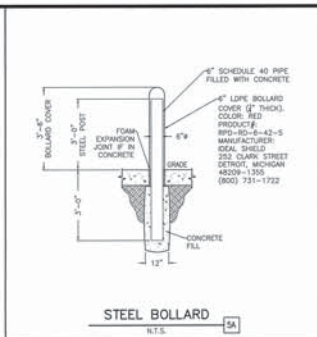


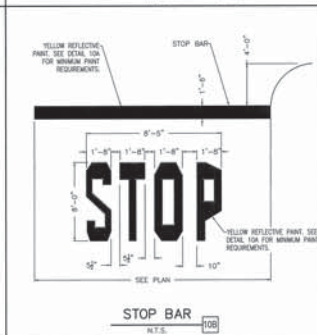
TYPE "B" CONCRETE CURB AND GUTTER
N.T.S. 18



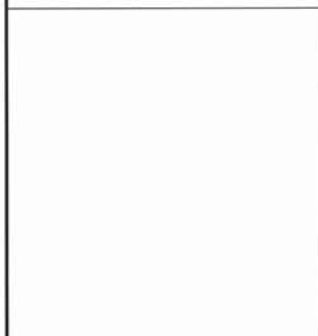
TRAFFIC SIGN IN BOLLARD
N.T.S. 19



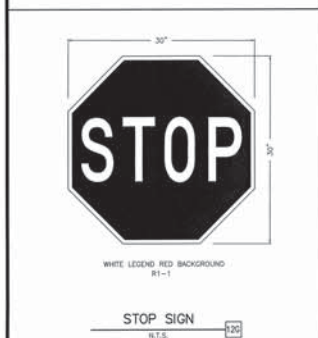
STEEL BOLLARD
N.T.S. 20



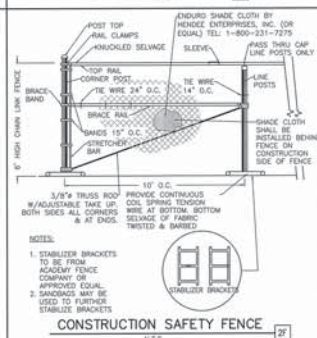
STOP BAR
N.T.S. 21



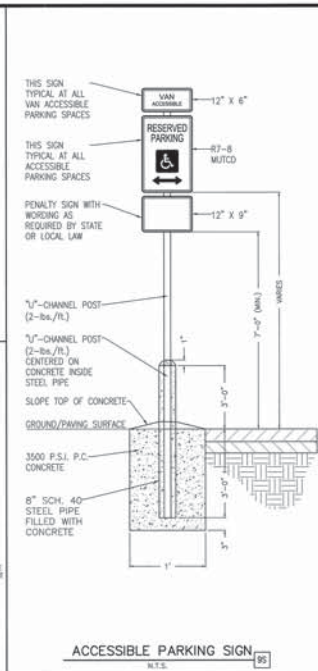
"NO PARKING" SIGN
N.T.S. 22



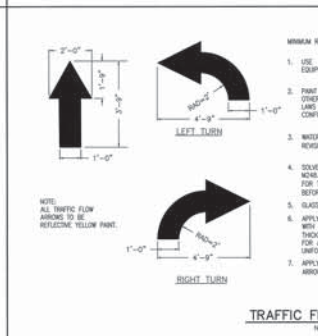
STOP SIGN
N.T.S. 23



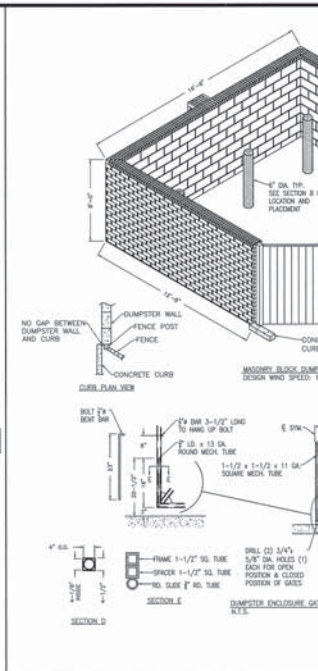
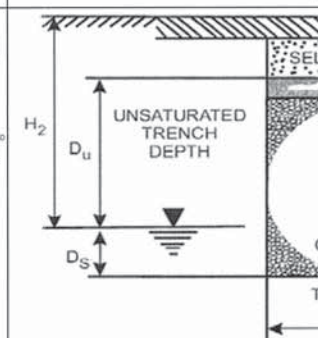
CONSTRUCTION SAFETY FENCE
N.T.S. 24



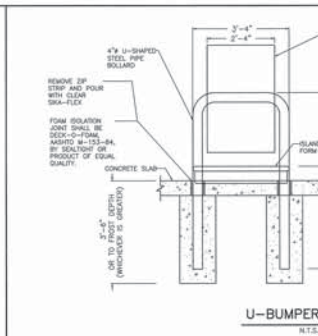
ACCESSIBLE PARKING SIGN
N.T.S. 25



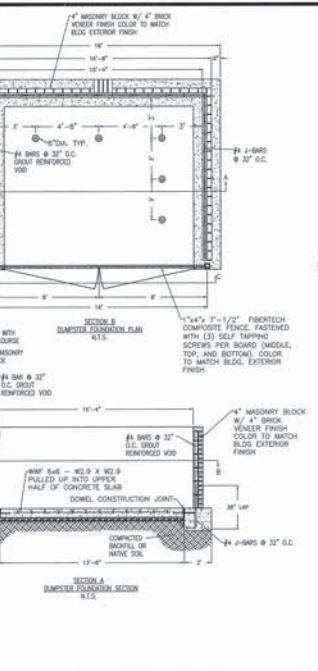
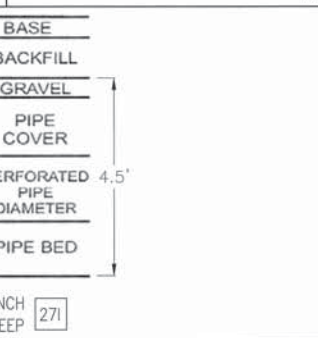
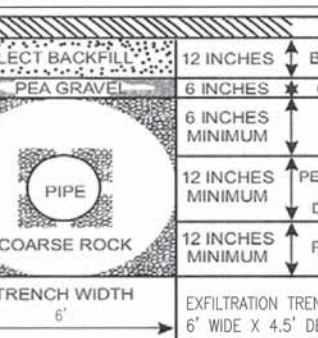
TRAFFIC FLOW ARROW
N.T.S. 26



DUMPSTER ENCLOSURE
N.T.S. 27



U-BUMPER DETAIL
N.T.S. 28



SHEET NO. C-12

DETAIL SHEET

WALMART SUPERCENTER #1589

16211 S. MILITARY TRAIL

DELAWARE BEACH, FLORIDA

REV. 5

DATE

DESIGN

DRAWN

CHECKED

APPROVED

GREENBERGFARROW

16211 S. MILITARY TRAIL

DELAWARE BEACH, FLORIDA

FOR NO. 28/28/28

MURPHY OIL USA, INC.

MURPHY

200 PEACH STREET

P.O. BOX 7000

EL DORADO, AR 71730-7000

USA

