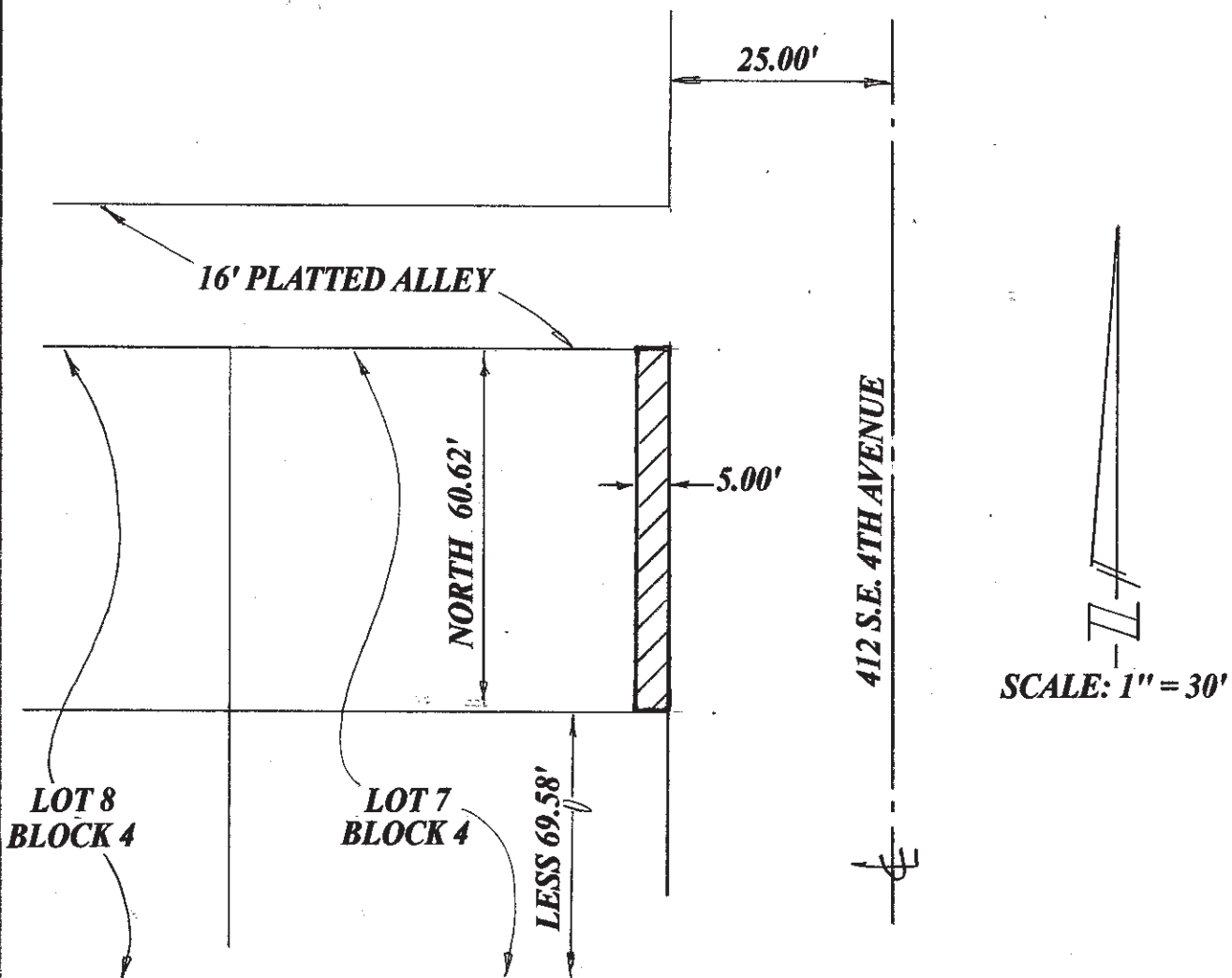


SKETCH OF DESCRIPTION

THE EAST 5.00 FEET OF THE NORTH 60.62 FEET OF LOT 7, BLOCK 4

OSCEOLA PARK

According To The Plat Recorded In Plat Book 3, Page 2, Recorded In The Public
Record Of Palm Beach County, Florida Said Land Situate, Lying, And Being In
Palm Beach County, Florida .



Job No. 8-18-051

I HEREBY CERTIFY THAT THIS SKETCH OF DESCRIPTION
SHOWN HEREON MEETS THE STANDARDS OF PRACTICE SET
FORTH IN CHAPTER SJ-17-050-052 FLORIDA ADMINISTRATIVE
CODE PURSUANT TO SECTION 172.027, FLORIDA STATUTES

HARRY A BURGESS PLS 5089

Renner Burgess, Inc.

LAND SURVEYING

801 S.E. 6th Ave., Suite 101
Delray Beach, FL 33483

Phone 561-243-4624
Fax 243-4869