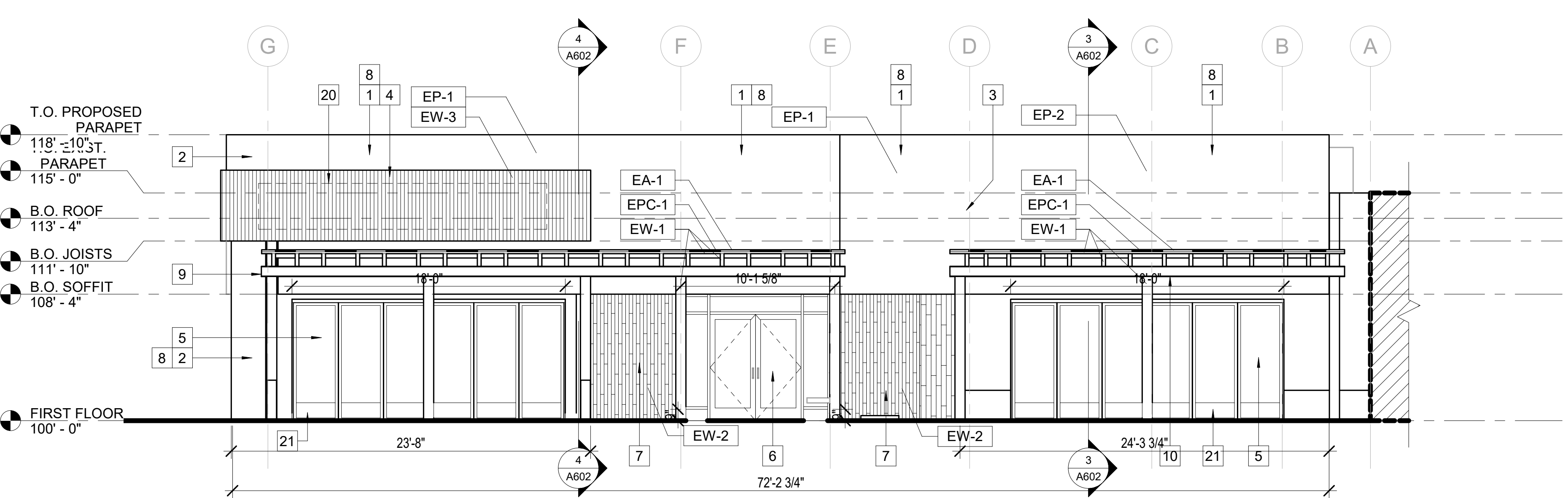


KEYNOTES

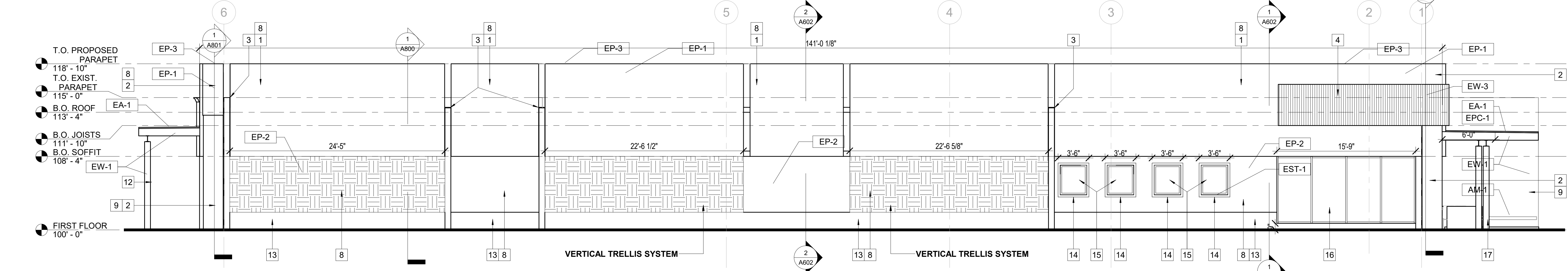
- PROPOSED PARAPET, TUBE STL. & MTL. FRAME STRUCTURE W/ STUCCO FINISH, REFER TO DETAILS
- EXIST. CONC. BLK. WING WALL TO REMAIN, PROVIDE NEW FRAME EXTENSION ABV., REFER TO DETAILS
- EXIST. CONC. BLK. WING WALL TO REMAIN
- SIGNAGE, WOOD RAIN SCREEN ON MTL. STUD, ACCENT PANEL
- NANA DOOR, REFER TO DOOR SCHEDULE & DETAILS
- STOREFRONT, REFER TO STOREFRONT ELEVATIONS
- WOOD PANELING FACADE, REFER TO PARTITION TYPES
- STUCCO FINISH, TEXTURED
- NORTH ENTRY TRELLIS SYSTEM, FOR DETAILED PLANS & INFORMATION REFER TO A301
- NORTH BAR TRELLIS SYSTEM, FOR DETAILED PLANS & INFORMATION REFER TO A303
- COURTYARD TRELLIS SYSTEM, FOR DETAILED PLANS & INFORMATION REFER TO A304
- SOUTH TRELLIS SYSTEM, FOR DETAILED PLANS & INFORMATION REFER TO A306
- STUCCO WATERTABLE, REFER TO DETAIL
- WALL MOUNT WINDOW DESIGN GUARD, REFER TO MANUF. SPECS FOR INSTALLATION
- WINDOW, REFER TO WINDOW SCHEDULE & DETAILS
- EXISTING STOREFRONT TO REMAIN, NOT IN SCOPE OF WORK
- 8" GROUND-FACE CONC. BLK. SITE WALL, REFER TO STRUCT. DRAWINGS FOR DETAILS
- DOOR, REFER TO DOOR SCHEDULE & DETAILS
- EXISTING SOFFIT TO REMAIN, NOT IN SCOPE OF WORK
- CONC. BLOCK PRIVACY WALL, FOR DETAILS REFER TO 2 / A800
- FOLDABLE WALL KICK PLATE

Table 6.4.13(i) Dimensional Requirements for Storefronts			
	Minimum	Maximum	
A	Building Setback	10 ft.	North Facade 15'
B	Store Width	N/A	East Facade 72' 141'
C	Storefront Base	9 in.	9"
D	Glazing Height	8 ft.	8' 4"
E	Required Openings	80%	63% 70% - (including vert. trellis)
Maximum Allowable Encroachment of Elements in All Districts			
F	Awining Projection	3 feet	6' N/A
G	Projecting Sign	N/A	N/A



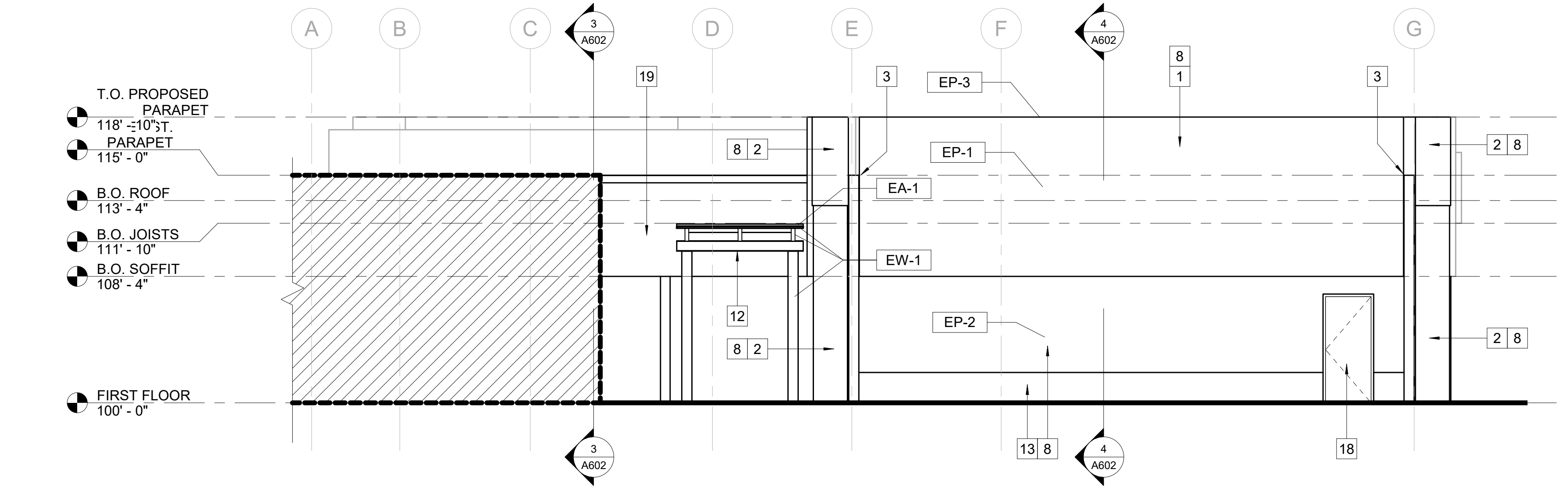
1 BUILDING ELEVATION - PROPOSED NORTH

3/16" = 1'-0"



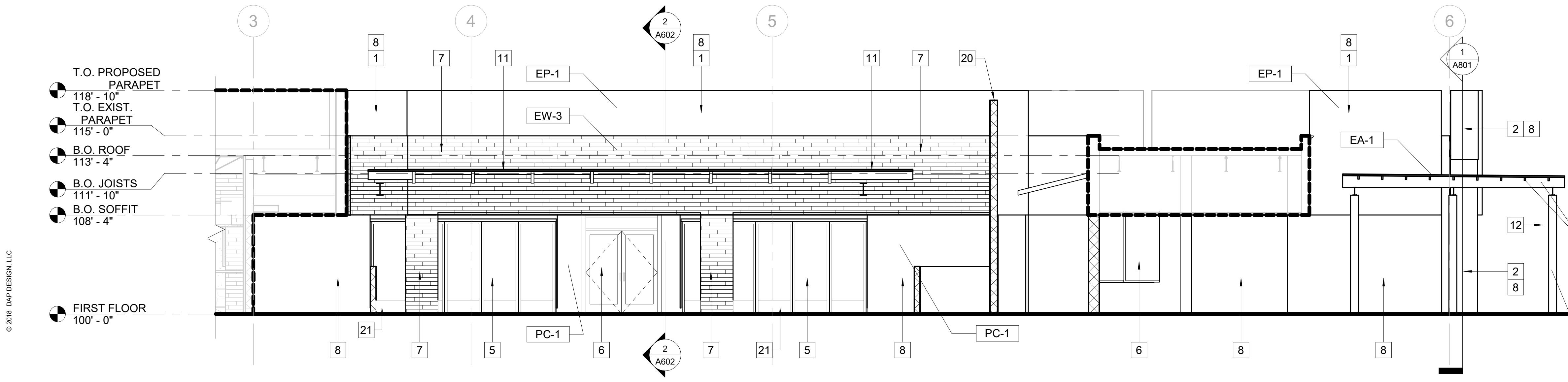
2 BUILDING ELEVATION - PROPOSED EAST

3/16" = 1'-0"



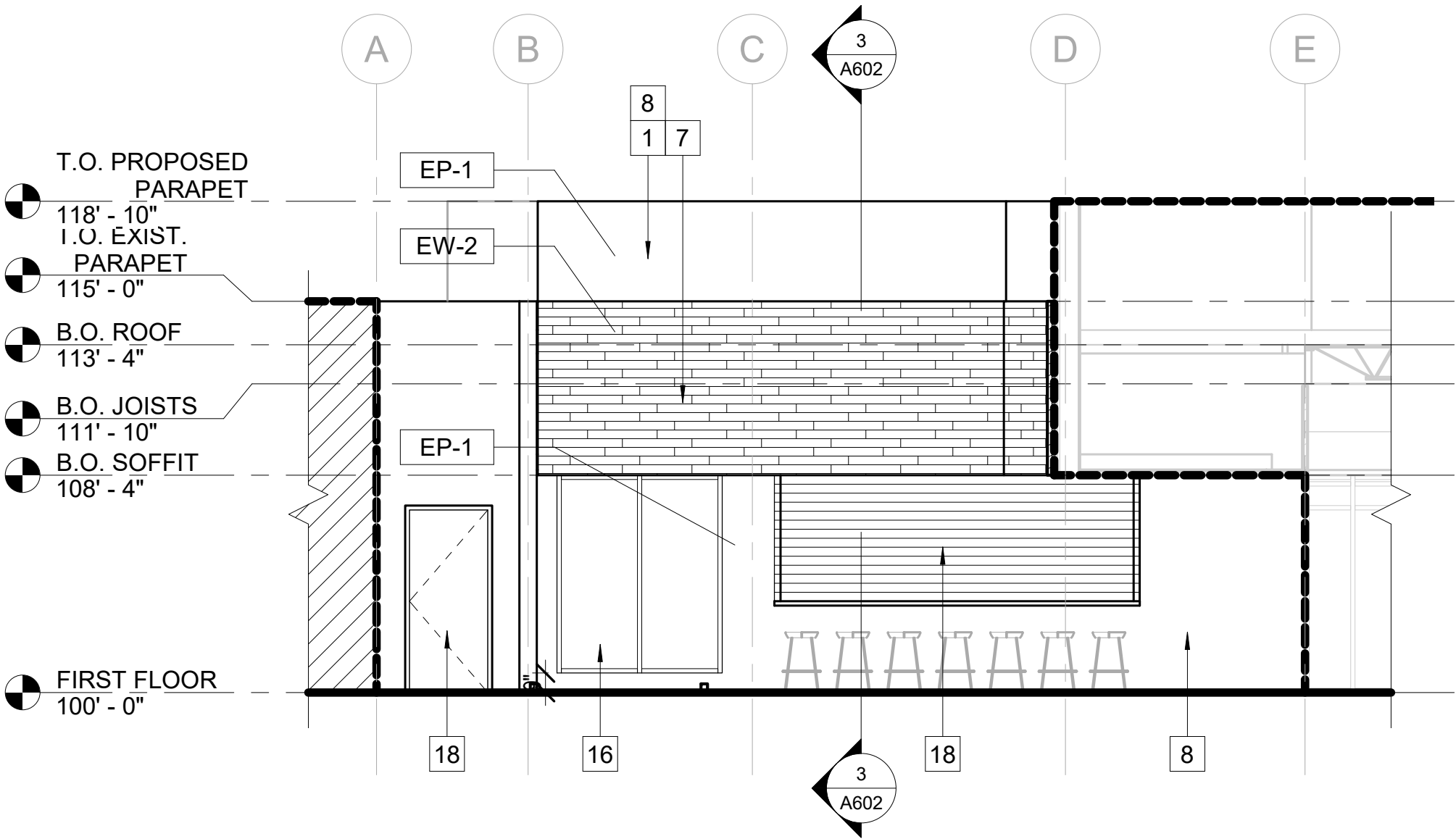
3 BUILDING ELEVATION - PROPOSED SOUTH

3/16" = 1'-0"



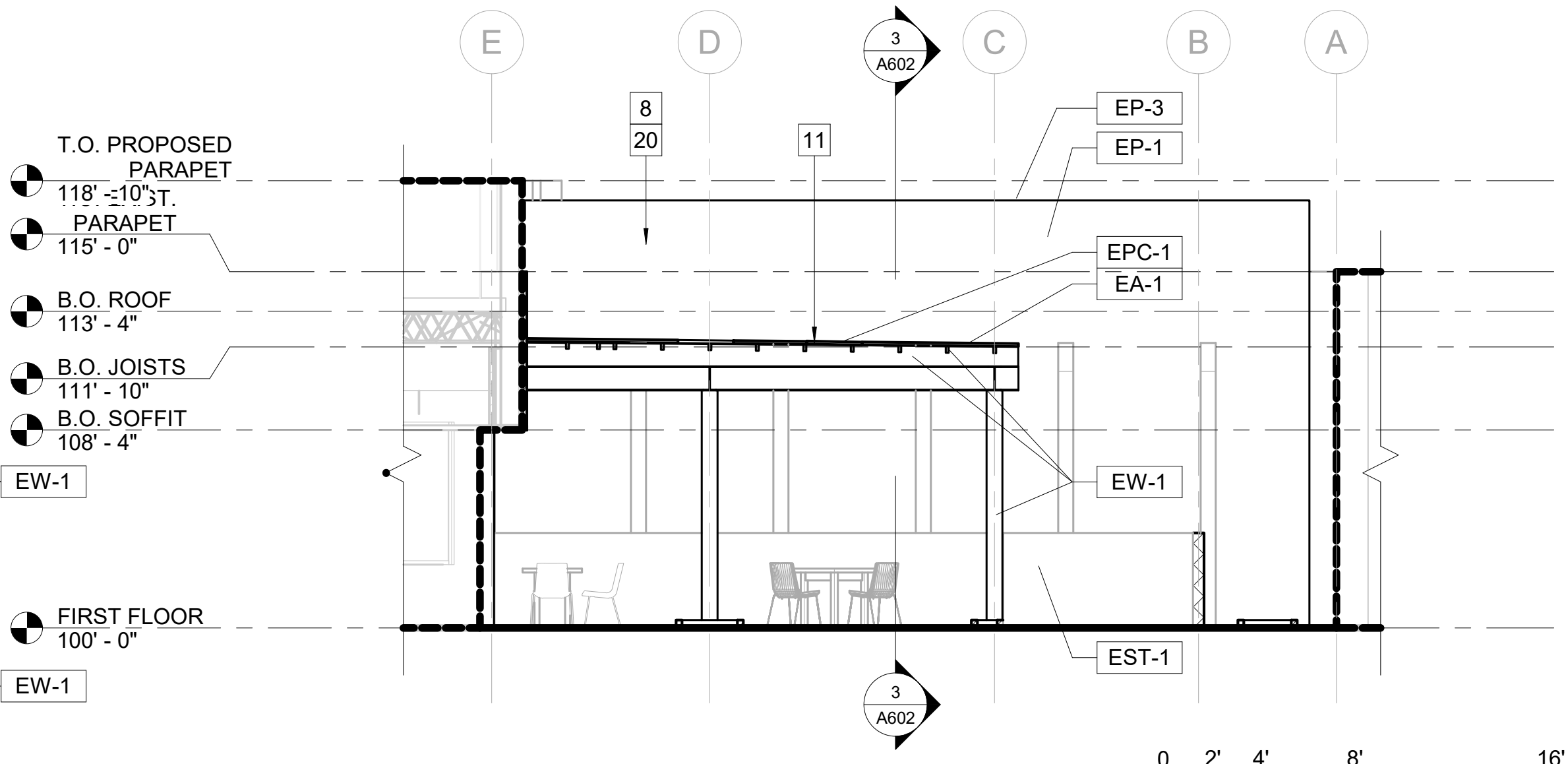
5 BUILDING ELEVATION - PROPOSED C.Y. EAST

3/16" = 1'-0"



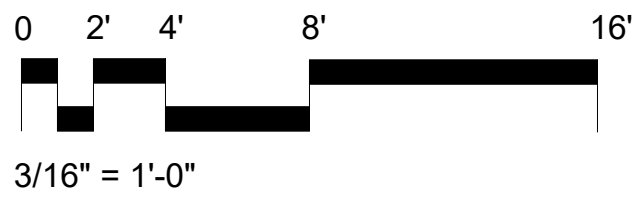
4 BUILDING ELEVATION - PROPOSED C.Y. NORTH

3/16" = 1'-0"



6 BUILDING ELEVATION - PROPOSED C.Y. SOUTH

3/16" = 1'-0"



3/16" = 1'-0"