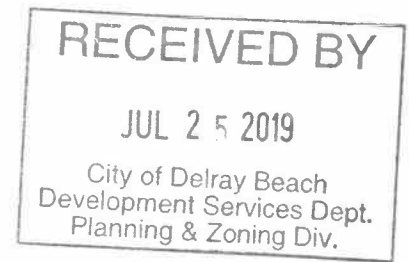


Delray Beach Historical Society Educational Heritage Gardens



Project Overview

Our three historic cottages are brimming with history exhibits, classes, workshops and lectures year-round. Our vision is to transition the campus into a destination for locals and visitors alike to experience peace, tranquility and most importantly, learn about local history through nature. Our Heritage Garden will provide a unique and fascinating peek into what our first inhabitants encountered, how the first settlers lived and built the town and how natural resources contributed to food sources, medicine and the economy.

With development on the rise and green space dwindling in South Florida, we have an added incentive to educate visitors about how native plants and Florida-friendly gardens can be a gateway to sustainability and critical for protecting our coastlines and our inland developed areas. Many of the founders who built Delray from the ground up relied on the generous bounty that came from the land and ocean for survival. As part of our vision for education and outreach, we want to provide an outdoor, interactive experience that engages and inspires visitors of all ages to preserve our history, cultural heritage, and planet for future generations.

The Heritage Educational Garden will feature a series of garden vignettes spread across our 34,000 square foot campus. Each vignette will be themed around a story from our local history or a demonstration of a particular natural habitat from pioneer days or an important statement about conservation and sustainability.

Our Vignettes and specific garden areas are identified as follows:

- 1) Oak Hammock
- 2) Forested Lowland
- 3) Sand Pine Scrub
- 4) Pollinator Garden (Bee, Butterfly and Hummingbird)
- 5) Pine Flatwood
- 6) Fruit Tree Grove
- 7) Pineapple and Tomato Farm (Raised Beds)
- 8) Turn of the Century Herb Garden
- 9) Heritage Beauty Garden One (Corner of 1st & Swinton with sign)
- 10) Heritage Beauty Garden Two (Entrance to Cason Cottage)
- 11) Cinnamon Bark Tree Entrance (Main entrance to campus off 1st Street)
- 12) Fence Perimeter Plantings

Maintenance Plan

Our grounds are maintained regularly by the City of Delray Beach. This includes mowing, trimming, clearing out beds, basic irrigation and mulching. However, with the introduction of our expansive specialty gardens, we are building in long-term maintenance plans led by professional native plant caregivers. Our funding plans have maintenance and targeted irrigation costs built in to ensure survival and sustainability of the Heritage Gardens throughout the seasons.

In addition, the Delray Beach Historical Society has formed a "Garden Club" made up of enthusiasts and master gardeners who can oversee the care of the Heritage Gardens, direct volunteers and keep the professional team on schedule and address issues that may arise.

Funding Sources

The Delray Beach Historical Society has received a grant from the Grass River Garden Club for \$15,000 and the DBHS has raised \$28,000 as of June 1, 2019 through fundraising efforts.

Campus Areas of Opportunity

RECEIVED
JUL 25 2019
City of Delray Beach
Development Services Dept.
Planning & Zoning



CASON COTTAGE MUSEUM

PLANT PALETTE

Pine Flatwood Species



Wax Myrtle tree



Silver Saw Palmetto



Gallberry



Fetterbush



Tarflower



Coontie



Palm Beach Cap Boulder



Coral Rock Boulder

**CASON COTTAGE MUSEUM
PLANT PALETTE
Forested Lowland**



Pond Cypress



Red Maple



Fakahatchee Grass



Cocoplum



Ferns



Cordgrass



Palm Beach Cap Boulders



Black Plastic Landscape Pond with Aerator

CASON COTTAGE MUSEUM
PLANT PALETTE
Scrub Species



Sand Pine



Scrub Palmetto



Sand Live Oak



Florida Rosemary



Gopher Apple



Prickly Pear Cactus



White Sugar Sand



Devilwood

CASON COTTAGE PLANT PALETTE

Butterfly/Pollinator Species



Bahama Cassia*



Coontie*



Dwarf Ruellia



Blue Porterweed



Lantana depressa*



Passion Flower vine



Pentas 'Grafitti'



Pipevine



Plumbago



Thryallis

*Native Plants

**CASON COTTAGE
PLANT PALETTE**

Butterfly/Pollinator Species



Firespike

**CASON COTTAGE
PLANT PALETTE
Fruit Tree Species**



Barbados Cherry



Carambola



Meyer Lemon



Key Lime



Calamondin



Jaboticaba

CASON COTTAGE
PLANT PALETTE
Heritage Gardens



Beach Lily*



Beauty Berry*



Blue Porterweed



Cocoplum*



Coontie*



Dwarf Fakahatchee Grass*



Dwarf Firebush*



Dwarf Ruellia



Dwarf Yaupon (Ilex Schillings)*



Horizontal Cocoplum*

*Native Plants

CASON COTTAGE
PLANT PALETTE
Heritage Gardens



Lancewood*



Lantana depressa*



Marlberry*



Necklace Pod*



Sunshine Mimosa*



Thryallis



Palm Beach Cap Boulders



Jamaica Caper*

*Native Plants

CASON COTTAGE MUSEUM
PLANT PALETTE
Oak Hammock Species



Dahoon Holly



Saw Palmetto



Cocoplum



Ferns



Muhly Grass



Palm Beach Cap Boulder

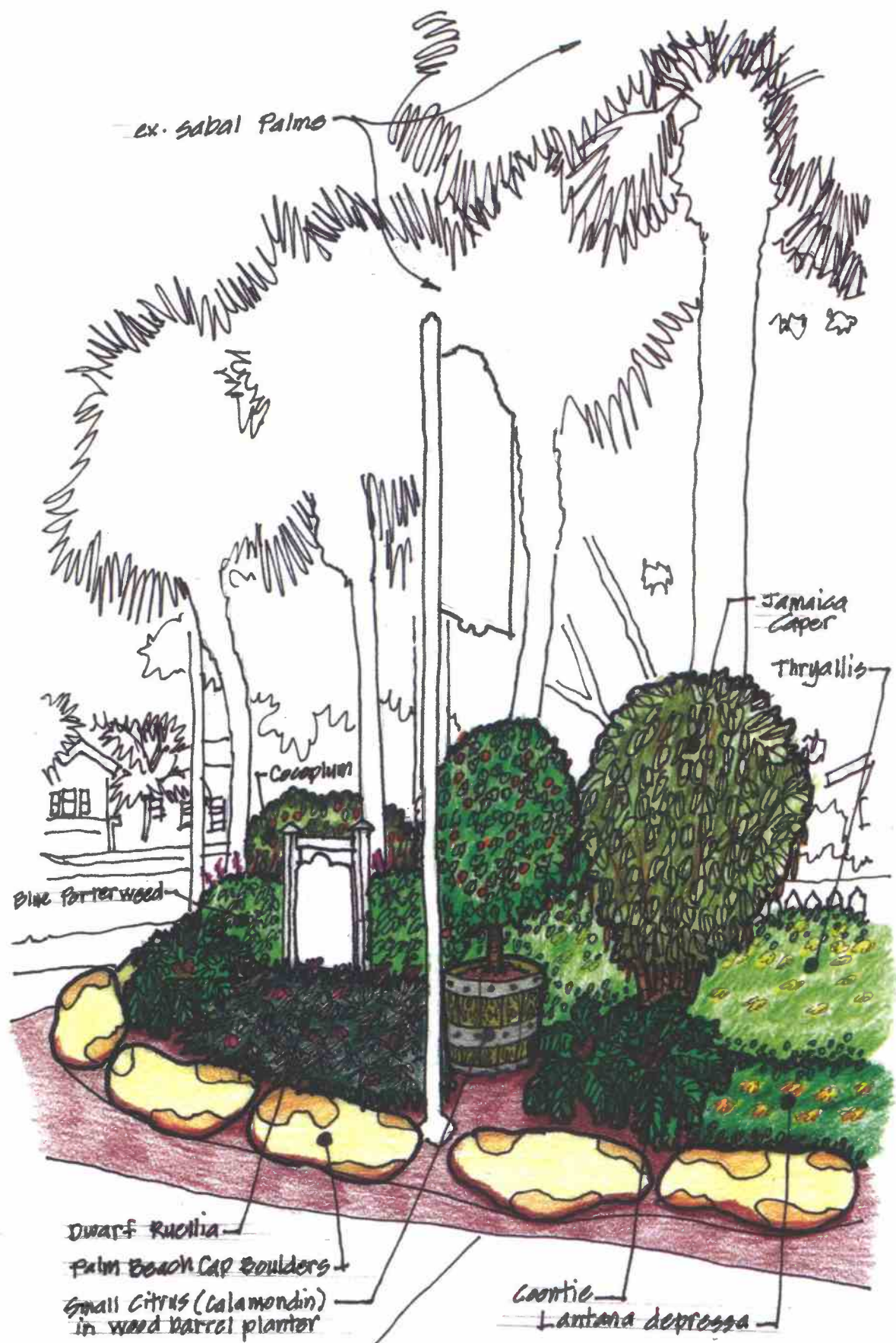
**CASON COTTAGE MUSEUM
MATERIAL PALETTE**



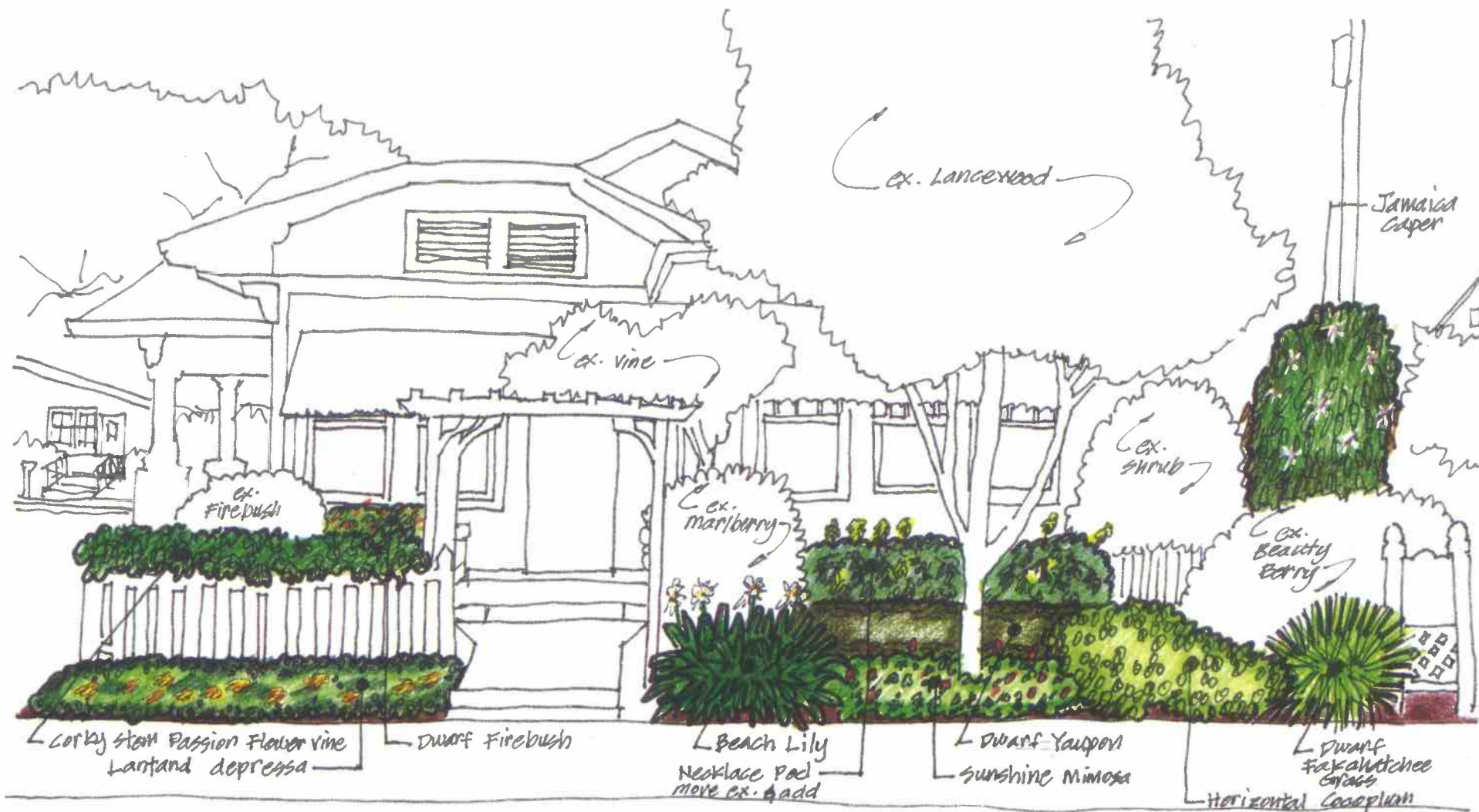
Tabby Paving



Chicago Brick Paving

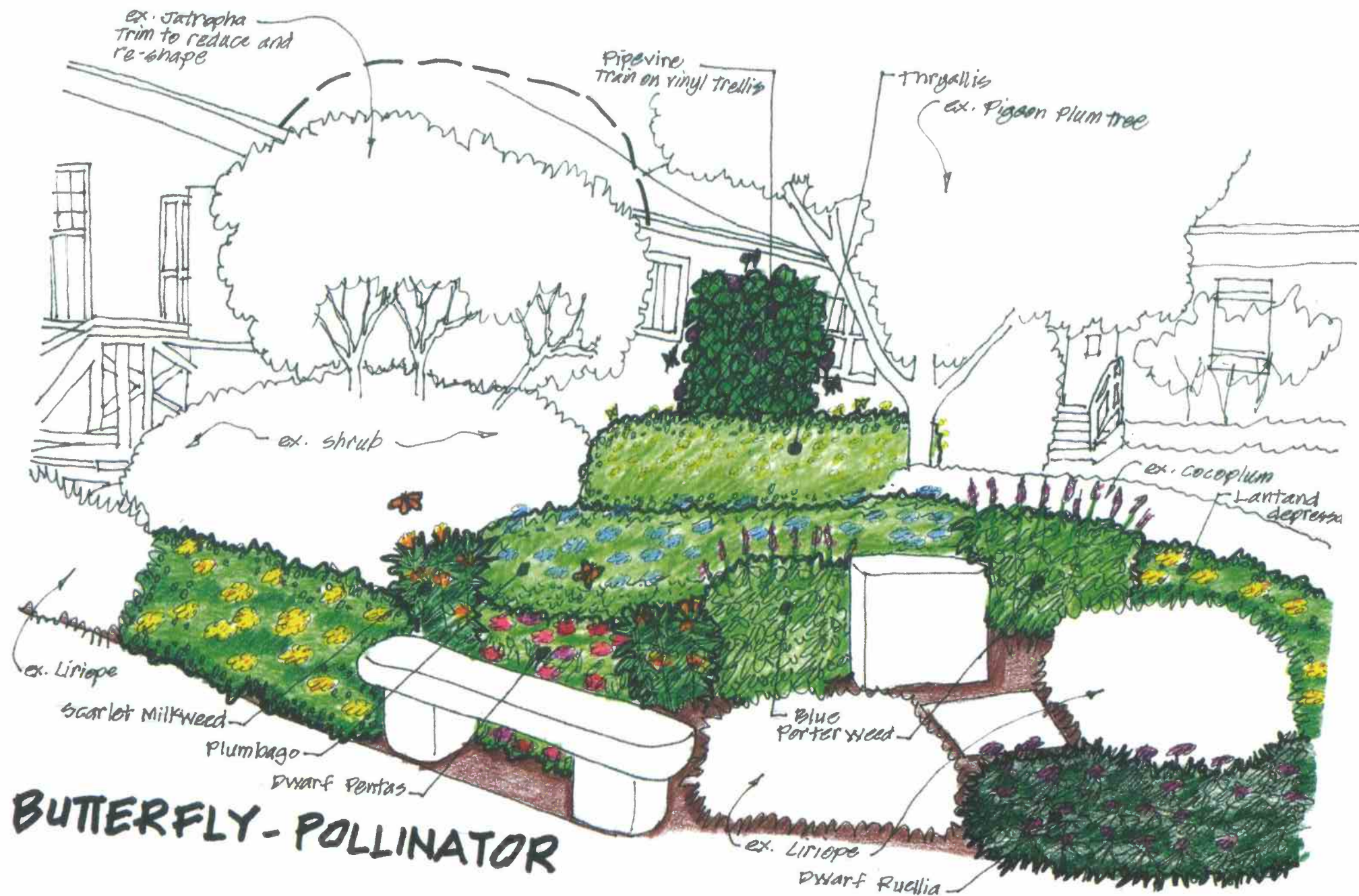


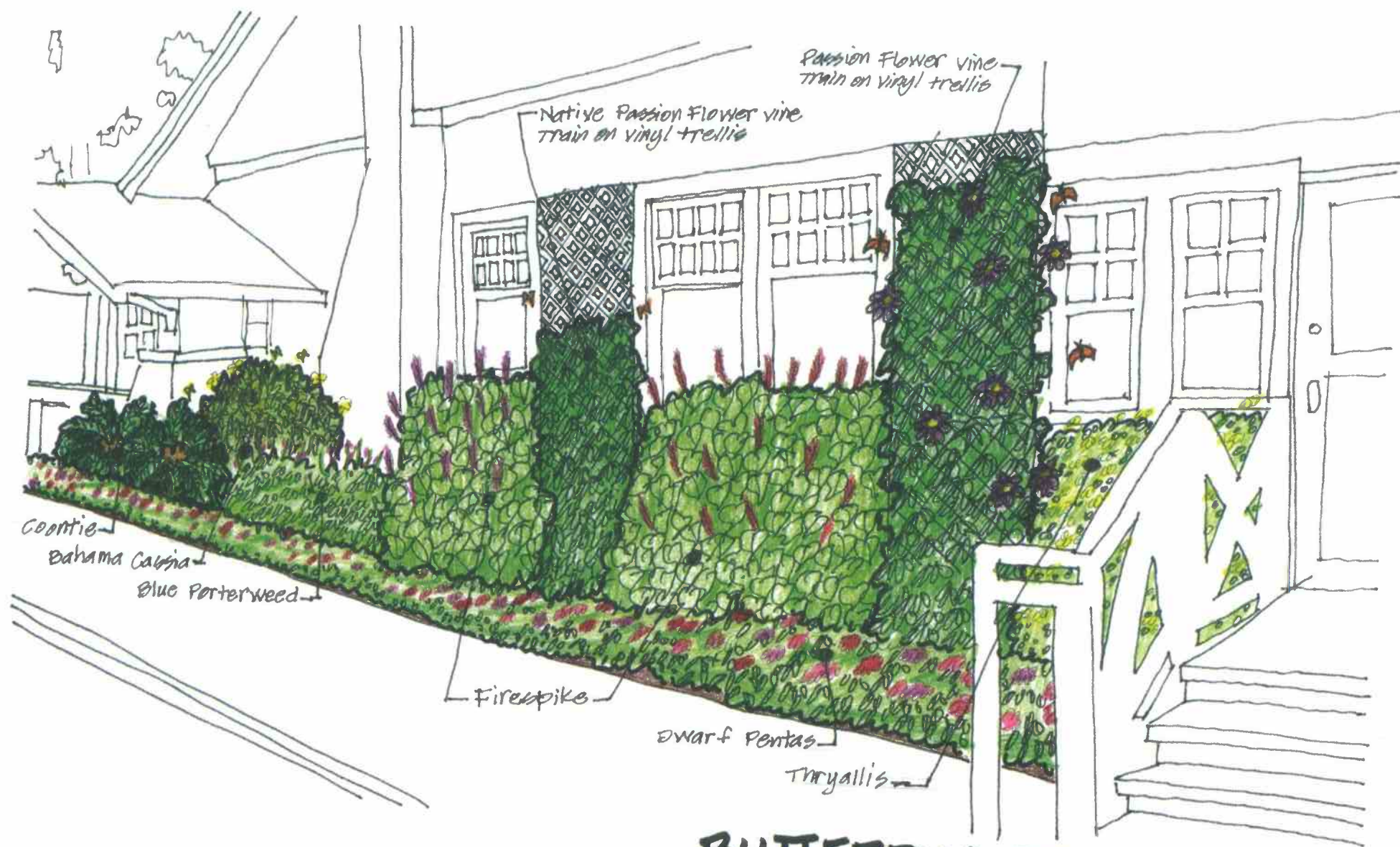
HERITAGE BEAUTY GARDEN



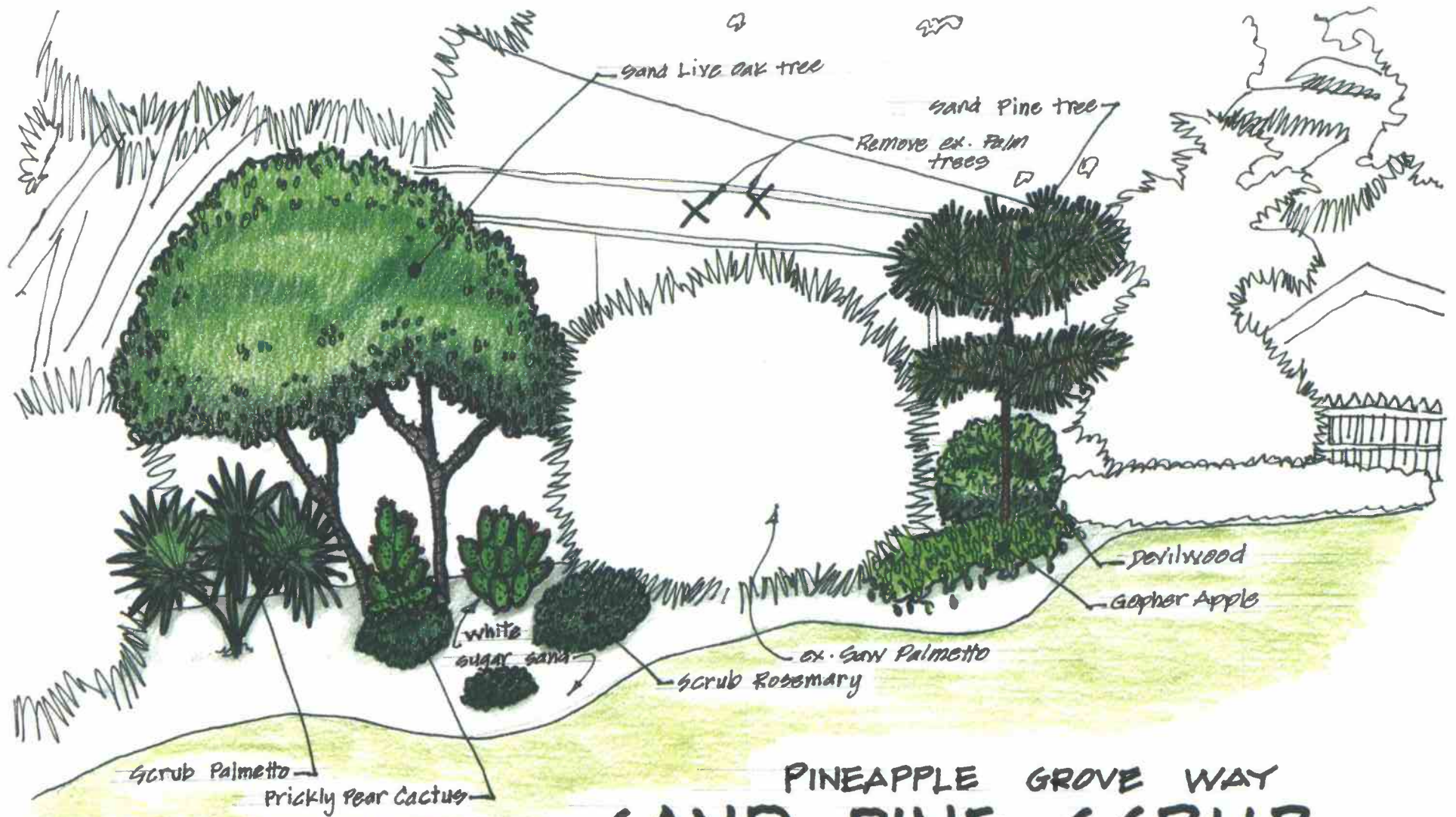
HERITAGE BEAUTY GARDEN

Native Plants for
Curb Appeal

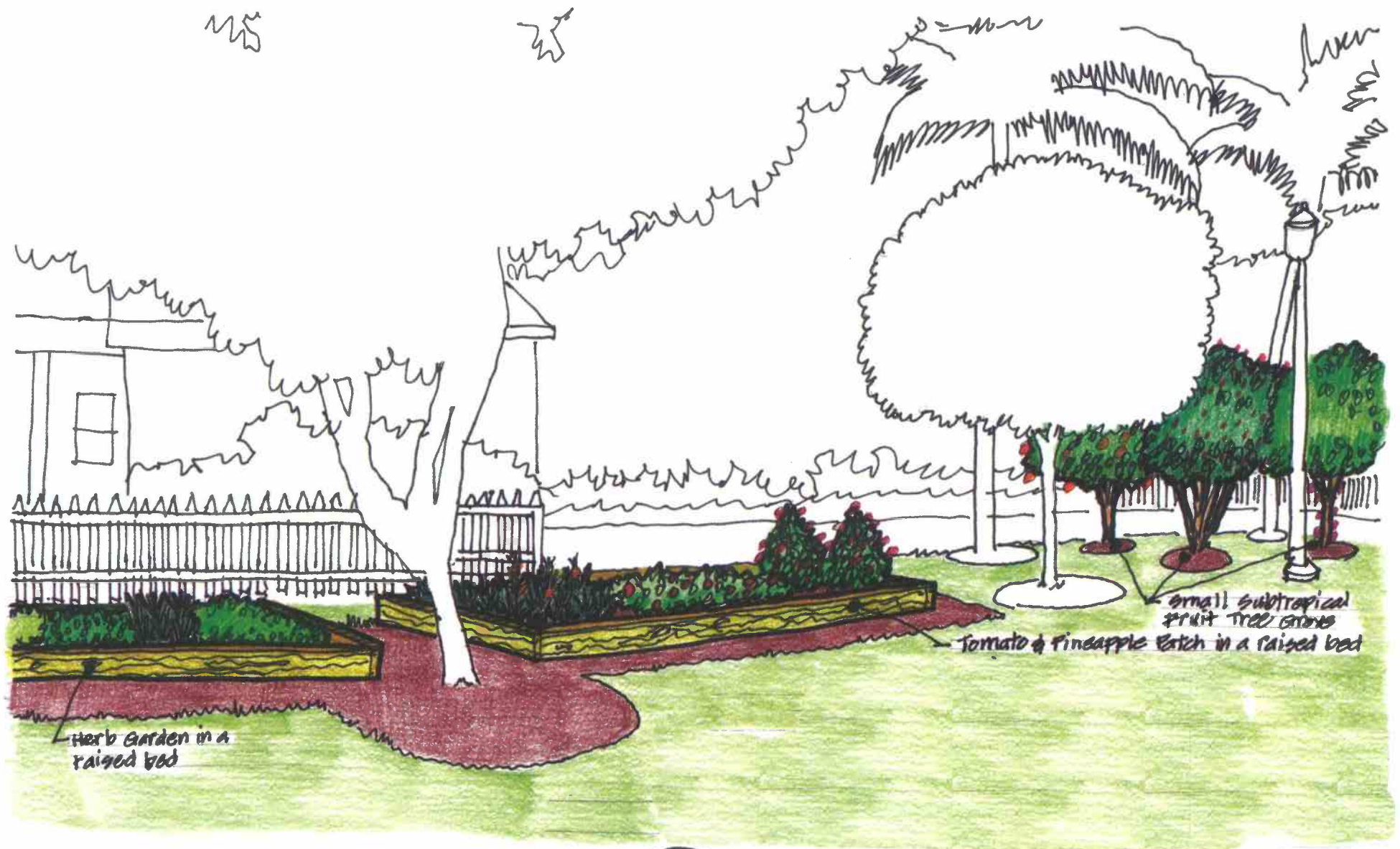




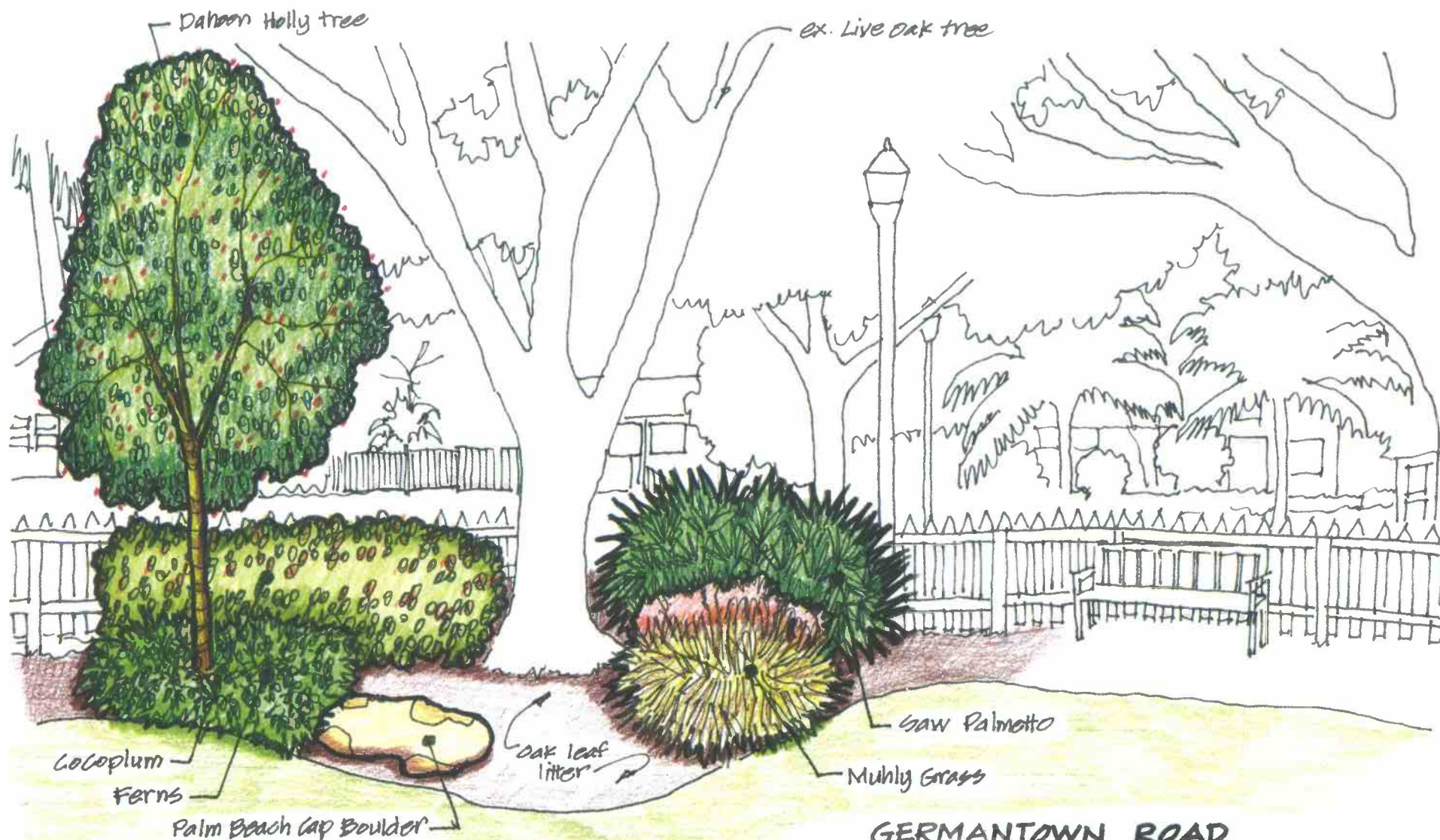
BUTTERFLY-POLLINATOR



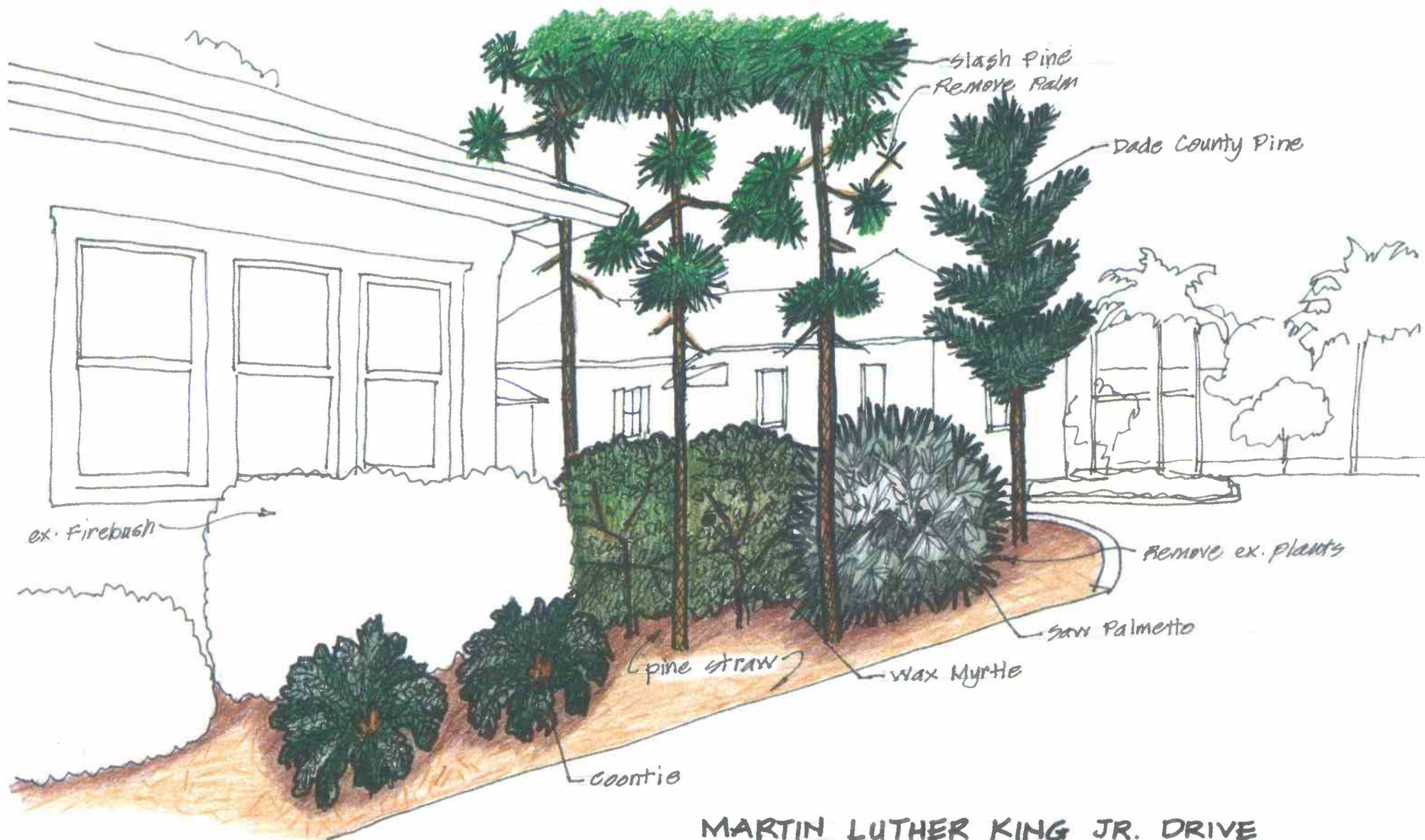
PINEAPPLE GROVE WAY SAND PINE SCRUB



RAISED BEDS



GERMANTOWN ROAD
OAK HAMMOCK



MARTIN LUTHER KING JR. DRIVE
PINE FLATWOOD

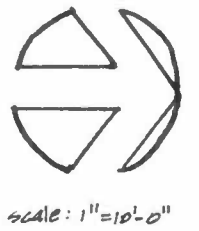
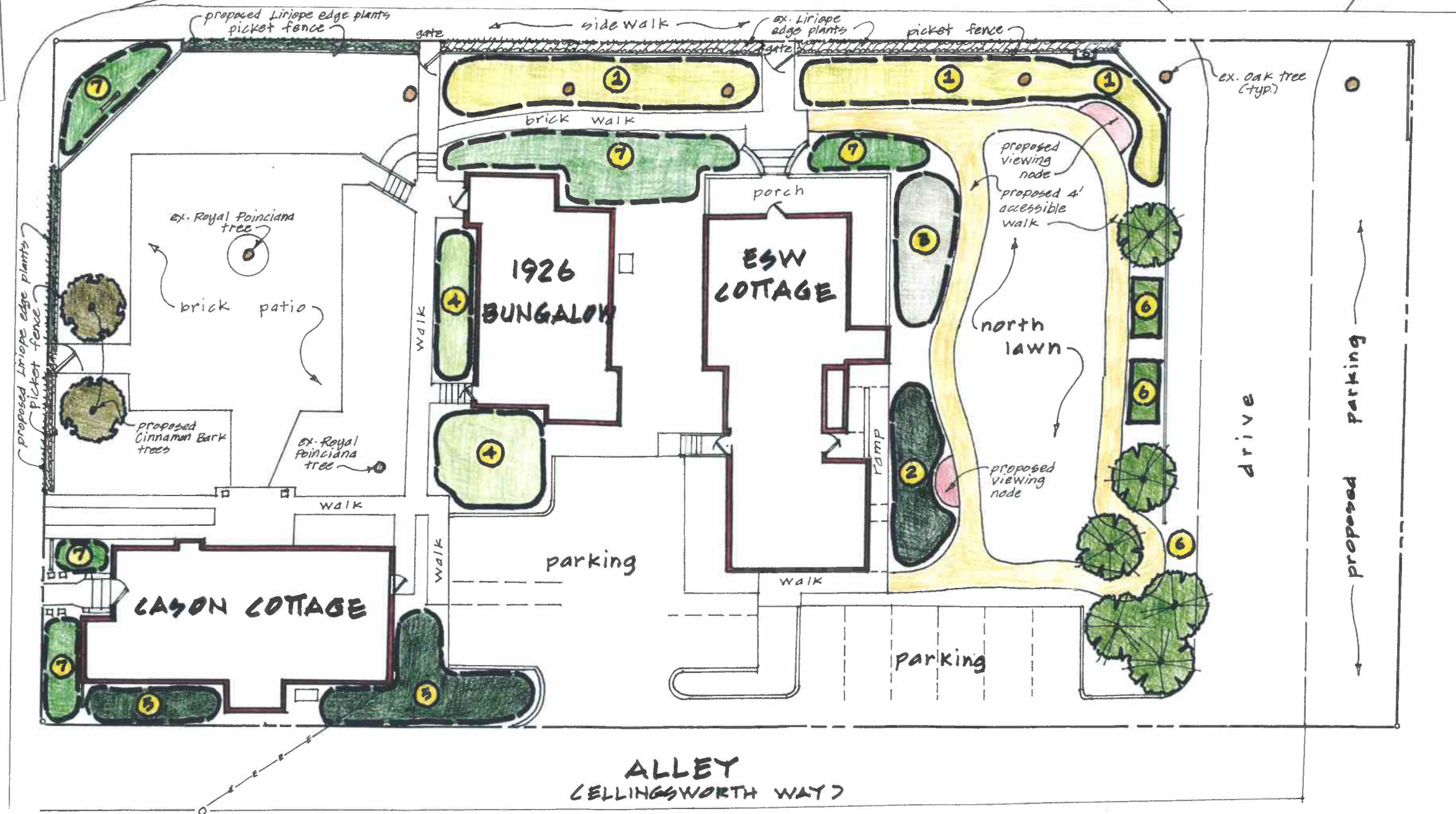
RECEIVED BY

JUL 25 2019

City of Delray Beach
Development Services Dept.
Planning & Zoning Div.

N.E. 1st STREET

SWINTON AVENUE



HERITAGE

GARDEN

VIGNETTES

- ① Germantown Road
OAK HAMMOCK
- ② Lake Ida
FORESTED LOWLAND
- ③ Pineapple Grove Way
SAND PINE SCRUB
- ④ BUTTERFLY - POLLINATOR

- ⑤ Martin Luther King Jr. Drive
PINE FLATWOOD
- ⑥ Turn of the Century
HERB GARDEN - PINEAPPLE & TOMATO FARM
FRUIT TREE GROVE
- ⑦ HERITAGE BEAUTY
'Native Plants' for curb Appeal'

DELRAY BEACH

HISTORICAL SOCIETY

HERITAGE GARDENS