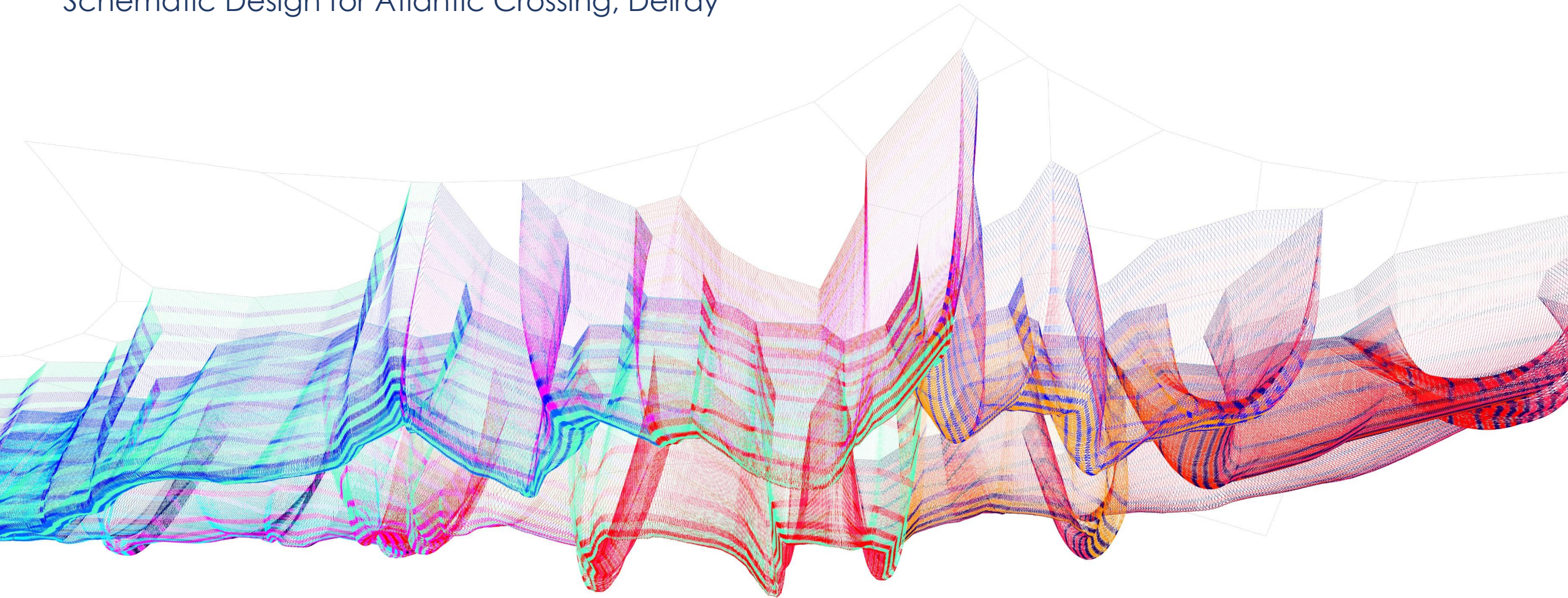


Intracoastal

Schematic Design for Atlantic Crossing, Delray

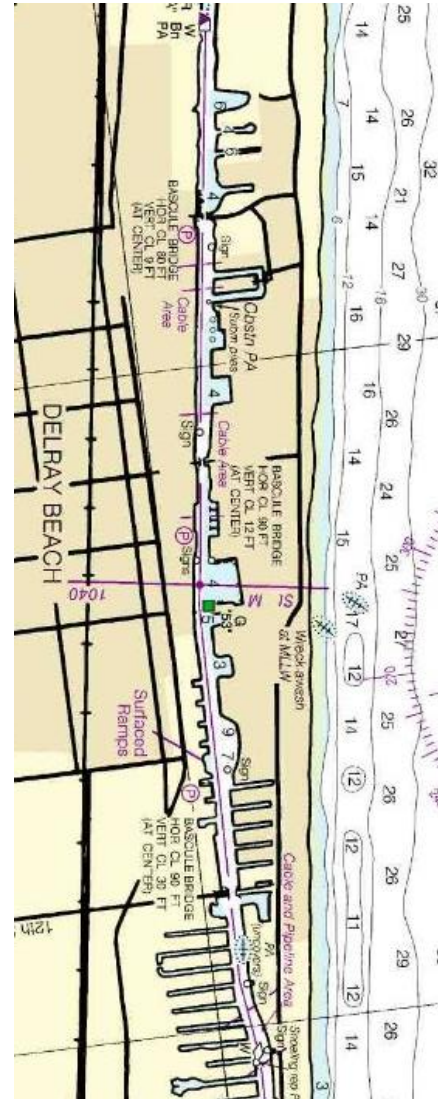
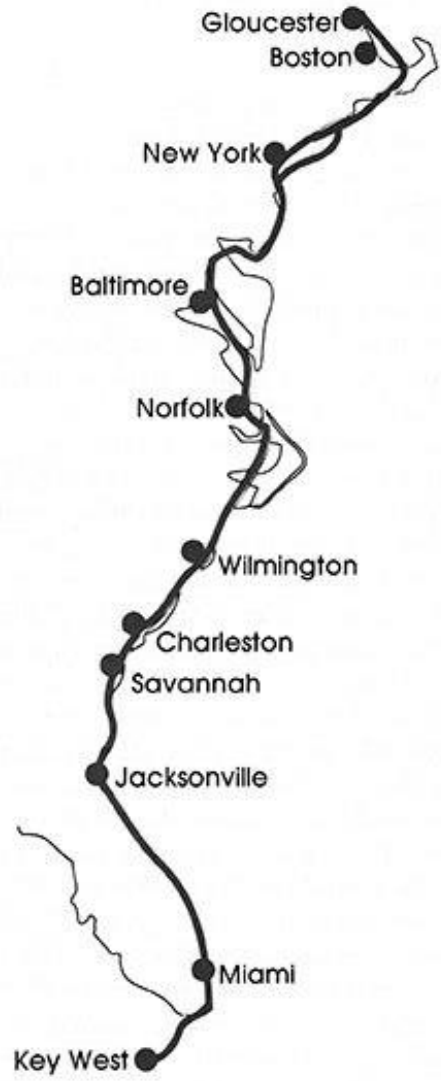


The Intracoastal Waterway

This continuous waterway connects Boston to South Florida.

Composed of natural and man made canals, this passage has offered safe and reliable water travel since it's creation in the early 20th century.

Today, the Intracoastal is heavily trafficked by commercial and recreational vessels, creating an unbroken link between the disparate communities along the eastern coast.





Connection & Direction

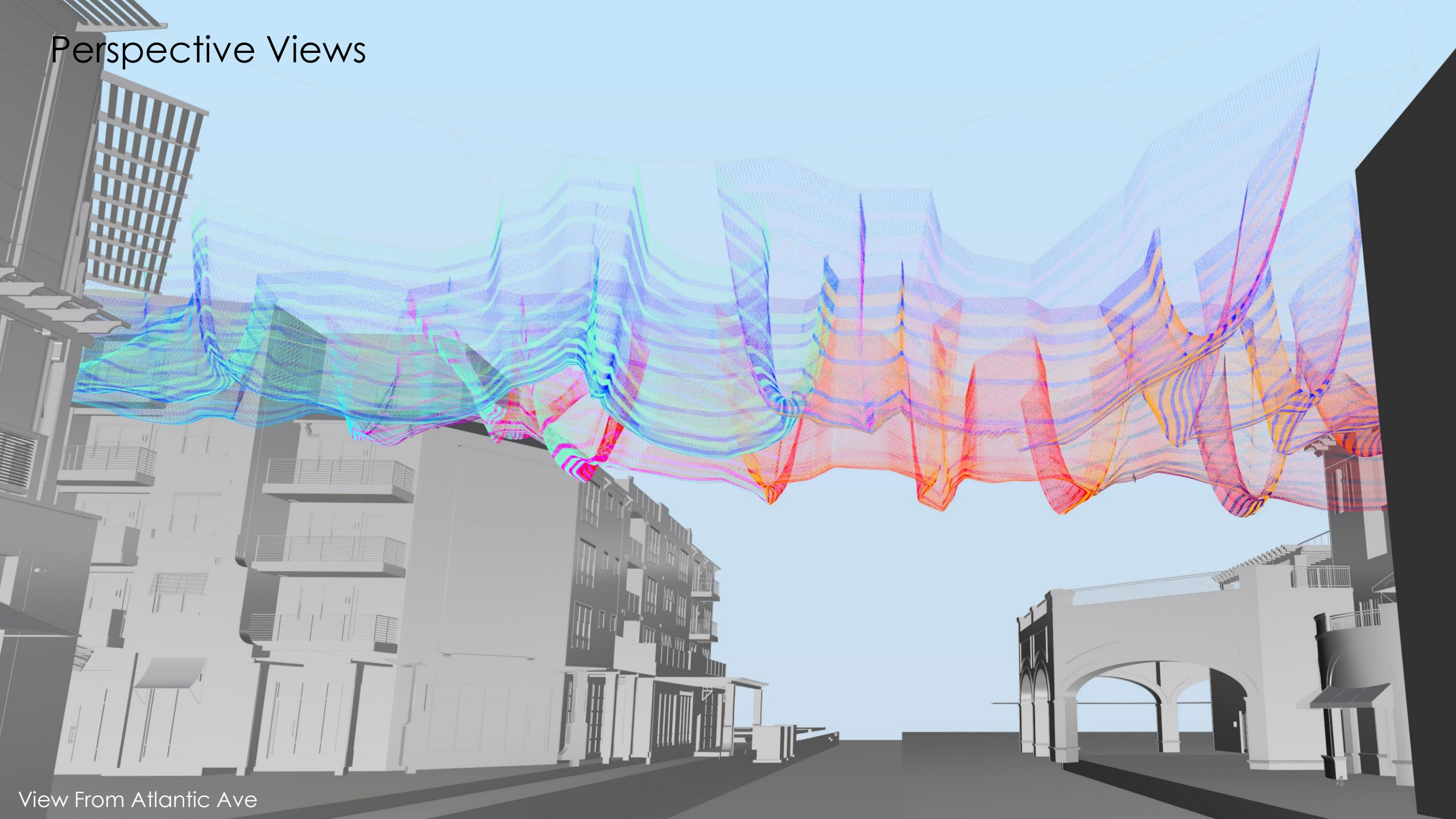
Bridging 4 buildings across an intersection, the sculpture references the linkage of cities like Delray that are touched by the Intracoastal.

As people walk along the 209 foot sculpture, they are directed towards the actual waterway.

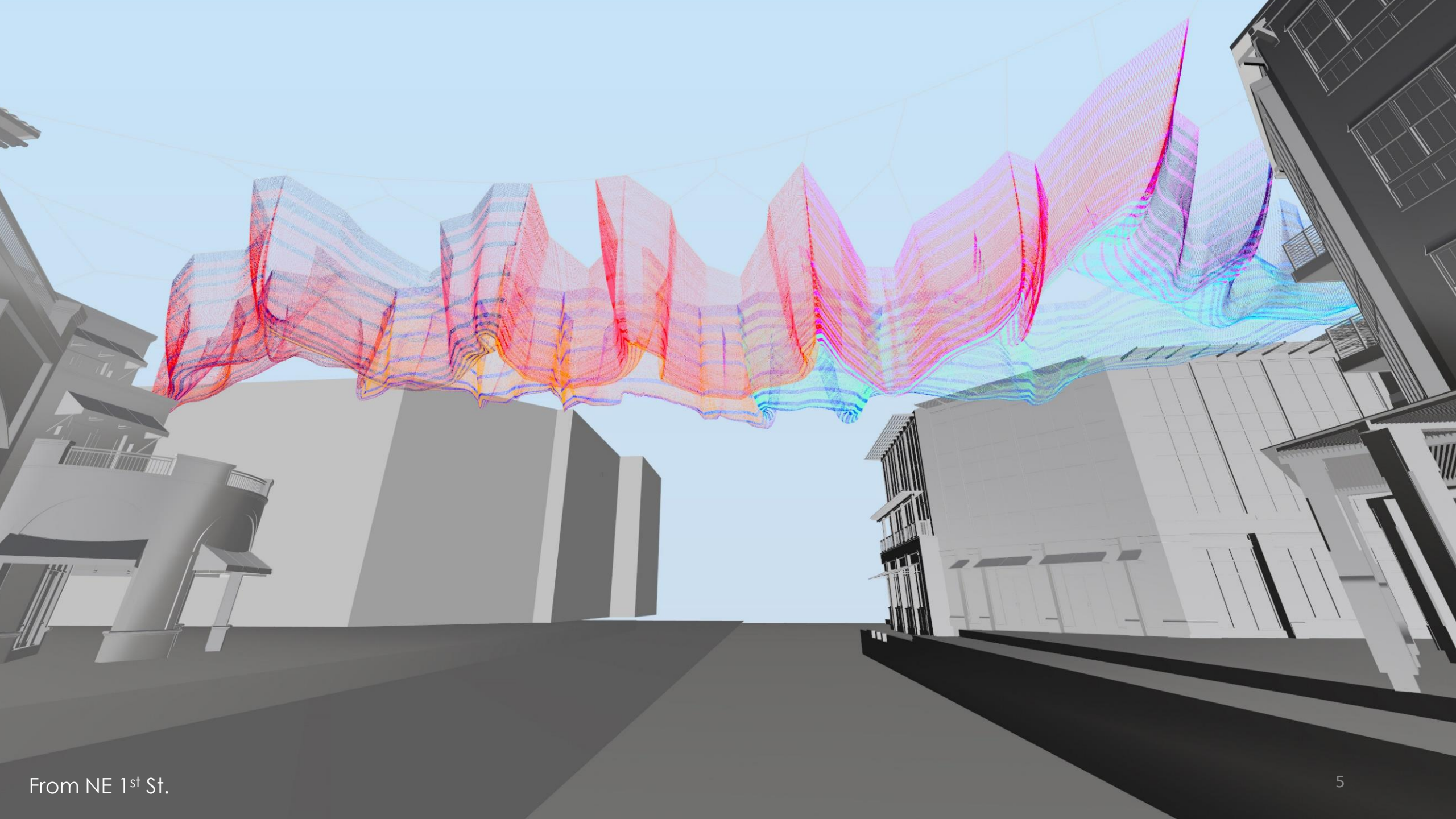
Form & Flow

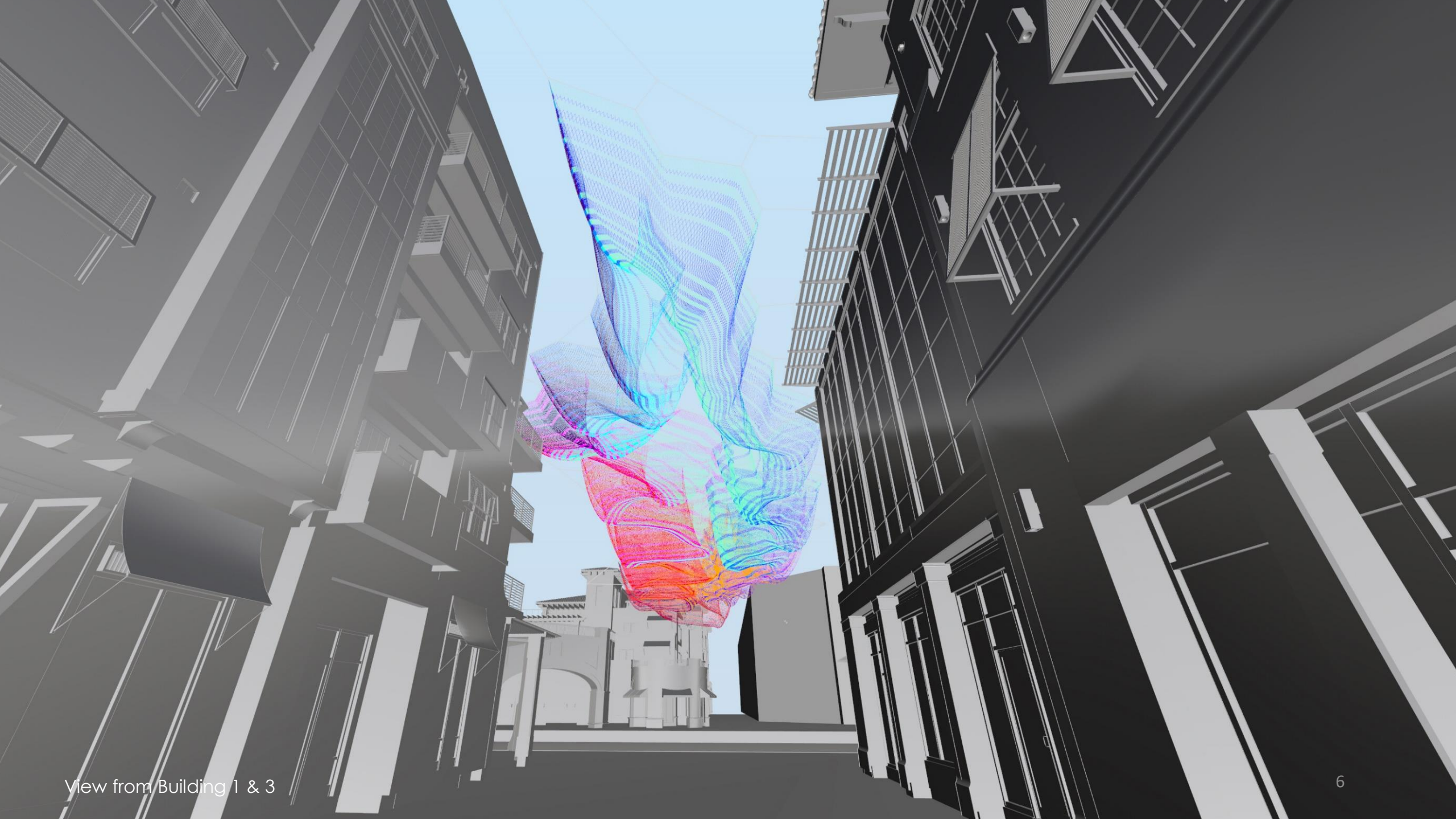
Inspired by the countless inlets, eddies, and diversions of the Intracoastal, the sculpture's form mimics the water.

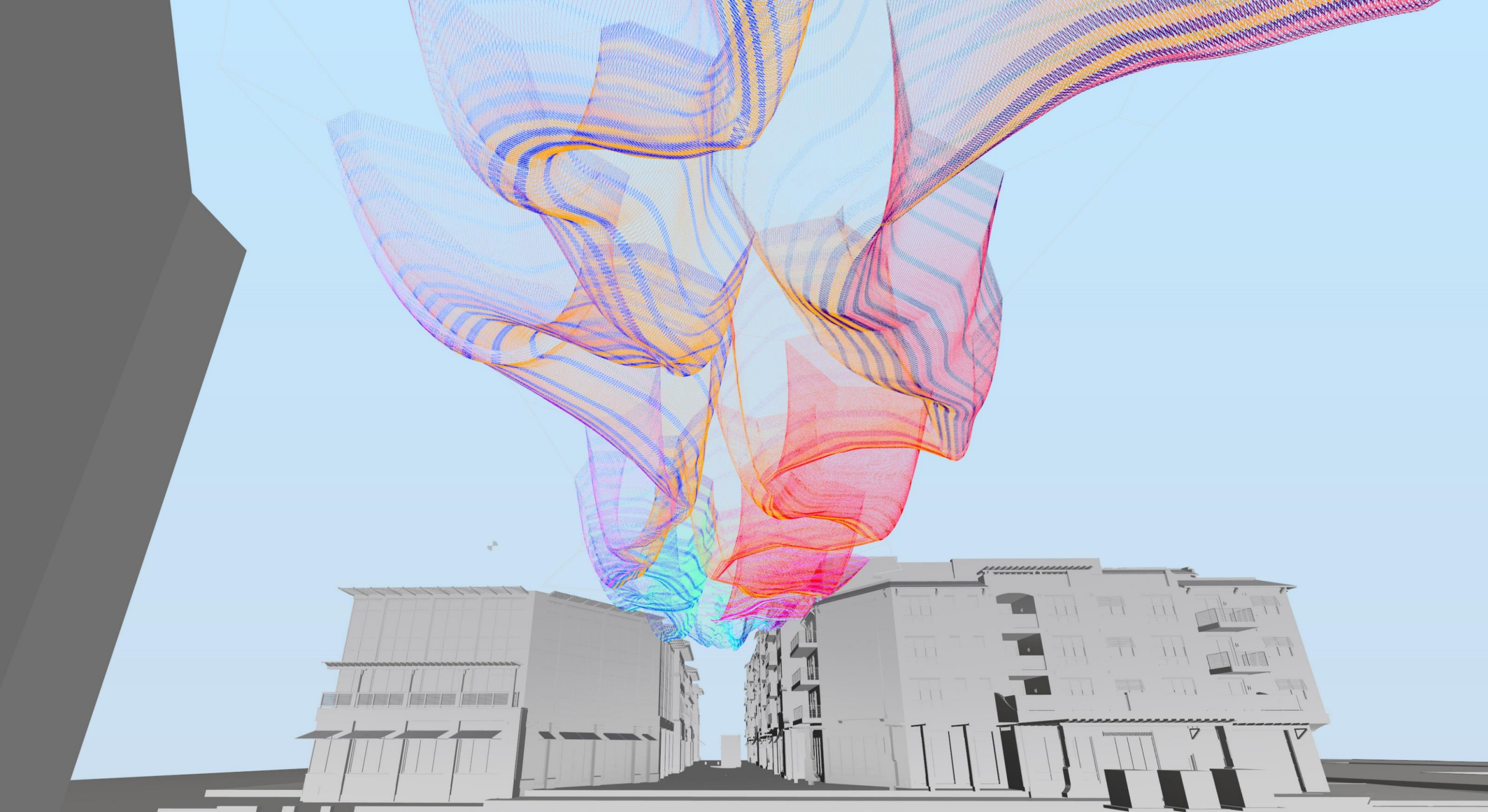
Perspective Views



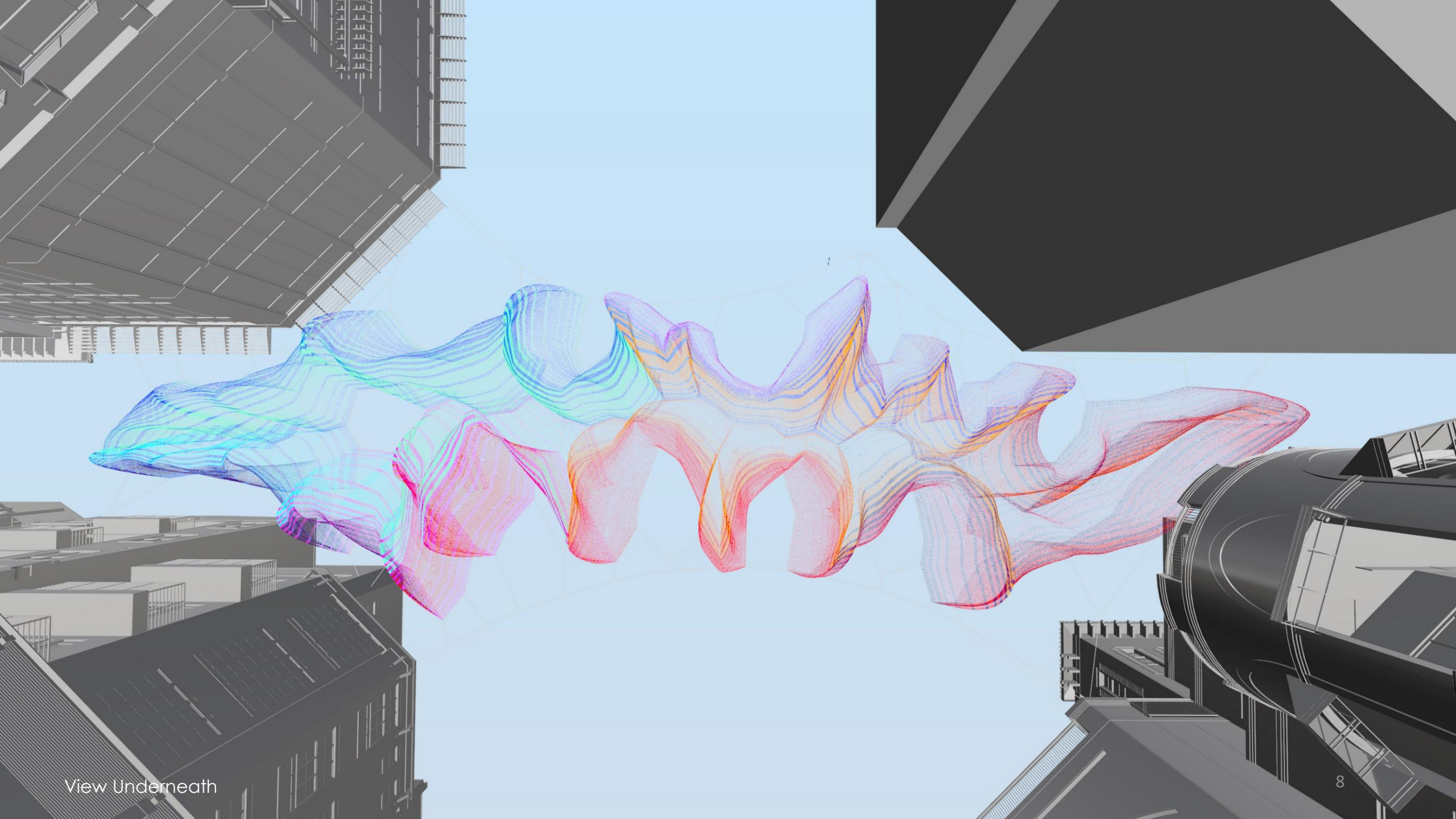
View From Atlantic Ave



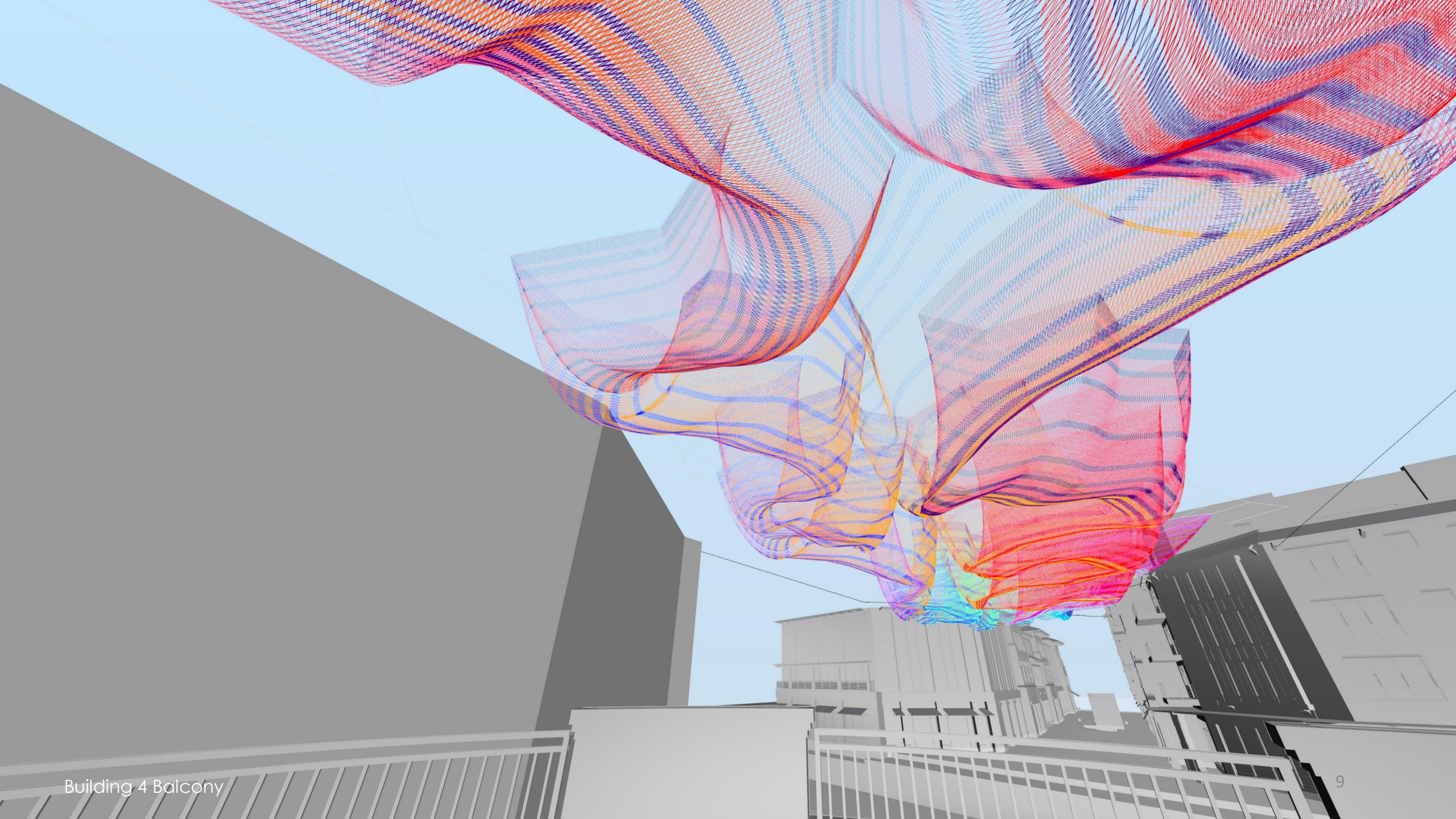


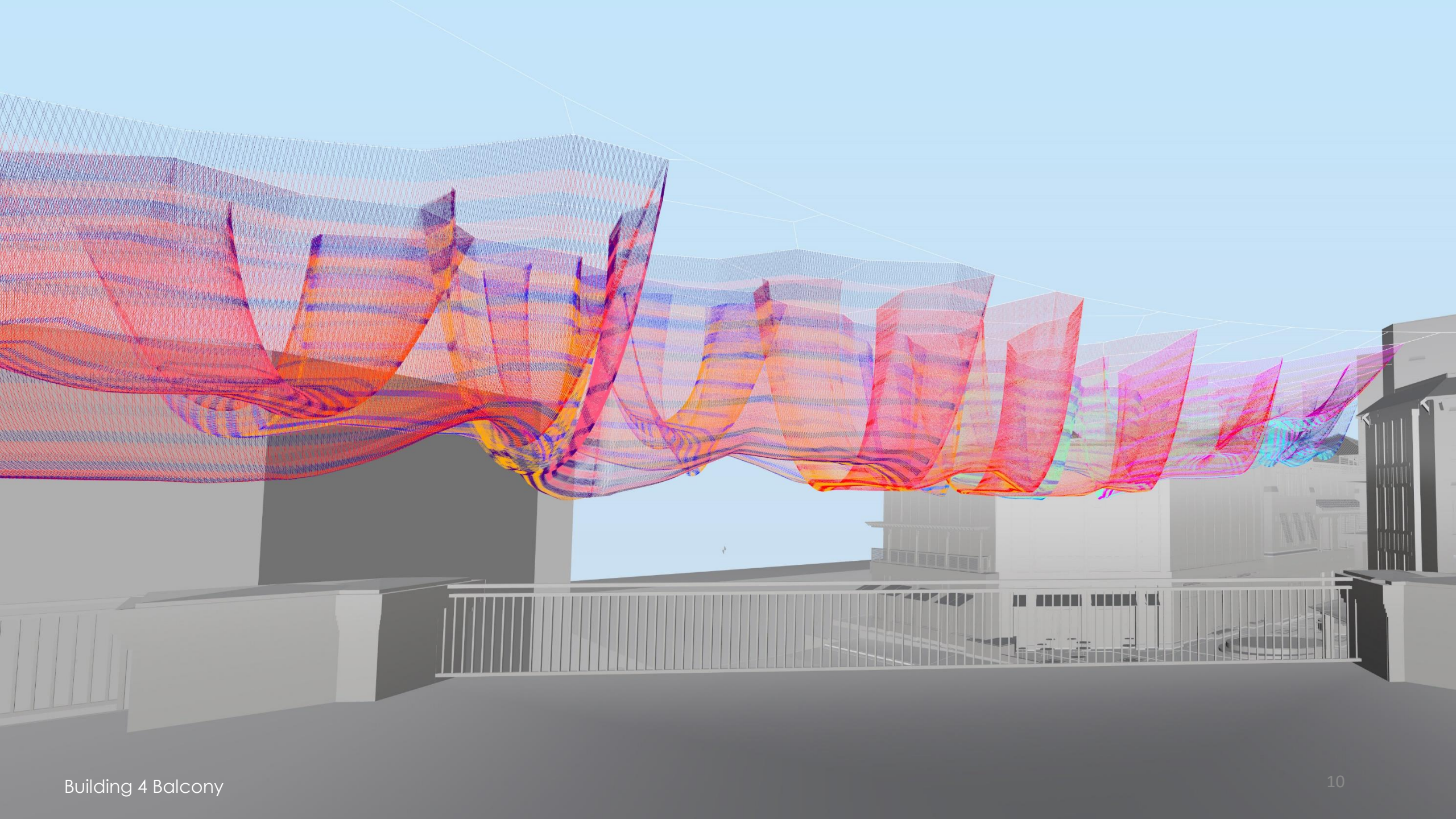


View from Building 2 & 4

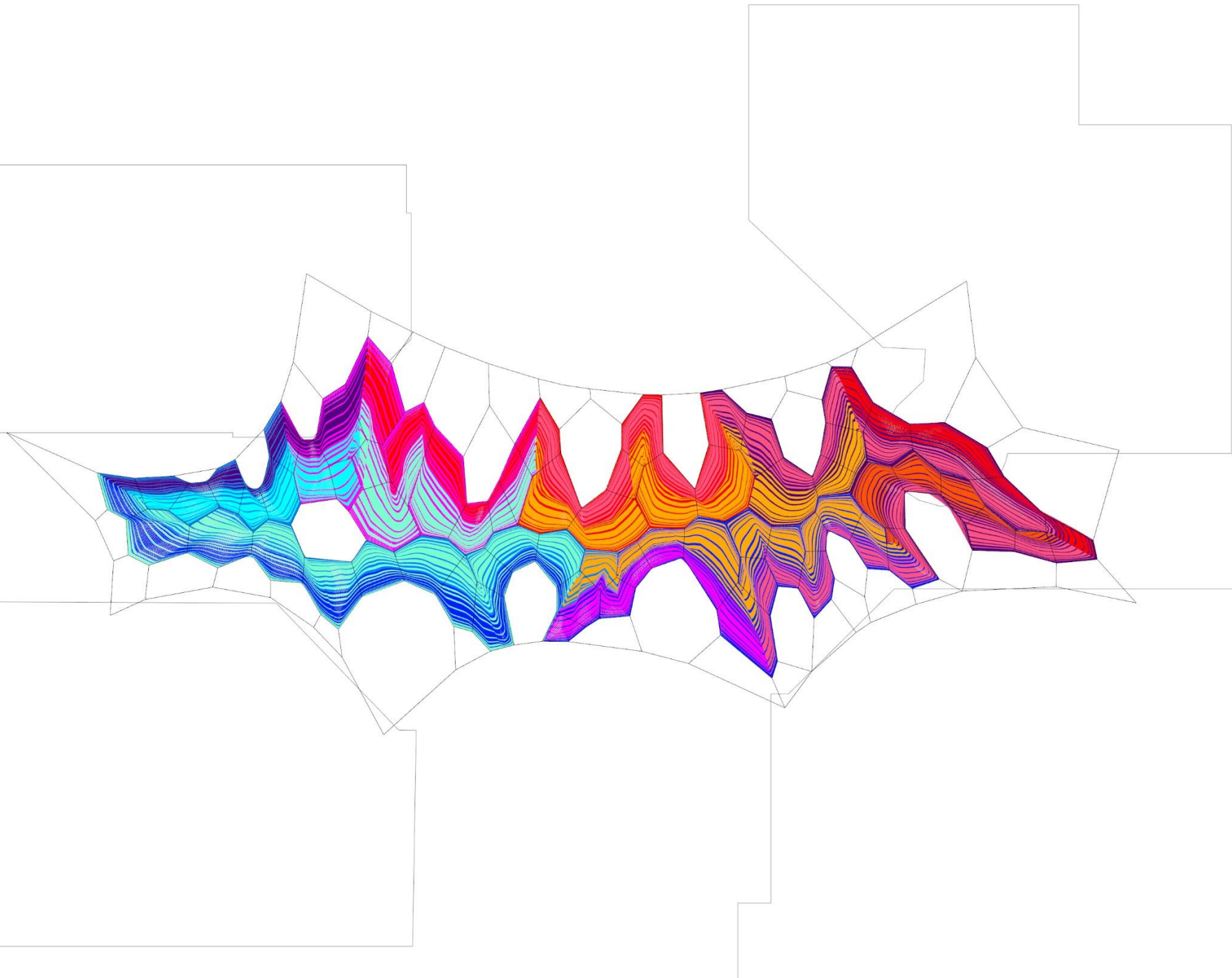


View Underneath

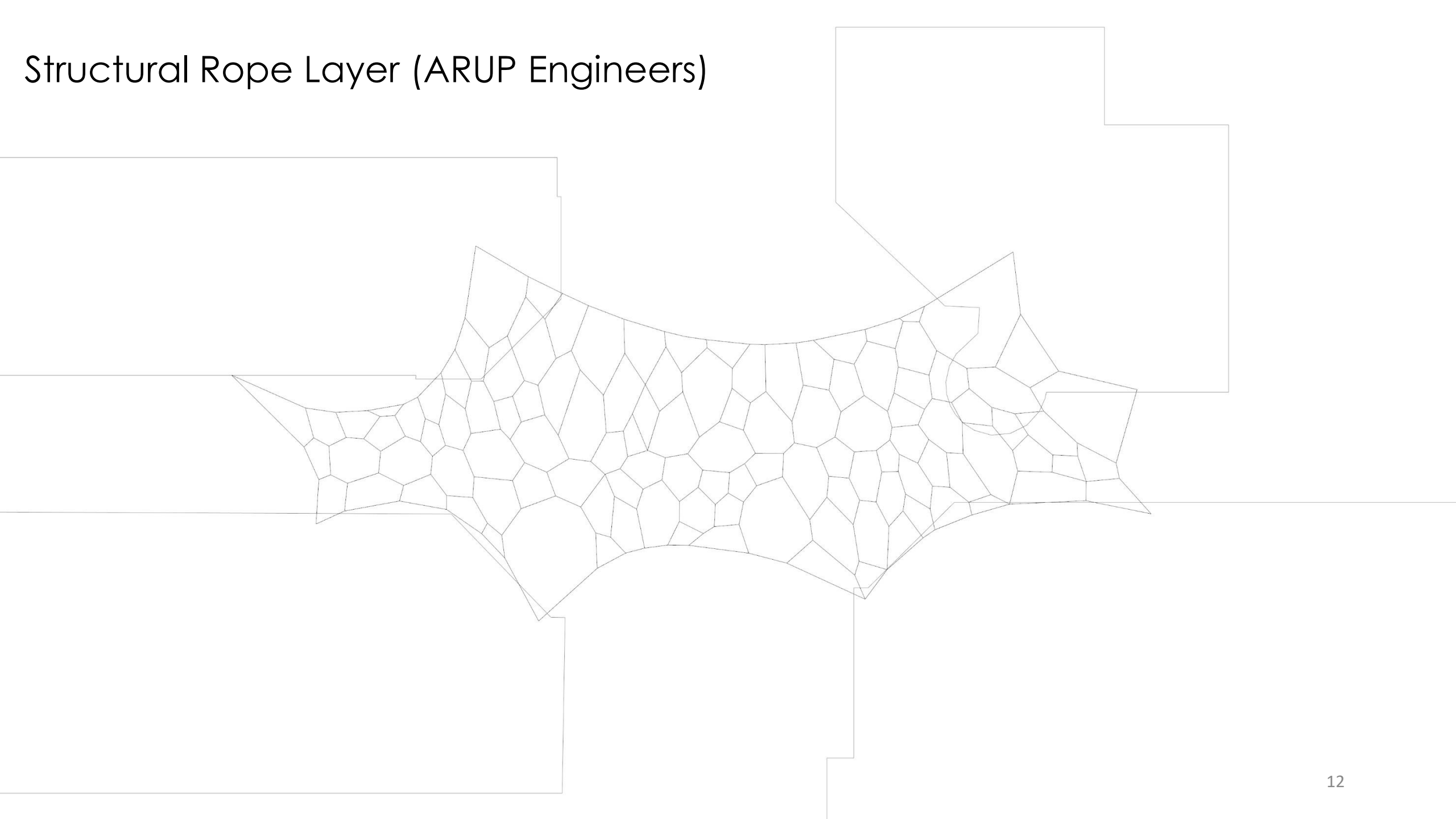




Plan



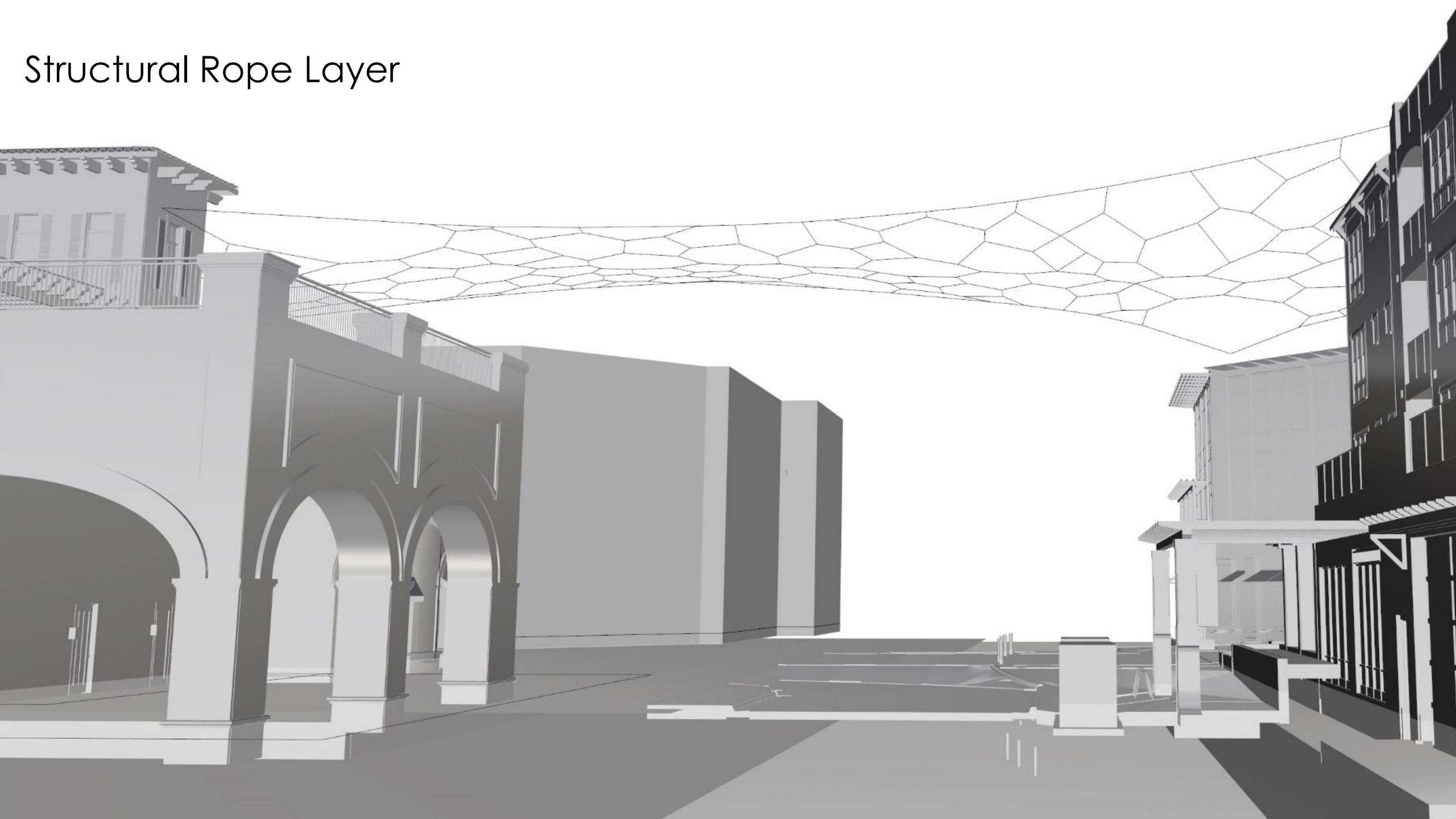
Structural Rope Layer (ARUP Engineers)



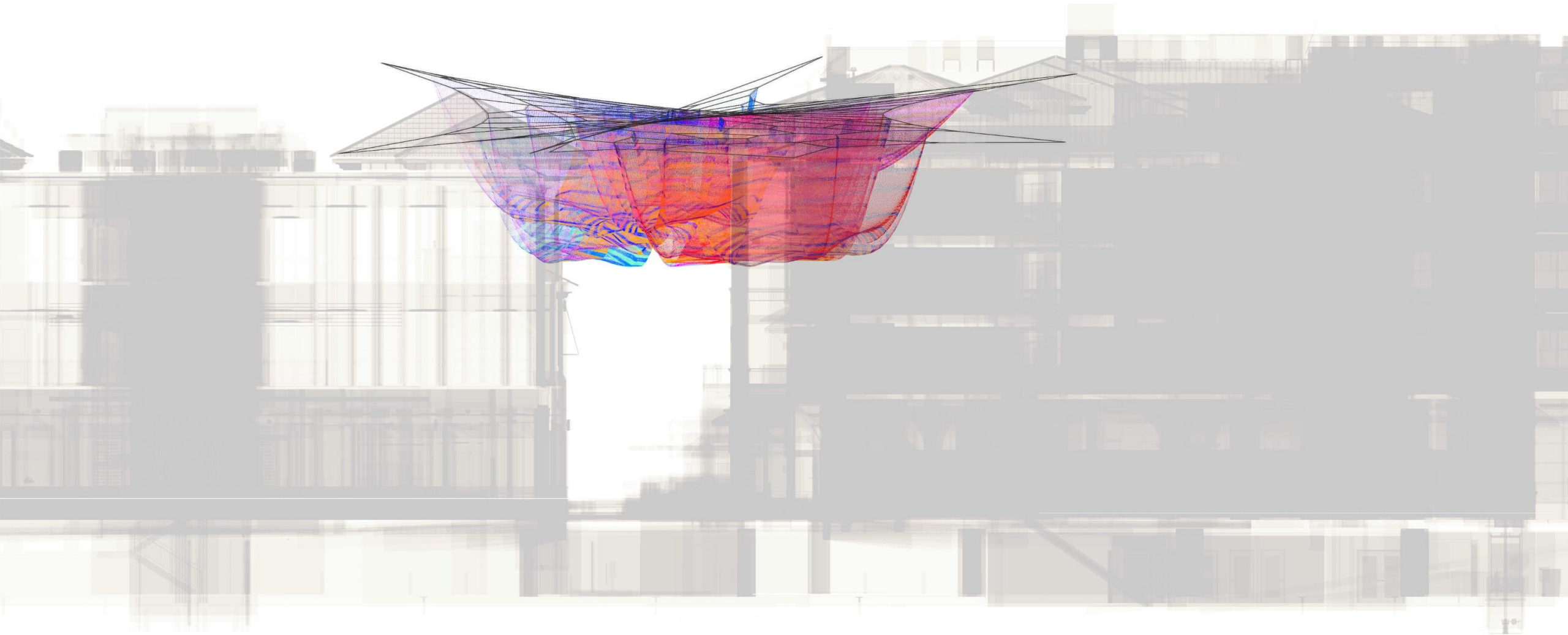
Structural Rope Layer (ARUP Engineers)



Structural Rope Layer



Elevation looking west



Elevation looking north

