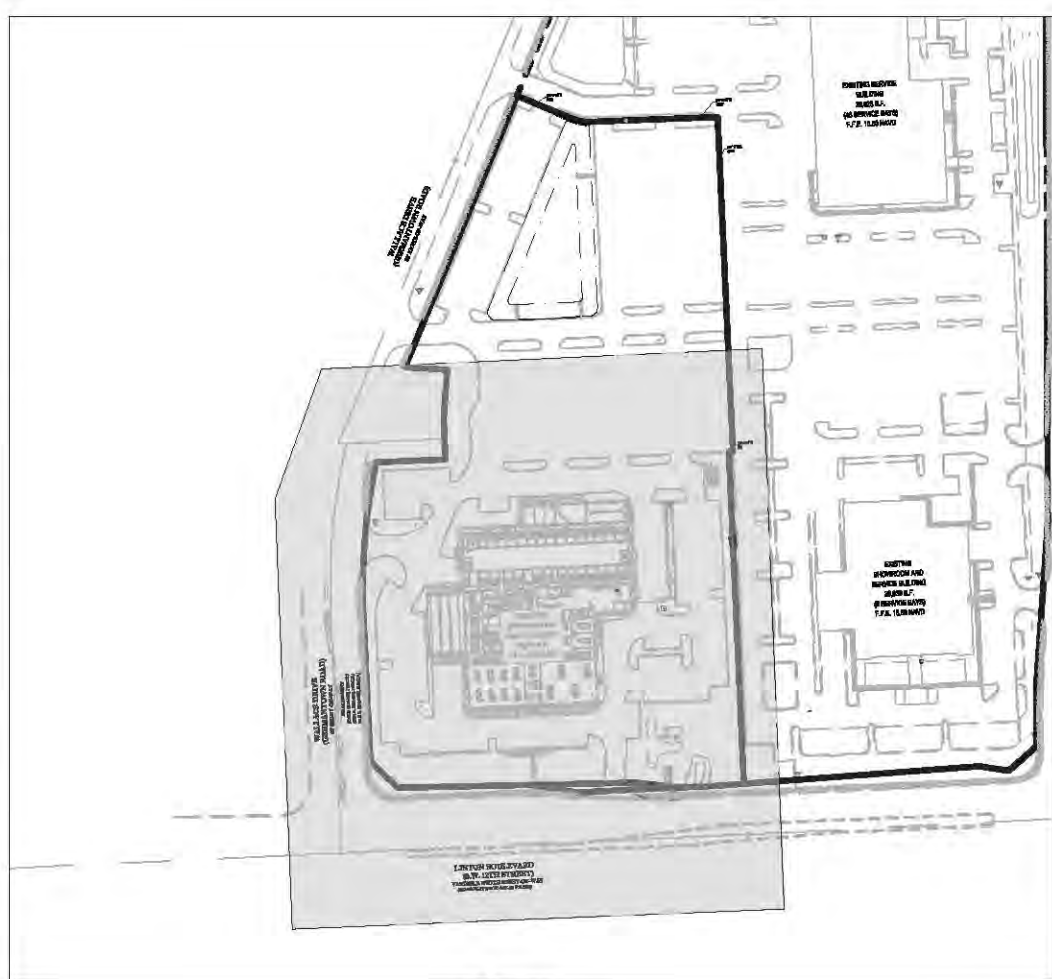
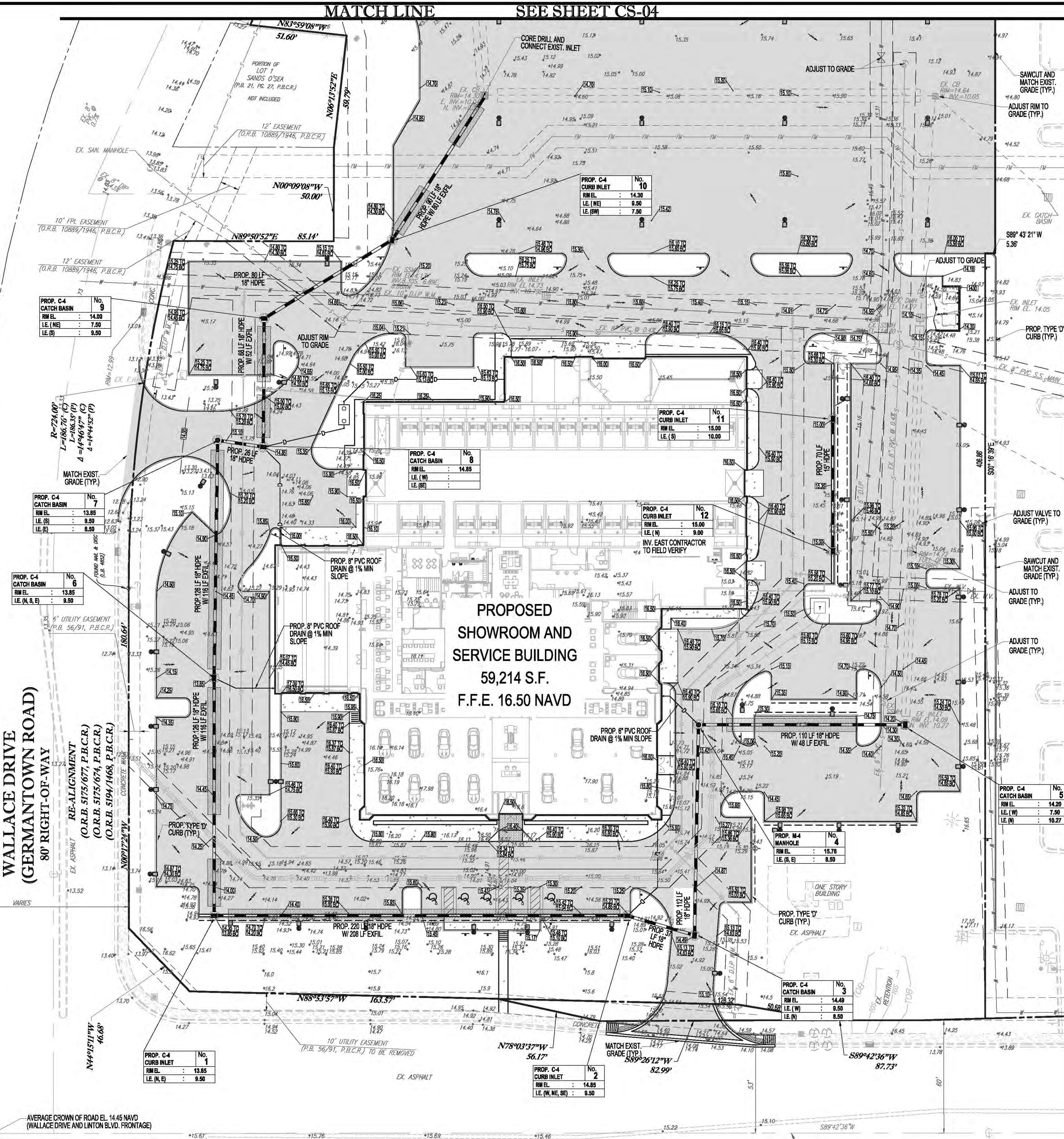


MATCH LINE SEE SHEET CS-04



PAVING, GRADING & DRAINAGE LEGEND	
EXISTING	PROPOSED
—	SANITARY SEWER LATERAL
—	UNDERGROUND WATER LINE
—	UNDERGROUND ELECTRIC LINE
—	OVERHEAD WIRE
—	UNDERGROUND TELEPHONE LINE
—	UNDERGROUND CABLE LINE
—	UNDERGROUND ROOF DRAIN LINE
—	STORM SEWER
—	STORM SEWER EXFILTRATION TRENCH
—	SANITARY SEWER MAIN
—	HYDRANT
—	SANITARY MANHOLE
—	STORM MANHOLE
—	CATCH BASIN
—	GRADE SPOT SHOT

- CONSTRUCTION NOTES:**
- CONTRACTOR TO SAW-CUT AT ALL LOCATIONS OF REMOVAL OF EXISTING CONC. SIDEWALK, CONC. CURB AND ASPHALT UNLESS OTHERWISE NOTED. ALL BASE AND SUBBASE MATERIAL SHALL BE REMOVED WITHIN THE PROPOSED LANDSCAPED AREA.
 - CONTRACTOR TO MATCH EXIST. GRADES AND TO CONSTRUCT A SMOOTH TRANSITION FROM EXISTING FACILITIES TO PROPOSED.
 - CONTRACTOR TO REMOVE ALL CONSTRUCTION DEBRIS FROM CONSTRUCTION SITE AND DISPOSE PER LOCAL ORDINANCES.
 - CONTRACTOR TO ENSURE ALL CONSTRUCTION IS IN ACCORDANCE WITH CITY DESIGN STANDARDS.
 - CONTRACTOR TO SOD ALL DISTURBED AREAS. SODDING INCLUDES MAINTAINING SLOPE AND SOO UNTIL COMPLETION AND ACCEPTANCE OF THE TOTAL PROJECT OR GROWTH IS ESTABLISHED WHICHEVER COMES LAST.
 - ALL EXISTING TRAFFIC SIGNS DISTURBED DURING CONSTRUCTION SHALL BE REINSTALLED WHERE APPLICABLE BY THE CONTRACTOR.
 - THESE PLANS REFLECT CONDITIONS KNOWN DURING PLAN DEVELOPMENT. IN THE EVENT THAT ACTUAL PHYSICAL CONDITIONS PREVENT THE APPLICATION OF THESE STANDARDS OR THE PROGRESSION OF THE WORK, THE CONTRACTOR SHALL NOTIFY THE ENGINEER PRIOR TO CONSTRUCTION OF AFFECTED AREA.
 - THE CONTRACTOR SHALL PROTECT ALL EXISTING STRUCTURES, STORM DRAINS, UTILITIES, AND OTHER FACILITIES TO REMAIN AND SHALL REPAIR ANY DAMAGES DUE TO HIS/HER CONSTRUCTION ACTIVITIES AT NO ADDITIONAL COST TO THE OWNER.
 - NOTIFY SUNSHINE STATE ONE CALL (1-800-432-4770) OR (811) PRIOR TO CONSTRUCTION.
 - PROJECT BASED ON DESIGN SURVEY PREPARED BY OTHERS.
 - THE CONTRACTOR SHALL NOT ENCRACH ONTO PRIVATE PROPERTY WITHOUT EASEMENTS NECESSARY FOR COMPLETION OF THE WORK.
 - THE EXISTING UNDERGROUND UTILITIES SHOWN ARE PER ABOVE GROUND SURVEY DATA AND UTILITY AS-BUILT DATA. THIS INFORMATION DOES NOT WARRANT EXACT SIZE AND LOCATION OF THE UTILITIES. ALSO, THERE MAY BE ADDITIONAL UTILITIES WITHIN THE LIMITS OF CONSTRUCTION THAT MAY BE AFFECTED. CONTRACTOR SHALL BE RESPONSIBLE FOR MAINTAINING AND PROTECTING EXISTING UTILITIES DURING THE COURSE OF CONSTRUCTION.
 - PLEASE SEE MEP PLANS FOR CONTINUATION OF ROOF LEADERS.
 - 2.0% MAXIMUM SLOPE ON HANDICAP SPACES AND ADA ACCESSWAYS.
 - ALL SIDEWALKS SHOULD HAVE A MAXIMUM CROSS SLOPE OF 1.5%.
 - EXISTING COVER MUST BE MAINTAINED ON ALL WATER AND SANITARY LINES.
 - EXISTING SEWER MUST REMAIN FREE FROM CONSTRUCTION DEBRIS AND FLOW MUST BE MAINTAINED.
 - NO STRUCTURES SHALL BE ALLOWED IN UTILITY EASEMENT.
 - SIZE, GRADES, AND LOCATION FOR DRIVEWAY CULVERTS SHALL BE DETERMINED BY THE ENGINEERING DEPT.
 - ALL UNSTABLE MATERIALS SUCH AS MUCK, PEAT, PLASTIC CLAYS, AND/OR MARLS SHALL BE REMOVED FROM ROADBED AREAS. THE AREA SHALL THEN BE BACKFILLED ACCORDING TO THE GEOTECH REPORT.
 - THE SIZE, LENGTH, AND INVERT ELEVATION OF THE PROPOSED DRIVEWAY PIPES AND SWALE LINER ELEVATION WILL BE PROVIDED BY THE CITY OF DELRAY BEACH PUBLIC WORKS.

HATCH LEGEND



ELEVATIONS ARE BASED ON NORTH AMERICAN VERTICAL DATUM (NAVD) OF 1988.

THOMAS ENGINEERING GROUP
CIVIL ENGINEERS - PROJECT MANAGERS - LAND PLANNING - LANDSCAPE ARCHITECTS
6300 NW 31ST AVENUE
FORT LAUDERDALE, FL 33309
PH: (954) 202-7000
FX: (954) 202-7070
WWW.THOMASENGINEERINGGROUP.COM

REVISIONS	
REV.	DATE

811 KNOW WHAT'S BELOW ALWAYS CALL 811 BEFORE YOU DIG
It's fast. It's free. It's the law.
www.callsunshine.com

SPRAB SUBMITTAL

PROJECT No.:	F170121
DRAWN BY:	CAD
CHECKED BY:	MAT
DATE:	06-15-19
CAD I.D.:	F170121-PGD PLAN LRJ

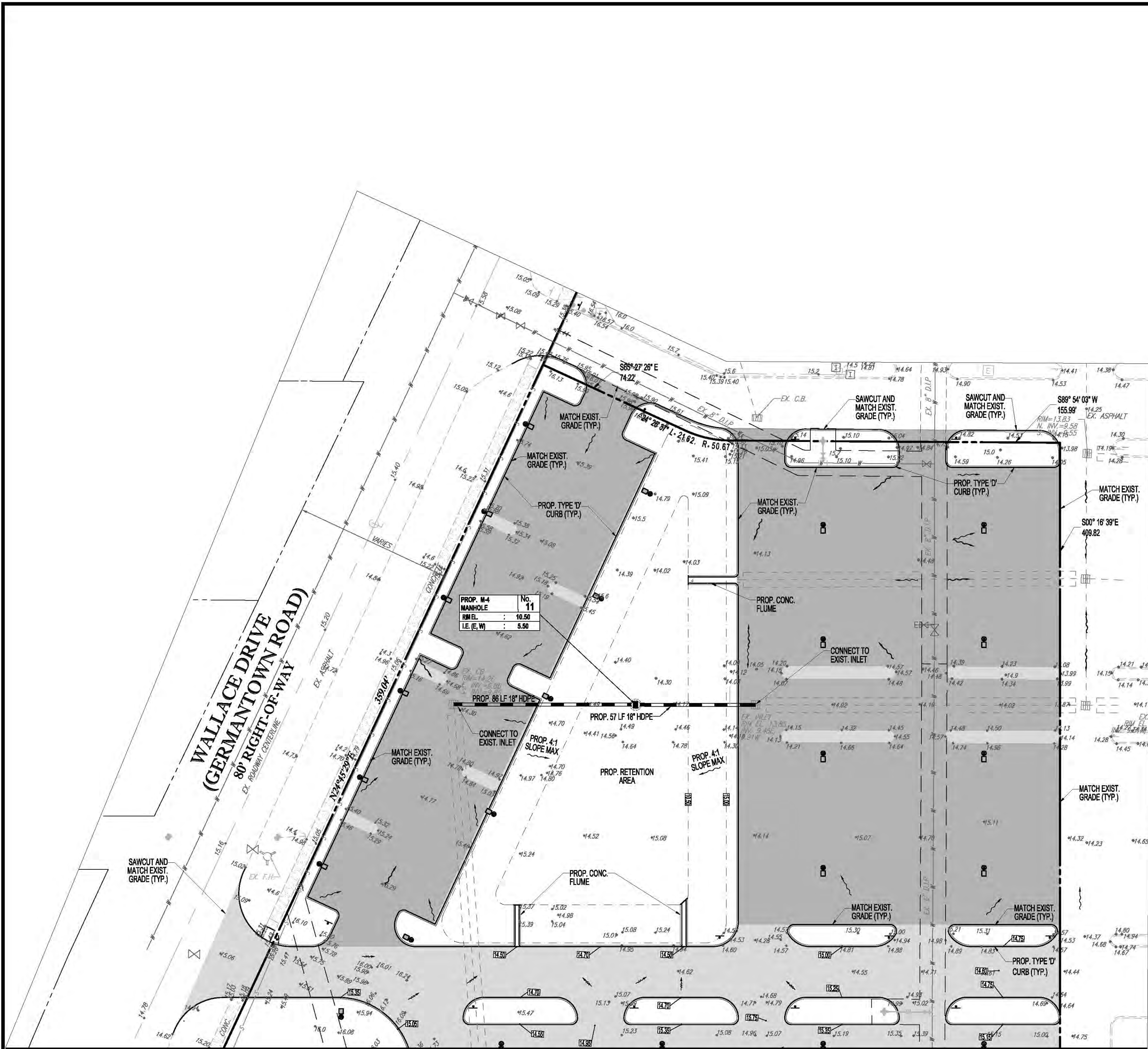
PROJECT:
LAND ROVER/ JAGUAR OF DELRAY BEACH
1111 W. LINTON BLVD.
DELRAY BEACH
FOR
AUTONATION

DELRAY BEACH
FLORIDA

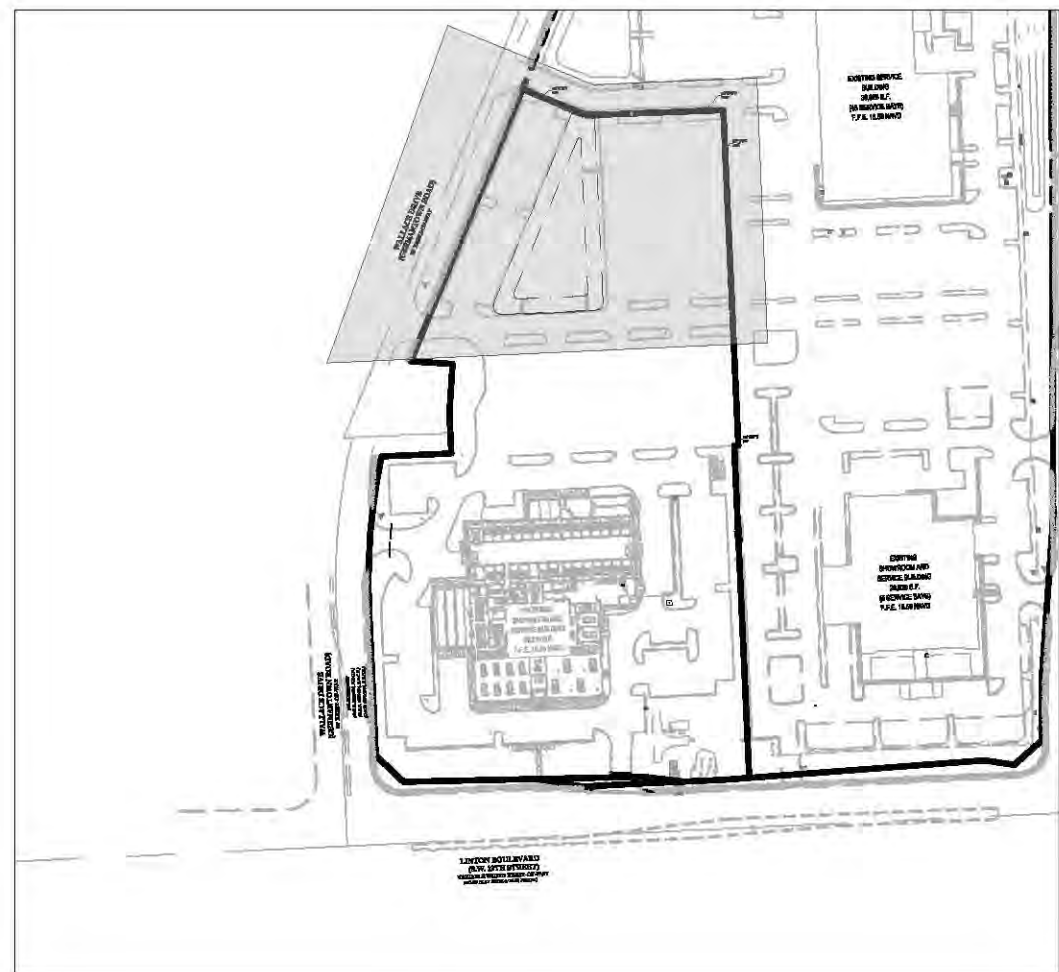
THOMAS ENGINEERING GROUP
6300 NW 31ST AVENUE
FORT LAUDERDALE, FL 33309
PH: (954) 202-7000
FX: (954) 202-7070
WWW.THOMASENGINEERINGGROUP.COM

MICHAEL A. TROXELL
PROFESSIONAL ENGINEER
August 16, 2019
FLORIDA LICENSE No. 56672
FLORIDA BUSINESS CERT. OF AUTH. No. 27528

SHEET TITLE:
PAVING, GRADING & DRAINAGE PLAN
SHEET NUMBER:
CS-03



MATCH LINE SEE SHEET CS-03



KEY

PAVING, GRADING & DRAINAGE LEGEND		
EXISTING		PROPOSED
	SANITARY SEWER	SS
	LATERAL	SL
W	UNDERGROUND WATER LINE	W
E	UNDERGROUND ELECTRIC LINE	E
OH	OVERHEAD WIRE	
T	UNDERGROUND TELEPHONE LINE	
C	UNDERGROUND CABLE LINE	
	UNDERGROUND ROOF DRAIN LINE	D
	STORM SEWER	SS
	STORM SEWER EXFILTRATION TRENCH	SS/T
S	SANITARY SEWER MAIN	S
U	HYDRANT	U
	SANITARY MANHOLE	●
	STORM MANHOLE	○
	CATCH BASIN	■
XX.XX	GRADE SPOT SHOT	SS/20

CONSTRUCTION NOTES:

- CONTRACTOR TO SAW-CUT AT ALL LOCATIONS OF REMOVAL OF EXISTING CONC. SIDEWALK, CONC. CURB AND ASPHALT UNLESS OTHERWISE NOTED. ALL BASE AND SUBBASE MATERIAL SHALL BE REMOVED WITHIN THE PROPOSED LANDSCAPED AREA.
- CONTRACTOR TO MATCH EXIST. GRADES AND TO CONSTRUCT A SMOOTH TRANSITION FROM EXISTING FACILITIES TO PROPOSED.
- CONTRACTOR TO REMOVE ALL CONSTRUCTION DEBRIS FROM CONSTRUCTION SITE AND DISPOSE PER LOCAL ORDINANCES.
- CONTRACTOR TO ENSURE ALL CONSTRUCTION IS IN ACCORDANCE WITH CITY DESIGN STANDARDS.
- CONTRACTOR TO SOD ALL DISTURBED AREAS. SODDING INCLUDES MAINTAINING SLOPE AND SOD UNTIL COMPLETION AND ACCEPTANCE OF THE TOTAL PROJECT OR GROWTH IS ESTABLISHED WHICHEVER COMES LAST.
- ALL EXISTING TRAFFIC SIGNS DISTURBED DURING CONSTRUCTION SHALL BE REINSTALLED WHERE APPLICABLE BY THE CONTRACTOR.
- THESE PLANS REFLECT CONDITIONS KNOWN DURING PLAN DEVELOPMENT. IN THE EVENT THAT ACTUAL PHYSICAL CONDITIONS PREVENT THE APPLICATION OF THESE STANDARDS OR THE PROGRESSION OF THE WORK, THE CONTRACTOR SHALL NOTIFY THE ENGINEER PRIOR TO CONSTRUCTION OF AFFECTED AREA.
- THE CONTRACTOR SHALL PROTECT ALL EXISTING STRUCTURES, STORM DRAINS, UTILITIES, AND OTHER FACILITIES TO REMAIN AND SHALL REPAIR ANY DAMAGES DUE TO HIS/HER CONSTRUCTION ACTIVITIES AT NO ADDITIONAL COST TO THE OWNER.
- NOTIFY SUNSHINE STATE ONE CALL (1-800-432-4770) OR (811) PRIOR TO CONSTRUCTION.
- PROJECT BASED ON DESIGN SURVEY PREPARED BY OTHERS.
- THE CONTRACTOR SHALL NOT ENCROACH ONTO PRIVATE PROPERTY WITHOUT EASEMENTS NECESSARY FOR COMPLETION OF THE WORK.
- THE EXISTING UNDERGROUND UTILITIES SHOWN ARE PER ABOVE GROUND SURVEY DATA AND UTILITY AS-BUILT DATA. THIS INFORMATION DOES NOT WARRANT EXACT SIZE AND LOCATION OF THE UTILITIES. ALSO, THERE MAY BE ADDITIONAL UTILITIES WITHIN THE LIMITS OF CONSTRUCTION THAT MAY BE AFFECTED. CONTRACTOR SHALL BE RESPONSIBLE FOR MAINTAINING AND PROTECTING EXISTING UTILITIES DURING THE COURSE OF CONSTRUCTION.
- PLEASE SEE MEP PLANS FOR CONTINUATION OF ROOF LEADERS.
- 2.0% MAXIMUM SLOPE ON HANDICAP SPACES AND ADA ACCESS WAYS.
- ALL SIDEWALKS SHOULD HAVE A MAXIMUM CROSS SLOPE OF 1.5%.
- EXISTING COVER MUST BE MAINTAINED ON ALL WATER AND SANITARY LINES.
- EXISTING SEWER MUST REMAIN FREE FROM CONSTRUCTION DEBRIS AND FLOW MUST BE MAINTAINED.
- NO STRUCTURES SHALL BE ALLOWED IN UTILITY EASEMENT.
- SIZE, GRADES, AND LOCATION FOR DRIVEWAY CULVERTS SHALL BE DETERMINED BY THE ENGINEERING DEPT.
- ALL UNSTABLE MATERIALS SUCH AS MUCK, PEAT, PLASTIC CLAYS, AND/OR MARLS SHALL BE REMOVED FROM ROADBED AREAS. THE AREA SHALL THEN BE BACKFILLED ACCORDING TO THE GEOTECH REPORT.
- THE SIZE, LENGTH, AND INVERT ELEVATION OF THE PROPOSED DRIVEWAY PIPES AND SWALE LINER ELEVATION WILL BE PROVIDED BY THE CITY OF DELRAY BEACH PUBLIC WORKS.

HATCH LEGEND



ELEVATIONS ARE BASED ON NORTH AMERICAN VERTICAL DATUM (NAVD) OF 1988.

THOMAS
ENGINEERING GROUP
CIVIL ENGINEERS - PROJECT MANAGERS - LAND PLANNING - LANDSCAPE ARCHITECTS
6800 NW 31ST AVENUE
FORT LAUDERDALE, FL 33309
PH: (954) 202-7000
FX: (954) 202-7070
WWW.THOMASENGINEERINGGROUP.COM
4860 W. KENNEDY BLVD.
SUITE 200
JUPITER, FL 33458
PH: 561-203-7503
P: 813-379-1100

REVISIONS			
REV.	DATE	COMMENT	BY

811 KNOW WHAT'S BELOW
ALWAYS CALL 811
BEFORE YOU DIG
It's fast. It's free. It's the law.
www.callsunshine.com

SPRAB SUBMITTAL

PROJECT No.: F170121
DRAWN BY: CAD
CHECKED BY: MAT
DATE: 06-15-19
CAD I.D.: F170121-PGD PLAN LRJ

PROJECT:
**LAND ROVER/ JAGUAR
OF DELRAY BEACH
1111 W. LINTON BLVD.
DELRAY BEACH**
FOR
AUTONATION

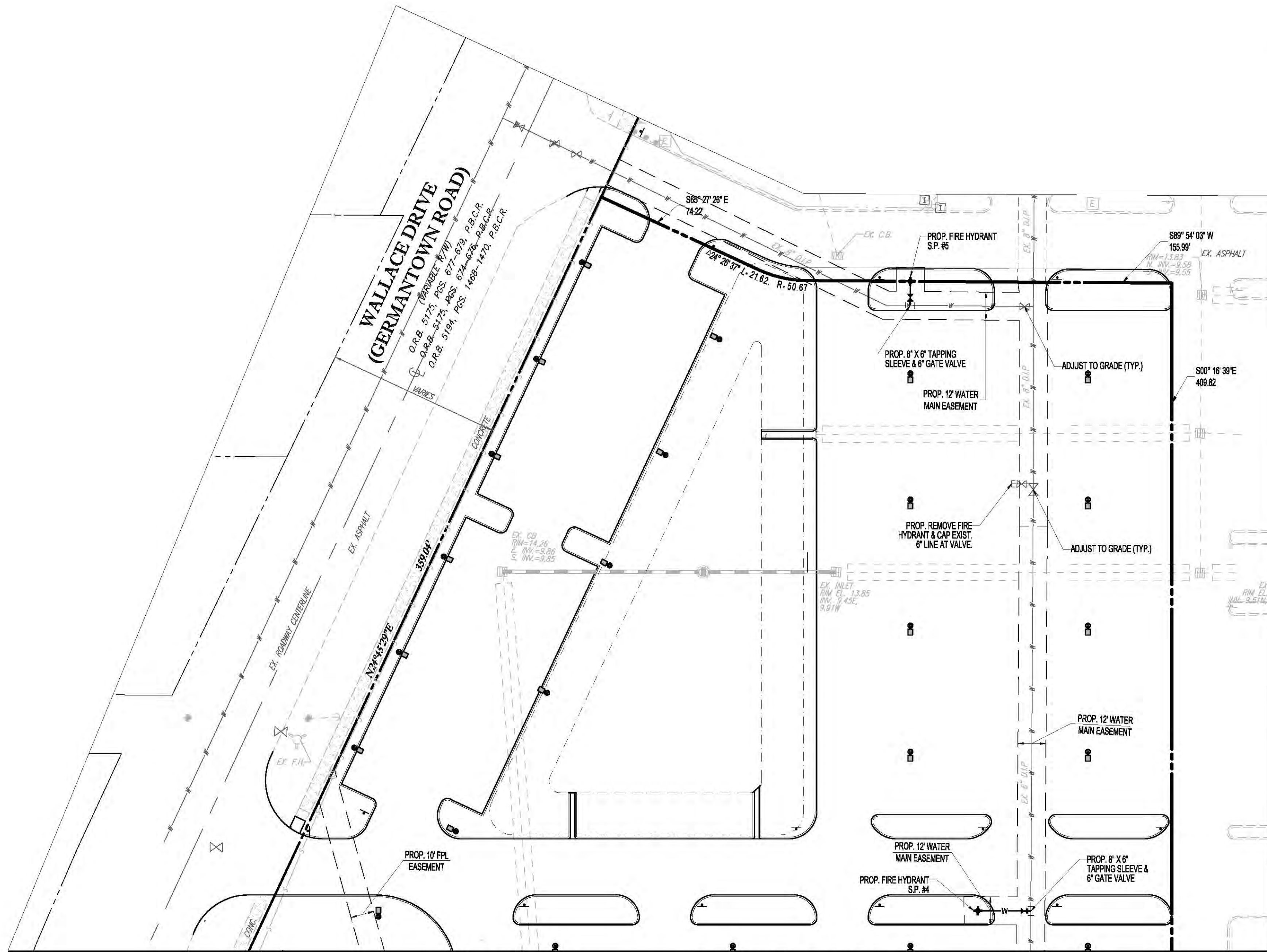
DELRAY BEACH
FLORIDA

THOMAS
ENGINEERING GROUP
6800 NW 31ST AVENUE
FORT LAUDERDALE, FL 33309
PH: (954) 202-7000
FX: (954) 202-7070
WWW.THOMASENGINEERINGGROUP.COM

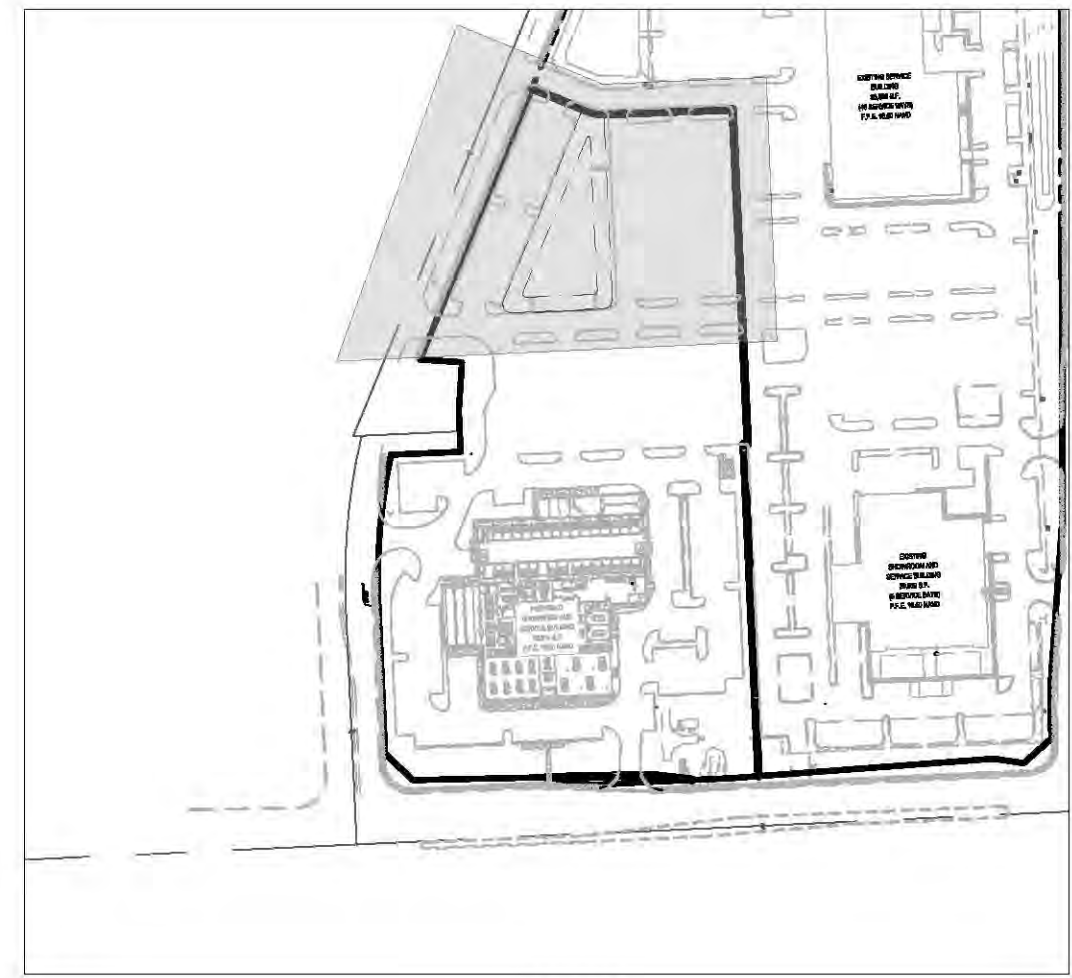
MICHAEL A. TROXELL
PROFESSIONAL ENGINEER
August 16, 2019
FLORIDA LICENSE No. 52672
FLORIDA BUSINESS CERT. OF AUTH. No. 27528

SHEET TITLE:
**PAVING, GRADING &
DRAINAGE PLAN**

SHEET NUMBER:
CS-04



MATCH LINE SEE SHEET CS-06



KEY



UTILITY LEGEND

EXISTING NOTE	TYPICAL NOTE TEXT	PROPOSED NOTE
—S—S—S—	SANITARY SEWER LATERAL	—SL—SL—
—W—W—W—	UNDERGROUND WATER LINE	—W—F—W—
—E—E—E—	UNDERGROUND ELECTRIC LINE	—E—TEL—E—
—F—F—F—	UNDERGROUND FIRE LINE	—F—F—F—
—G—G—G—	UNDERGROUND GAS LINE	—G—G—G—
—OW—OW—OW—	OVERHEAD WIRE	—OW—OW—OW—
—T—T—T—	UNDERGROUND TELEPHONE LINE	—TEL—TEL—TEL—
—C—C—C—	UNDERGROUND CABLE LINE	—C—TEL—C—
---	STORM SEWER	---
—S—S—S—	SANITARY SEWER MAIN	—S—S—S—
+	HYDRANT	+
⊙	SANITARY MANHOLE	⊙
⊙	STORM MANHOLE	⊙
⊙	CATCH BASIN	⊙
⊙	YARD INLET	⊙
X	WATER VALVE	X
Z	BACKFLOW PREVENTER	Z
⊙	WATER METER	⊙
○	CLEAN OUT	○

- NOTES
- CONTRACTOR IS RESPONSIBLE FOR FIELD VERIFYING ALL EXISTING SITE IMPROVEMENTS AND UTILITIES. ALL DISCREPANCIES SHALL BE IDENTIFIED TO THE ENGINEER IN WRITING.
 - ALL EXISTING UTILITIES SHALL BE REMOVED BY CONTRACTOR IN ACCORDANCE WITH CITY OF DELRAY BEACH AND LOCAL UTILITY COMPANY REQUIREMENTS.
 - ALL DEMOLITION DEBRIS TO BE REMOVED BY CONTRACTOR IN ACCORDANCE WITH ALL APPLICABLE REGULATIONS.
 - ALL HYDRANTS SHALL FALL WITHIN 4' OF THE CURB.
 - MINIMUM 7.5' CLEARANCE AROUND THE HYDRANT CIRCUMFERENCE. THE 4 1/2" CAP SHALL FACE THE ROADWAY.
 - ALL FIRE HYDRANTS SHOULD HAVE BLUE REFLECTIVE MARKERS.
 - WATER SHALL BE ON SITE BEFORE CONSTRUCTION BEGINS.
 - CLEAN OUTS INSTALLED IN ASPHALT MUST BE INSTALLED IN A CITY BOX MARKED SEWER.
 - ANY TREES OR SHRUBS PLACED WITHIN WATER, SEWER OR DRAINAGE EASEMENTS SHALL CONFORM TO THE CITY OF DELRAY BEACH STANDARD DETAILS; LD 1.1 & LD 1.2.
 - NO PROPOSED IMPROVEMENTS, BUILDINGS OR ANY KIND OF CONSTRUCTION CAN BE PLACED ON OR WITHIN ANY WATER, SEWER OR DRAINAGE EASEMENTS, UNLESS APPROVED BY THE CITY OF DELRAY BEACH CITY ENGINEER.
 - NO PROPOSED STRUCTURES SHALL BE INSTALLED WITHIN A HORIZONTAL DISTANCE OF 10-FEET FROM ANY EXISTING OR PROPOSED WATER, SEWER OR DRAINAGE FACILITIES, UNLESS APPROVED BY THE CITY OF DELRAY BEACH CITY ENGINEER.
 - WATER METER SIZES SHALL BE DESIGNED BY ENGINEER OF RECORD AND SHALL BE CHECKED AND AUTHORIZED BY CITY OF DELRAY BEACH UTILITIES DIVISION.
 - ALL NEW CONNECTIONS TO THE EXISTING WATER MAIN SHALL BE CUT-IN.

THOMAS
ENGINEERING GROUP
CIVIL ENGINEERS - PROJECT MANAGERS - LAND PLANNING - LANDSCAPE ARCHITECTS

6300 NW 31ST AVENUE
FORT LAUDERDALE, FL 33309
PH: (954) 202-7000
FX: (954) 202-7070
WWW.THOMASENGINEERINGGROUP.COM

4850 W. KENNEDY BLVD.
SUITE 200
JUPITER, FL 33458
PH: (561) 339-9999
P: 561-303-7503

225 W INDIANTOWN RD
JUPITER, FL 33458
PH: (561) 339-9999
P: 561-303-7503

THE INFORMATION, DESIGN AND CONTENT OF THIS PLAN AND INSTRUMENTS SHALL BE USED IN CONJUNCTION WITH ANY PREVIOUS WHATEVER PROJECT. ANY REVISIONS TO THIS PLAN SHALL BE INDICATED BY A REVISION TABLE. ONLY APPROVED CHANGES AND SCALE SHALL BE USED FOR CONSTRUCTION.

REVISIONS			
REV.	DATE	COMMENT	BY

811 KNOW WHAT'S BELOW
ALWAYS CALL 811
BEFORE YOU DIG
It's fast. It's free. It's the law.
www.callsunshine.com

SPRAB SUBMITTAL

PROJECT No.:	F170121
DRAWN BY:	CAD
CHECKED BY:	MAT
DATE:	06-18-19
CAD I.D.:	F170121-UTILITY PLAN LRJ

PROJECT:
**LAND ROVER/ JAGUAR
OF DELRAY BEACH
1111 W. LINTON BLVD.
DELRAY BEACH**
FOR
AUTONATION

DELRAY BEACH
FLORIDA

THOMAS
ENGINEERING GROUP

6300 NW 31ST AVENUE
FORT LAUDERDALE, FL 33309
PH: (954) 202-7000
FX: (954) 202-7070
WWW.THOMASENGINEERINGGROUP.COM

MICHAEL A. TROXELL
PROFESSIONAL ENGINEER
August 16, 2019
FLORIDA LICENSE No. 50672
FLORIDA BUSINESS CERT. OF AUTH. No. 27528

SHEET TITLE:
**WATER, SEWER AND
UTILITY PLAN**
SHEET NUMBER:
CS-07



HOMAS
ENGINEERING GROUP

CIVIL ENGINEERS • PROJECT MANAGERS • LAND PLANNING • LANDSCAPE ARCHITECTS

1530 NW 31ST AVENUE
TAMPA, FL 33609
P: 850-202-7000
F: 813-379-4100

4950 W. KENNEDY BLVD.
TAMPA, FL 33609
P: 813-379-4100

125 W. INDIANTOWN RD.
JUPITER, FL 33458
P: 561-230-7505

WE SERVE THE ENTIRE COUNTRY OF FLORIDA AND THE NEIGHBORING STATES OF ALABAMA, ARIZONA, CALIFORNIA, GEORGIA, LOUISIANA, MISSISSIPPI, NORTH CAROLINA, SOUTH CAROLINA, TEXAS, VIRGINIA, AND WEST VIRGINIA. WE OFFER A FULL RANGE OF SERVICES TO OUR CLIENTS.

© 2011 HOMAS ENGINEERING GROUP, LLC

[illegible]

SPRAB SUBMITTAL

PROJECT No.:	F170121
DRAWN BY:	CAD
CHECKED BY:	MAT
DATE:	08-16-19
CAD I.D.:	F170121-UTILITY COMPOSITE

PROJECT:

**LAND ROVER/ JAGUAR
OF DELRAY BEACH
1111 W. LINTON BLVD.
DELRAY BEACH**

— FOR —

AUTONATION

DELRAY BEACH
FLORIDA



MICHAEL A. TROXELL

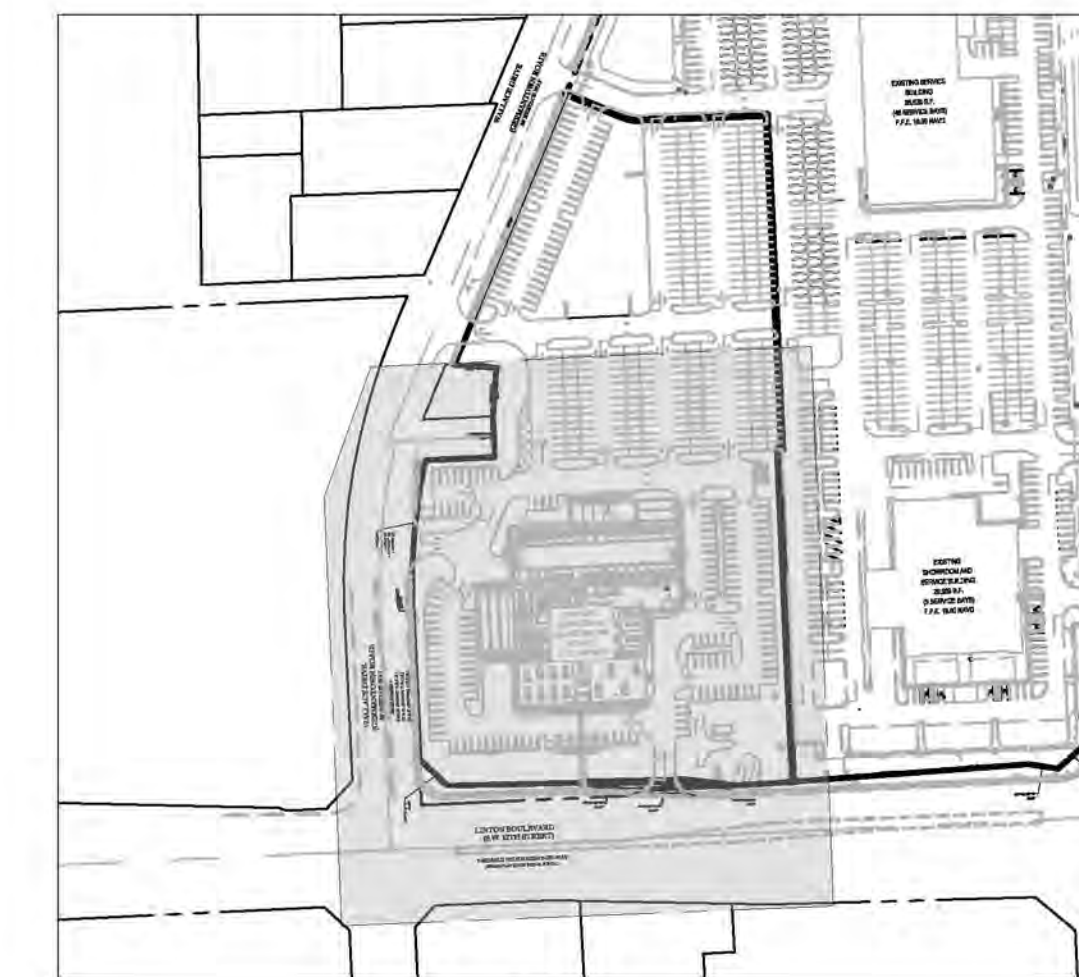
PROFESSIONAL ENGINEER
August 18, 2019
FLORIDA LICENSE No. 50572
FLORIDA BUSINESS CERT. OF AUTH. No. 27528

SHEET TITLE:

COMPOSITE PLAN

SHEET NUMBER:

CS-10



Luminaire Schedule						
Symbol	Qty	Label	Arrangement	Lum. Watts	LLF	Description
	2	AF	SINGLE	423	1.300	RSX4 LED P4 50K AFR
	4	R4F	SINGLE	423	1.300	RSX4 LED P4 50K R4
	5	R4a	SINGLE	311.9213	1.000	RSX3 LED P4 50K R4
	11	R3	SINGLE	149.9762	1.000	RSX2 LED P3 50K R3
	30	R5	SINGLE	311.9213	1.000	RSX3 LED P4 50K R5
	15	W1	SINGLE	49	1.000	KAXW LED P2 50K R4 MVOLT
	9	AFa	SINGLE	311.9213	1.000	RSX3 LED P4 50K AFR
	9	R3a	SINGLE	246.6347	1.000	RSX2 LED P6 50K R3
	2	R5a	SINGLE	423	1.322	RSX4 LED P4 50K R5
	1	R5-2	BACK-BACK	311.9213	1.000	RSX3 LED P4 50K R5
	4	WF	SINGLE	149.9762	1.000	RSXF2 LED P3 50K WFL
	1	R4b	SINGLE	246.6347	1.000	RSX2 LED P6 50K R4

Calculation Summary						
Project: Calculations						
Label	Units	Avg	Max	Min	Avg/Min	Max/Min
Back Lot	Fc	7.84	13.9	2.9	2.70	4.79
Front Line	Fc	39.66	57.0	19.6	2.02	2.91
Rear Display	Fc	32.43	43.6	20.6	1.57	2.12
Rear Sales	Fc	8.22	10.4	3.4	2.42	3.06
Sales Inventory	Fc	14.94	54.7	6.9	2.17	7.93

NOTE: Site illumination is reduced to less than 50 foot-candles after 11:00pm

