

MATCH LINE SEE SHEET L-2

City of Delray Beach, Florida - Tree Removal and Tree Replacement Guidelines:
(The Following Shall Apply Pursuant To City of Delray Beach Land Development Code - Landscape Regulations (Section 4.6.16(D)(2)(a) - "Preservation and Promotion of Existing Plant Communities"; and Section 3.4.6(G) "Tree Removal Permits"; and Are Reflected Upon These Tree Disposition/ Mitigation Plans and the "Landscape Planting Plans" Accordingly. The Owner and/or Contractor Shall Follow The Tree Replacement and Protection Guidelines, Within These Notes, As Well As The Aforementioned Codes.)

General Conditions/ Pre-Clearing Inspections: A Pre-Clearing Inspection Is Required Prior To The Initial Removal or Alteration of Any Vegetation In Order To Assure Proper Compliance With The Permit Conditions. A Post-Clearing Inspection Is Required Prior To Issuance of The Final Certificate of Occupancy. All Native Vegetation Outside of The Development Area Shall Be Maintained In Place As Outlined On The Tree Disposition Site Plans.

Tree Protection Note: Contractors Shall Use Caution During Construction To Avoid Damaging Any Existing Trees Listed As To Remain. (1) Barriers Shall Enclose Area Inside The Outer Edge of Drip Line. (2) Tree Protection Barrier Shall Be Conspicuous and High Enough To Be Easily Seen By Any Equipment Operators. (3) All Tree Protection Barrier Shall Be Constructed of Sturdy Scrap Wood (Four by Four Stock), or Other Sturdy Material (No Flagging or Ribbon Type Fencing Shall Be Allowed); (4) All Tree Protection Barriers To Be Completely Removed From Site At The End of Construction Period (Immediately Prior To Issuance of Certificate of Occupancy By The City of Delray Beach Building Department) Unless Otherwise Stipulated.

Methodology of Tree Removals: No Heavy Equipment or Machinery Shall Be Used, Nor Shall Any Construction Activities or Grade Changes Occur Within The Radius of The Drip Line of Native Trees Which Shall Be Preserved In Place, Unless Specifically Approved In Writing By The City of Delray Beach and/or the Landscape Architect. Use of Any Chemical Treatments Shall Have Prior Approval By The City of Delray Beach and the Landscape Architect Before Application. All Prohibited Species and/or Invasive Species Shall Be Removed as Indicated Within The Limits of Contract Area or Property To Be Developed Accordingly, as per The City of Delray Beach's Land Development Code.

Tree Locations/ Tree Removals and Tree Replacement Calculations: Trees That Are To Be Removed Must Be Mitigated For According To The Tree Canopy Credits Guidelines (Section 3.4.6(G) and Section 4.6.16(D)(1)(d) of The City of Delray Beach Land Development Code).

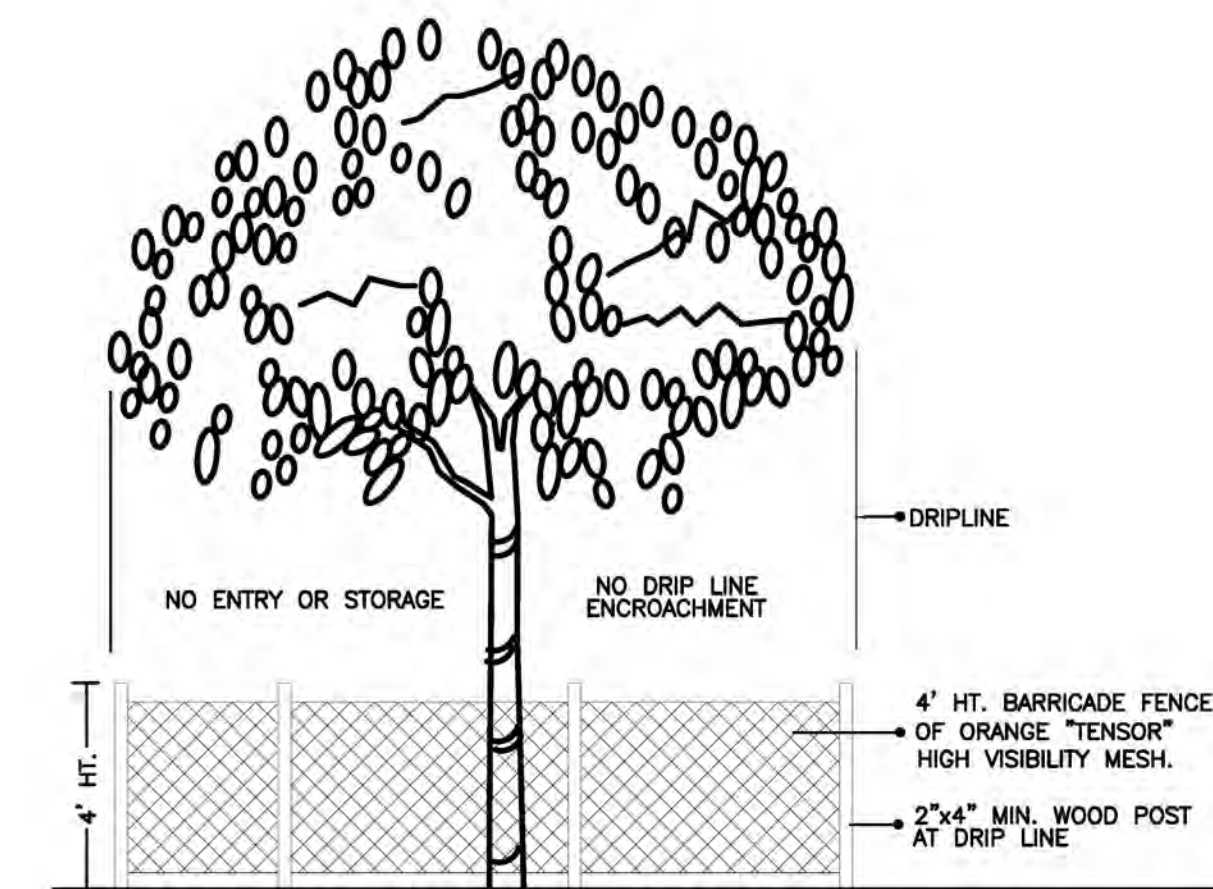
Maintenance and Monitoring Requirements: The Permit Holder Shall Be Responsible For Maintaining The Health of Any Replacement and/or Relocated Trees For A Min. of One Year From Planting. Throughout The Monitoring Period, The Permit Holder Shall Maintain a (100%) Survivorship Rate For All Installed Replacement Trees. If During The Monitoring Period, The Survival Rate of Any of The Plants Drops Below The Required Level, The Permit Holder Shall Have (15) Days To Plant A Sufficient Number of Additional Trees So As To Maintain The Required Survival Rate.

Tree Replacement Bond Requirement: Bonds May Be Required By The City of Delray Beach For Tree Removal and/or Tree Replacement Permits. Calculations For The Amount of Bonds For Non-Mature Trees Shall Be Computed Based Upon The Equivalent Canopy Replacement Criteria Applied To Each Tree To Be Relocated or Replaced and Upon The Cost of Installation and Maintenance. Determination of The Bond Amount For Mature Trees Shall Be Computed Based Upon The Most Current Version of The Guide For Plant Appraisal, Published By The International Society of Arboriculture. The Fair Market Value of The Cost of Trees That Would Be Required To Compensate For The Canopy To Be Relocated or Replaced Shall Be Posted.

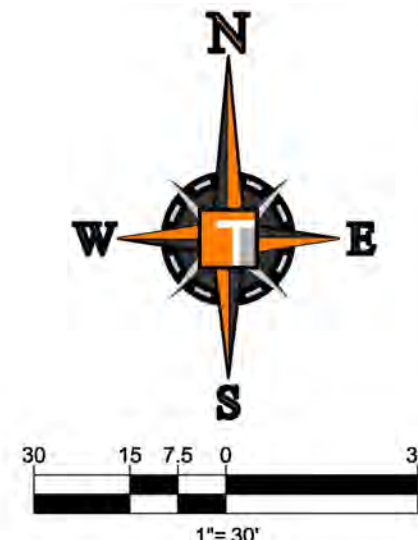
UNLESS OTHERWISE SPECIFICALLY SCHEDULED TO REMAIN, ALL HEDGES, SHRUBS AND GROUND COVERS ARE TO BE REMOVED.

PROPOSED SHOWROOM AND SERVICE BUILDING
59,214 S.F.
F.F.E. 16.50 NAVD

SEE SHEET L-3 FOR TREE DISPOSITION CHART AND NOTES, AND SHEETS L-4 AND L-5 FOR LANDSCAPE PLAN.



TREE PRESERVATION BARRICADE FENCING DETAIL



THOMAS
ENGINEERING GROUP
CIVIL ENGINEERS - PROJECT MANAGERS - LAND PLANNING - LANDSCAPE ARCHITECTS
OFFICES
4650 W. KENNEDY BLVD.
SUITE 100
FORT LAUDERDALE, FLORIDA 33334
1000 CORPORATE DR.
SUITE 100
FORT LAUDERDALE, FLORIDA 33309

REVISIONS		
REV.	DATE	COMMENT

811 KNOW WHAT'S BELOW
ALWAYS CALL 811
BEFORE YOU DIG
It's fast. It's free. It's the law.
www.callsunshine.com

SITE PLAN
ENTITLEMENTS

PROJECT No.: F170121
DRAWN BY: JFV
CHECKED BY: MAT
DATE: 08-15-19
CAD I.D.: TREE DISPOSITION PLAN

PROJECT:

LANDROVER OF
DELRAY BEACH
FOR
AUTONATION

DELRAY BEACH,
FLORIDA

THOMAS
ENGINEERING GROUP
RADICE III
1000 CORPORATE DRIVE, SUITE 250
FORT LAUDERDALE, FL 33334
PH: (954) 202-7000
FX: (954) 202-7070
www.ThomasEngineeringGroup.com

MICHAEL D. GROSSWIRTH
REGISTERED LANDSCAPE ARCHITECT
0818-19
FLORIDA LICENSE NO. 27528
FLORIDA BUSINESS REGISTRATION No. 27528

SHEET TITLE:
TREE DISPOSITION
PLAN

SHEET NUMBER:
L-1



Tree Replacement Bond Requirement: Bonds May Be Required By The City of Delray Beach For Tree Removal and/or Tree Replacement Permits. Calculations For The Amount of Bonds For Non-Mature Trees Shall Be Computed Based Upon The Equivalent Canopy Replacement Criteria Applied To Each Tree To Be Relocated or Replaced and Upon The Cost of Installation and Maintenance. Determination of The Bond Amount For Mature Trees Shall Be Computed Based Upon The Most Current Version of The Guide For Plant Appraisal, Published By The International Society of Arboriculture. The Estimated Fair Market Value of The Cost of Trees That Would Be Required To Compensate For The Canopy To Be Relocated or Replaced Shall Be Posted.

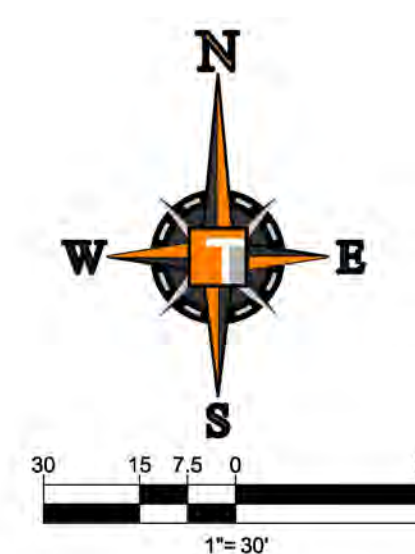
Diagram illustrating the Tree Preservation Barricade Fencing Detail. The diagram shows a tree with a trunk and canopy. A 4' HT. BARRICADE FENCE OF ORANGE "TENSOR" HIGH VISIBILITY MESH is installed around the tree. A 2"x4" MIN. WOOD POST AT DRIP LINE is shown at the base of the tree. The diagram also indicates the DRIPLINE and the NO ENTRY OR STORAGE area.

Labels in the diagram include:

- 4' HT. BARRICADE FENCE OF ORANGE "TENSOR" HIGH VISIBILITY MESH
- 2"x4" MIN. WOOD POST AT DRIP LINE
- DRIPLINE
- NO ENTRY OR STORAGE
- NO DRIP LINE ENCROACHMENT

TREE PRESERVATION BARRICADE FENCING DETAIL

NTR

[illegible]

**KNOW WHAT'S BELOW
ALWAYS CALL 811
BEFORE YOU DIG**

It's fast. It's free. It's the law.

www.callsunshine.com

SITE PLAN ENTITLEMENTS

PROJECT No.:	F17012
DRAWN BY:	JF
CHECKED BY:	MA
DATE:	08-16-1
CAD I.D.:	TREE DISPOSITION PLAN

PROJECT: _____

**LANDROVER OF
DELRAY BEACH**

— FOR —

AUTONATION

DELRAY BEACH,
FLORIDA

THOMAS
ENGINEERING GROUP

RADICE III
1000 CORPORATE DRIVE, SUITE 250
FORT LAUDERDALE, FL 33334
PH: (954) 202-7000
FX: (954) 202-7070
www.ThomasEngineeringGroup.com

MICHAEL D. GROSS, WRT

REGISTERED LANDSCAPE ARCHITECT
STATE OF FLORIDA

MICHAEL D. GROSS, WRT
LA 6666871
— ★ —

REGISTERED LANDSCAPE ARCHITECT
0816.19
FLORIDA LICENSE No. 6968871
FLORIDA BUSINESS CERT. No. 2752

SHEET TITLE:

**TREE DISPOSITION
PLAN**

SHEET NUMBER:

L-2

EXISTING TREE DISPOSITION CHART
LAND ROVER-DELRAY BEACH, FL

TREE NO	BOTANICAL NAME	COMMON NAME	HT (FT)	SPR (FT)	CANOPY (SQ.FT.)	CAL INS. @ DBH	CONDITION	DISPOSITION	IN LIEU FEE	COMMENTS
1	Conocarpus e sericeus	Silver Buttonwood	15	15	177	5	70%	REMAIN		OFF-SITE
2	Quercus virginiana	Live Oak	20	20	314	8	75%	REMAIN		OFF-SITE
3	Conocarpus e sericeus	Silver Buttonwood	15	15	177	5	70%	REMAIN		OFF-SITE
4	Quercus virginiana	Live Oak	20	20	314	6	70%	REMAIN		OFF-SITE
5	Conocarpus e sericeus	Silver Buttonwood	15	15	177	5	70%	REMAIN		OFF-SITE
6	Quercus virginiana	Live Oak	20	20	314	6	75%	REMAIN		OFF-SITE
7	Pinus elliotii	Slash Pine	20	20	314	5	60%	REMAIN		OFF-SITE
8	Pinus elliotii	Slash Pine	25	12	113	5	80%	REMAIN		OFF-SITE
9	Pinus elliotii	Slash Pine	25	10	78	5	80%	REMAIN		OFF-SITE
10	Pinus elliotii	Slash Pine	20	12	113	5	80%	REMAIN		OFF-SITE
11	Quercus virginiana	Live Oak	15	15	177	5	80%	REMAIN		OFF-SITE
12	Quercus virginiana	Live Oak	30	25	491	8	65%	REMAIN		OFF-SITE
13	Quercus virginiana	Live Oak	30	25	491	8	65%	REMAIN		OFF-SITE
14	Quercus virginiana	Live Oak	30	25	491	8	65%	REMAIN		OFF-SITE
15	Quercus virginiana	Live Oak	30	25	491	8	65%	REMAIN		OFF-SITE
16	Quercus virginiana	Live Oak	30	25	491	8	65%	REMAIN		OFF-SITE
17	Quercus virginiana	Live Oak	30	25	491	10	65%	REMAIN		OFF-SITE
18	Quercus virginiana	Live Oak	30	25	491	12	65%	REMAIN		OFF-SITE
19	Quercus virginiana	Live Oak	20	15	177	5	65%	REMAIN		OFF-SITE
20	Conocarpus e sericeus	Silver Buttonwood	15	12	113	5	70%	REMAIN		OFF-SITE
21	Quercus virginiana	Live Oak	18	10	78	5	75%	REMAIN		OFF-SITE
22	Conocarpus e sericeus	Silver Buttonwood	12	10	79	5	70%	REMAIN		OFF-SITE
23	Quercus virginiana	Live Oak	15	15	177	5	75%	REMAIN		OFF-SITE
24	Conocarpus e sericeus	Silver Buttonwood	12	10	79	5	75%	REMAIN		OFF-SITE
25	Quercus virginiana	Live Oak	18	15	177	5	65%	REMAIN		OFF-SITE
26	Conocarpus e sericeus	Silver Buttonwood	15	15	177	5	65%	REMAIN		OFF-SITE
27	Quercus virginiana	Live Oak	20	15	177	5	65%	REMAIN		OFF-SITE
28	Conocarpus e sericeus	Silver Buttonwood	12	10	79	4	65%	REMAIN		OFF-SITE
29	Quercus virginiana	Live Oak	20	15	177	5	65%	REMAIN		OFF-SITE
30	Conocarpus e sericeus	Silver Buttonwood	15	10	79	5	66%	REMAIN		OFF-SITE
31	Quercus virginiana	Live Oak	20	20	314	5	65%	REMAIN		OFF-SITE
32	Quercus virginiana	Live Oak	20	20	314	5	65%	REMAIN		OFF-SITE
33	Conocarpus e sericeus	Silver Buttonwood	10	8	50	4	66%	REMAIN		OFF-SITE
34	Quercus virginiana	Live Oak	20	15	177	4	65%	REMAIN		OFF-SITE
35	Conocarpus e sericeus	Silver Buttonwood	15	12	113	6	65%	REMAIN		OFF-SITE
36	Quercus virginiana	Live Oak	20	20	314	6	65%	REMAIN		OFF-SITE
37	Quercus virginiana	Live Oak	15	10	79	5	67%	REMAIN		OFF-SITE
38	Quercus virginiana	Live Oak	20	20	314	8	65%	REMAIN		OFF-SITE
39	Lagastromia indica	Crape Myrtle	15	12	113	5	70%	REMAIN		OFF-SITE
40	Lagastromia indica	Crape Myrtle	18	12	113	5	70%	REMAIN		OFF-SITE
41	Lagastromia indica	Crape Myrtle	15	10	79	5	70%	REMAIN		OFF-SITE
42	Quercus virginiana	Live Oak	25	25	491	8	66%	REMAIN		OFF-SITE
43	Quercus virginiana	Live Oak	25	25	491	10	66%	REMAIN		OFF-SITE
44	Quercus virginiana	Live Oak	20	20	314	8	66%	REMAIN		OFF-SITE
45	Cordia sebestena	Gelger	12	8	50	4	66%	REMAIN		OFF-SITE
46	Cordia sebestena	Gelger	12	8	50	4	66%	REMAIN		OFF-SITE
47	Cordia sebestena	Gelger	12	8	50	4	66%	REMAIN		OFF-SITE
48	Cordia sebestena	Gelger	12	8	50	4	66%	REMAIN		OFF-SITE
49	Cordia sebestena	Gelger	12	8	50	4	66%	REMAIN		OFF-SITE
50	Cordia sebestena	Gelger	12	8	50	4	66%	REMAIN		OFF-SITE
51	Cordia sebestena	Gelger	12	8	50	4	66%	REMAIN		OFF-SITE
52	Cordia sebestena	Gelger	12	8	50	4	66%	REMAIN		OFF-SITE
53	Cordia sebestena	Gelger	12	8	50	4	66%	REMAIN		OFF-SITE
54	Conocarpus e sericeus	Silver Buttonwood	15	15	177	5	66%	REMAIN		OFF-SITE
55	Conocarpus e sericeus	Silver Buttonwood	15	15	177	5	66%	REMAIN		OFF-SITE
56	Conocarpus e sericeus	Silver Buttonwood	15	15	177	5	66%	REMAIN		OFF-SITE
57	Conocarpus e sericeus	Silver Buttonwood	15	15	177	5	66%	REMAIN		OFF-SITE
58	Conocarpus e sericeus	Silver Buttonwood	15	15	177	5	66%	REMAIN		OFF-SITE
59	Conocarpus e sericeus	Silver Buttonwood	15	15	177	5	66%	REMAIN		OFF-SITE
60	Quercus virginiana	Live Oak	25	25	491	8	66%	REMAIN		OFF-SITE
61	Quercus virginiana	Live Oak	10	12	113	5	66%	REMAIN		OFF-SITE
62	Cordia sebestena	Gelger	10	8	50	3	66%	REMAIN		OFF-SITE
63	Cordia sebestena	Gelger	10	8	50	3	66%	REMAIN		OFF-SITE
64	Cordia sebestena	Gelger	10	8	50	3	66%	REMAIN		OFF-SITE
65	Cordia sebestena	Gelger	10	8	50	3	66%	REMAIN		OFF-SITE
66	Cordia sebestena	Gelger	10	8	50	3	66%	REMAIN		OFF-SITE
67	Cordia sebestena	Gelger	10	8	50	3	66%	REMAIN		OFF-SITE
68	Cordia sebestena	Gelger	10	8	50	3	66%	REMAIN		OFF-SITE
69	Conocarpus e sericeus	Silver Buttonwood	12	15	177	4	55%	REMAIN		OFF-SITE
70	Cordia sebestena	Gelger	12	8	50	4	66%	REMAIN		OFF-SITE
71	Cordia sebestena	Gelger	10	10	79	5	66%	REMAIN		OFF-SITE
72	Cordia sebestena	Gelger	8	6	28	3	55%	Relocate		
73	Cordia sebestena	Gelger	14	8	50	4	55%	Relocate		
74	Cordia sebestena	Gelger	10	8	50	4	60%	Relocate		
75	Cordia sebestena	Gelger	12	8	50	4	60%	Relocate		
76	Cordia sebestena	Gelger	10	8	50	3	60%	Relocate		
77	Cordia sebestena	Gelger	15	8	50	3	60%	Relocate		
78	Sabal palmetto	Cabbage Palm	18	10	79	18	65%	REMAIN		
79	Sabal palmetto	Cabbage Palm	10	10	79	18	65%	REMAIN		
80	Ilex cassine	Dahoon Holly	10	10	79	6	66%	Relocate		
81	Ilex cassine	Dahoon Holly	12	8	50	6	66%	Relocate		
82	Cordia sebestena	Gelger	8	8	50	4	66%	Relocate		
83	Ilex cassine	Dahoon Holly	12	8	50	6	66%	Relocate		
84	Cordia sebestena	Gelger	15	8	50	4	66%	Relocate		
85	Conocarpus e sericeus	Silver Buttonwood	15	15	177	10	66%	Relocate		
86	Ilex cassine	Dahoon Holly	18	10	79	6	65%	REMAIN		
87	Sabal palmetto	Cabbage Palm	18	10	79	16	65%	REMAIN		
88	Ilex cassine	Dahoon Holly	12	8	50	4	66%	Relocate		
89	Ilex cassine	Dahoon Holly	12	15	177	4	66%	REMAIN		
90	Ilex cassine	Dahoon Holly	15	10	79	5	66%	REMAIN		
91	Quercus virginiana	Live Oak	20	25	491	14	66%	REMAIN		
92	Quercus virginiana	Live Oak	20	20	314	8	50%	remove	\$ 3,600.00	
93	Quercus virginiana	Live Oak	20	20	314	8	50%	remove	\$ 3,600.00	
94	Quercus virginiana	Live Oak	20	20	314	6	50%	remove	\$ 2,700.00	
95	Quercus virginiana	Live Oak	30	25	491	14	45%	remove		
96	Quercus virginiana	Live Oak	25	20	314	13	45%	remove		
97	Quercus virginiana	Live Oak	30	25	491	13	45%	remove		
98	Quercus virginiana	Live Oak	25	25	491	13	45%	remove		
99	Quercus virginiana	Live Oak	25	25	491	12	60%	REMAIN		
100	Quercus virginiana	Live Oak	25	25	491	10	65%	REMAIN		
101	Quercus virginiana	Live Oak	30	30	707	12	65%	REMAIN		
102	Quercus virginiana	Live Oak	25	25	491	16	45%	remove		
103	Quercus virginiana	Live Oak	35	30	707	15	45%	remove		
104	Quercus virginiana	Live Oak	40	35	962	15	45%	remove		
105	Quercus virginiana	Live Oak	45	35	962	18	45%	remove		
106	Quercus virginiana	Live Oak	20	25	491	10	45%	remove		
107	Quercus virginiana	Live Oak	35	35	962	15	45%	remove		
108	Quercus virginiana	Live Oak	40	30	707	22	45%	remove		
109	Quercus virginiana	Live Oak	50	40	1257	15	45%	remove		
110	Quercus virginiana	Live Oak	40	30	707	24	45%	remove		
111	Quercus virginiana	Live Oak	30	25	491	14	45%	remove		
112	Tabebuia pallida	Pink Trumpet Tree	18	12	113	8	55%	REMAIN		
113	Tabebuia pallida	Pink Trumpet Tree	15	12	113	10	45%	remove		
114	Quercus virginiana	Live Oak	40	30	707	24	45%	REMAIN		
115	Quercus virginiana	Live Oak	30	25	491	26	45%	REMAIN		
116	Quercus virginiana	Live Oak	15	30	707	20	50%	remove		
117	Quercus virginiana	Live Oak	40	30	707	24	45%	remove		
118	Sabal palmetto	Cabbage Palm	18	10	79	15	65%	Relocate		

119	Quercus virginiana	Live Oak	30	20	314	15	45%	remove	
120	Quercus virginiana	Live Oak	50	30	707	20	45%	remove	
121	Quercus virginiana	Live Oak	45	45	1590	22	45%	remove	
122	Quercus virginiana	Live Oak	40	30	707	22	45%	remove	
123	Tabebuia pallida	Pink Trumpet Tree	20	10	79	8	55%	REMAIN	
124	Tabebuia pallida	Pink Trumpet Tree	18	10	79	6	55%	REMAIN	
125	Quercus virginiana	Live Oak	40	30	707	22	55%	REMAIN	
126	Quercus virginiana	Live Oak	25	25	491	12	55%	REMAIN	
127	Quercus virginiana	Live Oak	30	30	707	15	55%	REMAIN	
128	Quercus virginiana	Live Oak	30	45	1590	22	55%	REMAIN	
129	Syagrus romanzoffianum	Queen Palm	25	15	177	8	55%	REMAIN	
130	Quercus virginiana	Live Oak	50	45	1590	24	45%	remove	
131	Coccoloba diversifolia	Pigeon Plum	18	18	254	6	50%	remove	\$ 2,700.00
132	Wodyetia bifurcata	Foxtail Palm	18	12	113	6	40%	remove	
133	Wodyetia bifurcata	Foxtail Palm	18	12	113	10	40%	remove	
134	Wodyetia bifurcata	Foxtail Palm	18	12	113	10	40%	remove	
135	Wodyetia bifurcata	Foxtail Palm	18	12	113	10	40%	remove	
136	Wodyetia bifurcata	Foxtail Palm	18	12	113	10	40%	remove	
137	Wodyetia bifurcata	Foxtail Palm	18	12	113	20	40%	remove	
138	Quercus virginiana	Live Oak	50	30	707	24	45%	remove	
139	Quercus virginiana	Live Oak	60	30	707	24	45%	remove	
140	Phoenix roebelinii	Pygmy Date Palm	8	6	28	4	45%	remove	
141	Cocos nucifera	Coconut Palm	35	20	314	8	75%	Relocate	
142	Cocos nucifera	Coconut Palm	35	20	314	8	75%	Relocate	
143	Cocos nucifera	Coconut Palm	35	20	314	7	75%	Relocate	
144	Cocos nucifera	Coconut Palm	35	20	314	7	75%	Relocate	
145	Cocos nucifera	Coconut Palm	35	20	314	7	75%	Relocate	
146	Cocos nucifera	Coconut Palm	35	20	314	6	75%	Relocate	
147	Sabal palmetto	Cabbage Palm	28	10	79	10	75%	Relocate	
148	Sabal palmetto	Cabbage Palm	30	10	79	10	75%	Relocate	
149	Sabal palmetto	Cabbage Palm	28	10	79	10	75%	Relocate	
150	Quercus virginiana	Live Oak	50	50	1963	20	45%	remove	
151	Quercus virginiana	Live Oak	45	45	1590	20	45%	remove	
152	Quercus virginiana	Live Oak	50	30	707	18	45%	remove	
153	Quercus virginiana	Live Oak	50	30	707	15	45%	remove	
154	Quercus virginiana	Live Oak	30	30	707	15	40%	remove	
155	Quercus virginiana	Live Oak	30	30	707	14	40%	remove	
156	Quercus virginiana	Live Oak	50	30	707	15	40%	remove	
157	Quercus virginiana	Live Oak	25	25	491	13	45%	remove	
158	Quercus virginiana	Live Oak	25	25	491	8	50%	remove	\$ 5,200.00
159	Quercus virginiana	Live Oak	50	40	1257	22	45%	remove	
160	Quercus virginiana	Live Oak	45	45	1590	24	45%	remove	
161	Quercus virginiana	Live Oak	35	30	707	16	40%	remove	
162	Quercus virginiana	Live Oak	25	20	707	16	40%	remove	
163	Quercus virginiana	Live Oak	20	25	491	13	40%	remove	
164	Quercus virginiana	Live Oak	50	40	1257	22	40%	remove	
165	Quercus virginiana	Live Oak	45	45	1590	24	40%	remove	
166	Quercus virginiana	Live Oak	25	25	491	8	45%	remove	
167	Quercus virginiana	Live Oak	20	25	491	8	50%	remove	\$ 5,200.00
168	Quercus virginiana	Live Oak	15	15	177	5	50%	REMAIN	
169	Quercus virginiana	Live Oak	25	25	491	9	55%	REMAIN	
170	Quercus virginiana	Live Oak	25	25	491	13	55%	REMAIN	
171	Quercus virginiana	Live Oak	25	25	491	8	55%	REMAIN	
172	Quercus virginiana	Live Oak	15	15	177	5	50%	REMAIN	
173	Quercus virginiana	Live Oak	25	25	491	10	55%	REMAIN	
174	Quercus virginiana	Live Oak	50	50	1963	15	45%	remove	
175	Quercus virginiana	Live Oak	35	35	962	16	60%	REMAIN	
176	Quercus virginiana	Live Oak	50	50	1963	20	60%	REMAIN	
177	Quercus virginiana	Live Oak	50	40	1257	18	45%	remove	
178	Quercus virginiana	Live Oak	35	35	962	15	45%	remove	
179	Magnolia grandiflora	Magnolia	15	6	28	9	70%	Relocate	
180	Magnolia grandiflora	Magnolia	15	6	28	10	65%	Relocate	
181	Vetelia montgomeryana	Montgomery Palm	20	15	177	12	65%	Relocate	
182	Vetelia montgomeryana	Montgomery Palm	23	15	177	18	70%	Relocate	triple (0 @ 4")
183	Syagrus romanzoffianum	Queen Palm	28	15	177	13	65%	Relocate	
184	Syagrus romanzoffianum	Queen Palm	25	15	177	10	65%	Relocate	
185	Syagrus romanzoffianum	Queen Palm	28	15	177	9	65%	Relocate	
186	Magnolia grandiflora	Magnolia	10	4	13	3	75%	Relocate	
187	Magnolia grandiflora	Magnolia	4	10	4	3	70%	Relocate	
188	Vetelia montgomeryana	Montgomery Palm	20	15	177	12	50%	remove	triple (one dead stalk 2 @ 4")
189	Vetelia montgomeryana	Montgomery Palm	25	10	79	6	60%	Relocate	
190	Magnolia grandiflora	Magnolia	12	5	29	18	70%	Relocate	
191	Magnolia grandiflora	Magnolia	12	5	29	3	70%	Relocate	
192	Vetelia montgomeryana	Montgomery Palm	23	15	177	18	70%	Relocate	triple (0 @ 6")
193	Vetelia montgomeryana	Montgomery Palm	23	15	177	18	70%	Relocate	triple (0 @ 7")
194	Magnolia grandiflora	Magnolia	12	5	29	4	70%	Relocate	
195	Magnolia grandiflora	Magnolia	15	6	28	4	70%	Relocate	
196	Syagrus romanzoffianum	Queen Palm	30	15	177	9	65%	REMAIN	
197	Vetelia montgomeryana	Montgomery Palm	20	10	79	5	70%	REMAIN	
198	Vetelia montgomeryana	Montgomery Palm	23	15	177	24	70%	REMAIN	triple (0 @ 5")
199	Syagrus romanzoffianum	Queen Palm	25	15	177	10	65%	REMAIN	
200	Syagrus romanzoffianum	Queen Palm	25	15	177	10	65%	REMAIN	

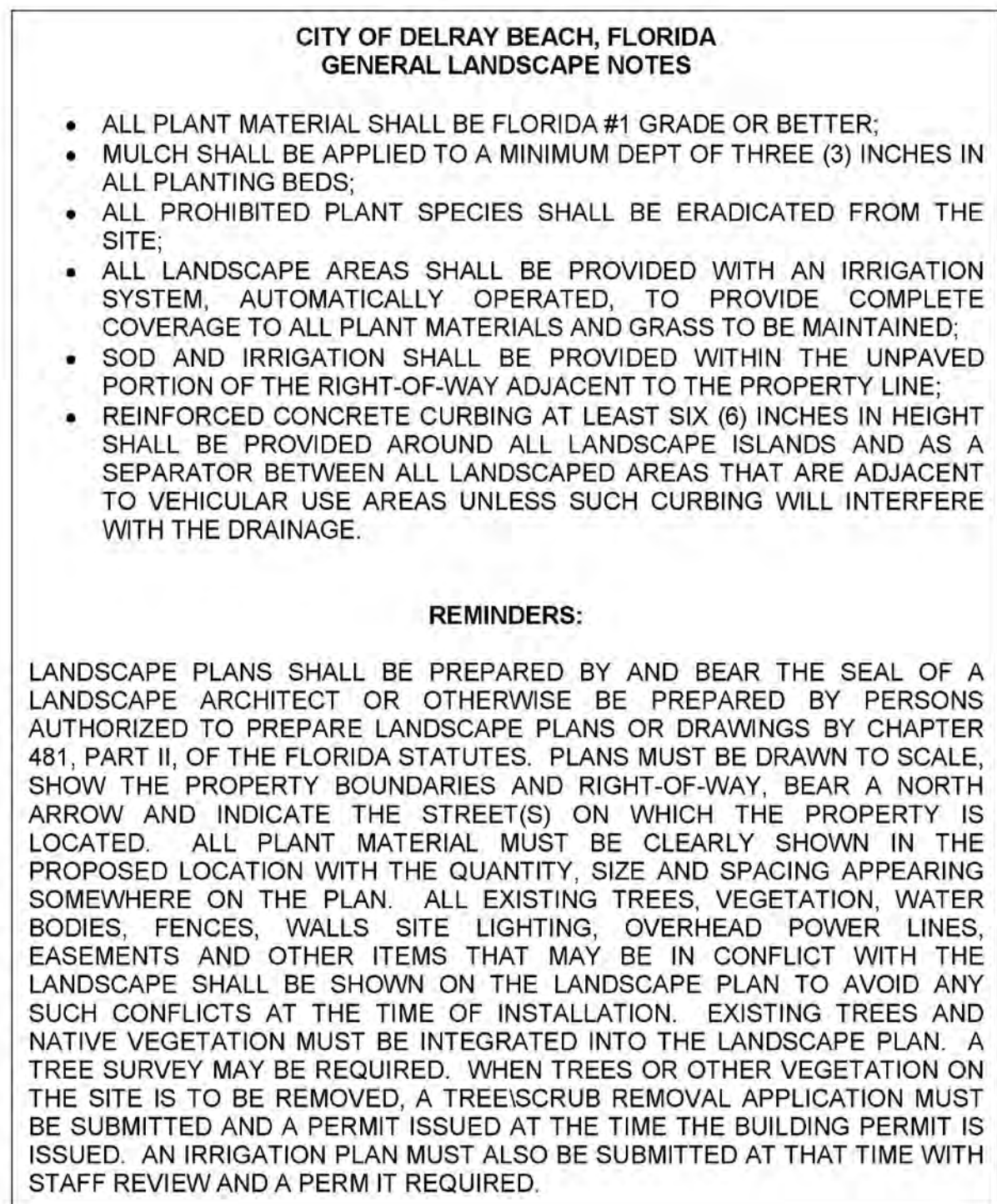
TOTAL DBH ON SITE:1654

TOTAL DBH TO BE RELOCATED OR REMAIN:778

TOTAL DBH TO BE REMOVED:876

SEE LANDSCAPE PLAN SHEETS L-4 & L-5

\$ 23,000.00 - 1 NUIE FEE PAYMENT



NOTE: PLEASE REFER TO SHEET L-1 THRU L-3
FOR DISPOSITION OF EXISTING PLANT
MATERIALS; SHEET L-6 FOR PLANTING DETAILS,
AND SHEET L-7 FOR GENERAL NOTES.

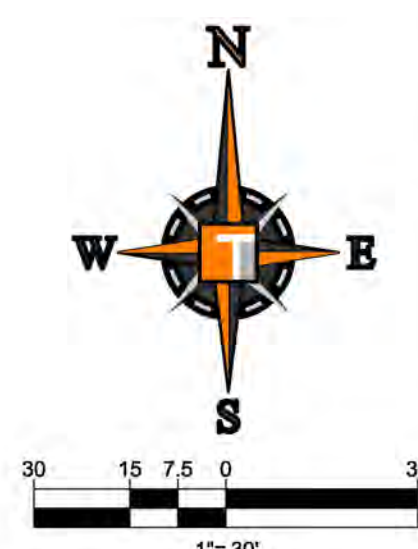
NOTE: ANY TREES OR SHRUBS PLACED WITHIN WATER, SEWER OR DRAINAGE EASEMENT SHALL CONFORM TO THE CITY OF DELRAY BEACH STANDARD DETAILS; LD 1.1 AND LD 1.2 (SEE DETAILS SHEET L-6).

NOTE: ALL EXISTING SOIL WITHIN LANDSCAPE AREAS ADJACENT TO VEHICULAR USE AREAS IS REQUIRED TO BE REMOVED (TO 30" BELOW GRADE), INSPECTED AND THEN REPLACED WITH A 60/40 MIX OF SAND TO TOPSOIL. (SEE DETAIL SHEET L-6).

IRRIGATION SHALL BE FROM A NON-POTABLE
WATER SOURCE.

NOTE: UNLESS OTHERWISE SPECIFICALLY NOTED,
ALL AREAS LABELED AS "SOD" TO BE
STENOTAPHRUM SECUNDATUM, V. FLORITAM
SOLID SOD. SEE NOTE O ON SHEET L-7.

LEGEND
C: CUSTOMER/EMPLOYEE PARKING
I: INVENTORY
E: EMPLOYEE PARKING
S: SERVICE
D: DISPLAY PARKING

[illegible]

SITE PLAN

ENTITLEMENTS

PROJECT No.:	F170121
DRAWN BY:	JVF
CHECKED BY:	MAT
DATE:	08-16-19
CAD I.D.:	F170121 - LANDSCAPE PLAN

PROJECT:

**LANDROVER OF
DELRAY BEACH**

— FOR —

AUTONATION

DELRAY BEACH,
FLORIDA



RADICE III
1000 CORPORATE DRIVE, SUITE 250
FORT LAUDERDALE, FL 33334
PH: (954) 202-7000
FX: (954) 202-7070
www.ThomasEngineeringGroup.com

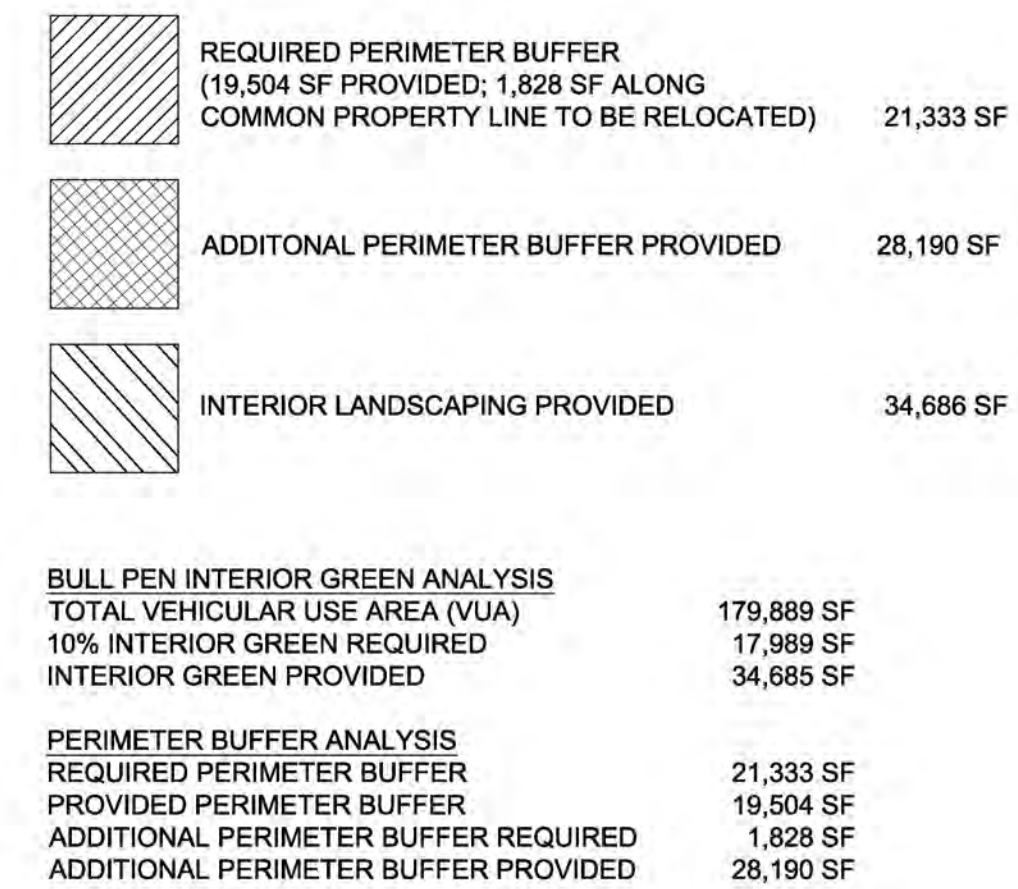


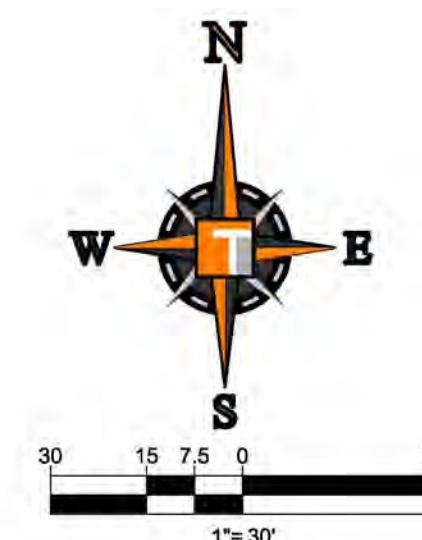
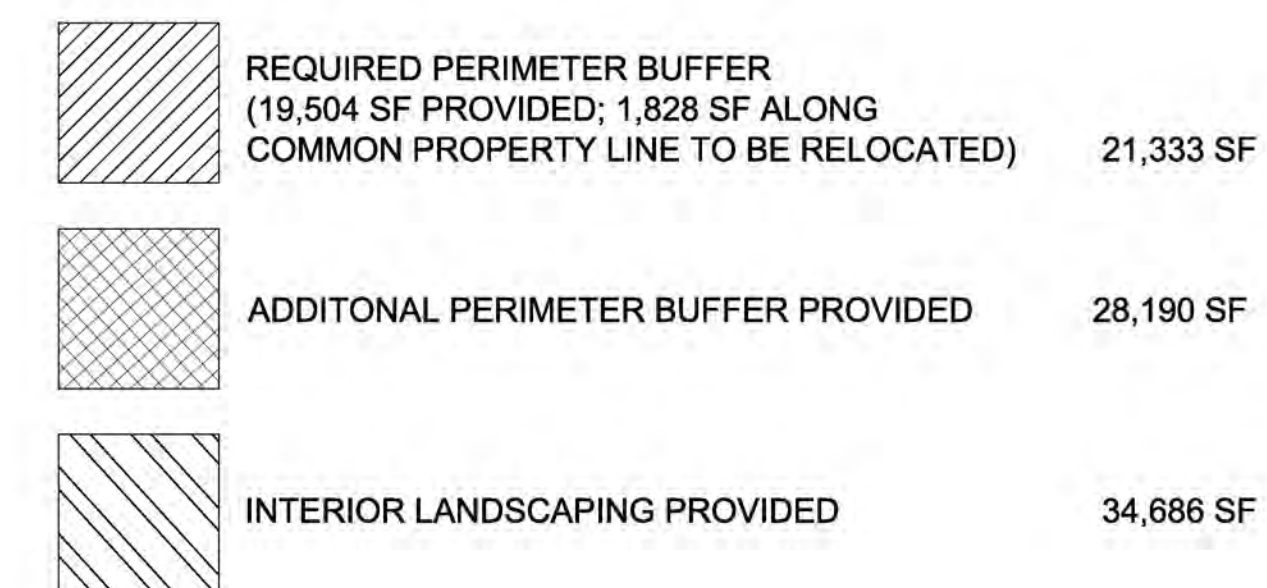
SHEET TITLE:

LANDSCAPE PLAN

SHEET NUMBER:

L-4



[illegible]

SITE PLAN ENTITLEMENTS

PROJECT No.:	F170121
DRAWN BY:	JF
CHECKED BY:	MA
DATE:	08-16-1
CAD I.D.:	F170121 - LANDSCAPE AREA

PROJECT:

**LANDROVER OF
DELRAY BEACH**

FOR

AUTONATION

DELRAY BEACH,
FLORIDA



RADICE III
1000 CORPORATE DRIVE, SUITE 250
FORT LAUDERDALE, FL 33334
PH: (954) 202-7000
FX: (954) 202-7070
www.ThomasEngineeringGroup.com



SHEET TITLE:

**LANDSCAPE AREA
EXHIBIT**

SHEET NUMBER:

L-13