

# SKETCH OF DESCRIPTION

( THIS IS NOT A SURVEY )

THE SOUTH 5 FEET OF LOT 4, BLOCK C

## THIRD ADDITION OF HIGH ACRES

According To The Plat Recorded In Plat Book 24, Page 19, Recorded In The Public  
Record Of Palm Beach County, Florida Said Land Situate, Lying, And Being In  
Palm Beach County, Florida .

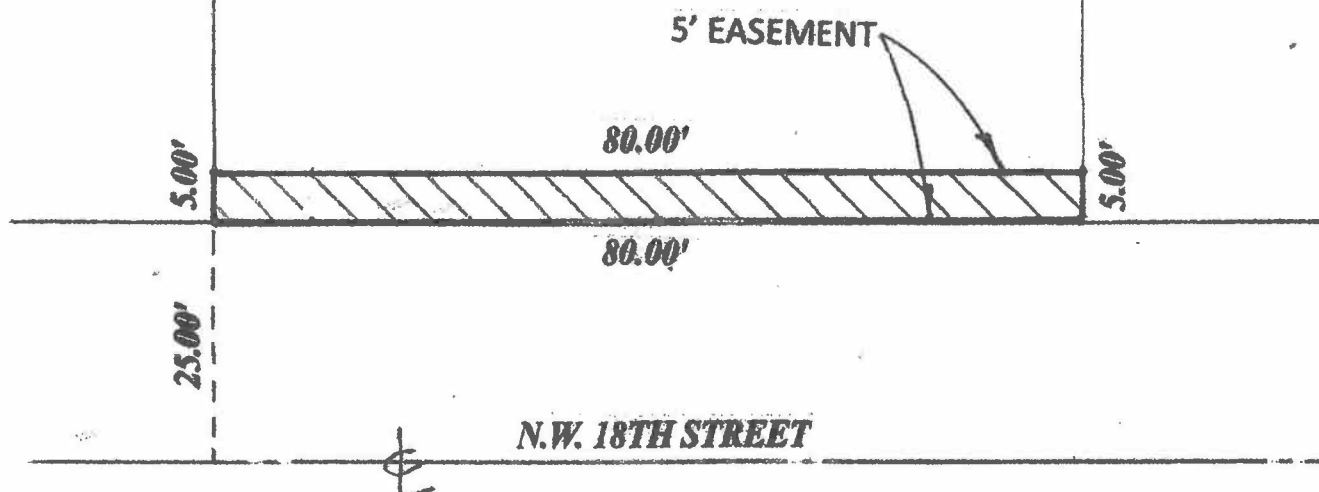


SCALE: 1" = 20'

LOT 5  
BLOCK C

LOT 4  
BLOCK C

LOT 3  
BLOCK C



I HEREBY CERTIFY THAT THIS SKETCH OF DESCRIPTION  
SHOWN HEREON MEETS THE STANDARDS OF PRACTICE SET  
FORTH IN CHAPTER SJ-17-050-052 FLORIDA ADMINISTRATIVE  
CODE PURSUANT TO SECTION 472.027, FLORIDA STATUTES

HARRY A BURGESS PLS 5089

**Renner Burgess, Inc.**

**LAND SURVEYING**

801 S.E. 6th Ave., Suite 101  
Delray Beach, FL 33483

Phone 561-243-4624  
Fax 243-4669