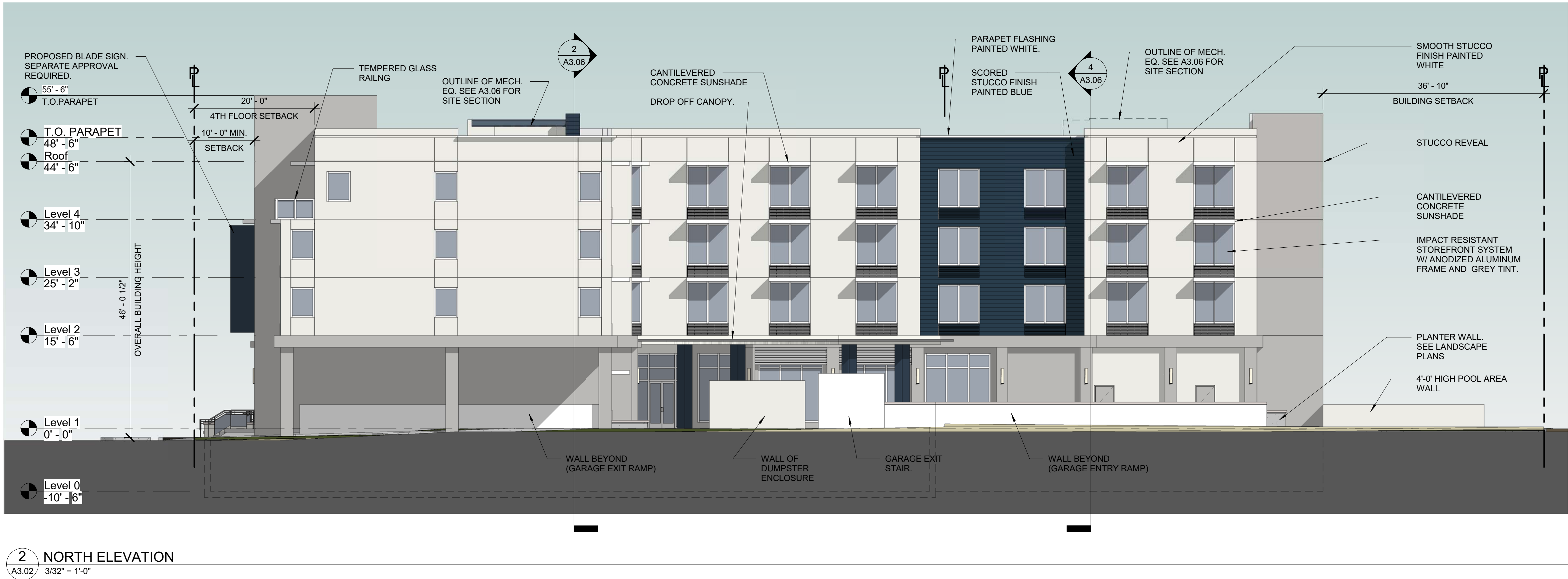
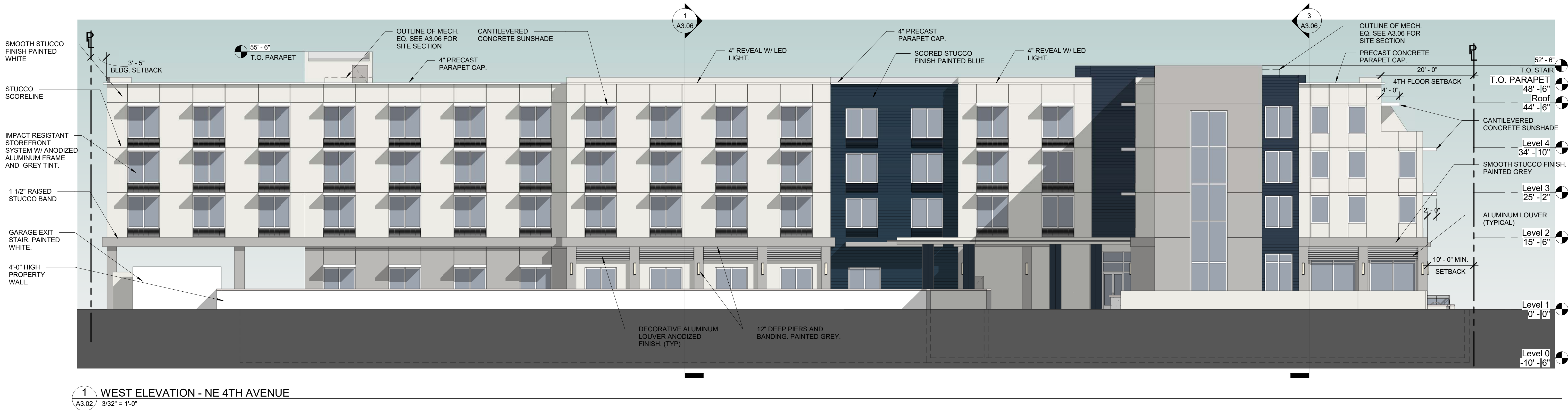


THIS DOCUMENT IS THE PROPERTY OF CURRIE SOWARDS AGUILA ARCHITECTS INC. ALL RIGHTS ARE RESERVED. ANY POSSESSION, REPRODUCTION OR OTHER USE OF THIS DOCUMENT, WITHOUT THE WRITTEN CONSENT OF CURRIE SOWARDS AGUILA ARCHITECTS INC., IS PROHIBITED.

COLOR LEGEND	
COLOR	MATERIAL
	ACCENT COLOR SHERWIN WILLIAMS #SW6244 NAVAL
	BASE/BODY COLOR: SHERWIN WILLIAMS #SW7668 MARCH WIND
	BODY COLOR: SHERWIN WILLIAMS #SW7005 PURE WHITE
	GLAZING: GRAY TINT NON REFLECTIVE GLASS
	ANODIZED ALUMINUM LOUVERS, STOREFRONT FRAMES, ANODIZED HORIZONTAL SCREENING
	



2 NORTH ELEVATION
A3.02 3/32" = 1'-0"



1 WEST ELEVATION - NE 4TH AVENUE
A3.02 3/32" = 1'-0"



**CURRIE
SOWARDS
AGUILA
architects**

Architecture, Planning,
Interiors, &
Sustainable Design

AA26001584
185 NE 4TH AVENUE SUITE 101
DELRAY BEACH, FL 33483

T: (561) 276-4951 F: (561) 243-8184
E-MAIL: office@csa-architects.com

ISSUED FOR : SPA 10-01-19

BIDS

PERMIT

CONSTRUCTION

SEAL



ROBERT G. CURRIE
FLORIDA REGISTRATION #AR0004964

PROJECT TITLE

PHG DELRAY

202 N. Federal Hwy.
Delray Beach, FL

REVISIONS		
NUM.	DESCRIPTION	DATE

THESE DRAWINGS ARE PREPARED PER ESTABLISHED INDUSTRY STANDARDS AND REPRESENT THE ARCHITECT AND ENGINEERS DESIGN CONCEPT. THEY ARE NOT INTENDED TO PROVIDE EVERY DETAIL OR CONDITION REQUIRED TO CONSTRUCT THE BUILDING. THE CONTRACTOR THROUGH SUBMITTALS AND OTHER COORDINATION EFFORTS IS FULLY RESPONSIBLE FOR PROVIDING A COMPLETE AND OPERATIONAL BUILDING WHETHER INDICATED ON THE PLANS OR NOT.

DRAWING TITLE
**EXTERIOR
ELEVATIONS**

DATE 10/01/19 DRAWN BY KAB
JOB NUMBER 181201
DRAWING NUMBER

A3.02

SPRAB RE-SUBMITTAL