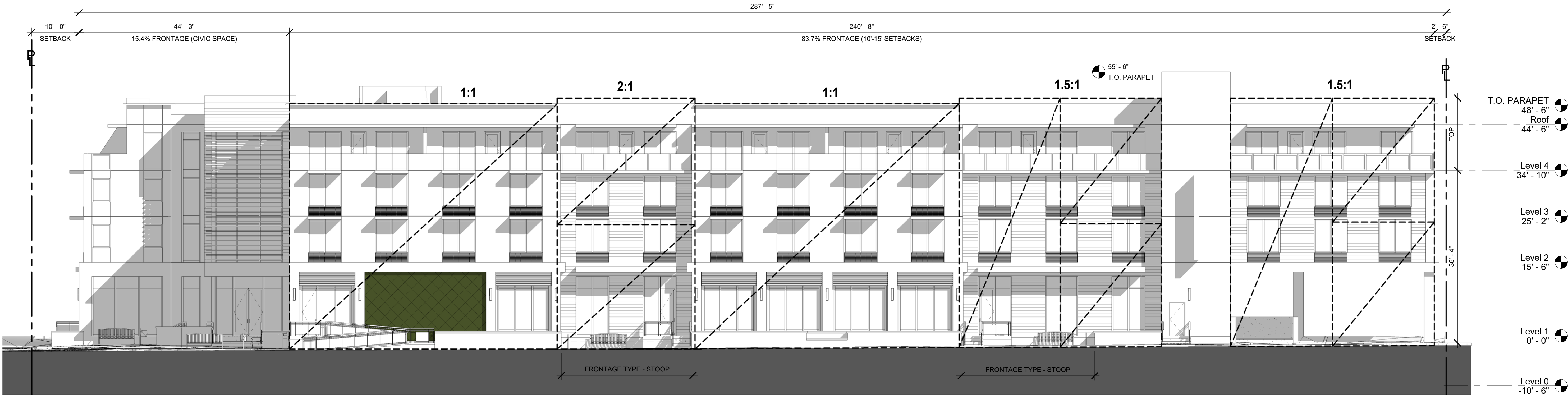
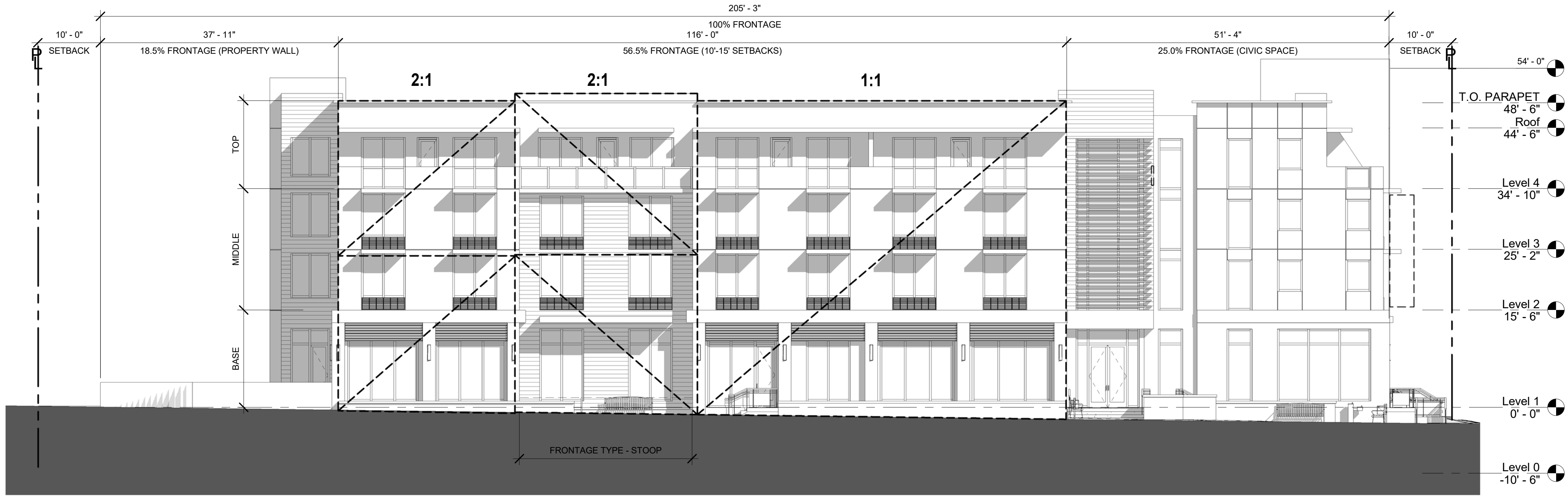


THIS DOCUMENT IS THE PROPERTY OF CURRIE SOWARDS AGUILA ARCHITECTS INC. ALL RIGHTS ARE RESERVED. ANY POSSESSION, REPRODUCTION OR OTHER USE OF THIS DOCUMENT, WITHOUT THE WRITTEN CONSENT OF CURRIE SOWARDS AGUILA ARCHITECTS INC., IS PROHIBITED.
10/1/2019 10:10:23 AM



1 EAST SIDE FRONTAGE DIAGRAM
A3.03 3/32" = 1'-0"



2 SOUTH ELEVATION - NE 2ND STREET
A3.03 3/32" = 1'-0"



**CURRIE
SOWARDS
AGUILA
architects**

Architecture, Planning,
Interiors, &
Sustainable Design

AA26001584
185 NE 4TH AVENUE SUITE 101
DELRAY BEACH, FL 33483

T: (561) 276-4951 F: (561) 243-8184
E-MAIL: office@csa-architects.com

ISSUED FOR : SPA 10-01-19

BIDS PERMIT

CONSTRUCTION

SEAL



ROBERT G. CURRIE
FLORIDA REGISTRATION #AR0004964

PROJECT TITLE

PHG DELRAY

ARCHITECTURAL STANDARDS

THIS PROJECT DESIGN PROPOSED IS MASONRY MODERN IN CONJUNCTION WITH FRONTAGE TYPE - STOOP.

THE ELEVATIONS EXHIBIT THE MASONRY MODERN ARCHITECTURAL STYLE BY PROVIDING:

- PARAPET WALLS OF STUCCO AND GLASS AT THE 4TH FLOOR TERRACES
- CANTILEVERED CONCRETE SUNSHADE COMPONENTS WITH VOIDS, ILLUSTRATING CARVED ELEMENTS
- WINDOW PROPORTIONS ARE VERTICAL
- DECORATIVE METAL PANELS AT WINDOW BASES ON UPPER FLOORS
- CLEARLY IDENTIFIABLE ENTRANCE VIA CIVIC SPACE
- GEOMETRIC FORMS TO SHOW VOLUMETRIC LAYOUT
- PRIMARY FINISHES ARE STUCCO AND GLASS
- ESTABLISHED BASE, MIDDLE AND TOP
- RECESSED AREAS WITH CONTRASTING COLOR TO REINFORCE MOVEMENT IN THE FACADES.

202 N. Federal Hwy.
Delray Beach, FL

REVISIONS		
NUM.	DESCRIPTION	DATE

THESE DRAWINGS ARE PREPARED PER ESTABLISHED INDUSTRY STANDARDS AND REPRESENT THE ARCHITECT AND ENGINEERS DESIGN CONCEPT. THEY ARE NOT INTENDED TO PROVIDE EVERY DETAIL OR CONDITION REQUIRED TO CONSTRUCT THE BUILDING. THE CONTRACTOR THROUGH SUBMITTALS AND OTHER COORDINATION EFFORTS IS FULLY RESPONSIBLE FOR PROVIDING A COMPLETE AND OPERATIONAL BUILDING WHETHER INDICATED ON THE PLANS OR NOT.

DRAWING TITLE
**FRONTAGE
DIAGRAMS**

DATE 10/01/19 | DRAWN BY KAB
JOB NUMBER 181201
DRAWING NUMBER

A3.03

SPRAB RE-SUBMITTAL