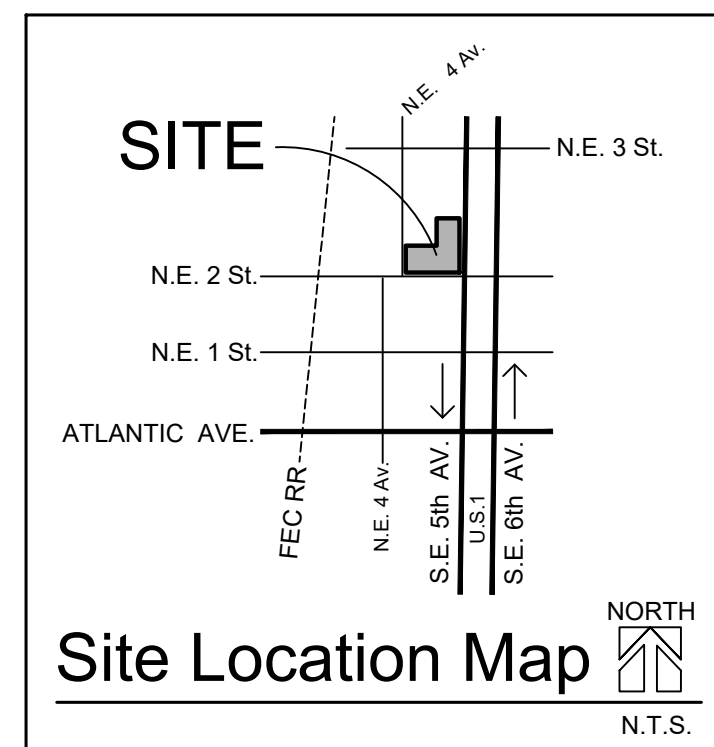


1. All prohibited plant species shall be eradicated from the development site and reestablishment of prohibited species shall not be permitted.
2. Any trees or shrubs placed within water, sewer, or drainage easements shall conform to the City of Delray Beach Standard Details; LD 1.1 & LD 1.2., see LP-2.



Palms	
Rating	Quant.
0-49%	6 (1:1 replacement)
50-100%	5 (1:1 replacement, min. 16' ht.)
Total - 11	Replaced by this plan = 6 palms @16' ht.



* = Native to Florida

Abbreviations:

c.t. - clear trunk	ht. - height
gal. - gallon	o.c. - on-center spacing
g.w. - grey wood	o.a. - overall
	spr. - spread

1. The Contractor is responsible to verify all plant quantities and report any discrepancies to the Landscape Architect.
2. Drought tolerance noted is per SFWMD (May 2003) "Waterwise" South Florida Edition or University of Florida IFAS Extension Service, as applicable.

[illegible]

**Covelli
Design
Associates Inc.**
Urban Planning ♦ Landscape Architecture

2295 NW Corporate Blvd., Suite 213
Boca Raton, Florida 33431
561-910-0330

LC 26000287
covellidesign.com

Landscape Plan
PHG DELRAY
Delray Beach Florida

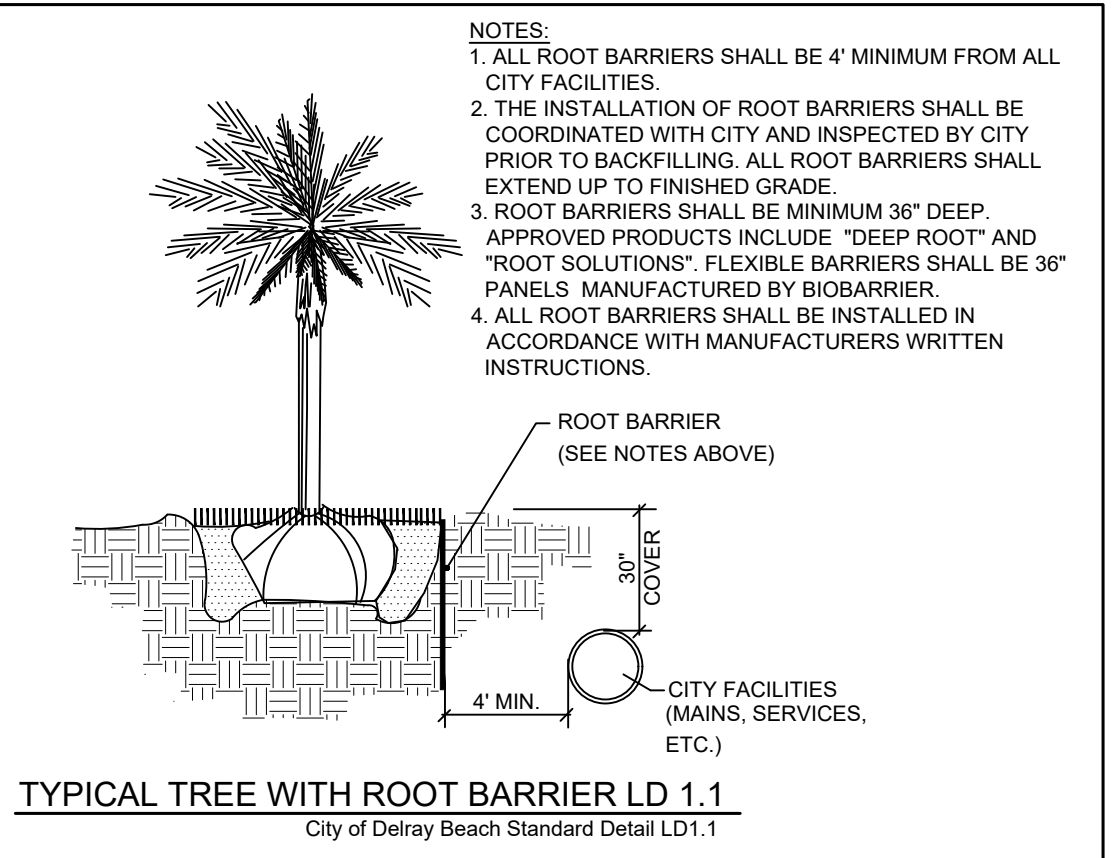
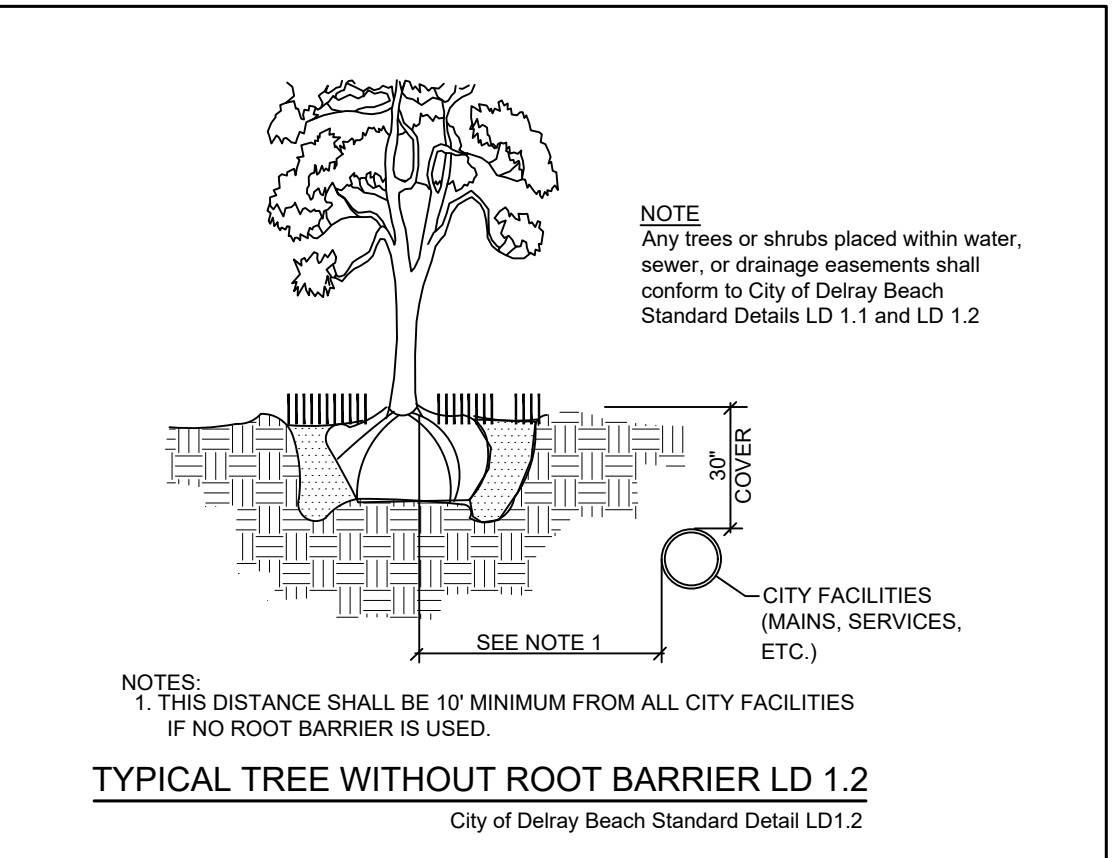
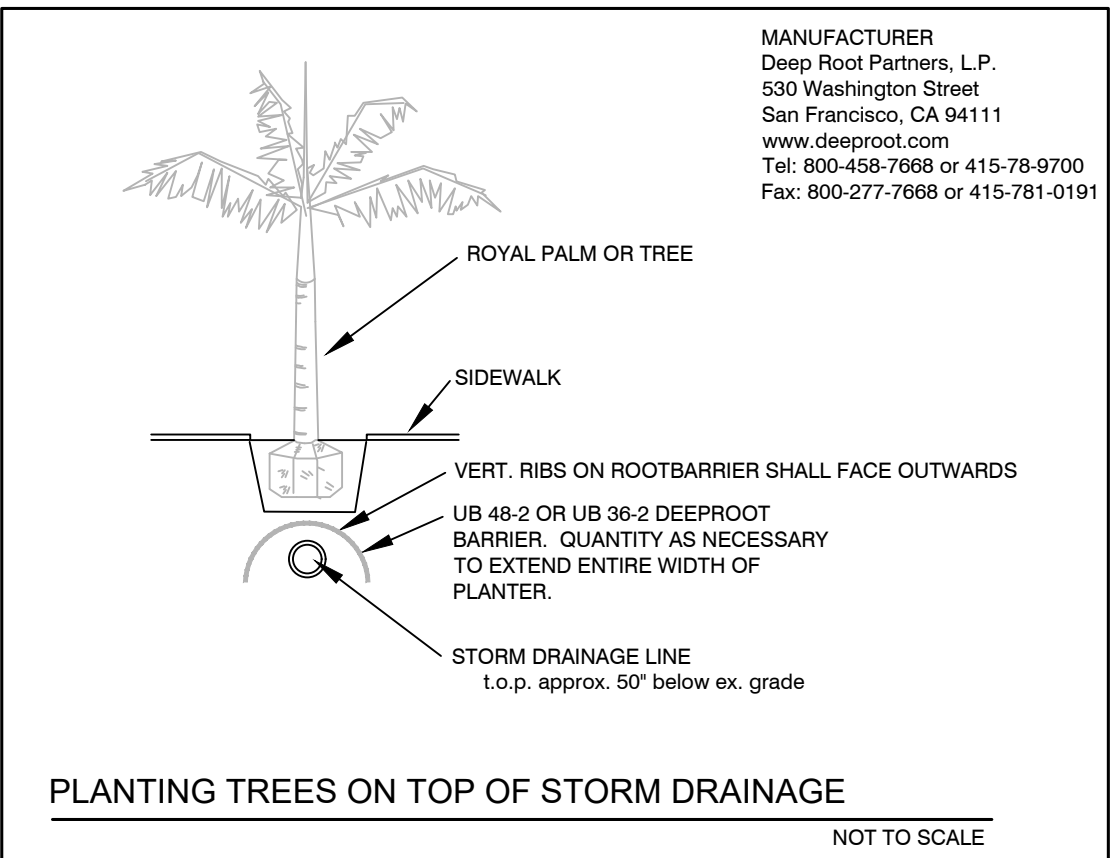
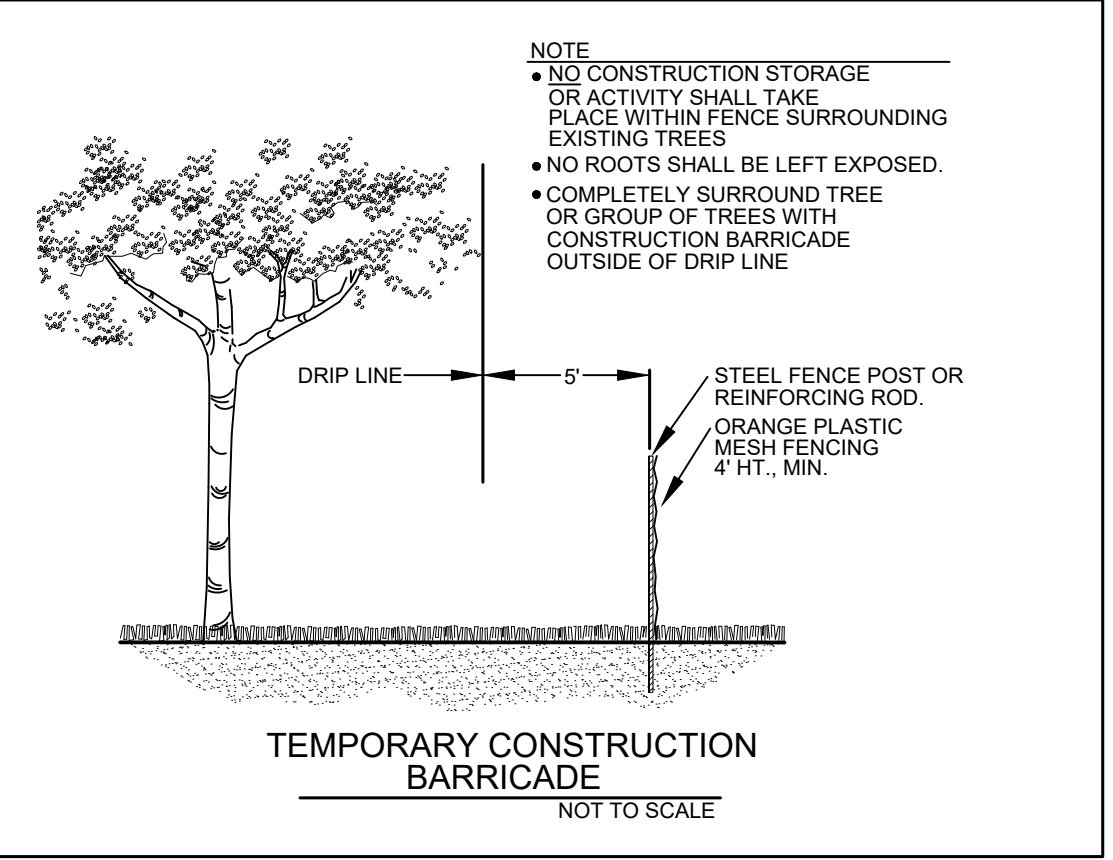
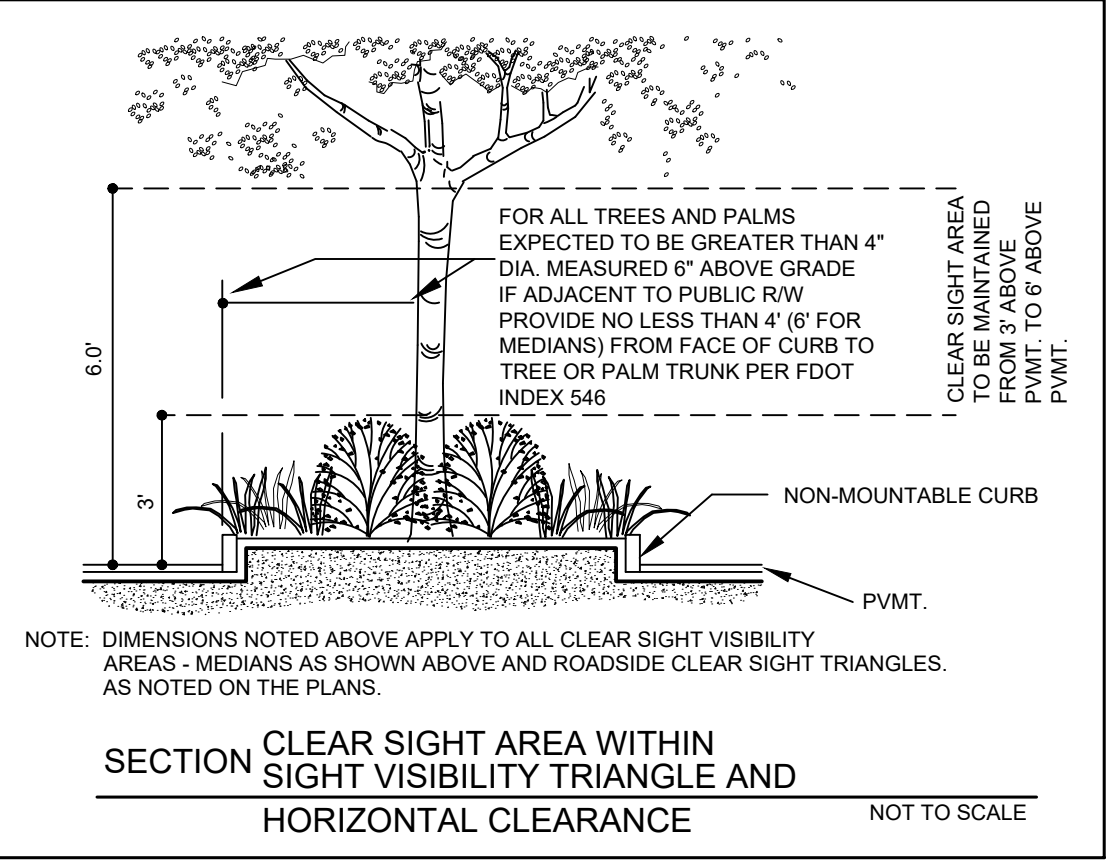
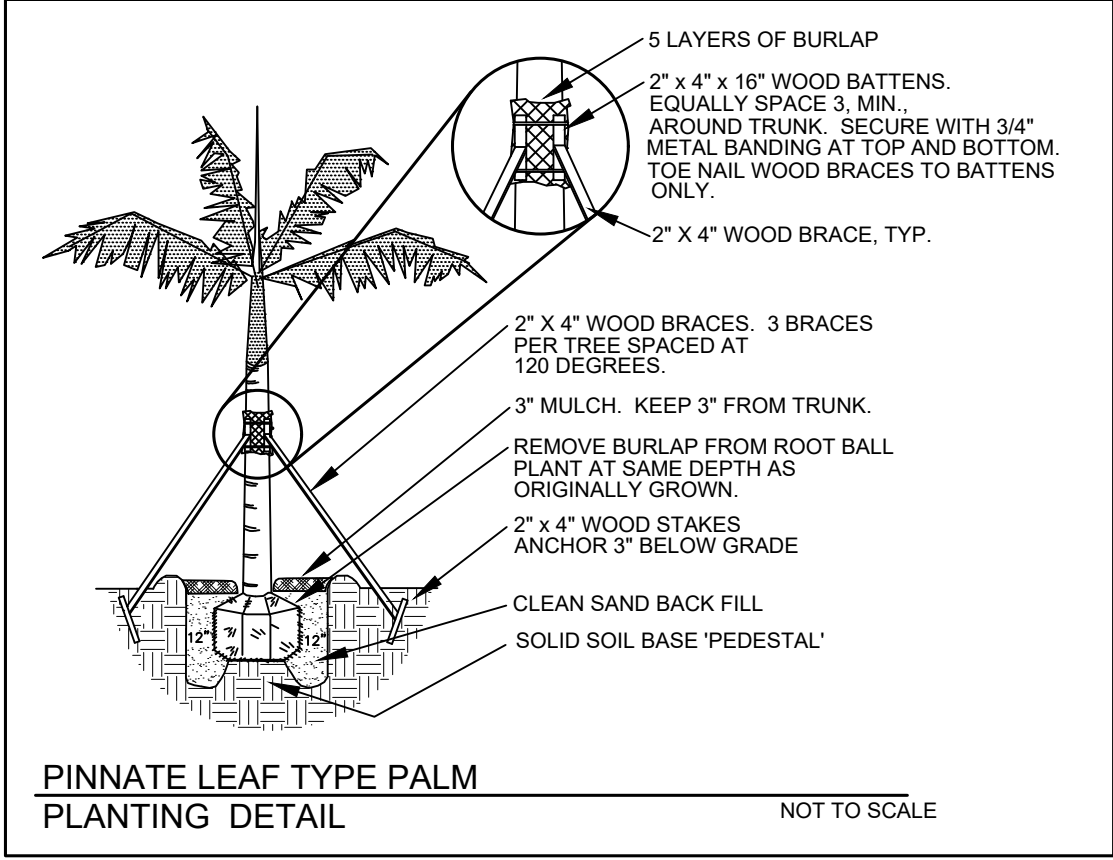
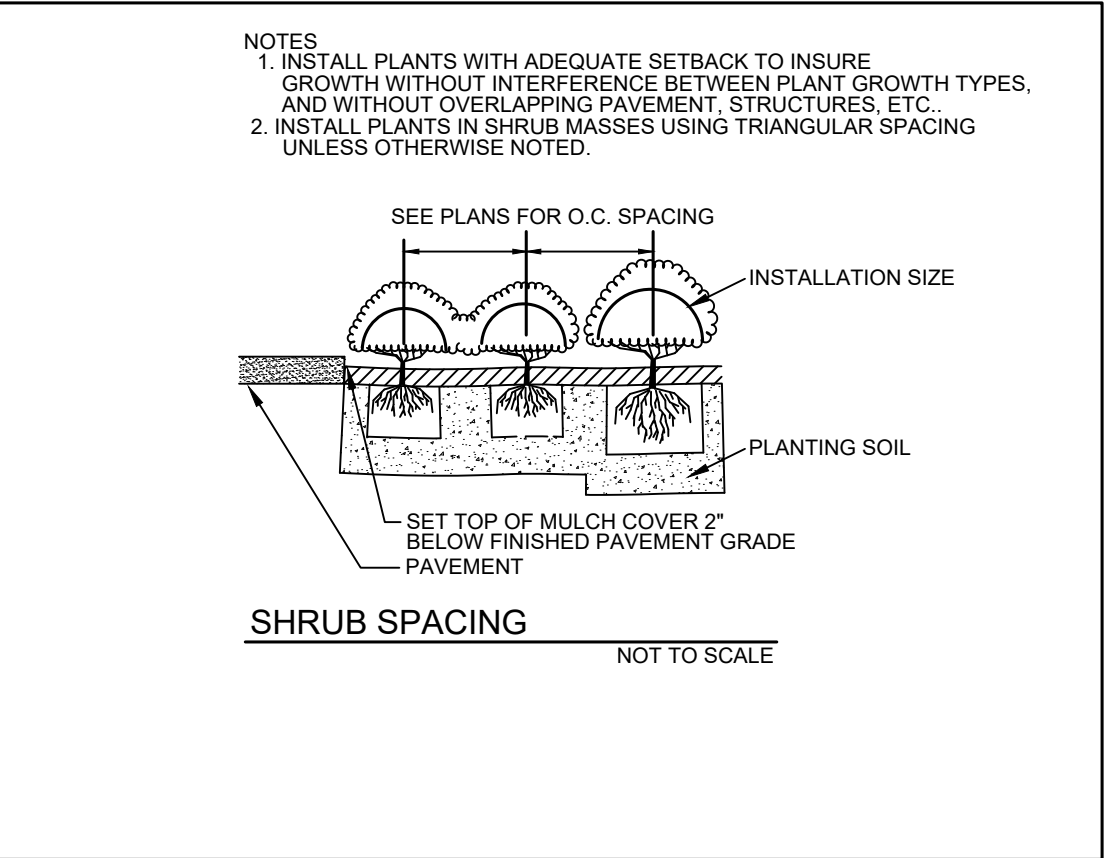
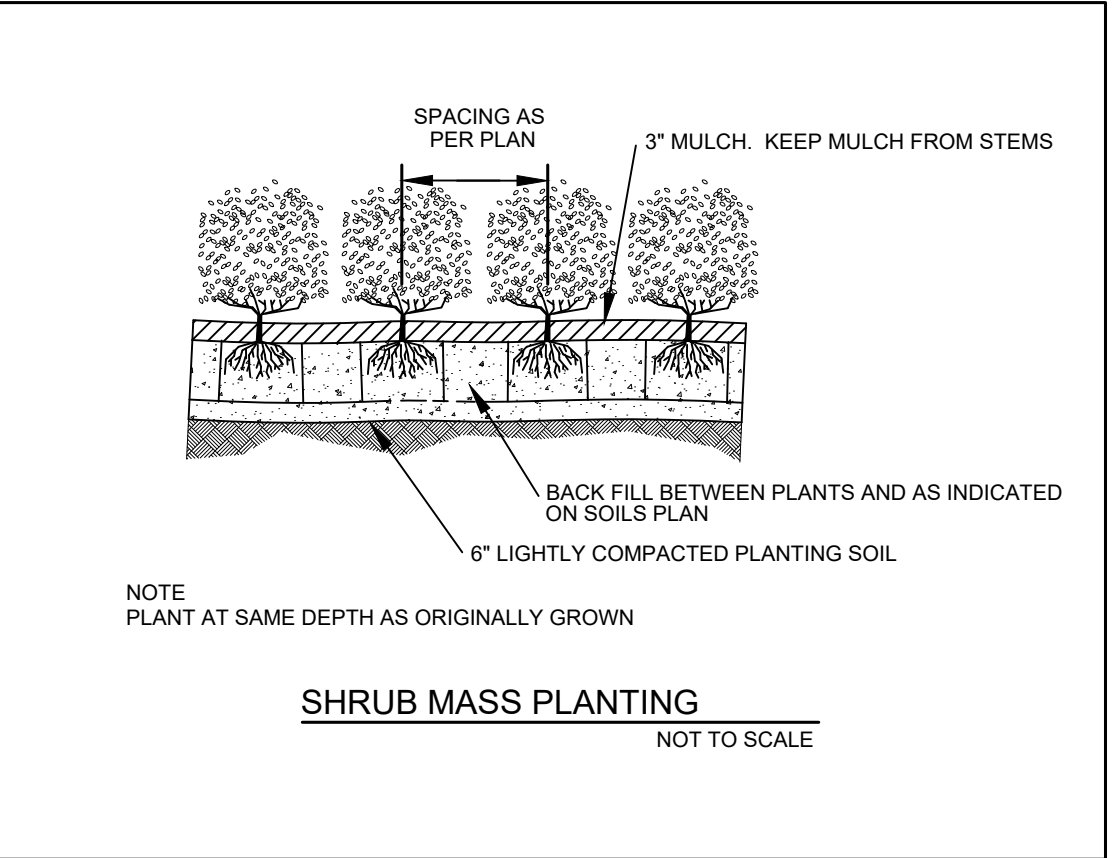
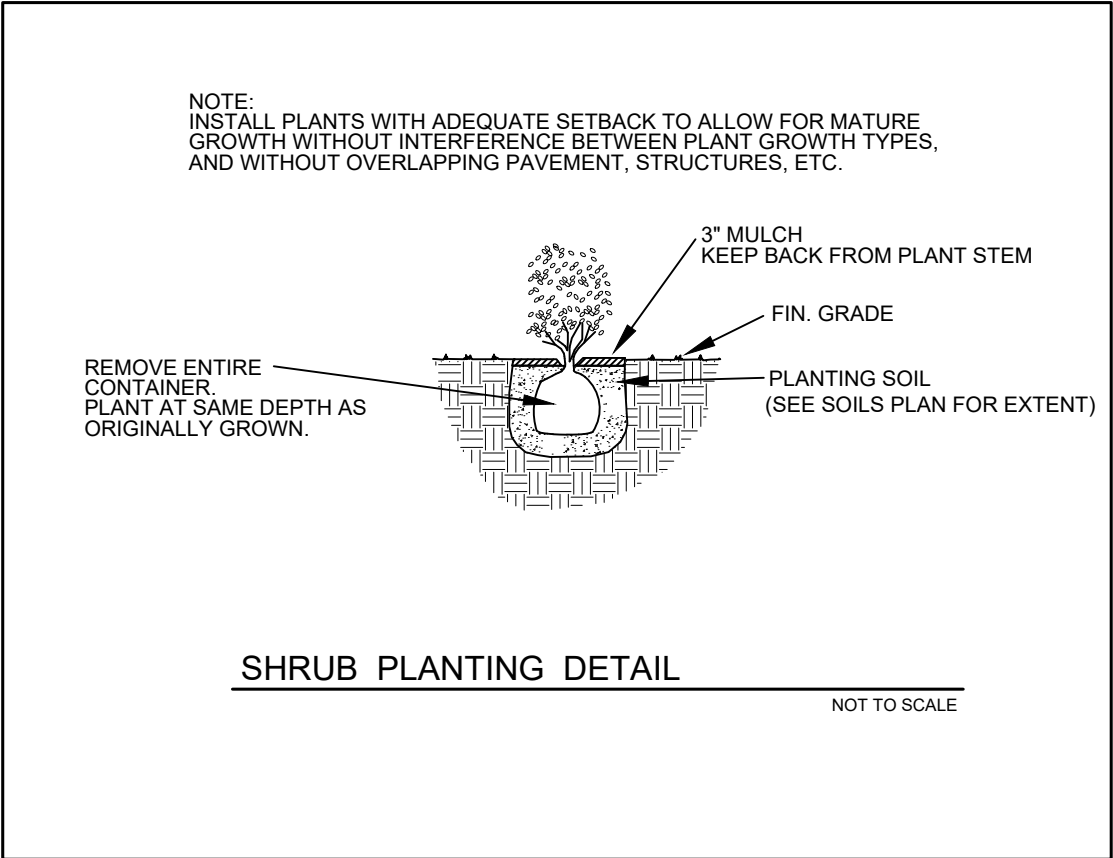
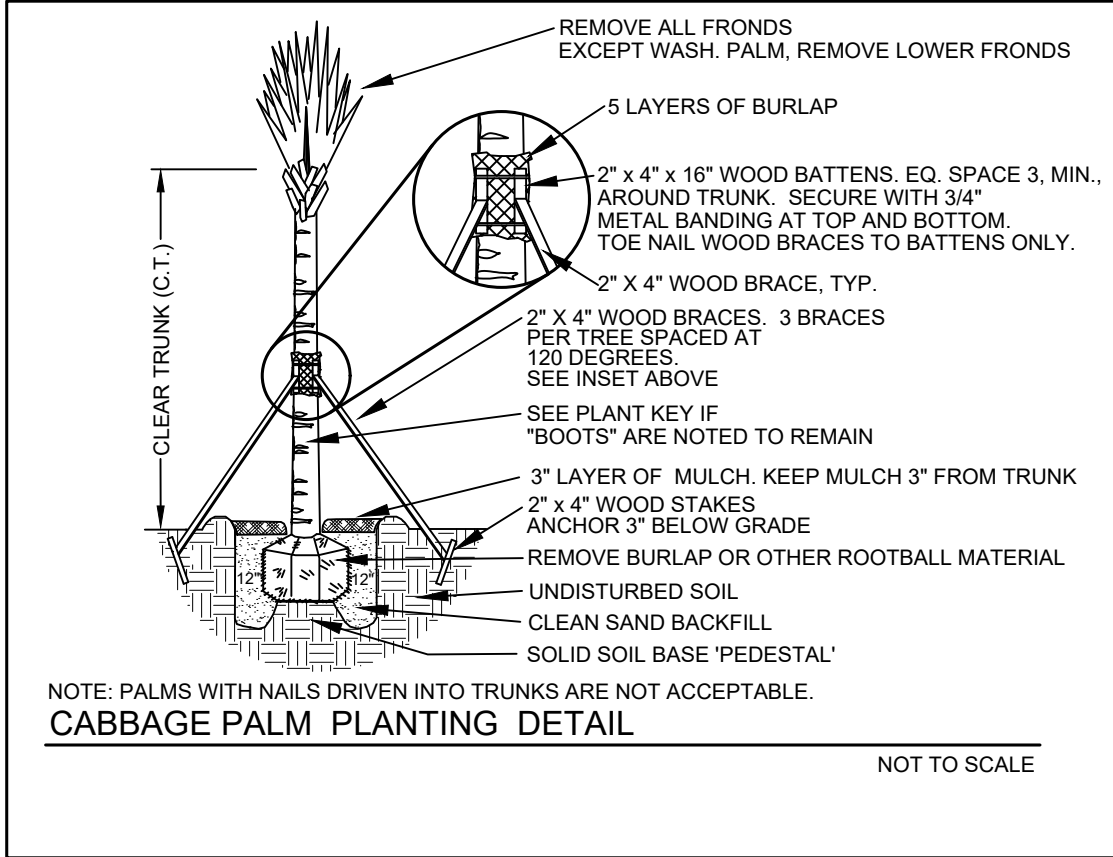
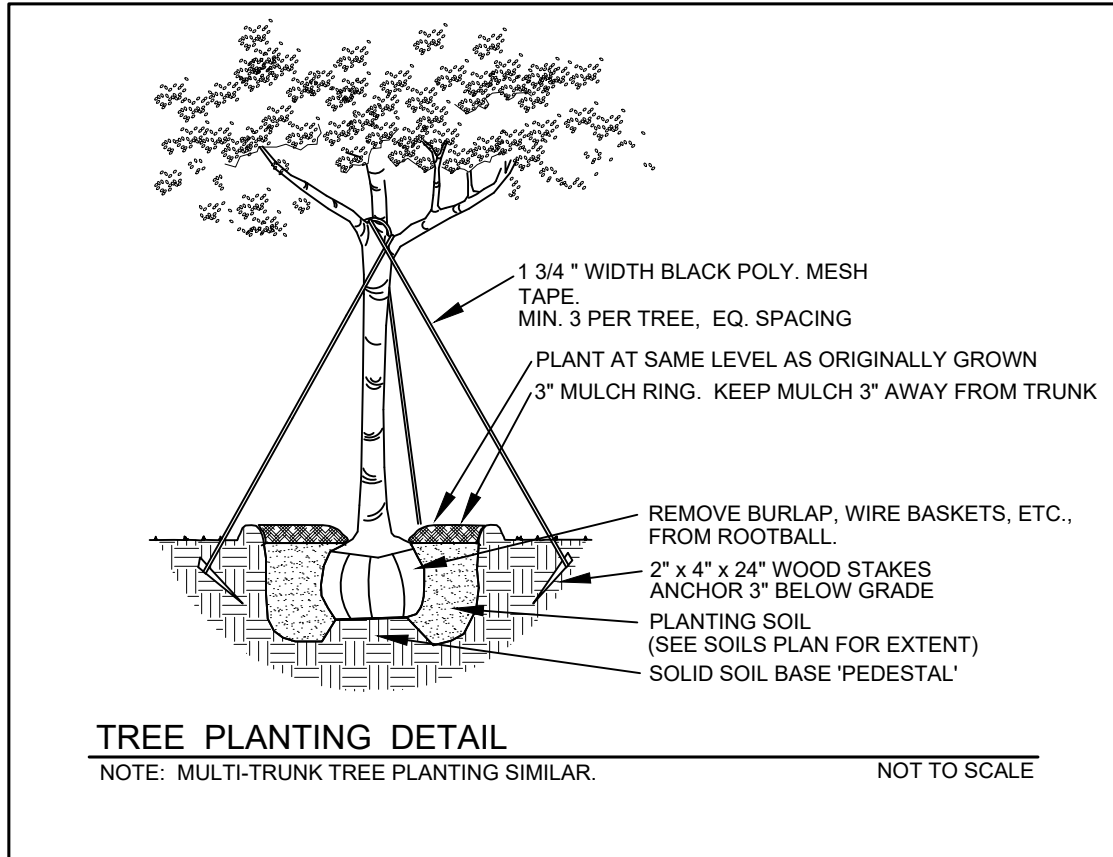
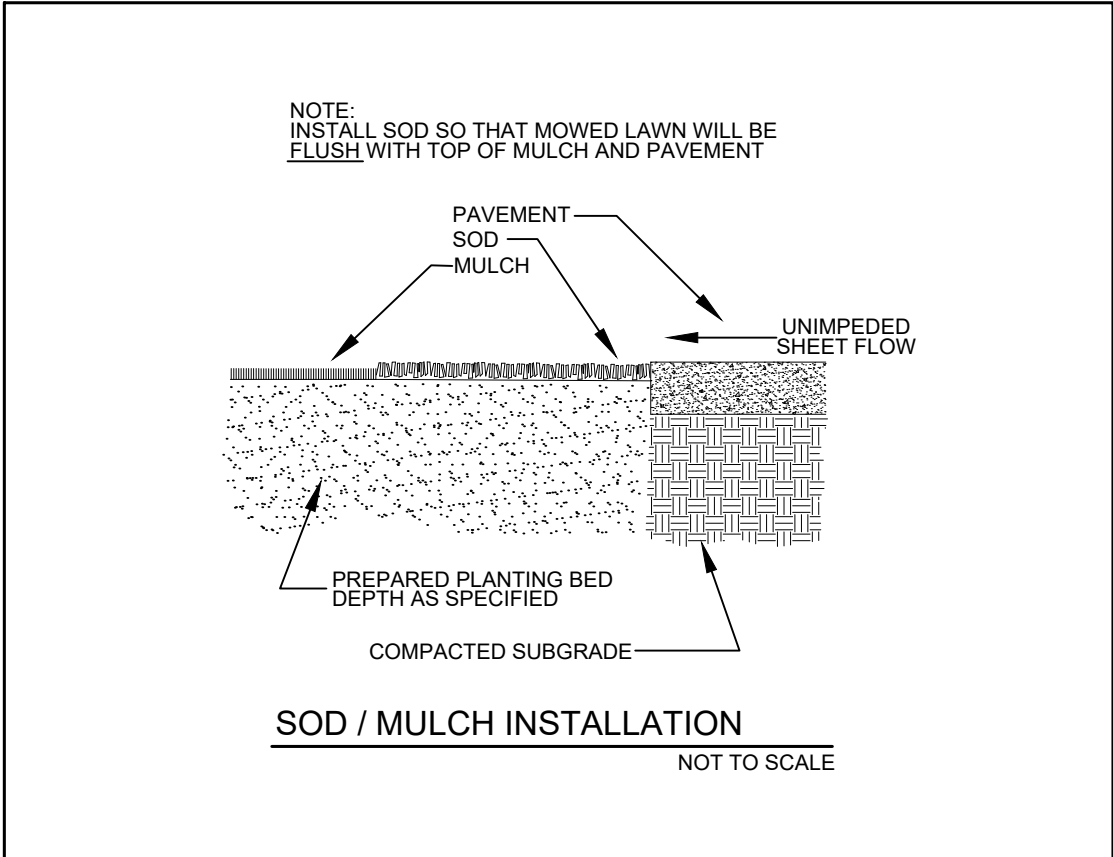
Date	06-26-2019
Scale	As Noted
PN#	1235

PREPARED BY

Steven E. Tate, RLA
Landscape Architect #967
State of Florida
For The Firm

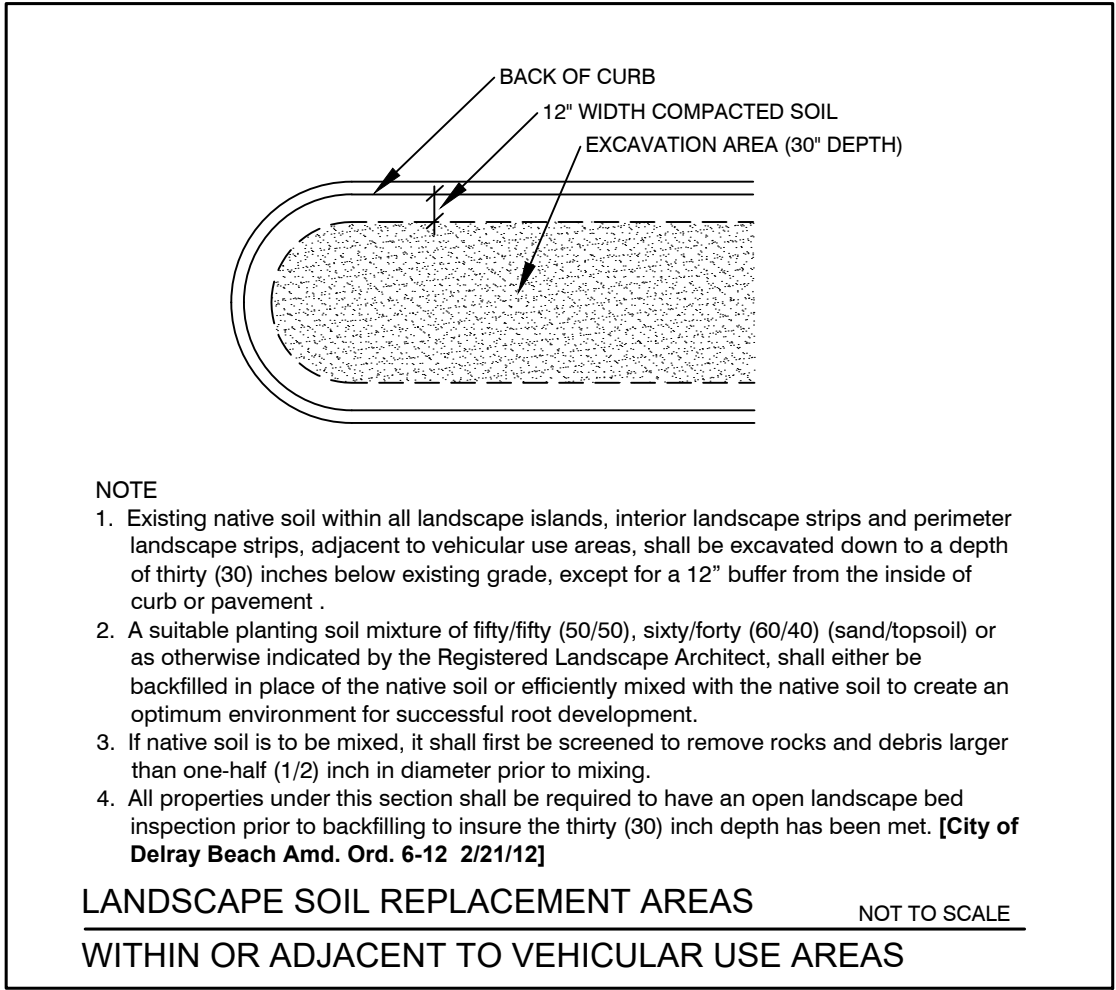
DATE 10-01-2019

Drawing No.
LP-1
OF 2



Landscape Tabulations (Alexander Palms counted as 3:1 trees)

A. TOTAL LOT AREA	50,637 s.f.
B. STRUCTURES, PARKING WALKWAYS, DRIVES, ETC.	49,955 s.f.
C. TOTAL PERVIOUS LOT AREA	4,682 s.f.
D. AREA OF SHRUBS & GROUNDCOVERS REQUIRED	1,405 s.f. (30% of "C")
E. AREA OF SHRUBS & GROUNDCOVERS PROVIDED	1,877 s.f. (over pervious areas only)
F. NATIVE VEGETATION REQUIRED	351 s.f. (25% of "D")
G. NATIVE VEGETATION PROVIDED	626 s.f.
H. TOTAL PAVED VEHICULAR USE AREA	11,704 s.f.
I. TOTAL INTERIOR LANDSCAPE AREA REQUIRED	1,141 s.f. (10% of "H")
J. TOTAL INTERIOR LANDSCAPE AREA PROVIDED	721 s.f.
K. TOTAL INTERIOR SHADE TREES REQUIRED	9 (1/125)
L. TOTAL INTERIOR SHADE TREES PROVIDED	3
M. TOTAL L.F. SURROUNDING PARKING OR VEHICULAR USE AREA	328 l.f.
N. TOTAL NUMBER OF PERIMETER TREES REQUIRED	13 (328/25)
O. TOTAL NUMBER OF PERIMETER TREES PROVIDED	3
P. TOTAL NUMBER OF EX. TREES TO BE SAVED ON SITE	0
Q. TOTAL NUMBER OF NATIVE TREES REQUIRED	11 (50% of total required trees) (K+N x 0.5)
R. TOTAL NUMBER OF NATIVE TREES PROVIDED	6
S. TOTAL NUMBER OF OF TREES ON PLAN PROVIDED	11



ALWAYS CALL TWO FULL BUSINESS DAYS BEFORE YOU DIG
sunshine 811.com



Know what's below.
Call before you dig.

Standard Landscape Notes

- All landscape and specifications shall meet or exceed the minimum requirements as provided by the City of Delray Beach Land Development Code.
- All planting material shall meet or exceed Florida Grade #1 as specified in Grades and Standards for Nursery Plants, current edition.
- All sizes shown for plant material on the plan are to be considered as minimums. All plant material must meet or exceed these minimum requirements for both height and spread. Any other requirements for specific shape or effect as noted on the plan will also be required for acceptance.
- Landscape shall be placed to edge of abutting ROW, canals, lakes or other lands.
- All mechanical equipment, air conditioning, irrigation pump stations and equipment, fpl transformers, pool pumps, etc. must be screened on three (3) sides by landscape shrubs. Note: the quantity of screening shrubs may be in addition to the required number of shrubs as provided in the code calculation table. All screening shrubs shall be planted for proper operation of equipment being screened and/or per the requirements of the utility as necessary.
- Guying/staking practices shall not permit nails, screws, wires, etc. to penetrate outer surfaces of trees, palms or other planted material. Trees, palms and plant material will be rejected due to this practice.
- Burlap material, wire cages, plastic/canvas straps, etc. must be cut and removed for the top one-half (1/2) depth of the root ball. Trees and shrubs grown in grow bags or grow bag type material must have such material removed entirely prior to planting the tree or shrub.
- All plant material shall be free of pests, insects, disease, weeds, etc.
- All plant material shall be planted at the proper depths, as originally grown and/or so the top of the root ball is flush or slightly above finished grade immediately after planting. All trees should provide trunk taper when properly planted at the correct planting depth.
- All plant material shall be watered in at time of planting to eliminate air pockets in the root zone area.
- Upon completion of work, the site shall be cleared of all debris, superfluous materials, and equipment caused by this permit.
- All landscaped areas shall be provided with an underground fully automatic irrigation system using pop-up sprinklers. System shall provide 100% coverage with a 75% overlap (minimum) using rust-free water, except any preserved areas remaining in natural state. A rain sensor device or switch shall be installed that will override the irrigation system when adequate rainfall has occurred. Water shall not be directed and/or provided onto impervious surfaces and/or be designed or installed to throw water over an impervious surface such as a sidewalk, etc. Hours of operation for all irrigation systems shall be limited to 5:00 p.m. to 8:00 a.m. only or as may be further restricted by South Florida Water Management District or other jurisdictional agency.
- All plant material and work shall be guaranteed for one-year from date of final job acceptance. During the one year guarantee, any plant material that dies or is in an unhealthy condition shall be replaced with the same plant type at least equal to the size and quality originally specified. The replacement material shall also be guaranteed for one year from the date of its installation. The guarantee will be null and void if plant material is damaged or killed by lightning, hurricane force winds, hail or freeze.
- The landscape contractor is responsible for verifying there are no conflicts with above or below ground utilities prior to commencing landscape installation. Notify owner if conflicts exist.
- Any trees to remain shall be pruned in such a way to promote proper horticultural and natural tree growth.
- All trees and palms placed closer than 10' from underground utilities shall receive root barrier. See detail this sheet.
- Ground covers shall be spaced as noted or to insure ground cover within 6 months of planting.
- Place sod on smooth sod bed. Remove any rocks and other debris prior to sodding. Sod shall be placed so there are no gaps or voids between pieces. On slopes place sod at 90° to slope direction. Stake sod or otherwise ensure its establishment on slopes.
- Mulch shall be eucalyptus or melaleuca mulch. All trees in sod areas are to have a 30" ring covered with a 3" layer of mulch. Cover all shrub beds with a 3" layer of mulch. Mulch shall not touch tree, palm or shrub trunks or stems.
- All plant material shall be fertilized with a tablet form balanced fertilizer containing minor elements. Follow manufacturer's recommendations for rates. sod areas shall be fertilized with a granular form balanced fertilizer with minor elements following manufacturer's recommendations for rates.
- Planting soil shall be a mix of 1/3 native soil, 1/3 clean sand & 1/3 peat as shown on the planting plan. If native soil is unacceptable, contact landscape architect.
- Reinforced concrete curbing at least 6" in height shall be provided around all landscape islands and as a separator between all landscape areas that are adjacent to vehicular use areas unless such curbing will interfere with the drainage the drainage.
- The landscape irrigation system shall utilize reclaimed water, when available and where allowed by Florida Statutes, from one master meter located at the property line. Coordinate location and service with the City of Delray Beach Public Utilities Department.

Landscape Plan & Details

PHG DELRAY

Florida

Delray Beach

Date 06-26-2019
Scale As Noted
PN# 1235

PREPARED BY

Steven E. Tate, R.L.A.
Landscape Architect #967
State of Florida
For The Firm

DATE 10-01-2019

Drawing No.

LP-2
OF 2

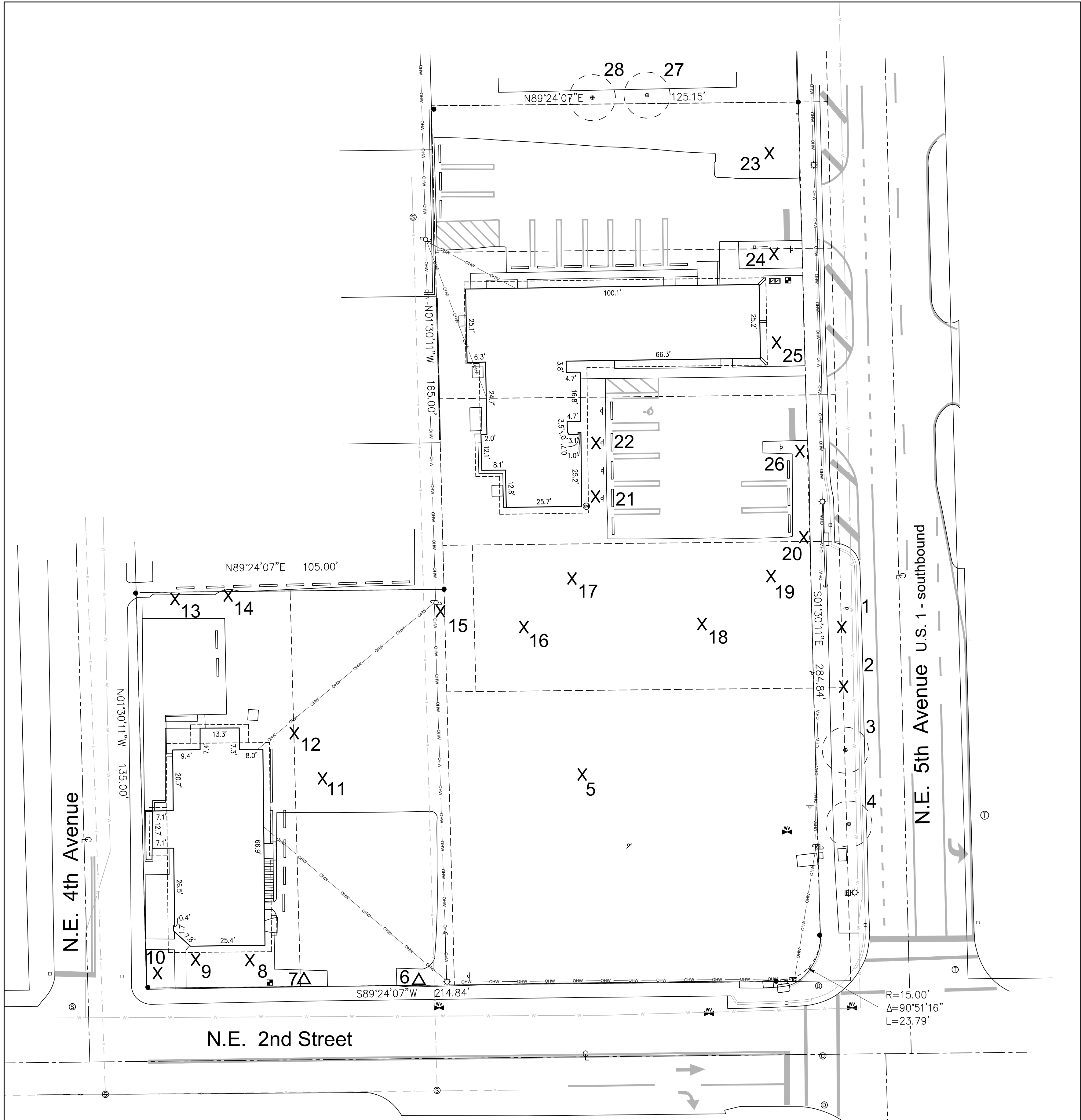
2295 NW Corporate Blvd., Suite 213
Boca Raton, Florida 33431
561-910-0330

Covelli
Design
Associates Inc.

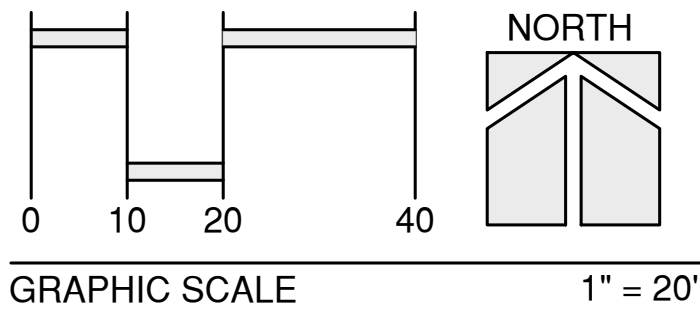
LC 2600287
covelldesign.com

Urban Planning • Landscape Architecture

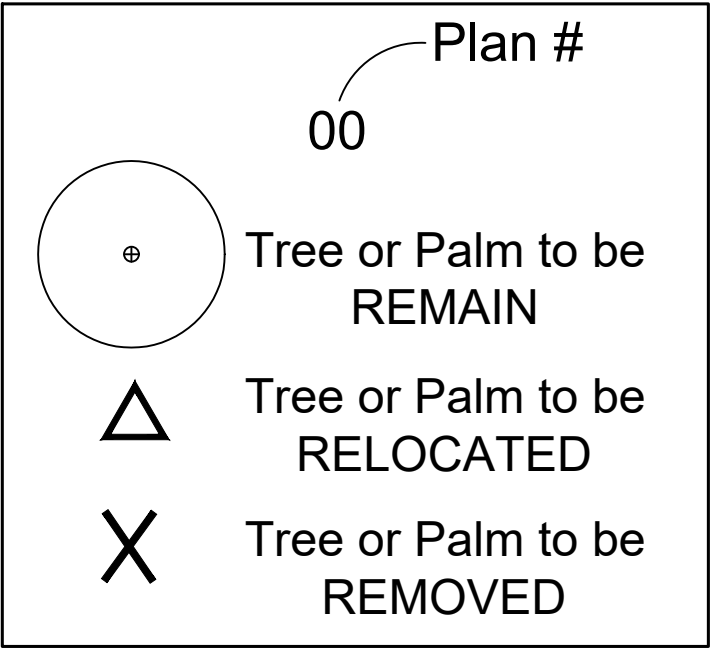
Revisions



Existing Tree Location Plan



Plan Key



Tree List

Plan #	Botanic Name	Common Name	d.b.h.	Ht.	Canopy	Cond.	Disposition
1	Velichia merillii	Velichia palm	-	14'	-	50%	Remove
2	Velichia merillii	Velichia palm	-	12'	-	50%	Remove
3	Velichia merillii	Velichia palm	-	14'	-	50%	Remain
4	Velichia merillii	Velichia palm	-	14'	-	50%	Remain
5	Sabal palmetto	Cabbage Palm	-	12'	-	40%	Remove
5A	Coccoloba uvifera	Sea Grape tree	22" multi-trunk	17'	12'	20%	Remove
6	Quercus virginiana	Live Oak tree	18"	20'	28'	50%	Relocate
7	Quercus virginiana	Live Oak tree	12"	25'	28'	55%	Relocate
8	Wodyetia biluncata	Football palm	-	10'	-	30%	Remove
9	Wodyetia biluncata	Football palm	-	10'	-	30%	Remove
10	Coccothrinax	Coconut palm	-	15'	-	45%	Remove
11	Sabal palmetto	Sabal palm	-	14'	-	45%	Remove
12	Schefflera actinophylla	Umbrella tree	8"	14'	8'	35%	Remove
13	Quercus virginiana	Live Oak tree	18" Total	30'	35'	50%	Remove
14	Coccothrinax	Coconut palm	-	17"	-	48%	Remove
15	Pithecellobium dulce	Manilla Tamarind tree	10"	25'	20'	20%	Remove
16	Mangifera indica	Mango tree	25"	35'	40'	55%	Remove
17	Mangifera indica	Mango tree	27"	35'	25'	25%	Remove
18	Pithecellobium dulce	Manilla Tamarind tree	31"	44'	50'	25%	Remove
19	Pinus elliotii	Slash Pine tree	14"	30'	15'	40%	Remove
20	Sweikenia mahagoni	Mahogany tree	24"	24'	20'	15%	Remove
21	Velichia merillii	Velichia palm (triple)	-	Aug. 16'	-	50%	Remove
22	Velichia merillii	Velichia palm (triple)	-	Aug. 16'	-	50%	Remove
23	Quercus virginiana	Live Oak tree	24"	20'	35'	60%	Remove
24	Quercus virginiana	Live Oak tree	17"	20'	30'	60%	Remove
25	Velichia merillii	Velichia palm (double)	-	Aug. 16'	-	55%	Remove
26	Sweikenia mahagoni	Mahogany tree	30"	30'	40'	15%	Remove
27	Sweikenia mahagoni	Mahogany tree	13"	20'	18'	50%	TBD
28	Sweikenia mahagoni	Mahogany tree	21"	30'	30'	60%	TBD

Removal & Mitigation Summary

Trees & Palms to Remain - 2 in 5th Av. r/w & 2" TOTAL TREES & PALMS - 29
*Tree #'s 27 & 28 are offsite and removal to be determined

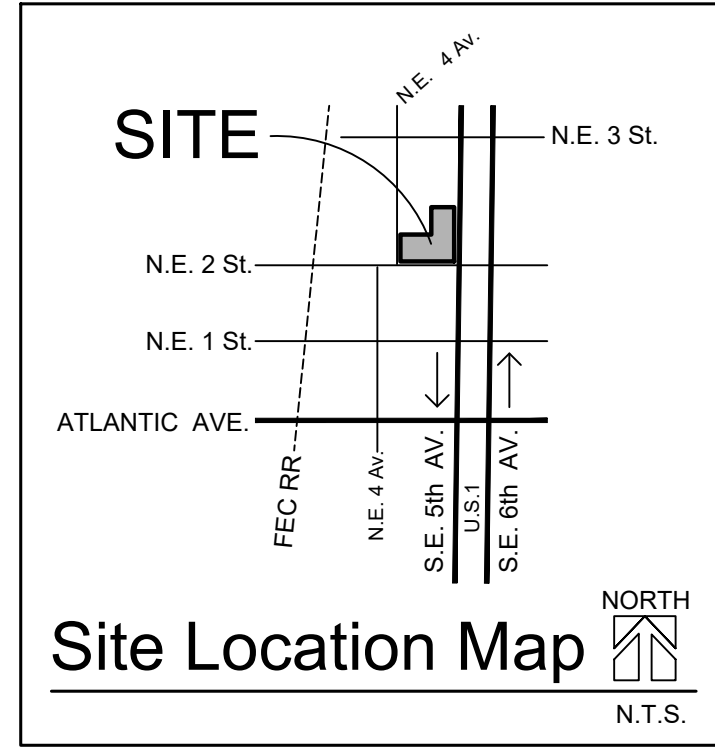
Trees to be Relocated - 2 (tree #'s 6 & 7)

Trees & Palms to Remove - 23

Trees
Rating Quant.
0-49% 8 (1:1 replacement)
50-100% Replaced by this plan = 8 trees
4 (84" replacement)
Replaced by this plan = 85"

Total - 12

Palms
Rating Quant.
0-49% 6 (1:1 replacement)
50-100% 5 (1:1 replacement, min. 16' ht.)
Total - 11 Replaced by this plan = 6 palms @16' ht.



NOTE

This Tree Disposition Plan is based on a Tree Survey prepared by Caulfield & Wheeler, Inc., dated 01-20-2019 and A Tree Survey Assessment prepared by James LaGette, Certified Arborist, dated 07-29-2019.

ALWAYS CALL TWO FULL BUSINESS DAYS BEFORE YOU DIG
sunshine 811.com



Know what's below.
Call before you dig.

Covelli Design Associates Inc.
2295 NW Corporate Blvd., Suite 213
Boca Raton, Florida 33431
561-910-0330
LC 26000287
covelldesign.com
Urban Planning • Landscape Architecture

Tree Disposition Plan
PHG DELRAY
Delray Beach
Florida

Date 06-26-2019
Scale As Noted
PN# 1235

PREPARED BY
Steven E. Tate, RLA
Landscape Architect #967
State of Florida
For The Firm
DATE 10-01-2019

Drawing No.
TD-1
OF 1

Revisions

SET
Revised per TAC review dated 07-29-19

09-27-19