



AERIAL PHOTOGRAPH
(NOT-TO-SCALE)



SCALE: 1" = 20'

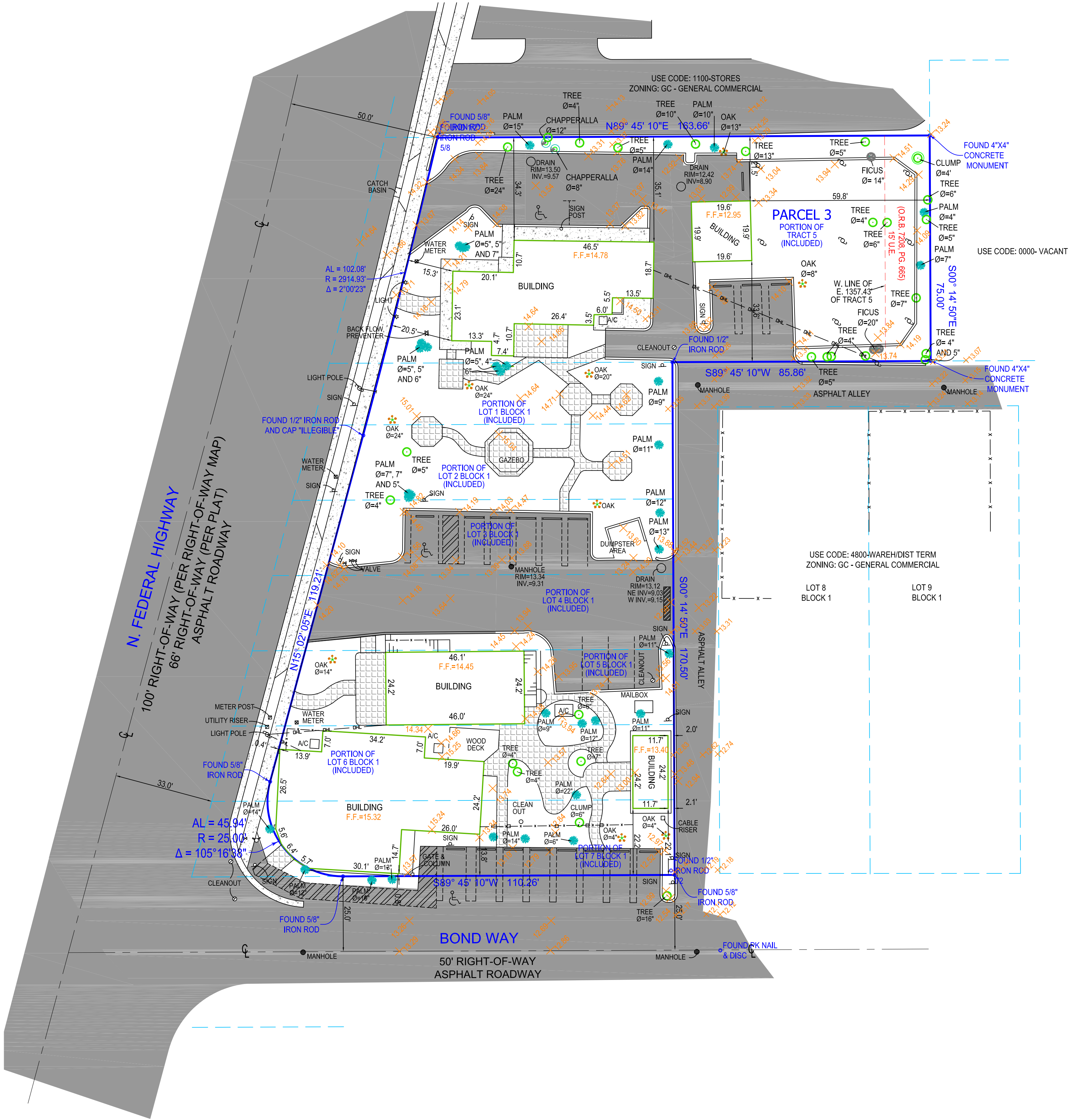
LEGEND:

- OVER HEAD CABLE
- A/C - AIR CONDITIONER
- AL - ARC LENGTH
- (C) - CALCULATED
- D.E - DRAINAGE EASEMENT
- (M) - MEASURED
- P.O.B. - POINT OF BEGINNING
- P.O.C. - POINT OF COMMENCING
- P.B. - PLAT BOOK
- P.G. - PAGE
- P.U.E. - PUBLIC UTILITY EASEMENT
- R - RADIUS
- (C) - RECORD
- U.E. - UTILITY EASEMENT
- WM - WATER METER
- FENCE
- # - NUMBER
- ASPHALT
- CONCRETE
- PAVER/BRICK
- WOOD
- LIGHT POLE
- WELL
- WATER VALVE
- CENTER LINE
- CATCH BASIN
- FIRE HYDRANT
- POLE
- MANHOLE
- TOPOGRAPHIC ELEVATION

SURVEYOR NOTES:

- NOT NOTABLE CONDITIONS
FOUND

- ELEVATION SHOWN HEREON ARE
BASED ON DATUM OF N.A.V.D. 1988



I HAVE REVIEWED WESTCOR LAND TITLE INSURANCE COMPANY COMMITMENT B-2, PLANT # 15-58401, REINSURANCE # 107408, AGENT # 51188.012, DATED: 12/16/2015 AND HAVE ADDED ALL PLOTTABLE ITEMS HEREON.

- ALL ANGLES AND DISTANCES SHOWN HEREON ARE BOTH RECORD AND MEASURED UNLESS OTHERWISE NOTED

LEGAL DESCRIPTION:

PARCEL 1
LOTS 1,2,3,4 AND 5, BLOCK 1, LESS THE WEST 17 FEET THEREOF, KENMONT, ACCORDING TO THE PLAT THEREOF, RECORDED IN PLAT BOOK 20, PAGE 65, PUBLIC RECORDS OF PALM BEACH COUNTY, FLORIDA.

PARCEL 2:
LOTS 6 AND 7, BLOCK 1, LESS THE WEST 17 FEET THEREOF, KENMONT, ACCORDING TO THE PLAT THEREOF RECORDED IN PLAT BOOK 20, PAGE 65, PUBLIC RECORDS OF PALM BEACH COUNTY, FLORIDA.

PARCEL 3
ALL THAT PART OF TRACT 5, HARRY SEEMILLER SUBDIVISION OF PARTS OF LOTS 36, 1, 2, AND 3 OF SECTION 9, TOWNSHIP 46 SOUTH, RANGE 43 EAST, ACCORDING TO THE PLAT THEREOF, RECORDED IN PLAT BOOK 9, PAGE 72, OF THE PUBLIC RECORDS OF PALM BEACH COUNTY, FLORIDA, DESCRIBED AS FOLLOWS, TO WIT:

BEGINNING AT A POINT WHERE THE SOUTH BOUNDARY LINE OF SAID TRACT 5 INTERSECTS THE EAST BOUNDARY LINE OF FEDERAL HIGHWAY AND RUNNING THENCE EAST ALONG THE SOUTH BOUNDARY LINE OF TRACT 5, A DISTANCE OF 200 FEET; THENCE DUE NORTH A DISTANCE OF 75 FEET; THENCE WEST PARALLEL WITH THE SOUTH LINE OF SAID TRACT 5, A DISTANCE OF 200 FEET, MORE OR LESS, TO THE EAST BOUNDARY OF THE FEDERAL HIGHWAY; THENCE SOUTH ALONG THE EAST BOUNDARY LINE OF THE FEDERAL HIGHWAY TO THE POINT OF BEGINNING.

CERTIFIED TO:

DELRAY OASIS BUSINESS PARK, LLC, A FLORIDA LIMITED LIABILITY COMPANY

FLOOD ZONE:

1201920208B
EFF.10/15/1982
ZONE C

REVISIONS

1. ADDED TOPOGRAPHY : 8/25/2016
2. 1/18/2018

