

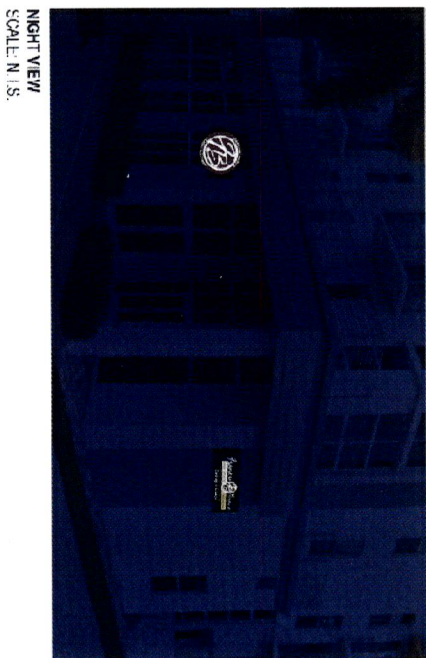
SQUARE FOOTAGE: 16



1. FABRICATED IN LUMINUM CABINET P-4 WITH 1/4" WHITE ACrylic FACE
2. 003 ALUMINUM FILLER P-1, INTERNAL ALUMINUM FRAMING AS REQD
3. 2 GRAHCS "TB AND RING TO BE 1/2" CLEAR ACrylic BONDED TO 1/4" ACrylic FACE, "TB AND RING TO HAVE FIRST SURFACE TRANSLUCENT WHITE VINYL OVERLAY P-1 H-31 SURFACE DIGITALLY PRINTED VINYL GRAPHICS P-1 "TIGRISTART SPECIALTIES" AND "COFFEE EXPERIENCE" COPY TO BE REVERSE CUT OUT AND REMAIN WHITE
- 3.1 SIGN MOUNT'S PERPENDICULAR TO CONCRETE WALL, TO UT LITE (2) 3/8 x 1/4" WALL MOUNTING ARMS P-2 BOTH WELDED TO 7 x 4 1/2 x 1/4" WALL MOUNTING PLATE P-2
- 3.2 3/8" Ø RIGID HOLES FOR FASTENERS (EXPOSED FASTENERS PAINT P-1)
4. 1.25" ALUMINUM BEARING TO ALUMINUM MOUNT P-4 (1) (2) (3) (4) (5) (6) (7) (8) (9) (10) (11) (12) (13) (14) (15) (16) (17) (18) (19) (20) (21) (22) (23) (24) (25) (26) (27) (28) (29) (30) (31) (32) (33) (34) (35) (36) (37) (38) (39) (40) (41) (42) (43) (44) (45) (46) (47) (48) (49) (50) (51) (52) (53) (54) (55) (56) (57) (58) (59) (60) (61) (62) (63) (64) (65) (66) (67) (68) (69) (70) (71) (72) (73) (74) (75) (76) (77) (78) (79) (80) (81) (82) (83) (84) (85) (86) (87) (88) (89) (90) (91) (92) (93) (94) (95) (96) (97) (98) (99) (100) (101) (102) (103) (104) (105) (106) (107) (108) (109) (110) (111) (112) (113) (114) (115) (116) (117) (118) (119) (120) (121) (122) (123) (124) (125) (126) (127) (128) (129) (130) (131) (132) (133) (134) (135) (136) (137) (138) (139) (140) (141) (142) (143) (144) (145) (146) (147) (148) (149) (150) (151) (152) (153) (154) (155) (156) (157) (158) (159) (160) (161) (162) (163) (164) (165) (166) (167) (168) (169) (170) (171) (172) (173) (174) (175) (176) (177) (178) (179) (180) (181) (182) (183) (184) (185) (186) (187) (188) (189) (190) (191) (192) (193) (194) (195) (196) (197) (198) (199) (200) (201) (202) (203) (204) (205) (206) (207) (208) (209) (210) (211) (212) (213) (214) (215) (216) (217) (218) (219) (220) (221) (222) (223) (224) (225) (226) (227) (228) (229) (230) (231) (232) (233) (234) (235) (236) (237) (238) (239) (240) (241) (242) (243) (244) (245) (246) (247) (248) (249) (250) (251) (252) (253) (254) (255) (256) (257) (258) (259) (260) (261) (262) (263) (264) (265) (266) (267) (268) (269) (270) (271) (272) (273) (274) (275) (276) (277) (278) (279) (280) (281) (282) (283) (284) (285) (286) (287) (288) (289) (290) (291) (292) (293) (294) (295) (296) (297) (298) (299) (300) (301) (302) (303) (304) (305) (306) (307) (308) (309) (310) (311) (312) (313) (314) (315) (316) (317) (318) (319) (320) (321) (322) (323) (324) (325) (326) (327) (328) (329) (330) (331) (332) (333) (334) (335) (336) (337) (338) (339) (340) (341) (342) (343) (344) (345) (346) (347) (348) (349) (350) (351) (352) (353) (354) (355) (356) (357) (358) (359) (360) (361) (362) (363) (364) (365) (366) (367) (368) (369) (370) (371) (372) (373) (374) (375) (376) (377) (378) (379) (380) (381) (382) (383) (384) (385) (386) (387) (388) (389) (390) (391) (392) (393) (394) (395) (396) (397) (398) (399) (400) (401) (402) (403) (404) (405) (406) (407) (408) (409) (410) (411) (412) (413) (414) (415) (416) (417) (418) (419) (420) (421) (422) (423) (424) (425) (426) (427) (428) (429) (430) (431) (432) (433) (434) (435) (436) (437) (438) (439) (440) (441) (442) (443) (444) (445) (446) (447) (448) (449) (450) (451) (452) (453) (454) (455) (456) (457) (458) (459) (460) (461) (462) (463) (464) (465) (466) (467) (468) (469) (470) (471) (472) (473) (474) (475) (476) (477) (478) (479) (480) (481) (482) (483) (484) (485) (486) (487) (488) (489) (490) (491) (492) (493) (494) (495) (496) (497) (498) (499) (500) (501) (502) (503) (504) (505) (506) (507) (508) (509) (510) (511) (512) (513) (514) (515) (516) (517) (518) (519) (520) (521) (522) (523) (524) (525) (526) (527) (528) (529) (530) (531) (532) (533) (534) (535) (536) (537) (538) (539) (540) (541) (542) (543) (544) (545) (546) (547) (548) (549) (550) (551) (552) (553) (554) (555) (556) (557) (558) (559) (560) (561) (562) (563) (564) (565) (566) (567) (568) (569) (570) (571) (572) (573) (574) (575) (576) (577) (578) (579) (580) (581) (582) (583) (584) (585) (586) (587) (588) (589) (590) (591) (592) (593) (594) (595) (596) (597) (598) (599) (600) (601) (602) (603) (604) (605) (606) (607) (608) (609) (610) (611) (612) (613) (614) (615) (616) (617) (618) (619) (620) (621) (622) (623) (624) (625) (626) (627) (628) (629) (630) (631) (632) (633) (634) (635) (636) (637) (638) (639) (640) (641) (642) (643) (644) (645) (646) (647) (648) (649) (650) (651) (652) (653) (654) (655) (656) (657) (658) (659) (660) (661) (662) (663) (664) (665) (666) (667) (668) (669) (670) (671) (672) (673) (674) (675) (676) (677) (678) (679) (680) (681) (682) (683) (684) (685) (686) (687) (688) (689) (690) (691) (692) (693) (694) (695) (696) (697) (698) (699) (700) (701) (702) (703) (704) (705) (706) (707) (708) (709) (710) (711) (712) (713) (714) (715) (716) (717) (718) (719) (720) (721) (722) (723) (724) (725) (726) (727) (728) (729) (730) (731) (732) (733) (734) (735) (736) (737) (738) (739) (740) (741) (742) (743) (744) (745) (746) (747) (748) (749) (750) (751) (752) (753) (754) (755) (756) (757) (758) (759) (760) (761) (762) (763) (764) (765) (766) (767) (768) (769) (770) (771) (772) (773) (774) (775) (776) (777)

- EXISTING LIGHT TO BE REMOVED
- SPECIFICATIONS TO BE VERIFIED
- ATTACHMENT, STRUCTURE TO BE VERIFIED BY ENGINEER

P-1 MAP BLACK SATIN
P-2 MAP TO MATCH EX SLING WALL, SA N (1 B.D.)
P-3 MAP TO MATCH CORPORATE BROWN COLOR SATIN (2 B.D.)
DP-1 C. 44.71, M. 74.51, Y. 87.06, K. 50.59



Sign Fabrication: Future Signs • 4057 NE 8th Avenue, Oakland Park - FL 33334 - (954) 448-0444 - ed@customartus.com • www.customartus.com • www.futuresignsinc.com

Christian Langley
Florida PE #67382
Cert of Auth #31124

Wall components & cladding:
• Zone 4: ± 40.8 psf • Zone 5: ± 51.9 psf

General - Design is in accordance with the requirements of the **FAB Bldg Code 6th Ed (2017)** for use within & outside the High Velocity Hurricane Zone (HVHZ) - This engineering certifies only the structural integrity of those systems, components, and/or other construction specified herein. - Electrical notes, details, & specifications are provided by and are the sole responsibility of the electrical contractor. No electrical review has been performed and no certification of A/C 318-174, ASCE 360-10, ASME 15.1, & NDS-15.

- All materials shall comply with the following minimum material grades as referenced in ASTM A, SPSA, or plastic-informed sources provided. - All proposed fasteners shall be S.S. or have a protective coating for corrosion protection. - All welding shall comply with AWS requirements. - Steel welds: E70XX electrodes. - Aluminum welds: 4043 filler alloy. - All steel reinforcement bars shall be Grade 6033-16 or stronger.

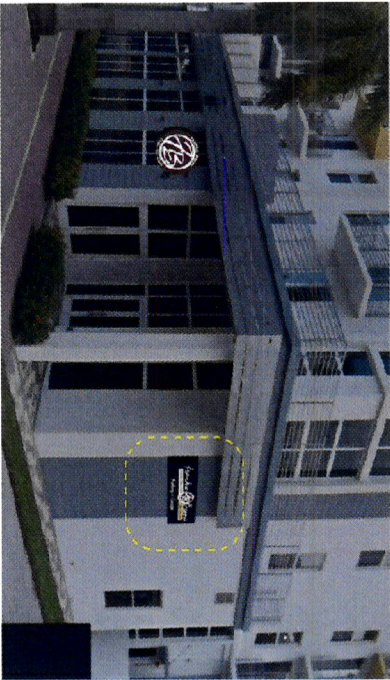
Face Lit Channel Letter with Raceway

WS.1 S/F INTERNALLY LIT WALL SIGN (QTY 1)

SQUARE FOOTAGE: 19.7



EXISTING - SOUTH ELEVATION
APPROX SCALE: 3/32" = 1'-0"



PROPOSED - SOUTH ELEVATION
APPROX SCALE: 3/32" = 1'-0"

SPECIFICATIONS

1. FABRICATED ALUMINUM CABINET WITH 1/2" ALUMINUM ROUTED FACES P-1 (6C" ALUMINUM FILLER P-1: INTERNAL ALUMINUM FARMING AS REQ'D.
2. GRAPHICS TO BE 1/2" WHITE ACRYLIC PUSH-THRU WITH FIRST SURFACE DIGITALLY PRINTED GRAPHICS DP-1
3. SIGN MOUNTS TO CONCRETE WALL - FASTENERS AS REQUIRED

COLORS/FINISHES

- P-1 MP BLACK SATIN
- DP-1 C 22 M 28 Y 71 K 3
- DP-1 C 44 71 M 74 51 Y 67 06 K 50 59

CustomART SIGNS & METAL FABRICATION	PROJECT NAME: FRANKIE BEANS		JOB LOCATION: 190 South Federal Hwy Delray Beach, FL 33483	DESIGNER: Ed Corgosinno	NOTES:
	SIGN TYPE: Front Store LED's Signs			DATE: October 24th, 2019	

Sign Fabrication: Future Signs • 4057 NE 8th Avenue, Oakland Park - FL 33334 - (954) 448-0444 - ed@customartus.com • www.customartus.com • www.futuresignsinc.com



Christian Langley
Florida PE #67382
Cert of Authority #11174

1200 N Federal Hwy, #200
Boca Raton, FL 33432
1-888-371-3113

Wall components & cladding:
• Zone 4: ± 40.8 psf • Zone 5: ± 51.9 psf

Sign Height = 30 ft max
• Kzt=1.0, Kd=0.85, G=0.85

Risk Category 2 Struct.
• ASD Load Coeff = 0.6

• V=170 mph
• Exposure 'C'

ASCE 7-10
WIND LOADS:

General - Design is in accordance with the requirements of the Fla. Bldg. Code 6th Ed (2017) for use within & outside the High Velocity Hurricane Zone (HVHZ). - This engineering certifies only the structural integrity of those systems, components, and/or other construction explicitly specified herein. - Electrical notes, details, & specifications are provided by and are the sole responsibility of the electrical contractor. No electrical review has been performed and no certification of such is intended. - Structural design meets requirements of ACI 318-14, AISI 360-10, ADMM-15, & AWS-15, as applicable. - Steel components shall be coated, painted, or otherwise protected against corrosion per RCR Sec 2.203.2.2222.6. - Aluminum components in contact with steel or embedded in concrete shall be painted or protected as prescribed in ADMM-15(1a), or plastic/impregnate spacers provided. - All exposed fasteners shall be SS, or have a protective coating for corrosion protection. - All welding shall comply with AWS requirements. - Steel welds: E70xx electrodes. - Aluminum welds: 4043 filler alloy. - Alum extrusions: 6063-T6 or stronger, U.N.O.

DIR.1 MODIFICATION TO D/F INTERNALLY LIT DIRECTIONAL SIGN (QTY 1)
SURVEY REQUIRED



EXISTING
SCALE N.T.S.

PROPOSED
SCALE N.T.S.

- SPECIFICATIONS**
1. FABRICATED ALUMINUM REPLACEMENT PAN SIGNS FOR EXISTING D/F DIRECTIONAL SIGN
 2. 126" ROUTED ALUMINUM FRAMES P-4 WITH 1/2" ALUMINUM REINFORCING
 3. GRAP-HICS TO BE PUSH-THRU ACRYLIC, DEPENDING ON PANEL SIZE SOME GRAP-HICS MAY REQUIRE MODIFICATION OR ROUTED/BACKED EXECUTION
 4. 3/4" CLEAR ACRYLIC PUSH-THRU LENS (CHARTS) TO HAVE FIRST SURFACE DIGITALLY PRINTED VINYL OVERLAY DP-1, DP-2 SECOND SURFACE DIFFUSER FILM
 5. 3/4" CLEAR ACRYLIC PUSH-THRU INFORMATIONAL GRAPHICS TO HAVE FIRST SURFACE VINYL V-1
3. PAN SIGN AT FACILITY TO BE VERIFIED BY SURVEY

NOTES

- SPECIFICATIONS REQUIRE SURVEY FOR VERIFICATION
- COLOR FINISHES

P-4	W/TO MATCH EXISTING (FIELD) SATIN
V-1	3M 3530-22 BLACK
DP-1	C: 41.71, M: 74.51, Y: 67.05, K: 50.59
DP-2	C: 39.26, M: 66.36, Y: 72.27, K: 33.2
DP-2	C: 63.54, M: 22.14, Y: 10.1, K: 5.15
DP-2	C: 53.15, M: 44.14, Y: 53.13, K: 13.67

REACTIONS ON EXISTING SUPPORT STRUCTURE & FOOTING(S) UNDER REPLACEMENT SIGN FACE(S) ARE EQUAL TO REACTIONS UNDER EXISTING FACE(S).

EXISTING FOOTING(S) & SUPPORT STRUCTURE MAY REMAIN. REPLACEMENT FACE(S) SHALL BE INSTALLED USING EXISTING CLIPS OR RETAINER SYSTEM.



Custom ART SIGNS & METAL FABRICATION	PROJECT NAME:	FRANKIE BEANS	
	SIGN TYPE:	Front Store LED's Signs	
JOB LOCATION:		DESIGNER:	
190 South Federal Hwy Delray Beach, FL 33483		Ed Corgosinno	
DATE:		NOTES:	
October 24th, 2019			

011
28
200

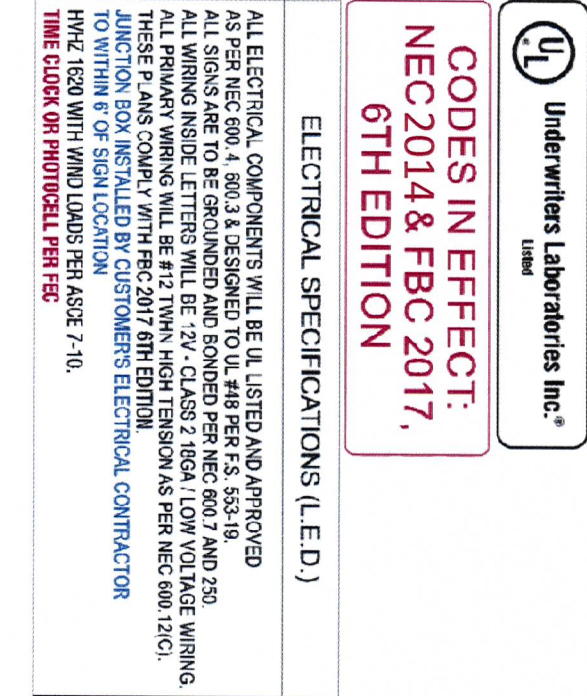
080 ALUMINUM CABINET, ALUMINUM ANGLE FRAME.
ALL JOINTS WELDED CONSTRUCTION WITH
#10 x 3/4" MIN. POSITIVE FASTEN SCREW 2" CENTERED

PRIMARY #12 MIN. THIN THWN ELECTRICAL SIGNAGE HOOKUP
5' ELECTRICAL PIGTAIL, NEC-21, INSIDE 1/4" MIN. TYPE RW
FLEXIBLE CONDUIT OR UL APPROVED EQUAL AS REQUIRED.

UL APPROVED WEATHER PROOF 20 AMP ELECTRICAL SERVICE
DISCONNECT SWITCH AS PER NEC 600.6(A)(1), CONNECTED
TO TIME CLOCK OR PHOTOCELL AS PER SFGC 4503.5C REQUIREMENTS.

EXISTING 20 AMP DISCONNECT
SWITCH AS PER NEC 600-6 LOCKOUT

UL APPROVED CONDUIT



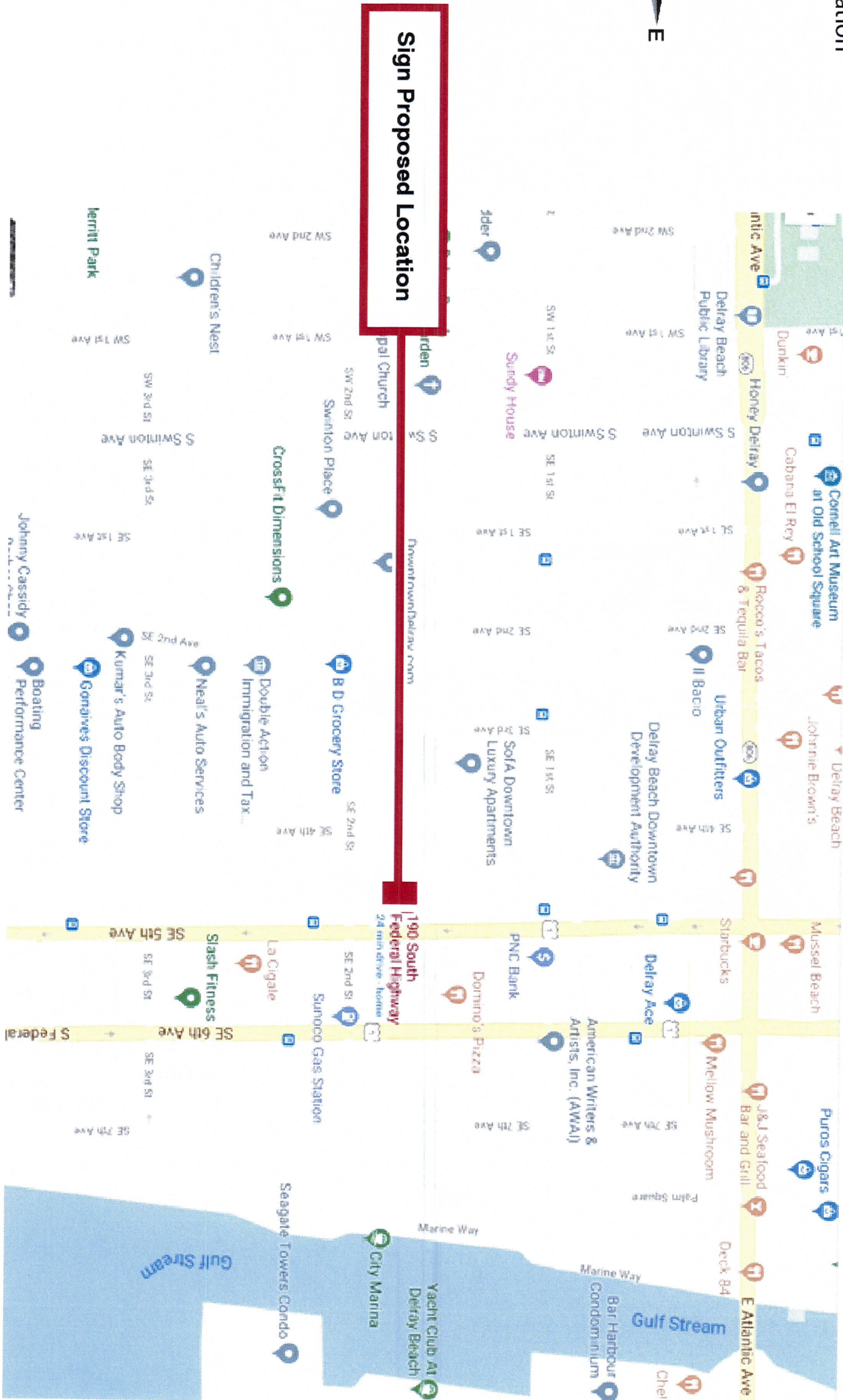
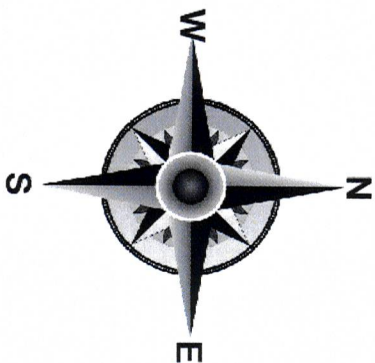
ASCE 7-10 • V=170 mph • Risk Category 2 Struct. • Sign Height = 30 ft max • Wall components & cladding:
WIND LOADS: • Exposure 'C' • ASD Load Coeff = 0.6 • Kzt=1.0, Kd=0.85, G=0.85 • Zone 4: ± **40.8 psf** • Zone 5: ± **51.9 psf**

General • Design is in accordance with the requirements of the **5 lb Bldg Code 6th Ed (2017)** for use within & outside the High Velocity Hurricane Zone (HVHZ). • This engineering certifies only the structural integrity of those systems, components, and/or other construction explicitly specified herein. • Electrical notes, details, & specifications are provided by and are the sole responsibility of the electrical contractor. No electrical review has been performed and no certification of such is intended. • Structural design meets requirements of ACI 318-14, AISI S60-10, AISC 15, & AISC 15.

Notes: • Design is in accordance with the requirements of the **5 lb Bldg Code 6th Ed (2017)** for use within & outside the High Velocity Hurricane Zone (HVHZ). • This engineering certifies only the structural integrity of those systems, components, and/or other construction explicitly specified herein. • Electrical notes, details, & specifications are provided by and are the sole responsibility of the electrical contractor. No electrical review has been performed and no certification of such is intended. • Structural design meets requirements of ACI 318-14, AISI S60-10, AISC 15, & AISC 15.

Notes: • Design is in accordance with the requirements of the **5 lb Bldg Code 6th Ed (2017)** for use within & outside the High Velocity Hurricane Zone (HVHZ). • This engineering certifies only the structural integrity of those systems, components, and/or other construction explicitly specified herein. • Electrical notes, details, & specifications are provided by and are the sole responsibility of the electrical contractor. No electrical review has been performed and no certification of such is intended. • Structural design meets requirements of ACI 318-14, AISI S60-10, AISC 15, & AISC 15.

Site Plan & Job Location



Sign Proposed Location

PROJECT NAME: FRANKIE BEANS
SIGN TYPE: Front Store LED's Signs

JOB LOCATION: 190 South Federal Hwy
Delray Beach, FL 33483

DESIGNER: Ed Corgosinno
DATE: October 24th, 2019

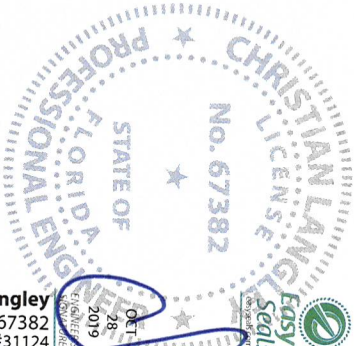
NOTES:

General - Design is in accordance with the requirements of the Fla Bldg Code 6th Ed (2017) for use within & outside the High Velocity Hurricane Zone (HVHZ). - This engineering certifies only the structural integrity of those systems, components, and/or other construction explicitly specified herein. - Electrical notes, details, & specifications are provided by and are the sole responsibility of the electrical contractor. No electrical review has been performed and no certification of such is intended. - Structural design meets requirements of ASCE 318-14, ASCE 360-10, ASCE 15, & AWS-15, as applicable. - Steel components shall be coated, painted, or otherwise protected against corrosion per FBC Sec. 2203.2.2.2.2.2.2.2.6. - Aluminum components in contact with steel or embedded in concrete shall be painted or protected as prescribed in ASCE 15-15.1(a), or plastic/epoxy spacers provided. - All exposed fasteners shall be SS, or have a protective coating for corrosion protection. - Steel welds: E70xx electrodes. - Aluminum welds: 4043 filler alloy. - Aluminum extrusions: 6063-T6 or stronger, UNO.

ASCE 7-10 WIND LOADS: V=170 mph Exposure 'C' Risk Category 2 Struct. ASD Load Coeff = 0.6 Sign Height = 30 ft max Kzt=1.0, Kd=0.85, G=0.85 Wall components & cladding: Zone 4: ± 40.8 psf Zone 5: ± 51.9 psf

1200 N Federal Hwy, #200
Boca Raton, FL 33432
1-888-371-3113

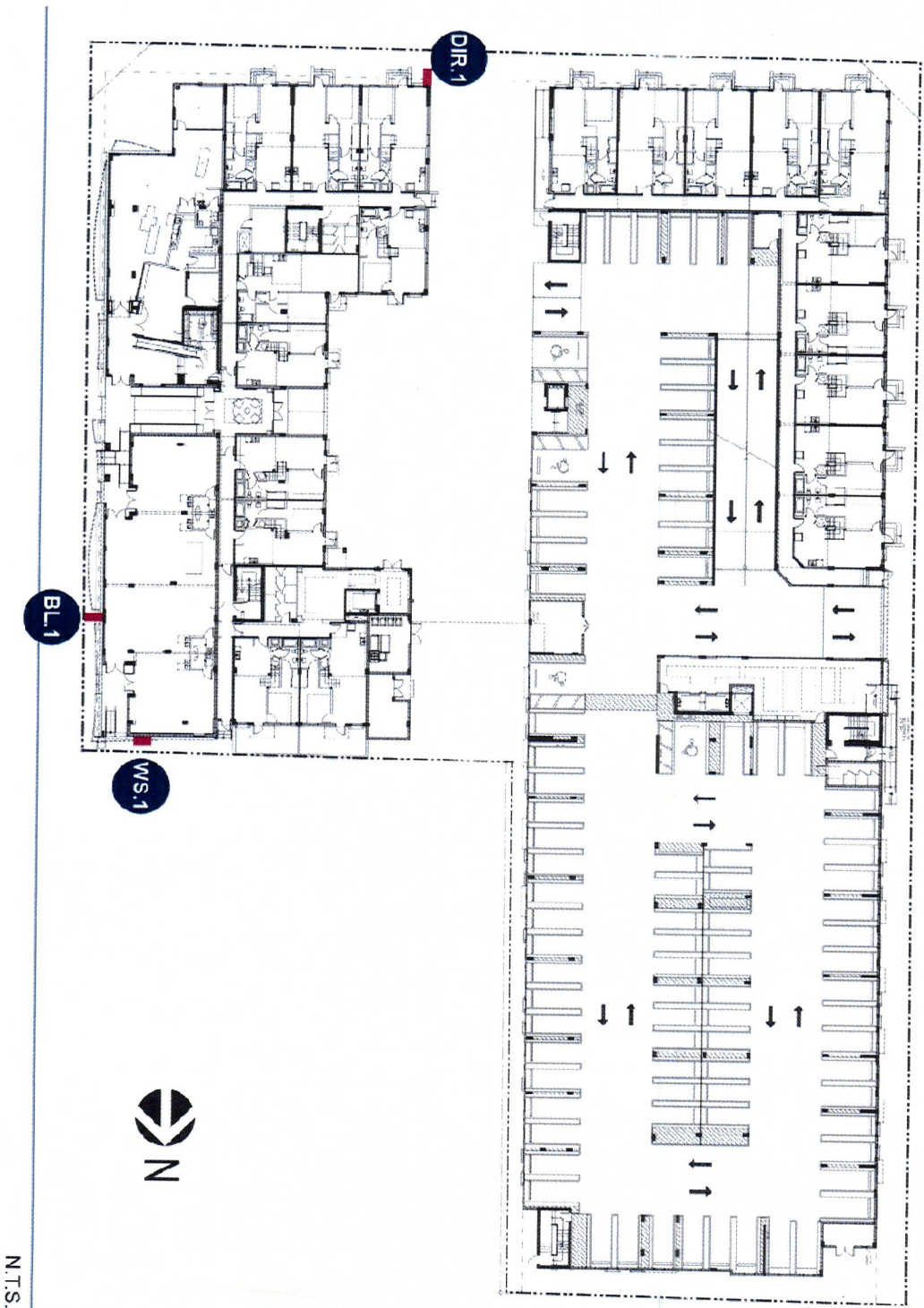
Christian Langley
Florida PE #67382
Cert of Auth #31124



FRANKIE BEANS SIGNS PROJECT



S I T E P L A N

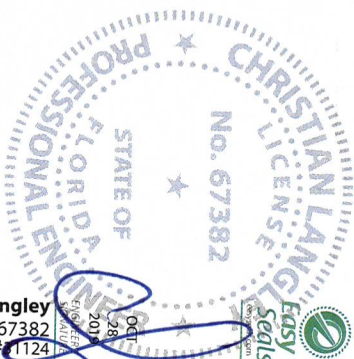


W O R K S C O P E

- BL-1 D/F INTERNALLY LIT BLADE MOUNTED SIGN (QTY 1)
- WS-1 S/F INTERNALLY LIT WALL SIGN (QTY 1)
- DIR-1 MODIFICATION TO D/F INTERNALLY LIT DIRECTIONAL SIGN (QTY 1)

C O D E A L L O W A N C E

CODE INFORMATION...



1200 N Federal Hwy, #200
Boca Raton, FL 33432
1-888-371-3113

Christian Langley
Florida PE #67382
Cert of Auth #1124

Wall components & cladding:
• Zone 4: ± 40.8 psf • Zone 5: ± 51.9 psf

• Sign Height = 30 ft max
• Kzt=1.0, Kd=0.85, G=0.85

• Risk Category 2 Struct.
• ASD Load Coeff = 0.6

ASCE 7-10 • V=170 mph
WIND LOADS: • Exposure 'C'

General Notes: -Design is in accordance with the requirements of the Fla. Bldg. Code 6th Ed (2017) for use within & outside the High Velocity Hurricane Zone (HVHZ). -This engineering certifies only the structural integrity of those systems, components, and/or other construction explicitly specified herein. -Electrical notes, details, & specifications are provided by and are the sole responsibility of the electrical contractor. No electrical review has been performed and no certification of such is intended. -Structural design meets requirements of ACI 318-14, AISI 360-10, ADM-1-15, & NDS-15, as applicable. -Steel components shall be coated, painted, or otherwise protected against corrosion per FBC Sec 2203.27222.6. -Alum. components in contact with steel or embedded in concrete shall be painted or protected as prescribed in ADM-1-15(1a), or plastic/ineptene spacers provided. -All exposed fasteners shall be S.S. or have a protective coating for corrosion protection. -All welding shall comply with AWS requirements. -Steel welds: F70w electrode. -Aluminum welds: 6063 alloy. -All dimensions shall be as shown on drawings.