



Development Services Department

BOARD ACTION REPORT – APPEALABLE ITEM

Project Name: Target

Project Location: 1200 W Linton Blvd

Request: Color Change

Board: Site Plan Review and Appearance Board

Meeting Date: December 11, 2019

Board Vote: Approved on a 6-0 vote

Board Action:

At its meeting of December 11, 2019, the Site Plan Review and Appearance Board (SPRAB) considered and approved action on the Color Change request for Target.

The Board voted to approve (6-0) the Color Change request associated with the facades of the building.

Project Description:

The subject property is located at 1200 W Linton Blvd. The subject site is zoned Planned Commercial (PC) with a Future Land Use designation of Planned Commercial (PC).

The request consists of changing the colors of the body of the building and main walls. The colors are to change from beige and green to, from lightest to darkest: “Classic Gray,” “Revere Pewter,” “Bright Silver,” “River Reflections,” and “Eagle Rock,” all of which are on the grayscale.

Board Comments:

The Board comments were supportive.

Public Comments:

No members of the public spoke for or against the project.

Associated Actions:

No associated actions.

Next Action:

The SPRAB action is final unless appealed by the City Commission.



SITE PLAN REVIEW AND APPEARANCE BOARD STAFF REPORT

DEVELOPMENT SERVICES DEPARTMENT

100 NW 1ST AVENUE, DELRAY BEACH, FLORIDA 33444

PLANNING & ZONING DIVISION: (561) 243-7040 • BUILDING DIVISION: (561) 243-7200

SITE PLAN REVIEW AND APPEARANCE BOARD

Meeting: December 11, 2019

File No.: 2020-044-COL-SPR

Application Type: Color Change

General Data

Agent: Kimley-Horn & Associates

Project Name: Target

Location: 1200 W Linton Blvd

PCN: 12-43-46-29-33-005-0000

FLUM: General Commercial (GC)

Zoning: Planned Commercial (PC)

Adjacent Zoning:

- North: AC (Automotive Commercial)
- South: SAD (Special Activities District)
- Southeast: SAD
- East: PC
- West: PC



Existing Land Use: Commercial

Proposed Land Use: Commercial

Item before the Board:

The item before the board is a color change to the body of the buildings and main walls. The colors proposed are, from lightest to darkest: "Classic Gray," "Revere Pewter," "Bright Silver," "River Reflections," and "Eagle Rock," all of which are on the grayscale.

Project Planner:

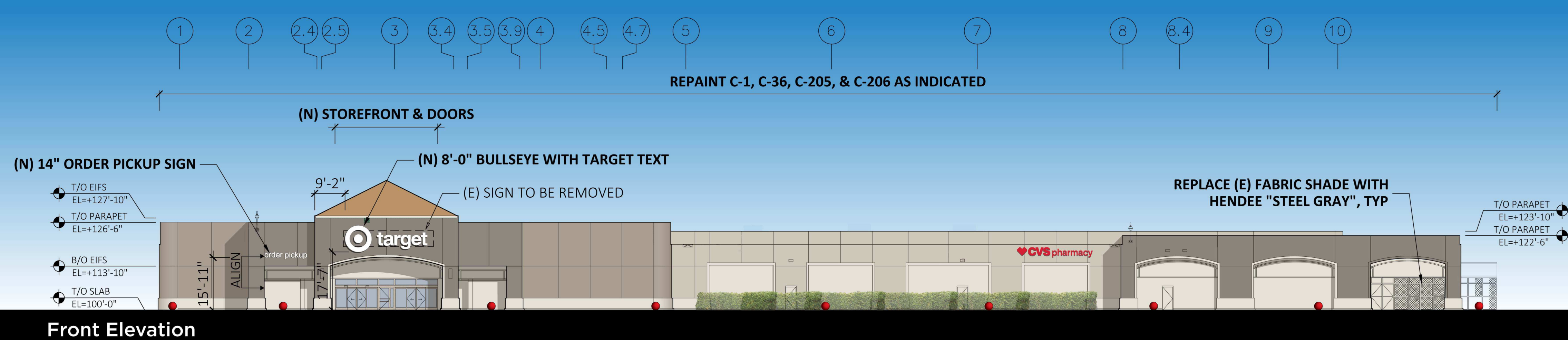
Anne Clerisse Gaisha Volcy, Planner in Training;
volcya@mydelraybeach.com

Review Dates:


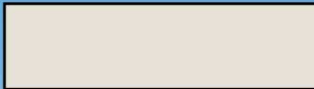

SPRAB: December 11, 2019

Attachments:

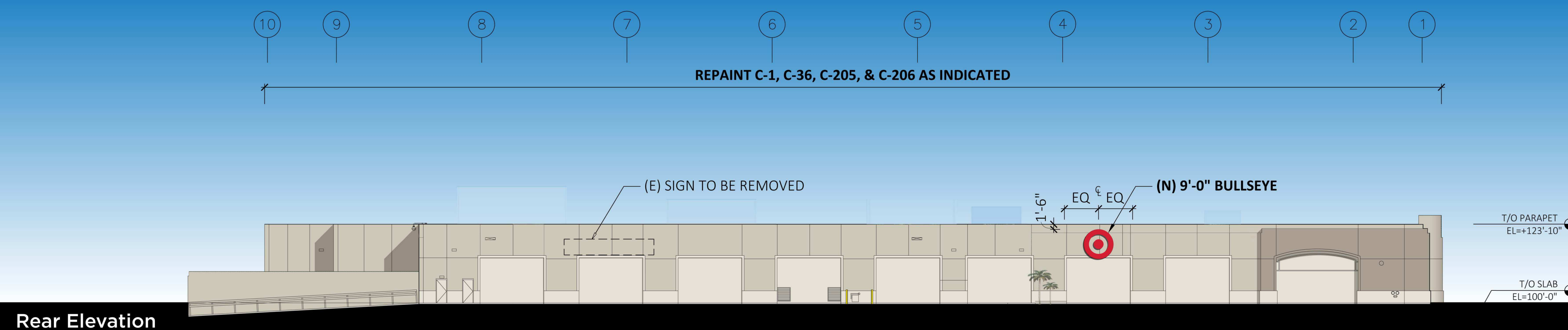
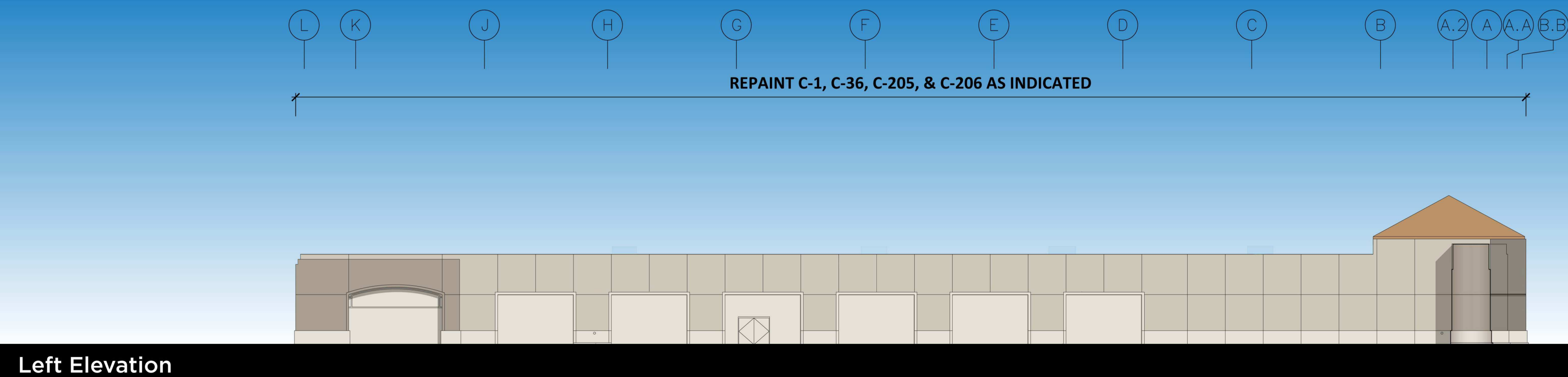
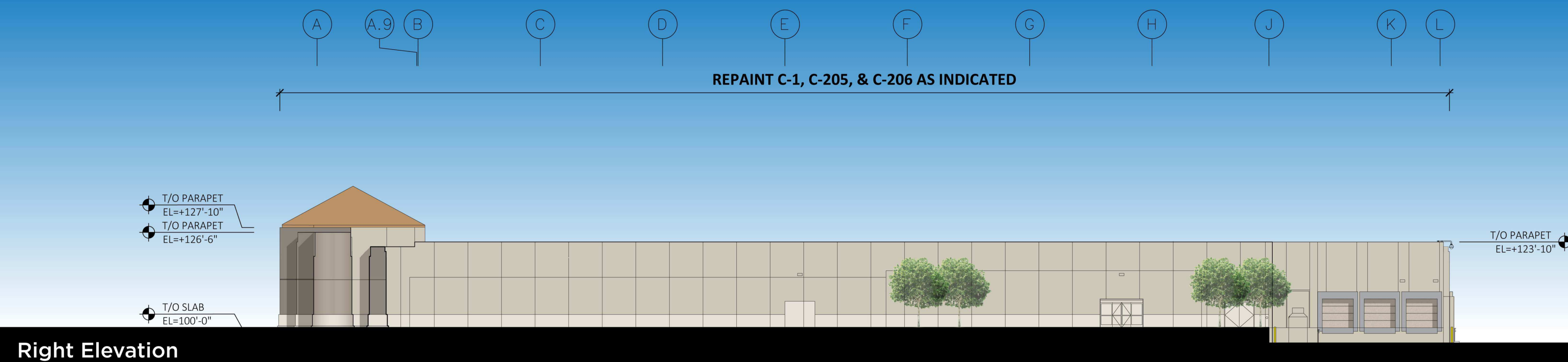
1. Elevations

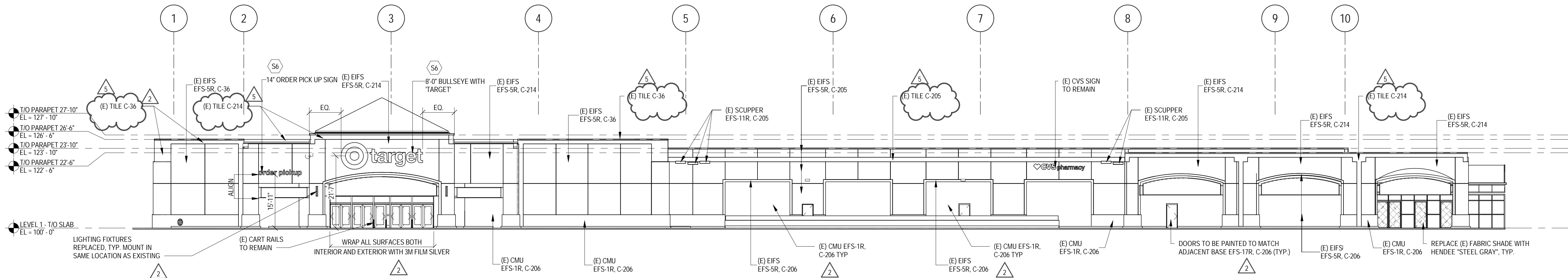


EXTERIOR MATERIAL FINISH KEY:

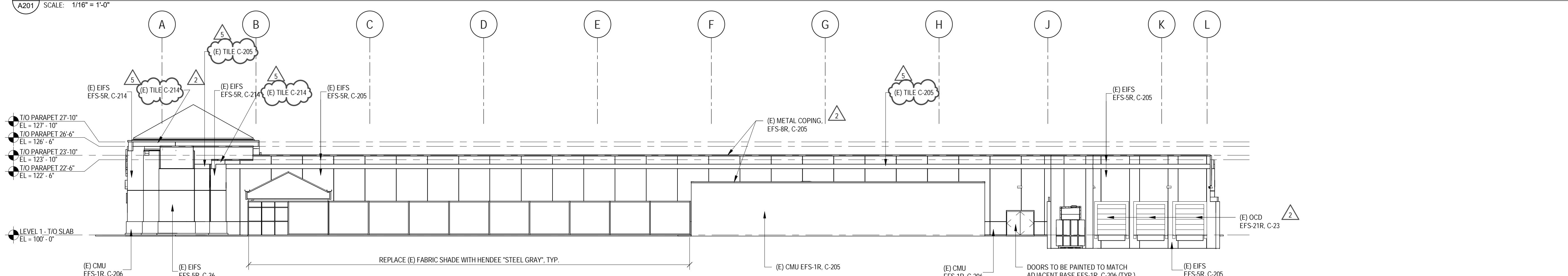
	C-1 RED
	C-206 BM 1548 CLASSIC GRAY
	C-205 BM HC-172 REVERE PEWTER
	C-36 BM 1552 RIVER REFLECTIONS
	C-214 BM 1469 EAGLE ROCK
	C-23 BRIGHT SILVER

- NOTES:**
1. ALL BENCHES TO BE REPLACED
 2. ENTRY SCNCES TO BE REMOVED AND REPLACED
 3. SIGN LOCATIONS ARE APPROXIMATE, SEE SIGN PACKAGE FOR EXACT LOCATIONS.

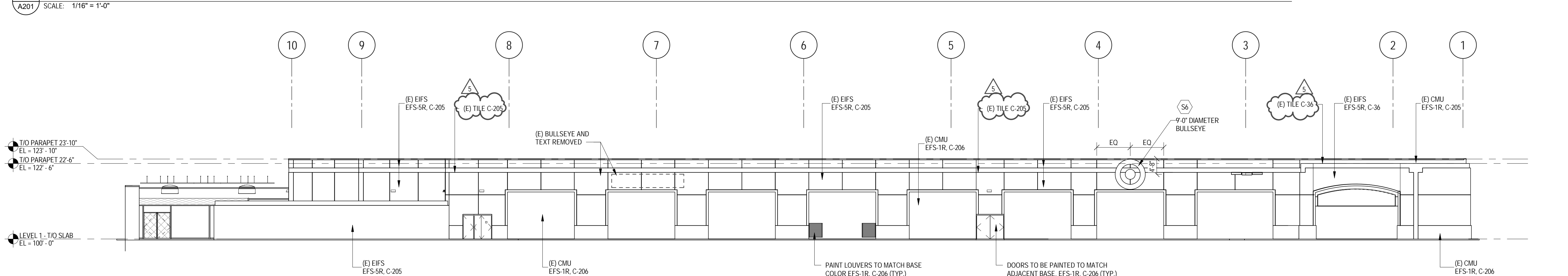




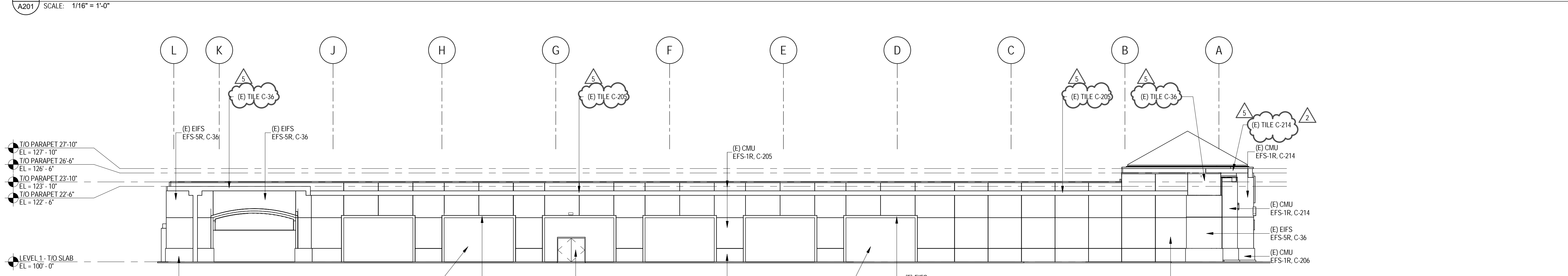
1 FRONT EXTERIOR ELEVATION



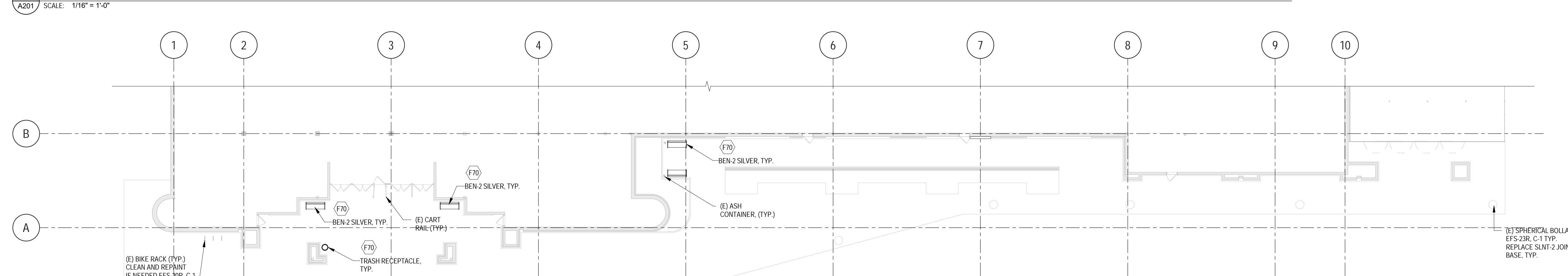
2 RIGHT EXTERIOR ELEVATION



3 REAR EXTERIOR ELEVATION



4 LEFT EXTERIOR ELEVATION



5 SIDEWALK PLAN

SIDEWALK PLAN NOTES

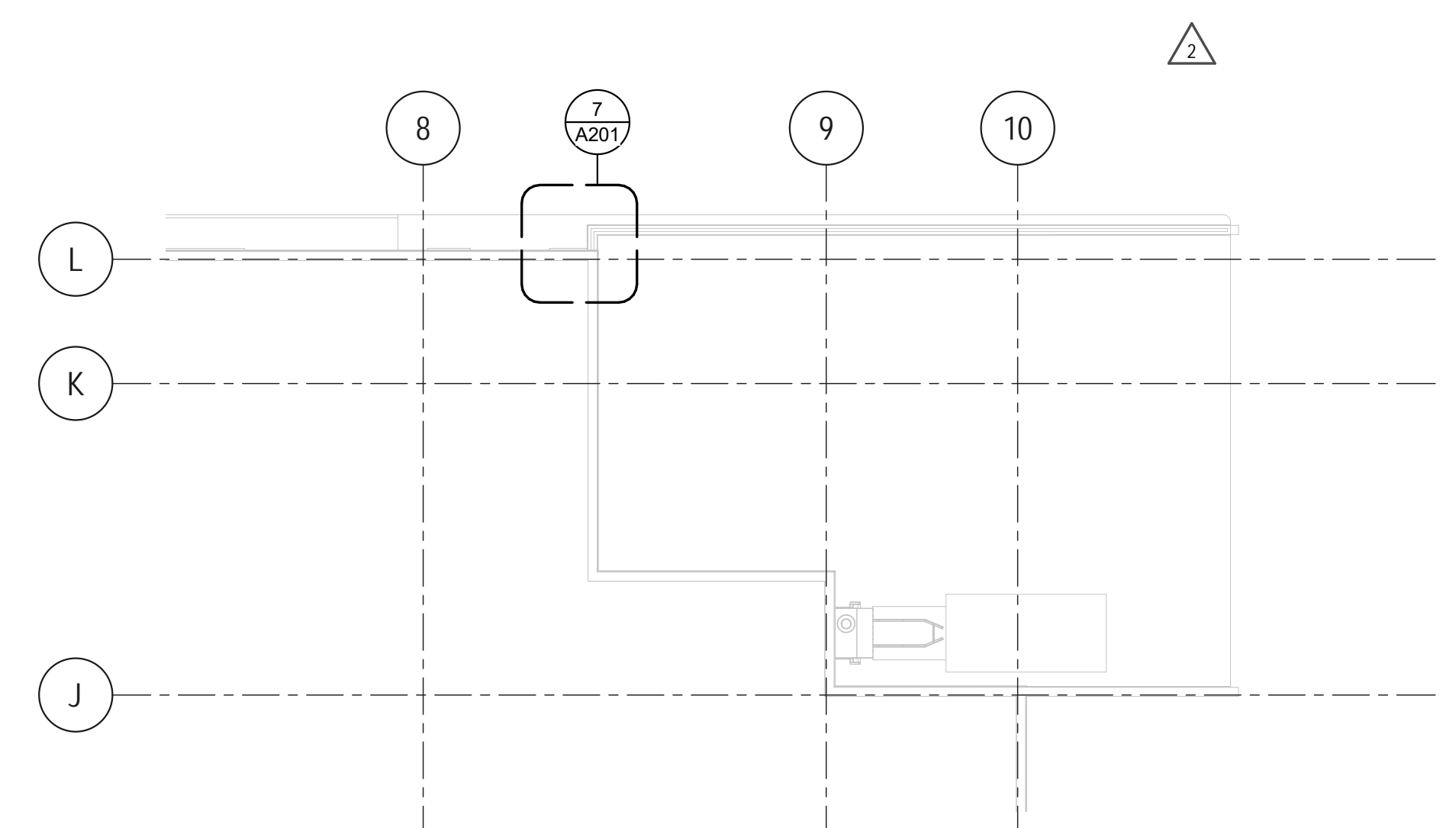
- REPLACE ALL EXISTING SITE FURNISHINGS IN FAIR TO GOOD CONDITION WITH NEW, INCLUDING BUT NOT LIMITED TO BENCHES, WASTE RECEPTACLES AND ASH SHUFFLER.
- REPAINT SPHERICAL BOLLARDS EFS-2SR, C-1. REPLACE SLINT-2 AT BASE.
- REPLACE PLASTIC SLEEVES ON SECURITY BOLLARDS.
- PAINT ALL RUSTED OR PEELING METAL ON EXTERIOR PERIMETER TO MATCH COLOR PALETTE, INCLUDING BUT NOT LIMITED TO STAIR GUARDRAILS, DOORS, FRAMES, TRIM, BOLLARDS, GARDEN CENTER FENCING, BINE ROCKS, ETC.
- TRIM ALL TREE BRANCHES THAT ARE IN CLOSE PROXIMITY TO AND OBSTRUCTING VISIBILITY OF EXISTING SITE OR BUILDING SIGNAGE.
- REPLACE PLANTER FILL WITH MATCHING MATERIAL AT ALL FRONT SIDEWALK AND FRONT ROW PARKING ISLAND AREAS.
- PAINT CROSSWALK STRIPES TO MATCH EXISTING IN LOCATION AND SIZE.
- POWER WASH FRONT WALK OUTSIDE OF EACH ENTRANCE ZONE.

EXTERIOR WALL FINISH COLOR KEY & LEGEND

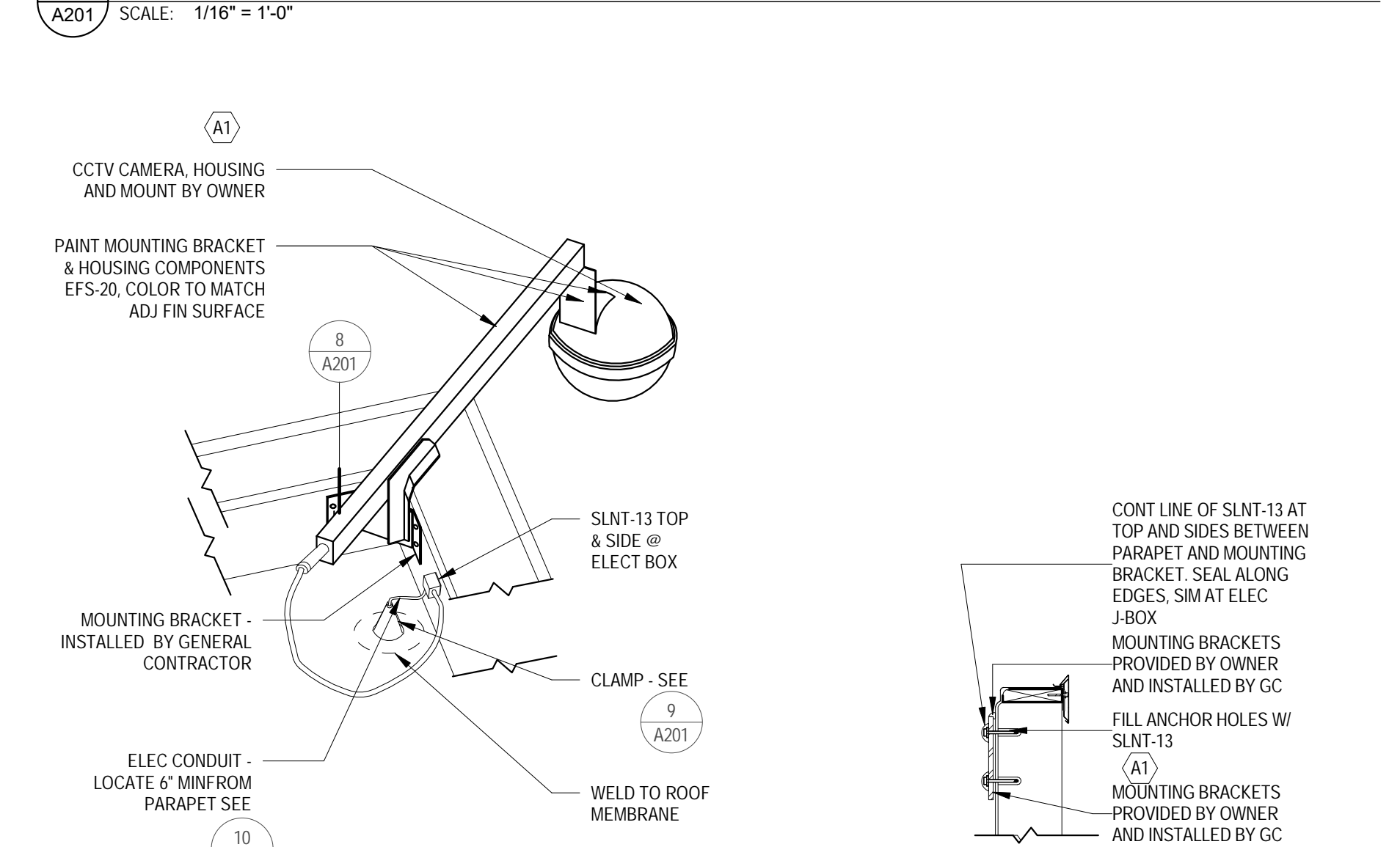
C-1	RED
C-36	RIVER REFLECTIONS
C-205	REVERE PEWTER BM HC-172
C-206	CLASSIC GRAY BM 1548
C-214	EAGLE ROCK BM 1469

EXTERIOR ELEVATION NOTES

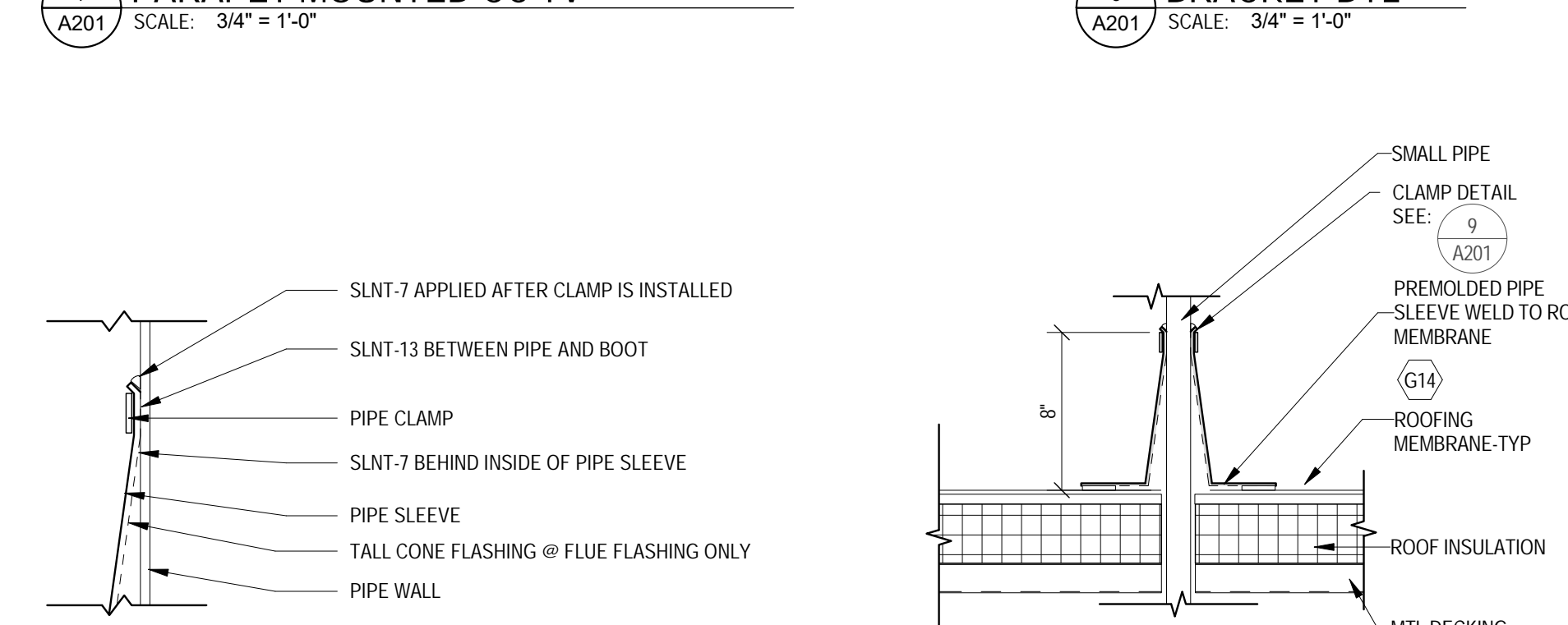
- AREA TO BE PAINTED STARTS AT TOP OF CURB OR REVEAL AND CONTINUES TO TOP OF PARAPET FLASHING OR REVEAL. PAINT COLOR AND FINISH TRANSITIONS OCCUR AT EXISTING VERTICAL CONTROL JOINTS OR AT INSIDE BUILDING CORNERS, UNO.
- ALL EXISTING WALL-MOUNTED ITEMS TO BE PAINTED TO MATCH ADJACENT WALL SURFACE, UNO.
- PAINT EXISTING EXTERIOR BOLLARDS, EFS-2SR, C-8, UNO.
- PAINT COLOR AND FINISH TRANSITIONS OCCUR AT EXISTING VERTICAL CONTROL JOINTS OR AT INSIDE BUILDING CORNERS, UNO.
- HORIZONTAL STRIPES AND COLOR TRANSITIONS OCCUR AT THE LOCATION OF EXISTING COLORED STRIPS, UNO.
- GC AND CSR TO COORDINATE EXTERIOR FINISH SYSTEM INSTALLATION OVER EXISTING ARCHITECTURAL WALL PANELS (AWP). PREP WALL AS REQUIRED TO RECEIVE NEW PAINT.
- PATCH ALL VISIBLE HOLES FROM MOUNTING OF REMOVED SIGNS WITH LIKE MATERIAL. RESTORE WALL SURFACE TO LIKE NEW APPEARANCE.
- REPLACE ALL CONTROL JOINTS WITH BACKER ROD AND SLINT-1.
- PROPOSED SIGNAGE AS SHOWN IS ILLUSTRATIVE AND IS NOT REVIEWED IN THE MINOR AMENDMENT REVIEW. A SEPARATE SIGN PERMIT IS REQUIRED FOR ALL SIGNAGE SHOWN.
- DO NOT PAINT INTEGRAL COLORED CMU, FACE BRICK OR PRE-CAST ELEMENTS, UNO.
- INTEGRAL COLOR CMU AND PRE-CAST ELEMENTS TO BE CLEANED AND SEALED.



6 PARTIAL ROOF PLAN



7 PARAPET MOUNTED CC TV

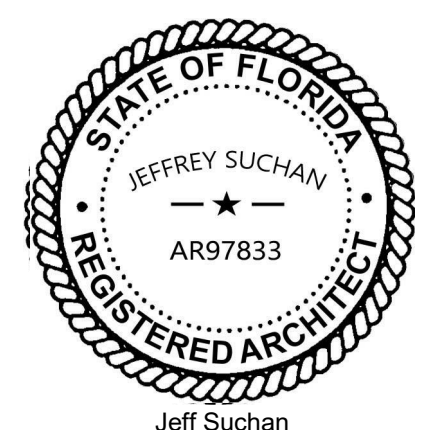


9 CLAMP DETAIL

10 SMALL PIPE SLEEVE



Date	No.	Description
1/15/2019		PERMIT ISSUE
03/01/19	2	DCN 1028425-0
04/05/2019		BID SET
10/24/19	5	DCN 1032722-0



TARGET

DELRAY BEACH
1200 LINTON BLVD
DELRAY BEACH, FLORIDA 33444

Project Number **T-0642**

Config: LL

Drawn By JS

Checked By RZS

EXTERIOR
ELEVATIONS,
SIDEWALK PLAN,
PARTIAL ROOF PLAN
& DETAILS

A201



BERTAN'S

NO
PARKING
FIRE
LANE

target

order pickup

Now
Remodeled

STOP