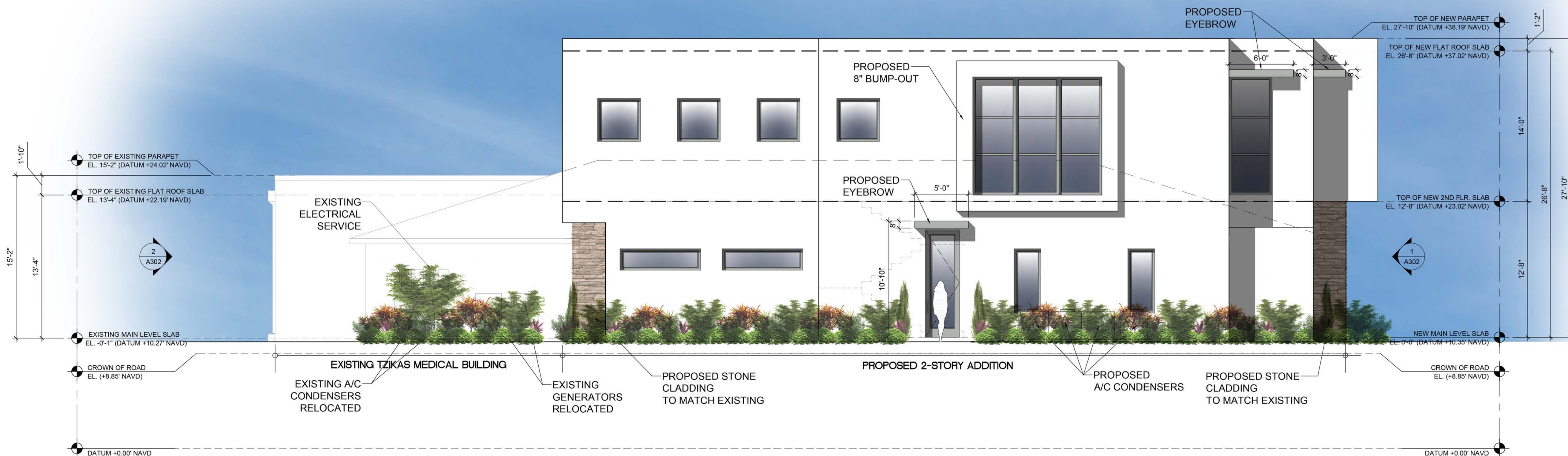


1 PROPOSED NORTH ELEVATION
3/16"=1'-0"



2 PROPOSED SOUTH ELEVATION
3/16"=1'-0"

SPRAB SUBMITTAL 12-16-19

REVISIONS	BY	DATE
△ SPRAB SP 1 SUBMITTAL	DWO	12.16.19

BUILDING ADDITION
THOMAS L. TZIKAS
526 S.E. 5th AVENUE
DELRAY BEACH, FL

RANDALL STOFFT
ARCHITECTS
distinctive. inspirational. architecture.

Job No. 1909047

FL-0011005 FIRM-AA003379

ALL IDEAS, DESIGNS, ARRANGEMENTS, & PLANS INDICATED OR REPRESENTED BY THIS DRAWING ARE OWNED BY A. RANDALL STOFFT ARCHITECTS, P.A. AND ARE NOT TO BE REPRODUCED, COPIED, OR USED IN ANY MANNER WITHOUT THE WRITTEN PERMISSION OF RANDALL STOFFT ARCHITECTS, P.A. THE CONTRACTOR SHALL VERIFY & BE RESPONSIBLE FOR ALL DIMENSIONS & CONDITIONS ON THE JOB. IF THE CONTRACTOR HAS ANY QUESTIONS OR CONCERNS, THEY MUST BE NOTIFIED TO THE ARCHITECT'S OFFICE IN WRITING BEFORE PROCEEDING WITH FABRICATION. ON ITEMS SO NOTED, © 2019. ALL RIGHTS RESERVED. RANDALL STOFFT ARCHITECTS, P.A.

A301