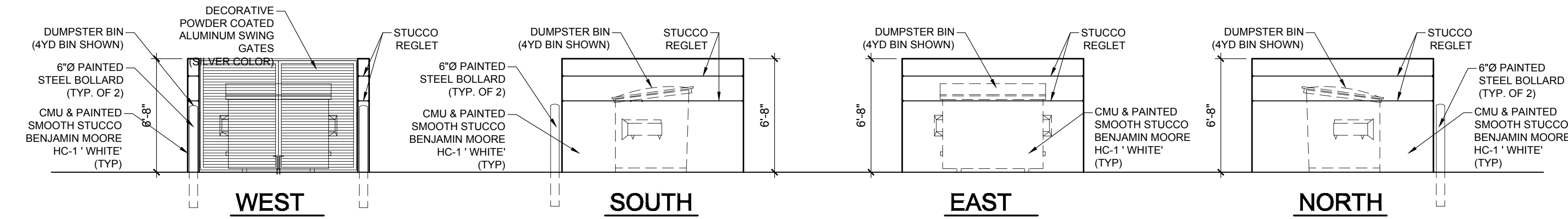
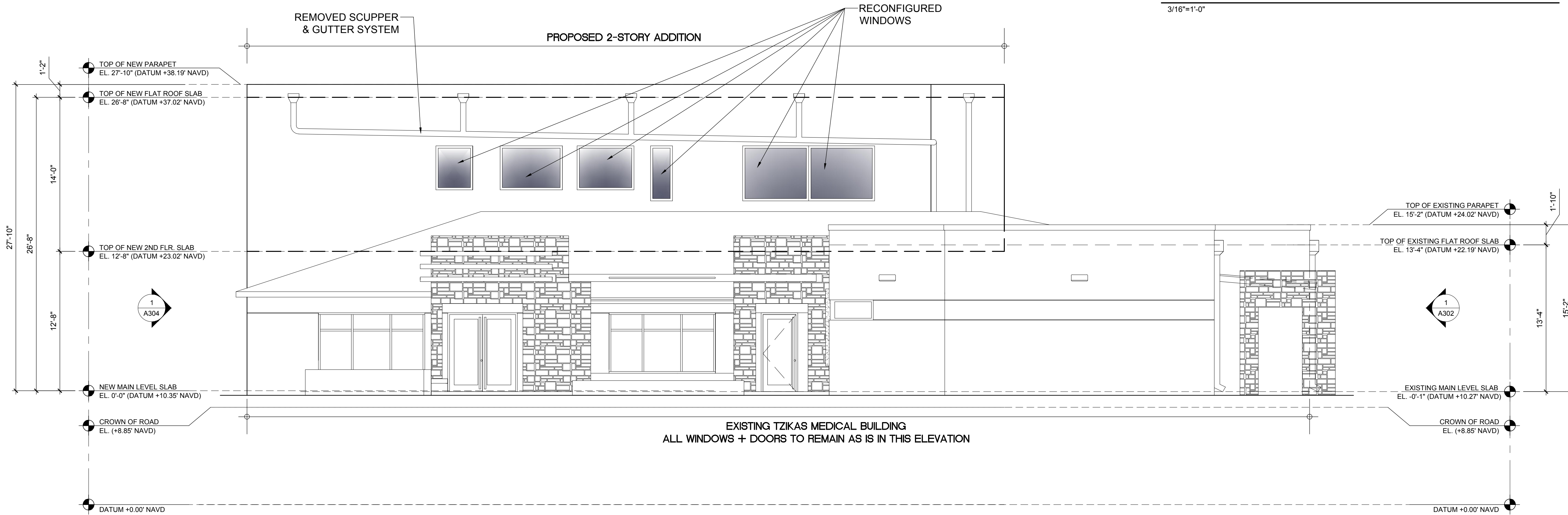


1 PROPOSED NORTH ELEVATION  
3/16"=1'-0"



DUMPSTER ENCLOSURE ELEVATIONS  
3/16"=1'-0"



1 APPROVED NORTH ELEVATION  
3/16"=1'-0"

SPRAB SUBMITTAL 12-16-19

REVISIONS	BY	DATE
△ SPRAB SP 1 SUBMITTAL	DND	12.16.19

BUILDING ADDITION  
THOMAS L. TZIKAS  
526 S.E. 5th AVENUE  
DELRAY BEACH, FL

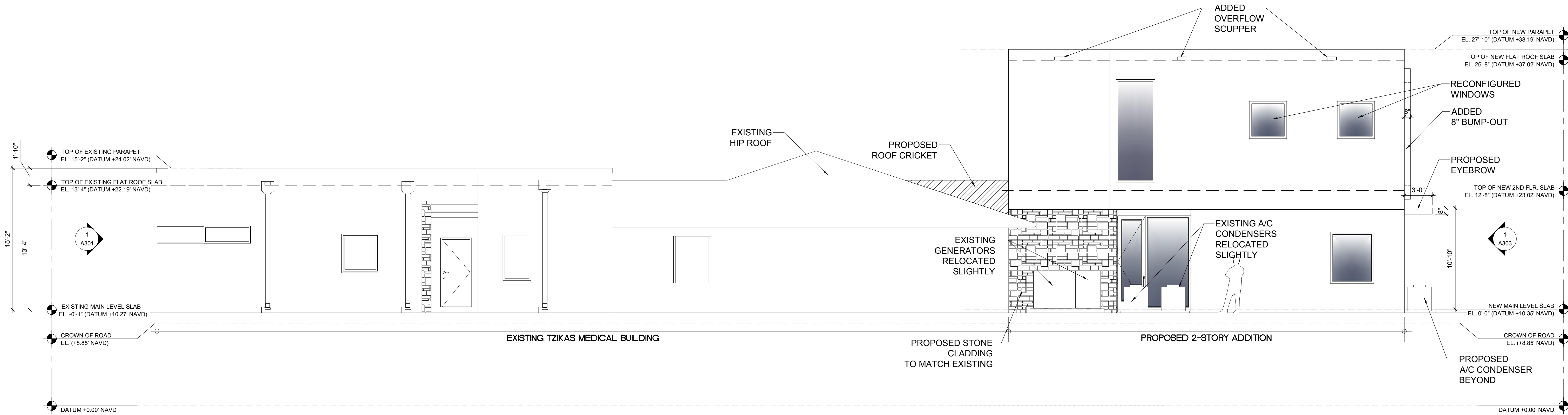
**RANDALL STOFFT**  
ARCHITECTS  
distinctive. inspirational. architecture.

Job No. 1909047

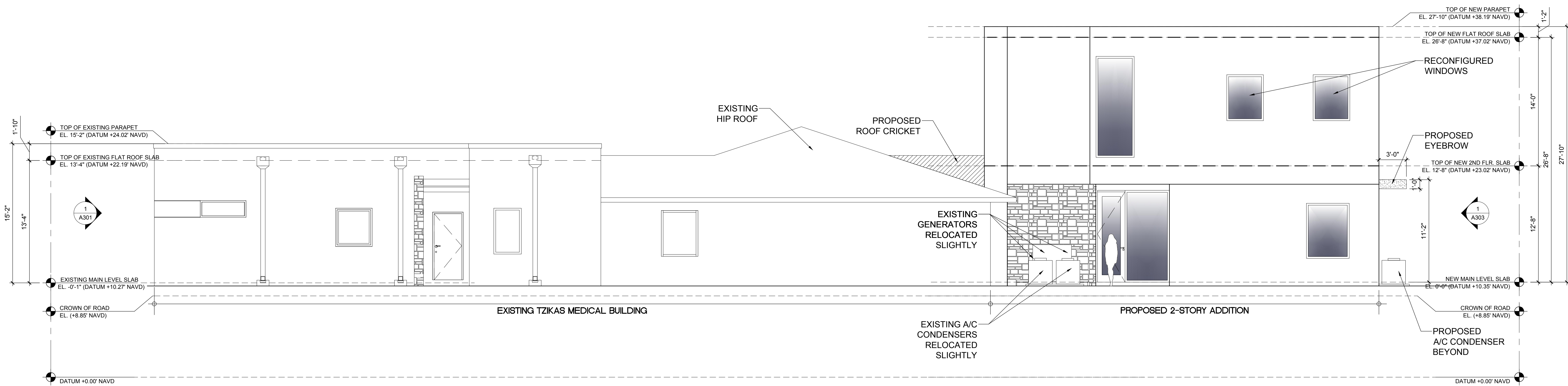
FL-0011005 FIRM-AA003379

ALL IDEAS, DESIGNS, ARRANGEMENTS, & PLANS INDICATED OR REPRESENTED BY THIS DRAWING ARE OWNED BY A MEMBER OF THE FIRM OF RANDALL STOFFT ARCHITECTS, P.A. THE PROPERTY OF THE FIRM OF RANDALL STOFFT ARCHITECTS, P.A. IS NOT TO BE REPRODUCED, COPIED, OR IN ANY MANNER USED FOR ANY PURPOSE WHATSOEVER WITHOUT THE WRITTEN PERMISSION OF RANDALL STOFFT ARCHITECTS, P.A. WRITTEN DIMENSIONS ON THESE DRAWINGS SHALL HAVE PRECEDENCE OVER SCALE DIMENSIONS. CONTRACTORS SHALL VERIFY & BE RESPONSIBLE FOR ALL DIMENSIONS & CONDITIONS ON THE JOB. IF THIS OFFICE MUST BE NOTIFIED OF ANY DISCREPANCY, IT MUST BE NOTIFIED TO THE OFFICE OF RANDALL STOFFT ARCHITECTS, P.A. FOR APPROVAL, BEFORE PROCEEDING WITH FABRICATION. ON ITEMS SO NOTED, © 2019, ALL RIGHTS RESERVED. RANDALL STOFFT ARCHITECTS P.A.

A301



1 PROPOSED WEST ELEVATION  
3/16"=1'-0"



1 APPROVED WEST ELEVATION  
3/16"=1'-0"

REVISIONS	BY	DATE
1	SPRAB SP 1 SUBMITTAL	DWD 12.16.19

BUILDING ADDITION  
THOMAS L. TZIKAS  
526 S.E. 5th AVENUE  
DELRAY BEACH, FL

**RANDALL STOFFT**  
ARCHITECTS  
distinctive. inspirational. architecture.

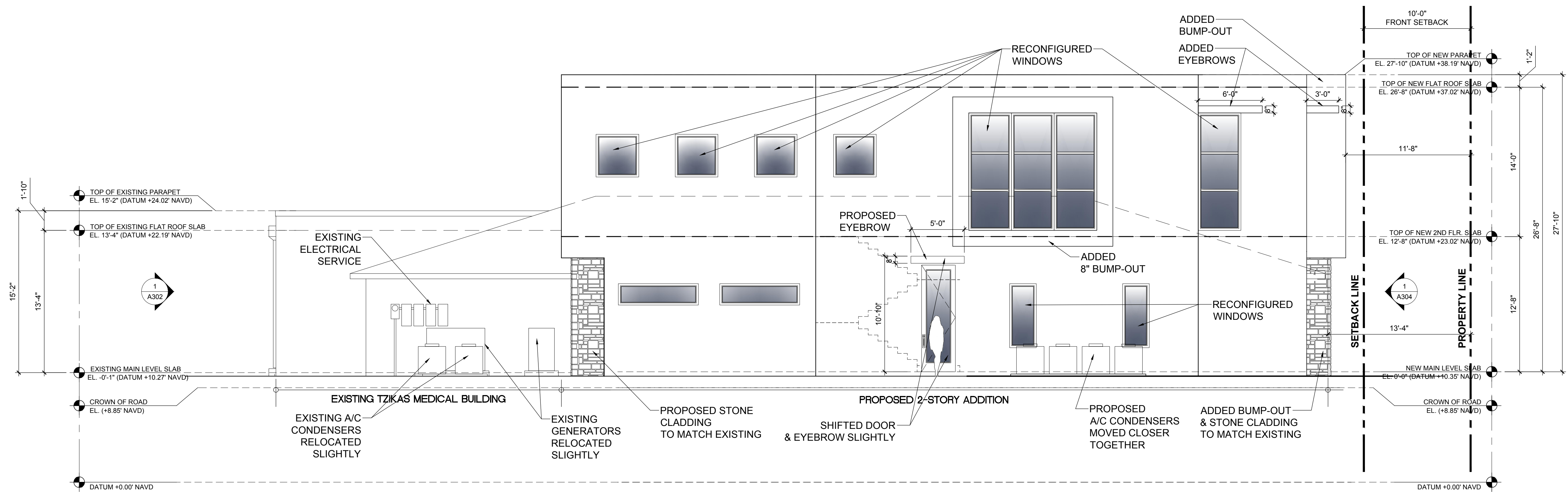
Job No. 1909047

FL-001105 FIRM-AA003379

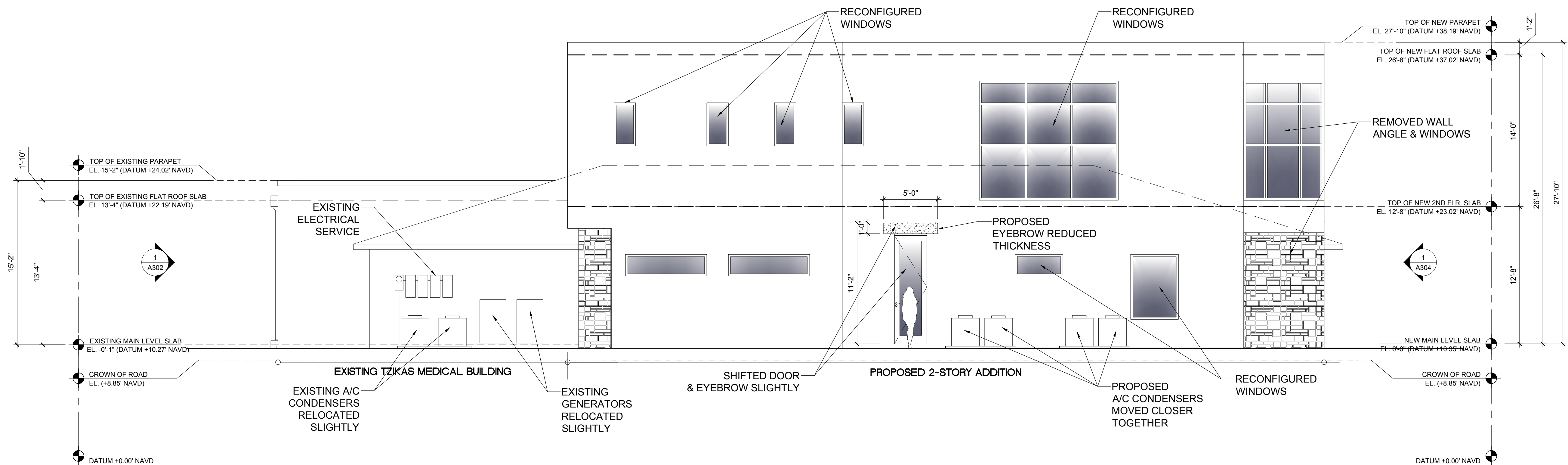
ALL IDEAS, DESIGNS, ARRANGEMENTS, & PLANS INDICATED OR REPRESENTED BY THIS DRAWING ARE OWNED BY, & DEVELOPED FOR USE ON, & IN CONNECTION WITH THE SPECIFIC PROJECT, NONE OF WHICH ARE TO BE REPRODUCED, COPIED, OR USED IN ANY MANNER WITHOUT THE WRITTEN PERMISSION OF RANDALL L. STOFFT ARCHITECTS, P.A. WRITTEN DIMENSIONS ON THESE DRAWINGS SHALL HAVE PRECEDENCE OVER SCALE DIMENSIONS. CONTRACTORS SHALL VERIFY & BE RESPONSIBLE FOR ALL DIMENSIONS & CONDITIONS ON THE JOB. & THIS OFFICE MUST BE NOTIFIED OF ANY DISCREPANCIES OR OMISSIONS IN THE DRAWINGS OR CONDITIONS SHOWN BY THESE DRAWINGS. SHOP DETAILS OF ALL MATERIALS & EQUIPMENT MUST BE SUBMITTED TO THIS OFFICE FOR APPROVAL, BEFORE PROCEEDING WITH FABRICATION. ON-TIME SO NOTED. © 2019. ALL RIGHTS RESERVED. RANDALL STOFFT ARCHITECTS P.A.

A302





1 PROPOSED SOUTH ELEVATION  
3/16"=1'-0"



1 APPROVED SOUTH ELEVATION  
3/16"=1'-0"

SPRAB SUBMITTAL 12-16-19

REVISIONS	BY	DATE
1	SPRAB SP 1 SUBMITTAL	DND 12.16.19

BUILDING ADDITION  
THOMAS L. TZIKAS  
526 S.E. 5th AVENUE  
DELRAY BEACH, FL

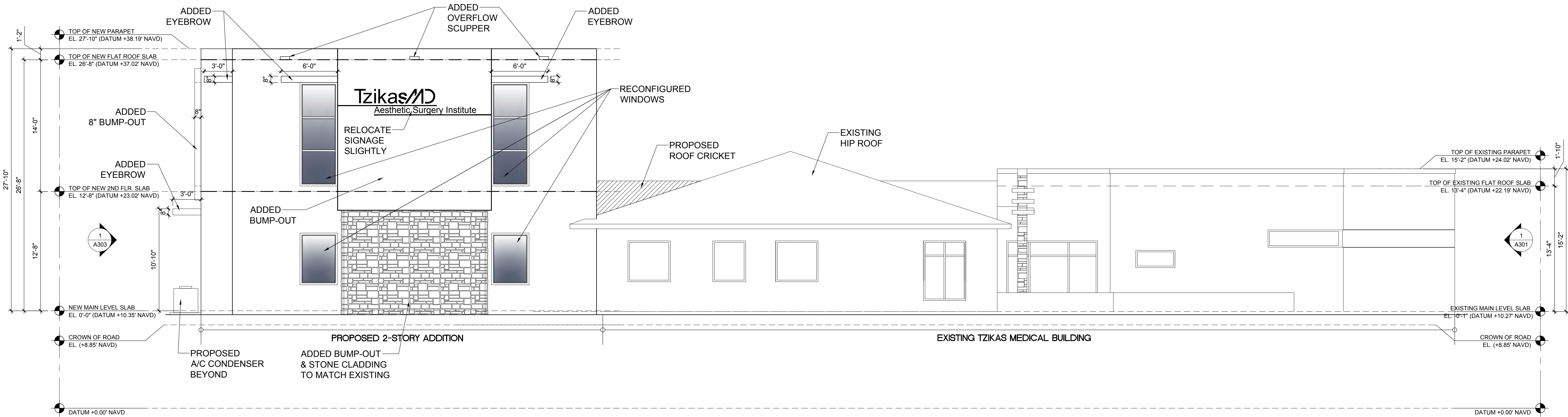
RANDALL STOFFT  
ARCHITECTS  
distinctive. inspirational. architecture.

Job No. 1909047

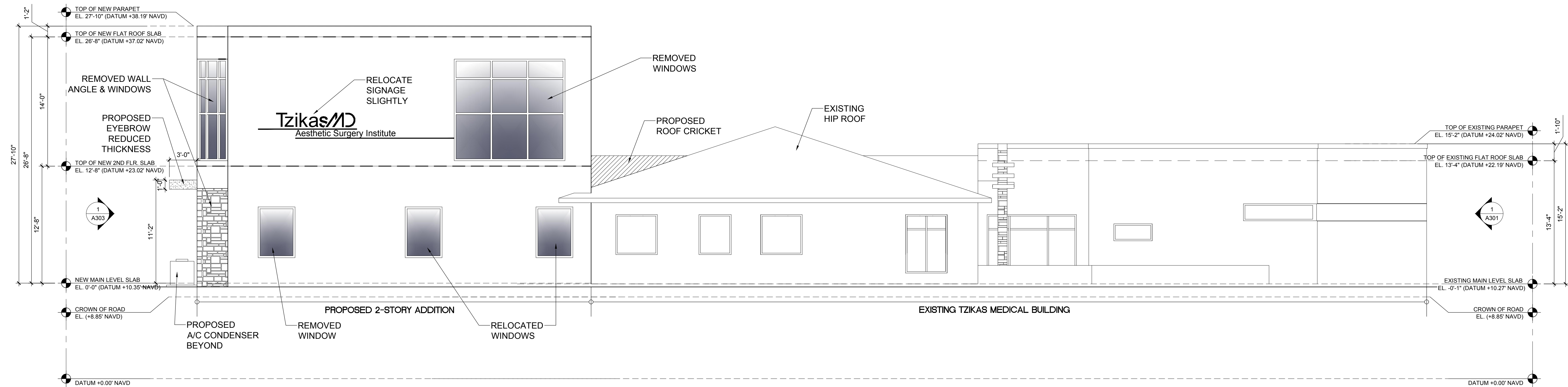
FL-0011005 FIRM-AA003379

ALL IDEAS, DESIGNS, ARRANGEMENTS, & PLANS INDICATED OR REPRESENTED BY THIS DRAWING ARE OWNED BY A. RANDALL STOFFT ARCHITECTS, P.A. AND ARE THE PROPERTY OF THE FIRM. NO PART OF THIS DRAWING, IN WHOLE OR IN PART, SHALL BE REPRODUCED OR TRANSMITTED IN ANY FORM OR BY ANY MEANS, ELECTRONIC OR MECHANICAL, INCLUDING PHOTOCOPYING, RECORDING, OR BY ANY INFORMATION STORAGE AND RETRIEVAL SYSTEM, WITHOUT THE WRITTEN PERMISSION OF RANDALL STOFFT ARCHITECTS, P.A. CONTRACTORS SHALL VERIFY & BE RESPONSIBLE FOR ALL DIMENSIONS & CONDITIONS ON THE JOB. IF THIS OFFICE MUST BE NOTIFIED OF ANY VARIATIONS FROM THE CONDITIONS SHOWN BY THESE DRAWINGS, SUCH DETAILS OF ANY VARIATIONS MUST BE SUBMITTED TO THIS OFFICE FOR APPROVAL BEFORE PROCEEDING WITH FABRICATION. OTHERWISE, THE CONTRACTOR SHALL BE RESPONSIBLE FOR THE CONSTRUCTION OF THE WORK. © 2019 ALL RIGHTS RESERVED. RANDALL STOFFT ARCHITECTS, P.A.

A303



1 PROPOSED EAST ELEVATION  
3/16"=1'-0"



1 APPROVED EAST ELEVATION  
3/16"=1'-0"

SPRAB SUBMITTAL 12-16-19

REVISIONS	BY	DATE
△ SPRAB SP 1 SUBMITTAL	DND	12.16.19

BUILDING ADDITION  
THOMAS L. TZIKAS  
526 S.E. 5th AVENUE  
DELRAY BEACH, FL

**RANDALL STOFFT**  
ARCHITECTS  
distinctive. inspirational. architecture.

Job No. 1909047  
  
FL-001105 FIRM-AA003379  
ALL IDEAS, DESIGNS, ARRANGEMENTS, & PLANS INDICATED OR REPRESENTED BY THIS DRAWING ARE OWNED BY A. RANDALL STOFFT ARCHITECTS, P.A. AND ARE THE PROPERTY OF THE FIRM. NO PART OF THIS DRAWING, IN WHOLE OR IN PART, SHALL BE REPRODUCED OR TRANSMITTED IN ANY FORM OR BY ANY MEANS, ELECTRONIC OR MECHANICAL, INCLUDING PHOTOCOPYING, RECORDING, OR BY ANY INFORMATION STORAGE AND RETRIEVAL SYSTEM, WITHOUT THE WRITTEN PERMISSION OF RANDALL L. STOFFT ARCHITECTS, P.A. WRITTEN DIMENSIONS ON THESE DRAWINGS SHALL HAVE PRECEDENCE OVER SCALE DIMENSIONS. CONTRACTORS SHALL VERIFY & BE RESPONSIBLE FOR ALL DIMENSIONS & CONDITIONS ON THE JOB. IF THIS OFFICE MUST BE NOTIFIED OF ANY VARIATION FROM THE CONDITIONS SHOWN BY THESE DRAWINGS, SUCH DETAILS OF ADEQUATE SCALE MUST BE SUBMITTED TO THIS OFFICE FOR APPROVAL, BEFORE PROCEEDING WITH FABRICATION. ON ITEMS SO NOTED. © 2019. ALL RIGHTS RESERVED. RANDALL STOFFT ARCHITECTS P.A.

A304