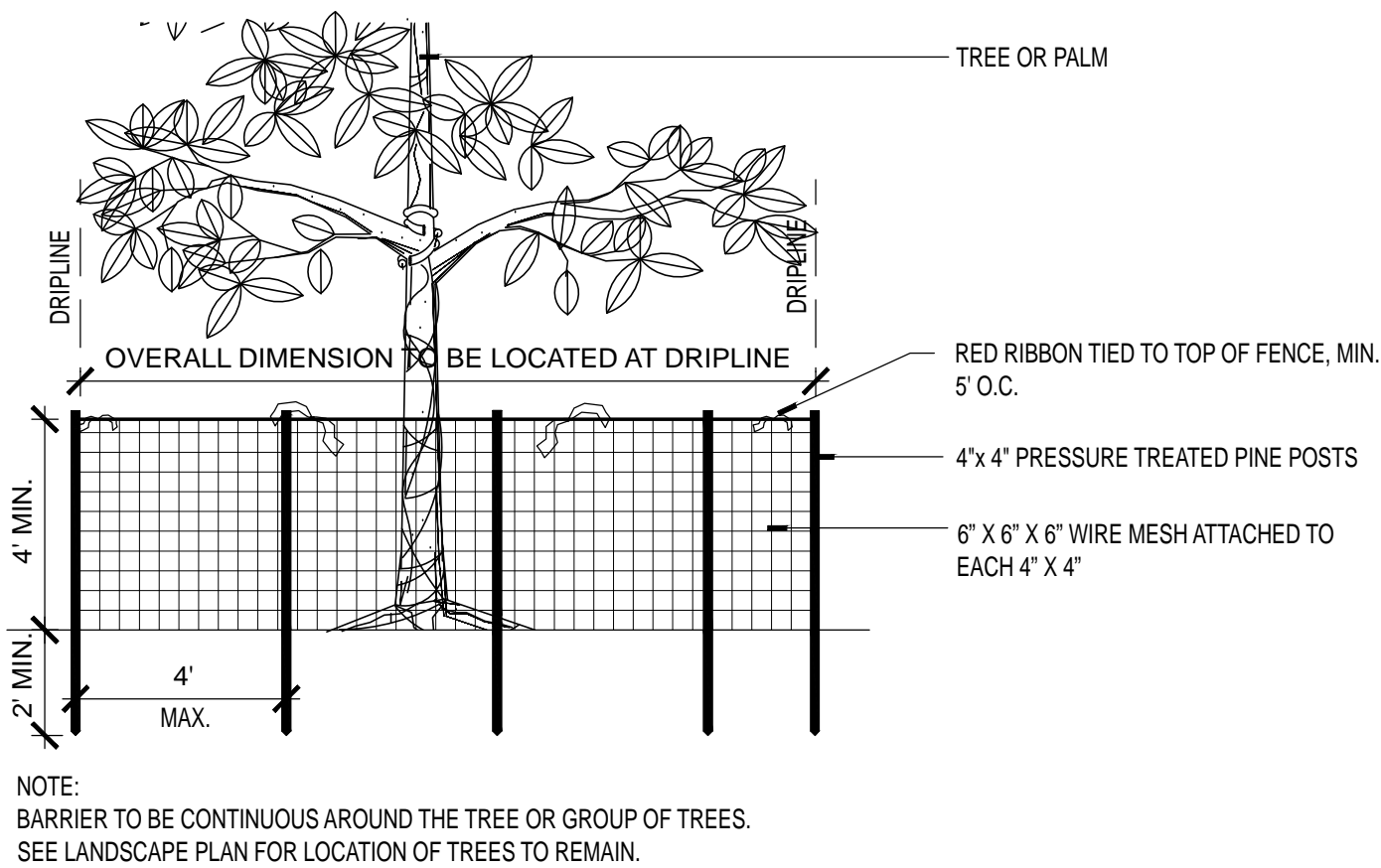


5. RELOCATION SPECIFICATIONS

- 5.1. GENERAL
- 5.1.1. VERIFY AND ENSURE ALL TREES/PALM IDENTIFIED ON THE CONSTRUCTION DRAWINGS AND THOSE TAGGED IN THE FIELD CORRESPOND AS TO NUMBER AND DESCRIPTION. ANY DISCREPANCIES SHALL BE BROUGHT TO THE ATTENTION OF THE LANDSCAPE ARCHITECT IMMEDIATELY, PRIOR TO PREPARATION.
- 5.1.2. LANDSCAPE CONTRACTOR SHALL BE RESPONSIBLE FOR TREE/PALM PROTECTION OF ALL VERIFIED MATERIAL. INSTALL BARRICADE OF GALVANIZED WELDED WIRE FABRIC OR PLASTIC MESH TO ENCOMPASS THE DRIP LINE OF THE TREE PALM. BARRICADE TO BE REMOVED WHEN DIRECTED BY LANDSCAPE ARCHITECT.
- 5.1.3. TREE ROOT BALL SHALL BE: ROOT PRUNED 50% (EQUALLY AROUND TREE) 60 DAYS PRIOR TO TRANSPLANT, THE REMAINING 50% TO BE PRUNED 30 DAYS PRIOR TO TRANSPLANTING.
- 5.1.4. PALMS TO BE RELOCATED MAY BE IMMEDIATELY RELOCATED AFTER DIGGING. GUMBO LIMBO (BURSERA SIMARUBA) TREES MAY ALSO BE RELOCATED IMMEDIATELY AFTER DIGGING.
- 5.1.5. ROOT TO BE PRUNED WITH CLEAN, SHARP TOOLS. ROOTS 1 INCH AND LARGER IN DIAMETER SHALL BE NEATLY AND CLEANLY CUT WITH A HANDSAW OR OTHER APPROVED CUTTING IMPLEMENT AS DIRECTED BY AN ISA OR ASCA CERTIFIED ARBORIST.
- 5.1.6. LANDSCAPE CONTRACTOR TO APPLY MYCORRHIZA APPLICATION TO ROOTS DURING ROUTE PRUNING AND DIGGING OPERATIONS. ALL PRUNING TO BE REVIEWED AND APPROVED BY LANDSCAPE ARCHITECT PRIOR TO PRUNING.
- 5.1.7. DEADWOOD, CROSSING BRANCHES, AND GENERAL CANOPY PRUNING SHALL BE PERFORMED OR DIRECTED BY AN ASA OR ASCA CERTIFIED ARBORIST IN ACCORDANCE WITH THE LATEST VERSION OF THE ANSI A-300 PRUNING STANDARDS AND GOOD HORTICULTURAL PRACTICES IMMEDIATELY AFTER COMPLETION OF ROOT PRUNING OF EACH SPECIMEN TO BE RELOCATED. ALL PRUNING TO BE REVIEWED AND APPROVED BY LANDSCAPE ARCHITECT PRIOR TO PRUNING.
- 5.1.8. ROOT BALL SIZE TABLE: (NOTE: ROOT BALL SIZES SHALL EXCEED MINIMUM STANDARDS SET FORTH IN GRADES AND STANDARDS FOR NURSERY PLANTS, PART TWO, PALMS AND TREES, FLORIDA DEPARTMENT OF AGRICULTURE).
- | TREE/PALM CALIPER | MINIMUM ROOTBALL DIAMETER |
|-------------------|---------------------------|
| 1" - 1 1/2"       | 16"                       |
| 1 1/2" - 1 3/4"   | 20"                       |
| 1 3/4" - 2"       | 24"                       |
| 2" - 2 1/2"       | 28"                       |
| 2 1/2" - 3 1/2"   | 32"                       |
| 3 1/2" - 4"       | 36"                       |
| 4" - 4 1/2"       | 40"                       |
| 4 1/2" - 5"       | 44"                       |
| 5" - 5 1/2"       | 48"                       |
- THE ROOT BALL OF LARGER CALIPER SIZES SHALL BE INCREASED PROPORTIONALLY AT 3 INCHES OF ROOTBALL DIAMETER FOR EVERY INCREASE OF 1 INCH IN CALIPER OR FRACTION THERE OF.
- 5.1.9. MAINTAIN COMPACT ROOT BALLS. ROOT BALL SHALL BE COMPLETELY ENCLOSED WITHIN A BURLAP COVERING OR STRETCH WRAP AS COMMONLY USED WITHIN THE HORTICULTURAL INDUSTRY, INTO COMPLETE LAYERS.
- 5.1.10. ALL TREES TO BE FLOODED FOR FIVE DAYS PRIOR TO TRANSPLANT.
- 5.1.11. ALL PITS TO BE FILLED THE SAME DAY AND WITH CLEAN FILL AND 18 INCH LIFT/LAYERS. EACH THEN COMPACTED BEFORE A SUBSEQUENT 18 INCH LIFT/LAYER IS PLACED. REPEAT UNTIL BACKFILL IS FLUSH WITH SURROUNDING GRADE.
- 5.1.12. CORRECT ALL PROBLEMS RELATED TO SETTLEMENT, EROSION, OR OTHER DISTRESS OF EXCAVATED/BACKFILLED PIT FROM WHICH TREE/PALM HAS BEEN REMOVED, INCLUDING THE COMPLETE AND THOROUGH REMOVAL OF ALL RESIDUAL ROOTS, STUMPS AND PORTIONS AND PARTS THERE OF.
- 5.1.13. RESTORE THE SURFACE WITH MATERIAL TO MATCH ADJACENT AREAS. MATERIAL TO BE APPROVED BY LANDSCAPE ARCHITECT. CONTRACTOR TO PROVIDE A MINIMUM ONE-YEAR WARRANTY ON SETTLING AND PLANT MATERIAL.
- 5.1.14. LANDSCAPE CONTRACTOR IS RESPONSIBLE FOR ALL MATERIAL INCLUDING BUT NOT LIMITED TO BACKFILL MATERIAL, PROTECTION FENCING, FLAGGING, ROOT BALL BURLAP OR SHRINK WRAP.
- 5.1.15. ALL RELOCATED TREES AND PALMS MUST BE WATERED TWICE DAILY FOR 2 WEEKS AND DAILY FOR AN ADDITIONAL 2 WEEKS, BEGINNING IMMEDIATELY AFTER TRANSPLANTING HAS OCCURRED..



1 TREE PROTECTION DETAIL

SCALE: N.T.S.

TREE PROTECTION NOTES

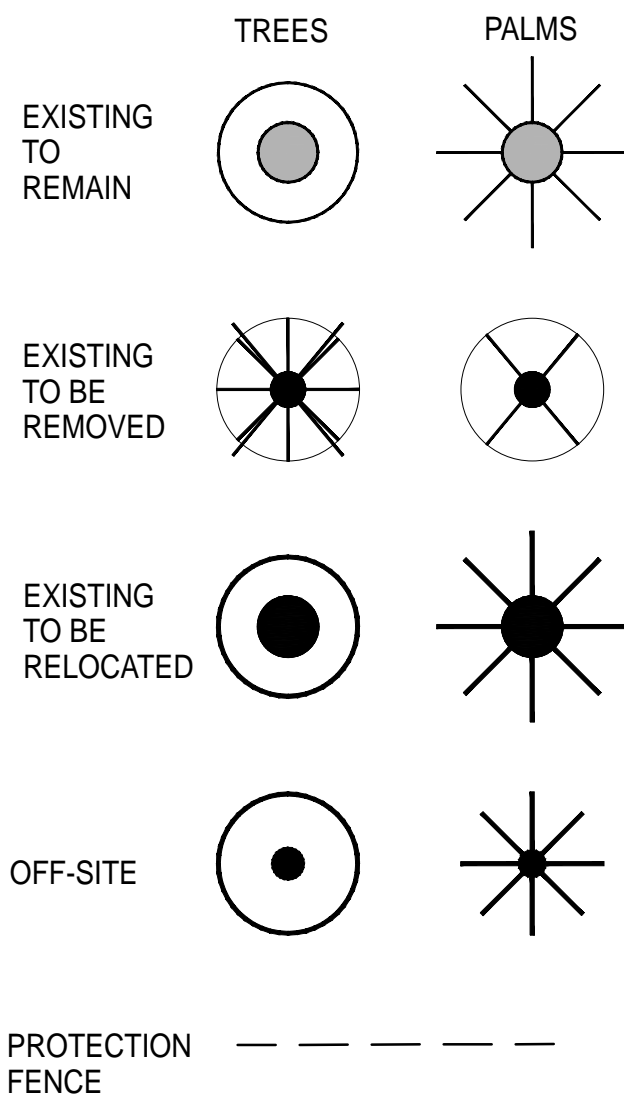
1. TREE SURVEY BASED ON ALL AVAILABLE INFORMATION. CONTRACTOR TO REPORT ALL DISCREPANCIES TO LANDSCAPE ARCHITECT FOR REVIEW PRIOR TO CONSTRUCTION.
2. TREES SHALL BE PROTECTED DURING CONSTRUCTION ACTIVITY THROUGH THE USE OF PROTECTIVE BARRIERS (SEE PROVIDED DETAIL). TREES THAT ARE TO REMAIN SHALL BE CLEARLY IDENTIFIED WITH TAGS. TREE PROTECTION BARRIERS SHALL BE MAINTAINED AROUND THE TREES IN ACCORDANCE WITH THE TREE PROTECTION PLAN APPROVED BY THE DEPARTMENT.
3. PRIOR TO AND DURING DEMOLITION, DEVELOPMENT, OR CONSTRUCTION, PROTECTIVE BARRIERS SHALL BE PLACED AROUND THE PERIMETER OF EACH TREE'S TPZ AND SHALL REMAIN IN PLACE IN ORDER TO PREVENT THE DESTRUCTION OR DAMAGING OF ROOTS, STEMS OR CROWNS OF SUCH TREES. THE BARRIERS SHALL REMAIN IN PLACE AND INTACT UNTIL APPROVED LANDSCAPE OPERATIONS BEGIN.
4. BARRIERS MAY BE REMOVED TEMPORARILY TO ACCOMMODATE CONSTRUCTION NEEDS, PROVIDED THAT THE MANNER AND PURPOSE FOR SUCH TEMPORARY REMOVAL WILL NOT HARM THE TREES.
5. THE TREES SHALL BE PROPERLY IRRIGATED THROUGHOUT THE BUILDING PROCESS.
6. NO PRUNING OF TREES SHALL BE PERFORMED EXCEPT BY APPROVED ARBORIST.
7. CONTRACTOR SHALL VERIFY ALL EXISTING ABOVE AND UNDERGROUND UTILITIES 48 HOURS PRIOR TO ANY ON-SITE EXCAVATION.
8. CONTRACTOR TO COORDINATE DEMOLITION PLAN WITH ARCHITECTS
9. ANY PLANT MATERIAL SCARRED OR DESTROYED THAT IS DESIGNATED TO REMAIN MUST BE REPLACED AT THE CONTRACTOR'S EXPENSE WITH SIMILAR SPECIES AND QUALITY.

TREE DISPOSITION

Tree Number	Botanical Name	Common Name	DBH (Inches)	Height (FT)	Canopy (FT)	Disposition	Condition
1	Bursera simruba	Gumbo Limbo	16"	20'	25'	Remain	Good
2	Cocos nucifera	Coconut Palm	12"	25'	25'	Relocate	Good
3	Cocos nucifera	Coconut Palm	12"	25'	25'	Relocate	Good
4	Quercus virginiana	Live Oak	16"	25'	25'	-	Offsite
5	Quercus virginiana	Live Oak	16"	25'	25'	-	Offsite
6	Quercus virginiana	Live Oak	16"	25'	25'	-	Offsite
7	Quercus virginiana	Live Oak	12"	20'	20'	-	Offsite



PLANT SYMBOLS



PROJECT: 166 SE 2ND AVE, DELRAY BEACH, FL 33444  
LANDSCAPE PERMIT DRAWINGS  
CLIENT: TAQUIZA

REVISIONS:		
No.	Date	Description

SEAL: LANDSCAPE ARCHITECT: Christopher Cabezas

REGISTRATION NO. RLA 6667347  
SHEET TITLE:

TREE DISPOSITION

Scale: 1/8" = 1' - 0"  
Drawn By: CC  
Checked By: CC  
Date: 01/15/2020  
SHEET NUMBER:

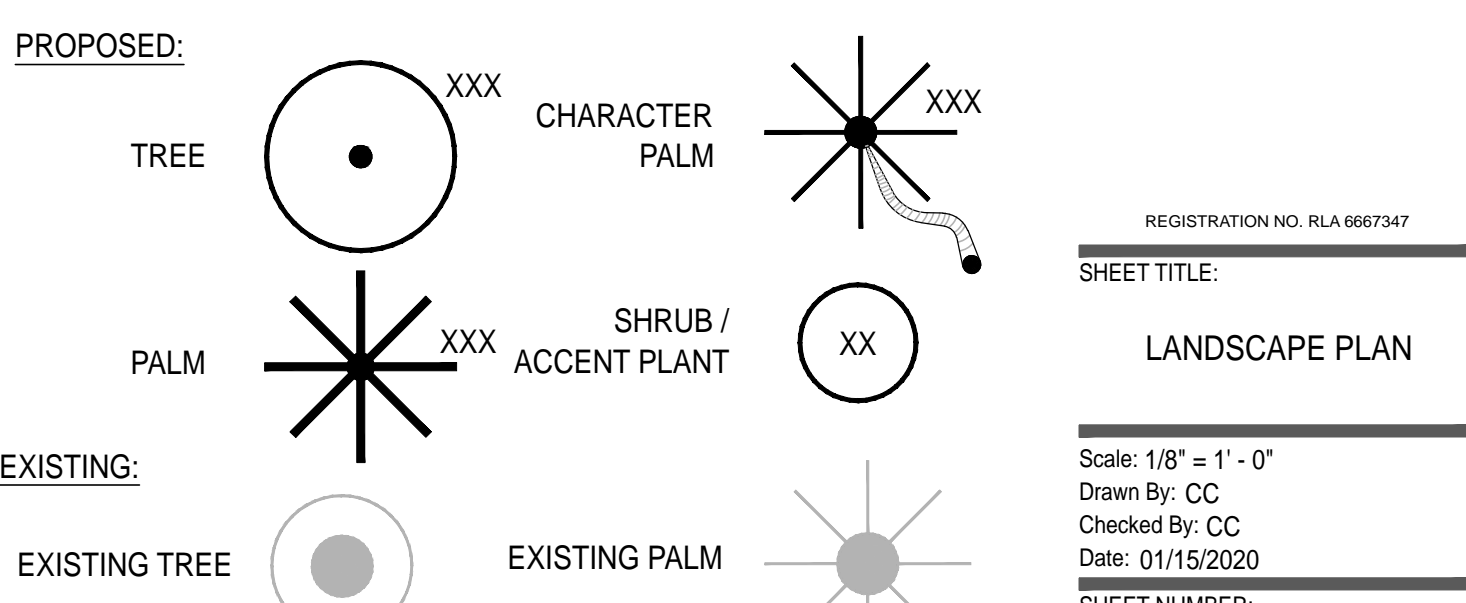
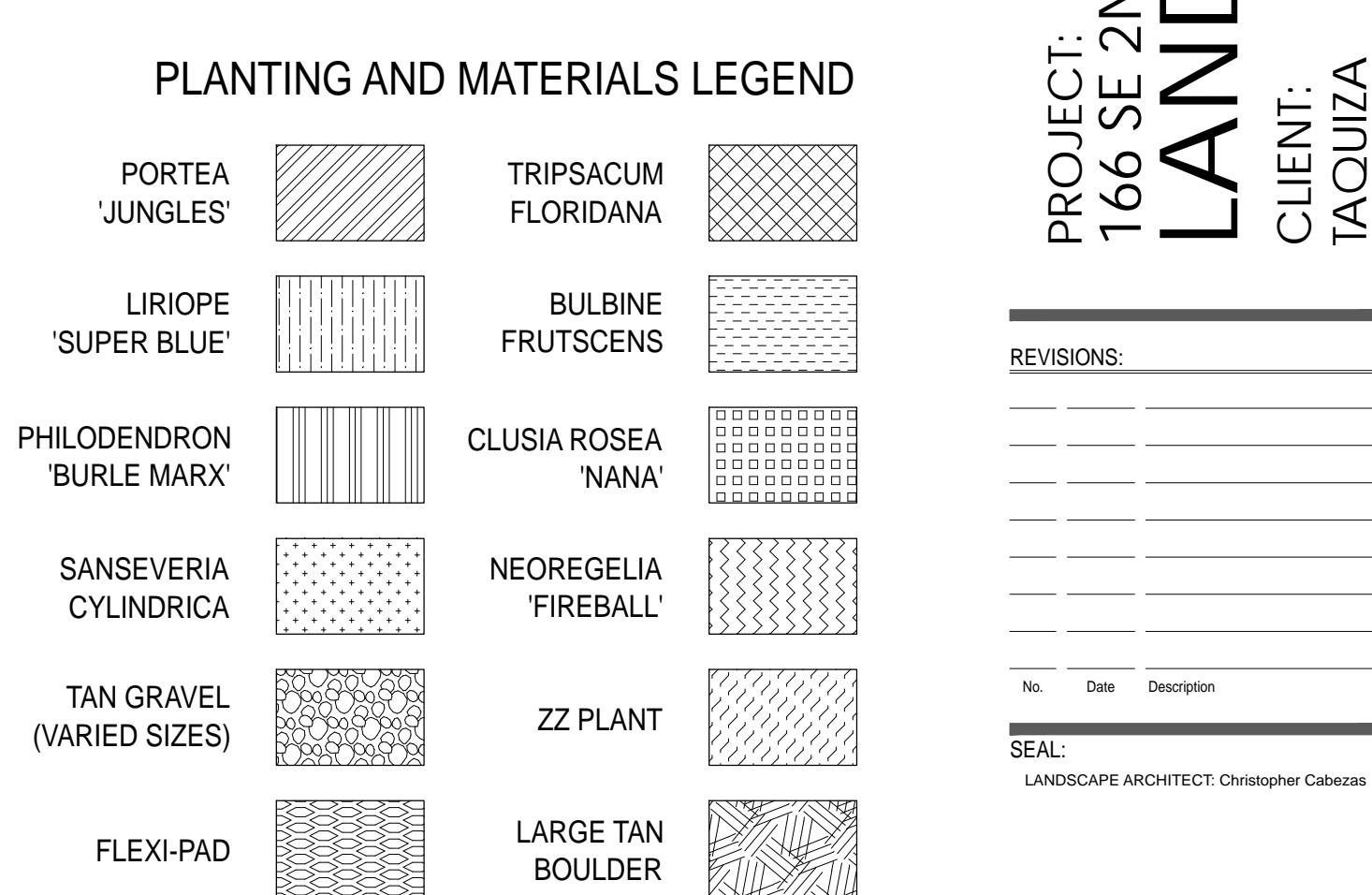
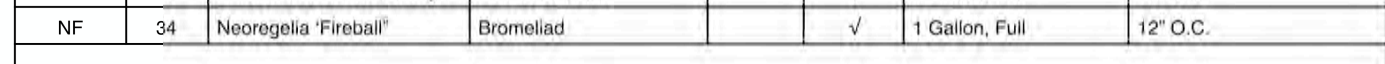
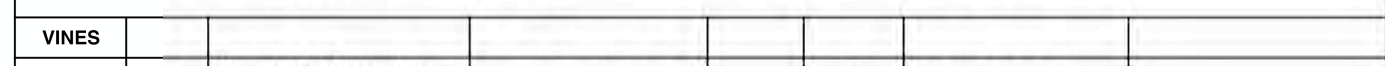
LR-1



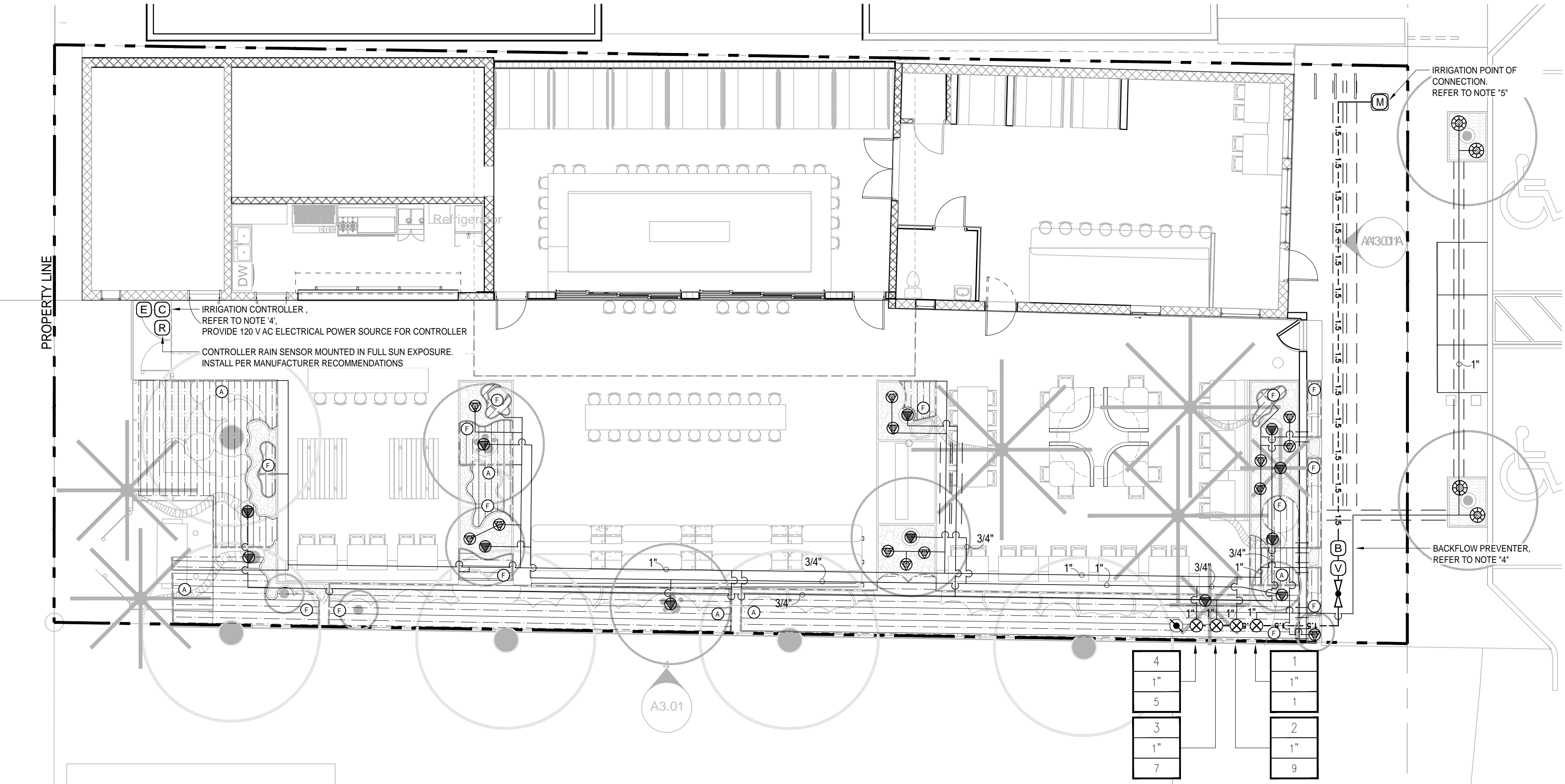
CHRIS CABEZAS  
LANDSCAPE ARCHITECTURE, INC.  
80 NE 5TH AVENUE  
DELRAY BEACH, FL 33483  
561.598.6771 | chris@cabezas.com  
www.chriscabezaslandscape.com



1. LANDSCAPE CONTRACTOR SHALL BECOME FAMILIAR WITH THE SCOPE OF WORK AS WELL AS THE SITE, DIGGING CONDITIONS, AND ANY OBSTACLES PRIOR TO SUBMITTING A BID.
2. LANDSCAPE CONTRACTOR SHOULD VERIFY ALL ESTIMATED QUANTITIES OF MATERIAL SHOWN ON THE LANDSCAPE ARCHITECT'S DRAWINGS PRIOR TO SUBMITTING A BID.
3. PLANT LIST SHALL TAKE PRECEDENCE OVER PLANTING PLAN IN CASE OF DISCREPANCIES.
4. ALL PLANT MATERIAL SYMBOLS SHOWN ON LANDSCAPE PLANS SHALL BE CONSIDERED DIAGRAMMATIC AND SHOULD BE ADJUSTED IN THE FIELD BY LANDSCAPE CONTRACTOR TO AVOID ALL UTILITIES AND ALL OTHER OBSTRUCTIONS.
5. ALL SIZES SPECIFIED FOR PLANT MATERIAL ON THE PLAN AND PLANT LIST SHALL BE CONSIDERED MINIMUM.
6. ALL PLANT MATERIAL MUST MEET OR EXCEED THE SPECIFIED MINIMUM REQUIREMENTS FOR BOTH HEIGHT AND SPREAD.
7. ALL MATERIAL SHALL BE SUBJECT TO AVAILABILITY AT TIME OF INSTALLATION.
8. ALL TREES, PALMS, SHRUBS AND GROUND COVERS SHALL BE GUARANTEED FOR A PERIOD OF 6 MONTHS FROM DATE OF FINAL ACCEPTANCE.
9. LANDSCAPE CONTRACTOR SHALL LOCATE AND VERIFY ALL UNDERGROUND UTILITIES OR STRUCTURES PRIOR TO DIGGING.
10. LANDSCAPE CONTRACTOR SHALL COORDINATE WITH THE GENERAL CONTRACTOR, THE REMOVAL OF ALL BUILDING DEBRIS AND FOREIGN MATERIAL PRIOR TO INSTALLATION OF ANY PLANT MATERIAL.
11. SITE PREPARATION SHOULD INCLUDE THE ERADICATION AND REMOVAL OF ANY WEEDS OR GRASS, REMOVAL AND CLEAN UP OF ANY DEAD MATERIAL AND ROUGH FINISH GRADING PER SPECS AND OR LANDSCAPE PLANS.
12. FOR PLANT MATERIAL DESIGNATED TO BE REMOVED, THE ENTIRE ROOT SYSTEM SHALL BE DUG AND REMOVED FROM THE SITE.
13. ALL PLANTING AREAS SHOULD RECEIVE AN 8020 MIX FILL SOIL. SAND USED IN PLANTING SOIL MIX SHALL BE 10%.
14. ALL PLANT MATERIAL SHALL BE FLORIDA NO. 1 OR BETTER AS SET FORTH IN THE FLORIDA DEPARTMENT OF AGRICULTURE GRADES AND STANDARDS FOR NURSERY PLANTS' SECOND EDITION FEB. 1998 INCLUDING REVISIONS AND WHICH MEET OR EXCEED THE SIZES INDICATED IN THE PLANTING SCHEDULE AND DETAILS.
15. ALL TREES SHALL BE STAKED IN A GOOD WORKMANLIKE MANNER, NO NAIL STAKING PERMITTED. (REFER TO GRADING NOTES AND PLANTING DETAILS).
16. AFTER REMOVAL OR RELOCATION OF EXISTING TREES AND PALMS, ALL REMAINING HOLES SHALL BE FILLED AROUND AND UNDER ROOT BALL.
17. ALL EXISTING PLANT MATERIAL TO REMAIN, SHALL BE PROTECTED DURING ALL CONSTRUCTION PHASES, ANY PLANT MATERIAL SCARRED OR DESTROYED DESIGNATED TO REMAIN MUST BE REPLACED AT THE CONTRACTOR'S EXPENSE WITH SIMILAR SPECIES SIZE AND QUALITY.
18. ALL TREES AND ALL PLANTING BEDS TO BE TOPPED WITH 3" MIN. "GRADE A" ORGANIC MULCH (REJULAN IS PERMITTED). UNLESS OTHERWISE NOTED, (CYPRESS MULCH AND RED MULCH SHALL NOT BE USED).
19. ALL TREES SHALL HAVE 2" CALIPER AT D.B.H. MINIMUM FOR A 12" HEIGHT TREE, UNLESS NOTED OTHERWISE.
20. ALL 1" GALLON MATERIAL SHALL HAVE 12" SPREAD MINIMUM. ALL 3 GALLON MATERIAL TO HAVE 18-24" SPREAD MINIMUM.
21. ALL PLANTING AREAS WITHIN THE LIMITS OF WORK SHALL RECEIVE 100% COVERAGE BY AUTOMATIC IRRIGATION SYSTEM (DIPPER PREFERRED) UNLESS OTHERWISE DIRECTED BY OWNER. IRRIGATION SHALL BE INSTALLED IN PART OR WHOLE FOR ANY PURPOSES.
22. LANDSCAPE CONTRACTOR TO COORDINATE INSTALLATION OF IRRIGATION SYSTEM WITH IRRIGATION CONTRACTOR. IRRIGATION TIME CLOCK TO BE HARD WIRED ON COMPLETION. RESPONSIBILITY OF IRRIGATION CONTRACTOR. LANDSCAPE CONTRACTOR SHALL HAND WATER OR ARRANGE FOR WATERING DURING CONSTRUCTION UNTIL IRRIGATION SYSTEM IS 100% OPERABLE. THIS IS THE RESPONSIBILITY OF THE LANDSCAPE CONTRACTOR.
23. LANDSCAPE CONTRACTOR SHALL COORDINATE HIS WORK WITH ALL OTHER APPROPRIATE CONTRACTORS.
24. THE LANDSCAPE CONTRACTOR SHALL AT ALL TIMES KEEP THE JOB SITE CLEAN AND FREE FROM ACCUMULATION OF WASTE MATERIAL, DEBRIS, AND RUBBISH.
25. LANDSCAPE PLAN SHALL BE INSTALLED IN COMPLIANCE WITH ALL LOCAL CODES.
26. THESE DRAWINGS, DOCUMENTS, AND ALL CONTENTS ARE THE PROPERTY OF CHRIS CAZEZAS LANDSCAPE ARCHITECTURE, INC. ALL RIGHTS ARE RESERVED. UNAUTHORIZED USE OR REPRODUCTION, IN PART OR WHOLE, FOR ANY PURPOSE IS UNLAWFUL AND PROHIBITED EXCEPT BY EXPRESS WRITTEN CONSENT.
27. THE CONTRACTOR IS RESPONSIBLE FOR OBTAINING ANY PERMITS OR APPROVALS FROM THE FEDERAL, STATE OR LOCAL GOVERNMENT REQUIRED FOR THE WORK INCLUDED IN THIS CONTRACT AND ON THESE DRAWINGS.
28. NOTIFY THE OWNER AND LANDSCAPE ARCHITECT OF ANY UNFORESEEN CONDITIONS, I.E., COMPACTED SOIL, SUBGRADE, POOR DRAINAGE, UNCONSOLIDATED SOIL, GROUND UTILITY OR CONCRETE OBSTACLES, OR ANY OTHER CONDITION, PRIOR TO PROCEEDING WITH LANDSCAPE INSTALLATION.
29. ALL PLANTS, MATERIALS AND WORKMANSHIP ARE SUBJECT TO THE APPROVAL OF THE LANDSCAPE ARCHITECT AND OWNER.







## IRRIGATION MATERIAL LEGEND

SYMBOL	MANUFACTURER	MODEL NO. / DESCRIPTION
	HUNTER	PROS-06-PRS30-CV POP-UP BUBBLER HEAD W/ MSBN-50Q BUBBLE NOZZLE (0.50 GPM EA. AT 30 PSI), EACH SYMBOL REPRESENTS TWO BUBBLERS PER TREE, PLACE BUBBLERS AT EDGE OF ROOTBALL ON OPPOSITE SIDES OF TREE TYPICAL.
	RAINBIRD	RWS-M-B-C-1401: MINI ROOT WATERING SYSTEM WITH 18\"/>
	HUNTER	PLD-06-12 DRIP TUBING WITH 0.60 GPH EMITTERS INTERNALLY INSTALLED IN THE DRIP TUBING AT 12\"/>
	HUNTER	SD-T SOLO-DRIP W/ 10-32 THREADS, 360°
	HUNTER	PLD 17mm BARBED FITTINGS FOR ALL CONNECTIONS BETWEEN DRIP TUBING
	HUNTER	PLD-050 17mm BARB X 1/2\"/>
	HUNTER	PLD-AVR AIR/VACUUM RELIEF VALVE INSTALLED WITH PLD075BTBEE BARB X 3/4\"/>
	HUNTER	GDFN DRIP FLUSH / INDICATOR NOZZLE, ORANGE IN COLOR, INSTALLED ONTO A HUNTER PROS-12 12\"/>
	P.O.C.	1-1/2\"/>
	WILKINS	975XLS, 1-1/2\"/>
	HUNTER	ICV-101G 1\"/>
	LASCO	SLO-CLOSE SCH. 80 PVC TRUE-UNION BALL VALVE WITH SOLVENT WELD CONNECTIONS, LINE SIZE
	HUNTER	HQ-33DLRC QUICK COUPLER VALVE, INSTALL WITHIN 10\"/>
	HUNTER/ TORO	ICV-101G-FS (1\"/>
	RAIN BIRD	CONTROLLER SHALL BE A ESP-36LXMEF SERIES, 12-STATION BASE CONTROLLER WITH FLOW SMART MODULE AND 2x ESPLXMSM12 12-STATION MODULES FOR TOTAL CAPACITY OF 36-STATIONS. CONTROLLER SHALL BE INSTALLED AT LOCATION SHOWN ON PLANS, APPROXIMATELY 4-6\"/>
	RAIN BIRD	RSD-BEX SERIES RAIN SENSOR WITH METAL BRACKET, MOUNT TO TOP OF WALL IN FULL SUN EXPOSURE AND WIRE TO CONTROLLER
	N/A	120 VOLT ELECTRICAL POWER, PROVIDED BY ELECTRICIAN, VERIFY ACTUAL LOCATION IN FIELD
	AS APPROVED	PVC PIPE 3/4\"/>
	AS APPROVED	PVC PIPE 1-1/2\"/>
	AS APPROVED	PVC PIPE SCH. 40 AS SLEEVING, 2 TIMES THE DIAMETER OF PIPE OR WIRE BUNDLE CARRIED PLACE BELOW ALL PAVING, HARDSCAPE ETC. AND AS DIRECTED BY OWNER'S AUTHORIZED REPRESENTATIVE.
	LASCO	ALL FITTINGS USED WITH SOLVENT WELD MAINLINE PIPE SHALL BE SCH. 80 PVC FITTINGS, GRAY IN COLOR, AND SIZED TO MATCH THE MAINLINE PIPE. ALL FITTINGS USED WITH SOLVENT WELD LATERAL LINE PIPE SHALL BE SCH. 40 PVC, WHITE IN COLOR, AND SIZED TO MATCH THE LATERAL LINE PIPE. ALL THREADED PVC NIPPLES SHALL BE SCH. 80 PVC PIPE WITH MOLDED THREADS.
	PAIGE ELECTRIC	P7079D POLYETHYLENE INSULATED, SOLID COPPER CONDUCTOR IRRIGATION CONTROL WIRE #14UF AWG DIRECT BURIAL (U.L. APPROVED)
	GPH IRRIGATION	GOBRY6 DIRECT BURIAL WIRE CONNECTORS FOR USE ON ALL WIRE SPLICES AND CONNECTIONS
	RAIN BIRD	VB SERIES VALVE BOXES. BLACK BOXES AND BLACK LIDS WITH PENTA HEAD BOLT, WASHER AND CLIP

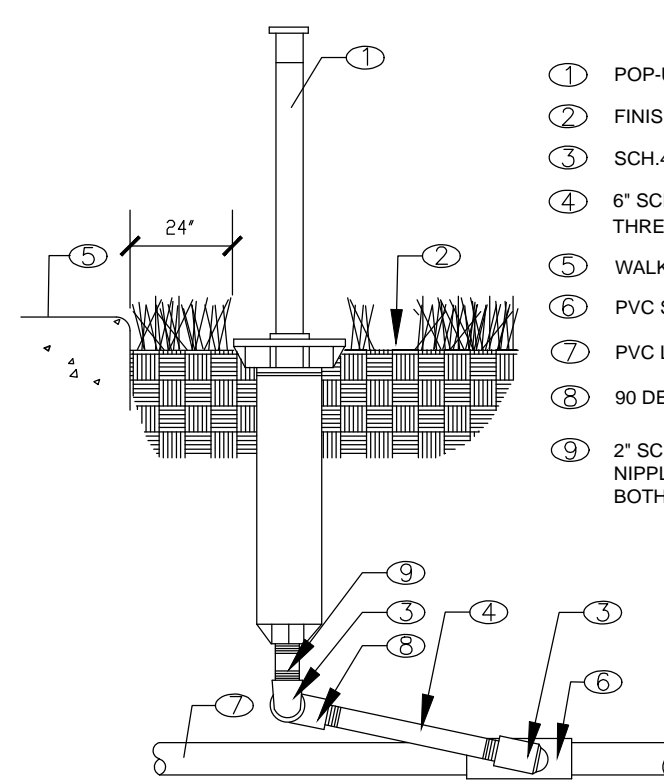
DESCRIPTION	(BLACK BOXES AND BLACK LIDS)
7" ROUND BOXES	VB-7RNDB (BOX) AND VB-7RNDBLK (LID)
10" ROUND BOXES	VB-10RNDB (BOX) AND VB-10RNDBLK (LID)
STANDARD RECTANGULAR BOXES	VB-STDB (BOX) AND VB-STDBLK (LID)
JUMBO RECTANGULAR BOXES	VB-JMBB (BOX) AND VB-JMBBLK (LID)

### VALVE CALLOUT LEGEND

	STATION NUMBER
	VALVE SIZE IN INCHES
	FLOW RATE IN G.P.M.

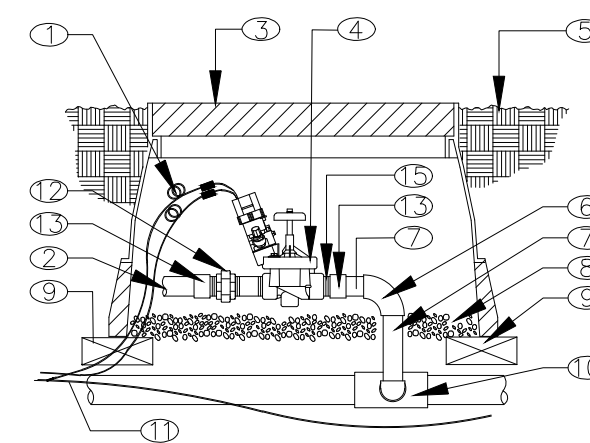
## IRRIGATION NOTES

- PIPE SIZES SHALL CONFORM TO THOSE SHOWN ON THE DRAWINGS. NO SUBSTITUTIONS OF SMALLER PIPE SIZES SHALL BE PERMITTED, BUT SUBSTITUTIONS OF LARGER SIZES MAY BE APPROVED. ALL DAMAGED AND REJECTED PIPE SHALL BE REMOVED FROM THE SITE AT THE TIME OF SAID REJECTION.
- ALL MAINLINE, LATERAL LINE AND CONTROL WIRE CONDUIT UNDER PAVING SHALL BE INSTALLED IN SEPARATE SLEEVES. SLEEVES SHALL BE A MINIMUM OF TWICE (2X) THE DIAMETER OF THE PIPE TO BE SLEEVED.
- INSTALL ALL BACKFLOW PREVENTION DEVICES AND ALL PIPING BETWEEN THE POINT OF CONNECTION AND THE BACKFLOW PREVENTER AS PER LOCAL CODES.
- FINAL LOCATION OF THE BACKFLOW PREVENTER AND AUTOMATIC CONTROLLER SHALL BE APPROVED BY THE OWNER'S AUTHORIZED REPRESENTATIVE.
- VERIFY THE ACTUAL METER LOCATION, SIZE AND WATER PRESSURE IN THE FIELD PRIOR TO STARTING WORK. IF ANY OF THE POC INFORMATION SHOWN ON THESE DRAWING IS FOUND TO BE DIFFERENT THAN THE ACTUAL POC INFORMATION GATHERED IN THE FIELD, IMMEDIATELY NOTIFY THE LANDSCAPE ARCHITECT AND IRRIGATION CONSULTANT.
- 120 VAC ELECTRICAL POWER SOURCE AT CONTROLLER LOCATION SHALL BE PROVIDED BY OTHERS. THE ELECTRICAL CONTRACTOR SHALL MAKE THE FINAL CONNECTION FROM THE ELECTRICAL SOURCE TO THE CONTROLLER.
- ALL SPRINKLER HEADS SHALL BE SET PERPENDICULAR TO FINISH GRADE UNLESS OTHERWISE SPECIFIED.
- THE IRRIGATION CONTRACTOR SHALL FLUSH AND ADJUST ALL SPRINKLER HEADS AND VALVES FOR OPTIMUM SPRAY WITH MINIMAL OVERSPRAY ONTO WALKS, STREETS, WALLS, ETC.
- THIS DESIGN IS DIAGRAMATIC. ALL PIPING, VALVES, ETC., SHOWN WITHIN PAVED AREAS IS FOR DESIGN CLARIFICATION ONLY AND SHALL BE INSTALLED IN PLANTING AREAS WHEREVER POSSIBLE. THE CONTRACTOR SHALL LOCATE ALL VALVES IN SHRUB AREAS WHERE POSSIBLE.
- IT IS THE RESPONSIBILITY OF THE IRRIGATION CONTRACTOR TO FAMILIARIZE HIMSELF WITH ALL GRADE DIFFERENCES, LOCATION OF WALLS, RETAINING WALLS, STRUCTURES AND UTILITIES. THE IRRIGATION CONTRACTOR SHALL REPAIR OR REPLACE ALL ITEMS DAMAGED BY HIS WORK. HE SHALL COORDINATE HIS WORK WITH OTHER CONTRACTORS FOR THE LOCATION AND INSTALLATION OF PIPE SLEEVES THROUGH WALLS, UNDER ROADWAYS AND PAVING, ETC.
- DO NOT WILLINGLY INSTALL THE SPRINKLER SYSTEM AS SHOWN ON THE DRAWINGS WHEN IT IS OBVIOUS IN THE FIELD THAT UNKNOWN OBSTRUCTIONS, GRADE DIFFERENCES OR DIFFERENCES IN THE AREA DIMENSIONS EXIST THAT MIGHT NOT HAVE BEEN CONSIDERED IN THE ENGINEERING. SUCH OBSTRUCTIONS OR DIFFERENCES SHOULD BE BROUGHT TO THE ATTENTION OF THE OWNER'S AUTHORIZED REPRESENTATIVE. IN THE EVENT THIS NOTIFICATION IS NOT PERFORMED, THE IRRIGATION CONTRACTOR SHALL ASSUME FULL RESPONSIBILITY FOR ANY REVISIONS NECESSARY.
- ALL SPRINKLER EQUIPMENT NOT OTHERWISE DETAILED OR SPECIFIED SHALL BE INSTALLED AS PER MANUFACTURER'S RECOMMENDATIONS AND SPECIFICATIONS.
- THE IRRIGATION CONTRACTOR SHALL INSTALL CHECK VALVES ON ALL HEADS IN AREAS WHERE FINISH GRADE EXCEEDS 4:1, WHERE POST VALVE SHUT-OFF DRAINING, OF THE IRRIGATION HEAD OCCURS OR AS DIRECTED BY THE OWNER'S AUTHORIZED REPRESENTATIVE.
- THE CONTRACTOR SHALL PROVIDE 1800 PCS (PRESSURE COMPENSATING SCREENS) AS NECESSARY TO REDUCE OR ELIMINATE OVERSPRAY ONTO STREETS, WALKS OR OTHER AREAS AS DIRECTED BY THE OWNER'S AUTHORIZED REPRESENTATIVE.
- ALL CONTROL WIRES SHALL BE INSTALLED IN PVC CONDUIT.
- ALL REMOTE CONTROL VALVES, GATE VALVES, QUICK COUPLERS, CONTROL WIRE AND COMPUTER CABLE PULL POINTS SHALL BE INSTALLED IN APPROVED VALVES BOXES WITH COVERS.
- LATERAL LINE AND MAINLINE PIPING WITHIN BUILDING SHALL BE TYPE B COPPER AND IS SHOWN FOR CLARITY ONLY. ACTUAL DESIGN AND ROUTING SHALL BE COMPLETED BY PLUMBING ENGINEER AND INSTALLED BY PLUMBING CONTRACTOR. ALL PIPING THROUGH THE BUILDING TO EXTERIOR AND THROUGH BUILDING TO UPPER FLOOR SHALL BE PROVIDED BY PLUMBER.



## 1 POP-UP SPRINKLER/TREE BUBBLER

N.T.S.



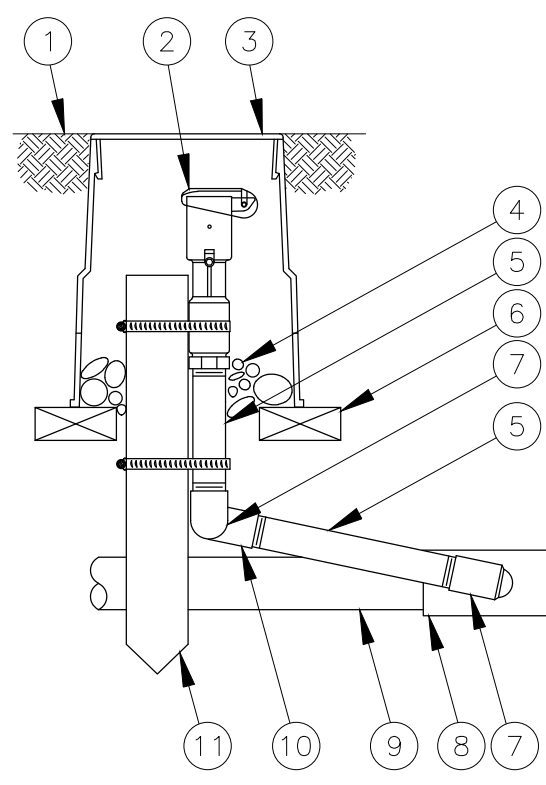
NOTES:

- ALL WIRE TO BE INSTALLED PER LOCAL CODES.
- PROVIDE EXPANSION COILS AT EACH WIRE CONNECTION IN VALVE BOX. WRAP AROUND 1/2\"/>
- COMPACT SOIL AROUND VALVE BOX TO SAME DENSITY AS UNDISTURBED ADJACENT SOIL.
- INSTALL ONLY 1 VALVE PER VALVE BOX.
- TEFLON TAPE ALL THREADS.
- INSTALL IN SHRUB AREAS ONLY AND A MINIMUM OF 12\"/>

- BRICK SUPPORT (1) AT EACH CORNER
- PVC MAINLINE FITTINGS
- CONTROLLER WIRES
- LASCO SCH 80 UNION
- PVC MALE ADAPTER

## 3 REMOTE CONTROL VALVE

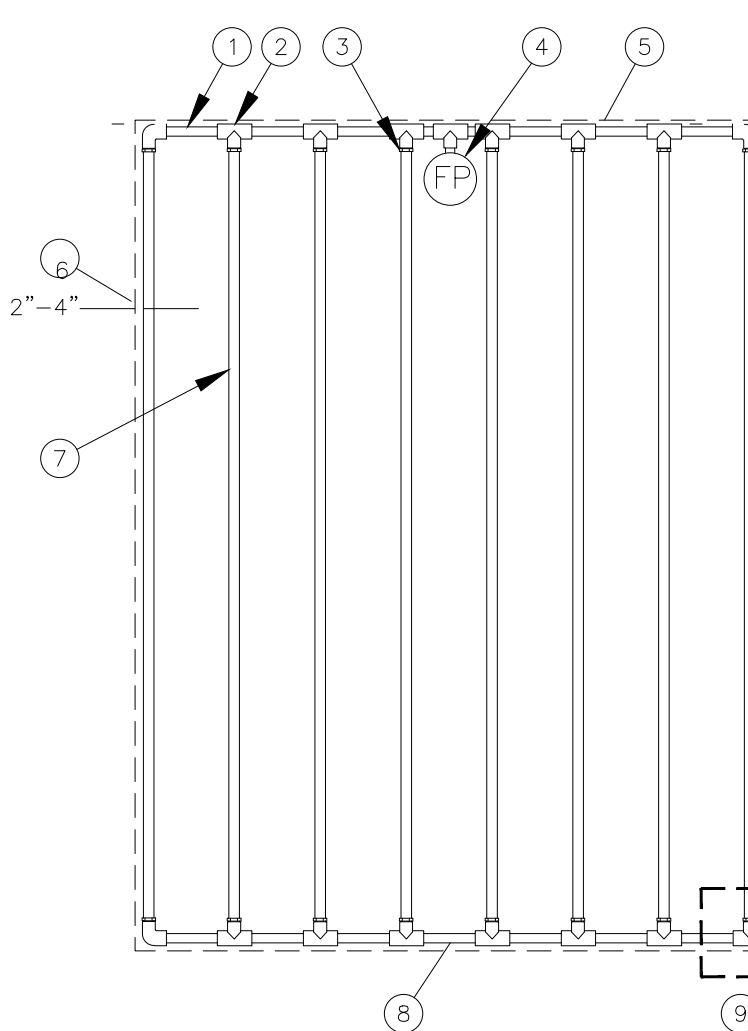
N.T.S.



NOTE: FURNISH FITTINGS AND PIPING NOMINALLY SIZED IDENTICAL TO NOMINAL QUICK COUPLING VALVE INLET SIZE.

## 6 QUICK COUPLING VALVE

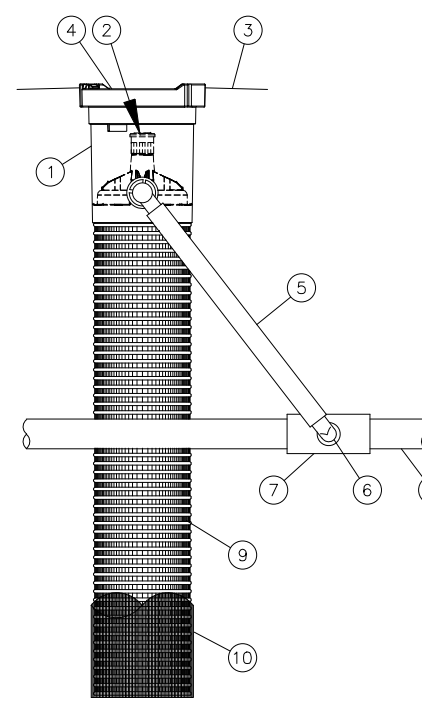
N.T.S.



NOTES:

- DISTANCE BETWEEN LATERAL ROWS AND EMITTER SPACING TO BE BASED ON SOIL TYPE, PLANT MATERIALS AND CHANGES IN ELEVATION. SEE INSTALLATION SPECIFICATIONS ON RAIN BIRD WEB SITE (WWW.RAINBIRD.COM) FOR SUGGESTED SPACING.
- LENGTH OF LONGEST DRIPLINE LATERAL SHOULD NOT EXCEED THE MAXIMUM SPACING SHOWN IN THE ACCOMPANYING TABLE.
- WHEN USING 17MM INSERT FITTINGS WITH DESIGN PRESSURE OVER 50PSI, IT IS RECOMMENDED THAT STAINLESS STEEL CLAMPS BE INSTALLED ON EACH FITTING.

## 8 DRIP IRRIGATION

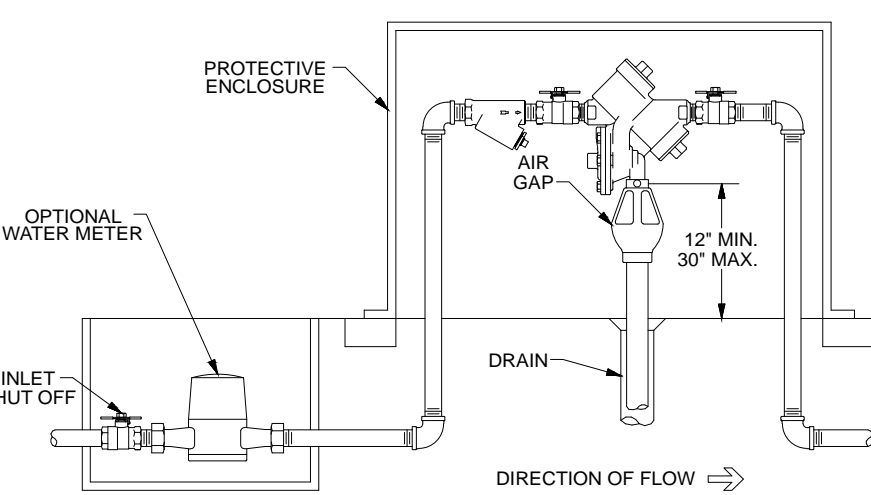


NOTES:

- 1\"/>
- INSTALL PRODUCT SO THAT THE GRATE IS EVEN WITH FINISH GRADE OR TOP OF MULCH.
- OPTIONAL SAND SOCK (RWS SOCK) IS 3/4\"/>
- WHEN INSTALLING IN EXTREMELY HARD OR CLAY SOILS, ADD 3/4\"/>
- ONCE RWS HAS BEEN INSTALLED FILL THE BASKET WITH PEA GRAVEL BEFORE LOCKING LID.

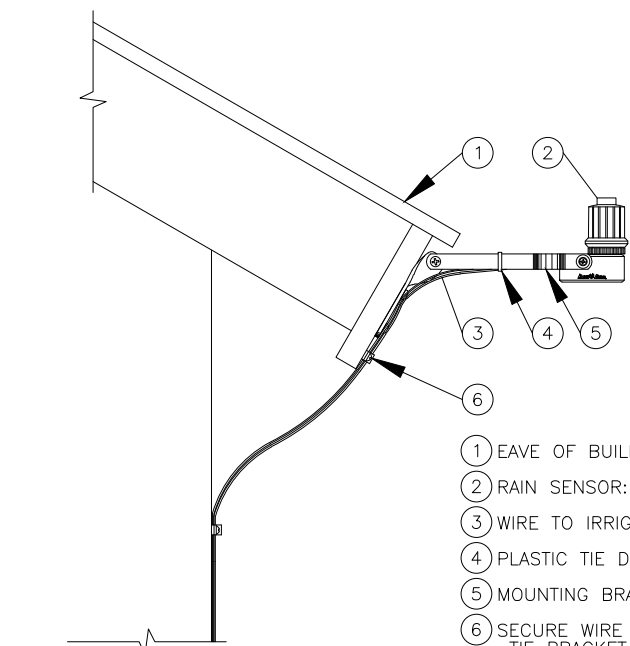
## 2 ROOT WATERING SYSTEM

N.T.S.



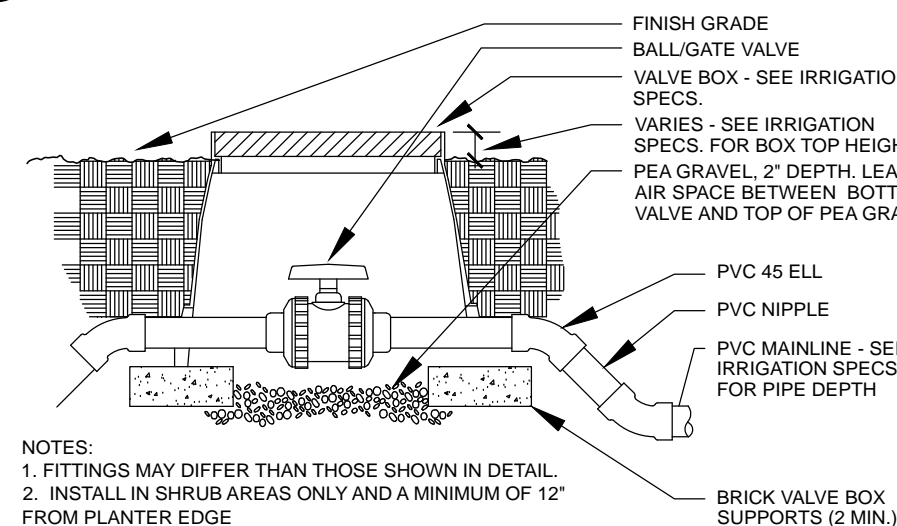
## 4 R/P BACKFLOW PREVENTER - HORIZONTAL

N.T.S.



## 5 RAIN SENSOR (RSD-BEX)

N.T.S.



NOTES:  
1. FITTINGS MAY DIFFER FROM THOSE SHOWN IN DETAIL.  
2. INSTALL IN SHRUB AREAS ONLY AND A MINIMUM OF 12\"/>

## 7 BALL VALVE

N.T.S.

### FLORIDA BUILDING CODE- APPENDIX F PART V- A-6

WATER PIPE SIZE	SLEEVE SIZE
3/4"	1 1/2"
1"	2"
1 1/4"	2 1/2"
1 1/2"	3"
2"	4"
3"	6"
4"	8"

SLEEVES TO EXTEND A MIN. 3\"/>

### FLORIDA BUILDING CODE- APPENDIX F PIPE INSTALLATION-DEPTH OF COVER

VEHICLE TRAFFIC AREAS	
PIPE SIZE (INCHES)	DEPTH OF COVER (INCHES)
1/2" TO 2 1/2"	18" TO 24"
3" TO 5"	24" TO 30"
6" OR GREATER	30 TO 36"
NON-TRAFFIC AND NON-CULTIVATED AREAS	
PIPE SIZE (INCHES)	DEPTH OF COVER (INCHES)
1/2" TO 1 1/4"	6" TO 12"
1 1/2" TO 2"	12" TO 18"
2 1/2" TO 3"	18" TO 24"
4" OR LARGER	24" TO 36"

### XFCV Dripline Maximum Lateral Lengths (Feet)

Inlet Pressure psi	12" Spacing Nominal Flow (gph)	18" Spacing Nominal Flow (gph)
0.6	0.9	0.6
20	192	136
40	289	205
50	397	281
60	436	309

CHRIS CABEZAS  
LANDSCAPE ARCHITECTURE, INC.

80 NE 5TH AVENUE  
DELRAY BEACH, FL 33483  
561.596.6771 | chris@cabezas.com  
www.chriscabezaslandscape.com

PROJECT: 166 SE 2NS AVE, DELRAY BEACH, FL 33444  
LANDSCAPE PERMIT DRAWINGS

CLIENT: TAQUIZA

REVISIONS:

No. Date Description

SEAL:

LANDSCAPE ARCHITECT Christopher Cabezas

REGISTRATION NO. RL6667347

SHEET TITLE:

IRRIGATION PLAN,  
NOTES AND DETAILS

Scale: 1/8" = 1' - 0"

Drawn By: JS

Checked By: CC

Date: 01/17/2020

SHEET NUMBER:

IR-1