



TREE#	NAME/ DIAMETER/ CONDITION		DISPOSITION
1	Qvt	Quercus virginiana/ Live oak tree - 15" calip	RU
2	Qvt	Quercus virginiana/ Live oak tree - 12" calip	RU
3	Qvt	Quercus virginiana/ Live oak tree - 18" calip	RU
4	Qvt	Quercus virginiana/ Live oak tree - 20" calip	RU
5	Sp	Sabal palm 8" calip	RU
6	Cnp	Cocos nucifera palm / Coconut palm 18" calip	RU
7	Sp	Sabal palm 20' o.a.	RU
8	Ficus	Ficus benjamina / Ficus	RU
9	Sp	Sabal palm 16' o.a.	RU
10	Amp-18	Adonidia merillii / Christmas palm 18' o.a.	RU
11	Amp-18	Adonidia merillii / Christmas palm 18' o.a.	RU
12	Qvt	Quercus virginiana/ Live oak tree - 12" calip	RU

REL = RELOCATE
TBR = TO BE REMOVED
RU = REMAIN UNCHANGED
**_- (See Mitigation Chart Landscape Plan)

1. All canopy trees designated as relocated on the plans, are to be root-pruned for a minimum of 3 months prior to the relocation process.
2. The root ball size for each tree will depend on the caliper of the individual tree to be relocated. The size of the root ball shall be adequate to support & sustain the viability of the individual tree.
3. All root cuts shall be "clean cuts", and the back fill material shall be well drained planting soils, or pre-approved equal. All road rock, and undesirable fill materials shall be removed from root-prune trench.
4. Temporary irrigation shall be provided to all root-pruned trees during the root-pruning process, and after the tree's have been relocated to their location for a minimum of 4 months, or as necessary to insure their survivability.
5. The canopies of all tree's shall be reduced by a minimum of 20% at time of root pruning.
6. All tree's shall be relocated with machinery (i.e., crane, front-end loader, tree spade, or equal) capable of handling the material without damaging any portion of the tree. The Landscape Architect will pre-approve all methods utilized for the relocation process.
7. All relocation work shall comply with the National Arborists Standards.

1. All tree's to be removed shall be completely removed from the site.
2. The root systems, of the removals, shall be removed in such a manner to facilitate the installation of new tree's, or palms. Root system removal shall be a minimum of 24" depth, and a 6 foot diameter around the trunk.
3. **TREE REMOVAL PERMITS WILL BE REQUIRED BY THE GOVERNING MUNICIPALITY, AND IT SHALL BE THE CONTRACTORS RESPONSIBILITY TO OBTAIN ALL NECESSARY PERMITS.**

New Materials To conform To City Of Ft. Lauderdale Requirements. All Tree Replacements Shall Also Replace Said Tree's Caliper Inches So As To Maintain Caliper Sizes. All Tree Replacements Shall Be Florida #1 Grade.

	Trees To Be Relocated
	Trees To Be Removed Due To Poor Condition, Branching Structure. Low Crotch Or Damaged Trunk Structures

[illegible]

DESIGNED BY:
CARTER & ASSOCIATES
LANDSCAPE ARCHITECTS INC.
74 N.E. 5th AVE. Delray Beach, FL 33483
561-272-9621 LA. 831

Landscape for:

Delray Park Plaza

1311-1319 N. Federal Hwy.
Delray Beach, Florida

DRAWN
SKP
CHECKED
D.H.C.
DATE
12.09.19
SCALE
1" = 10'-0"
JOB NO.
102219
SHEET
L-1
OF 5 SHEETS

GENERAL LANDSCAPE NOTES:

1. All plant material shall be F1, #1, or better, as per the latest addition of F1, Grades & standards. All "specimen" quality materials shall be F, Fancy, and shall be pre-approved by the Landscape Architect.
2. All plant materials shall be true to name & size, as per F1, Grades & Standards. Plant materials which do not meet, or exceed these standards will not be accepted.
3. Quantities, sizes, and locations of plants will be determined by the plan and material schedule. Sizes of the specified plants shall take precedence over the container size. Spacing of the ground covers will be determined by the material schedule. Quantities shown on the material schedule are to be used as a guideline. The landscape contractor shall be responsible for the actual quantities shown on the plan. The plans will take precedence over the material schedule. Discrepancies shall be brought to the attention of the Landscape Architect, prior to commencing.
4. No substitutions shall be accepted without the Landscape Architect's written approval. All substitution requests shall be made in writing.
5. Planting soils shall be clean, sterile, and free of debris. Soil shall consist of 50% Fl. muck % 50% clean sand. Tree's shall be installed with a minimum of 12" on sides & bottom of root balls. Shrubs, plants & ground covers shall be installed with a minimum of 6" on sides & bottom of root balls. Rooted cuttings shall be installed with a minimum of 4" of planting soils worked into the top 6" of the existing soils. Sabal palms and Phoenix specie shall be installed with a clean well drained sand.
6. Milarganite, or equal, fertilizer shall be applied to all plantings, per manufactures recommendations. In addition, "Agriform" tablets (20-10-5) shall also be applied to all plants 1 gal., and above, per manufactures recommendations.
7. All tree's & palms shall be mulched with arsenic free mulch with a 3ft. diameter circle. 3" minimum depth. All planting beds shall receive 3" finished depth, mulch upon completion of planting process. Mulch shall "Eucalyptus", or approved equal. NO CYPRESS MULCH SHALL BE UTILIZED ON THE PROJECT.

GENERAL LANDSCAPE NOTES (CONT'D):

8. All plants shall be planted at soil levels which they were previously grown. Shrubs and hedges are to be planted 2ft. away from any wall, or structures. Materials with a six greater than overhangs shall be planted so as not to impede the natural growth habit of the plant.
9. All materials are to be watered-in immediately after planting, so as to remove all air pockets. BIB materials are to be hand-watered for a minimum of 1 week after installation, and there-after as required. Contractor shall advise the owner of any additional hand-watering requirements.
10. All tree's 8ft., or larger, are to be staked, or guyed, to provide ample support such that materials remain straight & true in an up-right position through the guarantee period. Staking & guying shall be performed at the option of the landscape contractor, except where required by code. However, the landscape contractor shall be responsible for all tree's & palms remaining straight & true through the guarantee period. In the event that a material shifts after it has been properly staked, or guyed, the landscape contractor shall not be held responsible.
11. All sod shall be "Floritam", unless otherwise specified. Sod shall be dense, green, well-rooted, and free of debris, weeds, disease, or insects. A complete 6-6-6 fertilizer shall be applied at a rate of 10lbs. per 1,000sq.ft. Sod is to be watered to a depth of 3" immediately after installation. Grades are to be raked smooth, and all debris removed, prior to installation.
12. All tree's, palms, plants & ground-covers shall be guaranteed for a period of 360 days, after the date of substantial completion. Phoenix canariensis & dactylifera palms are to be maintained, per growers/suppliers recommendations, by a qualified person, or firm. Said maintenance program shall be the responsibility of the owner. The landscape invoice will be deemed as rejection of the plant materials. The landscape contractor shall remove any, or all of the rejected materials from the site as their discretion.
14. The removal of "base rock" is not included in the landscape contract.
15. All grades are to be within 2" of finished grades, prior to the landscape contractor commencing work.

LANDSCAPE CALCULATION TABLE:

SITE DATA

A. TOTAL LOT AREA	30,585 SQ.FT.
B. TOTAL PAVED IMPERVIOUS AREA	25,602 SQ.FT.
C. REQ'D INTERIOR GREENSPACE (10% TOTAL PAVED AREA)	2,560 SQ.FT.
D. INTERIOR GREENSPACE PROVIDED	4,448 SQ.FT.
E. TOTAL # OF TREES REQ'D (1 PER 125 SQ.FT. OF REQ'D GREENSPACE)	26 TREES
F. NUMBER OF INTERIOR TREES PROVIDED	26 TREES
G. PERIMETER GREENSPACE REQ'D (DEPTH OF BUFFER X LENGTH)	1,765 SQ.FT.
H. NUMBER OF PERIMETER TREES REQ'D (1 PER 30 LIN. FT.)	6 TREES
I. NUMBER OF PERIMETER TREES PROVIDED	10 TREES

XERISCAPE CALCULATIONS

A. REQ'D SHRUBS & GROUND COVERS (30% OF REQ'D INTERIOR & PERIMETER GREENSPACE)	1,267.5 SQ.FT.
B. SHRUBS & GROUND COVER PROVIDED	4,448 SQ.FT.
C. REQ'D NATIVE PLANT MATERIALS (25% OF REQ'D SHRUBS & GROUND COVERS)	318 SQ.FT.
D. NATIVE PLANT MATERIALS PROVIDED	2,510 SQ.FT.
E. NUMBER OF NATIVE TREES REQ'D (50% OF REQ'D TREES)	16 TREES
F. NUMBER OF NATIVE TREES PROVIDED	20 TREES

MATERIAL SCHEDULE-TREES & PALMS

Qty.	Key	Botanical / common name	Size
4	Vmp-T	Veitchia Montgomeriana / Montgomery Palm, triple	16' c.t., Triple
4	MfT	Myrcianthes fragrans / Simpson stopper tree	12' x 5', 6' c.t. (3 Stem max)
11	Cest*	Conocarpus E. Serelius / Silver buttonwood tree	14-16' x 6' o.a., 6' c.t., 2" calip. min.
6	Cet*	Conocarpus erectus / Green Buttonwood Tree	16' x 7', 7' c.t., 4" calip. matching
5	Lit	Lagerstroemia indica / Crape myrtle	14-16' x 7' o.a., 7' c.t., watermelon red
6	Cap*	Copernicia alba / Carandly Palm	18", 20", 22" o.a., heavy calip. specimens
7	Lgp	Licuala grandis / Licuala Palm	3' x 3' specimens
1	Bst*	Bursera Simaruba / Gumbo limbo tree	16' x 7', 7' c.t., 5" calip.

MATERIAL SCHEDULE-SHRUBS

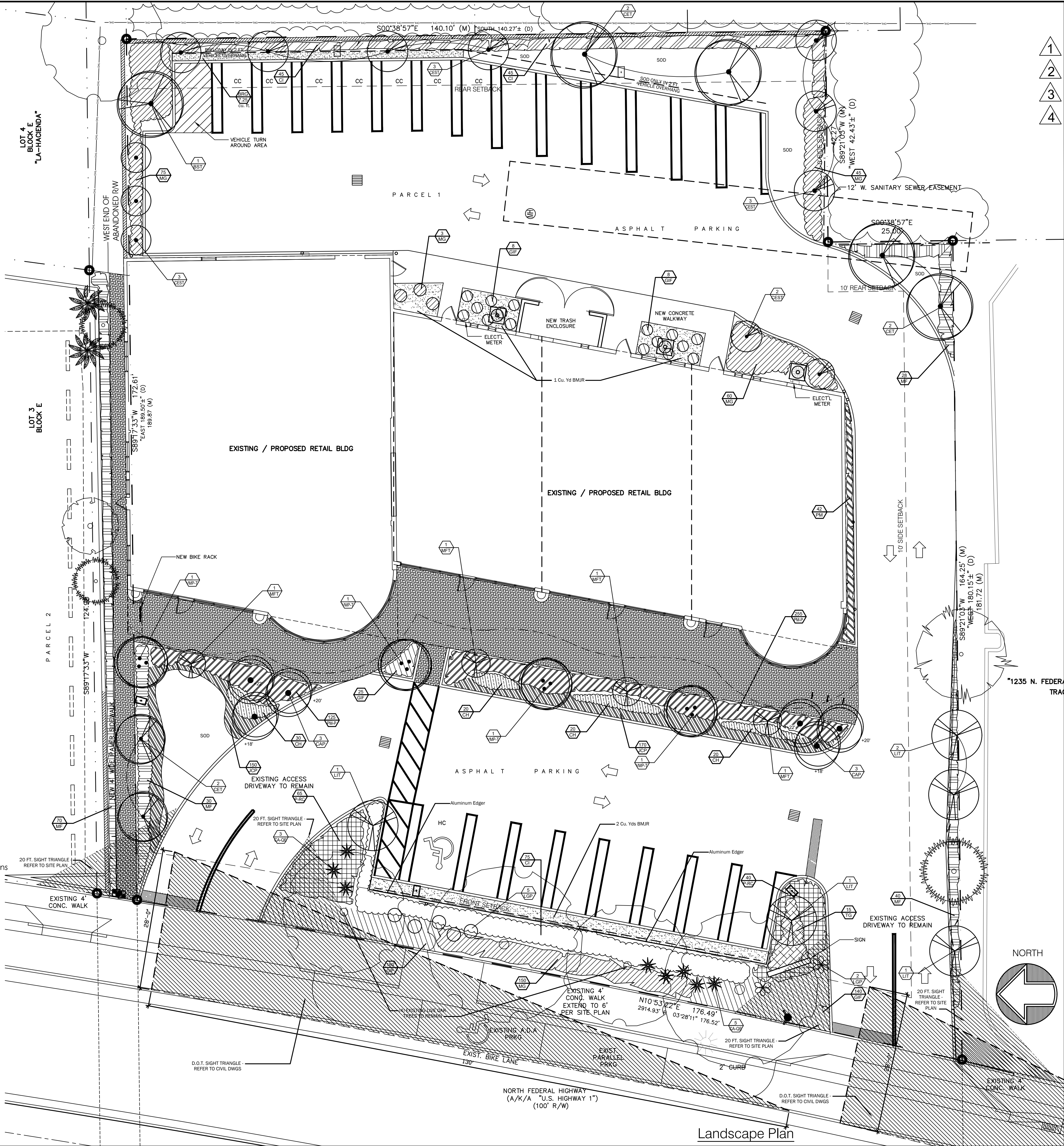
Qty.	Key	Botanical / common name	Size
105	P-rc	Philodendron rojo congo / Red congo	18" 3g. @ 24" o.c.
361	Gif*	Ficus microcarpa / Green island ficus	18" 3g. @ 15" o.c.
165	Cr*	Chrysobalanus icaco / Cocoplum	24" 3g. @ 24" o.c.
333	Mg*	Muhly Grass	15" 3g. @ 15" o.c.
380	Pm-P	Podocarpus pringles / Podocarpus	15" 3g. @ 18" o.c.
42	Pm	Podocarpus maki / Yew	30" 3g. @ 24" o.c.
168	Mf*	Myrcianthes fragrans / Simpson stopper	24" 3g. @ 24" o.c.
15	Tg	Thyralis glauca / Yellow thyralis	18" 3g. @ 24" o.c.
90	Ch	Codiaeum variegatum / Croton bravo	15" 3g. @ 18" o.c.
320	Jcp	Juniperus chinensis, Parsonii / Parson's Juniper	15" 3g. @ 24" o.c.
8	Ca-Qe*	Crinum Augustum / Queen emma	30" x 30"

3 Cu. Yd. - BMJR - Brown Mexican Jack Rock (1/2" dia.) 2" thick on Typar Filter Fabric
7.25 Cu.Yd. - BRG - Brown River Gravel min. 1" thick on Typar Filter Fabric

4" Aluminum Edger, Black

* - Denotes native, or highly drought tolerant plant materials, per SFWMD. "Xeriscape Manual".

Planting soils & mulch, see specs. & details
Sod, Solid Floritam



- 1
- 2
- 3
- 4

REVISIONS	BY
2/3/20 Revised per Arch'l Site Plan	TE
6/26/20 Revised per Arch'l Site Plan	TE
7/26/20 Revised per Review Comments	TE
9/30/20 Rev per City Cmnts & Rev'd Site Plan	TE

DESIGNED BY:
CARTER & ASSOCIATES
LANDSCAPE ARCHITECTS INC.
74 N.E. 5th AVE. Delray Beach, FL 33483
LA. 831
561-272-9621

Landscape for:
Delray Park Plaza
1311-1319 N. Federal Hwy.
Delray Beach, Florida

DRAWN	SKP
CHECKED	D.H.C.
DATE	12.09.19
SCALE	1" = 10'-0"
JOB NO.	102219
SHEET	L-2
OF	5
SHEETS	

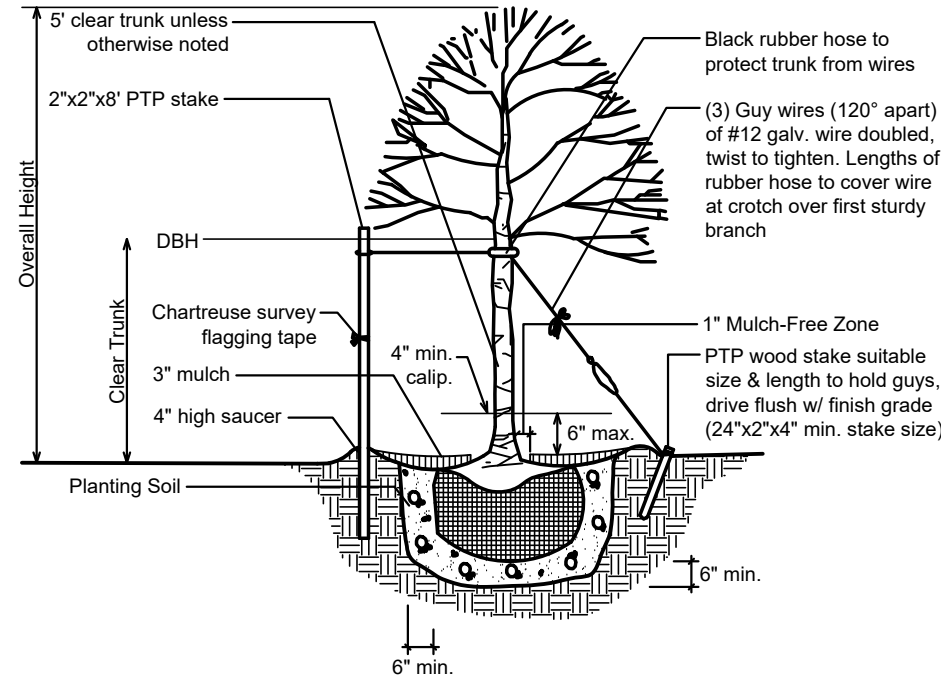
REVISIONS	BY
2/3/20 Revised per Arch'l Site Plan	TE
6/26/20 Revised per Arch'l Site Plan	TE
7/26/20 Revised per Review Comments	TE
9/30/20 Rev per City Cmnts & Rev'd Site Plan	TE

DESIGNED BY:
CARTER & ASSOCIATES
LANDSCAPE ARCHITECTS INC.
74 N.E. 5th Ave. Delray Beach, FL 33483
LA. 831
561-272-9621

Landscape for:
Delray Park Plaza
1311-1319 N. Federal Hwy.
Delray Beach, Florida

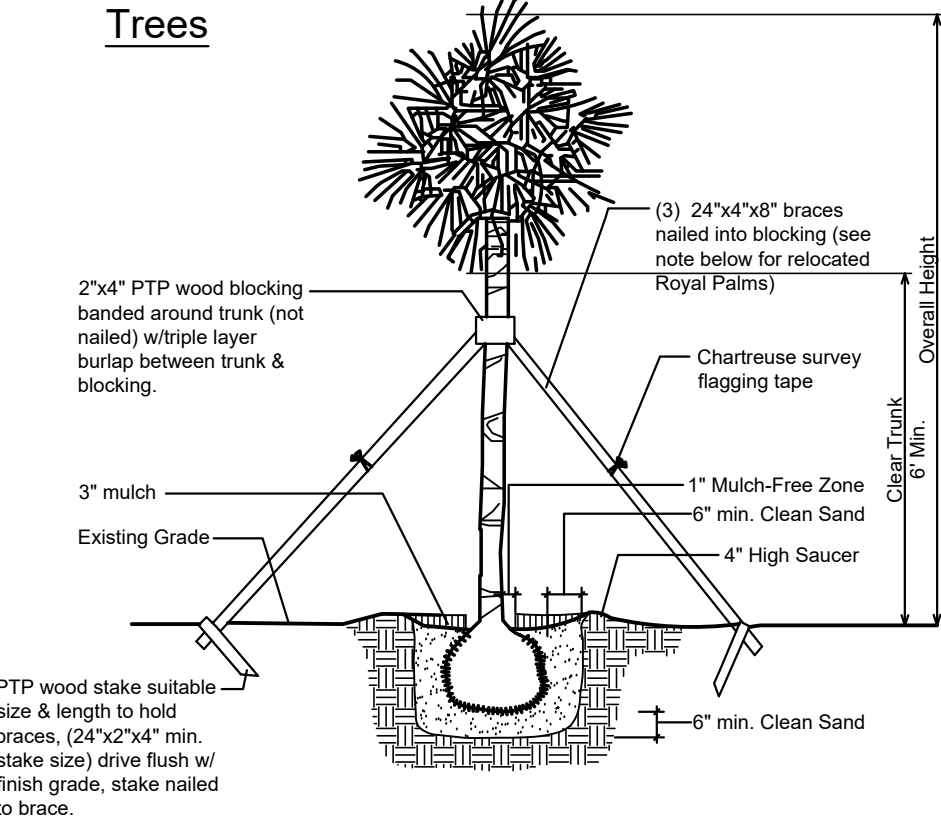
DRAWN	SKP
CHECKED	
D.H.C.	
DATE	12.09.19
SCALE	1" = 10'-0"
JOB NO.	102219
SHEET	
L-3	
OF	5 SHEETS

1
2
3
4

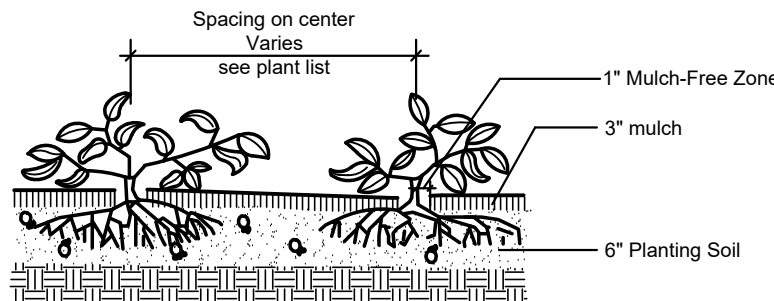


NOTE: Stake all trees up to 2' cal. @ 2 per tree. Guy all trees larger than 2' cal. Pull burlap from top of root ball. Remove all non-biodegradable materials such as wire, twine, etc. on rootball

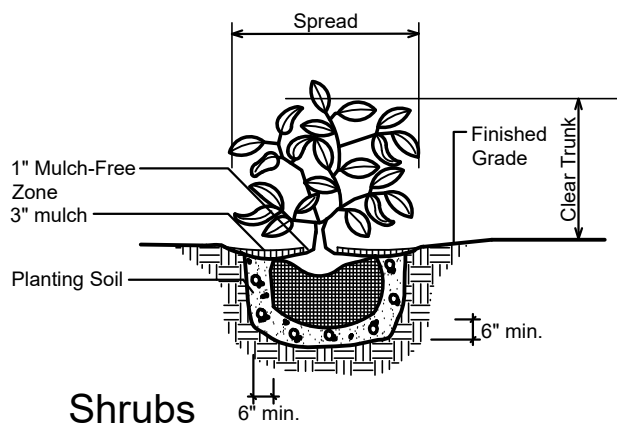
Trees



Straight Trunk Palms



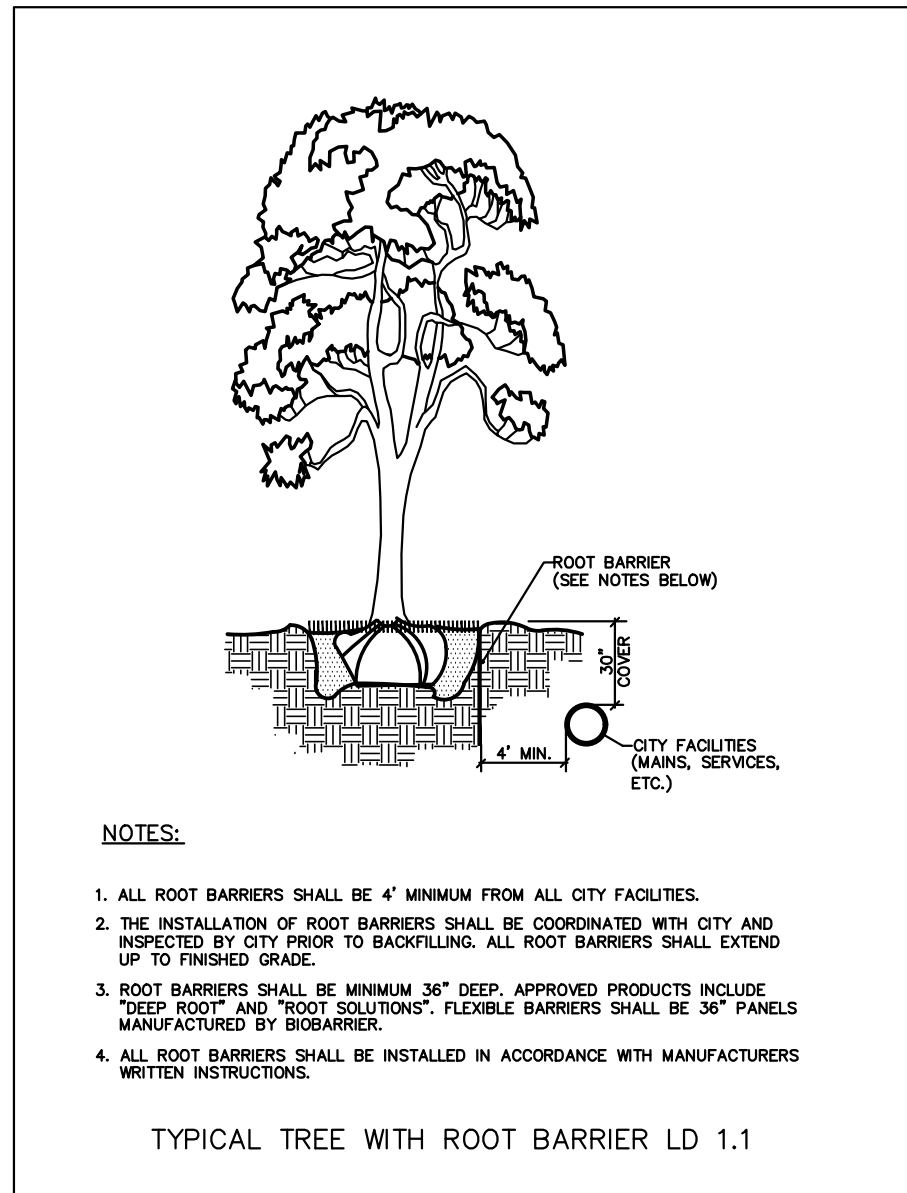
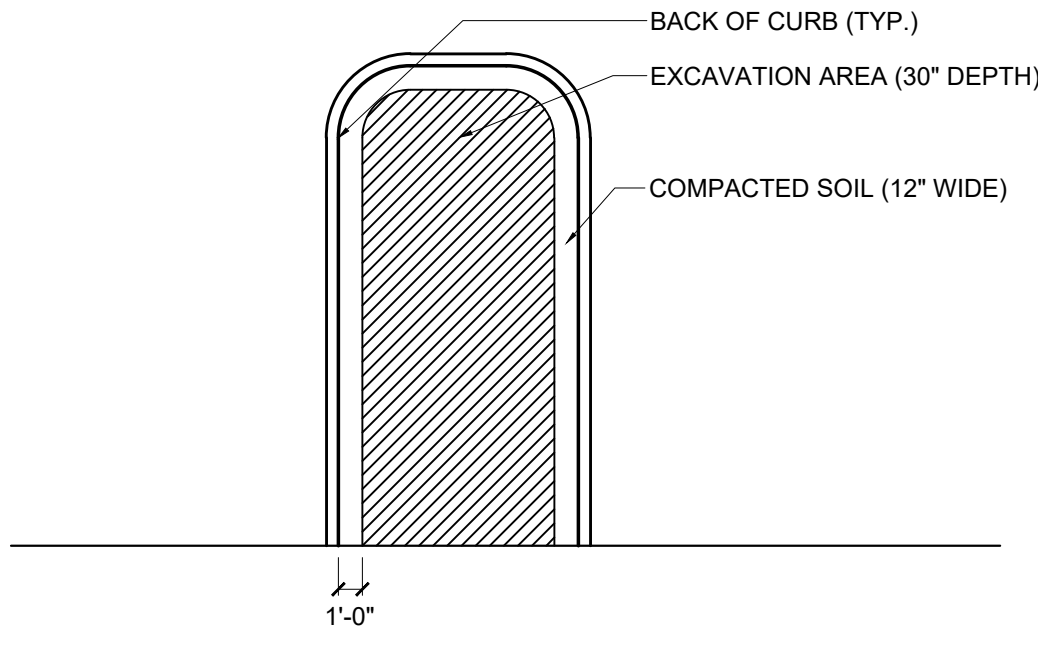
Groundcovers



Shrubs

NOTE:
Existing native soil within all landscape inslands, interior landscape strips and perimeter landscape strips, adjacent to vehicular use areas, shall be excavated down to a depth of thirty (30) inches below existing grade, except for a 12" buffer from the inside of curb or pavement (see detail). A suitable planting soil mixture of fifty/fifty (50/50), sixty/forty (60/40) (sand / planting soil) shall eith be backfilled in place of the native soil or efficiently mixed with the native soil create an optimum environment for successful root development. If native soil is to be mixed, it shall first be screened to remove rocks and debris larger than one-half (1/2) inch in diameter prior to mixing. All properties under this section shall be required to have an open landscape bed inspection prior to backfilling to insure the thirty (30) inch depth has been met.

Vehicular Use Landscape Strip Excavation Detail

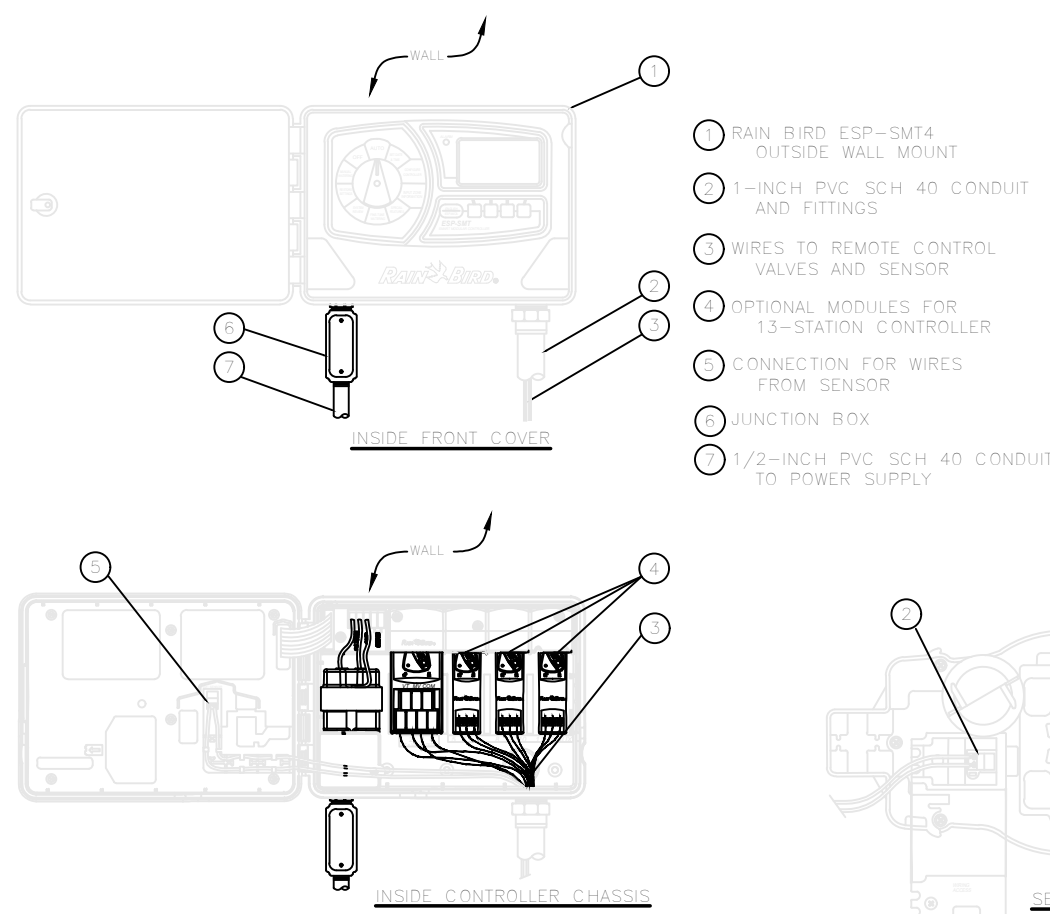


NOTES:

1. ALL ROOT BARRIERS SHALL BE 4" MINIMUM FROM ALL CITY FACILITIES.
2. THE INSTALLATION OF ROOT BARRIERS SHALL BE COORDINATED WITH CITY AND INSPECTED BY CITY PRIOR TO BACKFILLING. ALL ROOT BARRIERS SHALL EXTEND UP TO FINISHED GRADE.
3. ROOT BARRIERS SHALL BE MINIMUM 3/4" DEEP. APPROVED PRODUCTS INCLUDE "DEEP ROOT" AND "ROOT SOLUTION". FLEXIBLE BARRIERS SHALL BE 3/4" PANELS MANUFACTURED BY BIOBARRIER.
4. ALL ROOT BARRIERS SHALL BE INSTALLED IN ACCORDANCE WITH MANUFACTURERS WRITTEN INSTRUCTIONS.

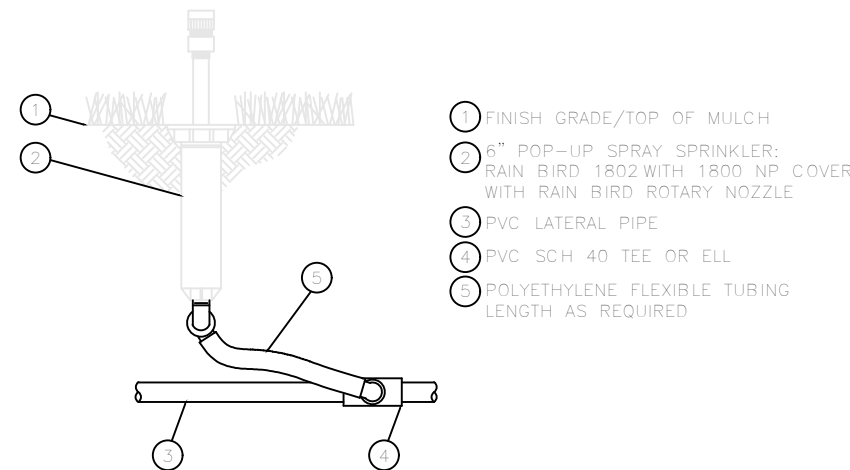
TYPICAL TREE WITH ROOT BARRIER LD 1.1

Any Trees or shrubs placed within water, sewer or drainage easements shall conform to Details L.D. 1.1 requirements.
RB: Denotes Root Barrier



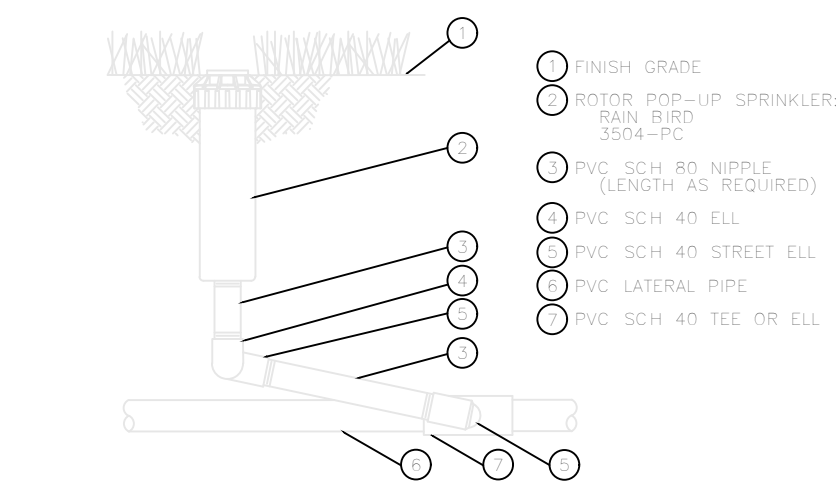
1 ESP-SMT SMART CONTROL SYSTEM

N.T.S.



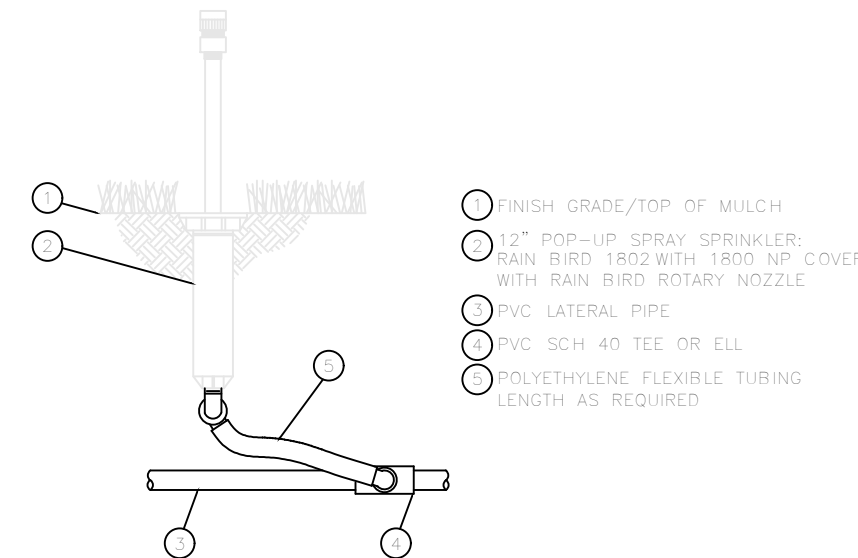
3 6" POP-UP SPRAY FLEX ASSEMBLY

N.T.S.



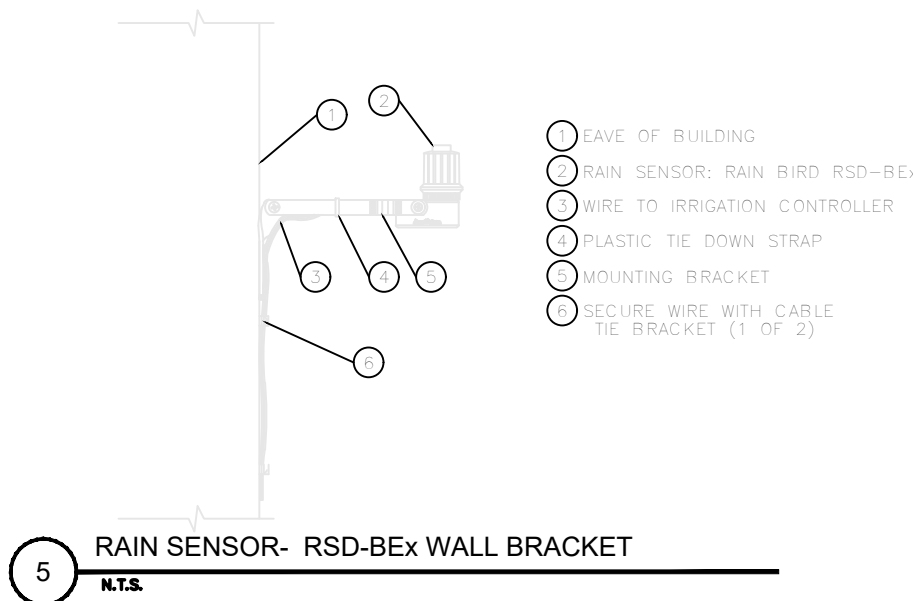
2 (OPTIONAL) ROTOR POP-UP SPRINKLER

N.T.S.



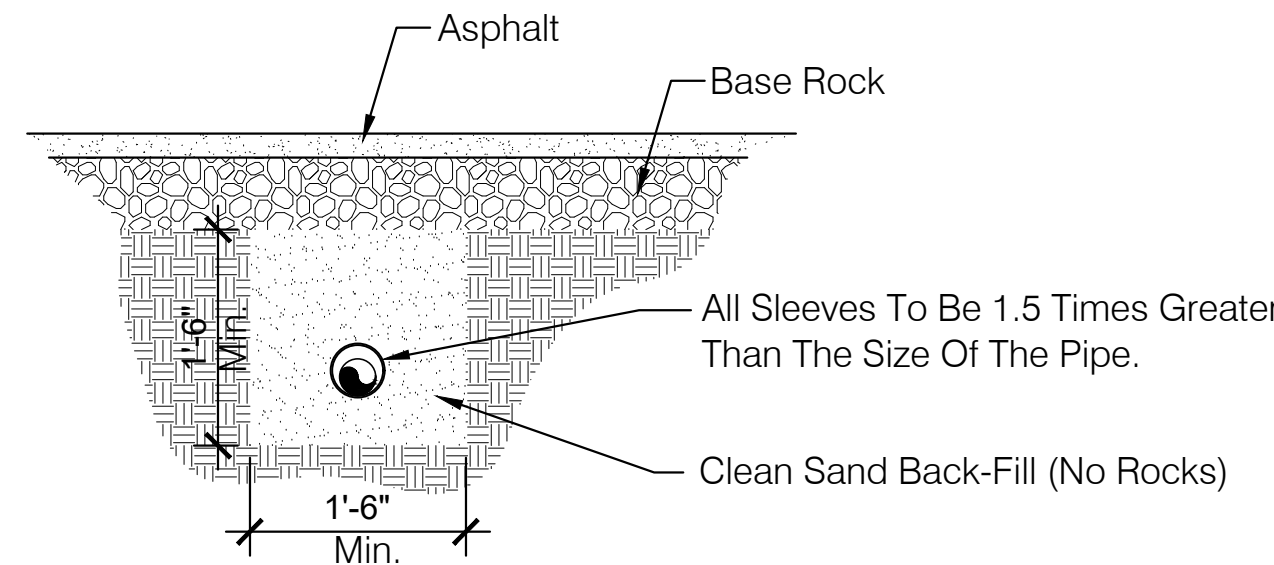
4 12" POP-UP SPRAY FLEX ASSEMBLY

N.T.S.



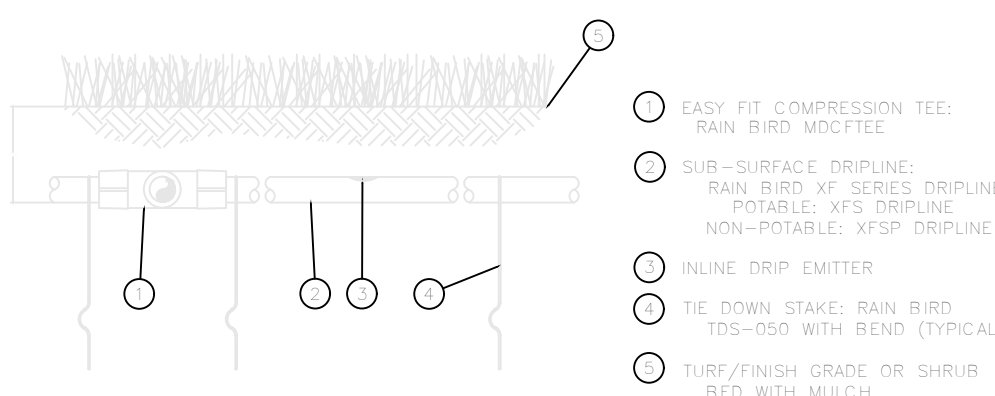
5 RAIN SENSOR- RSD-BEX WALL BRACKET

N.T.S.



6 TYPICAL SLEEVE DETAIL

N.T.S.

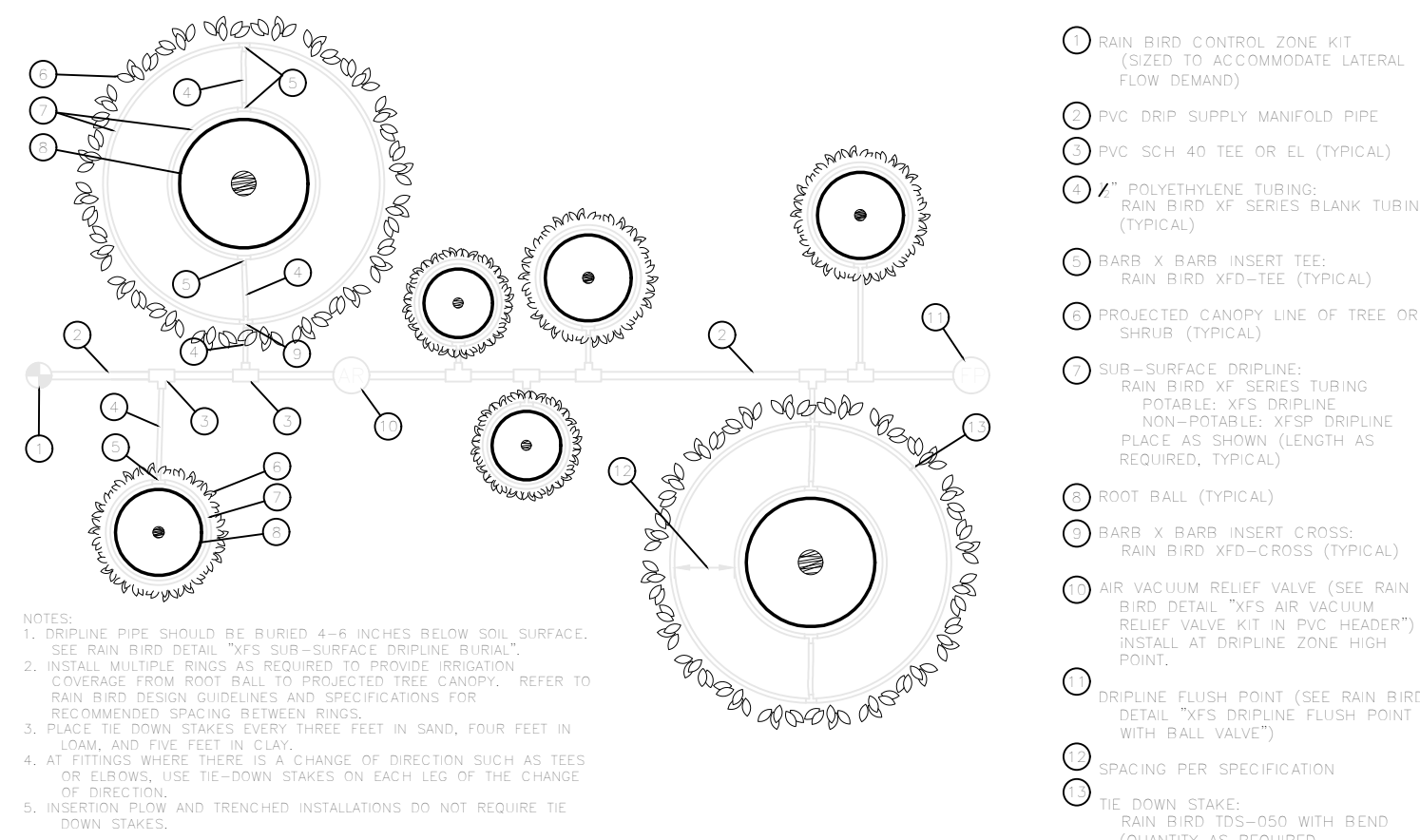


NOTES:

1. PLACE TIE DOWN STAKES EVERY THREE FEET IN SAND, FOUR FEET IN LOAM, AND FIVE FEET IN CLAY.
2. AT FITTINGS WHERE THERE IS A CHANGE OF DIRECTION, SUCH AS TEES OR ELBOWS, USE TIE-DOWN STAKES ON EACH LEG OF THE CHANGE OF DIRECTION.
3. INSERTION FLOW AND TRENCHED INSTALLATIONS DO NOT REQUIRE TIE-DOWN STAKES.

7 SUB-SURFACE DRIPLINE BURIAL

N.T.S.



NOTES:

1. DRIPLINE PIPE SHOULD BE BURIED 4-8 INCHES BELOW SOIL SURFACE. (SEE RAIN BIRD DETAIL "TDS SUB-SURFACE DRIPLINE BURIAL").
2. INSTALL MULTIPLE BARRS AS REQUIRED TO PROVIDE PROPER COVERAGE FROM ROOT BALL TO PROJECTED TREE CANOPY. REFER TO RAIN BIRD DETAIL "TDS AIR VACUUM RELIEF VALVE KIT IN PVC HEADERT" DETAIL AT DRIPLINE ZONE, HIGH POINT.
3. PLACE TIE DOWN STAKES EVERY THREE FEET IN SAND, FOUR FEET IN LOAM, AND FIVE FEET IN CLAY.
4. AT FITTINGS WHERE THERE IS A CHANGE OF DIRECTION SUCH AS TEES OR ELBOWS, USE TIE-DOWN STAKES ON EACH LEG OF THE CHANGE OF DIRECTION.
5. INSERTION FLOW AND TRENCHED INSTALLATIONS DO NOT REQUIRE TIE-DOWN STAKES.

8 SUB-SURFACE DRIPLINE MULTIPLE TREE/SHRUB DETAIL

N.T.S.

IRRIGATION LEGEND

- Toro 570 Series Flood Bubbler
- Rainbird 1/2 Circle Micro Bubbler on a Stake
- Rainbird 6 & 12 Pop-up 1800 Series w/PCP pattern as shown
- Rainbird PVB Series Valve
- Rainbird Controller ESP Series/ Mini Click Rain Sensor

NOTE: Main Line (Typ.) & valve locations are shown for graphic clarity only.
All Main Line (Typ.)s & valves are to be located within landscape area's on-site.

IRRIGATION NOTES:

Notes:
Automatic Irrigation System
Water demand/ zone
Pressure required (refer to plan)

GENERAL

System shall be installed in accordance with a Federal, State, and local codes, Contract drawings and Contract Specifications.
Irrigation design is based on "Planting Plan" dated 12.09.19
Contractor shall refer to this plan to coordinate sprinkler locations and pipe routing with plant locations.

The water source for this system shall be the well & pump, capable of producing 50 gpm.
The master shut-off valve shall be activated via the automatic controller, and shall be used to depressurize the zone lines when the system is not operational.

Contractor shall adjust the irrigation, where noted on the plans for actual field conditions, and shall install the system in accordance with South Florida Irrigation Society Standards and specifications.

To insure proper operation of this system, pump size, pressure required, pipe and wire sizes, sprinkler spacing, installation details, and specifications shall be followed as shown on the drawings and in the specifications.

Irrigation system shall provide 100% coverage, with a 50% overlap minimum, utilizing "rust-free" water source. If a well & pump system is to utilized, the contractor shall provide a "chemical injection system" to inhibit rust stains, if water sample testing indicates that there will be "rust" staining from the well water.

PIPING

Pipe routing is schematic only, and shall be field adjusted for on-site conditions.
All pipe shall be installed in accordance with local codes, and per manufactures recommendations.
Pipe routed under paver surfaces, and through planting walls shall be sleeved in SCH 40 PVC.
Sleeves shall be of adequate size to allow for 1/2" clearance for pipe & wire. Contractor shall verify the location, depth & size of all existing sleeves, as required.
Pipe installed above grade for the backflow preventer shall be SCH 40 Galvanized pipe. All other piping shall be PVC. The Main Line (Typ.) shall be SCH 40 PVC, laterals sized from 1" to 2" shall be SDR 26, Class 160, and laterals sized from 1" to 3/4" shall be SDR 21, Class 200 PVC pipe.
Backfill material shall be suitable material, free of rocks, stones, or other debris that could damage components of the irrigation system.

SPRINKLERS

Sprinkler locations are schematic only, and shall be adjusted for wind, landscape materials, hardscape elements, etc. to provide 100% coverage with no overthrow onto paved surfaces, or building facades.
Pop-up spray heads shall be Rainbird series 6" and 12" type, which are to be installed on flexible swing joints of thick-walled poly pipe with 1/2" insert elbows.

THERE SHALL BE NO 4" POP-UP HEADS UTILIZED FOR THE PROJECT.

Shrub heads shall be installed at a uniform height of 6" above the plantings, and are to be located within planting masses so as to be concealed from view.
Shrub type spray heads shall be Toro 570 series, and are to be installed on a 1/2" SCH 40 PVC risers.
Bubblers are to be installed on a SCH 40 PVC risers at the base of the plant material, for low-level watering.
All SCH 40 PVC risers are to be painted "Forest green", or Brown, to be less conspicuous.
Rainbird 12" pop-up sprinklers shall be installed in ground-cover areas at the parking-lot islands, and at other critical locations, as determined in the field by the Landscape Architect.

Sprinklers located adjacent to pavement, sidewalks, decks, patios, buildings, etc. shall be installed 8" from the edge. Unless other-wise noted on the plans, pop-up sprinklers shall be installed 6" from the edge, and shrub sprinklers shall be installed 18" from the edge. Shrub risers are not to be installed at walk-way intersections, or where-ever a "trip & fall" hazard may occur.

Adjustment feature of sprinklers specified shall be utilized to insure proper coverage, while minimizing undesirable overthrow.
Contractor shall use precaution in locating, and setting sprinkler heads in planting areas adjacent to parking spaces to minimize the damage to sprinklers be overhanging car bumpers.

Pop-up sprinklers with 'low angle' nozzles shall be installed amid masses of fall shrubs, for low level watering. Contractor shall install sprinklers at optimum locations for the most effective coverage.

CONTROL SYSTEM

Rainbird control system shall be installed, per manufactures recommendations, to activate in-line valves, and the master shut-off valve.
Proper grounding equipment shall be installed, for the controller.
Controller location shall be approved by the Landscape Architect, and project supervisor.

The Irrigation contractor shall supply the controller, however the physical installation there-of, and the electrical hook-up shall be by others.

VALVES

IRRITROL, or approved equal, electric valves shall be installed per manufactures recommendations, and as per details. All valves are to be installed in a 10" Ametex valve box, see details.

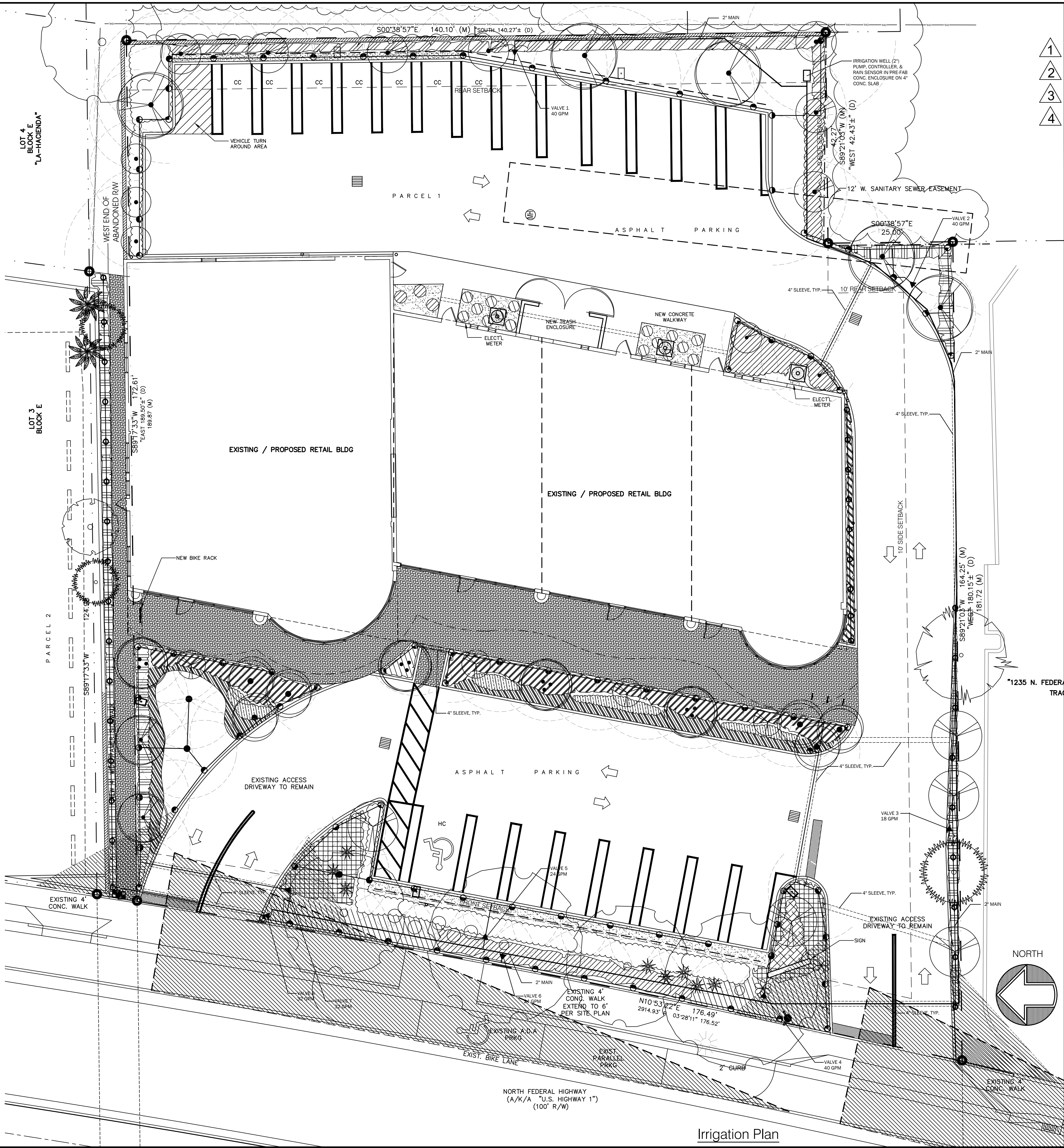
RAIN SENSOR

Mini-click" rain sensor shall be installed, per manufactures recommendations. Rain sensor location shall be approved by the Landscape Architect.

Automatic Irrigation system to provide 100% irrigation coverage, with 100% overlap minimum, with a programmable controller and rain sensor. Shrub & Turf zones are to be separated. Water source to be existing meter.
THERE SHALL BE NO TREES OR SHRUBS PLACED WITHIN WATER, SEWER OR DRAINAGE EASEMENTS

IRRIGATION PLAN NOTES:

- Contractor to field verify location and size of existing water meter.
- Contractor shall prepare all irrigation in this area to provide 100% coverage with a 50% overlap (min.).



- 1
- 2
- 3
- 4

REVISIONS	BY
2/3/20 Revised per Arch'l Site Plan	TE
6/26/20 Revised per Arch'l Site Plan	TE
7/26/20 Revised per Review Comments	TE
9/30/20 Rev per City Cmnts & Rev'd Site Plan	TE

DESIGNED BY:
CARTER & ASSOCIATES
LANDSCAPE ARCHITECTS INC.
74 N.E. 5th AVE. Delray Beach, FL 33483
LA. 831
561-272-9621

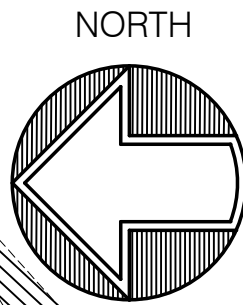
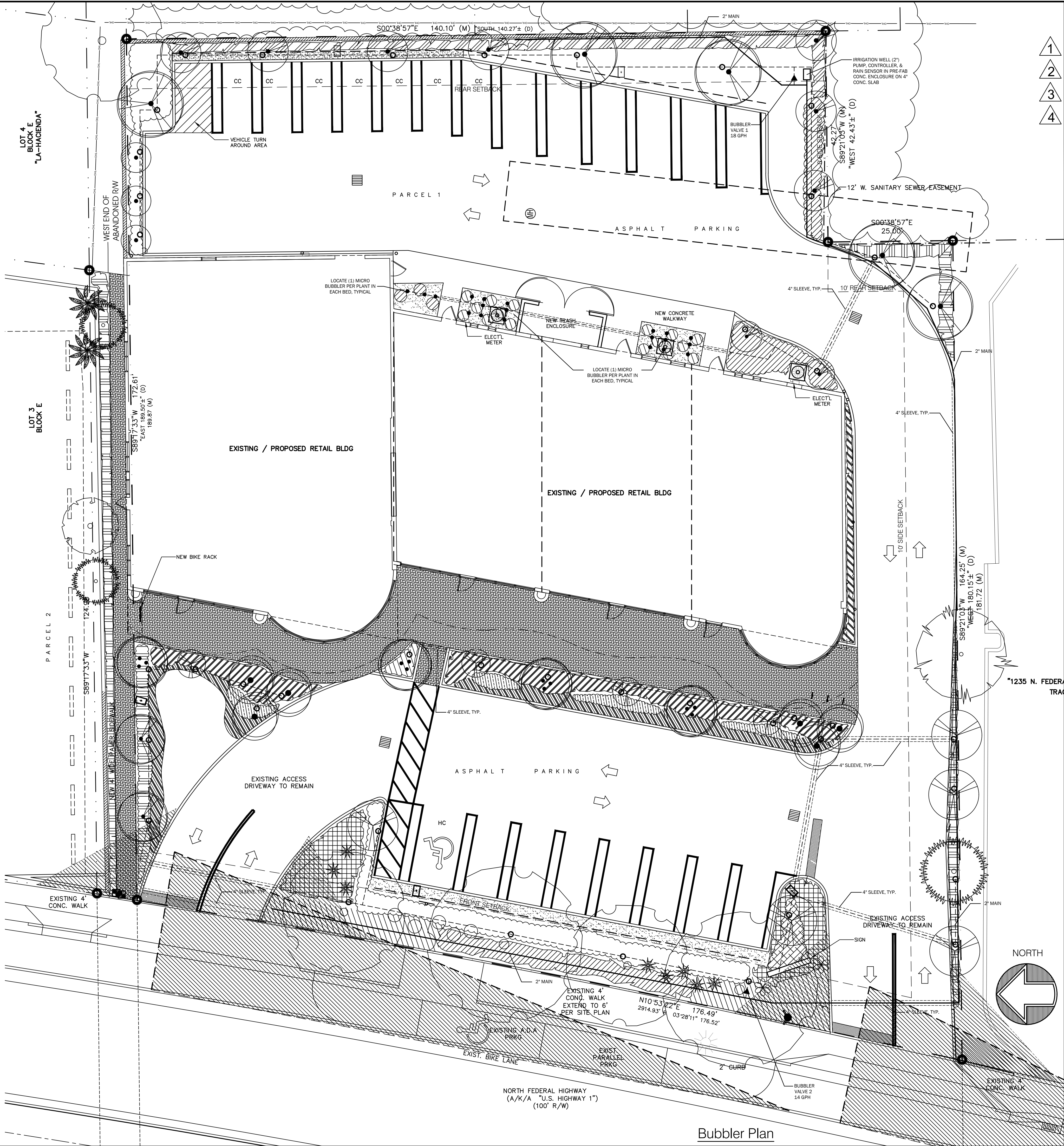
Landscape for:
Delray Park Plaza
1311-1319 N. Federal Hwy.
Delray Beach, Florida

DRAWN	SKP
CHECKED	D.H.C.
DATE	12.09.19
SCALE	1" = 10'-0"
JOB NO.	102219
SHEET	L-4
OF	5
SHEETS	

Automatic Irrigation system to provide 100% irrigation coverage, with 100% overlap minimum, with a programmable controller and rain sensor. Shrub & Turf zones are to be separated. Water source to be existing meter.
THERE SHALL BE NO TREES OR SHRUBS PLACED WITHIN WATER, SEWER OR DRAINAGE EASEMENTS

IRRIGATION PLAN NOTES:

1. Contractor to field verify location and size of existing water meter.
2. Contractor shall prepare all irrigation in this area to provide 100% coverage with a 50% overlap (min.).
3. Bubblers to be placed at all new and existing trees and palms, and where indicated with specific materials



- 1
- 2
- 3
- 4

REVISIONS	BY
2/3/20 Revised per Arch'l Site Plan	TE
6/26/20 Revised per Arch'l Site Plan	TE
7/26/20 Revised per Review Comments	TE
9/30/20 Rev per City Cmnts & Rev'd Site Plan	TE

DESIGNED BY:
CARTER & ASSOCIATES
LANDSCAPE ARCHITECTS INC.
74 N.E. 5th AVE. Delray Beach, FL 33483
LA. 831
561-272-9621

Landscape for:
Delray Park Plaza
1311-1319 N. Federal Hwy.
Delray Beach, Florida

DRAWN SKP
CHECKED D.H.C.
DATE 12.09.19
SCALE 1" = 10'-0"
JOB NO. 102219
SHEET L-5 5 OF 5 SHEETS