

THIS ITEM HAS BEEN DIGITALLY SIGNED AND SEALED BY EREZ BAR-NUR, REGISTERED LANDSCAPE ARCHITECT, STATE OF FLORIDA, LICENSE NO. 6666879.

PRINTED COPIES OF THIS DOCUMENT ARE NOT CONSIDERED SIGNED AND SEALED AND THE SIGNATURE MUST BE VERIFIED ON ANY ELECTRONIC COPIES.

Erez Bar-Nur

Digitally signed by Erez Bar-Nur
Date: 2020.09.01 18:49:03 -04'00'

LANDSCAPE
DESIGN
WORKSHOP

• Planning •
Landscape Architecture

301 Yamato Rd., Suite 1240
Boca Raton, FL 33431
Broward 954-772-0724
Palm Beach 561-212-0271

LDW @
LandscapeDesignWorkshop.com

TRG
TRINISIC
RESIDENTIAL GROUP
ELEVATING VALUE IN THE MULTIFAMILY REAL ESTATE

AURA DELRAY BEACH
City of Delray Beach, Florida
OVERALL SITE PLAN

SEPTEMBER 2, 2020
JULY 29, 2020
REVISED
DATE
JUNE 23, 2020
MF
DRAWN BY
EB
APPROVED BY

This drawing is the property of Landscape Design Workshop, and is an instrument of service not to be reproduced in whole or in part without the express written permission of name.

L-1

THIS ITEM HAS BEEN DIGITALLY SIGNED AND SEALED
BY EREZ BAR-NUR, REGISTERED LANDSCAPE
ARCHITECT, STATE OF FLORIDA, LICENSE NO. 6666879.

PRINTED COPIES OF THIS DOCUMENT ARE NOT
CONSIDERED SIGNED AND SEALED AND THE SIGNATURE
MUST BE VERIFIED ON ANY ELECTRONIC COPIES.

LANDSCAPE TABULATION

INTERIOR GREEN SPACE

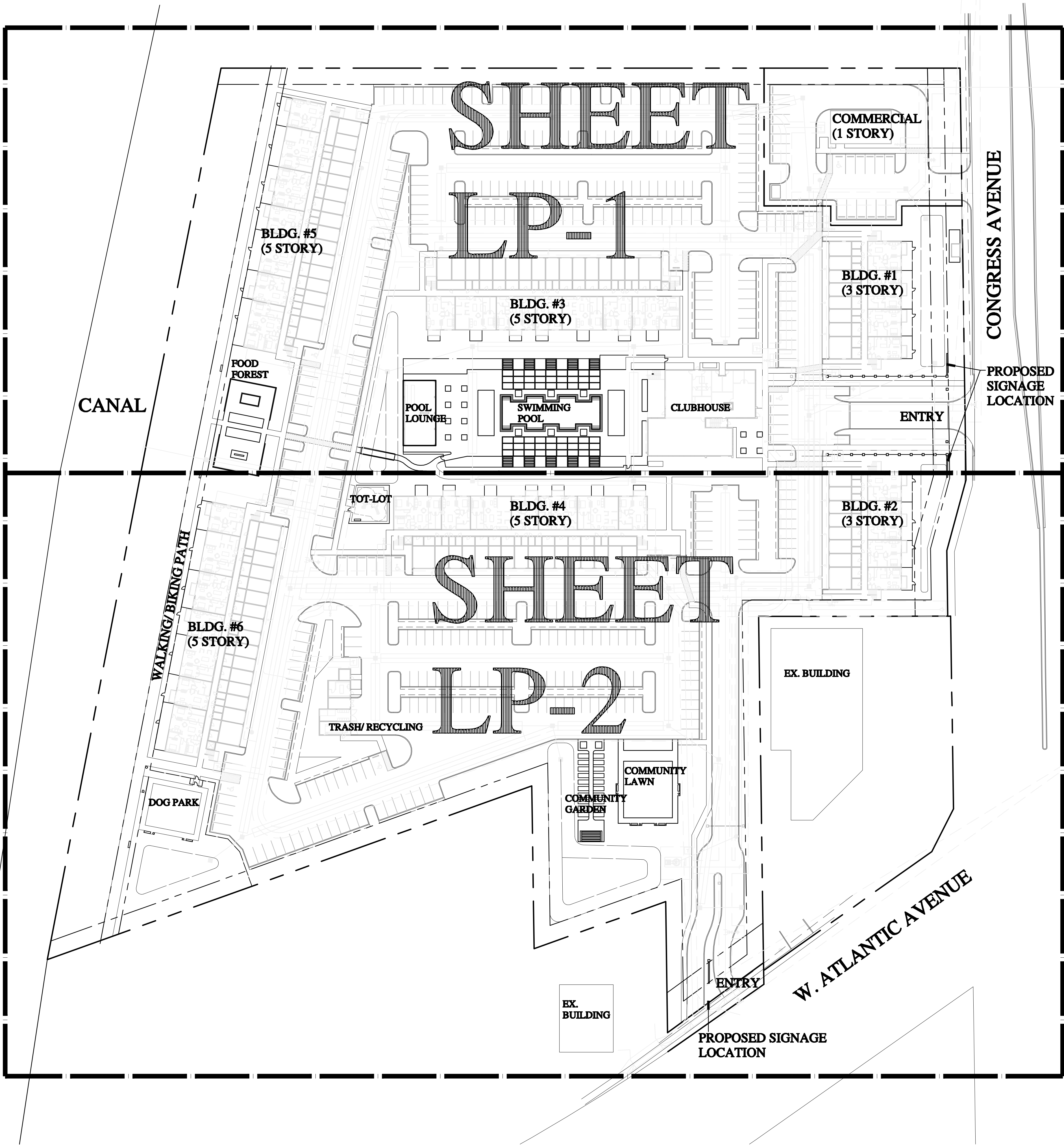
A.	Total paved area	177,683	sq. ft.
B.	Required interior green space	17,768	sq. ft. (10% of total paved area)
C.	Interior green space provided	17,768	sq. ft.
D.	Total number of trees required	143	Trees (1 tree / 125 sq. ft. of req. green space)
E.	Number of interior trees provided	293	Trees

PERIMETER GREEN SPACE

F.	Perimeter green space required	37,080	sq. ft. (depth of buffers x length; 2,472 x 15)
G.	Perimeter green space provided	37,080	sq. ft.
H.	Number of perimeter trees required	83	Trees (1 tree per 30 lineal feet; 2,472 / 30).
I.	Number of perimeter trees provided	160	Trees

XERISCAPE CALCULATIONS

J.	Required shrubs and ground covers	60,231	sq. ft. (30% of pervious area)
K.	Shrubs and ground cover provided	60,231	sq. ft.
L.	Required native plant materials	15,058	sq. ft. (25% of required shrubs & ground cover area)
M.	Native plant materials provided	15,058	sq. ft.
N.	Number of native trees required	113	Trees (50% of required trees, see D & H)
O.	Native trees provided	218	Trees



LANDSCAPE
DESIGN
WORKSHOP

• Planning •
Landscape Architecture

301 Yamato Rd., Suite 1240
Boca Raton, FL 33431
Broward 954-772-0724
Palm Beach 561-212-0271

LDW @
LandscapeDesignWorkshop.com

TRG
TRINISIC
RESIDENTIAL GROUP
ELEVATING VALUE IN MULTIFAMILY REAL ESTATE

AURA DELRAY BEACH
City of Delray Beach, Florida
OVERALL SITE PLAN

SEPTEMBER 2, 2020
JULY 29, 2020

REVISED
DATE
JUNE 23, 2020

DATE
MF

DRAWN BY
EB

APPROVED BY

This drawing is the property of Landscape
Design Workshop, and is an instrument
of service not to be reproduced in whole
or in part without the express written per-
mission of name.

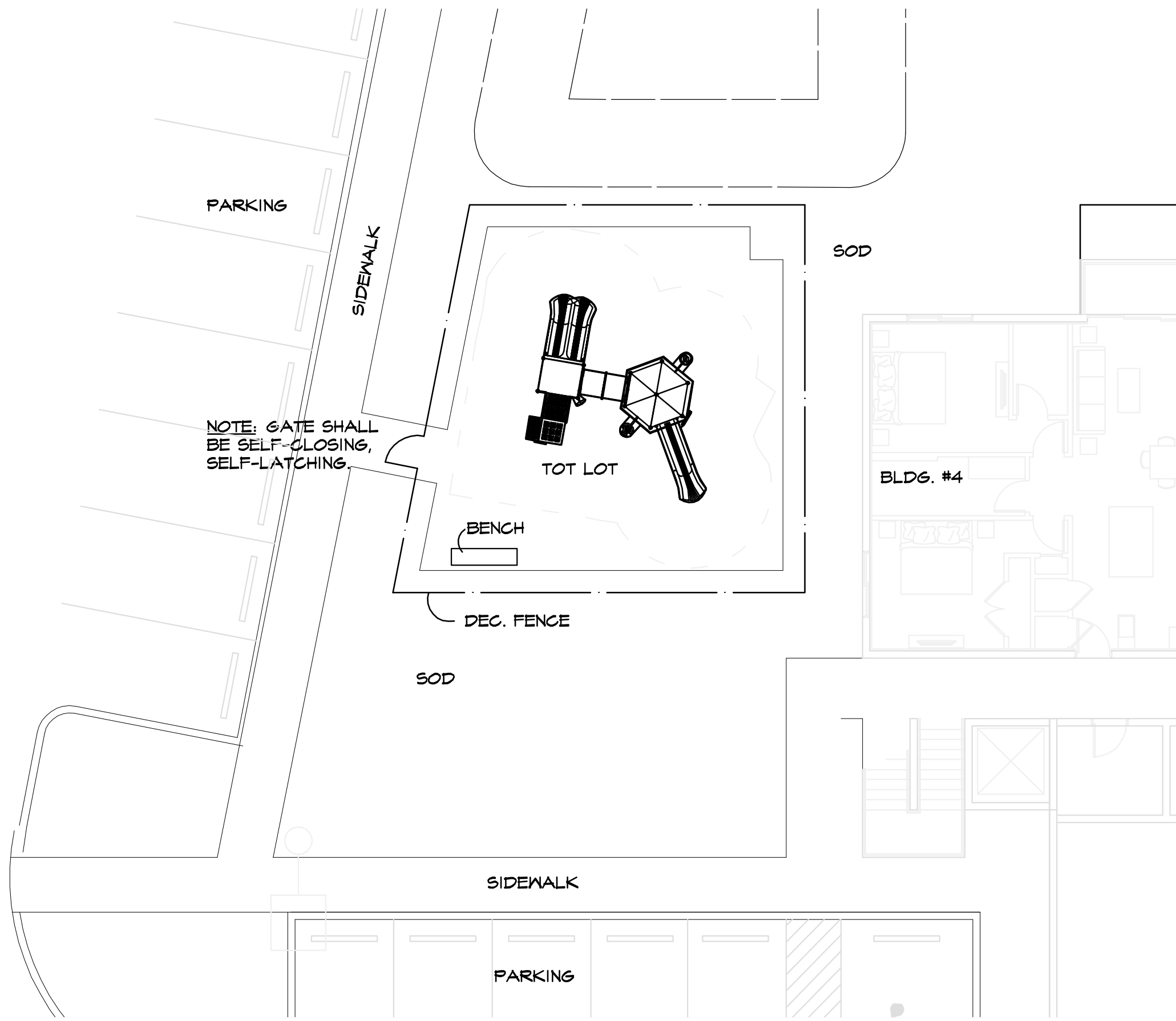
L-1

COPYRIGHT © 2020 LANDSCAPE DESIGN WORKSHOP. ALL RIGHTS RESERVED

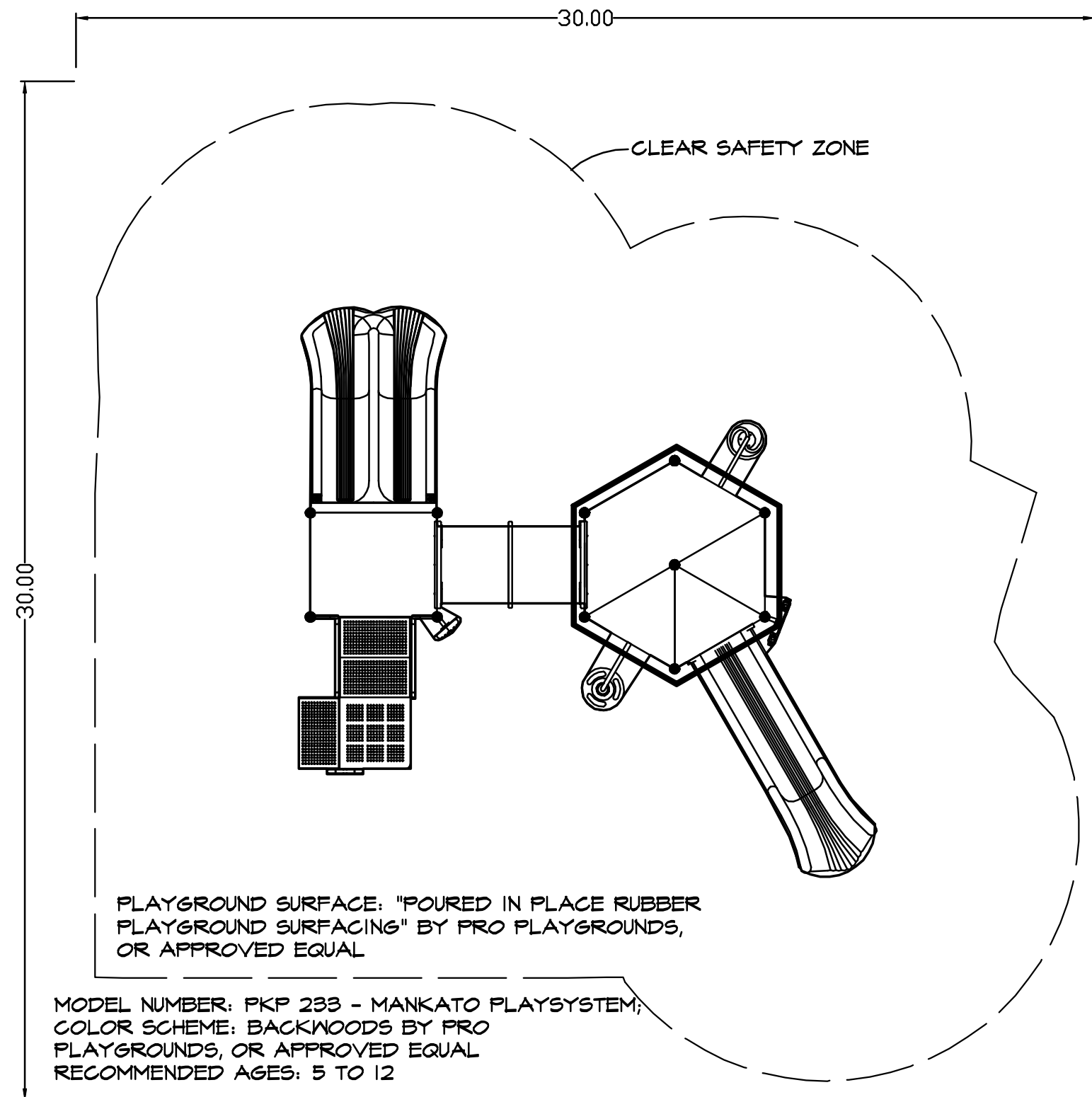
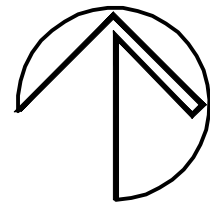
BASE INFORMATION TAKEN FROM RICHARD JONES ARCHITECTURE

THIS ITEM HAS BEEN DIGITALLY SIGNED AND SEALED
BY EREZ BAR-NUR, REGISTERED LANDSCAPE
ARCHITECT, STATE OF FLORIDA, LICENSE NO. 6666879.

PRINTED COPIES OF THIS DOCUMENT ARE NOT
CONSIDERED SIGNED AND SEALED AND THE SIGNATURE
MUST BE VERIFIED ON ANY ELECTRONIC COPIES.



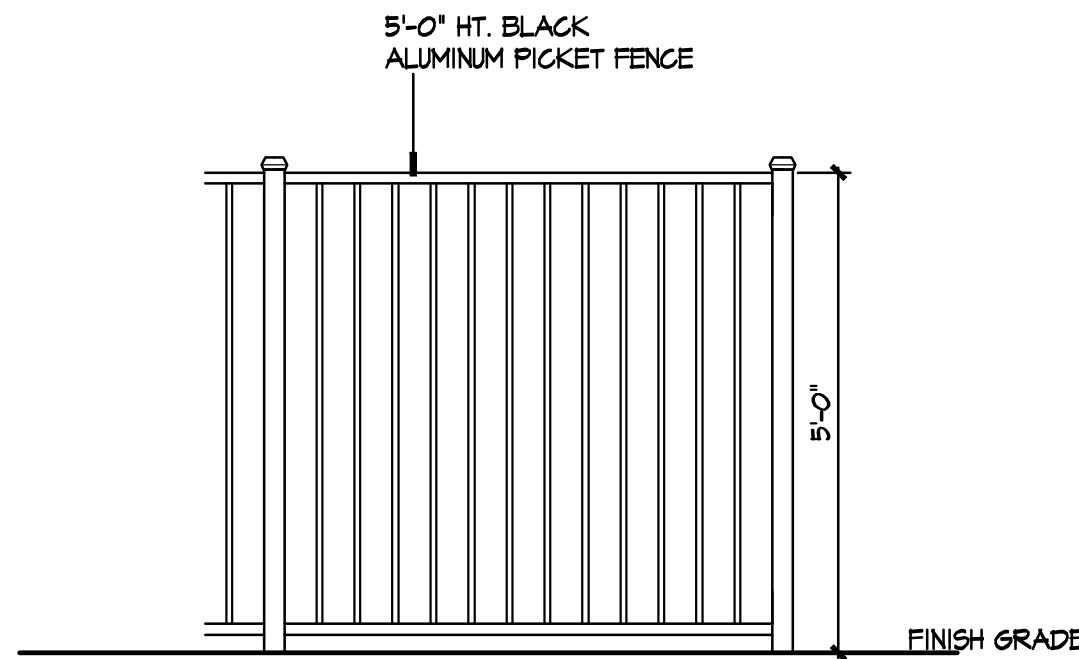
PLAYGROUND LAYOUT PLAN
SCALE: 1"=10'-0"



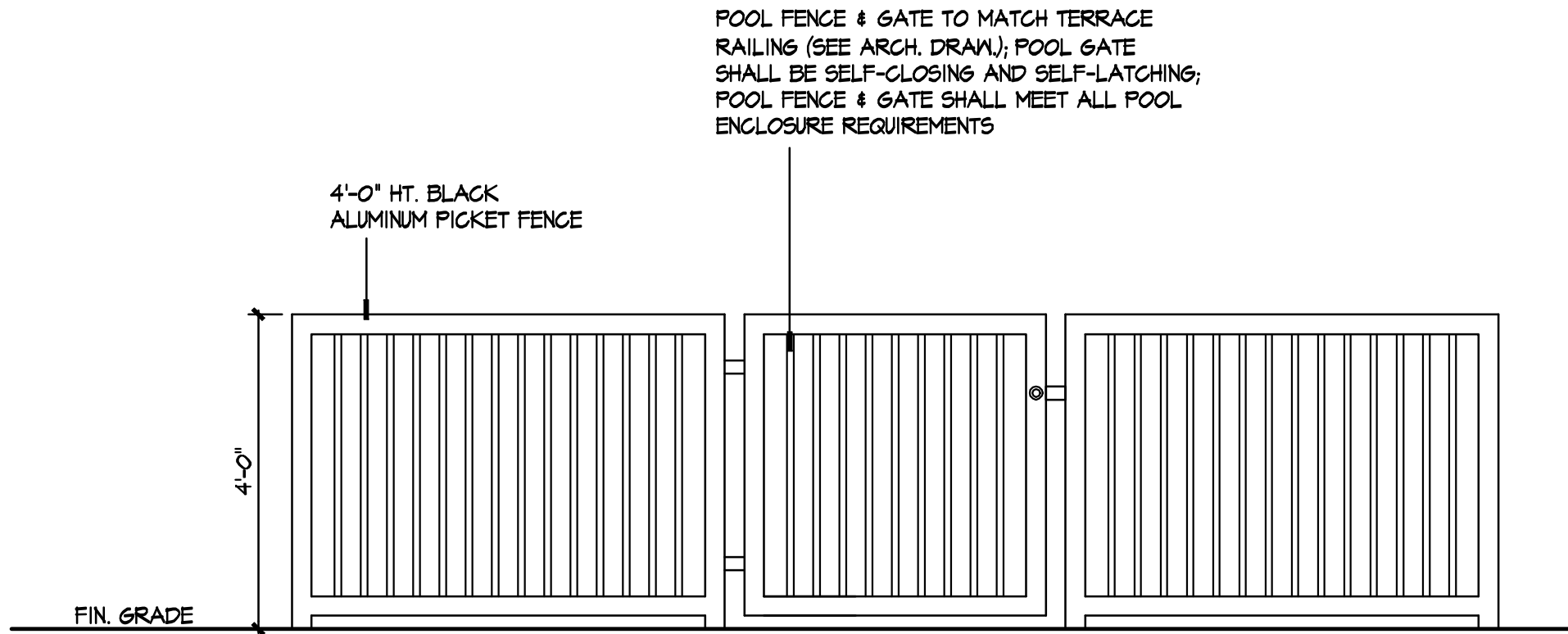
PLAYGROUND DETAIL
N.T.S.



PLAYGROUND IMAGE
N.T.S.



2 PERIMETER FENCE ELEVATION
LD-1 SCALE: 1/2"=1'-0"



3 POOL FENCE & GATE FRONT ELEVATION
LD-1 SCALE: 1/2"=1'-0"

COPYRIGHT © 2020 LANDSCAPE DESIGN WORKSHOP. ALL RIGHTS RESERVED

LANDSCAPE
DESIGN
WORKSHOP

• Planning •
Landscape Architecture

301 Yamato Rd., Suite 1240
Boca Raton, FL 33431
Broward 954-772-0724
Palm Beach 561-212-0271

LDW @
LandscapeDesignWorkshop.com

TRG
TRINISIC
RESIDENTIAL GROUP
BUILDING VALUE IN MULTIFAMILY REAL ESTATE

AURA DELRAY BEACH
City of Delray Beach, Florida
DETAILS

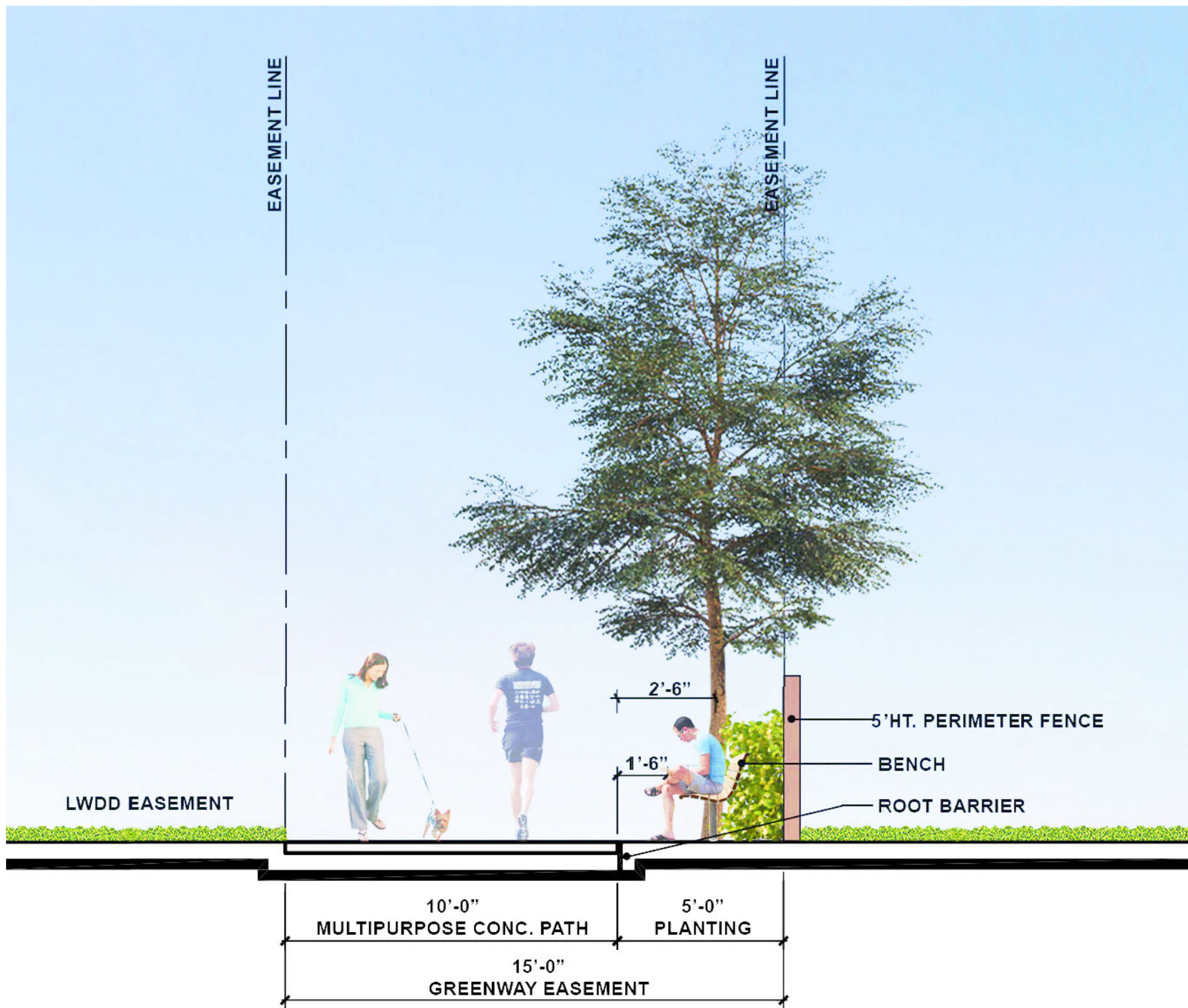
REVISED
JULY 29, 2020
DATE
MF
DRAWN BY
EB
APPROVED BY

This drawing is the property of Landscape Design Workshop, and is an instrument of service not to be reproduced in whole or in part without the express written permission of name.

LD-1

THIS ITEM HAS BEEN DIGITALLY SIGNED AND SEALED BY ERREZ BAR-NUR, REGISTERED LANDSCAPE ARCHITECT, STATE OF FLORIDA, LICENSE NO. 6666879.

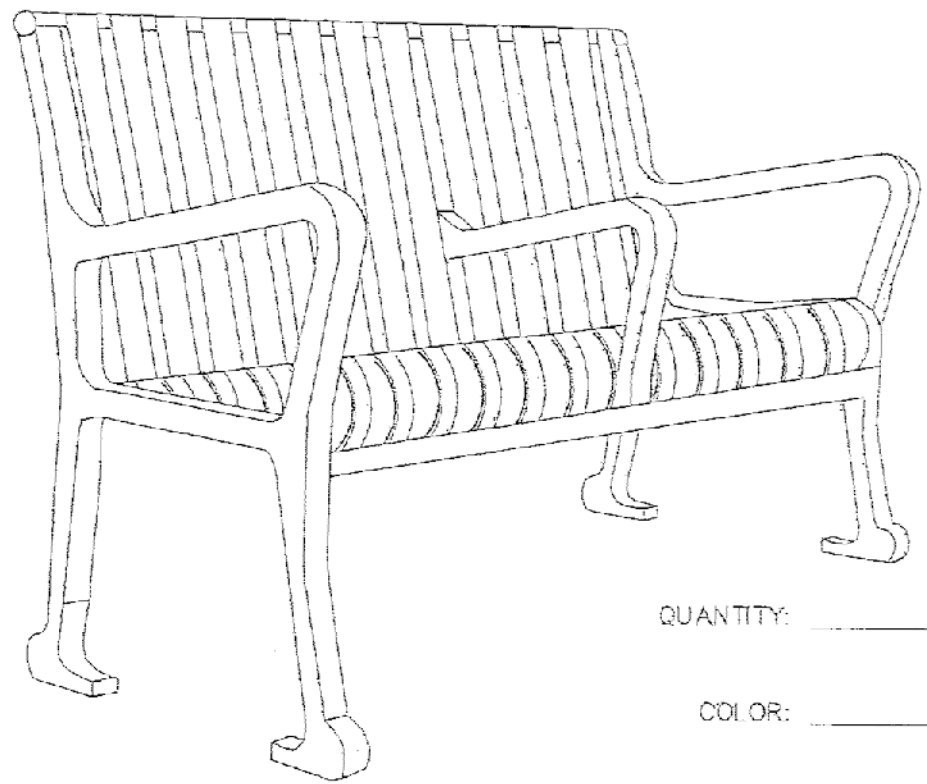
PRINTED COPIES OF THIS DOCUMENT ARE NOT CONSIDERED SIGNED AND SEALED AND THE SIGNATURE MUST BE VERIFIED ON ANY ELECTRONIC COPIES.



NOTES:
ALL TREES, FURNITURE, AND OTHER VERTICAL ELEMENTS SHALL BE MIN. 1'-6" FROM THE PATHWAY. ROOT BARRIERS SHALL BE INSTALLED TO PROTECT THE PATHWAY FROM DAMAGE.

ALL FURNITURE IN THE EASEMENT DEDICATION FOR THE SHARED-USE PATH SHALL UTILIZE CITY STANDARD DETAILS (SEE THIS SHEET FOR DETAILS).

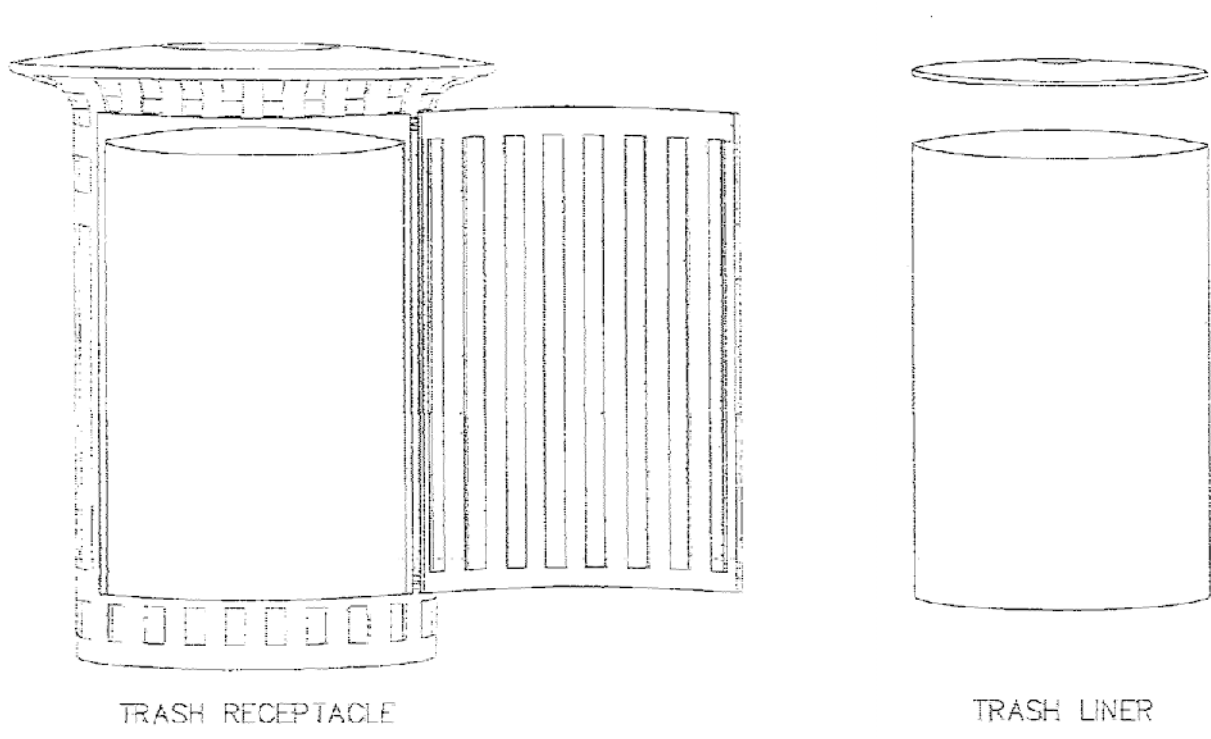
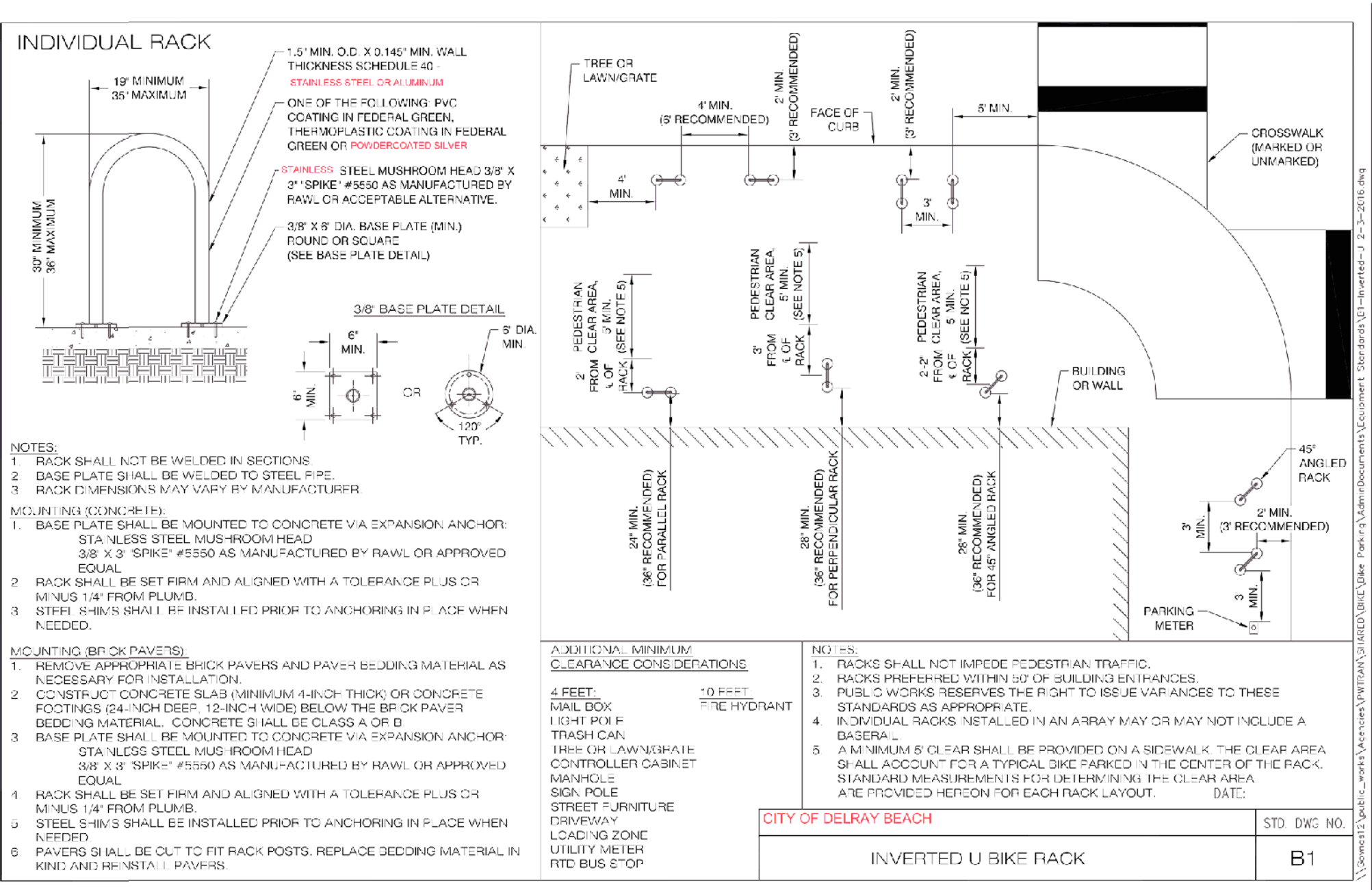
CITY GREENWAY EASEMENT SECTION
LD-2 SCALE: 1/4"=1'-0"



QUANTITY: _____
COLOR: _____
DELIVERY DATE: _____
SIGNATURE: _____

HEAVY DUTY COMMERCIAL BENCHES

MATERIAL: 1/4" 6061-T6 ALUMINUM ALLOY WITH 1-1/2" RIPS 318 ALLOY CAST ALUMINUM BENCH ENDS.
LENGTH: 6' WITH CENTRAL RAIL ARM
DIMENSIONS: OVERALL HEIGHT 32", SEAT HEIGHT 16-3/4" AND DEPTH 24".
MOUNTING: 3/8" ANCHORING HOLES IN FEET.
FINISHES: BAKED ON POLYESTER POWDER COLOR COAT WITH A SECOND SUN RESISTANCE BAKED ON CLEAR COAT FINISH.
WARRANTY: 10 YRS STRUCTURAL WARRANTY AND 5 YRS FINISH WARRANTY BASED ON NORMAL PUBLIC USE AND ATMOSPHERIC CONDITION



TRASH RECEPTACLE SPECIFICATIONS

MATERIAL: 1/4" 6061-T6 ALUMINUM ALLOY WITH 1-1/2" RIPS AND DOOR FOR LINER.
DIMENSIONS: 28" W x 35-1/2" H.T.
MOUNTING: 3/8" ANCHORING HOLES
FINISHES: BAKED ON POLYESTER POWDER COLOR COAT WITH A SECOND SUN RESISTANCE BAKED ON CLEAR COAT FINISH.
WARRANTY: 10 YRS STRUCTURAL WARRANTY AND 5 YRS FINISH WARRANTY BASED ON NORMAL PUBLIC USE AND ATMOSPHERIC CONDITION

DELRAY BEACH STANDARD DETAIL: BENCH

N.T.S.

DELRAY BEACH STANDARD DETAIL: BIKE RACK

N.T.S.

DELRAY BEACH STANDARD DETAIL: TRASH RECEPTACLE

N.T.S.

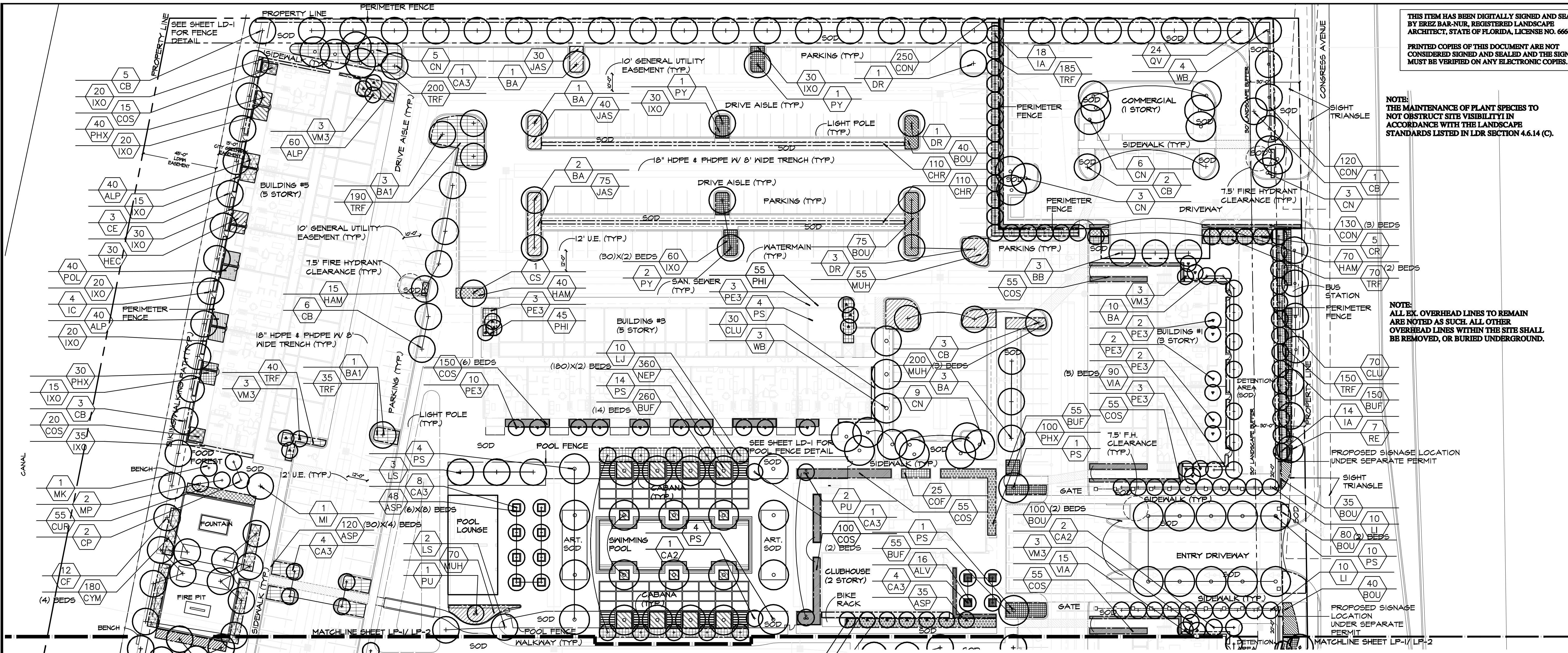
AURA DELRAY BEACH
City of Delray Beach, Florida
DETAILS

REVISED
SEPTEMBER 2, 2020
DATE
MF
DRAWN BY
EB
APPROVED BY

This drawing is the property of Landscape Design Workshop, and is an instrument of service not to be reproduced in whole or in part without the express written permission of same.

LD-2

COPYRIGHT © 2020 LANDSCAPE DESIGN WORKSHOP. ALL RIGHTS RESERVED



THIS ITEM HAS BEEN DIGITALLY SIGNED AND SEALED BY ERIC BAR-NUR, REGISTERED LANDSCAPE ARCHITECT, STATE OF FLORIDA, LICENSE NO. 6666879.

PRINTED COPIES OF THIS DOCUMENT ARE NOT CONSIDERED SIGNED AND SEALED AND THE SIGNATURE MUST BE VERIFIED ON ANY ELECTRONIC COPIES.

NOTE: THE MAINTENANCE OF PLANT SPECIES TO NOT OBSTRUCT SITE VISIBILITY IN ACCORDANCE WITH THE LANDSCAPE STANDARDS LISTED IN LDR SECTION 4.6.14 (C).

NOTE: ALL EX. OVERHEAD LINES TO REMAIN ARE NOTED AS SUCH. ALL OTHER OVERHEAD LINES WITHIN THE SITE SHALL BE REMOVED, OR BURIED UNDERGROUND.

Shrubs & Groundcover:			Botanical/Common Name	Height	Spread	Trunk	Remarks
Key	Qty.	Water Need					
ALP	140	Medium	Alpinia purpurata Red Ginger	24"	24"		Full, 24" o.c.
ALV	16	Medium	Alpinia z. 'Variegata' Variegated Shell Ginger	24"	24"		Full, 24" o.c.
ASP	203	Medium	Asparagus densiflorus 'Myers' Foxtail Fern	18"	18"		Full, 18" o.c.
BOU	370	Low	Bougainvillea 'Silhouette' Singapore Pink Bougainvillea	24"	24"		Color: Singapore Pink
BUF	520	Low	Bulbine Frutescens Desert Candles	18"	18"		Full, 18" o.c.
CHR*	220	Low	Chrysobalanus icaco Red-Tip* Red Tip Cocoplum	36"	24"		Full, 24" o.c.
CUR	55	Medium	Curcuma longa Turmeric	24"	24"		Full, 24" o.c.
CLU*	100	Low	Clusia rosea* Pitch Apple	36"	24"		Full, 24" o.c.
CON*	525	Low	Conocarpus erectus* Green Buttonwood	36"	24"		Full, 24" o.c.
COF	25	Medium	Cordyline fruticosa 'Black Magic' Hawaiian Ti Plant 'Black Magic'	24"	24"		Full, 24" o.c.
COS	505	Medium	Costus woodsonii 'Red Button' Red Button Ginger	36"	24"		Full, 24" o.c.
CYM	180	Medium	Cymbopogon citratus Lemongrass	24"	24"		Full, 24" o.c.
HAM*	165	Low	Hamelia patens 'Compacta'* Dwarf Fire Bush	24"	24"		Full, 24" o.c.
HEC	30	Medium	Heliconia psittacorum 'Lady Di' Parrot Beak Heliconia	24"	24"		Full, 24" o.c.
IXO	295	Medium	Ixora 'Maui' Maui Ixora	24"	24"		Full, 24" o.c.
JAS	145	Medium	Jasminum volubile Wax Leaf Jasmine	18"	18"		Full, 18" o.c.
MUH*	335	Low	Muhlenbergia capillaris* Muhly Grass	24"	24"		Full, 24" o.c.
NEP*	360	Medium	Nephrolepis exaltata 'Bostoniensis'* Boston Fern	24"	24"		Full, 24" o.c.
PAN	60	Low	Pandanus baptistii 'Aureus' Variegated Dwarf Pandanus	36"	36"		Full, Spineless
PHI	100	Medium	Philodendron selloum Split-Leaf Philodendron	24"	24"		Full, 24" o.c.
PHX	310	Medium	Philodendron 'Xanadu' Dwarf Philodendron	18"	18"		Full, 18" o.c.
POL	40	Medium	Polypodium scolopendria Wart Fern	12"	12"		Full, 12" o.c.
TRF*	1065	Low	Tripsacum floridanum* Dwarf Fakahatchee Grass	24"	24"		Full, 24" o.c.
VIA	105	Medium	Viburnum awabuki Sweet Viburnum 'Awabuki'	48"	24"		Full, 2" o.c.

NOTE: ANY TREES OR SHRUBS PLACED WITHIN WATER, SEWER OR DRAINAGE BASEMENTS SHALL CONFORM TO THE CITY OF DELRAY BEACH STANDARD DETAILS (SEE SHEET LP-3 FOR DETAILS)

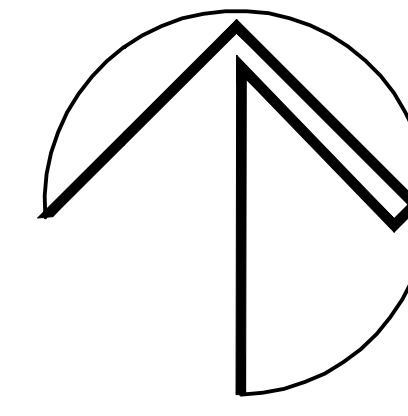
PU	3	Low	Pandanus utilis	10' o.a.	10'	Heavy, Full, Florida Fancy
PY	4	Low	Peltophorum dubium	16'	7'	Full, Standard, Matched
QV*	24	Low	Quercus virginiana*	16'	7'	Standard, Full canopy, Matched
RE*	7	Medium	Roystonea elata*	Min. 16' o.a.	10' G.W.	Full Head, Matched
VM3	12	Medium	Veitchia montgomeryana 'Triple'	Min. 16' o.a.	Each plant 3@7' of G.W. (min. 8' CT)	Heavy, Full, Eq. Size Trunks
WB	7	Medium	Wodyetia bifurcata	Min. 16' o.a.	8' G.W.	Heavy, Full, Eq. Size Trunks

MISCELLANEOUS
* Indicates Native Plant Material

NOTES:
s.f. Sod - All sod to be St. Augustine 'Floritam' solid sod.
c.y. Mulch - landscape contractor shall provide 3" depth of mulch over all planting beds and as per planting specifications
• In case of discrepancies between planting plans and plant list, planting plans take precedent.
• All landscape areas to receive 100% irrigation coverage with 100% overlap
• General contractor responsible for own take off

Plant List LP-1

Palms & Trees:		Water Need	Botanical/Common Name	Height	Spread	Trunk	Remarks
Key	Qty.						
BA	17	Low	Bulnesia arborea Verawood	16'	7'	8' C.T.	Standard; Full canopy, Matched
BA1	4	Low	Bauhinia blakeana Hong Kong Orchid	16'	7'	8' C.T.	Standard; Full canopy, Matched
BB	3	Low	Bucida buceras 'Shady Lady' Shady Lady Black Olive	16'	7'	8' C.T.	Standard; Full canopy, Matched
CA2	3	Low	Calliandra surinamensis Pink Powder Puff	12'	6'	5' C.T.	Full, Standard
CA3	18	Medium	Caesalpinia granadillo Birdcall Tree	16'	7'	8' C.T.	Standard; Full canopy
CB	20	Low	Calophyllum brasiliense Brazilian Beauty/leaf	16'	7'	8' C.T.	Standard; Full canopy
CE*	3	Low	Conocarpus erectus* Green Buttonwood	16'	7'	8' C.T.	Standard; Full canopy, Matched
CF	12	Medium	Caesalpinia ferrea Brazilian Ironwood	16'	7'	8' C.T.	Standard; Full canopy
CN	26	Low	Cocos nucifera 'Maypan' Maypan Coconut Palm	Min. 22' O.A.		7' of G.W.	Full, Jamaican Certified
CP	2	Medium	Carica papaya Papaya	10'	5'		Full
CR*	5	Low	Clusia rosea* Pitch Apple	10'	5'	4' CT	Standard; Full canopy, Matched
CS*	1	Low	Cordia sebestena* Geiger Tree	10'	5'	4' CT	Full, Standard, Matched
DR	5	Low	Delonix regia Royal Poinciana	16'	7'	8' C.T.	Standard; Full canopy, Matched
IA*	32	Low	Ilex attenuate 'East Palatka'* 'East Palatka' Holly	14'	6'		Full to the ground, Matched
IC*	4	Low	Ilex cassine std.* Dahoon Holly	16'	7'	8' C.T.	Standard; Full canopy, Matched
LI	20	Low	Lagerstroemia indica 'Tuscarora' Crape Myrtle 'Tuscarora'	16'	7'	8' C.T.	Full, Standard, Matched
LJ	10	Low	Ligustrum japonicum Wax Privet	8'	8'	Min. 1.75" DBH; 3.5' CT	Full, Multi-stem, (3) stems, not crossing Full, standard, matched
LS	5	Low	Lagerstroemia speciosa Queen Crape Myrtle	16'	7'	8' C.T.	
MI	1	Medium	Mangifera indica Mango	10'	5'		Full
MK	1	Medium	Murraya koenigii Curry Tree	10'	5'		Full
MP	2	Medium	Musa paradisica Plantain	10'	5'		Full
PE3	32	Medium	Ptychosperma elegans 'Triple' Alexander Palm	Min. 16' o.a	Each plant 3@7' of G.W. (min. 8' CT)		Heavy, Full, Eq. Size Trunks
PS	38	Low	Phoenix sylvestris 'Robusta' Robusta Silver Date Palm	Min. 25' o.a	12' wood to nut		



SCALE: 1" = 30'-0"

BASE INFORMATION TAKEN FROM RICHARD JONES ARCHITECTURE

LANDSCAPE DESIGN WORKSHOP

• Planning •
Landscape Architecture

301 Yamato Rd., Suite 1240
Boca Raton, FL 33431
Broward 954-772-0724
Palm Beach 561-212-0271

LDW @
LandscapeDesignWorkshop.com

AURA DELRAY BEACH

City of Delray Beach, Florida

PLANTING PLAN

SEPTEMBER 2, 2020
JULY 29, 2020
REVISED
JUNE 23, 2020

DATE
MF
DRAWN BY
EB
APPROVED BY

This drawing is the property of Landscape Design Workshop, and is an instrument of service not to be reproduced in whole or in part without the express written permission of owner.

LP-1

COPYRIGHT © 2020 LANDSCAPE DESIGN WORKSHOP. ALL RIGHTS RESERVED

AURA DELRAY BEACH
City of Delray Beach, Florida
PLANTING PLAN

SEPTEMBER 2, 2020
JULY 29, 2020

REVISED
JUNE 23, 2020

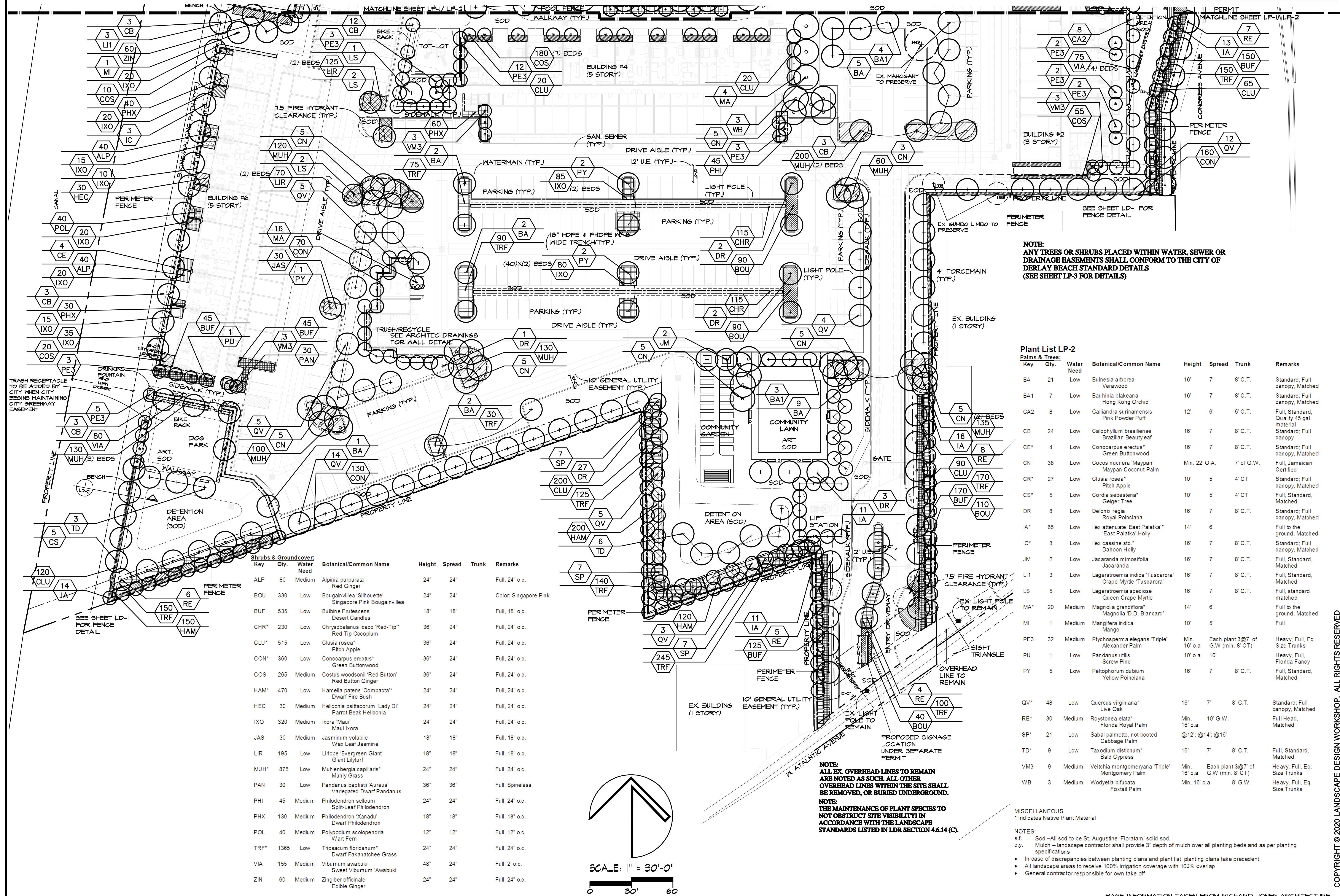
DATE
MF

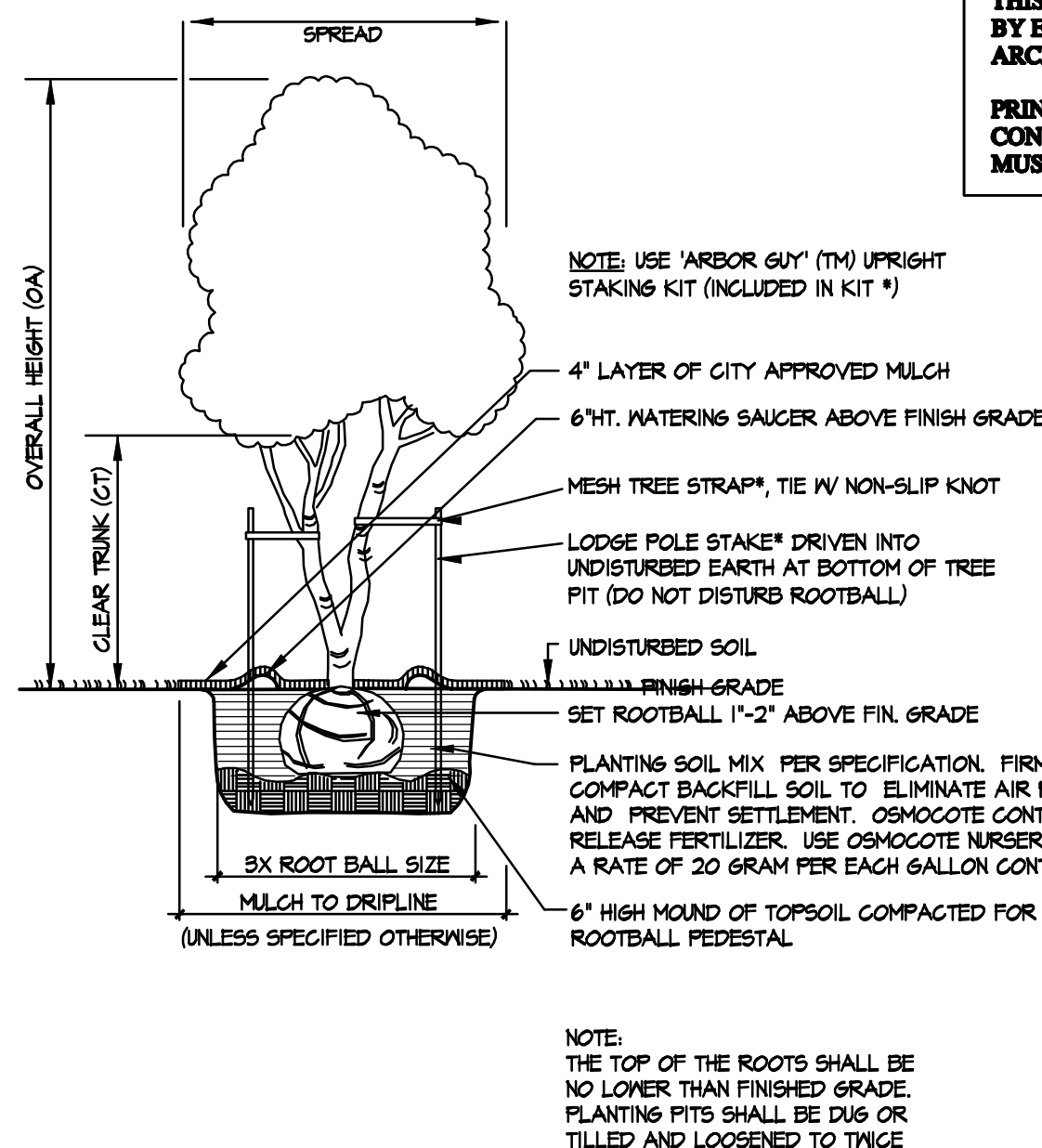
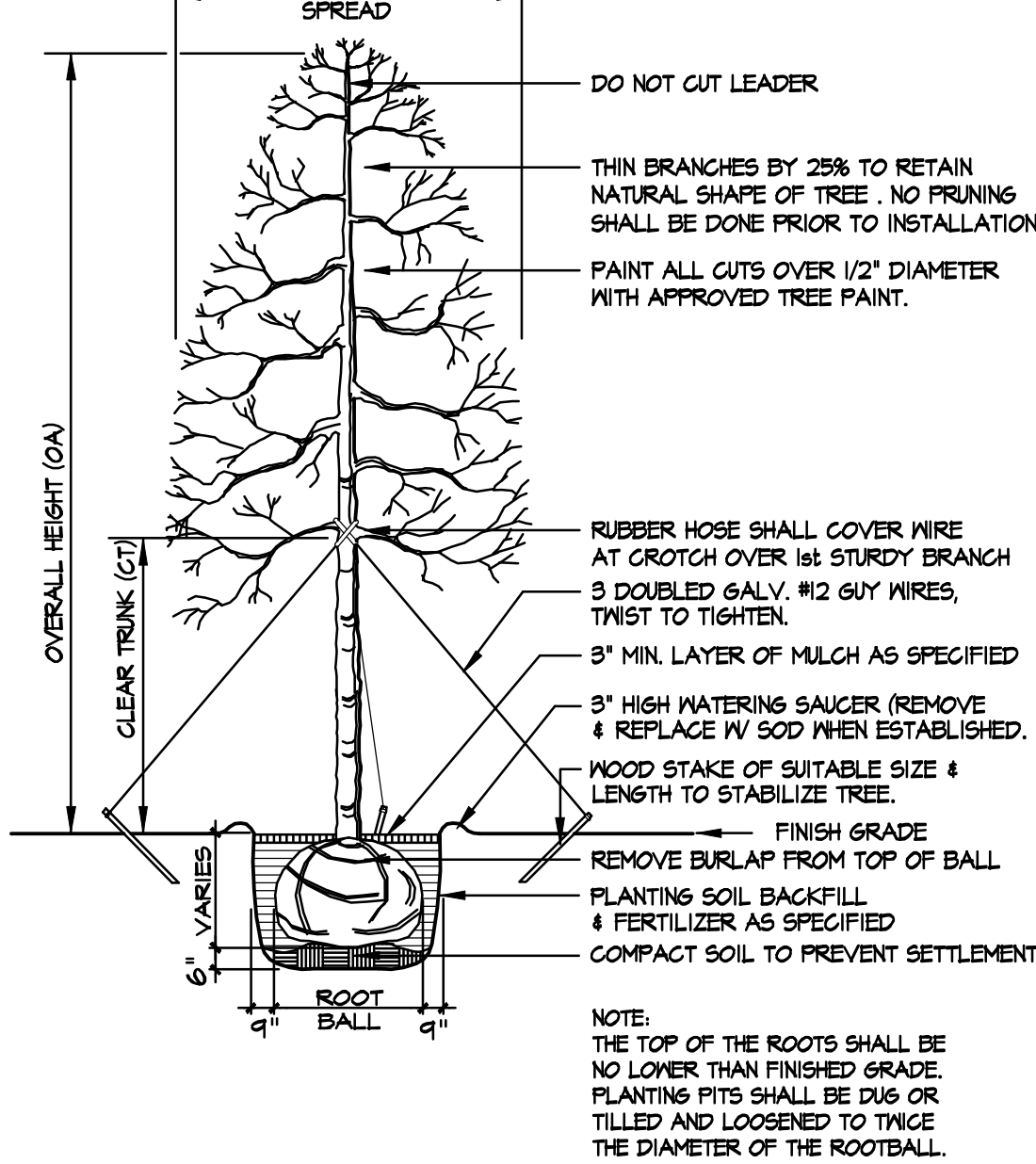
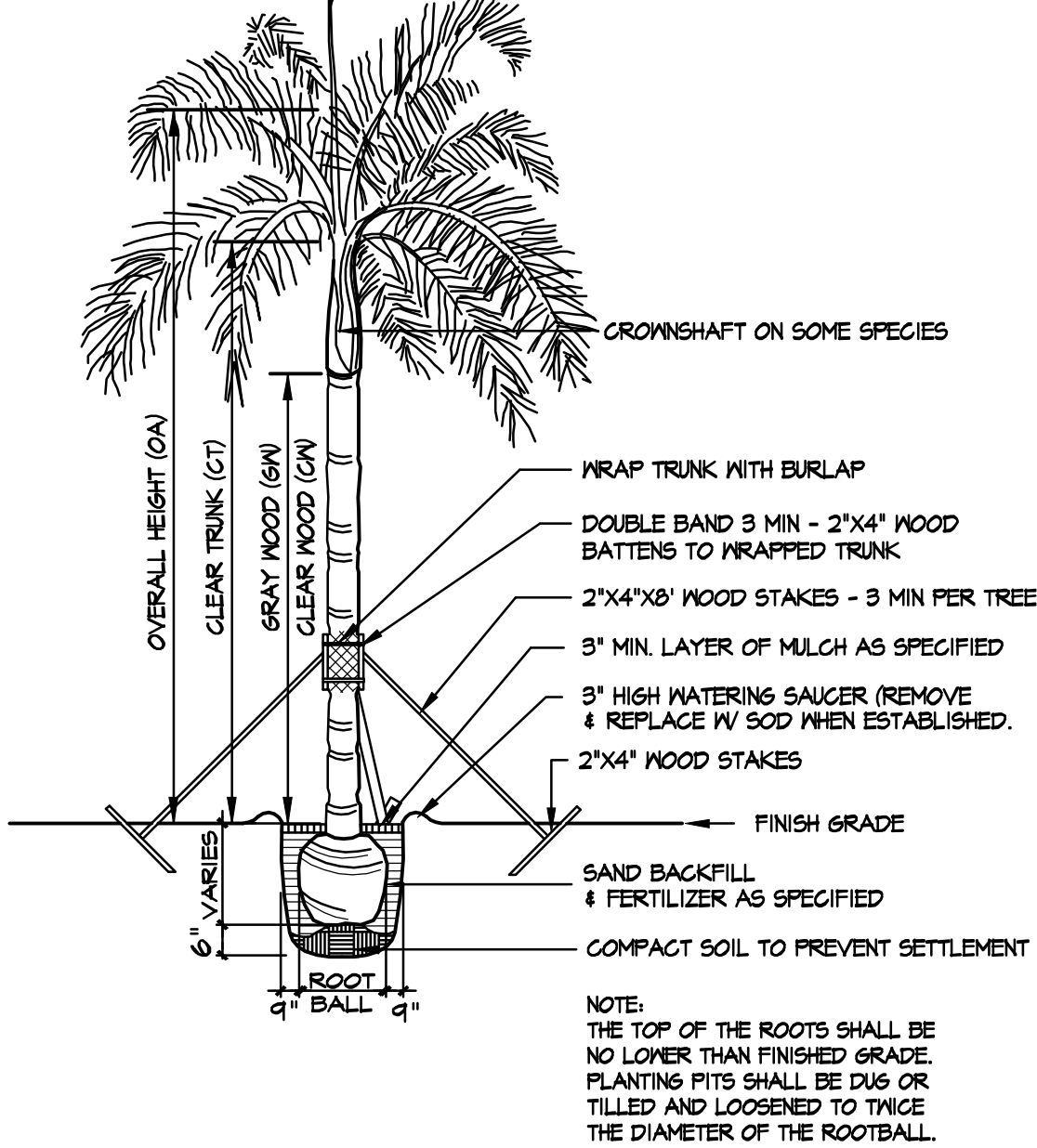
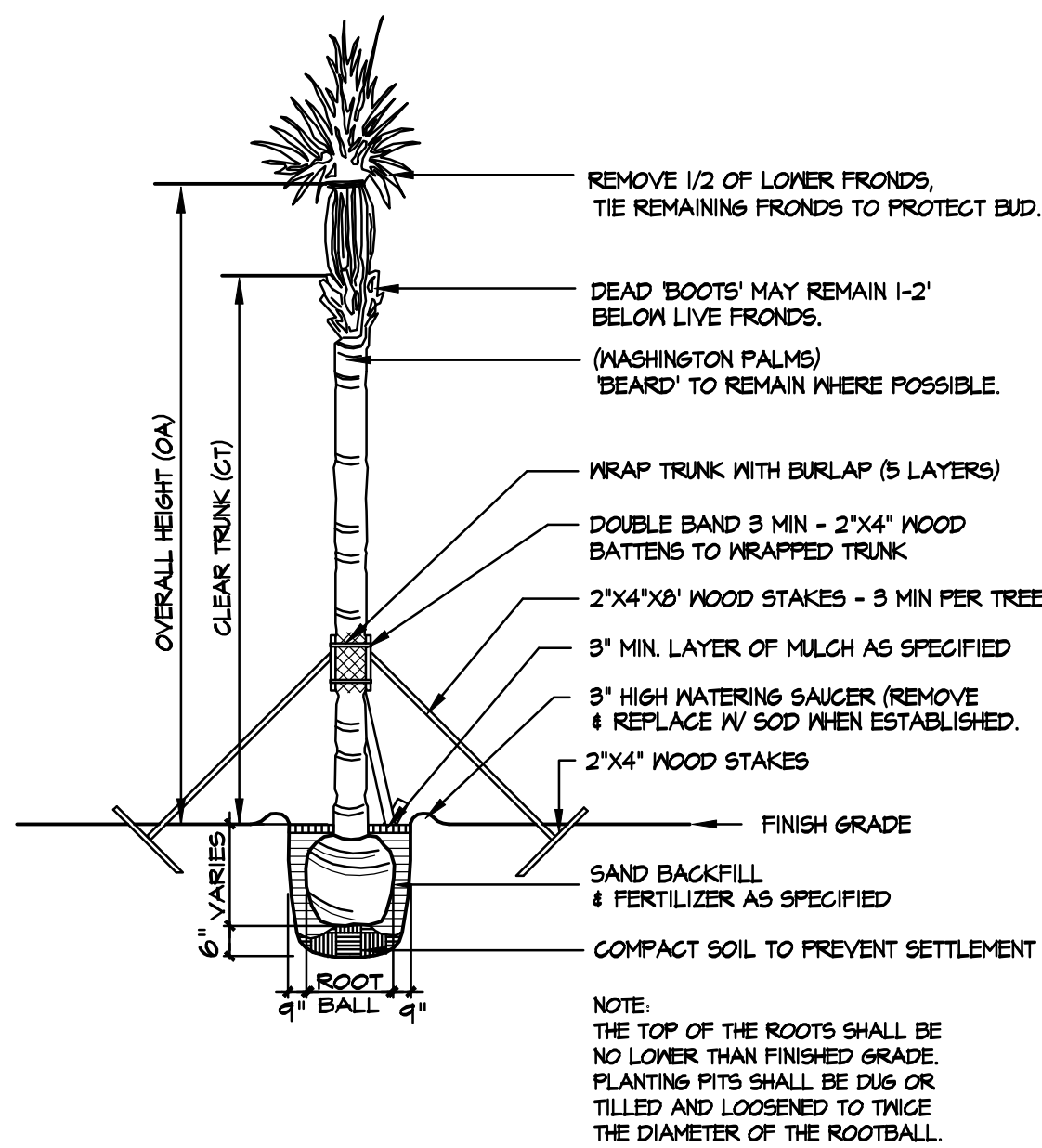
DRAWN BY
EB

APPROVED BY

is drawing is the property of Landscape
Design Workshop, and is an instrument
service not to be reproduced in whole
in part without the express written per-
mission of same.

LP-2





THIS ITEM HAS BEEN DIGITALLY SIGNED AND SEALED BY ERIZ BAR-NUR, REGISTERED LANDSCAPE ARCHITECT, STATE OF FLORIDA, LICENSE NO. 6666879.

PRINTED COPIES OF THIS DOCUMENT ARE NOT CONSIDERED SIGNED AND SEALED AND THE SIGNATURE MUST BE VERIFIED ON ANY ELECTRONIC COPIES.

SABAL / WASHINGTON PALM PLANTING DETAIL

N.T.S.

- DELRAY CITY REQUIRED NOTES**
- ALL PLANT MATERIAL SHALL BE FLORIDA #1 GRADE OR BETTER.
 - MULCH SHALL BE APPLIED TO A MINIMUM DEPTH OF THREE (3) INCHES IN ALL PLANTING BEDS.
 - ALL PROHIBITED PLANT SPECIES SHALL BE ERADICATED FROM THE SITE.
 - ALL LANDSCAPE AREAS SHALL BE PROVIDED WITH AN IRRIGATION SYSTEM, AUTOMATICALLY OPERATED, TO PROVIDE COMPLETE COVERAGE TO ALL PLANT MATERIALS AND GRASS TO BE MAINTAINED.
 - SOD AND IRRIGATION SHALL BE PROVIDED WITHIN THE UNPAVED PORTION OF THE RIGHT-OF-WAY ADJACENT TO THE PROPERTY LINE.
 - REINFORCED CONCRETE CURBING AT LEAST SIX (6) INCHES IN HEIGHT SHALL BE PROVIDED AROUND ALL LANDSCAPE ISLANDS AND AS A SEPARATOR BETWEEN ALL LANDSCAPED AREAS THAT ARE ADJACENT TO VEHICULAR USE AREAS UNLESS SUCH CURBING WILL INTERFERE WITH THE DRAINAGE.

GENERAL NOTES

- All plant materials shall conform to the standards for Florida No. 1 or better as given in "Grades and Standards for Nursery Plants", 2nd Edition: February 1998, State of Florida Department of Agriculture, Tallahassee, or thereto.

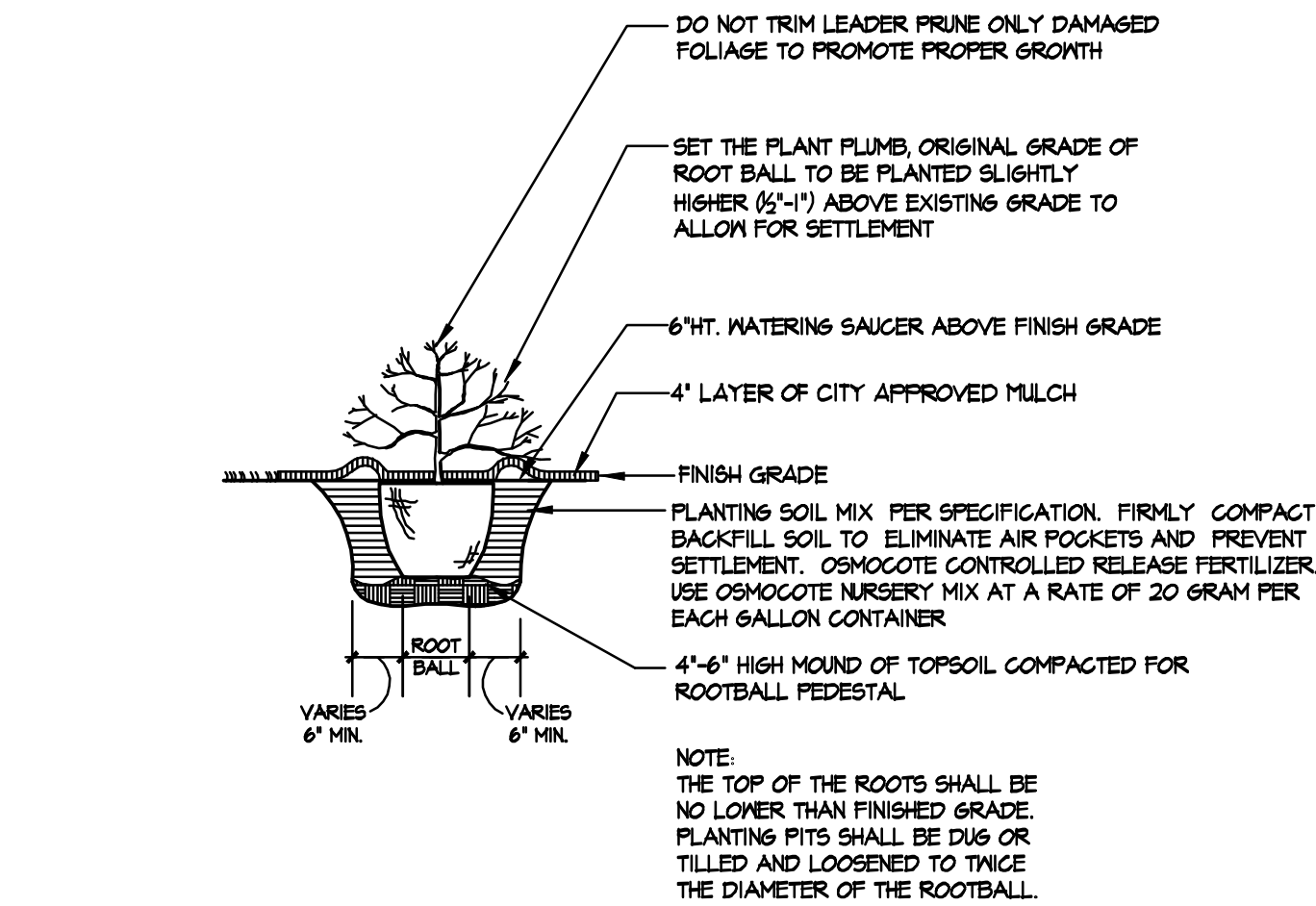
- All landscape areas to be provided with a 100% automatic irrigation system
- All landscaping and irrigation shall be installed in a sound workmanlike manner and according to accepted and proper planting procedures with the quality of plant materials described.
- Specifications of plant materials as follows: Spread-indicates average spread to midpoint; Height (o.a.)-indicates overall height from top of root ball to midpoint of current season's growth; C.T.-indicates clear trunk measurement to first branching; Ft. of Wood-indicates measurement on palms from top of ball to top of stalks.
- All trees shall be properly guyed and staked at the time of planting to ensure proper establishment.
- Hedges shall be planted and maintained so as to form a continuous, unbroken, solid visual screen.
- Planting soil: the depth of the root ball and twice the diameter of the root ball for palms & trees; 6 inches for shrubs & groundcover.
- Landscaped areas, including landscape islands, within or abutting vehicular use areas shall be excavated to a depth of 2.5 feet to ensure that adequate planting soil exists. Parking lot base course material, lime rock, asphalt and other similar material shall be removed to a depth of 2.5 feet.
- A minimum of three inches of shredded mulch or ground cover shall be installed around each tree planting, including palm trees, and throughout hedge and shrub plantings.
- The contractor is responsible for his own quantity count. Any discrepancy between drawings and plant list shall be considered as correct on the drawings.
- The landscape contractor shall schedule an on-site pre-construction meeting with the City Landscaper

PLANTING SOIL:
GRADE LEVEL SOIL: 50/50 MIX BY ATLAS PEAT & SOIL, OR APPROVED EQUAL FOR TREES, SHRUBS & GROUNDCOVER (561-734-7300)

SOIL SAMPLE TOGETHER WITH CERTIFIED SOIL ANALYSIS REPORT MUST BE SUBMITTED FOR APPROVAL PRIOR TO CONSTRUCTION

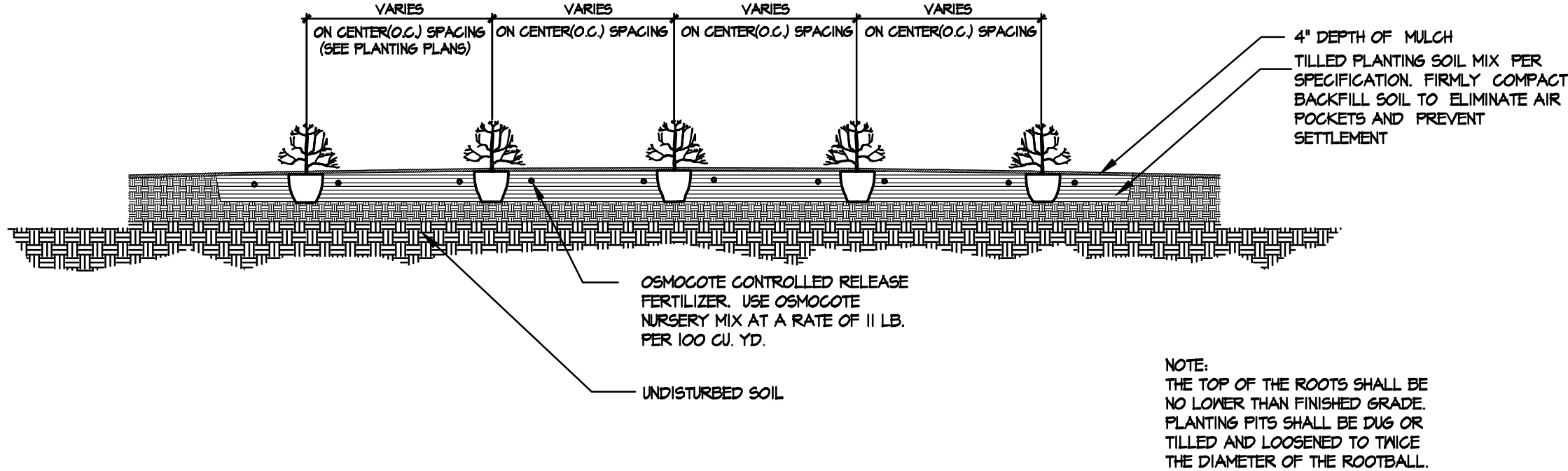
MULCH:
PREMIUM GREEN SMART MELALEUKA MULCH BY AMERIGROW, OR APPROVED EQUAL (561-499-8148)

MULCH SAMPLE TOGETHER WITH CERTIFIED ANALYSIS REPORT MUST BE SUBMITTED FOR OWNER & LANDSCAPE ARCHITECT APPROVAL PRIOR TO CONSTRUCTION



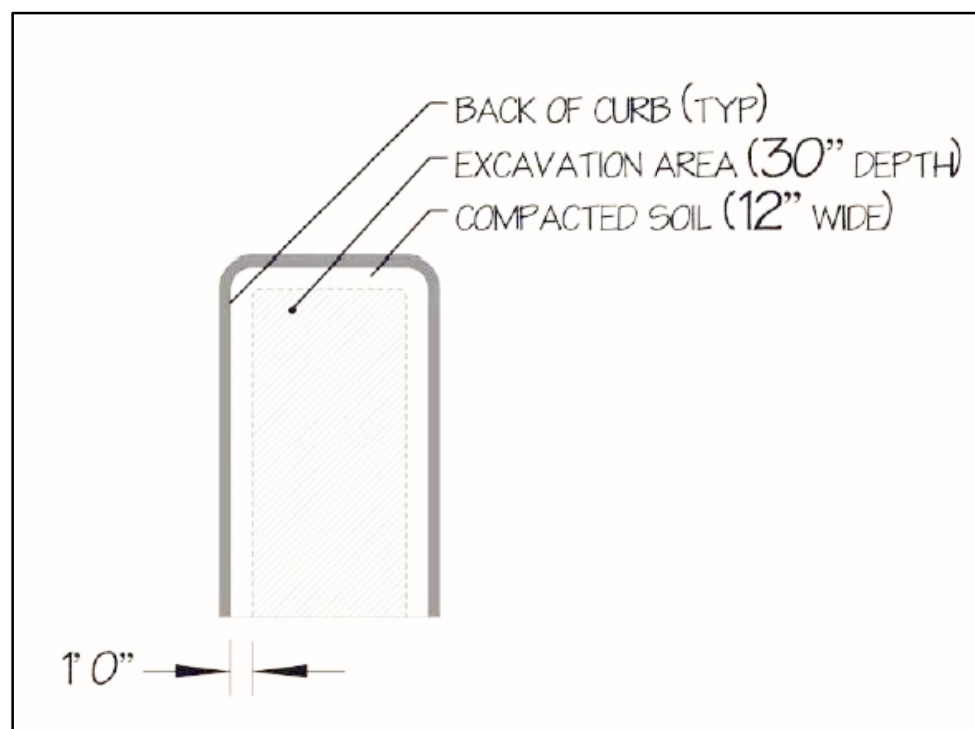
TYPICAL SHRUB / GROUND COVER PLANTING DETAIL

N.T.S.



TYPICAL SMALL SHRUB / GROUND COVER PLANTING DETAIL

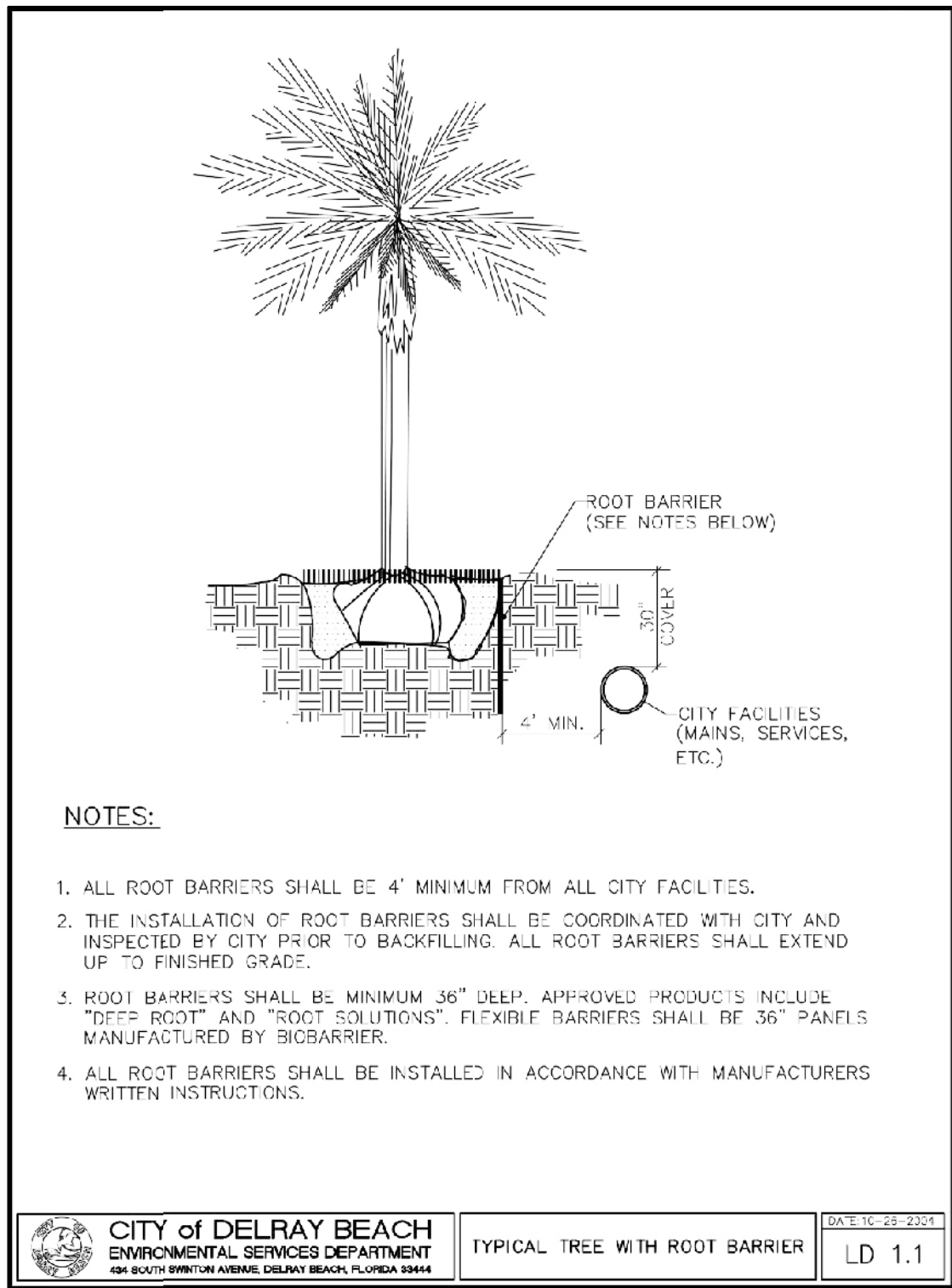
N.T.S.



LANDSCAPE EXCAVATION AND BACKFILL DETAIL

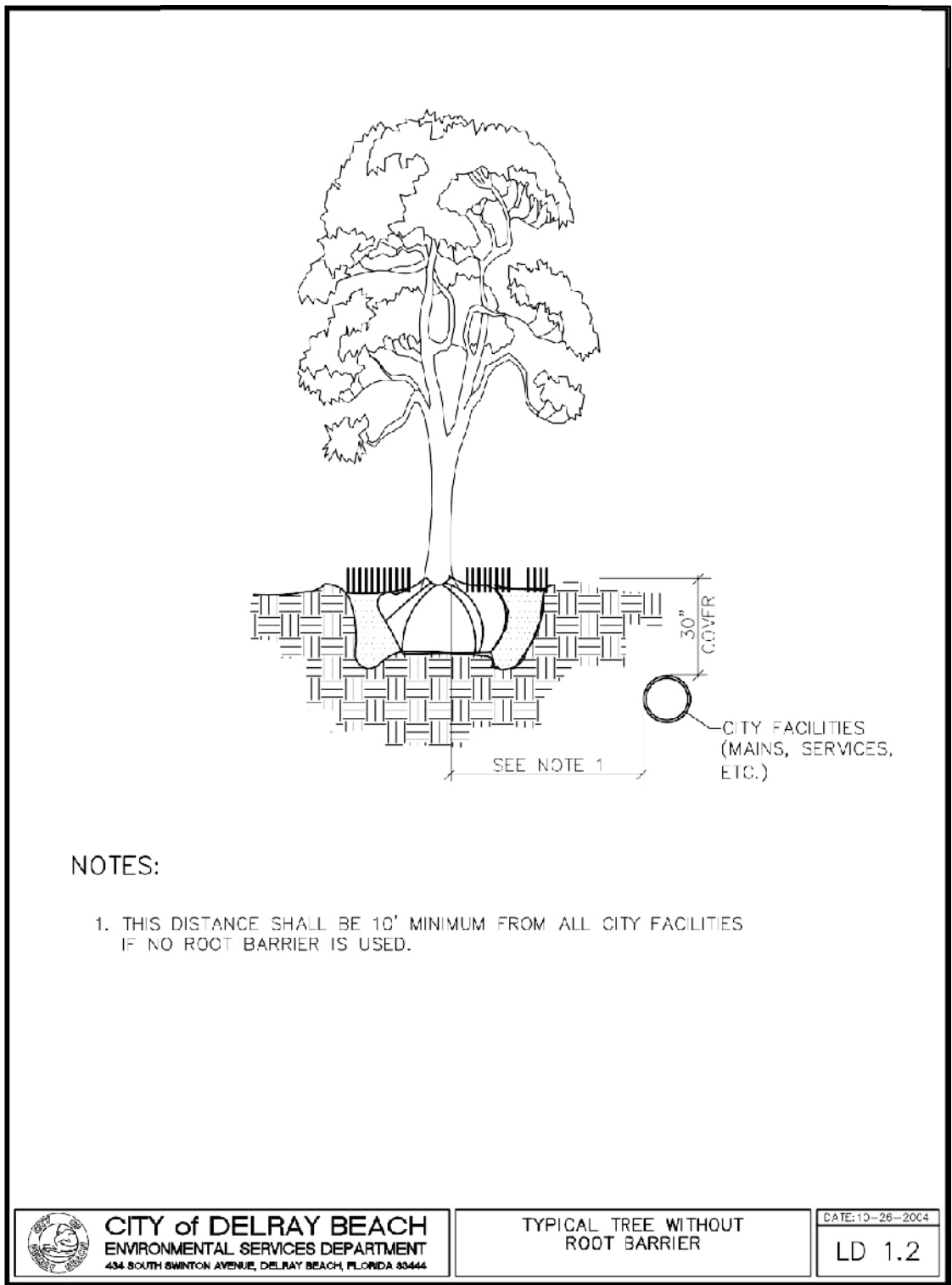
N.T.S.

NOTE:
Existing native soil within all landscape islands, interior landscape strips and perimeter landscape strips, adjacent to vehicular use areas shall be excavated down to a depth of thirty (30) inches below existing grade, except for a 12" buffer from the inside of curb or pavement. A suitable planting mixture of fifty/fifty (50/50), sixty/forty (60/40)(sand/topsoil) or as otherwise indicated by the Registered Landscape Architect, shall either be backfilled in place of the native soil or efficiently mixed with the native soil to be mixed, it shall first be screened to remove rocks and debris larger than one-half (1/2) inch in diameter prior to mixing. All properties under this section shall be required to have an open bed inspection prior to backfilling to insure the thirty (30) inch depth as been met.



- NOTES:**
1. ALL ROOT BARRIERS SHALL BE 4" MINIMUM FROM ALL CITY FACILITIES.
 2. THE INSTALLATION OF ROOT BARRIERS SHALL BE COORDINATED WITH CITY AND INSPECTED BY CITY PRIOR TO BACKFILLING. ALL ROOT BARRIERS SHALL EXTEND UP TO FINISHED GRADE.
 3. ROOT BARRIERS SHALL BE MINIMUM 36" DEEP. APPROVED PRODUCTS INCLUDE "DEEP ROOT" AND "ROOT SOLUTIONS". FLEXIBLE BARRIERS SHALL BE 36" PANELS MANUFACTURED BY BICARRIER.
 4. ALL ROOT BARRIERS SHALL BE INSTALLED IN ACCORDANCE WITH MANUFACTURERS WRITTEN INSTRUCTIONS.

CITY OF DELRAY BEACH
ENVIRONMENTAL SERVICES DEPARTMENT
TYPICAL TREE WITH ROOT BARRIER
DATE: 06-28-2024
LD 1.1



- NOTES:**
1. THIS DISTANCE SHALL BE 10" MINIMUM FROM ALL CITY FACILITIES IF NO ROOT BARRIER IS USED.

CITY OF DELRAY BEACH
ENVIRONMENTAL SERVICES DEPARTMENT
TYPICAL TREE WITHOUT ROOT BARRIER
DATE: 06-28-2024
LD 1.2

ROOT BARRIER DETAIL - CITY OF DELRAY BEACH STANDARD DETAILS

NOTE: ANY TREES OR SHRUBS PLACED WITHIN WATER, SEWER OR DRAINAGE BASEMENTS SHALL CONFORM TO THE CITY OF DELRAY BEACH STANDARD DETAILS

LANDSCAPE DESIGN WORKSHOP

• Planning •
Landscape Architecture

301 Yamato Rd., Suite 1240
Boca Raton, FL 33431
Broward 954-772-0724
Palm Beach 561-412-0211

LDW @
LandscapeDesignWorkshop.com

TRC
TRINISIC
RESIDENTIAL GROUP
BUILDING VALUE IN MODERN REAL ESTATE

AURA DELRAY BEACH

City of Delray Beach, Florida

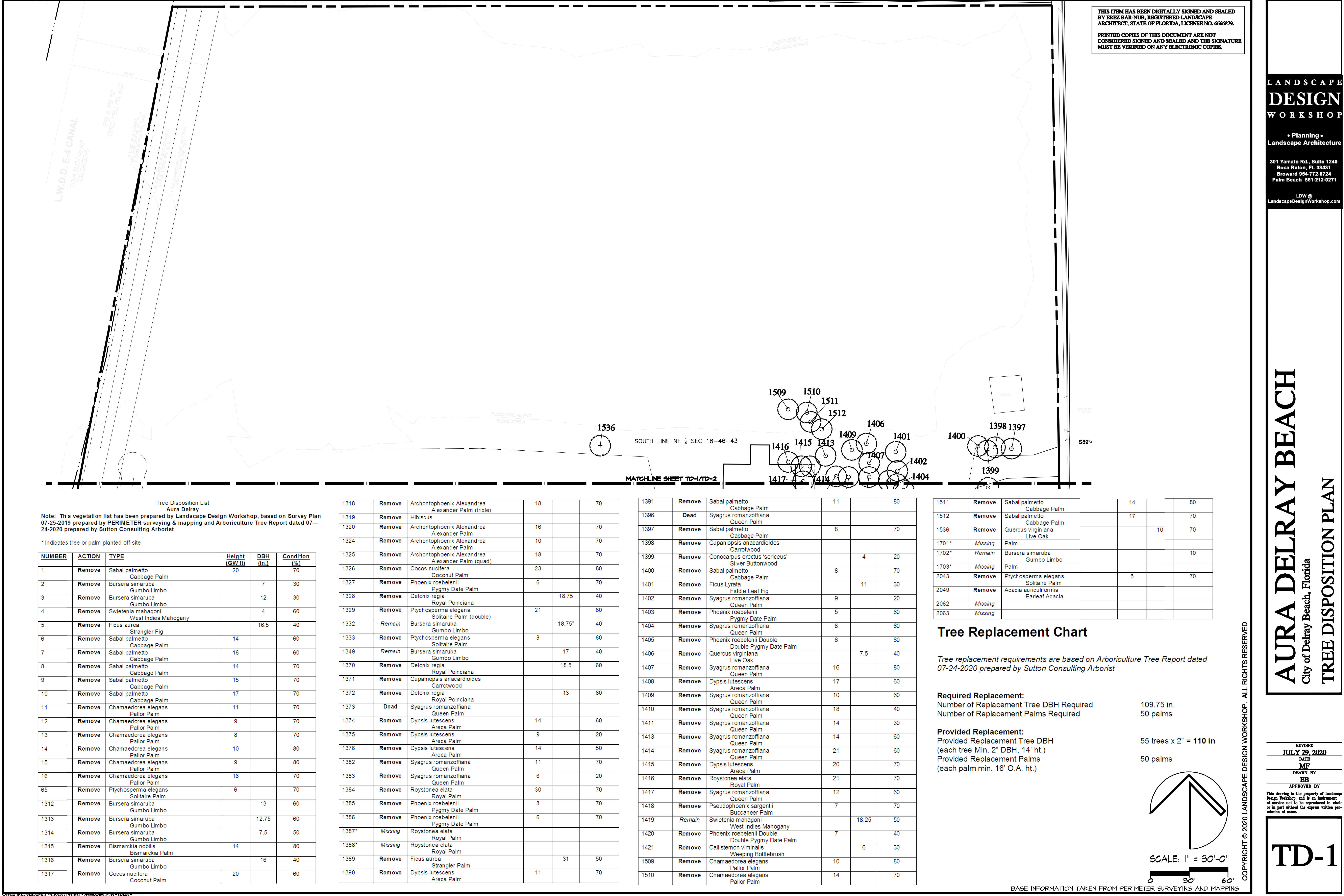
PLANTING DETAILS & NOTES

JULY 29, 2020
REVISED
JUNE 23, 2020
DATE
MF
DRAWN BY
EB
APPROVED BY

This drawing is the property of Landscape Design Workshop, and is an instrument of service and to be reproduced in whole or in part without the express written permission of name.

LP-3

COPYRIGHT © 2020 LANDSCAPE DESIGN WORKSHOP. ALL RIGHTS RESERVED



THIS ITEM HAS BEEN DIGITALLY SIGNED AND SEALED
BY EREZ BAR-NUR, REGISTERED LANDSCAPE
ARCHITECT, STATE OF FLORIDA, LICENSE NO. 6666879.

PRINTED COPIES OF THIS DOCUMENT ARE NOT
CONSIDERED SIGNED AND SEALED AND THE SIGNATURE
MUST BE VERIFIED ON ANY ELECTRONIC COPIES.

Tree Disposition List
Aura Delray

Note: This vegetation list has been prepared by Landscape Design Workshop, based on Survey Plan 07-25-2019 prepared by PERIMETER surveying & mapping and Arboriculture Tree Report dated 07-24-2020 prepared by Sutton Consulting Arborist

* Indicates tree or palm planted off-site

NUMBER	ACTION	TYPE	Height (GW ft)	DBH (in.)	Condition (%)
1	Remove	Sabal palmetto Cabbage Palm	20		70
2	Remove	Bursera simaruba Gumbo Limbo		7	30
3	Remove	Bursera simaruba Gumbo Limbo		12	30
4	Remove	Swietenia mahagoni West Indies Mahogany		4	60
5	Remove	Ficus aurea Strangler Fig		16.5	40
6	Remove	Sabal palmetto Cabbage Palm	14		60
7	Remove	Sabal palmetto Cabbage Palm	16		60
8	Remove	Sabal palmetto Cabbage Palm	14		70
9	Remove	Sabal palmetto Cabbage Palm	15		70
10	Remove	Sabal palmetto Cabbage Palm	17		70
11	Remove	Chamaedorea elegans Pallor Palm	11		70
12	Remove	Chamaedorea elegans Pallor Palm	9		70
13	Remove	Chamaedorea elegans Pallor Palm	8		70
14	Remove	Chamaedorea elegans Pallor Palm	10		80
15	Remove	Chamaedorea elegans Pallor Palm	9		80
16	Remove	Chamaedorea elegans Pallor Palm	16		70
65	Remove	Ptychosperma elegans Solitaire Palm	6		70
1312	Remove	Bursera simaruba Gumbo Limbo		13	60
1313	Remove	Bursera simaruba Gumbo Limbo		12.75	60
1314	Remove	Bursera simaruba Gumbo Limbo		7.5	50
1315	Remove	Bismarckia nobilis Bismarckia Palm		14	80
1316	Remove	Bursera simaruba Gumbo Limbo		16	40
1317	Remove	Cocos nucifera Coconut Palm	20		60

1318	Remove	Archontophoenix Alexandrea Alexander Palm (triple)	18		70
1319	Remove	Hibiscus			
1320	Remove	Archontophoenix Alexandrea Alexander Palm	16		70
1324	Remove	Archontophoenix Alexandrea Alexander Palm	10		70
1325	Remove	Archontophoenix Alexandrea Alexander Palm	18		70
1326	Remove	Cocos nucifera Coconut Palm	23		80
1327	Remove	Phoenix roebelenii Pygmy Date Palm	6		70
1328	Remove	Delonix regia Royal Poinciana		18.75	40
1329	Remove	Ptychosperma elegans Solitaire Palm (double)	21		80
1332	Remain	Bursera simaruba Gumbo Limbo		18.75"	40
1333	Remove	Ptychosperma elegans Solitaire Palm	8		60
1349	Remain	Bursera simaruba Gumbo Limbo		17	40
1370	Remove	Delonix regia Royal Poinciana		18.5	60
1371	Remove	Cupaniopsis anacardioides Carrotwood			
1372	Remove	Delonix regia Royal Poinciana		13	60
1373	Dead	Syagrus romanzoffiana Queen Palm			
1374	Remove	Dypsis lutescens Areca Palm	14		60
1375	Remove	Dypsis lutescens Areca Palm	9		20
1376	Remove	Dypsis lutescens Areca Palm	14		50
1382	Remove	Syagrus romanzoffiana Queen Palm	11		70
1383	Remove	Syagrus romanzoffiana Queen Palm	6		20
1384	Remove	Roystonea elata Royal Palm	30		70
1385	Remove	Phoenix roebelenii Pygmy Date Palm	8		70
1386	Remove	Phoenix roebelenii Pygmy Date Palm	6		70
1387*	Missing	Roystonea elata Royal Palm			
1388*	Missing	Roystonea elata Royal Palm			
1389	Remove	Ficus aurea Strangler Palm		31	50
1390	Remove	Dypsis lutescens Areca Palm	11		70

1391	Remove	Sabal palmetto Cabbage Palm	11		80
1396	Dead	Syagrus romanzoffiana Queen Palm			
1397	Remove	Sabal palmetto Cabbage Palm	8		70
1398	Remove	Cupaniopsis anacardioides Carrotwood			
1399	Remove	Conocarpus erectus 'sericeus' Silver Buttonwood		4	20
1400	Remove	Sabal palmetto Cabbage Palm	8		70
1401	Remove	Ficus Lyrata Fiddle Leaf Fig		11	30
1402	Remove	Syagrus romanzoffiana Queen Palm	9		20
1403	Remove	Phoenix roebelenii Pygmy Date Palm	5		60
1404	Remove	Syagrus romanzoffiana Queen Palm	8		60
1405	Remove	Phoenix roebelenii Double Double Pygmy Date Palm	6		60
1406	Remove	Quercus virginiana Live Oak		7.5	40
1407	Remove	Syagrus romanzoffiana Queen Palm	16		80
1408	Remove	Dypsis lutescens Areca Palm	17		60
1409	Remove	Syagrus romanzoffiana Queen Palm	10		60
1410	Remove	Syagrus romanzoffiana Queen Palm	18		40
1411	Remove	Syagrus romanzoffiana Queen Palm	14		30
1413	Remove	Syagrus romanzoffiana Queen Palm	14		60
1414	Remove	Syagrus romanzoffiana Queen Palm	21		60
1415	Remove	Dypsis lutescens Areca Palm	20		70
1416	Remove	Roystonea elata Royal Palm	21		70
1417	Remove	Syagrus romanzoffiana Queen Palm	12		60
1418	Remove	Pseudophoenix sargentii Buccaneer Palm	7		70
1419	Remain	Swietenia mahagoni West Indies Mahogany		18.25	50
1420	Remove	Phoenix roebelenii Double Double Pygmy Date Palm	7		40
1421	Remove	Callistemon viminalis Weeping Bottlebrush		6	30
1509	Remove	Chamaedorea elegans Pallor Palm	10		80
1510	Remove	Chamaedorea elegans Pallor Palm	14		70

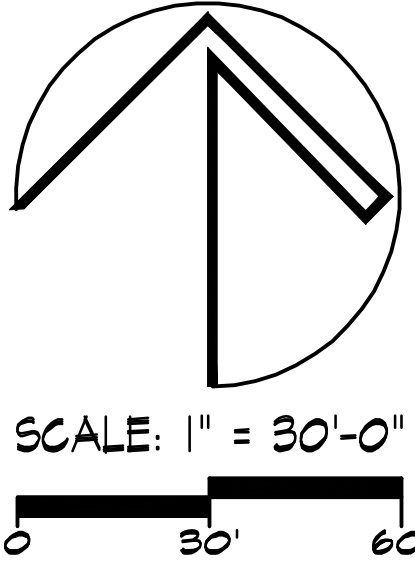
1511	Remove	Sabal palmetto Cabbage Palm	14		80
1512	Remove	Sabal palmetto Cabbage Palm	17		70
1536	Remove	Quercus virginiana Live Oak		10	70
1701*	Missing	Palm			
1702*	Remain	Bursera simaruba Gumbo Limbo			10
1703*	Missing	Palm			
2043	Remove	Ptychosperma elegans Solitaire Palm	5		70
2049	Remove	Acacia auriculiformis Earleaf Acacia			
2062	Missing				
2063	Missing				

Tree Replacement Chart

Tree replacement requirements are based on Arboriculture Tree Report dated 07-24-2020 prepared by Sutton Consulting Arborist

Required Replacement:
Number of Replacement Tree DBH Required 109.75 in.
Number of Replacement Palms Required 50 palms

Provided Replacement:
Provided Replacement Tree DBH (each tree Min. 2" DBH, 14' ht.) 55 trees x 2" = 110 in
Provided Replacement Palms (each palm min. 16" O.A. ht.) 50 palms



BASE INFORMATION TAKEN FROM PERIMETER SURVEYING AND MAPPING

COPYRIGHT © 2020 LANDSCAPE DESIGN WORKSHOP. ALL RIGHTS RESERVED

LANDSCAPE DESIGN WORKSHOP

• Planning •
Landscape Architecture

301 Yamato Rd., Suite 1240
Boca Raton, FL 33431
Broward 954-772-0724
Palm Beach 561-212-0271

LDW @
LandscapeDesignWorkshop.com

AURA DELRAY BEACH

City of Delray Beach, Florida

TREE DISPOSITION PLAN

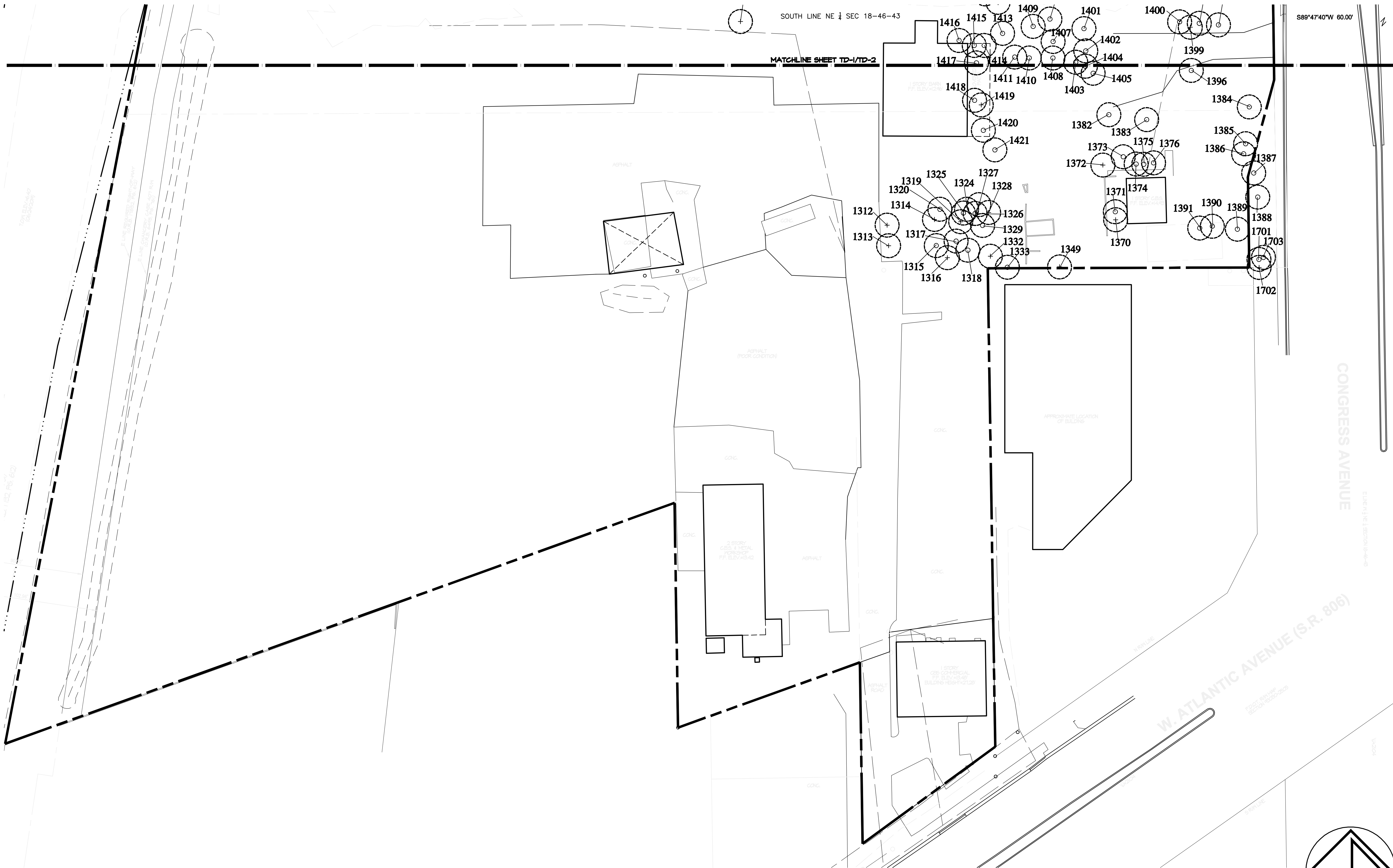
REVISED
JULY 29, 2020
DATE
MF
DRAWN BY
EB
APPROVED BY

This drawing is the property of Landscape Design Workshop, and is an instrument of service not to be reproduced in whole or in part without the express written permission of name.

TD-1

THIS ITEM HAS BEEN DIGITALLY SIGNED AND SEALED
BY EREZ BAR-NUR, REGISTERED LANDSCAPE
ARCHITECT, STATE OF FLORIDA, LICENSE NO. 6666879.

PRINTED COPIES OF THIS DOCUMENT ARE NOT
CONSIDERED SIGNED AND SEALED AND THE SIGNATURE
MUST BE VERIFIED ON ANY ELECTRONIC COPIES.



NOTE: SEE SHEET TD-1 FOR TREE DISPOSITION LIST

LANDSCAPE
DESIGN
WORKSHOP

• Planning •
Landscape Architecture

301 Yamato Rd., Suite 1240
Boca Raton, FL 33431
Broward 954-772-0724
Palm Beach 561-212-0271

LDW @
LandscapeDesignWorkshop.com

AURA DELRAY BEACH

City of Delray Beach, Florida

TREE DISPOSITION PLAN

REVISED
JULY 29, 2020
DATE
MF
DRAWN BY
EB
APPROVED BY

This drawing is the property of Landscape
Design Workshop, and is an instrument
of service not to be reproduced in whole
or in part without the express written per-
mission of owner.

TD-2

COPYRIGHT © 2020 LANDSCAPE DESIGN WORKSHOP. ALL RIGHTS RESERVED

BASE INFORMATION TAKEN FROM PERIMETER SURVEYING AND MAPPING