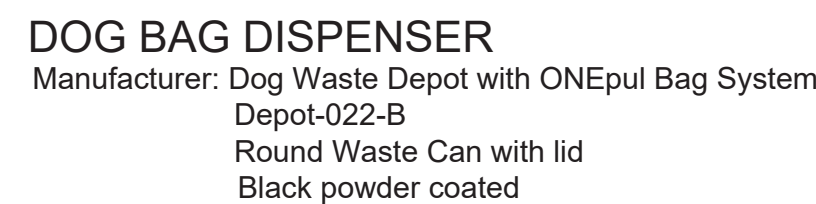
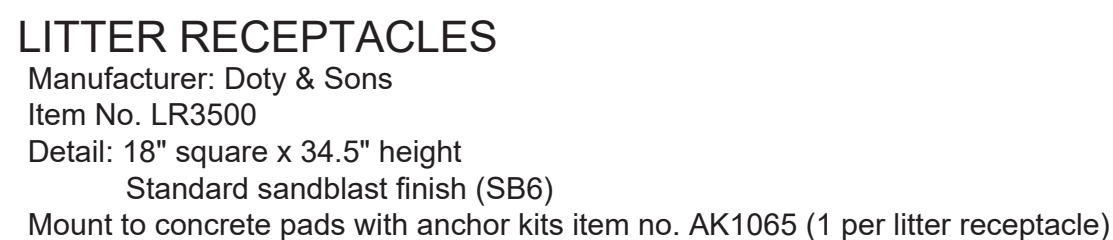
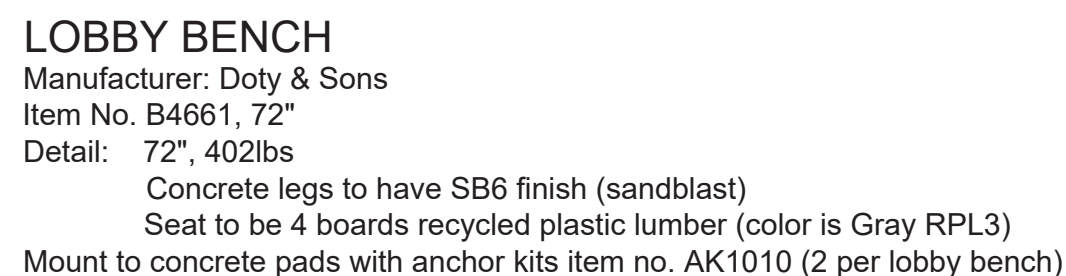


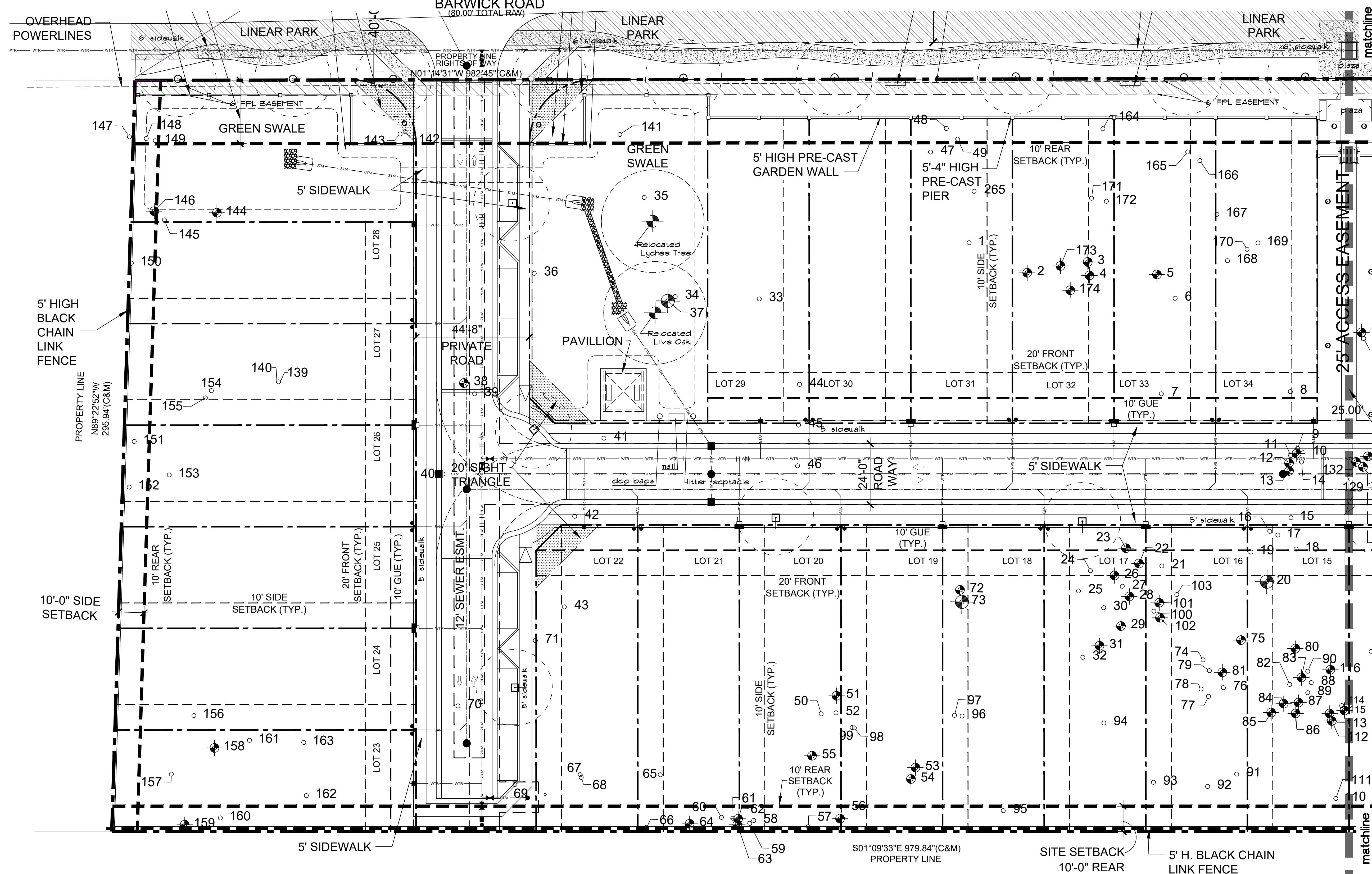


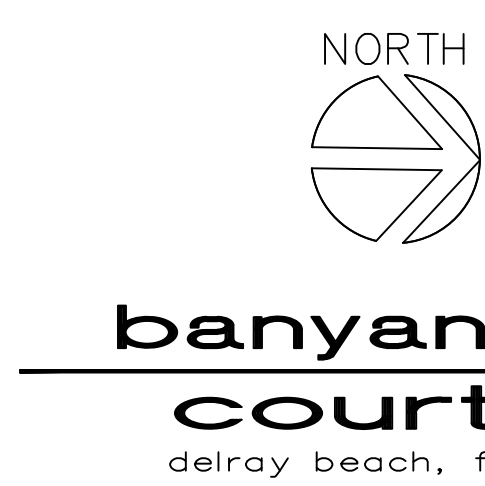
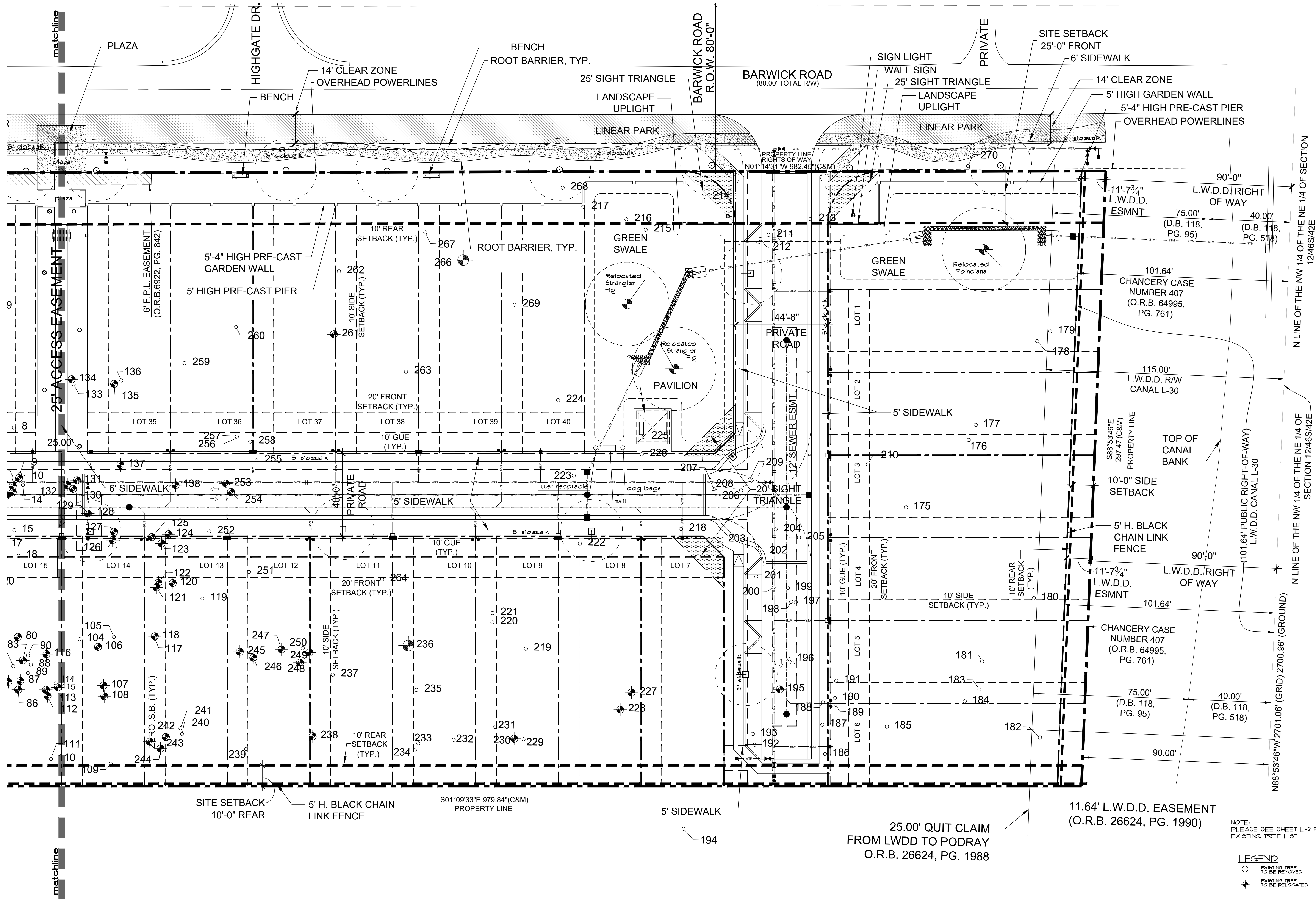
sheet



EXISTING TREE LIST / ARBORIST REPORT BY JOHN SUTTON, ISA Certified Arborist #30-0326 (DATED 3/25/2019)

Tree #	Plant Common name	Scientific/Botanical name	Height FT.	DBH Inches	Condition %	Notes	Status	Tree #	Plant Common name	Scientific/Botanical name	Height FT.	DBH Inches	Condition %	Notes	Status	Tree #	Plant Common name	Scientific/Botanical name	Height FT.	DBH Inches	Condition %	Notes	Status
1	Live oak	Quercus virginiana	34.5	40		Spurs foliage, decay in trunk, storm damage	remove	45	Seagrape	Coccoloba uvifera	24	20		Co-canopy	remove	135	Sabal palm	Sabal palmetto	30	70			relocate
2	Sabal palm	Sabal palmetto	21	70		Cactus	relocate	46	Sabal palm	Sabal palmetto	36	30		Co-canopy, storm damage	remove	136	Sabal palm	Sabal palmetto	18	70		Dead	relocate
3	Sabal palm	Sabal palmetto	25	70		Cactus	relocate	47	Live oak	Quercus virginiana	37	40		Severe co-domin with inclusion, co-canopy	remove	137	Sabal palm	Sabal palmetto	25	70			relocate
4	Sabal palm	Sabal palmetto	25	70			relocate	48	Live oak	Quercus virginiana	12.5	15		Sub-canopy	remove	138	Sabal palm	Sabal palmetto	25	70			relocate
5	Sabal palm	Sabal palmetto	25	70			relocate	49	Live oak	Quercus virginiana	13.5	15		Sub-canopy	remove	139	Strangler fig	Ficus aurea	13	20			relocate
6	Sabal palm	Sabal palmetto	19	70			remove	50	Seagrape	Coccoloba uvifera	20	60			remove	140	Sabal palm	Sabal palmetto	20	70			relocate
7	Sabal palm	Sabal palmetto	17	70			remove	51	Sabal palm	Sabal palmetto	25	60			relocate	141	Pine apple	Styzygium jambos	24	50		Storm damage	relocate
8	Sabal palm	Sabal palmetto	17	60			relocate	52	Sabal palm	Sabal palmetto	18	80		Dead	relocate	142	Live oak	Quercus virginiana	39	50		Power lines	relocate
9	Woman's tongue	Albizia lebbek	14	30		Invasive species	remove	53	Sabal palm	Sabal palmetto	18	80			relocate	143	Live oak	Quercus virginiana	39	40			relocate
10	Sabal palm	Sabal palmetto	25	70			relocate	54	Sabal palm	Sabal palmetto	18	80			relocate	144	Live oak	Quercus virginiana	25	70			relocate
11	Sabal palm	Sabal palmetto	20	70			relocate	55	Sabal palm	Sabal palmetto	20	80			relocate	145	Java plum	Styzygium cuneatum	9.5	50		Invasive species	relocate
12	Sabal palm	Sabal palmetto	25	70			relocate	56	Sabal palm	Sabal palmetto	18	80			relocate	146	Sabal palm	Sabal palmetto	20	80			relocate
13	Sabal palm	Sabal palmetto	15	70			relocate	57	Woman's tongue	Albizia lebbek	10.5	30		Invasive species	relocate	147	Sabal palm	Sabal palmetto	20	70			relocate
14	Sabal palm	Sabal palmetto	25	70			relocate	58	Sabal palm	Sabal palmetto	18	70			relocate	148	Sabal palm	Sabal palmetto	20	70			relocate
15	Sabal palm	Sabal palmetto	17	70			remove	59	Sabal palm	Sabal palmetto	18	70			remove	149	Sabal palm	Sabal palmetto	20	70			relocate
16	Sabal palm	Sabal palmetto	17	70			remove	60	Sabal palm	Sabal palmetto	18	70			remove	150	Woman's tongue	Albizia lebbek	8	20		Invasive species	relocate
17	Sabal palm	Sabal palmetto	17	70			remove	61	Strangler fig	Ficus aurea	10	30			remove	151	Woman's tongue	Albizia lebbek	14	50			relocate
18	Sabal palm	Sabal palmetto	17	70			remove	62	Sabal palm	Sabal palmetto	22	70			relocate	152	Live oak	Quercus virginiana	24	30		Co-canopy, major decay in trunk	relocate
19	Sabal palm	Sabal palmetto	17	70			remove	63	Sabal palm	Sabal palmetto	30	70			relocate	153	Sabal palm	Sabal palmetto	20	60			relocate
20	Lycbe	Litchi chinensis	26	60			remove	64	Sabal palm	Sabal palmetto	30	70			relocate	154	Sabal palm	Sabal palmetto	20	70			relocate
21	Sabal palm	Sabal palmetto	20	70			relocate	65	Sabal palm	Sabal palmetto	12	70			remove	155	Sabal palm	Sabal palmetto	20	70			relocate
22	Sabal palm	Sabal palmetto	23	70			relocate	66	Java plum	Styzygium cuneatum	14	20		Invasive species	remove	156	Live oak	Quercus virginiana	36	50		Co-canopy	relocate
23	Sabal palm	Sabal palmetto	23	70			relocate	67	Scheffler	Schefflera actinophylla	15	70		Invasive species	remove	157	Sabal palm	Sabal palmetto	18	70			relocate
24	Sabal palm	Sabal palmetto	20	70			remove	68	Sabal palm	Sabal palmetto	15	70			remove	158	Sabal palm	Sabal palmetto	25	70			relocate
25	Sabal palm	Sabal palmetto	20	70			remove	69	Sabal palm	Sabal palmetto	14	20		Invasive species, up-rooted, dying, storm damage	remove	159	Sabal palm	Sabal palmetto	25	70			relocate
26	Sabal palm	Sabal palmetto	23	70			remove	70	Ficus	Ficus microcarpa	80	20			remove	160	Sabal palm	Sabal palmetto	25	70		Dead	relocate
27	Sabal palm	Sabal palmetto	18	70			relocate	71	Sabal palm	Sabal palmetto	20	80			relocate	161	Live oak	Quercus virginiana	48	30		Major dead wood	remove
28	Sabal palm	Sabal palmetto	25	70			relocate	72	Sabal palm	Sabal palmetto	20	70			relocate	162	Java plum	Styzygium cuneatum	14.5	30		Invasive species, co-canopy	remove
29	Sabal palm	Sabal palmetto	25	70			relocate	73	Strangler fig	Ficus aurea	60	30			relocate	163	Quercus virginiana	Quercus virginiana	24	50		Co-canopy	remove
30	Sabal palm	Sabal palmetto	20	70			relocate	74	Sabal palm	Sabal palmetto	20	70			relocate	164	Live oak	Quercus virginiana	36	40		Co-canopy, power lines	remove
31	Sabal palm	Sabal palmetto	20	70			relocate	75	Sabal palm	Sabal palmetto	30	70			relocate	165	Live oak	Quercus virginiana	24	30		Co-canopy	remove
32	Sabal palm	Sabal palmetto	18	70			relocate	76	Sabal palm	Sabal palmetto	20	70			relocate	166	Live oak	Quercus virginiana	30	40		Co-canopy	remove
33	Mango	Mangifera indica	26	40			remove	77	Sabal palm	Sabal palmetto	20	70			relocate	167	Sabal palm	Sabal palmetto	20	40			relocate
34	Mango	Mangifera indica	26	40			remove	78	Sabal palm	Sabal palmetto	20	70			relocate	168	Rubber tree	Ficus elastica	100	45			relocate
35	Sabal palm	Sabal palmetto	21	70			remove	79	Sabal palm	Sabal palmetto	10	70			relocate	169	Rubber tree	Ficus elastica	100	45			relocate
36	Sabal palm	Sabal palmetto	12	70			relocate	80	Sabal palm	Sabal palmetto	24	70			relocate	170	Rubber tree	Ficus elastica	60	45			relocate
37	Strangler fig	Ficus aurea	24	60			relocate	81	Sabal palm	Sabal palmetto	24	60			relocate	171	Scapi	Rapanea arborea	6	60			relocate
38	Sabal palm	Sabal palmetto	23	70			relocate	82	Sabal palm	Sabal palmetto	20	70			relocate	172	Live oak	Quercus virginiana	30	40			relocate
39	Live oak	Quercus virginiana	24	60			remove	83	Sabal palm	Sabal palmetto	20	70			relocate	173	Sabal palm	Sabal palmetto	23	70		Cactus	relocate
40	Melaleuca	Melaleuca	34	60			remove	84	Sabal palm	Sabal palmetto	30	70			relocate	174	Sabal palm	Sabal palmetto	23	70			relocate
41	Java plum	Styzygium cuneatum	38	50			remove	85	Sabal palm	Sabal palmetto	30	70			relocate	175	Sabal palm	Sabal palmetto	25	70			relocate
42	Java plum	Styzygium cuneatum	44	60			remove	86	Sabal palm	Sabal palmetto	30	70			relocate	176	Mango	Mangifera indica	11	50		Co-canopy	relocate
43	Java plum	Styzygium cuneatum	44	60			remove	87	Sabal palm	Sabal palmetto	30	70			relocate	177	Mango	Mangifera indica	12	50		Co-canopy	relocate
44	Seagrape	Coccoloba uvifera	21	40			Co-canopy	88	Ficus	Ficus microcarpa	36	30			remove	178	Mango	Mangifera indica	11	40		Dead leader	remove
								89	Sabal palm	Sabal palmetto	18	70			remove	179	Quercus palm	Styzygium ramosissimum	11	70		Category 2 invasive	remove





dave bodker
landscape architecture/planning inc.
601 n. congress ave., suite 105-a
delray beach, florida 33445
561-276-6311
#LA0000999
sheet title:

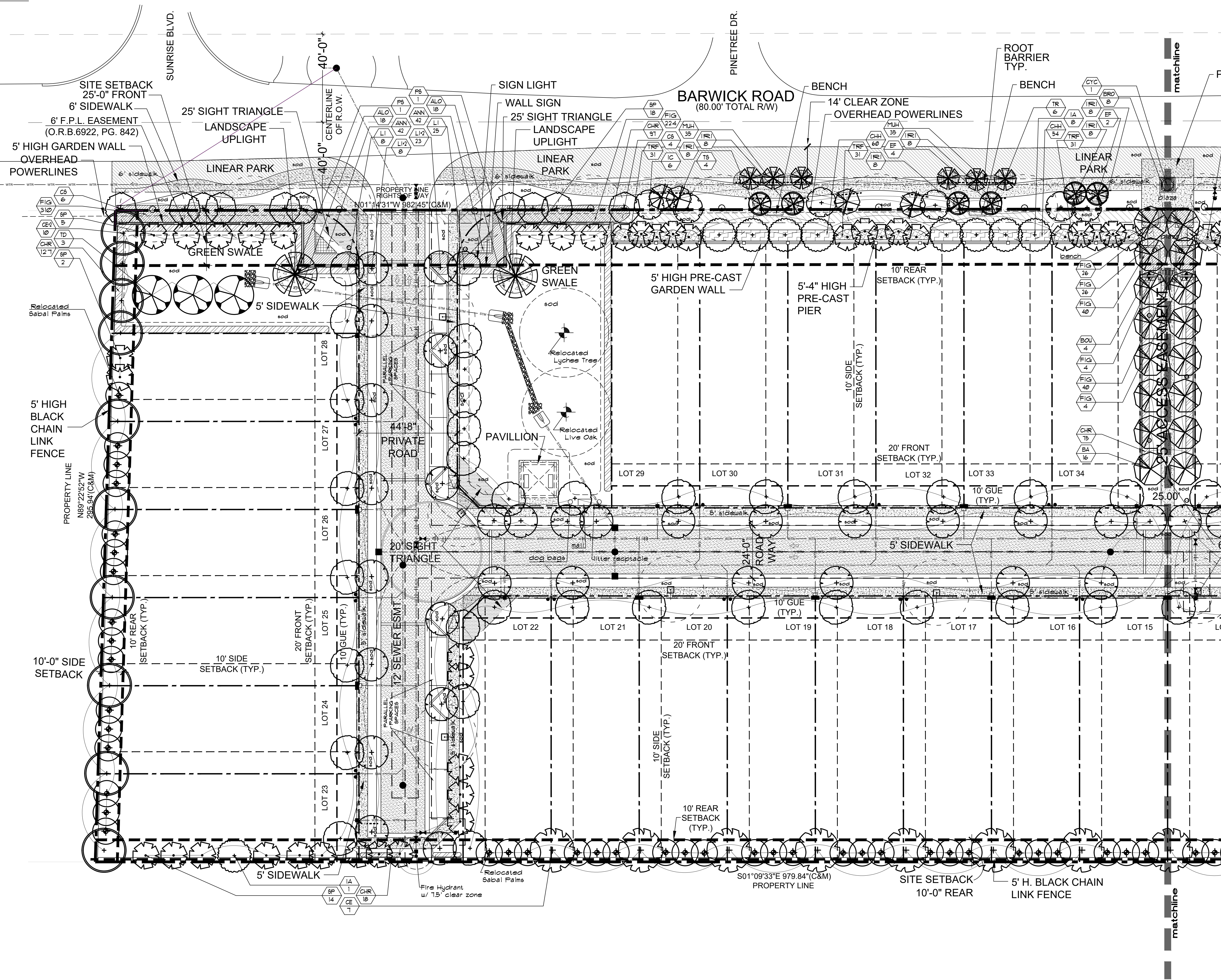
**existing tree
plan and list**

project number: 1319
date: 08/26/2020
scale: 1" = 20'
drawn by:

revisions:	
△	
△	
△	
△	
△	

sheet:

L-3



LEGEND

- NEW LOCATION OF RELOCATED TREES
- 15' RADIUS
- 15' RADIUS
- FIRE HYDRANT WITH 15' CLEAR ZONE INDICATED
- STREET LIGHT POLE WITH 15' CLEAR ZONE INDICATED
- SIDEWALKS
- DRIVEWAYS
- PRIVATE ROAD
- 5' HIGH GARDEN WALL
- 5' PRE-CAST PIER
- LIGHT BOLLARD FIXTURE

TOTAL PLANT LIST

SYM	BOTANICAL/COMMON NAME	SPECIFICATIONS	QTY	NATIVE
BA	Bulnesia arborea Verawood	12" Ht. x 6" spr. 2" cal.	16	Y
CE	Conocarpus erectus Green Buttonwood	12" Ht. x 5" spr. 2" cal.	24	Y
CE2	Conocarpus erectus Green Buttonwood	14" Ht. x 6" spr. 3" cal.	10	Y
CS	Conocarpus erectus 'Sericeus' Silver Buttonwood	12" Ht. x 5" spr. multi-trk	22	Y
EF	Eugenia foetida Spanish Shoppier	12" Ht. x 5" spr. 2" cal.	12	Y
IA	Ilex attenuata East Palatka Holly	12" Ht. x 5" spr. 2" cal.	18	Y
IC	Ilex cassine Dahoon Holly	12" Ht. x 5" spr. 2" cal.	12	Y
LI	Lagerstroemia indica Crape Myrtle	12" Ht. x 5" spr. multi-trk	65	N
LI2	Lagerstroemia indica Crape Myrtle	14" Ht. x 6" spr. 3" cal, 6" ct. min.	60	N
PS	Phoenix sylvestris Sylvestra Palm	10" ct. matched	4	N
SP	Sabal palmetto Sabal Palm	12" - 18" Ht. 8" ct. min. staggered heights	81	Y
TD	Taxodium distichum Bald Cypress	12" Ht. x 5" spr. 2" cal.	3	Y
TR	Trinax radiata Thatch Palm	12" Ht. o.c.	12	Y
TS	Tacoma stans Yellow Elder	12" Ht. x 5" spr. 2" cal.	8	Y
ALO	Alcaesia Elephant Ear	24" Ht. x 24" spr. 36" o.c.	12	N
ANN	Annalis to be selected by Landscape Architect	6" pots 12" o.c.	168	N
BOU	Bougainvillea spp. Bougainvillea	12" Ht. x 12" spr. 18" o.c.	4	N
BRO	Bromelad 'perfecta' perfecta Bromelad	10" Ht. x 10" spr. 18" o.c.	8	N
CHH	Chrysobalanus icaco Green Cocoplum	18" Ht. x 18" spr. 24" o.c.	230	Y
CHR	Chrysobalanus icaco Red Tip Cocoplum	24" Ht. x 24" spr. 24" o.c.	570	Y
CYC	Cycas revoluta King Sago	5" Ht. x 5" spr.	1	N
FIG	Ficus microcarpa Green Island	12" Ht. x 12" spr. 18" o.c.	1248	N
IRI	Iris spp. Blue Flag Iris	18" Ht. x 12" spr. 18" o.c.	96	Y
MUH	Muhlenbergia capillaris Munly Grass	18" Ht. x 18" spr. 30" o.c.	140	Y
TRF	Tripsacum floridanum Dwarf Fakahatchee Grass	18" Ht. x 18" spr. 30" o.c.	186	Y
SOD	Stenotaphrum secundatum St. Augustine Sod	full, fresh sod	as req.	
	Existing tree relocated from site		5	
	36" depth root barrier		as req.	

CODE DATA

STREET TREES
1 tree / 40' LT.
240/140

60 trees required
60 provided

NOTE: SEE SHEET L-6 FOR TYPICAL UNIT PLANTING PLANS

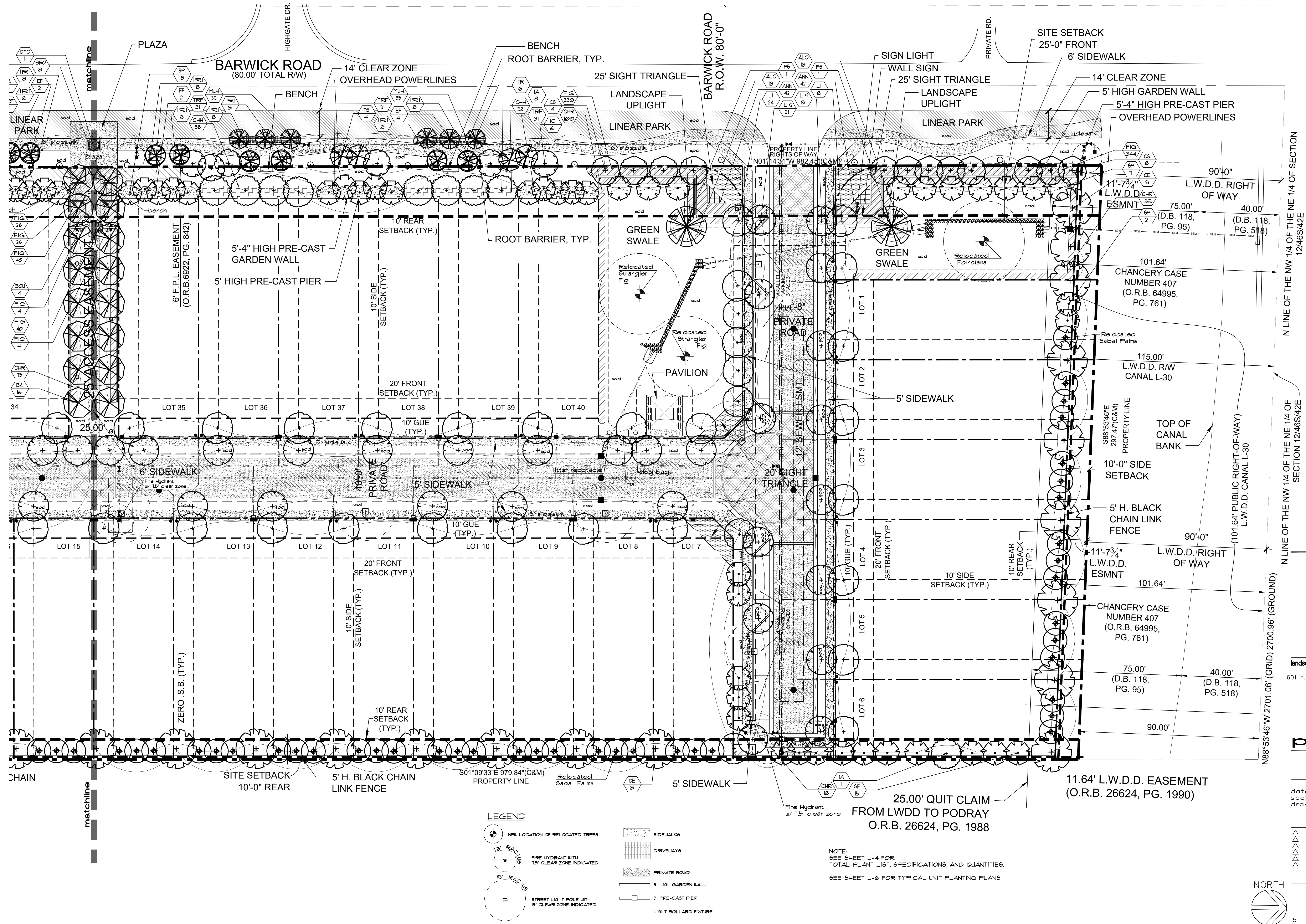
banyan court
delray beach, fl

dave bodker
landscape architecture/planning inc.
601 n. congress ave., suite 105-a
delray beach, florida 33445
561-276-6311
#LA0000999
sheet title:

planting plan
project number:
1319
date: 08/26/2020
scale: 1" = 20'
drawn by: st

revisions:

sheet:
L-4
4 of 6 sheets



**banyan
court**
delray beach, fl

dave bodker
landscape architecture/planning inc.
601 n. congress ave., suite 105-a
delray beach, florida 33445
561-276-6311

#LA0000999

sheet title:

**planting
plan**

project number:

1319

date:

08/26/2020

scale:

1" = 20'

drawn by:

st

revisions:

sheet:

L-5

5 of 6 sheets

<p>A. These Specifications and the requirements hereinafter shall govern the project during the installation, guarantee and maintenance period.</p> <p>B. Scope of Work:</p> <p>(1) The work specified by this Section of the Specifications and the Plans consists of furnishing all labor, materials, equipment, apparatus, means of transportation, supplies, equipment, materials, services and incidentals necessary to complete the work as indicated on the Plans and the Specifications, as well as all other related responsibilities, including all change and repairs incident thereto.</p> <p>(2) The work shall include, but not be limited to, furnishing material, root pruning where required, layout, protection to the public, excavation, installation, backfilling, grading, fertilizing, mulching, staking and guying where required, watering, pruning where required, soil restoration, weeding, cleanup, maintenance and guarantee.</p> <p>(3) Quantities and Location: The Landscape Architect reserves the right to adjust the numbers and locations of the designated types and species to be used at any of the locations shown in order to provide for any modifications upon which he may be necessary.</p> <p>(4) Investigation of Subsurface Condition: The Contractor will be responsible for making site subsurface investigations and examination as he or she chooses in order to become familiar with the character of the existing natural and man-made construction conditions under which he or she will work. These subsurface investigations and examinations shall be included in the bid. The Contractor shall not receive separate, additional compensation for this.</p> <p>(5) The Landscape Contractor shall be paid for only those units that are installed at the time of need for payment. The contractor unit prices shall be the basis for final payment. The final amount of payment may or may not be the total unit price of the contract depending on the number of units installed.</p> <p>(6) Ten percent (10%) of the total contract price will be held as retention for 90 days after final unit acceptance.</p> <p>(7) The Landscape Contractor will coordinate his work with all other trades at the job site.</p>	<p>C. Delivery and Handling:</p> <p>(1) Movement of nursery stock shall comply with all Federal, State and local laws, regulations, ordinances, codes, etc.</p> <p>(2) Protect during delivery to prevent damage to root ball or desiccation of leaves. Remove unacceptable plant material immediately at any time during the job site. Material and surplus stock stored at the site.</p> <p>(3) Transport materials on vehicles large enough to allow plants not to be crushed and damaged. Plants shall be covered to prevent wind damage during transit.</p> <p>D. Soil:</p> <p>(1) Deliver seed on pallets with root bags protected from exposure to wind and sun. Deliver seed in quantities capable of being installed within 48 hours of cutting.</p> <p>Submittals & Approvals</p> <p>(1) Written request for approval to substitute a plant species or a plants designation (B&B, U&B, GQ, etc.) type, grade, quality, size, quantity, etc. of a material is not acceptable. The Contractor shall be responsible for the quality of the material specified on the project.</p> <p>(2) The Contractor will comply with applicable Florida, State, County and local requirements governing landscape materials and work.</p> <p>C. Grade Standards:</p> <p>(1) Plant material shall be Florida #1 or better as set forth in the latest edition of the Florida Department of Agriculture's Grading and Standards for Nursery Plants.</p> <p>(2) All plant material will be subject to the approval of the Landscape Architect for quality, size and color. Plants lacking the completeness or proper proportions, plants which are weak or thin, and plants having any disease, injury, or other defects, shall not be accepted. The final amount of payment may or may not be the total unit price of the contract depending on the number of units installed.</p> <p>(3) To reduce head loss, plants shall be kept trimmed to not more than one-third.</p> <p>(4) Plants with mechanical damage, such as from cables, chains, equipment and nails, shall be rejected.</p> <p>Hydro:</p> <p>(1) Chlorine: The allowable level of Chlorine in foliage shall be set forth in the latest edition of the Florida Department of Agriculture's Grading and Standards for Nursery Plants.</p> <p>(2) Plant material shall not be accepted when the ball of earth surrounding its roots has been cracked, broken or otherwise damaged.</p> <p>(3) Root pruning of plant material when necessary, shall be done a minimum of 4 weeks, or for a period of 12 months, by the Landscape Architect, prior to planting at the project.</p> <p>Soil:</p> <p>(1) Soil shall be solid soil and shall be standard quality grade. Note: Quality grade shall be based on the standards of soil quality grades (prime, standard or commercial) as established by the Turf Grass Growers Association of Florida Inc. The soil shall be well settled with roots and of firm loam texture having a compact top growth and heavy root development. Soil shall be free of objectionable grasses and broad leaf weeds. Soil shall not accept if it contains Bermuda Grass. Soil sections shall be strong enough to support when suspended vertically from a firm grasp on the upper 18" of the section. Soil shall not be tamped or tampered when moisture content (excessively dry or wet) may adversely affect its survival. Soil shall be relatively free from topsoil up to one half inch allowable (uncompressed). The soil embedded in the soil shall be clean, earth free of stones and debris. The soil shall have been moved at least three times with a soil mixer with final mixing not less than seven days prior to the soil being in place. The soil shall be provided in commercial paid sizes measuring not less than 24 inches and shall be laid from the top of the unpaved at the time of placement. It shall be placed within 48 hours after being cut and it shall be stacked and kept moist from the time it is cut until it is placed.</p>	<p>D. Measurement of Trees, Palms, Shrubs, and Groundcovers:</p> <p>(1) Trees, Shrubs, and Groundcover:</p> <p>a. Rootball: Requirements for the measurement of minimum rootball diameter and depth shall comply with the Florida Department of Agriculture's "Grades and Standards for Nursery Plants, Part I and Part 2" as follows:</p> <table border="1"> <thead> <tr> <th>CALIPER</th> <th>MIN. BALL DIA.</th> <th>MIN. BALL DEPTH</th> </tr> </thead> <tbody> <tr> <td>1" - 15"</td> <td>16"</td> <td>75% of dia.</td> </tr> <tr> <td>15" - 21"</td> <td>22"</td> <td>65% of dia.</td> </tr> <tr> <td>21" - 25"</td> <td>28"</td> <td>65% of dia.</td> </tr> <tr> <td>25" - 35"</td> <td>34"</td> <td>65% of dia.</td> </tr> <tr> <td>35" - 45"</td> <td>40"</td> <td>65% of dia.</td> </tr> <tr> <td>45" - 55"</td> <td>46"</td> <td>65% of dia.</td> </tr> <tr> <td>55" or more</td> <td>52"</td> <td>65% of dia.</td> </tr> </tbody> </table> <p>b. Height: The height of plant material shall be measured from final grade and continue up to unweeded crown of the plant. The plant material shall not be intended to include any sprouts or isolated branches. The plant material shall not be intended to include any sprouts or isolated branches, limbs or fronds, which extend out beyond the main mass of the plant.</p> <p>c. Die-Back and Leaf Drop: Plant material showing signs of die-back of leaf-drop or other damage shall be rejected from the project. Immediately if die back is detected by the Landscape Architect. Therefore, any plant material with undesirable die-back or leaf-drop or other damage shall be rejected from the project. The plant material shall be rejected from the project. The plant material shall be rejected from the project. The plant material shall be rejected from the project.</p> <p>(2) Mechanical Destruction of Foliage: Mechanical destruction of foliage resulting from root pruning shall not affect more than 10% of the total foliage prior to the time of planting. Loss of foliage caused by seasonal change will be accepted.</p> <p>(3) Spanish Moss: Spanish Moss (Tillandsia usneoides) exists on plant material shall be completely removed prior to planting on the project.</p> <p>(4) Palms:</p> <p>(1) Remove a minimum of fronds from the crown of the palms to facilitate transporting and handling.</p> <p>(2) Placing Beds:</p> <p>a. Place soil with staggered joints closely butted, tapered or rolled to an even surface to the required finished grade. Avoid continuous seams along lines of water flow in basins. Place soil in rows at right angles to slope.</p> <p>b. Water soil every day for a period of three weeks.</p> <p>c. Fertilize soil three weeks after planting with 2 pounds of 8-8-8 fertilizer per 1000 sq. ft.</p> <p>d. No soil shall be used which is not certified as being free of the imported rat. Before any soil is brought to the site, furnish a written certification of clearance from pest control officials of either State or Federal Department of Agriculture.</p> <p>(3) Maintenance of Beds:</p> <p>a. It shall be the responsibility of the Contractor to replace any areas of sod that are not in healthy growing condition. If there is one to be replaced, it shall be replaced by the Contractor.</p> <p>b. The Contractor shall completely maintain the sod until final acceptance by the Contractor or by the owner.</p> <p>(4) Planting Beds:</p> <p>(1) Spread six inches of loess soil mixture uniformly over the entire planting area.</p> <p>(2) Spread 50% organic fertilizer at a rate of 4 pounds per 1000 sq. ft. uniformly over the groundcover area.</p> <p>(3) Rake soil to finish grade before adding two inches mulch.</p> <p>(4) Thoroughly water and firm the plants into the soil mixture.</p> <p>(5) Areas to be mulched shall have existing weeds and vegetation removed, including root systems, before applying mulch.</p> <p>(6) Grades are to be uniform. Grade areas which are rough and uneven, fill in voids and holes with planting soil or other approved fill material.</p>	CALIPER	MIN. BALL DIA.	MIN. BALL DEPTH	1" - 15"	16"	75% of dia.	15" - 21"	22"	65% of dia.	21" - 25"	28"	65% of dia.	25" - 35"	34"	65% of dia.	35" - 45"	40"	65% of dia.	45" - 55"	46"	65% of dia.	55" or more	52"	65% of dia.
CALIPER	MIN. BALL DIA.	MIN. BALL DEPTH																								
1" - 15"	16"	75% of dia.																								
15" - 21"	22"	65% of dia.																								
21" - 25"	28"	65% of dia.																								
25" - 35"	34"	65% of dia.																								
35" - 45"	40"	65% of dia.																								
45" - 55"	46"	65% of dia.																								
55" or more	52"	65% of dia.																								
<p>1. Removal of Plant Material:</p> <p>(1) All plant material to be removed shall be removed completely including the rootball, from the job site as directed by the Landscape Architect. The remaining hole shall be filled with suitable material or planting soil as directed by the Landscape Architect.</p> <p>2. Existing Plant Material to be Relocated:</p> <p>(1) All existing plant material to be relocated shall be relocated by the Landscape Architect prior to the installation of the project.</p> <p>(2) Rootball: Requirements for the measurement of minimum rootball diameter and depth shall comply with the Florida Department of Agriculture's "Grades and Standards for Nursery Plants, Part I and Part 2" as follows:</p> <table border="1"> <thead> <tr> <th>CALIPER</th> <th>MIN. BALL DIA.</th> <th>MIN. BALL DEPTH</th> </tr> </thead> <tbody> <tr> <td>1" - 15"</td> <td>16"</td> <td>75% of dia.</td> </tr> <tr> <td>15" - 21"</td> <td>22"</td> <td>65% of dia.</td> </tr> <tr> <td>21" - 25"</td> <td>28"</td> <td>65% of dia.</td> </tr> <tr> <td>25" - 35"</td> <td>34"</td> <td>65% of dia.</td> </tr> <tr> <td>35" - 45"</td> <td>40"</td> <td>65% of dia.</td> </tr> <tr> <td>45" - 55"</td> <td>46"</td> <td>65% of dia.</td> </tr> <tr> <td>55" or more</td> <td>52"</td> <td>65% of dia.</td> </tr> </tbody> </table> <p>(3) Root pruning shall be accomplished by digging a trench completely around the plant about 18" for a period as determined by the Landscape Architect. All exposed roots shall be cut off smoothly.</p> <p>(4) A mixture of good organic fertilizer and planting soil shall be used to refill the trench.</p> <p>(5) Plant material which is a soil of a loose texture, which does not readily adhere to the root system, especially in the case of large plants or trees, shall be rejected from the project. The plant material which is rejected by the Landscape Architect, for any reason, shall be used and it will be placed around the rootball or around the plant material which is rejected from the project. The plant material which is rejected from the project shall be used and it will be placed around the rootball or around the plant material which is rejected from the project. The plant material which is rejected from the project shall be used and it will be placed around the rootball or around the plant material which is rejected from the project.</p>	CALIPER	MIN. BALL DIA.	MIN. BALL DEPTH	1" - 15"	16"	75% of dia.	15" - 21"	22"	65% of dia.	21" - 25"	28"	65% of dia.	25" - 35"	34"	65% of dia.	35" - 45"	40"	65% of dia.	45" - 55"	46"	65% of dia.	55" or more	52"	65% of dia.	<p>2. Disposal of Trees: All debris and other objectionable material created through planting operation and landscape construction shall be removed completely on a daily basis from the job site as directed by the Landscape Architect. Any paved areas including curbs and sidewalks which have been stream with soil, sod, silt, fertilizer or other debris shall be thoroughly swept.</p> <p>3. Excise All: All excise fill shall result from the installation of the project shall result from the installation of the project shall result from the installation of the project. The Contractor shall be responsible for the quality of the material specified on the project.</p> <p>(1) Maintenance shall begin immediately after each plant is planted and continue until final acceptance.</p> <p>(2) Plant maintenance shall include watering, weeding, pruning, weeding, cultivation, risk of dead plants, replacement of soil and other work as directed by the Landscape Architect.</p> <p>(3) Survival and Condition: The Contractor shall be responsible for the proper maintenance and the survival and condition of all plants installed on the project.</p> <p>(4) Replacement: Replacement of plant material shall be the responsibility of the Contractor including the possible replacement of soil and other work as directed by the Landscape Architect.</p> <p>(5) All plant material shall be installed on a week in the event that plants or other undesirable vegetation becomes prevalent to such an extent that they threaten plant material, the work shall be removed as directed by the Landscape Architect. If necessary, the plant material, mulch and soil shall be removed and replaced with the same material as directed by the Landscape Architect. If necessary, the plant material, mulch and soil shall be removed and replaced with the same material as directed by the Landscape Architect.</p>	<p>3. Completion of the work shall mean the full and exact completion and conformity with the provisions expressed or implied in the Plans and Specifications including any and all "punch lists" which may be issued containing certain items of work which have been found unsatisfactory or required completion or corrective action.</p> <p>4. Final acceptance shall not be given until all construction provided for and contemplated by the contract is completed and found to be completed in accordance with contract Plans and Specifications.</p> <p>5. Final acceptance shall not be official until acknowledged in writing by the Owner or their representative.</p> <p>6. The guarantee shall begin upon the day final acceptance is given.</p> <p>7. The Contractor is responsible for the entire project prior to written acceptance.</p> <p>8. The Contractor is responsible for the entire project prior to written acceptance.</p> <p>9. The Contractor is responsible for the entire project prior to written acceptance.</p> <p>10. The Contractor is responsible for the entire project prior to written acceptance.</p> <p>11. The Contractor is responsible for the entire project prior to written acceptance.</p> <p>12. The Contractor is responsible for the entire project prior to written acceptance.</p> <p>13. The Contractor is responsible for the entire project prior to written acceptance.</p> <p>14. The Contractor is responsible for the entire project prior to written acceptance.</p> <p>15. The Contractor is responsible for the entire project prior to written acceptance.</p> <p>16. The Contractor is responsible for the entire project prior to written acceptance.</p> <p>17. The Contractor is responsible for the entire project prior to written acceptance.</p> <p>18. The Contractor is</p>
CALIPER	MIN. BALL DIA.	MIN. BALL DEPTH																								
1" - 15"	16"	75% of dia.																								
15" - 21"	22"	65% of dia.																								
21" - 25"	28"	65% of dia.																								
25" - 35"	34"	65% of dia.																								
35" - 45"	40"	65% of dia.																								
45" - 55"	46"	65% of dia.																								
55" or more	52"	65% of dia.																								