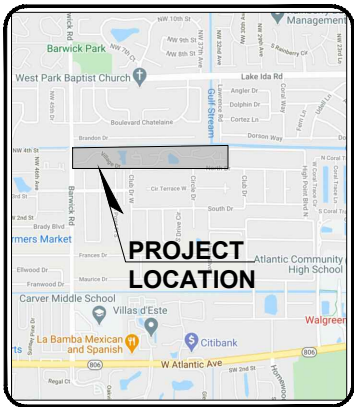


CHATEAU WOOD
3640 VILLAGE DRIVE
DELRAY BEACH, FLORIDA

PREPARED FOR
THE CITY OF DELRAY BEACH

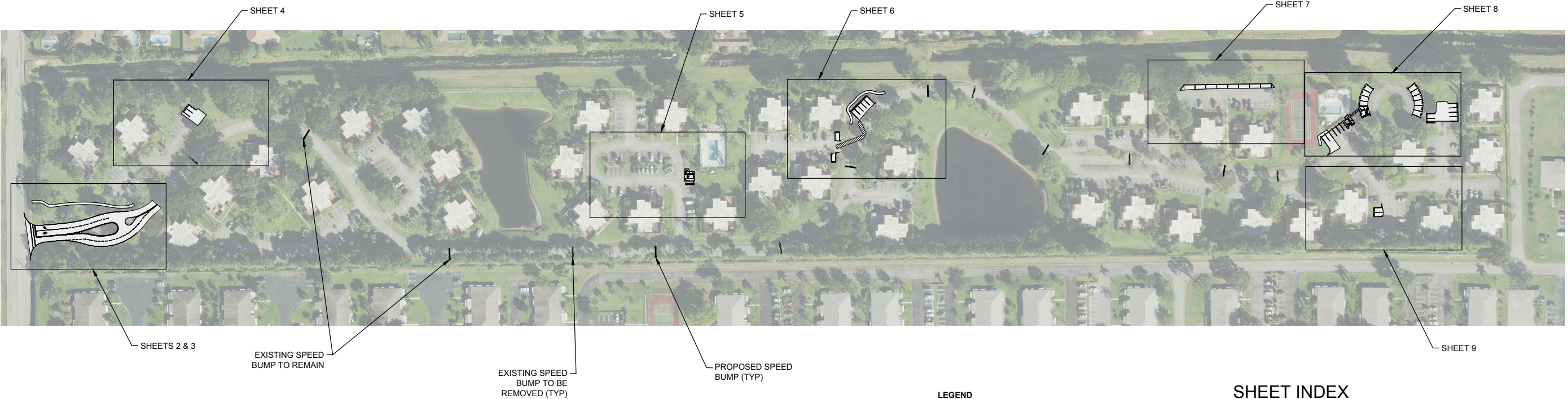
OCTOBER 1, 2020



LOCATION MAP
N.T.S.



GRAPHIC SCALE
0 100' 150' 200'
SCALE: 1" = 100'



OPEN SPACE AREA CHART

EXISTING OPEN SPACE	11.83 AC
PROPOSED OPEN SPACE	11.57 AC
TOTAL SITE AREA	24.70 AC

PARKING CALCULATIONS PER DELRAY LDC

148 DWELLING UNITS (ALL ASSUMED TO BE 2+ BEDROOM)

RESIDENT STALLS	GUEST STALLS		NUMBER OF STALLS (SUBTOTAL)
2 STALLS/UNIT	UNITS 1-20	0.5 STALLS/UNIT	10
	UNITS 21-50	0.3 STALLS/UNIT	9
	UNITS 50-148	0.2 STALLS/UNIT	19.6

TOTAL	296	39
-------	-----	----

PARKING DATA CHART

	RESIDENT STALLS	GUEST STALLS	ACCESSIBLE STALLS	TOTAL STALLS
REQUIRED PER DELRAY LDC AND FLORIDA BUILDING CODE	296	39	2	337
EXISTING	296	41	0	337
PROPOSED ADDITIONS	0	29	3	32
PROPOSED SUBTOTALS	296	70	3	369

LEGEND

	PROPOSED ASPHALT
	PROPOSED ASPHALT REPAIR
	PROPOSED CONCRETE

GENERAL NOTES

- ALL EXISTING SPEED BUMPS TO BE REPLACED UNLESS OTHERWISE NOTED. REFER TO CITY OF DELRAY BEACH DETAIL RT 3.5C ON SHEET 10.
- ALL PAVEMENT TO BE MILLED AND RESURFACED.
- ALL EXISTING WHEEL STOPS TO BE PRESSURE WASHED, REPAINTED AND REUSED IF IN ACCEPTABLE CONDITION. ONLY REPLACE DAMAGED WHEEL STOPS.
- ALL STRIPING MUST COMPLY WITH THE CITY OF DELRAY BEACH STANDARD DETAILS.
- ALL STRIPING TO MATCH EXISTING UNLESS OTHERWISE NOTED OR IS NONCOMPLIANT WITH CURRENT CITY STANDARD DETAILS.
- ANY TREES OR SHRUBS PLACED WITHIN WATER, SEWER, OR DRAINAGE EASEMENTS SHALL CONFORM TO THE CITY OF DELRAY BEACH STANDARD DETAILS; LD 1.1 & LD 1.2
- ALL ELEVATIONS ARE REFERENCED TO THE 1988 NORTH AMERICAN VERTICAL DATUM (NAVD)
- TREE SIZE AND SPECIES AS INDICATED IN THE LANDSCAPE MODIFICATION PLANS BY GENTILE, GLAS, HOLLOWAY, O'MAHONEY AND ASSOCIATES, INC. SHALL SUPERSEDE THE SURVEY BASE IN THE EVENT OF A CONFLICT OF INFORMATION.

SHEET INDEX

SHEET NO.	SHEET TITLE
1	SITE PLAN AND KEY SHEET
2	ENTRANCE DEMOLITION PLAN
3	PAVING, GRADING, AND DRAINAGE PLAN
4	PAVING, GRADING, AND DRAINAGE PLAN
5	PAVING, GRADING, AND DRAINAGE PLAN
6	PAVING, GRADING, AND DRAINAGE PLAN
7	PAVING, GRADING, AND DRAINAGE PLAN
8	PAVING, GRADING, AND DRAINAGE PLAN
9	PAVING, GRADING, AND DRAINAGE PLAN
10	DETAILS
11	DETAILS
12	NOTES

TOTAL NUMBER OF SHEETS - 12



ADAM C. SWANEY, P.E., PROFESSIONAL ENGINEER LICENSE NO. 72235.
THIS DOCUMENT HAS BEEN ELECTRONICALLY SIGNED AND
SEALED BY ADAM C. SWANEY, P.E. USING A SHA-1 AUTHENTICATION CODE.
PRINTED COPIES OF THIS DOCUMENT ARE NOT CONSIDERED SIGNED AND
SEALED AND THE SHA-1 AUTHENTICATION CODE MUST BE VERIFIED ON ANY
ELECTRONIC COPIES.

REVISIONS	NO.	DATE	REMARKS	BY

©COPYRIGHT 2020 BY
ENGINEERING GROUP, INC.
THIS DOCUMENT IS PROVIDED FOR
INFORMATIONAL PURPOSES ONLY.
UNLESS SIGNED AND SEALED BY
A LICENSED PROFESSIONAL
ENGINEER, IT IS NOT TO BE
USED FOR ANY OTHER PURPOSES.
ENGINEERING GROUP, INC.

ADAM C. SWANEY, P.E.
NO. 72235

CHATEAU WOOD
3640 VILLAGE DRIVE
DELRAY BEACH, FLORIDA
SITE PLAN AND KEY SHEET



1300 N. CONGRESS AVE., SUITE 101
WEST PALM BEACH, FLORIDA 33409
PH: (561) 655-1151 • FAX: (561) 632-9390
WWW.ENGUNITYGROUP.COM CERTIFICATE OF AUTHORIZATION #7095

DATE	DRAWN	PROJECT ENGINEER	PROJECT MANAGER	CHECKED	JOB NO.
10/1/2020	KAK	KAK	ACS	KBJ	19158.01

LEGEND - EXISTING

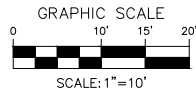
MEASURED ELEVATION	FPL	FLORIDA POWER & LIGHT	WATER METER
CONCRETE	CONCRETE	NUMBER OF PARKING SPACES	FIRE HYDRANT
CENTERLINE	CENTERLINE	INFORMATION SIGN (DOUBLE POST)	WATER VALVE
PVC	PLASTIC PIPE	INFORMATION SIGN (SINGLE POST)	GUY WIRE
CMP	CORRUGATED METAL PIPE	METAL FENCE	UTILITY POLE
RCP	REINFORCED CONCRETE PIPE	TEMPORARY BENCHMARK	CONCRETE POWER POLE
ELEV.	ELEVATION	IRRIGATION CONTROL VALVE	OVERHEAD ELECTRIC
INV.	INVERT	LIGHT POLE	UNDERGROUND STORM
TELE	TELEPHONE	CATCH BASIN	PINE TREE AND SIZE

LEGEND - PROPOSED

COMPLETE ASPHALT REMOVAL
PARTIAL ASPHALT REMOVAL

NOTES

- WHERE PARTIAL ASPHALT REMOVAL IS INDICATED, BASE AND SUBGRADE TO REMAIN AND TO BE COMPACTED TO AASHTO T-180 STANDARDS.
- COMPLETE ASPHALT REMOVAL SHALL INCLUDE REMOVAL OF BASEROCK.



REVISIONS	NO.	DATE	REMARKS	BY

©COPYRIGHT 2020 BY
ADAM C. SWANEY, P.E.
THIS DRAWING IS PROVIDED FOR
INFORMATIONAL PURPOSES ONLY.
UNLESS SIGNED AND SEALED BY
A LICENSED PROFESSIONAL
ENGINEER, IT IS NOT TO BE
USED FOR ANY OTHER
ENGINEERING GROUP, INC.

ADAM C. SWANEY, P.E.
NO. 72235

CHATEAU WOOD
3640 VILLAGE DRIVE
DELRAY BEACH, FLORIDA
ENTRANCE DEMOLITION PLAN

A Higher Standard of Excellence
engenuity
group inc.
ENGINEERS • SURVEYORS • DESIGN-BUILDERS • ASBESTOS REMEDIATION
1395 N. CONGRESS AVE., SUITE 101
WEST PALM BEACH, FLORIDA 33409
PH: (561) 655-1151 • FAX: (561) 652-9390
WWW.ENGUNITYGROUP.COM CERTIFICATE OF AUTHORIZATION #7095

DATE	10/1/2020	DATE	10/1/2020
DRAWN	KAK	PROJECT	KAK
PROJECT	KAK	ENGINEER	KAK
PROJECT	KAK	MANAGER	ACS
CHECKED	KBJ	CHECKED	KBJ
JOB NO.	19158.01	JOB NO.	19158.01



ADAM C. SWANEY, P.E., PROFESSIONAL ENGINEER LICENSE NO. 72235.
THIS DOCUMENT HAS BEEN ELECTRONICALLY SIGNED AND
SEALED BY ADAM C. SWANEY, P.E. USING A SHA-1 AUTHENTICATION CODE.
PRINTED COPIES OF THIS DOCUMENT ARE NOT CONSIDERED SIGNED AND
SEALED AND THE SHA-1 AUTHENTICATION CODE MUST BE VERIFIED ON ANY
ELECTRONIC COPIES.

HALF SIZE PRINT - NOT TO SCALE

LEGEND - EXISTING

MEASURED ELEVATION	FPL	FLORIDA POWER & LIGHT
CONCRETE	NUMBER OF PARKING SPACES	INFORMATION SIGN (DOUBLE POST)
CENTERLINE	INFORMATION SIGN (SINGLE POST)	METAL FENCE
PVC	PLASTIC PIPE	TEMPORARY BENCHMARK
CMP	CORRUGATED METAL PIPE	IRRIGATION CONTROL VALVE
RCP	REINFORCED CONCRETE PIPE	LIGHT POLE
ELEV.	ELEVATION	CATCH BASIN
INV.	INVERT	
TELE	TELEPHONE	

WATER METER	6" QUEEN PALM AND SIZE
FIRE HYDRANT	6" OAK TREE AND SIZE
WATER VALVE	6" CABBAGE PALM AND SIZE
GUY WIRE	6" PONTIAC PALM AND SIZE
UTILITY POLE	EXISTING DRAINAGE FLOW DIRECTION
CONCRETE POWER POLE	
OVERHEAD ELECTRIC	
UNDERGROUND STORM	
PINE TREE AND SIZE	

LEGEND - PROPOSED

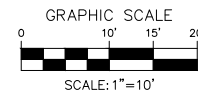
ASPHALT
CONCRETE
5' HIGH METAL FENCE
FINISHED GRADE ELEVATION
DRAINAGE FLOW DIRECTION

GENERAL NOTES

- ALL EXISTING SPEED BUMPS TO BE REPLACED UNLESS OTHERWISE NOTED. REFER TO CITY OF DELRAY BEACH DETAIL RT 3.5C ON SHEET 10.
- ALL PAVEMENT TO BE MILLED AND RESURFACED.
- ALL EXISTING WHEEL STOPS TO BE PRESSURE WASHED, REPAINTED AND REUSED IF IN ACCEPTABLE CONDITION. ONLY REPLACE DAMAGED WHEEL STOPS.
- ALL STRIPING MUST COMPLY WITH THE CITY OF DELRAY BEACH STANDARD DETAILS.
- ALL STRIPING TO MATCH EXISTING UNLESS OTHERWISE NOTED OR IS NONCOMPLIANT WITH CURRENT CITY STANDARD DETAILS.
- ANY TREES OR SHRUBS PLACED WITHIN WATER, SEWER, OR DRAINAGE EASEMENTS SHALL CONFORM TO THE CITY OF DELRAY BEACH STANDARD DETAILS; LD 1.1 & LD 1.2
- ALL ELEVATIONS ARE REFERENCED TO THE 1988 NORTH AMERICAN VERTICAL DATUM (NAVD)

STRIPING KEY

DESIGNATION	COLOR	LINETYPE	SIZE
A	WHITE	SOLID	6"
C	WHITE	SOLID	12"
E	WHITE	SOLID	24"
G	WHITE	SKIP (6" - 10')	6"
K	YELLOW	DOUBLE	6"



REVISIONS

NO. DATE

REMARKS

BY

©COPYRIGHT 2020 BY
THIS DRAWING IS PROVIDED FOR
INFORMATIONAL PURPOSES ONLY.
UNLESS SIGNED AND SEALED BY
A LICENSED PROFESSIONAL
ENGINEER, IT IS NOT TO BE
USED FOR CONSTRUCTION.
ADAM C. SWANEY, P.E.
NO. 72235

CHATEAU WOOD
3640 VILLAGE DRIVE
DELRAY BEACH, FLORIDA
PAVING, GRADING, AND DRAINAGE PLAN

A Higher Standard of Excellence
engenuity group inc.
ENGINEERS • LANDSCAPE ARCHITECTS • DESIGN BUILDERS
1900 N. CONGRESS AVE., SUITE 101
WEST PALM BEACH, FLORIDA 33409
PH: (561) 655-1151 • FAX: (561) 652-9390
WWW.ENGUGROUP.COM CERTIFICATE OF AUTHORIZATION #7095

DATE	DRAWN	CHECKED	DATE	PROJECT	MANAGER	CHECKED
10/11/2020	KAK	KAK	10/11/2020	3	12	
JOB NO.	19158.01					



ADAM C. SWANEY, P.E., PROFESSIONAL ENGINEER LICENSE NO. 72235.
THIS DOCUMENT HAS BEEN ELECTRONICALLY SIGNED AND
SEALED BY ADAM C. SWANEY, P.E. USING A SHA-1 AUTHENTICATION CODE.
PRINTED COPIES OF THIS DOCUMENT ARE NOT CONSIDERED SIGNED AND
SEALED AND THE SHA-1 AUTHENTICATION CODE MUST BE VERIFIED ON ANY
ELECTRONIC COPIES.

HALF SIZE PRINT - NOT TO SCALE

LEGEND - EXISTING

MEASURED ELEVATION	FPL	FLORIDA POWER & LIGHT	WATER METER	6"	QUEEN PALM AND SIZE
CONCRETE	NUMBER OF PARKING SPACES		FIRE HYDRANT	6"	OAK TREE AND SIZE
CENTERLINE	INFORMATION SIGN (DOUBLE POST)		WATER VALVE	6"	CABBAGE PALM AND SIZE
PVC	INFORMATION SIGN (SINGLE POST)		GUY WIRE	6"	PONTAIL PALM AND SIZE
CMP	METAL FENCE		UTILITY POLE		EXISTING DRAINAGE FLOW DIRECTION
RCP	TEMPORARY BENCHMARK		CONCRETE POWER POLE		
ELEV.	IRRIGATION CONTROL VALVE		OVERHEAD ELECTRIC		
INV.	LIGHT POLE		UNDERGROUND STORM		
TELE	CATCH BASIN		PINE TREE AND SIZE		

LEGEND - DEMOLITION

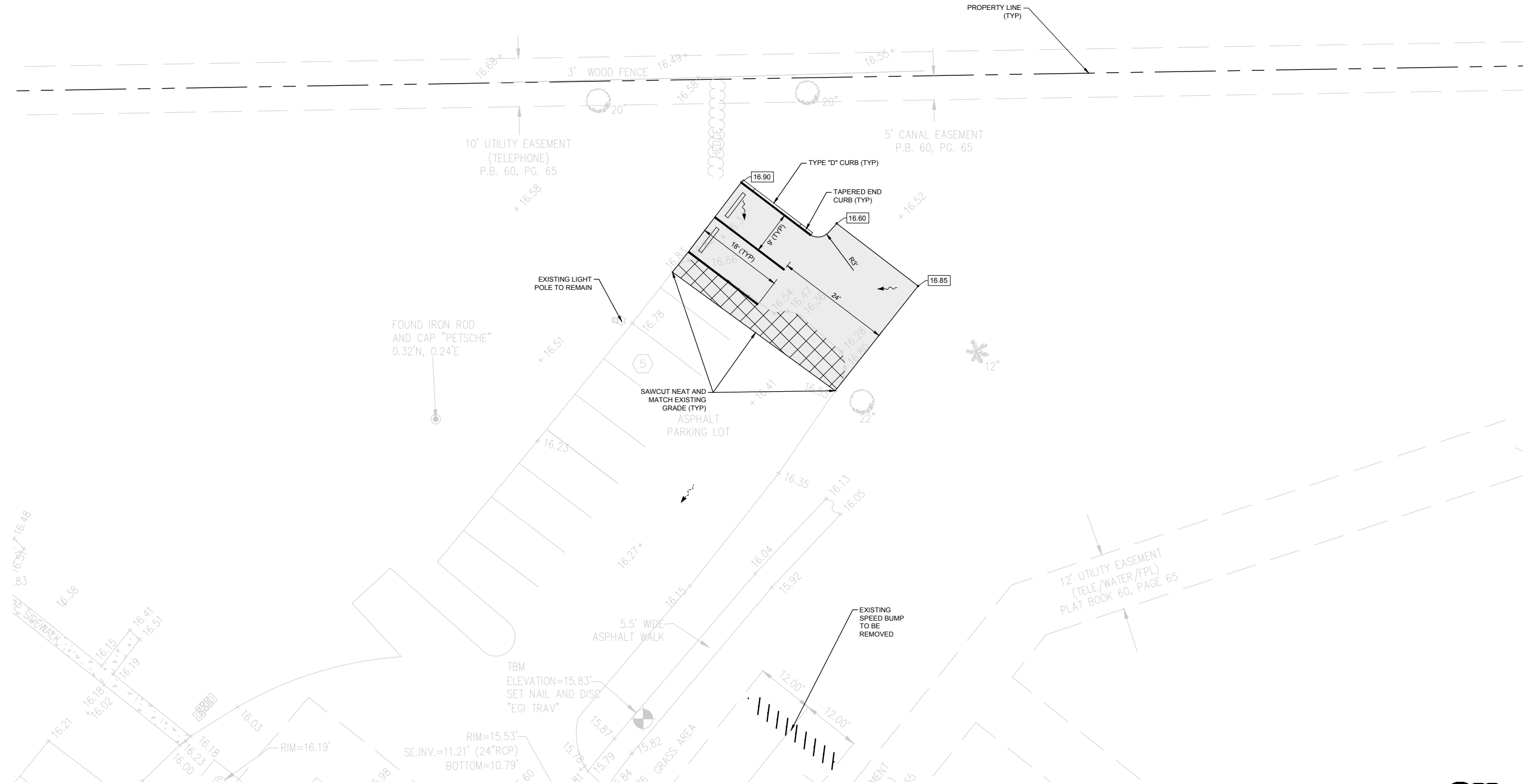
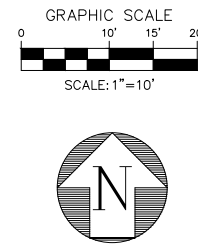
PARTIAL ASPHALT REMOVAL
TO BE FULLY DEMOLISHED
TO BE REMOVED

LEGEND - PROPOSED

ASPHALT
ASPHALT REPAIR
CONCRETE
FINISHED GRADE ELEVATION
DRAINAGE FLOW DIRECTION
TYPE C INLET

GENERAL NOTES

- ALL EXISTING SPEED BUMPS TO BE REPLACED UNLESS OTHERWISE NOTED. REFER TO CITY OF DELRAY BEACH DETAIL RT 3.5C ON SHEET 10.
- ALL PAVEMENT TO BE MILLED AND RESURFACED.
- ALL EXISTING WHEEL STOPS TO BE PRESSURE WASHED, REPAINTED AND REUSED IF IN ACCEPTABLE CONDITION. ONLY REPLACE DAMAGED WHEEL STOPS.
- ALL STRIPING MUST COMPLY WITH THE CITY OF DELRAY BEACH STANDARD DETAILS.
- ALL STRIPING TO MATCH EXISTING UNLESS OTHERWISE NOTED OR IS NONCOMPLIANT WITH CURRENT CITY STANDARD DETAILS.
- ANY TREES OR SHRUBS PLACED WITHIN WATER, SEWER, OR DRAINAGE EASEMENTS SHALL CONFORM TO THE CITY OF DELRAY BEACH STANDARD DETAILS, LD 1.1 & LD 1.2
- ALL ELEVATIONS ARE REFERENCED TO THE 1988 NORTH AMERICAN VERTICAL DATUM (NAVD)



HALF SIZE PRINT - NOT TO SCALE

ADAM C. SWANEY, P.E., PROFESSIONAL ENGINEER LICENSE NO. 72235.
THIS DOCUMENT HAS BEEN ELECTRONICALLY SIGNED AND
SEALED BY ADAM C. SWANEY, P.E. USING A SHA-1 AUTHENTICATION CODE.
PRINTED COPIES OF THIS DOCUMENT ARE NOT CONSIDERED SIGNED AND
SEALED AND THE SHA-1 AUTHENTICATION CODE MUST BE VERIFIED ON ANY
ELECTRONIC COPIES.



NO.	DATE	REVISIONS	BY

©COPYRIGHT 2020 BY
ENGENUITY GROUP, INC.
THIS DOCUMENT IS PROVIDED FOR
INFORMATIONAL PURPOSES ONLY.
UNLESS SIGNED AND SEALED BY
A LICENSED PROFESSIONAL
ENGINEER OR ARCHITECT,
ENGENUITY GROUP, INC.
ADAM C. SWANEY, P.E.
NO. 72235

CHATEAU WOOD
3640 VILLAGE DRIVE
DELRAY BEACH, FLORIDA
PAVING, GRADING, AND DRAINAGE PLAN



DATE	10/1/2020
DRAWN	KAK
PROJECT ENGINEER	KAK
PROJECT MANAGER	ACS
CHECKED	KBJ
JOB NO.	19158.01

LEGEND - EXISTING

	MEASURED ELEVATION		FLORIDA POWER & LIGHT		WATER METER		6" QUEEN PALM AND SIZE
	CONCRETE		NUMBER OF PARKING SPACES		FIRE HYDRANT		6" OAK TREE AND SIZE
	CENTERLINE		INFORMATION SIGN (DOUBLE POST)		WATER VALVE		6" CABBAGE PALM AND SIZE
	PLASTIC PIPE		INFORMATION SIGN (SINGLE POST)		GUY WIRE		6" PONYTAIL PALM AND SIZE
	CORRUGATED METAL PIPE		METAL FENCE		UTILITY POLE		EXISTING DRAINAGE FLOW DIRECTION
	REINFORCED CONCRETE PIPE		TEMPORARY BENCHMARK		CONCRETE POWER POLE		
	ELEVATION		IRRIGATION CONTROL VALVE		OVERHEAD ELECTRIC		
	INVERT		LIGHT POLE		UNDERGROUND STORM		
	TELEPHONE		CATCH BASIN		6" PINE TREE AND SIZE		

LEGEND - DEMOLITION

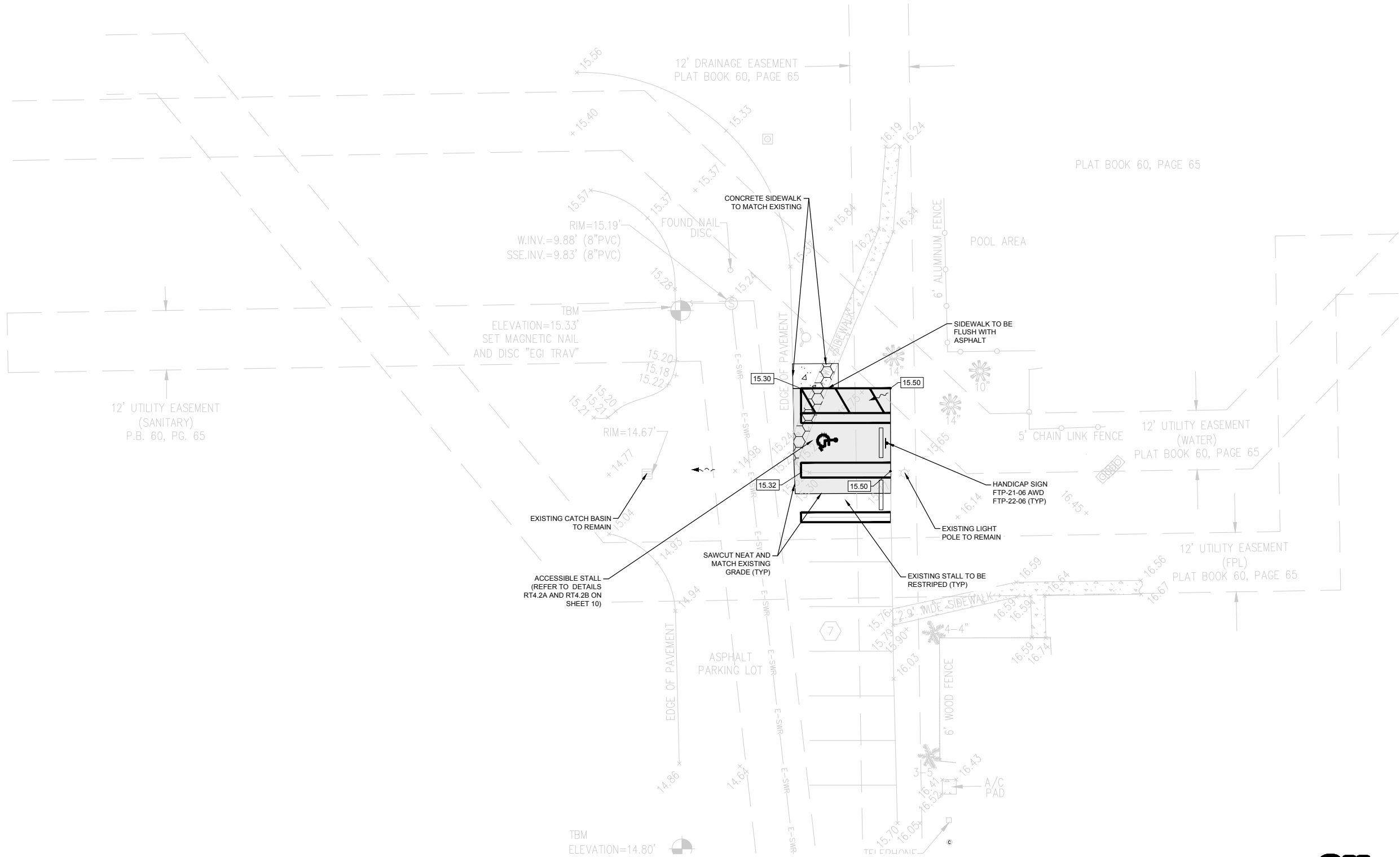
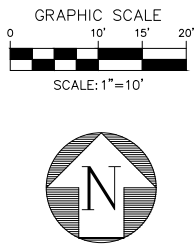
	PARTIAL ASPHALT REMOVAL
	TO BE FULLY DEMOLISHED
	TO BE REMOVED

LEGEND - PROPOSED

	ASPHALT
	ASPHALT REPAIR
	CONCRETE
	25.00 FINISHED GRADE ELEVATION
	DRAINAGE FLOW DIRECTION
	TYPE C INLET

GENERAL NOTES

1. ALL EXISTING SPEED BUMPS TO BE REPLACED UNLESS OTHERWISE NOTED. REFER TO CITY OF DELRAY BEACH DETAIL RT 3.5C ON SHEET 10.
2. ALL PAVEMENT TO BE MILLED AND RESURFACED.
3. ALL EXISTING WHEEL STOPS TO BE PRESSURE WASHED, REPAINTED AND REUSED IF IN ACCEPTABLE CONDITION. ONLY REPLACE DAMAGED WHEEL STOPS.
4. ALL STRIPING MUST COMPLY WITH THE CITY OF DELRAY BEACH STANDARD DETAILS.
5. ALL STRIPING TO MATCH EXISTING UNLESS OTHERWISE NOTED OR IS NONCOMPLIANT WITH CURRENT CITY STANDARD DETAILS.
6. ANY TREES OR SHRUBS PLACED WITHIN WATER, SEWER, OR DRAINAGE EASEMENTS SHALL CONFORM TO THE CITY OF DELRAY BEACH STANDARD DETAILS, LD 1.1 & LD 1.2
7. ALL ELEVATIONS ARE REFERENCED TO THE 1988 NORTH AMERICAN VERTICAL DATUM (NAVD)



HALF SIZE PRINT - NOT TO SCALE

ADAM C. SWANEY, P.E., PROFESSIONAL ENGINEER LICENSE NO. 72235.
THIS DOCUMENT HAS BEEN ELECTRONICALLY SIGNED AND
SEALED BY ADAM C. SWANEY, P.E. USING A SHA-1 AUTHENTICATION CODE.
PRINTED COPIES OF THIS DOCUMENT ARE NOT CONSIDERED SIGNED AND
SEALED AND THE SHA-1 AUTHENTICATION CODE MUST BE VERIFIED ON ANY
ELECTRONIC COPIES.



REVISIONS		NO.	DATE	REMARKS	BY

©COPYRIGHT 2020 BY
ENGENUITY GROUP, INC.
THIS DOCUMENT IS PROVIDED FOR
INFORMATIONAL PURPOSES ONLY.
UNLESS SIGNED AND SEALED BY
A LICENSED PROFESSIONAL
ENGINEER OR ARCHITECT,
IT IS NOT TO BE USED FOR
CONSTRUCTION.
ADAM C. SWANEY, P.E.
NO. 72235

CHATEAU WOOD
3640 VILLAGE DRIVE
DELRAY BEACH, FLORIDA
PAVING, GRADING, AND DRAINAGE PLAN

A Higher Standard of Excellence
engenuity
group inc.
ENGINEERS • LANDSCAPE ARCHITECTS • DESIGN-BUILD
1200 N. CONGRESS AVE., SUITE 101
WEST PALM BEACH, FLORIDA 33409
PH: (561) 655-1151 • FAX: (561) 652-9390
WWW.ENGENUITYGROUP.COM CERTIFICATE OF AUTHORIZATION #7095

DATE	10/1/2020	DATE	10/1/2020
DRAWN	KAK	PROJECT	KAK
ENGINEER	KAK	PROJECT	KAK
MANAGER	ACS	CHECKED	KBJ
JOB NO.	19158.01		

LEGEND - EXISTING

MEASURED ELEVATION	FPL	FLORIDA POWER & LIGHT
CONCRETE	NUMBER OF PARKING SPACES	INFORMATION SIGN (DOUBLE POST)
CENTERLINE	INFORMATION SIGN (SINGLE POST)	METAL FENCE
PVC	PLASTIC PIPE	TEMPORARY BENCHMARK
CMP	CORRUGATED METAL PIPE	IRRIGATION CONTROL VALVE
RCP	REINFORCED CONCRETE PIPE	LIGHT POLE
ELEV.	ELEVATION	CATCH BASIN
INV.	INVERT	
TELE	TELEPHONE	

LEGEND - DEMOLITION

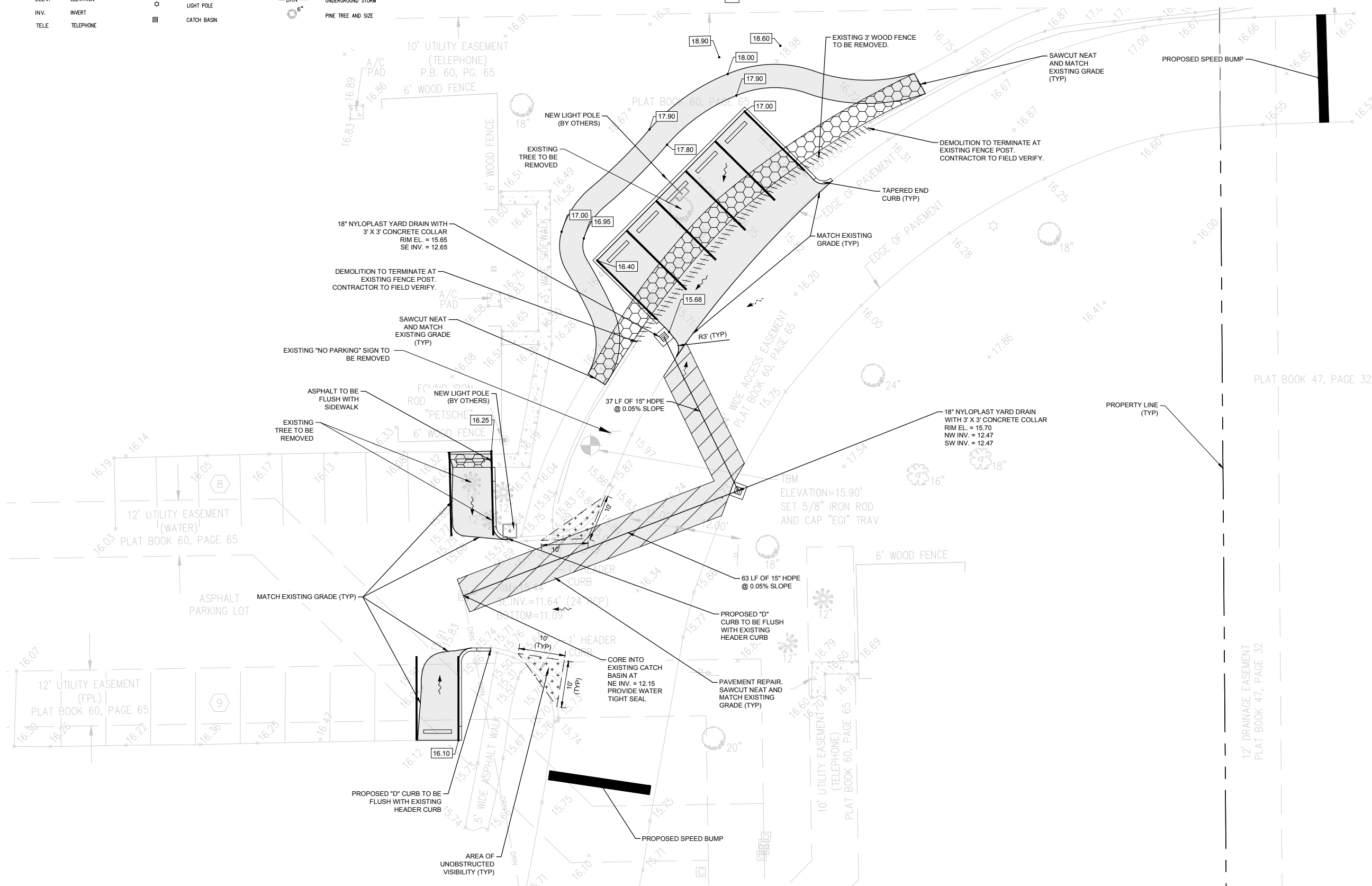
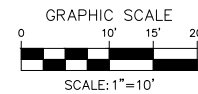
PARTIAL ASPHALT REMOVAL
TO BE FULLY DEMOLISHED
TO BE REMOVED

LEGEND - PROPOSED

ASPHALT
ASPHALT REPAIR
CONCRETE
FINISHED GRADE ELEVATION
DRAINAGE FLOW DIRECTION
18" NYLOPLAST YARD DRAIN

GENERAL NOTES

- ALL EXISTING SPEED BUMPS TO BE REPLACED UNLESS OTHERWISE NOTED. REFER TO CITY OF DELRAY BEACH DETAIL RT 3.5C ON SHEET 10.
- ALL PAVEMENT TO BE MILLED AND RESURFACED.
- ALL EXISTING WHEEL STOPS TO BE PRESSURE WASHED, REPAINTED AND REUSED IF IN ACCEPTABLE CONDITION. ONLY REPLACE DAMAGED WHEEL STOPS.
- ALL STRIPING MUST COMPLY WITH THE CITY OF DELRAY BEACH STANDARD DETAILS.
- ALL STRIPING TO MATCH EXISTING UNLESS OTHERWISE NOTED OR IS NONCOMPLIANT WITH CURRENT CITY STANDARD DETAILS.
- ANY TREES OR SHRUBS PLACED WITHIN WATER, SEWER, OR DRAINAGE EASEMENTS SHALL CONFORM TO THE CITY OF DELRAY BEACH STANDARD DETAILS, LD 1.1 & LD 1.2
- ALL ELEVATIONS ARE REFERENCED TO THE 1988 NORTH AMERICAN VERTICAL DATUM (NAVD)



HALF SIZE PRINT - NOT TO SCALE

NO.	DATE	REVISIONS	REMARKS	BY

©COPYRIGHT 2020 BY ADAM C. SWANEY, P.E. THIS DRAWING IS PROVIDED FOR INFORMATIONAL PURPOSES ONLY. UNLESS SIGNED AND SEALED BY A LICENSED PROFESSIONAL ENGINEER, THIS DRAWING IS VOID. ENGENUITY GROUP, INC.

ADAM C. SWANEY, P.E.
NO. 72235

CHATEAU WOOD
3640 VILLAGE DRIVE
DELRAY BEACH, FLORIDA

PAVING, GRADING, AND DRAINAGE PLAN

A Higher Standard of Excellence
engenuity group inc.
ENGINEERS • LANDSCAPE ARCHITECTS • GIS MAPPERS

1200 N. CONGRESS AVE., SUITE 101
WEST PALM BEACH, FLORIDA 33409
PH: (561) 655-1151 • FAX: (561) 652-9390
WWW.ENGENUITYGROUP.COM CERTIFICATE OF AUTHORIZATION #7095

DATE	10/1/2020
DRAWN	KAK
PROJECT ENGINEER	KAK
PROJECT MANAGER	ACS
CHECKED	KBJ
JOB NO.	19158.01



ADAM C. SWANEY, P.E., PROFESSIONAL ENGINEER LICENSE NO. 72235. THIS DOCUMENT HAS BEEN ELECTRONICALLY SIGNED AND SEALED BY ADAM C. SWANEY, P.E. USING A SHA-1 AUTHENTICATION CODE. PRINTED COPIES OF THIS DOCUMENT ARE NOT CONSIDERED SIGNED AND SEALED AND THE SHA-1 AUTHENTICATION CODE MUST BE VERIFIED ON ANY ELECTRONIC COPIES.

LEGEND - EXISTING

MEASURED ELEVATION	FPL	FLORIDA POWER & LIGHT	WATER METER	6"	QUEEN PALM AND SIZE
CONCRETE	NUMBER OF PARKING SPACES		FIRE HYDRANT	6"	OAK TREE AND SIZE
CENTERLINE	INFORMATION SIGN (DOUBLE POST)		WATER VALVE	6"	CABBAGE PALM AND SIZE
PVC	INFORMATION SIGN (SINGLE POST)		GUY WIRE	6"	PONYTAIL PALM AND SIZE
PLASTIC PIPE	METAL FENCE		UTILITY POLE		EXISTING DRAINAGE FLOW DIRECTION
CORRUGATED METAL PIPE	TEMPORARY BENCHMARK		CONCRETE POWER POLE		
REINFORCED CONCRETE PIPE	IRRIGATION CONTROL VALVE		OVERHEAD ELECTRIC		
ELEVATION	LIGHT POLE		UNDERGROUND STORM		
INVERT	CATCH BASIN		PINE TREE AND SIZE		
TELEPHONE					

LEGEND - DEMOLITION

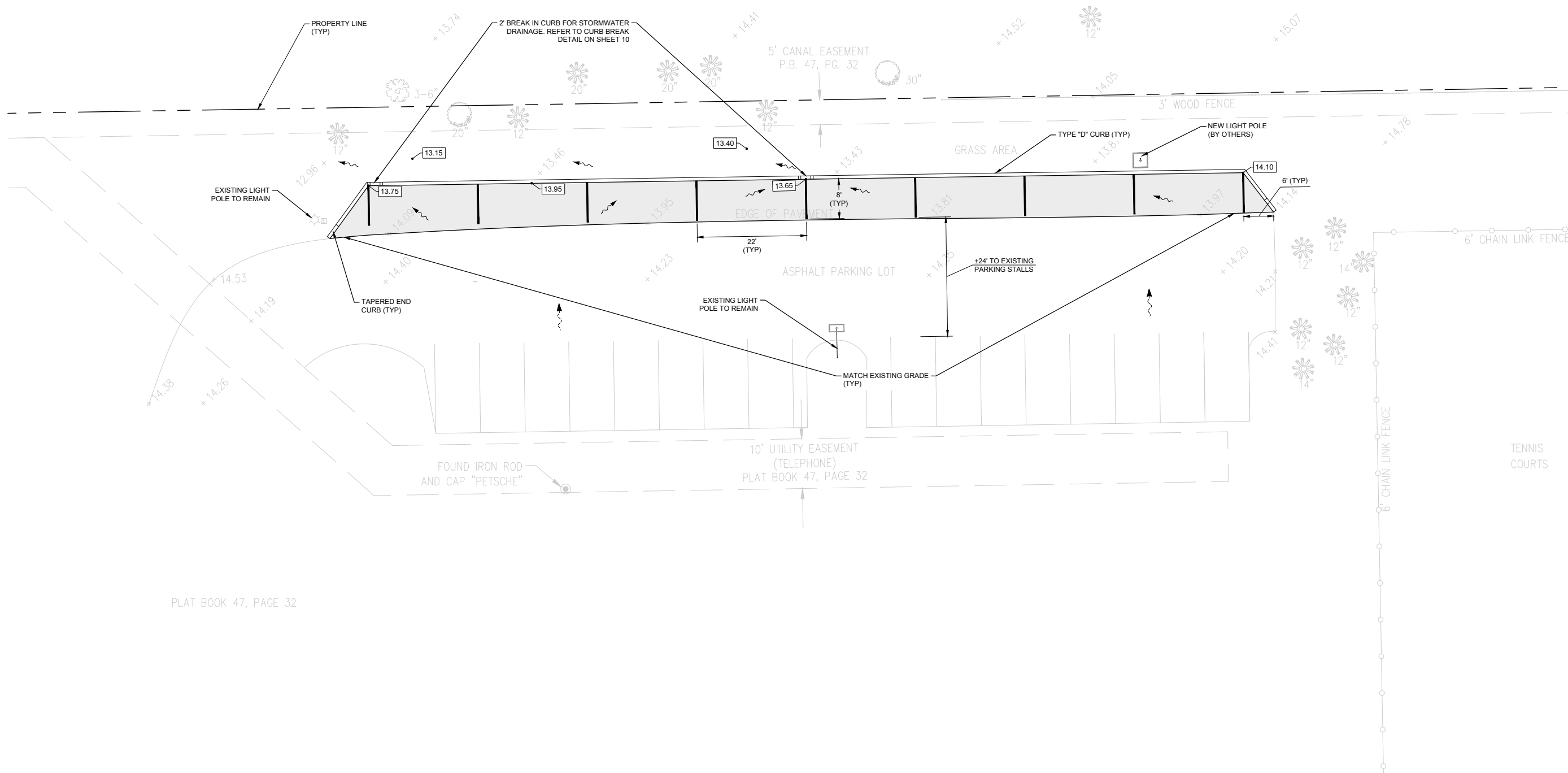
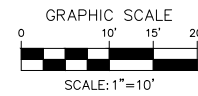
PARTIAL ASPHALT REMOVAL
TO BE FULLY DEMOLISHED
TO BE REMOVED

LEGEND - PROPOSED

ASPHALT
ASPHALT REPAIR
CONCRETE
FINISHED GRADE ELEVATION
DRAINAGE FLOW DIRECTION
18" NYLOPLAST YARD DRAIN

GENERAL NOTES

- ALL EXISTING SPEED BUMPS TO BE REPLACED UNLESS OTHERWISE NOTED. REFER TO CITY OF DELRAY BEACH DETAIL RT 3.5C ON SHEET 10.
- ALL PAVEMENT TO BE MILLED AND RESURFACED.
- ALL EXISTING WHEEL STOPS TO BE PRESSURE WASHED, REPAINTED AND REUSED IF IN ACCEPTABLE CONDITION. ONLY REPLACE DAMAGED WHEEL STOPS.
- ALL STRIPING MUST COMPLY WITH THE CITY OF DELRAY BEACH STANDARD DETAILS.
- ALL STRIPING TO MATCH EXISTING UNLESS OTHERWISE NOTED OR IS NONCOMPLIANT WITH CURRENT CITY STANDARD DETAILS.
- ANY TREES OR SHRUBS PLACED WITHIN WATER, SEWER, OR DRAINAGE EASEMENTS SHALL CONFORM TO THE CITY OF DELRAY BEACH STANDARD DETAILS: LD 1.1 & LD 1.2
- ALL ELEVATIONS ARE REFERENCED TO THE 1988 NORTH AMERICAN VERTICAL DATUM (NAVD)



PLAT BOOK 47, PAGE 32

HALF SIZE PRINT - NOT TO SCALE

ADAM C. SWANEY, P.E., PROFESSIONAL ENGINEER LICENSE NO. 72235.
THIS DOCUMENT HAS BEEN ELECTRONICALLY SIGNED AND
SEALED BY ADAM C. SWANEY, P.E. USING A SHA-1 AUTHENTICATION CODE.
PRINTED COPIES OF THIS DOCUMENT ARE NOT CONSIDERED SIGNED AND
SEALED AND THE SHA-1 AUTHENTICATION CODE MUST BE VERIFIED ON ANY
ELECTRONIC COPIES.



NO.	DATE	REVISIONS	REMARKS	BY

©COPYRIGHT 2020 BY ENGENUITY GROUP, INC. THIS DRAWING IS PROVIDED FOR INFORMATIONAL PURPOSES ONLY. UNLESS SIGNED AND SEALED BY A LICENSED PROFESSIONAL ENGINEER, IT IS NOT VALID. ENGENUITY GROUP, INC.

ADAM C. SWANEY, P.E.
NO. 72235

CHATEAU WOOD
3640 VILLAGE DRIVE
DELRAY BEACH, FLORIDA

PAVING, GRADING, AND DRAINAGE PLAN

A Higher Standard of Excellence

engenuity group inc.

ENGINEERS • SURVEYORS • EIR SUPPORTERS

1390 N. CONGRESS AVE., SUITE 101
WEST PALM BEACH, FLORIDA 33409
PH: (561) 655-1151 • FAX: (561) 652-9390
WWW.ENGENUITYGROUP.COM CERTIFICATE OF AUTHORIZATION #7095

DATE	10/1/2020	DRAWN	KAK
PROJECT ENGINEER	KAK	PROJECT MANAGER	ACS
CHECKED	KBJ	JOB NO.	19158.01

LEGEND - EXISTING

MEASURED ELEVATION	FPL	FLORIDA POWER & LIGHT	WATER METER
CONCRETE	NUMBER OF PARKING SPACES	WATER VALVE	FIRE HYDRANT
CENTERLINE	INFORMATION SIGN (DOUBLE POST)	GUY WIRE	UTILITY POLE
PVC	INFORMATION SIGN (SINGLE POST)	CONCRETE POWER POLE	OVERHEAD ELECTRIC
CMP	METAL FENCE	IRRIGATION CONTROL VALVE	UNDERGROUND STORM
RCP	TEMPORARY BENCHMARK	LIGHT POLE	PINE TREE AND SIZE
ELEV.	IRrigation CONTROL VALVE	CATCH BASIN	
INV.			
TELE			

LEGEND - DEMOLITION

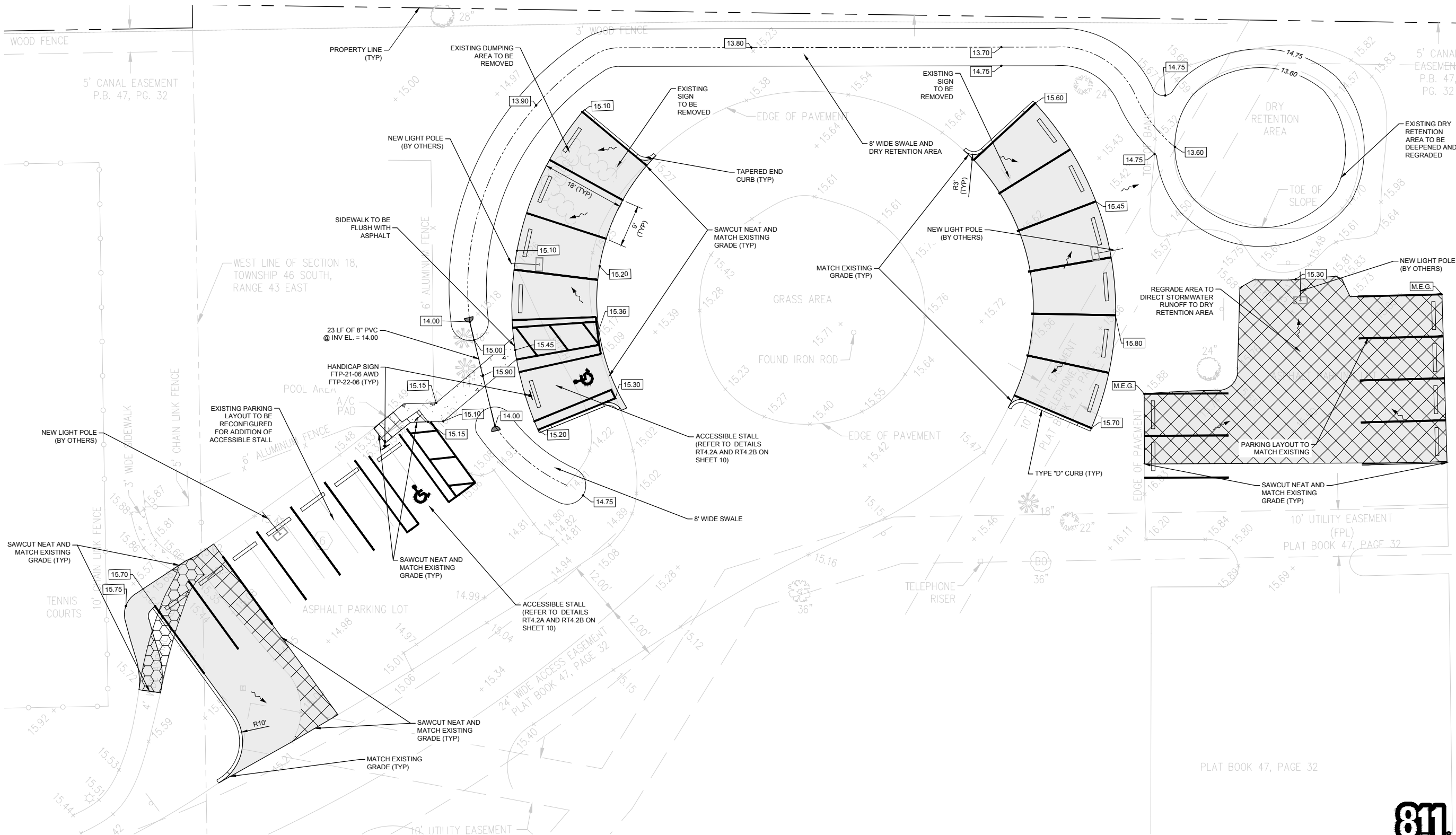
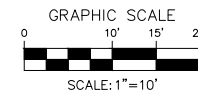
PARTIAL ASPHALT REMOVAL
TO BE FULLY DEMOLISHED
TO BE REMOVED

LEGEND - PROPOSED

ASPHALT
ASPHALT REPAIR
CONCRETE
FINISHED GRADE ELEVATION
DRAINAGE FLOW DIRECTION
18" NYLOPLAST YARD DRAIN
MATCH EXISTING GRADE
MITERED END SECTION

GENERAL NOTES

- ALL EXISTING SPEED BUMPS TO BE REPLACED UNLESS OTHERWISE NOTED. REFER TO CITY OF DELRAY BEACH DETAIL RT 3.5C ON SHEET 10.
- ALL PAVEMENT TO BE MILLED AND RESURFACED.
- ALL EXISTING WHEEL STOPS TO BE PRESSURE WASHED, REPAINTED AND REUSED IF IN ACCEPTABLE CONDITION. ONLY REPLACE DAMAGED WHEEL STOPS.
- ALL STRIPING MUST COMPLY WITH THE CITY OF DELRAY BEACH STANDARD DETAILS.
- ALL STRIPING TO MATCH EXISTING UNLESS OTHERWISE NOTED OR IS NONCOMPLIANT WITH CURRENT CITY STANDARD DETAILS.
- ANY TREES OR SHRUBS PLACED WITHIN WATER, SEWER, OR DRAINAGE EASEMENTS SHALL CONFORM TO THE CITY OF DELRAY BEACH STANDARD DETAILS, LD 1.1 & LD 1.2
- ALL ELEVATIONS ARE REFERENCED TO THE 1988 NORTH AMERICAN VERTICAL DATUM (NAVD)



NO.	DATE	REVISIONS	REMARKS	BY

©COPYRIGHT 2020 BY ADAM C. SWANEY, P.E. THIS DRAWING IS PROVIDED FOR INFORMATIONAL PURPOSES ONLY. UNLESS SIGNED AND SEALED BY A LICENSED PROFESSIONAL ENGINEER, IT IS NOT TO BE USED FOR ANY OTHER PURPOSE. ADAM C. SWANEY, P.E. NO. 72235

CHATEAU WOOD
3640 VILLAGE DRIVE
DELRAY BEACH, FLORIDA
PAVING, GRADING, AND DRAINAGE PLAN

A Higher Standard of Excellence
engenuity
group inc.
ENGINEERS • LANDSCAPE ARCHITECTS • DESIGN-BUILD
1395 N. CONGRESS AVE., SUITE 101
WEST PALM BEACH, FLORIDA 33409
PH: (561) 655-1151 • FAX: (561) 652-9390
WWW.ENGUENITYGROUP.COM CERTIFICATE OF AUTHORIZATION #7095

DATE	DRAWN	PROJECT	PROJECT	CHECKED	JOB NO.
10/1/2020	KAK	KAK	ACS	KBJ	19158.01
8	12				



ADAM C. SWANEY, P.E., PROFESSIONAL ENGINEER LICENSE NO. 72235. THIS DOCUMENT HAS BEEN ELECTRONICALLY SIGNED AND SEALED BY ADAM C. SWANEY, P.E. USING A SHA-1 AUTHENTICATION CODE. PRINTED COPIES OF THIS DOCUMENT ARE NOT CONSIDERED SIGNED AND SEALED AND THE SHA-1 AUTHENTICATION CODE MUST BE VERIFIED ON ANY ELECTRONIC COPIES.

HALF SIZE PRINT - NOT TO SCALE

LEGEND - EXISTING

MEASURED ELEVATION	FPL	FLORIDA POWER & LIGHT
CONCRETE	NUMBER OF PARKING SPACES	INFORMATION SIGN (DOUBLE POST)
CENTERLINE	INFORMATION SIGN (SINGLE POST)	METAL FENCE
PVC	PLASTIC PIPE	TEMPORARY BENCHMARK
CMP	CORRUGATED METAL PIPE	IRRIGATION CONTROL VALVE
RCP	REINFORCED CONCRETE PIPE	LIGHT POLE
ELEV.	ELEVATION	CATCH BASIN
INV.	INVERT	
TELE	TELEPHONE	

WATER METER	QUEEN PALM AND SIZE
FIRE HYDRANT	OAK TREE AND SIZE
WATER VALVE	CABBAGE PALM AND SIZE
GUY WIRE	PONTYTAIL PALM AND SIZE
UTILITY POLE	EXISTING DRAINAGE FLOW DIRECTION
CONCRETE POWER POLE	
OVERHEAD ELECTRIC	
UNDERGROUND STORM	
PINE TREE AND SIZE	

LEGEND - DEMOLITION

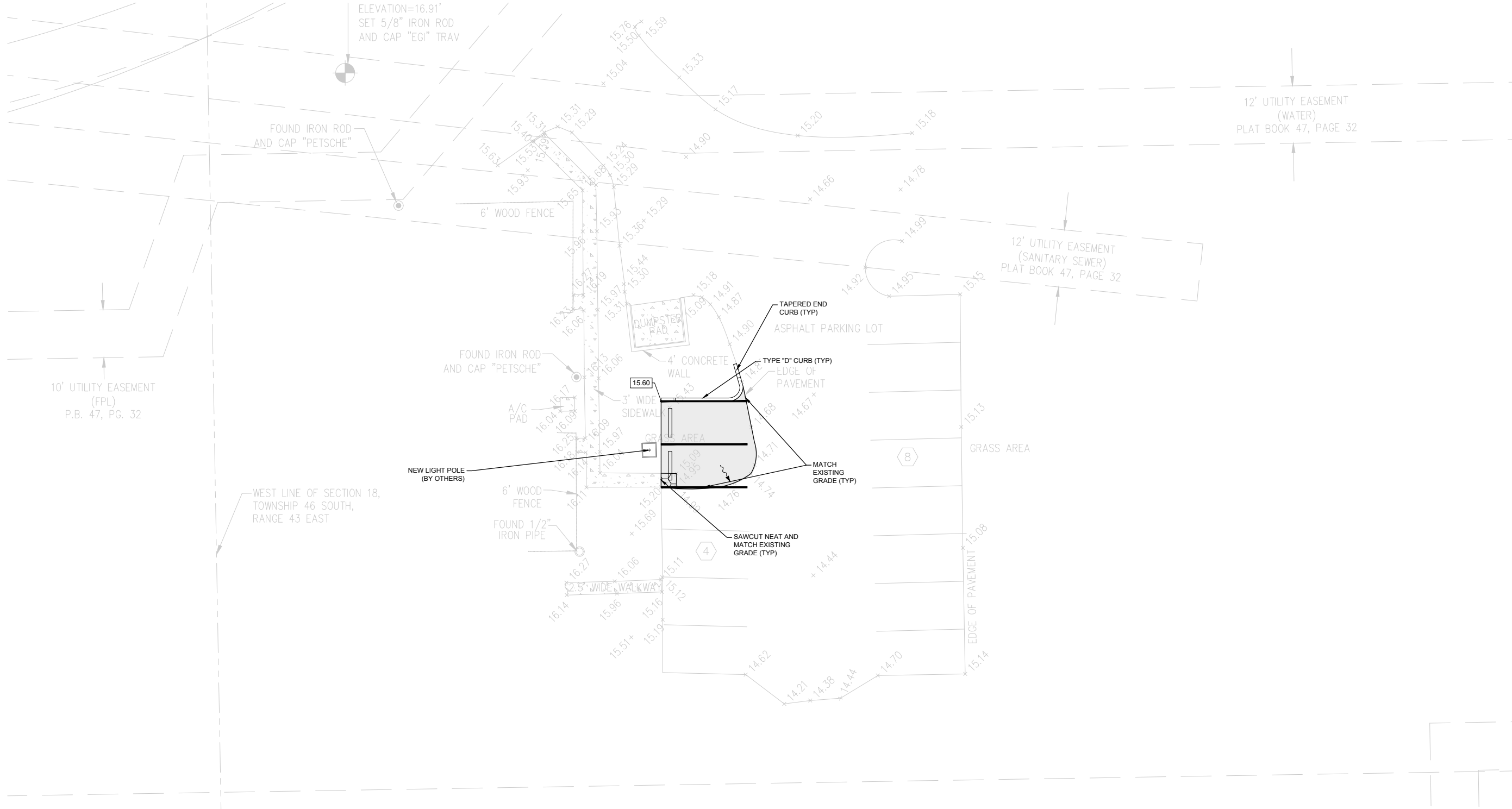
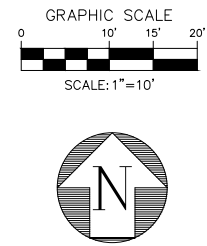
PARTIAL ASPHALT REMOVAL
TO BE FULLY DEMOLISHED
TO BE REMOVED

LEGEND - PROPOSED

ASPHALT
ASPHALT REPAIR
CONCRETE
FINISHED GRADE ELEVATION
DRAINAGE FLOW DIRECTION
18" NYLOPLAST YARD DRAIN

GENERAL NOTES

- ALL EXISTING SPEED BUMPS TO BE REPLACED UNLESS OTHERWISE NOTED. REFER TO CITY OF DELRAY BEACH DETAIL RT 3.5C ON SHEET 10.
- ALL PAVEMENT TO BE MILLED AND RESURFACED.
- ALL EXISTING WHEEL STOPS TO BE PRESSURE WASHED, REPAINTED AND REUSED IF IN ACCEPTABLE CONDITION. ONLY REPLACE DAMAGED WHEEL STOPS.
- ALL STRIPING MUST COMPLY WITH THE CITY OF DELRAY BEACH STANDARD DETAILS.
- ALL STRIPING TO MATCH EXISTING UNLESS OTHERWISE NOTED OR IS NONCOMPLIANT WITH CURRENT CITY STANDARD DETAILS.
- ANY TREES OR SHRUBS PLACED WITHIN WATER, SEWER, OR DRAINAGE EASEMENTS SHALL CONFORM TO THE CITY OF DELRAY BEACH STANDARD DETAILS; LD 1.1 & LD 1.2
- ALL ELEVATIONS ARE REFERENCED TO THE 1988 NORTH AMERICAN VERTICAL DATUM (NAVD)



HALF SIZE PRINT - NOT TO SCALE

ADAM C. SWANEY, P.E., PROFESSIONAL ENGINEER LICENSE NO. 72235.
THIS DOCUMENT HAS BEEN ELECTRONICALLY SIGNED AND
SEALED BY ADAM C. SWANEY, P.E. USING A SHA-1 AUTHENTICATION CODE.
PRINTED COPIES OF THIS DOCUMENT ARE NOT CONSIDERED SIGNED AND
SEALED AND THE SHA-1 AUTHENTICATION CODE MUST BE VERIFIED ON ANY
ELECTRONIC COPIES.



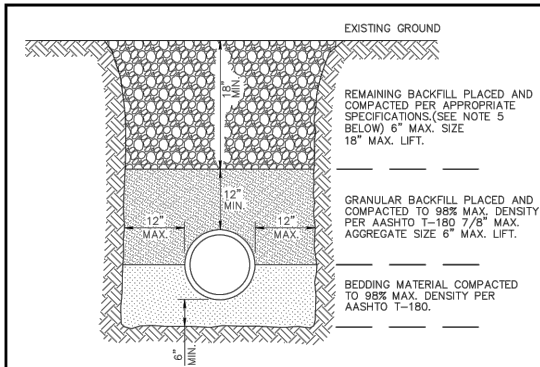
REVISIONS	NO.	DATE	REMARKS	BY

©COPYRIGHT 2020 BY
ENGENUITY GROUP, INC.
THIS DOCUMENT IS PROVIDED FOR
INFORMATIONAL PURPOSES ONLY.
UNLESS SIGNED AND SEALED BY
A LICENSED PROFESSIONAL
ENGINEER, IT IS NOT VALID.
ADAM C. SWANEY, P.E.
NO. 72235

CHATEAU WOOD
3640 VILLAGE DRIVE
DELRAY BEACH, FLORIDA
PAVING, GRADING, AND DRAINAGE PLAN

A Higher Standard of Excellence
engenuity
group inc.
ENGINEERS • SURVEYORS • EIR SUPPORTERS
1390 N. CONGRESS AVE., SUITE 101
WEST PALM BEACH, FLORIDA 33409
PH: (561) 655-1151 • FAX: (561) 652-9390
WWW.ENGENUITYGROUP.COM CERTIFICATE OF AUTHORIZATION #7095

DATE	10/1/2020
DRAWN	KAK
PROJECT ENGINEER	KAK
PROJECT MANAGER	ACS
CHECKED	KBJ
JOB NO.	19158.01

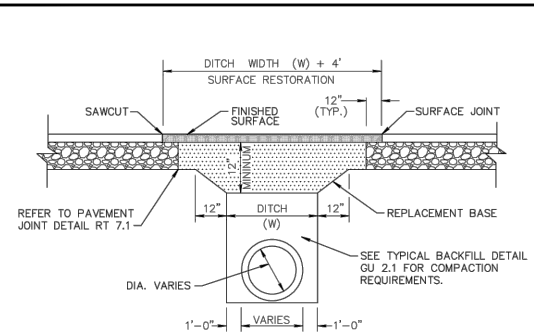


NOTES:

- UNDESIRABLE IN-SITU MATERIALS SUCH AS MUCK, DEBRIS AND LARGE ROCKS SHALL BE REMOVED; BEDDING MATERIAL AND BACKFILL CONSISTING OF WASHED AND GRADED LIMEROCK 3/8" - 7/8" SIZING.
- THE PIPE AND/OR STRUCTURE SHALL BE FULLY SUPPORTED FOR ITS ENTIRE LENGTH WITH APPROPRIATE COMPACTION UNDER THE PIPE HAUNCHES.
- THE PIPE AND/OR STRUCTURE SHALL BE PLACED IN A DRY TRENCH.
- BACKFILL SHALL BE FREE OF UNSUITABLE MATERIAL SUCH AS LARGE ROCK, MUCK, AND DEBRIS.
- COMPACT BACKFILL TO 98% DENSITY UNDER PAVEMENT AND TO 95% DENSITY ELSEWHERE (AASHTO T-180)
- COMPACTION AND DENSITY TESTS SHALL BE COMPLETED DURING BACKFILL OPERATIONS, CONTRACTORS NOT FOLLOWING THIS PROCEDURE, FOR WHATEVER REASONS, SHALL BE REQUIRED TO RE-EXCAVATE THE AREA IN QUESTION, DOWN TO THE BEDDING MATERIAL, THEN BACKFILL FOLLOWING THE ABOVE PROCEDURES.

CITY of DELRAY BEACH
 ENVIRONMENTAL SERVICES DEPARTMENT
404 SOUTH SWINERTON AVENUE, DELRAY BEACH, FLORIDA 33446

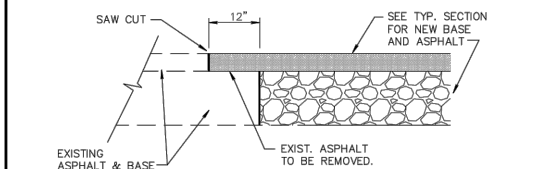
TYPICAL BACKFILL DETAIL
 DATE: 08-08-08
 GU 2.1



- REPLACEMENT BASE TO BE AT MIN. 12" THICK.
- BASE MATERIAL SHALL BE PLACED IN TWO LIFTS AND EACH LIFT COMPACTED TO 98% MAXIMUM DENSITY PER AASHTO T-180 (MAX. LIFT THICKNESS = 6").
- 12" EXCAVATABLE FLOWABLE FILL MIN. 100 P.S.I. MAY BE USED IN LIEU OF 12" BASE.
- ASPHALT CONCRETE PAVEMENT JOINTS SHALL BE MECHANICALLY SAWED.
- ALL DISTURBED PAVEMENT MARKINGS SHALL BE RESTORED IN ACCORDANCE WITH CITY STANDARDS.
- SURFACE MATERIAL SHALL BE F.D.O.T. TYPE S-I OR S-II ASPHALTIC CONC. (MIN. THICKNESS 1 1/2").
- ANY PAVT. CUTS SHALL BE COLD PATCHED AT END OF EACH WORKING DAY TO FACILITATE UNHINDERED TRAFFIC FLOW.

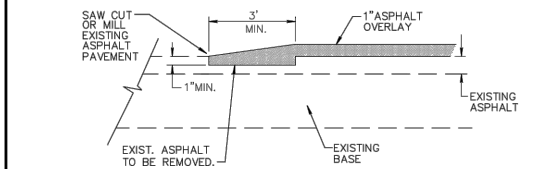
CITY of DELRAY BEACH
 ENVIRONMENTAL SERVICES DEPARTMENT
404 SOUTH SWINERTON AVENUE, DELRAY BEACH, FLORIDA 33446

PAVEMENT REPAIR DETAIL
 DATE: 08-13-2008
 GU 1.1



NOTE:

THIS METHOD OF PAVEMENT JOINT SHALL BE USED FOR ANY APPLICATION OR CONSTRUCTION WHERE PROPOSED PAVEMENT AND BASE WILL BE CONNECTED TO EXISTING PAVEMENT AND BASE.

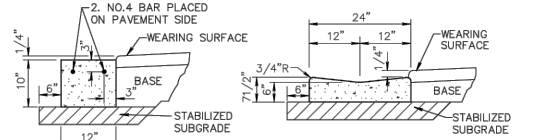


NOTE:

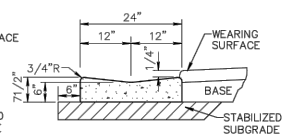
THIS METHOD OF PAVEMENT JOINT SHALL BE USED FOR ANY APPLICATION OR CONSTRUCTION WHERE PROPOSED PAVEMENT WILL BE CONNECTED TO EXISTING PAVEMENT.

CITY of DELRAY BEACH
 ENVIRONMENTAL SERVICES DEPARTMENT
404 SOUTH SWINERTON AVENUE, DELRAY BEACH, FLORIDA 33446

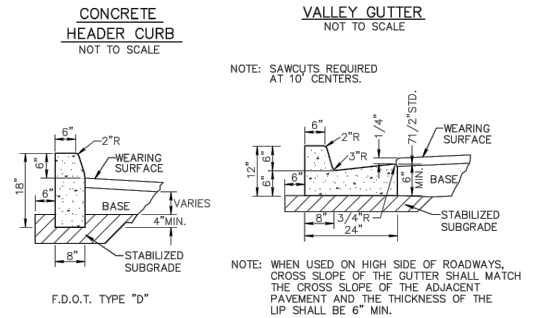
PAVEMENT JOINT
 DATE: 12-05-2000
 RT 7.1



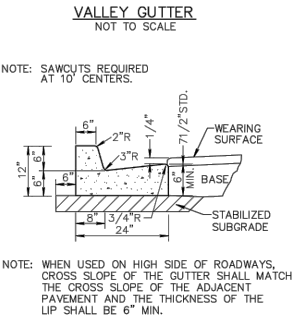
**CONCRETE
HEADER CURB**
NOT TO SCALE



VALLEY GUTTER
NOT TO SCALE



CONCRETE CURB
NOT TO SCALE

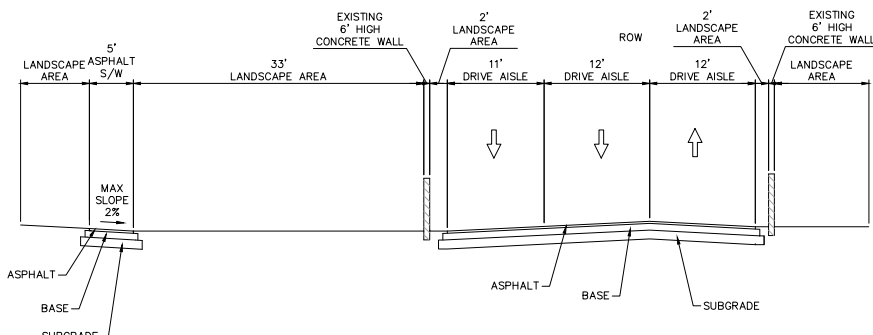


CONCRETE CURB AND GUTTER
NOT TO SCALE

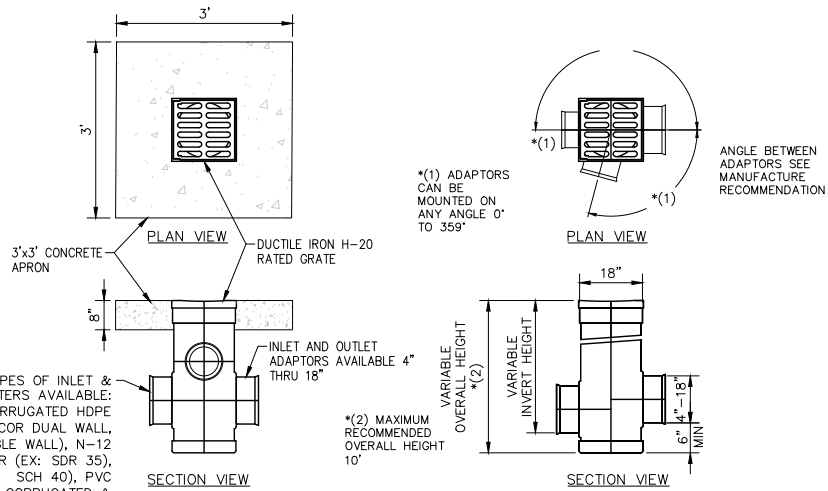
- NOTES:
- ROADWAY SUBGRADE SHALL IN ALL CASES EXTEND BELOW CURBING.
 - SAWCUTS AT 10' CENTERS SHALL BE MADE WITHIN 24 HOURS OF CONCRETE PLACEMENT.

CITY of DELRAY BEACH
 ENVIRONMENTAL SERVICES DEPARTMENT
404 SOUTH SWINERTON AVENUE, DELRAY BEACH, FLORIDA 33446

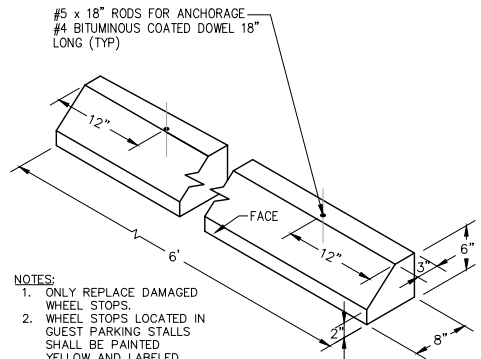
CURB AND GUTTER SECTIONS
 DATE: 04-08-08
 RT 6.1



SECTION A-A
SCALE 1" = 10'



18" NYLOPLAST YARD DRAIN
N.T.S.



- NOTES:
- ONLY REPLACE DAMAGED WHEEL STOPS.
 - WHEEL STOPS LOCATED IN GUEST PARKING STALLS SHALL BE PAINTED YELLOW AND LABELED "GUEST". WHEEL STOPS LOCATED IN ASSIGNED STALLS SHALL BE WHITE AND LABELED ACCORDING TO THE HOMEOWNERS ASSOCIATION.

TYPICAL WHEEL STOP
N.T.S.

ADAM C. SWANEY, P.E., PROFESSIONAL ENGINEER LICENSE NO. 72235.
THIS DOCUMENT HAS BEEN ELECTRONICALLY SIGNED AND SEALED BY ADAM C. SWANEY, P.E. USING A SHA-1 AUTHENTICATION CODE.
PRINTED COPIES OF THIS DOCUMENT ARE NOT CONSIDERED SIGNED AND SEALED AND THE SHA-1 AUTHENTICATION CODE MUST BE VERIFIED ON ANY ELECTRONIC COPIES.



NO.	DATE	REMARKS	BY

©COPYRIGHT 2020 BY ENGENUITY GROUP, INC. THIS DRAWING IS PROVIDED FOR INFORMATIONAL PURPOSES ONLY. UNLESS SIGNED AND SEALED BY A LICENSED PROFESSIONAL ENGINEER, IT IS NOT TO BE USED FOR CONSTRUCTION. ENGENUITY GROUP, INC.

ADAM C. SWANEY, P.E.
 NO. 72235

CHATEAU WOOD
 3640 VILLAGE DRIVE
 DELRAY BEACH, FLORIDA
 DETAILS

A Higher Standard of Excellence

 ENGINEERS • SURVEYORS • DESIGNERS • EIR SUPPORTERS

1200 N. CONGRESS AVE., SUITE 101
 WEST PALM BEACH, FLORIDA 33409
 PH: (561) 655-1151 • FAX: (561) 652-9390
 WWW.ENGENUITYGROUP.COM CERTIFICATE OF AUTHORIZATION #7095

DATE	DRAWN	PROJECT ENGINEER	PROJECT MANAGER	CHECKED	JOB NO.
10/1/2020	KAK	KAK	ACS	KBJ	19158.01

PAVEMENT MARKING GENERAL NOTES:

1. PAVEMENT MARKING:

- A. DO NOT APPLY MARKINGS WITHIN 5 DAYS OF PAVEMENT PLACEMENT WITH THE EXCEPTION OF FRICTION COURSE WHICH IS 30 DAYS.
- B. PRIOR TO APPLYING PAVEMENT MARKINGS, REMOVE ANY MATERIAL THAT WOULD ADVERSELY AFFECT THE BOND.
- C. DO NOT APPLY WHEN WINDS ARE SUFFICIENT TO CAUSE SPRAY DUST.
- D. PRIOR TO APPLICATION OF THERMOPLASTIC MATERIAL TO PORTLAND CEMENT CONCRETE SURFACES, APPLY A TWO-PART EPOXY PRIMER SEALER RECOMMENDED BY THE MANUFACTURER.
- E. ESTABLISH TACK POINTS AT APPROPRIATE INTERVALS FOR USE IN ALIGNING MARKINGS.
- F. APPLY ONLY DURING DAYLIGHT HOURS AND, AS FAR AS PRACTICAL, SHALL BE TERMINATED IN TIME TO PERMIT SUFFICIENT DRYING BY SUNSET.
- G. THE SURFACE WHICH IS TO BE PAINTED SHALL BE CLEANED, BY COMPRESSED AIR OR OTHER EFFECTIVE MEANS, IMMEDIATELY BEFORE THE START OF PAINTING AND SHALL BE CLEAN AND DRY WHEN THE PAINT IS APPLIED. ANY VEGETATION OR LOOSE SOIL SHALL BE REMOVED FROM THE PAVEMENT BEFORE STRIPING BEGINS.
- H. THOROUGHLY MIX PAINT BEFORE POURING INTO THE PAINTING MACHINE. NO THINNING OF THE PAINT IN THE MACHINE WILL BE ALLOWED AT ANY TIME. BEFORE THE START OF EACH DAY'S WORK THE PAINT CONTAINER, THE CONNECTIONS, AND THE SPRAY NOZZLES ON THE MACHINE SHALL BE THOROUGHLY CLEANED WITH PAINT THINNER OR OTHER SUITABLE CLEANER.

2. APPLICATION - THERMOPLASTIC:

- A. APPLY THERMOPLASTIC TO THE PAVEMENT BY EXTRUSION.
- B. EDGES OF MARKINGS ARE TO BE WELL DEFINED.
- C. THICKNESS TO BE AT LEAST 90 MILS.
- D. APPLY REFLECTIVE GLASS SPHERES IMMEDIATELY BEHIND THE STRIPING MECHANISM.

3. APPLICATION - REFLECTIVE PAINT:

- A. APPLY PAINT TO THE PAVEMENT BY SPRAY.
- B. EDGES OF MARKINGS ARE TO BE WELL DEFINED.
- C. APPLY PAINT TO ATTAIN A MINIMUM WET FILM THICKNESS OF 15 MILS.
- D. APPLY SPHERES IMMEDIATELY AND UNIFORMLY FOLLOWING THE PAINT APPLICATION.

4. APPLICATION - REFLECTIVE PAVEMENT MARKERS:

- A. SET REFLECTIVE PAVEMENT MARKERS 1 INCH TO THE LEFT OR RIGHT OF THE LINE.
- B. APPLY THE ADHESIVE TO THE BONDING SURFACE (NOT THE MARKER) SO THAT 100 PERCENT OF THE BONDING AREA OF THE MARKER WILL BE COVERED.
- C. APPLY SUFFICIENT ADHESIVE TO ENSURE THAT THE MARKER IS PRESSED DOWN INTO THE ADHESIVE AND ADHESIVE WILL BE FORCED AROUND THE PERIMETER OF THE MARKER.
- D. IMMEDIATELY REMOVE EXCESS ADHESIVE FROM THE BONDING SURFACE AND THE EXTERNAL SURFACE OF THE MARKER.
5. PROTECTION:
- A. DO NOT ALLOW TRAFFIC ONTO NEWLY PAINTED TRAFFIC STRIPES AND MARKINGS UNTIL THEY ARE SUFFICIENTLY DRY TO PERMIT VEHICLES TO CROSS THEM WITHOUT DAMAGE.
- B. WARNING SIGNS SHALL BE SET UP BEFORE THE BEGINNING OF EACH OPERATION AND EXTRA SIGNS SHALL BE KEPT WELL AHEAD OF THE APPLICATION EQUIPMENT. THE EQUIPMENT SHALL BE SO OPERATED THAT TRAFFIC MAY PASS SAFELY. WARNING SIGNS ARE TO BE PLACED ONLY WHERE OPERATIONS ARE IN PROGRESS AND ARE TO BE RELOCATED AS OFTEN AS IS NECESSARY.
- C. ERECT ADEQUATE WARNING SIGNS, AND TAKE NECESSARY PRECAUTIONS FOR THE PROTECTION OF THE WET PAVEMENT MARKINGS AND THE SAFETY OF THE PUBLIC. CONES, RUBBER "Z" GUARDS, OR SIMILAR PROTECTIVE DEVICES SHALL BE PLACED ALONG THE NEWLY PAINTED STRIPE TO PREVENT TRAFFIC FROM CROSSING THE WET PAINT. ANY SUCH DEVICES USED SHALL BE OF A TYPE THAT WILL NOT CAUSE DAMAGE TO VEHICULAR TRAFFIC IN THE EVENT THAT THESE OBJECTS ARE ACCIDENTALLY PASSED OVER.
- D. ANY PORTIONS OF THE PAVEMENT MARKINGS DAMAGED BY PASSING TRAFFIC OR FROM ANY OTHER CAUSE SHALL BE REWORKED AT NO ADDITIONAL COST TO THE OWNER.
- E. IF MORE THAN 2 PERCENT OF THE REFLECTIVE PAVEMENT MARKERS FAIL IN ADHESION OR ALIGNMENT WITHIN THE 45 DAYS UNDER TRAFFIC, REPLACE ALL FAILED MARKERS AT NO ADDITIONAL COST TO THE OWNER.

6. CORRECTIVE MEASURES:

- A. PAVEMENT MARKINGS WHICH FAIL TO MEET THE GUIDELINES, INCLUDING THE PERMISSIBLE TOLERANCES AND THE APPEARANCE REQUIREMENTS, ARE MARKED OR DAMAGED BY TRAFFIC OR FROM ANY OTHER CAUSE SHALL BE CORRECTED AT NO ADDITIONAL COST TO OWNER. DRIPS AND SPATTERED PAINT SHALL BE REMOVED. WHENEVER IT IS NECESSARY TO REMOVE PAINT IT SHALL BE DONE BY MEANS WHICH WILL NOT DAMAGE THE UNDERLYING SURFACE OF THE PAVEMENT. WHEN NECESSARY TO CORRECT A DEVIATION WHICH EXCEEDS THE PERMISSIBLE TOLERANCE IN ALIGNMENT, THAT PORTION OF THE STRIP AFFECTED SHALL BE REMOVED AND REPAINTED IN ACCORDANCE WITH THESE GUIDELINES.
- B. MISALIGNMENT, DEFECTIVE SURFACES, AND THE LIKE, SHALL BE CORRECTED BY SANDBLASTING OR BY ANY OTHER TYPE OF MECHANICAL DEVICE WHICH WILL EFFECTIVELY REMOVE THE PAINT WITHOUT DAMAGE TO THE PAVEMENT SURFACE.

7. DIMENSION AND ALIGNMENT TOLERANCE:

- A. NO MARKING SHALL BE LESS THAN THE INDICATED WIDTH. NO MARKING SHALL EXCEED THE INDICATED WIDTH BY MORE THAN 1/8 INCH.
- B. CORRECTIONS OF VARIATION IN THE WIDTH OF, AND THE ALIGNMENT OF STRIPS SHALL NOT BE MADE ABRUPTLY BUT THE STRIPES SHOULD BE RETURNED TO THE DESIGN WIDTH AT THE RATE OF AT LEAST 10 FEET FOR EACH 1/8 INCH OF CORRECTION.
- C. WHERE A STRIPE DEVIATES FROM THE CORRECT ALIGNMENT, AS INDICATED BY THE STRING LINE, BY MORE THAN ONE INCH IN ANY 20 FOOT LENGTH, IT SHALL BE OBLITERATED AND THE STRIPE CORRECTED.

PAVING, GRADING AND DRAINAGE NOTES:

1. SUBGRADE SHALL BE CONSTRUCTED AS SHOWN ON THE DETAIL DRAWINGS. THE SUBGRADE SHALL BE COMPACTED TO A DENSITY OF 98% OF THE MAXIMUM DENSITY AS DETERMINED BY AASHTO T-180. THE SUBGRADE SHALL HAVE FBV OF 75 PSI.
2. STABILIZED SUBGRADE SHALL BE CONSTRUCTED AS SHOWN ON THE DETAIL DRAWINGS AND IN ACCORDANCE WITH SECTION 160 OF THE FLORIDA DEPARTMENT OF TRANSPORTATION STANDARD SPECIFICATIONS FOR ROAD AND BRIDGE CONSTRUCTION, LATEST EDITION. THE STABILIZED SUBGRADE SHALL BE TYPE B AND SHALL BE COMPACTED TO A DENSITY OF 98% OF THE MAXIMUM DENSITY AS DETERMINED BY TEST METHOD OF AASHTO T-180. THE STABILIZED SUBGRADE SHALL HAVE A LIMEROCK BEARING RATIO OF 100.
3. SHELL ROCK BASE SHALL BE CONSTRUCTED IN ACCORDANCE WITH SECTION 250 OF THE FLORIDA DEPARTMENT OF TRANSPORTATION STANDARD SPECIFICATIONS FOR ROAD AND BRIDGE CONSTRUCTION, LATEST EDITION. THE THICKNESS OF THE SHELL ROCK BASE SHALL BE AS SHOWN ON THE DETAIL DRAWINGS AND SHALL BE COMPACTED TO A DENSITY OF 98% OF THE MAXIMUM DENSITY AS DETERMINED BY AASHTO T-180. THE SHELL ROCK SHALL HAVE A MINIMUM OF 40 PERCENT OF CARBONATES OF CALCIUM AND MAGNESIUM IN THE MATERIAL.
4. CEMENTED COQUINA SHELL BASE SHALL BE CONSTRUCTED IN ACCORDANCE WITH SECTION 250 OF THE FLORIDA DEPARTMENT OF TRANSPORTATION STANDARD SPECIFICATIONS FOR ROAD AND BRIDGE CONSTRUCTION, LATEST EDITION. THE THICKNESS OF THE SHELL ROCK BASE SHALL BE AS SHOWN ON THE DETAIL DRAWINGS AND SHALL BE COMPACTED TO A DENSITY OF 98% OF THE MAXIMUM DENSITY AS DETERMINED BY AASHTO T-180. THE CEMENTED COQUINA SHELL MATERIAL SHALL BE IN ACCORDANCE WITH SECTION 915 OF THE FLORIDA DEPARTMENT OF TRANSPORTATION STANDARD SPECIFICATIONS FOR ROAD AND BRIDGE CONSTRUCTION, LATEST EDITION.
5. LIMEROCK BASE SHALL BE CONSTRUCTED IN ACCORDANCE WITH SECTION 200 OF THE FLORIDA DEPARTMENT OF TRANSPORTATION STANDARD SPECIFICATIONS FOR ROAD AND BRIDGE CONSTRUCTION, LATEST EDITION. THE THICKNESS OF THE LIMEROCK BASE SHALL BE AS SHOWN ON THE DETAILED DRAWINGS AND SHALL BE COMPACTED TO A DENSITY OF 98% OF THE MAXIMUM DENSITY AS DETERMINED BY AASHTO T-180.
6. PRIME COAT SHALL BE IN ACCORDANCE WITH SECTION 300 OF THE FLORIDA DEPARTMENT OF TRANSPORTATION STANDARD SPECIFICATIONS FOR ROAD AND BRIDGE CONSTRUCTION, LATEST EDITION. PRIME COAT SHALL BE RC-70 OR ASPHALT EMULSION PRIME (AEP). PRIME COAT SHALL BE APPLIED AT A RATE OF APPLICATION NOT LESS THAN 0.10 GALLONS PER SQUARE YARD FOR LIMEROCK BASES AND NOT LESS THAN 0.15 GALLONS PER SQUARE YARD FOR SHELL ROCK OR COQUINA SHELL BASES.
7. TACK COAT SHALL BE IN ACCORDANCE WITH SECTION 300 OF THE FLORIDA DEPARTMENT OF TRANSPORTATION STANDARD SPECIFICATIONS FOR ROAD AND BRIDGE CONSTRUCTION, LATEST EDITION. TACK COAT SHALL BE EMULSIFIED ASPHALT GRADES RS-2, CRS-2, OR ASPHALT EMULSION PRIME (AEP). TACK COAT SHALL BE APPLIED AT A RATE OF APPLICATION BETWEEN 0.02 AND 0.08 GALLONS PER SQUARE YARD.
8. TYPE S-4 ASPHALTIC CONCRETE SURFACE COURSE SHALL BE COMPOSED OF A MIXTURE OF AGGREGATE, MINERAL FILLER, IF NEEDED, AND ASPHALT CEMENT. THE CONSTITUENTS OF THE MIXTURE SHALL BE COMBINED IN SUCH PROPORTIONS AS TO PRODUCE A MIXTURE HAVING A STABILITY WITHIN THE LIMITS IN THE FOOT "STANDARD SPECIFICATIONS". THE JOB MIX FORMULA, SIZE AND PERCENT OF AGGREGATES SHALL BE AS SPECIFIED IN THE FOOT "STANDARD SPECIFICATIONS". THE THICKNESS OF THE SURFACE COURSE SHALL BE AS SHOWN ON THE DETAILED DRAWINGS.
9. TYPE S-4 ASPHALTIC CONCRETE SURFACE COURSE SHALL BE COMPOSED OF A MIXTURE OF AGGREGATE, MINERAL FILLER, IF NEEDED, AND ASPHALT CEMENT. THE CONSTITUENTS OF THE MIXTURE SHALL BE COMBINED IN SUCH PROPORTIONS AS TO PRODUCE A MIXTURE HAVING A STABILITY WITHIN THE LIMITS IN THE FOOT "STANDARD SPECIFICATIONS". THE JOB MIX FORMULA, SIZE AND PERCENT OF AGGREGATES SHALL BE AS SPECIFIED IN THE FOOT "STANDARD SPECIFICATIONS". THE THICKNESS OF THE SURFACE COURSE SHALL BE AS SHOWN ON THE DETAILED DRAWINGS.
10. ALL UNSUITABLE MATERIAL SUCH AS MUCK, MARL, AND DEBRIS SHALL BE COMPLETELY REMOVED TO 10 FEET OUTSIDE THE EDGE OF THE PAVEMENT ON EACH SIDE. IF HARDPAN IS ENCOUNTERED IN SWALES, IT SHALL BE REMOVED TO A DEPTH OF 2 FEET AT THE SWALE INVERT AND BACKFILLED WITH CLEAN GRANULAR MATERIAL.
11. SEQUENCING OF CONSTRUCTION SHALL BE SUCH THAT ALL UNDERGROUND INSTALLATIONS OF ANY KIND THAT WILL COME UNDER THE PAVEMENT OR WITHIN TEN FEET OF THE EDGE OF PAVEMENT SHALL BE INSTALLED PRIOR TO THE CONSTRUCTION OF THE BASE COURSE.
12. PAVEMENT TRAFFIC STRIPES AND MARKINGS SHALL BE IN ACCORDANCE WITH SECTION 710 AND 711 OF THE FLORIDA DEPARTMENT OF TRANSPORTATION STANDARD SPECIFICATIONS FOR ROAD AND BRIDGE CONSTRUCTION, LATEST EDITION, FLORIDA DEPARTMENT OF TRANSPORTATION TRAFFIC OPERATION STANDARDS INDEX NO. 17346, LATEST REVISION, AND/OR MANUAL ON UNIFORM TRAFFIC CONTROL DEVICES FOR STREETS AND HIGHWAYS, AND/OR PALM BEACH COUNTY TRAFFIC DESIGN TYPICAL, T-PB-001.
13. REINFORCED CONCRETE PIPE SHALL MEET THE REQUIREMENTS OF ASTM C-76 AND SECTIONS 125, 430 AND 941 OF THE FLORIDA DEPARTMENT OF TRANSPORTATION STANDARD SPECIFICATIONS FOR ROAD AND BRIDGE CONSTRUCTION, LATEST EDITION. THE CLASS OF PIPE SHALL BE CLASS III UNLESS OTHERWISE NOTED ON THE CONSTRUCTION DRAWINGS.
14. CORRUGATED STEEL PIPE SHALL MEET THE REQUIREMENTS OF AASHTO M36 AND SECTIONS 125, 430 AND 945 OF THE FLORIDA DEPARTMENT OF TRANSPORTATION STANDARD SPECIFICATIONS FOR ROAD AND BRIDGE CONSTRUCTION, LATEST EDITION. THE PIPE SHALL BE BITUMINOUS COATED.
15. CORRUGATED ALUMINUM PIPE SHALL MEET THE REQUIREMENTS OF AASHTO M196 AND SECTIONS 125, 430 AND 943 OF THE FLORIDA DEPARTMENT OF TRANSPORTATION STANDARD SPECIFICATIONS FOR ROAD AND BRIDGE CONSTRUCTION, LATEST EDITION.
16. ALL DRAINAGE PIPE SHALL BE POLYVINYL CHLORIDE OR CORRUGATED EXTERIOR/SMOOTH INTERIOR POLYETHYLENE PIPE SUITABLE FOR H2O LOADING. ALL PIPE SHALL MEET APPLICABLE ASTM AND AASHTO STANDARDS AND FOOT STANDARDS PER SECTION 948 OF THE FOOT STANDARD SPECIFICATIONS FOR ROAD AND BRIDGE CONSTRUCTION, LATEST EDITION.
17. MEASUREMENT OF THE LENGTH OF PIPE SHALL BE FROM THE CENTER OF THE STRUCTURE TO THE CENTER OF THE STRUCTURE.
18. THE CONTRACTOR SHALL SUBMIT TO THE ENGINEER THREE (3) CERTIFIED COPIES OF A CHEMICAL AND SIEVE ANALYSIS OF THE SHELL ROCK BY A STATE OF FLORIDA CERTIFIED LAB WHEN CONSTRUCTING A SHELL ROCK BASE FOR ROADWAY.
19. PRIOR TO CONSTRUCTION, THE CONTRACTOR SHALL COMPLY WITH THE NATIONAL POLLUTION DISCHARGE ELIMINATION SYSTEM (NPDES) PERMITTING REQUIREMENTS. COMPLIANCE INCLUDES SUBMITTAL OF A NOTICE OF INTENT (NOI) FOR CONSTRUCTION ACTIVITIES WITH AN ATTACHED STORM WATER POLLUTION PREVENTION PLAN (SWPPP). THE NOI AND SWPPP SHALL BE SUBMITTED TO ALL APPLICABLE AGENCIES.

CONTRACTOR'S RESPONSIBILITIES:

1. IT SHALL BE THE CONTRACTOR'S RESPONSIBILITY TO VISIT THE SITE PRIOR TO BIDDING THE WORK AND TO PERFORM SUCH TESTS, STUDIES AND SURVEYS AS DEEMED NECESSARY TO SATISFY THE CONTRACTOR AS TO THE ACTUAL SURFACE AND SUBSURFACE CONDITIONS EXISTING AT THE SITE. ACTUAL CONDITIONS THAT DIFFER FROM THOSE SHOWN ON DRAWINGS SHALL NOT CONSTITUTE FOR EXTRA PAYMENT.
2. THE CONTRACTOR SHALL CHECK ALL DRAWINGS FURNISHED TO HIM AND SHALL PROMPTLY NOTIFY THE ENGINEER IN WRITING OF ANY DISCREPANCIES. ANYTHING SHOWN ON THE DRAWINGS AND NOT MENTIONED IN THE SPECIFICATIONS OR MENTIONED IN THE SPECIFICATIONS AND NOT SHOWN ON THE DRAWINGS SHALL BE OF NO EFFECT AS IF SHOWN OR MENTIONED IN BOTH.
3. NO CONSTRUCTION SHALL COMMENCE UNTIL ALL REQUIRED PERMITS AND APPROVALS HAVE BEEN SECURED AND THE CONTRACTOR IS ISSUED A NOTICE TO PROCEED.
4. THE CONTRACTOR SHALL COMPLY WITH ALL APPLICABLE BUILDING CODES, RULES AND REGULATIONS, INCLUDING BUT NOT LIMITED TO: UTILITY, COUNTY, CITY AND STATE.
5. THE CONTRACTOR SHALL CALL SUNSHINE (811) 48 HOURS BEFORE DIGGING FOR FIELD LOCATIONS OF UNDERGROUND UTILITIES.
6. THE CONTRACTOR SHALL PROVIDE AT LEAST 48 HOURS NOTICE TO THE VARIOUS UTILITY COMPANIES IN ADVANCE OF CONSTRUCTION.
7. PRIOR TO COMMENCEMENT OF ANY EXCAVATION, THE CONTRACTOR SHALL COMPLY WITH FLORIDA STATUTE 553.851 FOR THE PROTECTION OF ANY UNDERGROUND GAS PIPE.
8. THE CONTRACTOR SHALL EXERCISE EXTREME CAUTION IN AREAS OF BURIED CABLE, SANITARY LINES, AND WATER LINES.
9. THE CONTRACTOR SHALL BE RESPONSIBLE AT ALL TIMES THROUGHOUT THE DURATION OF CONSTRUCTION FOR THE PROTECTION OF EXISTING AND NEWLY INSTALLED UTILITIES, STRUCTURES, PAVEMENT, ETC. FROM DAMAGE OR DISRUPTION OF SERVICE AND SHALL PROTECT THE OWNER AGAINST ANY CLAIMS THAT MAY ARISE AS A RESULT OF CONSTRUCTION ACTIVITIES, REPAIRS OF SUCH UTILITIES, STRUCTURES, PAVEMENT, ETC. SHALL BE MADE TO THE SATISFACTION OF THE ENGINEER AND ALL REGULATORY AGENCIES.
10. IF THE CONTRACTOR, IN THE COURSE OF THE WORK, FINDS ANY DISCREPANCY BETWEEN THE DRAWINGS AND THE PHYSICAL CONDITIONS, OR ANY ERROR OR OMISSIONS IN THE DRAWINGS, IN THE LAYOUT AS GIVE BY THE POINTS AND INSTRUCTIONS, OR DISCOVERS UNFORESEEN BE THE CONTRACTOR'S DUTY TO IMMEDIATELY INFORM THE ENGINEER IN WRITING, AND THE ENGINEER SHALL PROMPTLY CHECK THE ACCURACY OF THE INFORMATION. ANY WORK DONE AFTER SUCH DISCOVERY, UNTIL NECESSARY CHANGES ARE AUTHORIZED WILL BE DONE AT THE CONTRACTOR'S RISK.
11. DURING ALL UNDERGROUND CONSTRUCTION, THE CONTRACTOR SHALL BE RESPONSIBLE FOR PROVIDING THE APPROPRIATE CLEARANCES FROM ANY PROPOSED OR EXISTING UTILITIES OR STRUCTURES, AS REQUIRED BY THE PLANS, SPECIFICATION, UTILITY AUTHORITY, AND ANY GOVERNING AGENCY. THE CONTRACTOR MUST NOTIFY THE ENGINEER IMMEDIATELY IF THE APPROPRIATE CLEARANCE IS NOT AVAILABLE.
12. REGULATIONS AND LEGAL REQUIREMENTS REGARDING WORK HOURS SHALL BE IN ACCORDANCE WITH LOCAL BUILDING CODES.
13. UPON COMPLETION OF THE WORK SPECIFIED IN THESE PLANS, THE ENGINEER WILL CONDUCT A FINAL INSPECTION. FINAL PAYMENT TO THE CONTRACTOR WILL NOT BE APPROVED UNTIL THE PROJECT IS CERTIFIED AS COMPLETE BY THE ENGINEER.
14. CONTRACTOR SHALL BE RESPONSIBLE FOR ALL CONSTRUCTION STAKING, "AS-BUILT" INFORMATION, AND ALL REQUIRED DENSITY TESTING, AND SHALL PROVIDE ALL "AS-BUILT" INFORMATION AND TEST RESULTS TO THE ENGINEER.
15. ALL UTILITY LINE TESTING AND SAMPLING SHALL BE IN ACCORDANCE WITH UTILITY AND HEALTH DEPARTMENT CRITERIA. A MINIMUM OF 24 HOUR NOTICE MUST BE PROVIDED PRIOR TO TESTING.
16. ALL CONCRETE SHALL BE 3000 p.s.i. UNLESS OTHERWISE NOTED.
17. SOD SHALL MATCH EXISTING UNLESS OTHERWISE NOTED.
18. SIDEWALK SHALL MATCH EXISTING UNLESS OTHERWISE NOTED.
19. CONTRACTOR SHALL BE RESPONSIBLE FOR THE PROTECTION OF ALL UNDERGROUND UTILITIES WHETHER OR NOT SHOWN ON THE PLANS.
20. CONTRACTOR SHALL BE RESPONSIBLE FOR PROVIDING SAFETY TO THE WORKERS IN ACCORDANCE WITH OSHA REQUIREMENTS AND THE SAFETY OF THE GENERAL PUBLIC.
21. CONTRACTOR TO FURNISH COMPOSITE UTILITY PLAN IN ACCORDANCE WITH THE CITY OF DELRAY BEACH LDR SECTION 2.4.3(F)(4) AT THE TIME OF OBTAINING BUILDING PERMIT.
22. CONTRACTOR TO FURNISH FINANCIAL GUARANTEE IN ACCORDANCE WITH THE CITY OF DELRAY BEACH LDR SECTION 2.4.10 FOR APPLICABLE ITEMS INDICATED IN LDR SECTION 2.4.10(A) AT THE TIME OF OBTAINING BUILDING PERMIT

GENERAL NOTES:

1. CONTRACTOR SHALL PROTECT ALL PERMANENT REFERENCE MONUMENTS AND TAKE ALL PRECAUTIONS NECESSARY TO AVOID SURVEY MARKERS DURING CONSTRUCTION. CONTRACTOR SHALL BE RESPONSIBLE FOR REPLACEMENT OF PERMANENT REFERENCE MONUMENTS DISTURBED DURING CONSTRUCTION, AT NO ADDITIONAL COST TO THE OWNER.
2. ALL UNSUITABLE MATERIAL SUCH AS MUCK, MARL, AND DEBRIS SHALL BE REMOVED AND PROPERLY DISPOSED OF WITHIN THE LIMITS OF CONSTRUCTION. CLEAN GRANULAR MATERIAL SHALL BE USED AS BACKFILL AND PLACED IN 12 INCH LIFTS.
3. CONTRACTOR SHALL BE RESPONSIBLE FOR THE PROTECTION OF ALL EXISTING UNDERGROUND UTILITIES WHETHER OR NOT SHOWN ON THE PLANS. UTILITIES SHOWN ON THE PLANS ARE FOR REFERENCE ONLY AND MAY NOT SHOW ACTUAL LOCATIONS. CONTRACTOR SHALL NOTIFY ALL UTILITY COMPANIES FOR LOCATION AND DEPTH OF THEIR LINES PRIOR TO CONSTRUCTION.
4. CONTRACTOR SHALL BE RESPONSIBLE TO COORDINATE AND PAY FOR THE DE-ENERGIZING OF POWER LINES AND/OR HOLDING POWER POLES DURING CONSTRUCTION AT NO ADDITIONAL COST TO THE OWNER.
5. CONTRACTOR SHALL BE RESPONSIBLE TO COORDINATE AND PAY FOR THE REPLACEMENT OF TRAFFIC LOOPS IF DAMAGED DURING CONSTRUCTION AT NO ADDITIONAL COST TO THE OWNER.
6. THE CONTRACTOR SHALL GIVE THE ENGINEER 48 HOURS NOTICE PRIOR TO REQUESTING REQUIRED INSPECTIONS AND SHALL SUPPLY ALL EQUIPMENT NECESSARY TO PROPERLY TEST AND INSPECT THE COMPLETED WORK.
7. MINIMUM FINISHED FLOOR ELEVATION(S) SHALL BE ABOVE THE FEMA FLOOD HAZARD ELEVATION, OR 18 INCHES ABOVE MINIMUM ROAD CROWN ELEVATION, WHICHEVER IS GREATER.
8. SHOP DRAWINGS SHALL BE SUBMITTED TO THE ENGINEER FOR REVIEW PRIOR TO CONSTRUCTION OR INSTALLATION AS REQUIRED BY THE ENGINEER OR BY APPROPRIATE GOVERNING AGENCIES.
9. CONTRACTOR SHALL BE RESPONSIBLE TO SECURE AND PAY FOR, AT NO ADDITIONAL COST TO THE OWNER, ALL NECESSARY PERMITS, FEES AND LICENSES.
10. CONTRACTOR SHALL BE RESPONSIBLE FOR GIVING THE REQUIRED NOTICES AND COMPLYING WITH ALL PERMIT(S) CONDITIONS.
11. CONTRACTOR SHALL BE RESPONSIBLE TO COORDINATE AND PAY FOR THE HOLDING OF OTHER UTILITY POLES DURING CONSTRUCTION AT NO ADDITIONAL COST TO THE OWNER.
12. ALL UTILITY CONSTRUCTION SHALL BE IN ACCORDANCE WITH THE REQUIREMENTS OF THE LOCAL UTILITY.
13. ENGENTUITY GROUP, INC. SHALL NOT BE RESPONSIBLE FOR THE SAFETY OF THE WORKERS OR THE GENERAL PUBLIC. CONTRACTOR SHALL BE RESPONSIBLE FOR PROVIDING SAFETY TO THE WORKERS IN ACCORDANCE WITH OCCUPATIONAL SAFETY & HEALTH ADMINISTRATIONS (OSHA) REQUIREMENTS AND FOR THE SAFETY OF THE GENERAL PUBLIC.
14. CONTRACTOR SHALL ASSURE THAT ALL TRENCHES MORE THAN FIVE FEET DEEP WILL HAVE TRENCH PROTECTION PER THE TRENCH SAFETY ACT. THE METHOD OF TRENCH PROTECTION THE CONTRACTOR SELECTS MUST BE IN COMPLIANCE WITH OSHA REGULATIONS.
15. UNLESS OTHERWISE SPECIFIED IN THE CONTRACT DOCUMENTS, THE CONTRACTOR IS TO INCLUDE IN THEIR BID PACKAGE, PER THE TRENCH SAFETY ACT, ONE ITEM OF COST PERTAINING TO TRENCH PROTECTION.

GENERAL:

1. WORK INCLUDED:

- A. THE CONTRACTOR SHALL FURNISH ALL LABOR, SUPERINTENDENCE, QUALITY CONTROL, MATERIALS, PLANT, POWER, LIGHT, HEAT, FUEL, WATER, TOOLS, APPLIANCES, EQUIPMENT, SUPPLIES, AND OTHER MEANS OF CONSTRUCTION NECESSARY AND PROPER FOR PERFORMING AND COMPLETING THE WORK. CONTRACTOR SHALL PERFORM AND COMPLETE THE WORK IN THE MANNER BEST CALCULATED TO PROMOTE SCHEDULED CONSTRUCTION AND TO MAINTAIN THE SAFETY OF LIFE AND PROPERTY AND TO THE SATISFACTION OF THE OWNER, AND IN STRICT ACCORDANCE WITH THE CONTRACT DOCUMENTS. THE CONTRACTOR SHALL CLEAN UP THE WORK, MAINTAIN IT DURING CONSTRUCTION, AND PAY ALL COSTS INCIDENTAL THERETO. CONTRACTOR SHALL REPAIR OR RESTORE ALL STRUCTURES AND PROPERTY THAT MAY BE DAMAGED OR DISTURBED DURING PERFORMANCE OF THE WORK.
- B. THE COST OF INCIDENTAL WORK DESCRIBED IN THESE GENERAL REQUIREMENTS, FOR WHICH THERE ARE NO SPECIFIC CONTRACT ITEMS, SHALL BE CONSIDERED AS PART OF THE GENERAL COST OF COMPLETING THE WORK AND SHALL BE INCLUDED IN THE PRICES FOR THE VARIOUS CONTRACT ITEMS. NO ADDITIONAL PAYMENT WILL BE MADE THEREFOR.
- C. THE CONTRACTOR SHALL PROVIDE AND MAINTAIN SUCH MODERN PLANT, TOOLS, AND EQUIPMENT AS MAY BE NECESSARY IN THE OPINION OF THE ENGINEER, TO PERFORM IN A SATISFACTORY AND ACCEPTABLE MANNER ALL THE WORK REQUIRED BY THE CONTRACT. ONLY EQUIPMENT OF ESTABLISHED REPUTATION AND PROVEN EFFICIENCY SHALL BE USED. THE CONTRACTOR SHALL BE SOLELY RESPONSIBLE FOR THE ADEQUACY OF WORKMANSHIP, MATERIALS AND EQUIPMENT. PRIOR APPROVAL OF THE ENGINEER NOTWITHSTANDING.
- D. THE CONTRACTOR SHALL GIVE THE ENGINEER 48 HOURS NOTICE PRIOR TO REQUESTING REQUIRED INSPECTIONS AND SHALL SUPPLY ALL EQUIPMENT NECESSARY TO PROPERLY TEST AND INSPECT THE COMPLETED WORK.

2. MOBILIZATION:

- A. PERFORM PREPARATORY WORK AND OPERATIONS IN MOBILIZING FOR BEGINNING WORK ON THE PROJECT, INCLUDING, BUT NOT LIMITED TO, THOSE OPERATIONS NECESSARY FOR THE MOVEMENT OF PERSONNEL, EQUIPMENT, SUPPLIES, AND INCIDENTALS TO THE PROJECT SITE AND FOR THE ESTABLISHMENT OF TEMPORARY OFFICES, BUILDINGS, SAFETY EQUIPMENT AND FIRST AID SUPPLIES, AND OTHER FACILITIES. INCLUDE THE COSTS OF BONDS AND ANY REQUIRED INSURANCE AND ANY OTHER PRE-CONSTRUCTION EXPENSE NECESSARY FOR THE START OF THE WORK, EXCLUDING THE COST OF CONSTRUCTION MATERIALS.

3. MAINTENANCE OF TRAFFIC:

- A. PREPARE AND SUBMIT A MAINTENANCE OF TRAFFIC PLAN FOR REVIEW. A PROFESSIONAL ENGINEER LICENSED IN THE STATE OF FLORIDA OR A PERSON THAT HAS SATISFACTORILY COMPLETED THE AMERICAN TRAFFIC SAFETY SERVICES ASSOCIATION "FLORIDA ADVANCED WORK ZONE TRAFFIC CONTROL COURSE" SHALL PREPARE THE PLAN.
- B. CONTRACTOR SHALL BE RESPONSIBLE TO MAINTAIN TRAFFIC CONTROL THROUGH THE WORK AREA FOR THE DURATION OF CONSTRUCTION. PROVIDE TRAFFIC CONTROL DEVICES THAT ARE ON THE FLORIDA DEPARTMENT OF TRANSPORTATION'S "QUALIFIED PRODUCT LIST".

4. PROVISIONS FOR CONTROL OF POLLUTION:

- A. SUFFICIENT PRECAUTIONS SHALL BE TAKEN DURING CONSTRUCTION TO PREVENT THE RUN-OFF OF POLLUTING SUBSTANCES SUCH AS SILT, CLAY, FUELS, OILS, BITUMENS OR OTHER POLLUTING MATERIALS HARMFUL TO HUMANS, FISH, OR OTHER LIFE, INTO THE SUPPLIES AND SURFACE WATERS OF THE STATE OF FLORIDA. CONTROL MEASURES MUST BE ADEQUATE TO ASSURE THAT TURBIDITY IN THE RECEIVING WATER WILL NOT BE INCREASED MORE THAN 20 NEPHELOMETRIC TURBIDITY UNITS (NTU) ABOVE BACKGROUND UNLESS OTHERWISE PERMITTED. SPECIAL PRECAUTIONS SHALL BE TAKEN IN THE DAY OF CONSTRUCTION EQUIPMENT TO PREVENT OPERATIONS WHICH PROMOTE EROSION. EROSION EVIDENT WITHIN THE LIMITS OF CONSTRUCTION OR OTHER AREAS AFFECTED BY THE CONTRACTOR SHALL BE THE RESPONSIBILITY OF THE CONTRACTOR.
- B. FILL OUT A NOTICE OF INTENT FORM (FDEP FORM 62-621.300)(B) AND SUBMIT IT TO THE FLORIDA DEPARTMENT OF ENVIRONMENTAL PROTECTION.

5. PROGRESS SCHEDULE:

- A. PREPARE A CONSTRUCTION PROGRAM SCHEDULE COVERING ALL THE WORK INVOLVED IN THE CONTRACT. THIS INCLUDES SUBMITTAL AND APPROVAL OF SHOP DRAWINGS ON CRITICAL ITEMS, FABRICATION AND DELIVERY OF IDENTIFIABLE MATERIALS AND EQUIPMENT. SPECIFIC ITEMS OR WORK IN THE SCOPE, INTERFACES REQUIRED WITH OTHER CONTRACTS THAT MAY BE PART OF AN OVERALL PROJECT, AND SPECIFIC DEPENDENCIES UPON ACTS OR ACTIVITIES OF PARTIES NOT UNDER THE CONTROL OF CONTRACTOR.
- B. THE BAR GRAPH METHOD OR CRITICAL PATH METHOD ARE ACCEPTABLE FOR SCHEDULING CONSTRUCTION ACTIVITY.

6. SHOP DRAWINGS, PRODUCT DATA AND SAMPLES:

- A. SUBMIT COPIES OF ALL REQUIRED SHOP DRAWINGS, PRODUCT DATA AND SAMPLES FOR ENGINEER'S REVIEW.
- B. SHOP DRAWINGS, PRODUCT DATA, SAMPLES AND TRANSMITTAL LETTERS PERTAINING THERETO SHALL BE IDENTIFIED WITH THE TITLE OF THE PROJECT, SUBMISSION DATE, AND THE CONTRACTOR'S ACKNOWLEDGEMENT THAT HE HAS REVIEWED THEM AND FOUND THEM ACCEPTABLE.
- C. NOTIFY ENGINEER IN WRITING, AT THE TIME OF SUBMITTAL, OF ANY DEVIATIONS IN THE SUBMITTALS FROM THE REQUIREMENTS OF THE CONTACT DOCUMENTS.
- D. THE REVIEW AND APPROVAL OF SHOP DRAWINGS, SAMPLES OR PRODUCT DATA BY THE ENGINEER SHALL NOT RELIEVE THE CONTRACTOR FROM HIS RESPONSIBILITY WITH REGARD TO THE FULFILLMENT OF THE TERMS OF THE CONTRACT DOCUMENTS. ALL RISKS OF ERROR AND OMISSION ARE ASSUMED BY THE CONTRACTOR AND THE ENGINEER WILL HAVE NO RESPONSIBILITY THEREFORE.

7. BORING LOGS, OTHER REPORTS AND DRAWINGS UTILIZED BY ENGINEER:

- A. BORING LOGS, OTHER REPORTS AND DRAWINGS UTILIZED BY ENGINEER, IF ENCLOSED, ARE PROVIDED FOR CONTRACTOR'S INFORMATION AND ARE NOT A PART OF THE CONTRACT DOCUMENTS. THERE IS NO TECHNICAL DATA IN THE BORING LOGS, OTHER REPORTS OR DRAWINGS THAT SHOULD BE RELIED ON BY THE CONTRACTOR.

8. CONSTRUCTION STAKING AND RECORD DRAWINGS:

- A. THE BASELINES AND BENCHMARKS FOR PRIMARY CONTROL, NECESSARY TO ESTABLISH LINES AND GRADES NEEDED FOR CONSTRUCTION ARE SHOWN ON THE DRAWINGS. THESE BASELINES AND BENCHMARKS SHALL BE USED AS THE ORIGIN OF ALL SURVEYS, LAYOUTS AND MEASUREMENTS TO ESTABLISH CONSTRUCTION LINES AND GRADES. CONTRACTOR SHALL TAKE ALL NECESSARY PRECAUTIONS TO PREVENT THE LOSS OR DAMAGE OF PRIMARY CONTROL POINTS. ANY STAKES AND/OR CONTROL POINTS LOST OR DAMAGED BY CONSTRUCTION ACTIVITY WILL BE RE-ESTABLISHED BY CONTRACTOR AT NO ADDITIONAL EXPENSE TO OWNER.
- B. CONSTRUCTION STAKING AND RECORD DRAWINGS SHALL BE PERFORMED BY A PROFESSIONAL SURVEYOR AND MAPPER LICENSED IN THE STATE OF FLORIDA. DESIGN DATA SHALL BE LINED-OUT.
- C. RECORD DATA SHALL BE ADDED NEXT TO EACH LINED-OUT DESIGN DIMENSION OR ELEVATION.
- D. REQUIRED RECORD DRAWING INFORMATION

DRAINAGE:

- RIM/GRADE ELEVATIONS ON INLETS AND MANHOLES.
- FLOWLINE ELEVATIONS OF PIPES.
- LINEAR DISTANCE ALONG PIPES FROM STRUCTURE TO STRUCTURE.
- RECALCULATED PIPE SLOPES BASED ON FLOWLINE ELEVATIONS AND DISTANCE BETWEEN STRUCTURES.
- HORIZONTAL LOCATION OF INLETS, MANHOLES AND STRUCTURES BASED ON STATIONING/COORDINATE/DIMENSIONING

DRAWINGS:

- TOP OF PIPE/BOTTOM OF PIPE ELEVATIONS AS APPLICABLE AT ALL PIPE CROSSINGS.

GRADING:

- VERIFY ALL ELEVATIONS ON DRAWINGS.

ROADWAYS:

- ALIGNMENT TIES FOR ROAD CENTERLINES AT ALL INTERSECTIONS AND HORIZONTAL CURVES (PC AND PT).
- HORIZONTAL AND VERTICAL GEOMETRY.

STORMWATER MANAGEMENT:

- TOP OF BANK AND BOTTOM ELEVATIONS OF RETENTION/DETENTION AREAS.
- CROSS SECTION LAKE SIDE SLOPES FROM TOP OF BANK TO BOTTOM OF TOE AT 200 FEET ON CENTER.

WATER AND SEWER:

- AS REQUIRED BY LOCAL UTILITY OWNER.

9. PROTECTION/ADJUSTMENT OF UTILITIES:

- A. UTILITY INSTALLATIONS AND STRUCTURES SHALL BE UNDERSTOOD TO INCLUDE ALL POLES, TRACKS, PIPES, WIRES, CONDUITS, HOUSE SERVICE CONNECTIONS, VAULTS, MANHOLES AND ALL OTHER APPURTENANCES AND FACILITIES PERTAINING THERETO WHETHER OWNED OR CONTROLLED BY THE OWNER, OTHER GOVERNMENTAL BODIES OR PRIVATELY OWNED BY INDIVIDUALS, FIRMS OR CORPORATIONS, USED TO SERVE THE PUBLIC WITH TRANSPORTATION, TRAFFIC CONTROL, GAS, ELECTRICITY, TELEPHONE, SEWERAGE, DRAINAGE, WATER OR OTHER PUBLIC OR PRIVATE PROPERTY WHICH MAY BE AFFECTED BY THE WORK.
- B. CONTRACTOR SHALL PROTECT ALL UTILITY INSTALLATIONS AND STRUCTURES FROM DAMAGE DURING WORK. ACCESS ACROSS ANY BURIED PUBLIC UTILITY INSTALLATION OR STRUCTURE SHALL BE MADE ONLY IN SUCH LOCATIONS AND BY MEANS APPROVED BY THE UTILITY OWNER. THE CONTRACTOR SHALL SO ARRANGE OPERATIONS AS TO AVOID ANY DAMAGE TO THESE FACILITIES. ALL REQUIRED PROTECTIVE DEVICES AND CONSTRUCTION SHALL BE PROVIDED BY THE CONTRACTOR. ALL EXISTING PUBLIC UTILITIES DAMAGED BY THE CONTRACTOR WHICH ARE SHOWN ON THE DRAWINGS OR HAVE BEEN LOCATED IN THE FIELD BY THE UTILITY OWNER SHALL BE REPAIRED BY THE CONTRACTOR.
- C. PUBLIC UTILITY INSTALLATIONS OR STRUCTURES OWNED OR CONTROLLED BY THE OWNER OR OTHER GOVERNMENTAL BODY, WHICH ARE SHOWN ON THE DRAWINGS TO BE REMOVED, RELOCATED, REPLACED OR REBUILT BY THE CONTRACTOR SHALL BE INCLUDED IN THE PRICES BID FOR THE VARIOUS CONTRACT ITEMS. NO SEPARATE PAYMENTS SHALL BE MADE THEREFOR.
- D. WHERE PUBLIC UTILITY INSTALLATIONS OR STRUCTURES OWNED OR CONTROLLED BY THE OWNER OR OTHER GOVERNMENTAL BODY ARE ENCOUNTERED DURING THE COURSE OF THE WORK, AND ARE NOT INDICATED ON THE DRAWINGS OR IN THE SPECIFICATIONS, AND WHEN IN THE OPINION OF THE ENGINEER, REMOVAL, RELOCATION, REPLACEMENT OR REBUILDING IS NECESSARY TO COMPLETE THE WORK UNDER THIS CONTRACT, SUCH WORK SHALL BE ACCOMPLISHED BY THE UTILITY HAVING JURISDICTION, OR SUCH WORK MAY BE ORDERED, IN WRITING BY THE ENGINEER, FOR THE CONTRACTOR TO ACCOMPLISH. IF SUCH WORK IS ACCOMPLISHED BY THE UTILITY HAVING JURISDICTION IT WILL BE CARRIED OUT EXPEDITIOUSLY AND THE CONTRACTOR SHALL GIVE FULL COOPERATION TO PERMIT THE UTILITY TO COMPLETE THE REMOVAL, RELOCATION, REPLACEMENT OR REBUILDING AS REQUIRED. IF SUCH WORK IS ACCOMPLISHED BY THE CONTRACTOR, IT WILL BE IN ACCORDANCE WITH THE GENERAL AND SUPPLEMENTARY CONDITIONS.
- E. CONTRACTOR SHALL GIVE WRITTEN NOTICE TO OWNER AND GOVERNMENTAL UTILITY DEPARTMENTS AND OTHER OWNERS OF PUBLIC UTILITIES OF THE LOCATION OF THE PROPOSED CONSTRUCTION OPERATIONS, AT LEAST SEVENTY-TWO (72) HOURS IN ADVANCE OF BREAKING GROUND IN ANY AREA OR ON ANY UNIT OF THE WORK.
- F. THE MAINTENANCE, REPAIR, REMOVAL, RELOCATION OR REBUILDING OF PUBLIC UTILITY INSTALLATIONS AND STRUCTURES, WHEN ACCOMPLISHED BY THE CONTRACTOR AS HEREIN PROVIDED, SHALL BE DONE BY METHODS APPROVED BY THE UTILITY OWNER.

10. FIELD OBSERVATIONS AND TESTING:

- A. FIELD OBSERVATIONS WILL BE PERFORMED BY ENGINEER AND ALL FIELD TESTING OF MATERIALS WILL BE PERFORMED BY AN INDEPENDENT TESTING LABORATORY. THE COST OF PASSING TESTS WILL BE PAID BY OWNER. FAILING TESTS SHALL BE PAID BY THE CONTRACTOR.
- B. FOR TESTS SPECIFIED TO BE MADE BY THE CONTRACTOR (FOR EQUIPMENT/MATERIAL PRIOR TO DELIVERY TO THE PROJECT SITE), THE TESTING PERSONNEL SHALL MAKE THE NECESSARY INSPECTIONS AND TESTS AND THE REPORTS THEREOF SHALL BE IN SUCH FORM AS WILL FACILITATE CHECKING TO DETERMINE COMPLIANCE WITH THE CONTRACT DOCUMENTS. COPIES OF THE REPORTS SHALL BE SUBMITTED AND AUTHENTICATIVE CERTIFICATION THEREOF MUST BE FURNISHED TO THE ENGINEER AS A PREREQUISITE FOR THE ACCEPTANCE OF ANY MATERIAL OR EQUIPMENT.
- C. IF, IN THE MAKING OF ANY TEST OF ANY MATERIAL, IT IS ASCERTAINED BY THE ENGINEER THAT THE MATERIAL DOES NOT COMPLY WITH THE CONTRACT, THE CONTRACTOR WILL BE NOTIFIED THEREOF AND WILL BE DIRECTED TO REFRAIN FROM DELIVERING SAID MATERIAL, OR TO REMOVE IT PROMPTLY FROM THE SITE OR FROM THE WORK AND REPLACE IT WITH ACCEPTABLE MATERIAL, WITHOUT ADDITIONAL COST TO THE OWNER.
- D. THE CONTRACTOR SHALL BE FULLY RESPONSIBLE FOR THE PROPER OPERATION OF MATERIAL DURING TESTS AND CONSTRUCTION PERIODS AND SHALL NEITHER HAVE NOR MAKE ANY CLAIM FOR DAMAGE THAT MAY OCCUR TO MATERIAL PRIOR TO THE TIME WHEN THE OWNER FORMALLY TAKES OVER THE OPERATION THEREOF.
- E. CONTRACTOR IS RESPONSIBLE FOR SCHEDULING FIELD TESTING.
- F. PIPE TRENCHES SHALL BE TESTED AT RANDOMLY SELECTED LOCATIONS ALONG THE LENGTH OF EACH PIPE RUN WITHIN EACH 300' INTERVAL (MAXIMUM) AND BETWEEN EACH SET OF TWO STRUCTURES IF A PIPE RUN SEPARATING THE TWO IS LESS THAN 300' IN LENGTH.
- G. ALL PIPE AND STRUCTURE TRENCHES SHALL BE BACKFILLED USING A MAX. OF 12" LIFTS. ALL BACKFILL MATERIAL SHALL BE CLEAN, DRY STRUCTURAL FILL, WITH NO DELETERIOUS OR ORGANIC MATERIAL PRESENT.
- H. AT LEAST ONE TEST SHALL BE PERFORMED FOR EVERY 12" OF DEPTH, STARTING AT THE SPRINGLINE OF THE PIPE, COVERING THE 12" LAYER BELOW THE SPRINGLINE OF THE PIPE. 1. TESTS SHALL BE PERFORMED AT EVERY STRUCTURE BEGINNING AT THE BASE OF THE STRUCTURE (COVERING THE 12" BELOW THE BASE OF THE STRUCTURE) WITH ONE TEST FOR EVERY 12" LIFT. TESTS SHALL ALTERNATE FROM CORNER TO CORNER OR FROM SIDE TO SIDE AROUND THE STRUCTURE WITH EACH 12" LIFT.
- J. SUBGRADE COMPACTION SHALL BE CHECKED AT 200 FOOT INTERVALS.
- K. FOR CURB AND SIDEWALK CHECK CONCRETE SLUMP AND OBTAIN A SET OF TEST CYLINDERS EVERY 800-1000 FEET.
- L. BASE ROCK - ANALYZE MATERIAL WHEN IT IS DELIVERED TO THE SITE FOR COMPLIANCE WITH THE SPECIFICATIONS. CHECK COMPACTION AT 300 FOOT INTERVALS BUT ALTERNATE LEFT SIDE TO RIGHT SIDE.
- M. ASPHALT - VERIFY ASPHALT TEMPERATURE AT ARRIVAL TO SITE TO VERIFY COMPLIANCE WITH MIX DESIGN.
- N. ALL DENSITY TESTS SHALL BE SIGNED AND SEALED BY A REGISTERED PROFESSIONAL GEOTECHNICAL ENGINEER, LICENSED IN THE STATE OF FLORIDA.
- O. ALL TESTS AND LOCATIONS ARE SUBJECT TO REVIEW BY REPRESENTATIVES OF OUR OFFICE AND ADDITIONAL TESTS MAY BE REQUIRED BASED ON FIELD OBSERVATIONS OF CONSTRUCTION TECHNIQUES OR MATERIALS USED ON SITE.

11. SALVAGE MATERIAL:

- A. ALL SALVAGEABLE MATERIAL AND EQUIPMENT REMOVED FROM THE EXISTING CONSTRUCTION FOR WHICH SPECIFIC USE, RELOCATION OR OTHER DISPOSAL IS NOT SPECIFICALLY NOTED ON THE DRAWINGS OR OTHERWISE SPECIFIED, SHALL REMAIN THE PROPERTY OF THE OWNER AND SHALL BE TURNED OVER TO HIM. ALL MATERIAL AND EQUIPMENT NOT IN SALVAGEABLE CONDITION AS DETERMINED BY THE ENGINEER, SHALL BE DISPOSED OF BY THE CONTRACTOR IN A LEGAL MANNER AT THE CONTRACTOR'S EXPENSE. THE ACTUAL STORAGE SITE FOR SALVAGEABLE MATERIAL WILL BE DESIGNATED BY THE OWNER.

12. CLEANING:

- A. DURING CONSTRUCTION OF THE WORK, THE CONTRACTOR SHALL, AT ALL TIMES, KEEP THE SITE OF THE WORK AND ADJACENT PREMISES AS FREE FROM MATERIAL, DEBRIS AND RUBBISH AS IS PRACTICABLE AND SHALL REMOVE THE SAME FROM ANY PORTION OF THE SITE IF, IN THE OPINION OF THE ENGINEER, SUCH MATERIAL, DEBRIS, OR RUBBISH CONSTITUTES A NUISANCE OR IS OBSCURABLE.
- B. AT THE CONCLUSION OF THE WORK, ALL TOOLS, TEMPORARY STRUCTURES AND MATERIALS BELONGING TO THE CONTRACTOR SHALL BE PROMPTLY TAKEN AWAY AND CONTRACTOR SHALL REMOVE AND PROMPTLY DISPOSE OF ALL RUBBISH OR ANY OTHER FOREIGN MATERIALS. THE CONTRACTOR SHALL THOROUGHLY CLEAN ALL MATERIAL INSTALLED AND SHALL DELIVER SUCH MATERIALS UNDAMAGED IN A CLEAN AND NEW CONDITION.

REVISIONS		NO.	DATE	REMARKS	BY

©COPYRIGHT 2020 BY THIS DRAWING IS PROVIDED FOR INFORMATIONAL PURPOSES ONLY, UNLESS SIGNED AND SEALED BY A LICENSED PROFESSIONAL ENGINEER. ENGENTUITY GROUP, INC.

ADAM C. SWANEY, P.E.
NO. 72235

CHATEAU WOOD
3640 VILLAGE DRIVE
DELRAY BEACH, FLORIDA
NOTES

A Higher Standard of Excellence

engenuity inc.
ENGINEERS • ARCHITECTS • EIR SUPPORTERS • GROUP INC.

1285 N. COURSENE AVE. SUITE 101
WEST PALM BEACH, FLORIDA 33409
PH: (561)655-1151 • FAX: (561)652-9390
WWW.ENGENTUITYGROUP.COM CERTIFICATE OF AUTHORIZATION #7095

DATE	10/11/2020
DRAWN	KAK
PROJECT ENGINEER	KAK
PROJECT MANAGER	ACS
CHECKED	KBJ
JOB NO. 19158.01	