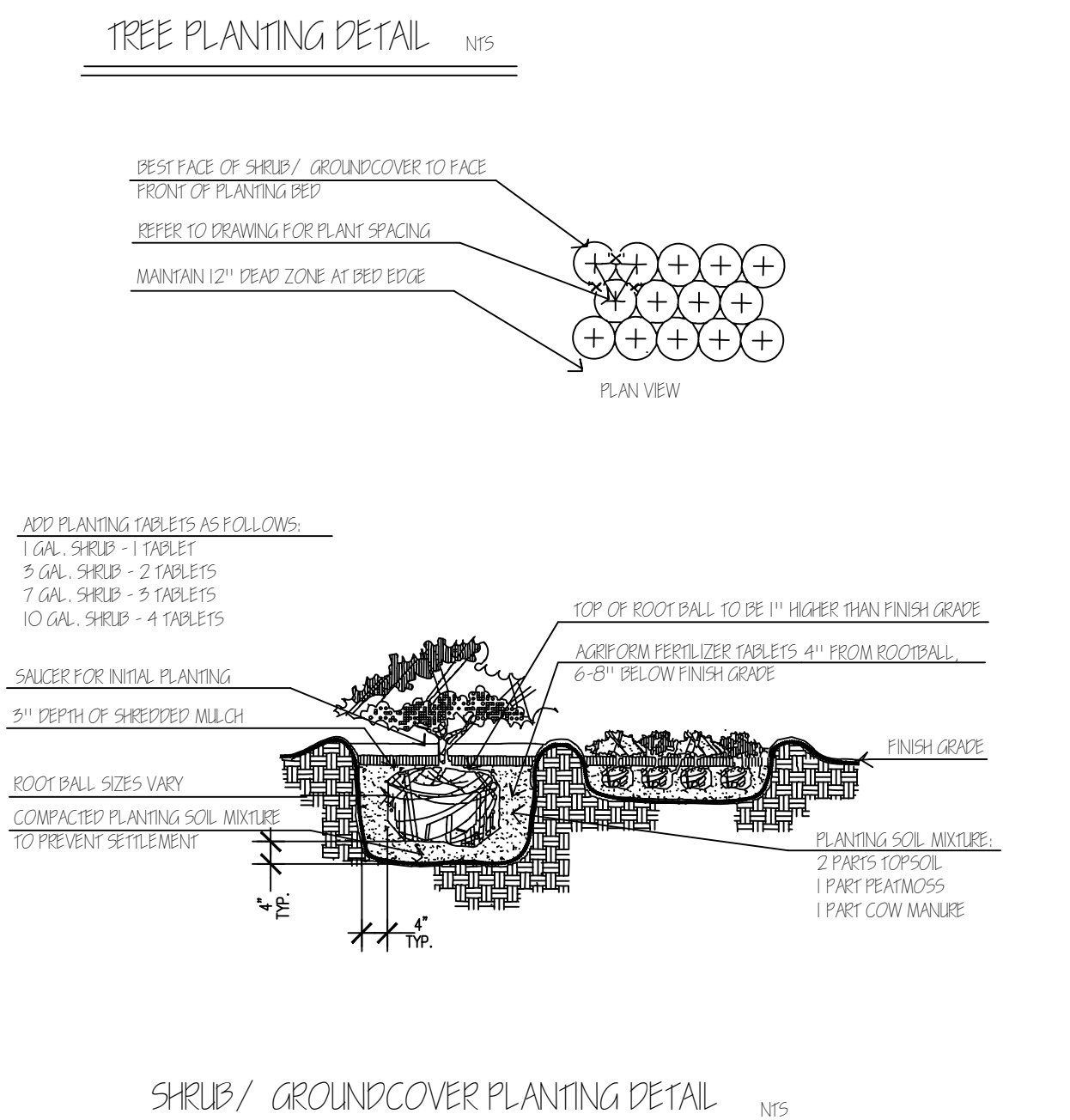
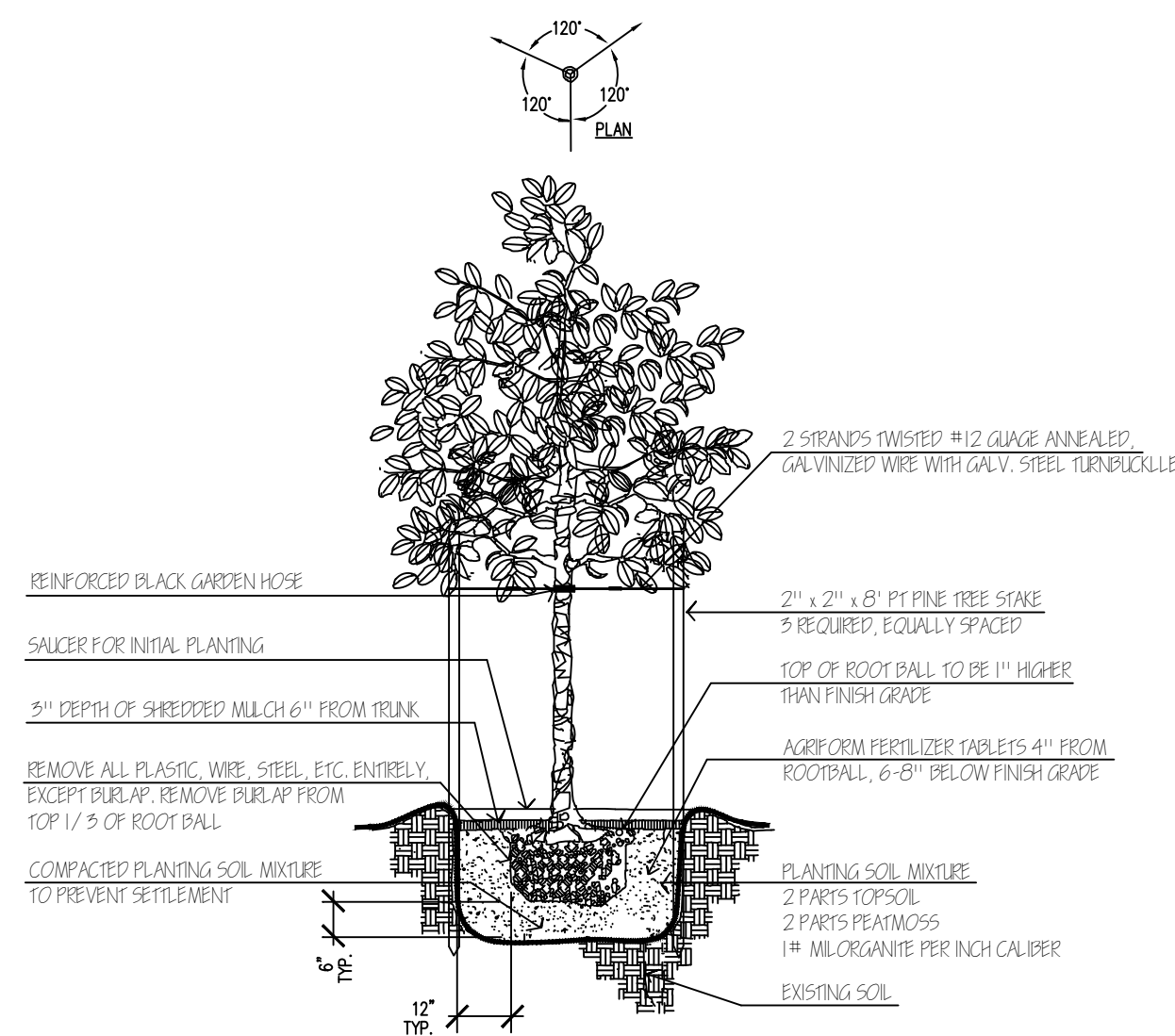
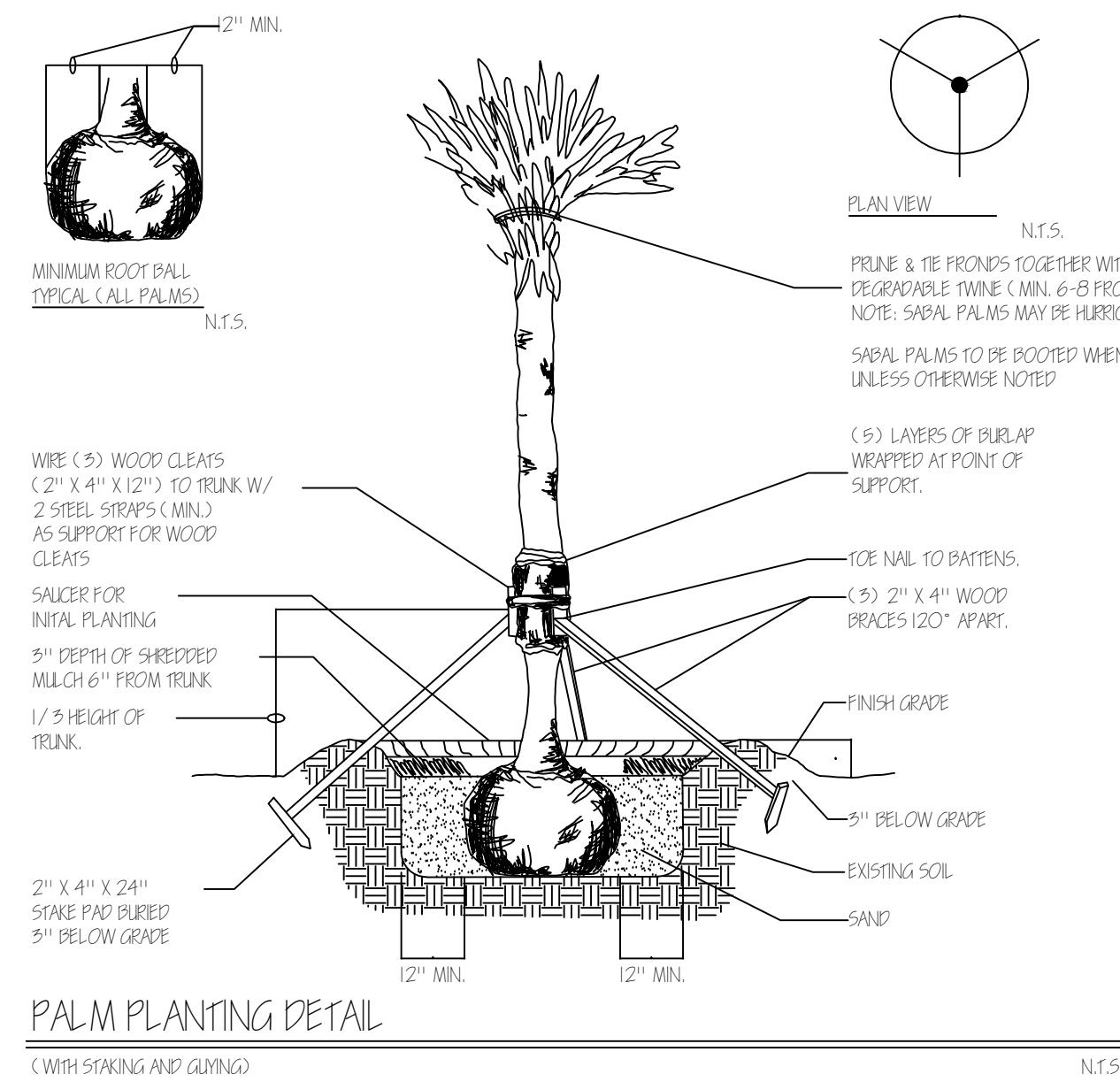


WILLIAM A. FLINT  
STATE OF FLORIDA  
#941  
REGISTERED LANDSCAPE ARCHITECT

SEAL

SHEET 11 OF 1



## LANDSCAPE NOTES

ALL LANDSCAPE MATERIAL TO BE FLA. #1 OR BETTER  
FLORITAM OR BAHIA SOD AS REQUIRED  
MALAUECA OR EUCALYPTUS MULCH (NO CYPRESS) AS REQUIRED TO 3" THICKNESS MINIMUM IN ALL PLANT BEDS  
FULLY AUTOMATIC IRRIGATION SYSTEM TO PROVIDE 100% COVERAGE IN 15 MPH WIND  
ALL PROHIBITED SPECIES SHALL BE REMOVED FROM SITE PRIOR TO ISSUANCE OF CERTIFICATE OF OCCUPANCY  
(INCLUDING ALL "FLEPPC" LISTED SPECIES)

SOD AND IRRIGATION SHALL BE PROVIDED WITHIN THE UNPAVED PORTION OF THE RIGHT-OF-WAY ADJACENT TO THE PROPERTY LINE

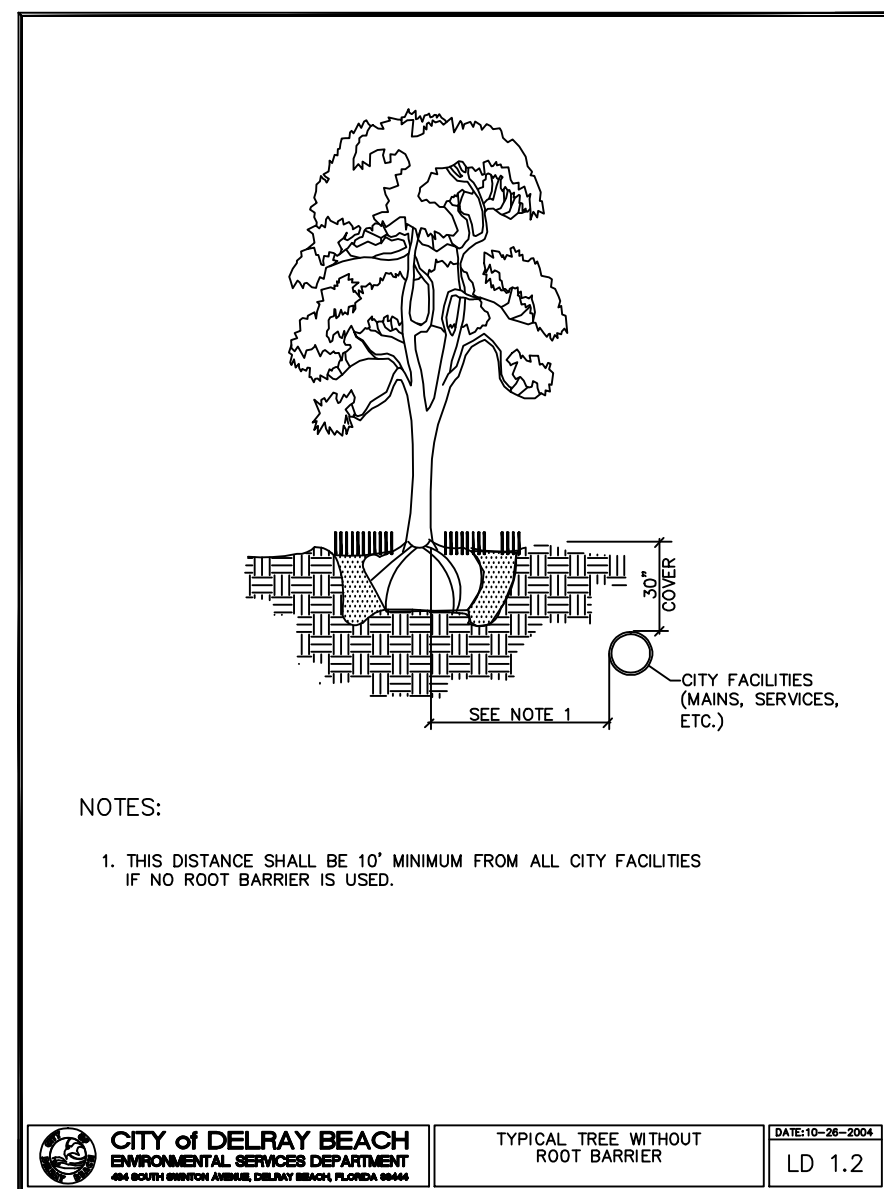
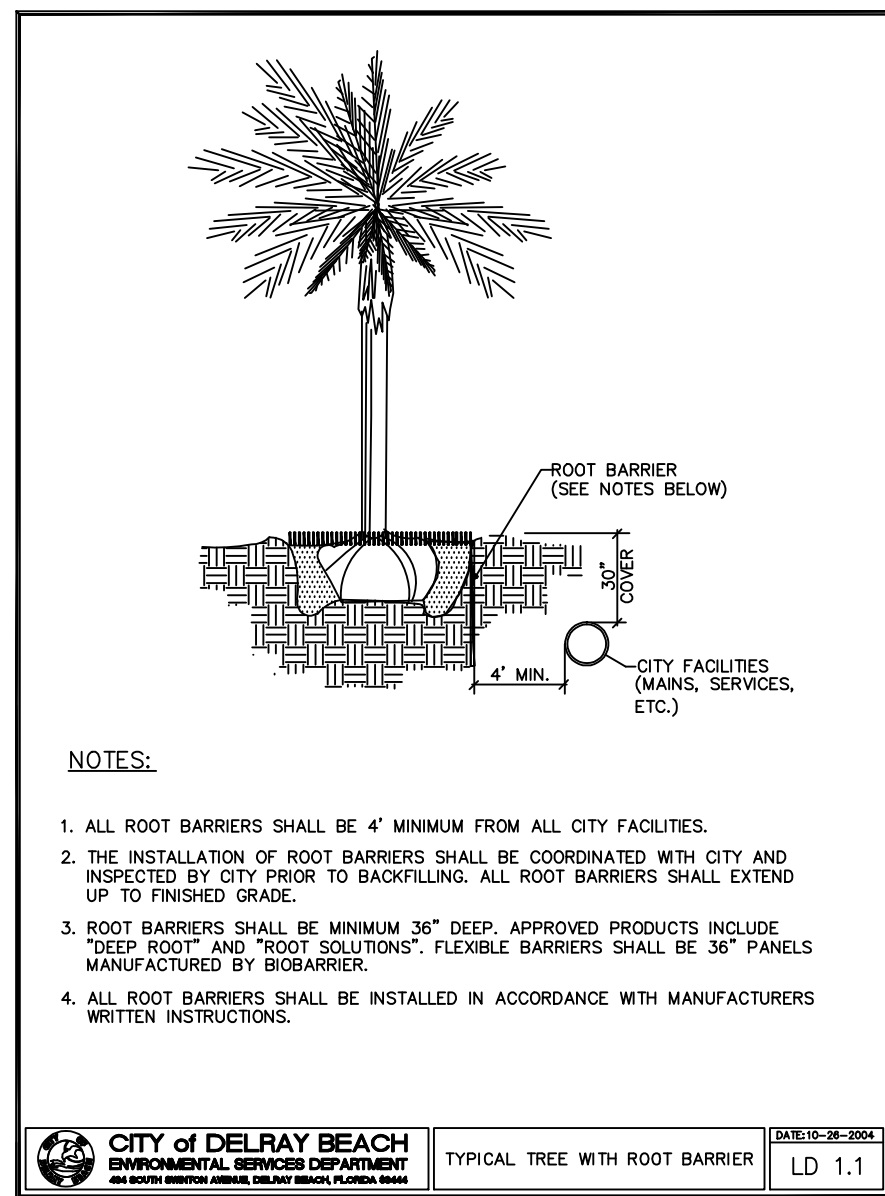
REINFORCED CONCRETE CURBING AT LEAST 6" IN HEIGHT SHALL BE PROVIDED AROUND ALL LANDSCAPE ISLANDS AND AS A SEPARATOR BETWEEN ALL LANDSCAPED AREAS THAT ARE ADJACENT TO VEHICULAR USE AREAS UNLESS SUCH CURBING WILL INTERFERE WITH THE DRAINAGE.

ALL NEW LANDSCAPING WITHIN UTILITY EASEMENTS AND WITHIN TEN (10) FEET OF UNDERGROUND UTILITY INFRASTRUCTURE SHALL COMPLY WITH CHAPTER 15.3 OF THE CITY'S CODE OF ORDINANCES AND PSUEDO UTILITY STANDARDS, DETAILS, AND POLICIES. NO LANDSCAPING SHALL BE PLANTED IN SUCH A MANNER AS TO ADVERSELY AFFECT UTILITY INSTALLATION, OPERATION OR MAINTENANCE.

NO LANDSCAPING OTHER THAN SOD GRASSES MAY BE PLANTED WITHIN A FIVE (5) FOOT RADIAL MAINTENANCE AREA OF ANY UTILITY APPURTENANCES SUCH AS WATER METERS, BACKFLOW DEVICES, FIRE HYDRANTS, SANITARY SEWER CLEANOUTS, AND MANHOLES, AIR RELEASE VALVES, ETC. TREES SHALL NOT BE PLANTED WITHIN TEN (10) FEET OF ANY PULSED INFRASTRUCTURE. ALL MEASUREMENTS ARE FROM OUTSIDE TO OUTSIDE, NOT CENTERLINE TO CENTERLINE. EXAMPLE: OUTSIDE OF PIPE TO NEAREST POINT ON TREE TRUNK. TREES SHALL NOT BE PLANTED WITHIN TEN (10) FEET OF ANY USED MOW OR APPURTENANCE.

EXISTING NATIVE SOILS SHALL BE REMOVED FROM LANDSCAPE ISLANDS & INTERIOR LANDSCAPE STRIPS TO A DEPTH OF 30" BELOW EX. GRADE. A PLANTING MIXTURE OF  $\frac{50}{50}$  (SAND/ TOPSOIL) SHALL BE BACKFILLED IN PLACE. ROCKS GREATER THAN 1/ 2" DIA. SHALL BE REMOVED. AN OPEN LANDSCAPE BED INSPECTION SHALL BE REQUIRED.

A LANDSCAPE MAINTENANCE AGREEMENT SHALL BE PROVIDED BY THE OWNER FOR THE PROPOSED STREET TREES BETWEEN THE SIDEWALK AND THE EDGE OF PAVEMENT (OUTSIDE PROPERTY LINES)



## PLANT & MATERIAL SCHEDULE

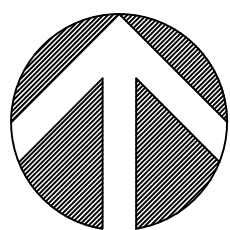
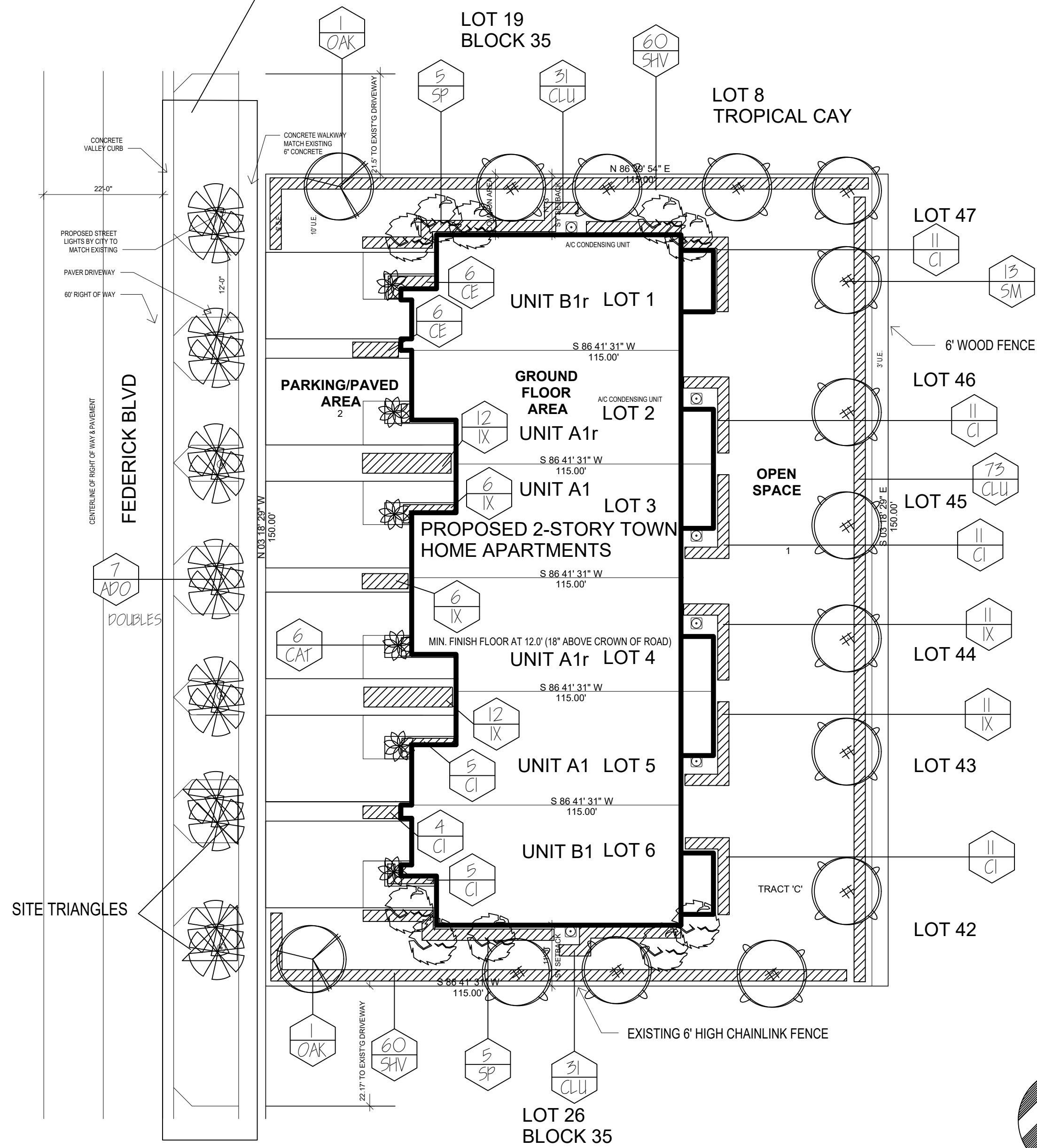
KEY	QUAN.	NATIVE	DROUGHT TOLERANCE	BOTANICAL NAME	COMMON NAME	SIZE (HT. x SPR.)	CONTAINER
ADO	7	N	MOD.	VEITCHIA MERILLI	ADONIDIA PALM (DOUBLE)	16' O.A., 8'C.T. (DOUBLE)	B & B
CE	12	Y	VERY	CONOCARPUS ERECTUS	GREEN BUTTONTWOOD	24" x 18"	#3
CI	5B	Y	VERY	CHRYSOBALANUS ICACO	COCOPLUM	24" x 18"	#3
CAT	6	N	MOD.	CHAMAEDOREA CATARACTARUM	CAT PALM	4' x 4'	#25
CLU	155	Y	MOD.	CLUSIA FLAVA	CLUSIA (PITCH APPLE)	24" x 18"	#3
-	-	-	-	-	-	-	-
-	-	-	-	-	-	-	-
IX	5B	N	MOD.	IXORA 'NORA GRANT'	IXORA	24" x 18"	#3
-	-	-	-	-	-	-	-
OAK	2	Y	VERY	QUERCUS VIRGINIANA	LIVE OAK	16' x 7' O.A., 8' C.T.	B & B
SM	13	Y	MOD.	SWEETENIA MAHAGONI	MAHOGANY	16' x 7' O.A., 8' C.T.	B & B
SHV	120	N	MOD.	SCHEFFLERA ARBORICOLA 'VARIG.'	DWARF VARIEGATED SCHEFFLERA	24" x 18"	#3
SP	10	Y	VERY	SABAL PALMETTO	SABAL PALM (10' C.T. MIN.)	1/3 - 18, 20, 22' O.A.	B & B
-	-	-	-	-	-	-	-
-	-	-	-	-	-	-	-
-	-	-	-	-	-	-	-
-	-	-	-	-	-	-	-
-	-	-	-	-	-	-	-

THIS LANDSCAPE PLAN MEETS FDOT SIGHT DISTANCE AND CLEAR ZONE REQUIREMENTS  
ALL GROUND MOUNTED MECHANICAL EQUIPMENT TO BE SCREENED WITH SHRUBS

# Area Tabulation

SITE AREA		17,251 SF
MIN. OPEN SPACE REQUIRED	25.00%	
GROUND FLOOR AREA (40% MAX)	36.75%	6,340 SF
OPEN SPACE	48.12%	8,300 SF
PARKING/PAVED AREA	15.30%	2,626 SF

# STREET TREES INSIDE WINDOW



ELECTRONIC SEAL AFFIXED  
BY AUTHOR 10.22.2020

OFF 29  
HAT IOC