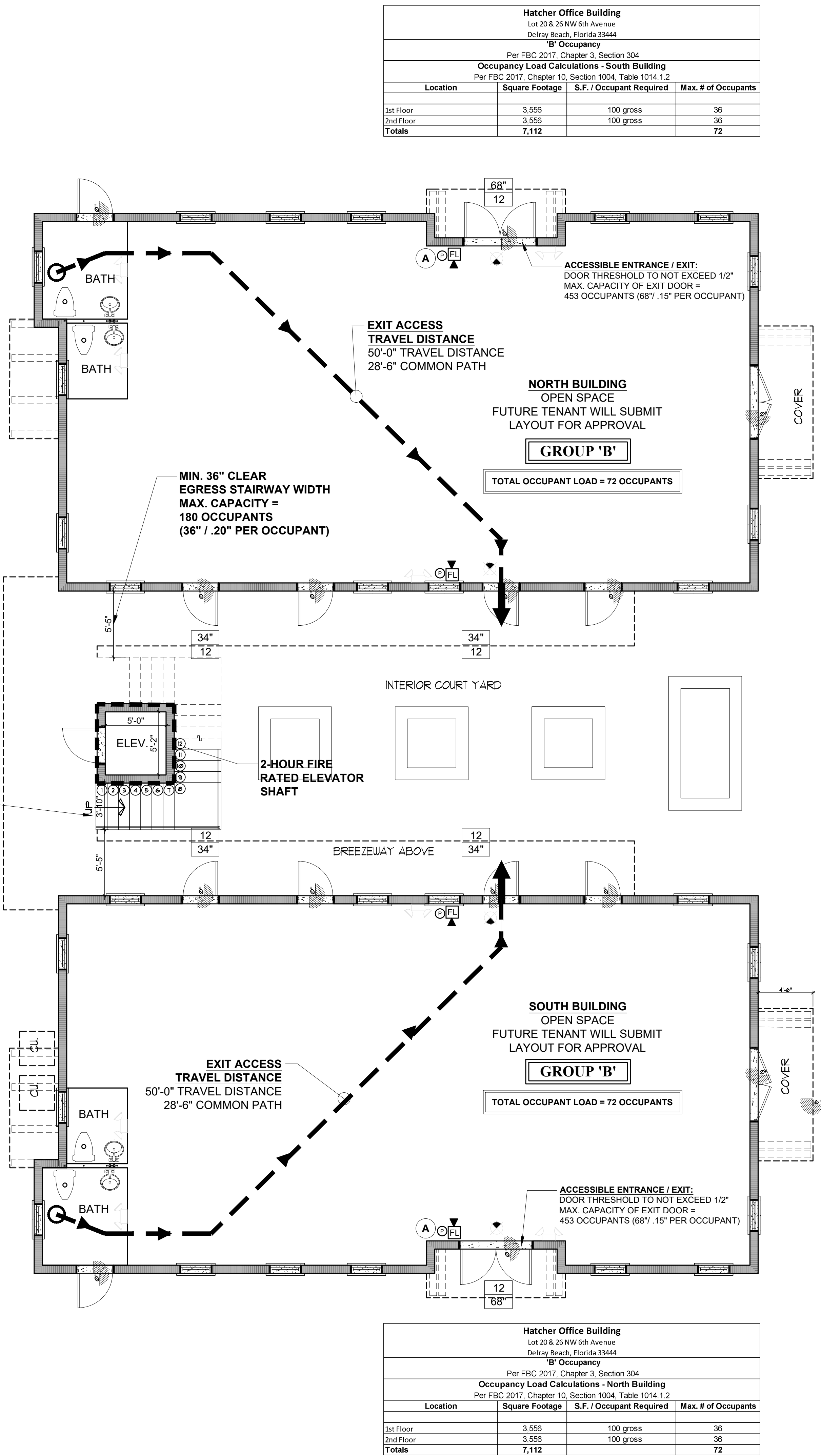


EXIT REQUIREMENTS (NORTH BUILDING)							
SPACE	OCCUPANCY CLASS	OCCUPANT LOAD	SPRINKLERED	MIN. # OF EXITS REQUIRED (SEE NOTES ON SHEET LS1)	# OF EXITS PROVIDED	MIN. SEPARATION OF EXITS REQUIRED	SEPARATION OF EXITS PROVIDED
BUSINESS	B	1ST FLOOR = 36	NO	1ST FLOOR = 1	1ST FLOOR = 3	N/A	N/A
		2ND FLOOR = 36		2ND FLOOR = 1	2ND FLOOR = 2		
MAX. EXIT ACCESS TRAVEL DISTANCE REQUIRED	EXIT ACCESS TRAVEL DISTANCE PROVIDED	MAX. COMMON PATH OF EGRESS TRAVEL REQUIRED	COMMON PATH OF EGRESS TRAVEL PROVIDED	EGRESS WIDTH REQUIRED OTHER COMPONENTS = .15" (IN INCHES)	EGRESS WIDTH PROVIDED OTHER COMPONENTS (IN INCHES)		
200'-0"	1ST FLOOR = 49'-0" 2ND FLOOR = 94'-8"	75'-0"	1ST FLOOR = 28'-6" 2ND FLOOR = 28'-5"	1ST FLOOR = 5.4" (.15"x36) 2ND FLOOR = 5.4" (.15"x36)	1ST FLOOR = 136" (4 DR. @ 36" EA.) 2ND FLOOR = 68" (2 DR. @ 36" EA.)		
<u>EGRESS DOOR NOTES:</u>							
1. ALL DOORS SHALL SWING IN THE DIRECTION OF EGRESS TRAVEL WHERE SERVING AN OCCUPANT LOAD OF 50 OR MORE PERSONS OR A GROUP H OCCUPANCY.							
2. ALL DOORS REQUIRED TO BE ACCESSIBLE TO HAVE A CLEAR OPENING WIDTH OF 32" WITH THE DOOR OPENED 90 DEGREES, MEASURED BETWEEN THE FACE OF THE DOOR & THE OPPOSITE STOP.							
3. MULTIPLE MEANS OF EGRESS SHALL BE SIZED SUCH THAT THE LOSS OF ANY ONE MEANS OF EGRESS SHALL NOT REDUCE THE AVAILABLE CAPACITY TO LESS THAN 50% OF THE REQUIRED CAPACITY.							
4. MAINTAIN A MINIMUM OF 12" CLEAR SPACE ON THE PUSH SIDE & 18" CLEAR SPACE ON THE PULL SIDE OF DOORS PER 2017 FLORIDA ACCESSIBILITY CODE.							
5. ALL THRESHOLDS AT DOORS NOT TO EXCEED 1/2". RAISED THRESHOLDS & FLOOR LEVEL CHANGES AT ACCESSIBLE DOORWAYS SHALL BE BEVELED w/ SLOPE NO GREATER THAN 1:2.							
6. WHERE A BUILDING IS EQUIPPED THROUGHOUT WITH AN AUTOMATIC SPRINKLER SYSTEM IN ACCORDANCE WITH SECTION 903.3.1.1 OR 903.3.1.2, THE SEPARATION DISTANCE OF THE EXIT DOORS OR EXIT ACCESS DOORWAYS SHALL NOT BE LESS THAN 1/3 OF THE LENGTH OF THE MAXIMUM OVERALL DIAGONAL DIMENSION OF THE AREA SERVED. FBC2017, SECTION 1007.1.1, EXCEPTION #2.							

LIFE SAFETY PLAN LEGEND		FIRE EXTINGUISHERS	
NUMBER OF OCCUPANTS EXITING THROUGH DOOR OPENING ##		BUSINESS AREA	
EXIT CAPACITY OF DOOR OPENING (IN INCHES) ##		CLASS A - ORDINARY (MODERATE) HAZARD	
DIRECTION OF EGRESS TRAVEL -->		MIN. 2-A RATED SINGLE EXTINGUISHER MAX. 1,500 SF AREA PER UNIT OF A. MAX. 11,250 S.F. OF FLOOR FLOOR AREA PER FIRE EXTINGUISHER MAX. 75'-0" TRAVEL DISTANCE TO FIRE EXTINGUISHER	
POINT OF EXIT DISCHARGE -->		MIN. OF TWO (2), 2-A RATED FIRE EXTINGUISHER REQUIRED FOR 3,790 S.F.	
STARTING POINT OF EXIT ACCESS/ COMMON PATH OF EGRESS TRAVEL DISTANCE O		VERIFY EXISTING EXTINGUISHER IS IN GOOD WORKING ORDER & HAS CURRENT INSPECTION TAGS. IF NOT, PROVIDE NEW.	
75'-0" MAX. TRAVEL DISTANCE TO REACH AN EXIT T.D.---		LARSEN 2409-5R OR APPROVED EQUAL MULTIPURPOSE DRY CHEMICAL TYPE : MP5, 5 LBS. UL 2A-10B-C, ON STANDARD WALL HUNG BRACKET	
FIRE ALARM HORN & FLASHING STROBE LIGHT COMBINATION FL		FIRE EXTINGUISHER SHOULD BE MOUNTED MINIMUM 4 INCHES AND MAXIMUM 27" FROM FLOOR, IF FIRE EXTINGUISHER IS LESS THAN 40 LBS. IN WEIGHT.	
FIRE ALARM PULL STATION O			
EXIT SIGN w/ EMERGENCY LIGHT & BATTERY BACK-UP -->			
EXIT SIGN (DUAL SIDED) w/ EMERGENCY LIGHT & BATTERY BACK-UP -->			
EXIT SIGNS TO BE LED EXIT/EMERGENCY COMBO, WALL/CEILING MOUNT w/ 90 MIN BATTERY BACK-UP. ALL SIGNS TO BE PLACED NO LESS THAN 80" AFF TO BOTTOM OF FIXTURE (w/ DIRECTIONAL ARROWS IF SHOWN ON PLAN)			
RAISED CHARACTER & BRAILLE EXIT SIGNS: A SIGN STATING 'EXIT' IN RAISED CHARACTERS AND BRAILLE COMPLYING WITH ICC A117.1 SHALL BE PROVIDED ADJACENT TO EACH DOOR TO AN AREA OF REFUGE, AN EXTERIOR AREA FOR ASSISTED RESCUE, AN EXIT STAIRWAY, AN EXIT RAMP, AN EXIT PASSAGEWAY, AND THE EXIT DISCHARGE. EXIT SIGN MUST BE INSTALLED ON THE WALL ADJACENT TO THE LATCH SIDE OF THE DOOR @ 60" A.F.F. TO THE CENTERLINE OF THE SIGN. BRAILLE LETTERING ALSO USED FOR VISION IMPAIRED PERSONS.			
MINI LED ADJUSTABLE TWO-HEAD EMERGENCY/EGRESS LIGHT w/ 90 MIN BATTERY BACK-UP -->			

EXIT REQUIREMENTS (SOUTH BUILDING)							
SPACE	OCCUPANCY CLASS	OCCUPANT LOAD	SPRINKLERED	MIN. # OF EXITS REQUIRED (SEE NOTES ON SHEET LS1)	# OF EXITS PROVIDED	MIN. SEPARATION OF EXITS REQUIRED	SEPARATION OF EXITS PROVIDED
BUSINESS	B	1ST FLOOR = 36	NO	1ST FLOOR = 1	1ST FLOOR = 3	N/A	N/A
		2ND FLOOR = 36		2ND FLOOR = 1	2ND FLOOR = 2		
MAX. EXIT ACCESS TRAVEL DISTANCE REQUIRED	EXIT ACCESS TRAVEL DISTANCE PROVIDED	MAX. COMMON PATH OF EGRESS TRAVEL REQUIRED	COMMON PATH OF EGRESS TRAVEL PROVIDED	EGRESS WIDTH REQUIRED OTHER COMPONENTS = .15" (IN INCHES)	EGRESS WIDTH PROVIDED OTHER COMPONENTS (IN INCHES)		
200'-0"	1ST FLOOR = 50'-0" 2ND FLOOR = 117'-6"	75'-0"	1ST FLOOR = 28'-6" 2ND FLOOR = 22'-4"	1ST FLOOR = 5.4" (.15"x36) 2ND FLOOR = 5.4" (.15"x36)	1ST FLOOR = 136" (4 DR. @ 36" EA.) 2ND FLOOR = 68" (2 DR. @ 36" EA.)		
<u>EGRESS DOOR NOTES:</u>							
1. ALL DOORS SHALL SWING IN THE DIRECTION OF EGRESS TRAVEL WHERE SERVING AN OCCUPANT LOAD OF 50 OR MORE PERSONS OR A GROUP H OCCUPANCY.							
2. ALL DOORS REQUIRED TO BE ACCESSIBLE TO HAVE A CLEAR OPENING WIDTH OF 32" WITH THE DOOR OPENED 90 DEGREES, MEASURED BETWEEN THE FACE OF THE DOOR & THE OPPOSITE STOP.							
3. MULTIPLE MEANS OF EGRESS SHALL BE SIZED SUCH THAT THE LOSS OF ANY ONE MEANS OF EGRESS SHALL NOT REDUCE THE AVAILABLE CAPACITY TO LESS THAN 50% OF THE REQUIRED CAPACITY.							
4. MAINTAIN A MINIMUM OF 12" CLEAR SPACE ON THE PUSH SIDE & 18" CLEAR SPACE ON THE PULL SIDE OF DOORS PER 2017 FLORIDA ACCESSIBILITY CODE.							
5. ALL THRESHOLDS AT DOORS NOT TO EXCEED 1/2". RAISED THRESHOLDS & FLOOR LEVEL CHANGES AT ACCESSIBLE DOORWAYS SHALL BE BEVELED w/ SLOPE NO GREATER THAN 1:2.							
6. WHERE A BUILDING IS EQUIPPED THROUGHOUT WITH AN AUTOMATIC SPRINKLER SYSTEM IN ACCORDANCE WITH SECTION 903.3.1.1 OR 903.3.1.2, THE SEPARATION DISTANCE OF THE EXIT DOORS OR EXIT ACCESS DOORWAYS SHALL NOT BE LESS THAN 1/3 OF THE LENGTH OF THE MAXIMUM OVERALL DIAGONAL DIMENSION OF THE AREA SERVED. FBC2017, SECTION 1007.1.1, EXCEPTION #2.							



LIFE SAFETY NOTES	
SQUARE FOOTAGES AND SIZES NOTED ON THE OCCUPANCY LOAD SCHEDULE ARE PER CURRENT PLANS. ACTUAL SIZES MAY VARY THRU THE CONSTRUCTION PROCESS. IT IS THE CONTRACTOR'S RESPONSIBILITY TO VERIFY SIZES AND SQUARE FOOTAGES BEFORE ORDERING CONSTRUCTION MATERIALS.	
ALL ASSEMBLY OCCUPANCY ROOMS/SPACES SHALL HAVE THE OCCUPANT LOAD OF THE ROOM OR SPACE POSTED IN A CONSPICUOUS LOCATION - NEAR THE MAIN EXIT OR EXIT ACCESS DOORWAY FROM THE ROOM OR SPACE. POSTED SIGNS SHALL BE OF AN APPROVED LEGIBLE PERMANENT DESIGN AND SHALL BE MAINTAINED BY THE OWNER/AGENT PER FBC 2014 1004.3	
ALL BUILDING ENTRANCES SHALL BE ACCESSIBLE AND COMPLY WITH FBC 2017 ACCESSIBILITY.	
INTERIOR FINISHES TO COMPLY WITH THE REQUIREMENTS OF THE FLORIDA FIRE PREVENTION CODE, NFPA 101, CHAPTER 10	
INTERIOR FLOOR FINISH SHALL COMPLY WITH NFPA 101, SECTION 10.2	
INTERIOR WALL AND CEILING FINISH MATERIALS COMPLYING WITH NFPA 101, SECTION 10.2 SHALL BE CLASS A OR CLASS B IN GENERAL ASSEMBLY AREAS THAT HAVE AN OCCUPANT LOAD OF MORE THAN 300.	
PER NFPA 101, 10.2.8.1, AND UNLESS SPECIFICALLY PROHIBITED ELSEWHERE IN THE CODE, WHERE AN APPROVED AUTOMATIC SPRINKLER SYSTEM IS IN ACCORDANCE WITH SECTION 9.7, CLASS C INTERIOR WALL AND CEILING FINISH MATERIALS SHALL BE PERMITTED IN ANY LOCATION WHERE CLASS B IS REQUIRED, AND CLAD B INTERIOR WALL AND CEILING FINISH MATERIALS SHALL BE PERMITTED IN ANY LOCATION WHERE CLASS A IS REQUIRED.	
EGRESS DOORS: ALL DOORS SHALL SWING IN THE DIRECTION OF EGRESS TRAVEL WHERE SERVING AN OCCUPANT LOAD OF 50 OR MORE PERSONS OR A GROUP H OCCUPANCY.	
ALL DOORS REQUIRED TO BE ACCESSIBLE TO HAVE A CLEAR OPENING WIDTH OF 32" WITH THE DOOR OPENED 90 DEGREES, MEASURED BETWEEN THE FACE OF THE DOOR & THE OPPOSITE STOP.	
MULTIPLE MEANS OF EGRESS SHALL BE SIZED SUCH THAT THE LOSS OF ANY ONE MEANS OF EGRESS SHALL NOT REDUCE THE AVAILABLE CAPACITY TO LESS THAN 50% OF THE REQUIRED CAPACITY.	
MAINTAIN A MINIMUM OF 12" CLEAR SPACE ON THE PUSH SIDE & 18" CLEAR SPACE ON THE PULL SIDE OF DOORS PER 2017 FLORIDA ACCESSIBILITY CODE, SECTION 404, TABLE 404.2.4.1.	
ALL THRESHOLDS AT DOORS NOT TO EXCEED 1/2". RAISED THRESHOLDS & FLOOR LEVEL CHANGES AT ACCESSIBLE DOORWAYS SHALL BE BEVELED w/ SLOPE NO GREATER THAN 1:2.	
BUILDING DATA	
CONSTRUCTION TYPE: V-8 NON-SPRINKLERED MAX. 2-STORIES & 9,000 S.F. MAX. 40'-0" HEIGHT (FBC2017, CHAPTER 5, TABLE 504.3, 504.4, & 506.2 & CHAPTER 6, SECTION 603)	
1. USE GROUP CLASSIFICATION: B - BUSINESS (FBC2017, CHAPTER 3, SECTION 304.1)	
2. TENANT AREA SQUARE FOOTAGE (FOR DETERMINING OCCUPANT LOAD)	
NORTH BUILDING: 1ST FLOOR: +3,556 GROSS S.F. 2ND FLOOR: +3,556 GROSS S.F. TOTAL: 7,112 GROSS S.F.	
SOUTH BUILDING: 1ST FLOOR: +3,556 GROSS S.F. 2ND FLOOR: +3,556 GROSS S.F. TOTAL: 7,112 GROSS S.F.	
3. CALCULATED OCCUPANT LOAD - NORTH BUILDING: 72 OCCUPANTS BASED ON +7,112 GROSS S.F. (SEE OCCUPANCY LOAD CALCULATION CHART, THIS SHEET)	
CALCULATED OCCUPANT LOAD - SOUTH BUILDING: 72 OCCUPANTS BASED ON +7,112 GROSS S.F. (SEE OCCUPANCY LOAD CALCULATION CHART, THIS SHEET)	
4. FIRE PROTECTION SYSTEMS: (FBC2017, CHAPTER 9, SECTION 903.2) a) SUPPRESSION SYSTEM: BUILDINGS NON-SPRINKLERED b) NOTIFICATIONS/ALARMS: REQUIRED c) DETECTION: REQUIRED	
5. CODES TO WHICH THIS PROJECT WAS DESIGNED: 2017 FLORIDA BUILDING CODE / BUILDING 2017 FLORIDA BUILDING CODE / FUEL GAS 2017 FLORIDA BUILDING CODE / MECHANICAL 2017 FLORIDA BUILDING CODE / PLUMBING 2017 FLORIDA BUILDING CODE / ACCESSIBILITY 2019 FLORIDA FIRE PREVENTION CODE - 6TH EDITION 2014 NATIONAL ELECTRIC CODE 2017 NFPA 101 - LIFE SAFETY CODE	
7. CORRIDOR FIRE-RESISTANCE RATING: 1-HOUR FIRE RATING REQUIRED w/ OCCUPANT LOAD GREATER THAN 30, w/o AUTOMATIC SPRINKLER PROTECTION. (FBC2017, CHAPTER 10, TABLE 1020.1)	
SEE EXIT REQUIREMENTS CHART FOR CALCULATIONS ON LIFE SAFETY PLAN SHEETS	
8. NUMBER OF EXITS REQUIRED: 1 PER STORY, OCCUPANT LOAD OF 49 OCCUPANTS OR LESS (FBC2017, CHAPTER 10, TABLE 1006.2.1) 1ST STORY OCCUPANT LOAD: 36 OCCUPANTS 2ND STORY OCCUPANT LOAD: 36 OCCUPANTS	
9. EXIT ACCESS TRAVEL DISTANCE: 200'-0" w/o AUTOMATIC SPRINKLER PROTECTION (FBC2017, CHAPTER 10, TABLE 1017.2)	
10. COMMON PATH OF EGRESS TRAVEL: 75'-0" w/o AUTOMATIC SPRINKLER PROTECTION, OCCUPANT LOAD GREATER THAN 30 (FBC2017, CHAPTER 10, TABLE 1006.3.2)	
11. DISTRIBUTION OF MINIMUM WIDTH AND REQUIRED CAPACITY: WHERE MORE THAN ONE EXIT, OR ACCESS TO MORE THAN ONE EXIT, IS REQUIRED, THE MEANS OF EGRESS SHALL BE CONFIGURED SUCH THAT THE LOSS OF ANY ONE EXIT, OR ACCESS TO ONE EXIT, SHALL NOT REDUCE THE AVAILABLE CAPACITY OR WIDTH TO LESS THAN 50 PERCENT OF THE REQUIRED CAPACITY OR WIDTH (FBC2017, CHAPTER 10, SECTION 1005.5)	
12. MINIMUM EGRESS WIDTH: STAIRWAYS = 0.30' PER OCCUPANT OTHER EGRESS COMPONENTS = .20' PER OCCUPANT w/o AUTOMATIC SPRINKLER PROTECTION (FBC2017, CHAPTER 10, SECTION 1005.3.1 & 1005.3.2)	
13. MINIMUM STAIRWAY WIDTH AND CAPACITY: 44" MINIMUM 36" MINIMUM (SERVING 50 OR LESS OCCUPANTS) (FBC2017, CHAPTER 10, TABLE 1011.2)	
14. MINIMUM CORRIDOR/ AISLE WIDTH: 36" MINIMUM (SERVING 50 OR LESS OCCUPANTS) 44" MINIMUM (SERVING 51 OR MORE OCCUPANTS) (FBC2017, CHAPTER 10, TABLE 1020.2)	
15. MINIMUM PLUMBING FIXTURE COUNT: BASED ON 72 OCCUPANTS PER BUILDING. (REFER TO PLUMBING FIXTURE REQUIREMENT TABLE ON THIS SHEET)	

1ST FLOOR
LIFE SAFETY PLAN
SCALE 3/16" = 1'-0"



PERMIT SET 02-25-20

REVISIONS		BY
START		JL 7-23-19
SPRAB REVISION		JL 8-19-20

HATCHER OFFICE BUILDING
LOT 20 & 26 NW 6TH AVE,
DELRAY BEACH, FLORIDA 33444

NORM PAUL, ARCHITECT
12119 SALINAS WAY
DELRAY BEACH FL, 33446
EMAIL: NORMPAUL@GMAIL.COM

AR92781



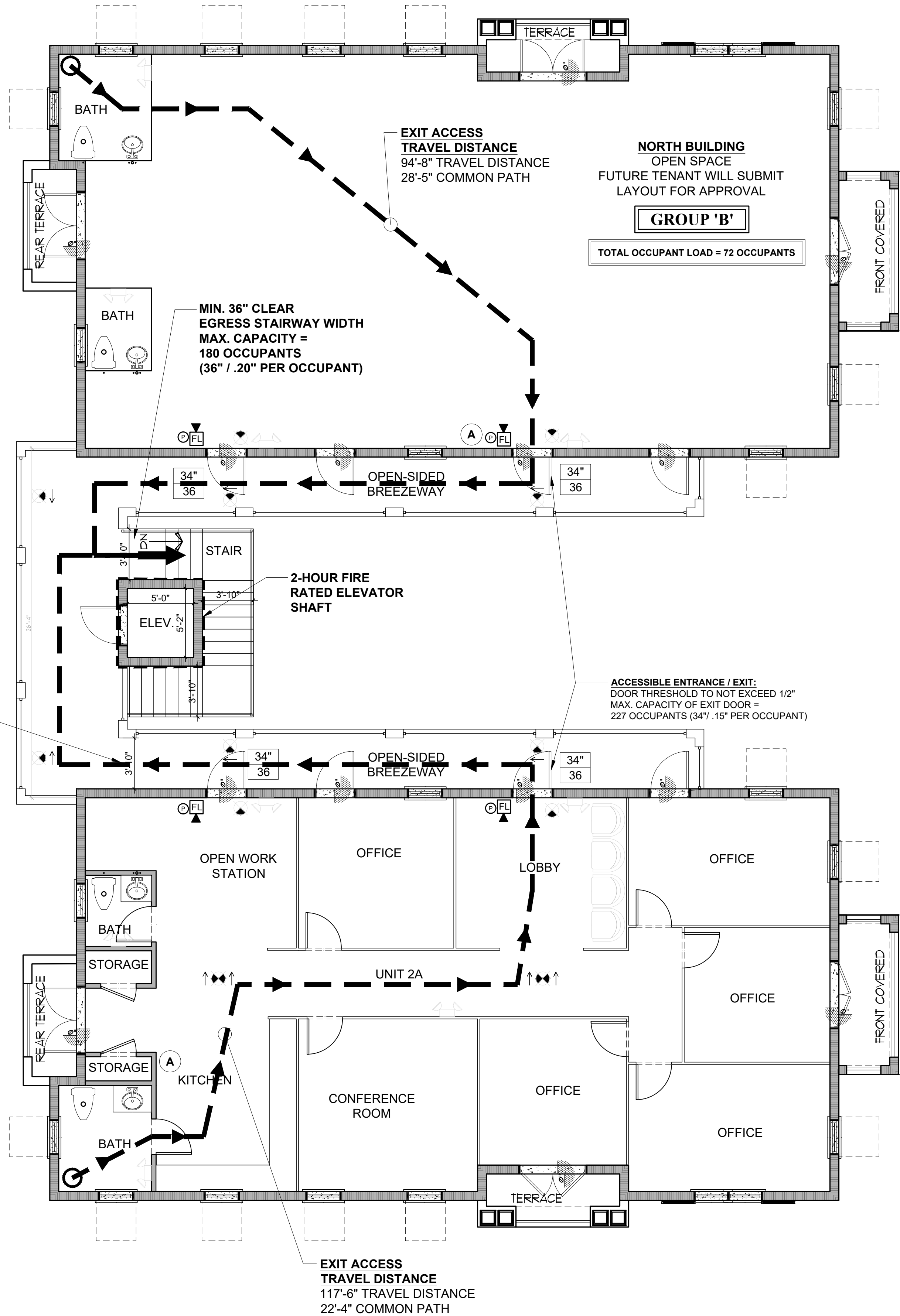
CLAY CUBE INC.
751 PARK OF COMMERCE DRIVE
SUITE #128 BOCA RATON FL, 33487
TEL: (561) 271-5441
EMAIL: CLAYCUBE@LVN.COM
DRAWN: JL
DATE: 02/11/20
SCALE: 1/4" = 1'-0"

SHEET
LS1
OF 7 SHEETS

EXIT REQUIREMENTS (NORTH BUILDING)							
SPACE	OCCUPANCY CLASS	OCCUPANT LOAD	SPRINKLERED	MIN. # OF EXITS REQUIRED (SEE NOTES ON SHEET LS1)	# OF EXITS PROVIDED	MIN. SEPARATION OF EXITS REQUIRED	SEPARATION OF EXITS PROVIDED
BUSINESS	B	1ST FLOOR = 36	NO	1ST FLOOR = 1	1ST FLOOR = 3	N/A	N/A
		2ND FLOOR = 36		2ND FLOOR = 1	2ND FLOOR = 2		
MAX. EXIT ACCESS TRAVEL DISTANCE REQUIRED	EXIT ACCESS TRAVEL DISTANCE PROVIDED	MAX. COMMON PATH OF EGRESS TRAVEL REQUIRED	COMMON PATH OF EGRESS TRAVEL PROVIDED	EGRESS WIDTH REQUIRED OTHER COMPONENTS = .15" (IN INCHES)	EGRESS WIDTH PROVIDED OTHER COMPONENTS (IN INCHES)		
200'-0"	1ST FLOOR = 50'-0"	75'-0"	1ST FLOOR = 28'-6"	1ST FLOOR = 5.4" (.15"x36)	1ST FLOOR = 136" (4 DR. @ 36" EA.)		
	2ND FLOOR = 94'-8"		2ND FLOOR = 28'-5"	2ND FLOOR = 5.4" (.15"x36)	2ND FLOOR = 68" (2 DR. @ 36" EA.)		
<u>EGRESS DOOR NOTES:</u>							
1. ALL DOORS SHALL SWING IN THE DIRECTION OF EGRESS TRAVEL WHERE SERVING AN OCCUPANT LOAD OF 50 OR MORE PERSONS OR A GROUP H OCCUPANCY.							
2. ALL DOORS REQUIRED TO BE ACCESSIBLE TO HAVE A CLEAR OPENING WIDTH OF 32" WITH THE DOOR OPENED 90 DEGREES, MEASURED BETWEEN THE FACE OF THE DOOR & THE OPPOSITE STOP.							
3. MULTIPLE MEANS OF EGRESS SHALL BE SIZED SUCH THAT THE LOSS OF ANY ONE MEANS OF EGRESS SHALL NOT REDUCE THE AVAILABLE CAPACITY TO LESS THAN 50% OF THE REQUIRED CAPACITY.							
4. MAINTAIN A MINIMUM OF 12" CLEAR SPACE ON THE PUSH SIDE & 18" CLEAR SPACE ON THE PULL SIDE OF DOORS PER 2017 FLORIDA ACCESSIBILITY CODE.							
5. ALL THRESHOLDS AT DOORS NOT TO EXCEED 1/2". RAISED THRESHOLDS & FLOOR LEVEL CHANGES AT ACCESSIBLE DOORWAYS SHALL BE BEVELED w/ SLOPE NO GREATER THAN 1:2.							
6. WHERE A BUILDING IS EQUIPPED THROUGHOUT WITH AN AUTOMATIC SPRINKLER SYSTEM IN ACCORDANCE WITH SECTION 903.3.1.1 OR 903.3.1.2, THE SEPARATION DISTANCE OF THE EXIT DOORS OR EXIT ACCESS DOORWAYS SHALL NOT BE LESS THAN 1/3 OF THE LENGTH OF THE MAXIMUM OVERALL DIAGONAL DIMENSION OF THE AREA SERVED. FBC2017, SECTION 1007.1.1, EXCEPTION #2.							

LIFE SAFETY PLAN LEGEND		FIRE EXTINGUISHERS	
##	NUMBER OF OCCUPANTS EXITING THROUGH DOOR OPENING (IN INCHES)	A	BUSINESS AREA CLASS A - ORDINARY (MODERATE) HAZARD MIN. 2-A RATED SINGLE EXTINGUISHER MAX. 1,500 SF AREA PER UNIT OF A, MAX. 11,250 S.F. OF FLOOR FLOOR AREA PER FIRE EXTINGUISHER MAX. 75'-0" TRAVEL DISTANCE TO FIRE EXTINGUISHER MIN. OF TWO (2), 2-A RATED FIRE EXTINGUISHER REQUIRED FOR 3,790 S.F. VERIFY EXISTING EXTINGUISHER IS IN GOOD WORKING ORDER & HAS CURRENT INSPECTION TAGS. IF NOT, PROVIDE NEW: LARSEN 2409-5R OR APPROVED EQUAL MULTIPURPOSE DRY CHEMICAL TYPE : MP5, 5 LBS, UL 2A-10B-C, ON STANDARD WALL HUNG BRACKET FIRE EXTINGUISHER SHOULD BE MOUNTED MINIMUM 4 INCHES AND MAXIMUM 27" FROM FLOOR, IF FIRE EXTINGUISHER IS LESS THAN 40 LBS. IN WEIGHT.
	EXIT CAPACITY OF DOOR OPENING (IN INCHES)		
---	DIRECTION OF EGRESS TRAVEL		
→	POINT OF EXIT DISCHARGE		
○	STARTING POINT OF EXIT ACCESS/ COMMON PATH OF EGRESS TRAVEL DISTANCE		
T.D.---	75'-0" MAX. TRAVEL DISTANCE TO REACH AN EXIT		
FL	FIRE ALARM HORN & FLASHING STROBE LIGHT COMBINATION		
⊙	FIRE ALARM PULL STATION		
↕	EXIT SIGN w/ EMERGENCY LIGHT & BATTERY BACK-UP		
↕↕	EXIT SIGN (DUAL SIDED) w/ EMERGENCY LIGHT & BATTERY BACK-UP		
EXIT SIGNS TO BE LED EXIT/EMERGENCY COMBO, WALL/CEILING MOUNT w/ 90 MIN BATTERY BACK-UP. ALL SIGNS TO BE PLACED NO LESS THAN 80" AFF TO BOTTOM OF FIXTURE (w/ DIRECTIONAL ARROWS IF SHOWN ON PLAN) RAISED CHARACTER & BRAILLE EXIT SIGNS: A SIGN STATING 'EXIT' IN RAISED CHARACTERS AND BRAILLE COMPLYING WITH ICC A117.1 SHALL BE PROVIDED ADJACENT TO EACH DOOR TO AN AREA OF REFUGE, AN EXTERIOR AREA FOR ASSISTED RESCUE, AN EXIT STAIRWAY, AN EXIT RAMP, AN EXIT PASSAGEWAY, AND THE EXIT DISCHARGE. EXIT SIGN MUST BE INSTALLED ON THE WALL ADJACENT TO THE LATCH SIDE OF THE DOOR @ 60" A.F.F. TO THE CENTERLINE OF THE SIGN. BRAILLE LETTERING ALSO USED FOR VISION IMPAIRED PERSONS.			
↕↕	MINI LED ADJUSTABLE TWO-HEAD EMERGENCY/EGRESS LIGHT w/ 90 MIN BATTERY BACK-UP		

EXIT REQUIREMENTS (SOUTH BUILDING)							
SPACE	OCCUPANCY CLASS	OCCUPANT LOAD	SPRINKLERED	MIN. # OF EXITS REQUIRED (SEE NOTES ON SHEET LS1)	# OF EXITS PROVIDED	MIN. SEPARATION OF EXITS REQUIRED	SEPARATION OF EXITS PROVIDED
BUSINESS	B	1ST FLOOR = 36	NO	1ST FLOOR = 1	1ST FLOOR = 3	N/A	N/A
		2ND FLOOR = 36		2ND FLOOR = 1	2ND FLOOR = 2		
MAX. EXIT ACCESS TRAVEL DISTANCE REQUIRED	EXIT ACCESS TRAVEL DISTANCE PROVIDED	MAX. COMMON PATH OF EGRESS TRAVEL REQUIRED	COMMON PATH OF EGRESS TRAVEL PROVIDED	EGRESS WIDTH REQUIRED OTHER COMPONENTS = .15" (IN INCHES)	EGRESS WIDTH PROVIDED OTHER COMPONENTS (IN INCHES)		
200'-0"	1ST FLOOR = 50'-0"	75'-0"	1ST FLOOR = 28'-6"	1ST FLOOR = 5.4" (.15"x36)	1ST FLOOR = 136" (4 DR. @ 36" EA.)		
	2ND FLOOR = 117'-6"		2ND FLOOR = 22'-4"	2ND FLOOR = 5.4" (.15"x36)	2ND FLOOR = 68" (2 DR. @ 36" EA.)		
<u>EGRESS DOOR NOTES:</u>							
1. ALL DOORS SHALL SWING IN THE DIRECTION OF EGRESS TRAVEL WHERE SERVING AN OCCUPANT LOAD OF 50 OR MORE PERSONS OR A GROUP H OCCUPANCY.							
2. ALL DOORS REQUIRED TO BE ACCESSIBLE TO HAVE A CLEAR OPENING WIDTH OF 32" WITH THE DOOR OPENED 90 DEGREES, MEASURED BETWEEN THE FACE OF THE DOOR & THE OPPOSITE STOP.							
3. MULTIPLE MEANS OF EGRESS SHALL BE SIZED SUCH THAT THE LOSS OF ANY ONE MEANS OF EGRESS SHALL NOT REDUCE THE AVAILABLE CAPACITY TO LESS THAN 50% OF THE REQUIRED CAPACITY.							
4. MAINTAIN A MINIMUM OF 12" CLEAR SPACE ON THE PUSH SIDE & 18" CLEAR SPACE ON THE PULL SIDE OF DOORS PER 2017 FLORIDA ACCESSIBILITY CODE.							
5. ALL THRESHOLDS AT DOORS NOT TO EXCEED 1/2". RAISED THRESHOLDS & FLOOR LEVEL CHANGES AT ACCESSIBLE DOORWAYS SHALL BE BEVELED W/ SLOPE NO GREATER THAN 1:2.							
6. WHERE A BUILDING IS EQUIPPED THROUGHOUT WITH AN AUTOMATIC SPRINKLER SYSTEM IN ACCORDANCE WITH SECTION 903.3.1.1 OR 903.3.1.2, THE SEPARATION DISTANCE OF THE EXIT DOORS OR EXIT ACCESS DOORWAYS SHALL NOT BE LESS THAN 1/3 OF THE LENGTH OF THE MAXIMUM OVERALL DIAGONAL DIMENSION OF THE AREA SERVED. FBC2017, SECTION 1007.1.1, EXCEPTION #2.							



LIFE SAFETY PLAN LEGEND	
##	NUMBER OF OCCUPANTS EXITING THROUGH DOOR OPENING (IN INCHES)
---	DIRECTION OF EGRESS TRAVEL
→	POINT OF EXIT DISCHARGE
○	STARTING POINT OF EXIT ACCESS/ COMMON PATH OF EGRESS TRAVEL DISTANCE
T.D.---	75'-0" MAX. TRAVEL DISTANCE TO REACH AN EXIT
FL	FIRE ALARM HORN & FLASHING STROBE LIGHT COMBINATION
⊙	FIRE ALARM PULL STATION
↕	EXIT SIGN w/ EMERGENCY LIGHT & BATTERY BACK-UP
↕↕	EXIT SIGN (DUAL SIDED) w/ EMERGENCY LIGHT & BATTERY BACK-UP
EXIT SIGNS TO BE LED EXIT/EMERGENCY COMBO, WALL/CEILING MOUNT w/ 90 MIN BATTERY BACK-UP. ALL SIGNS TO BE PLACED NO LESS THAN 80" AFF TO BOTTOM OF FIXTURE (w/ DIRECTIONAL ARROWS IF SHOWN ON PLAN) RAISED CHARACTER & BRAILLE EXIT SIGNS: A SIGN STATING 'EXIT' IN RAISED CHARACTERS AND BRAILLE COMPLYING WITH ICC A117.1 SHALL BE PROVIDED ADJACENT TO EACH DOOR TO AN AREA OF REFUGE, AN EXTERIOR AREA FOR ASSISTED RESCUE, AN EXIT STAIRWAY, AN EXIT RAMP, AN EXIT PASSAGEWAY, AND THE EXIT DISCHARGE. EXIT SIGN MUST BE INSTALLED ON THE WALL ADJACENT TO THE LATCH SIDE OF THE DOOR @ 60" A.F.F. TO THE CENTERLINE OF THE SIGN. BRAILLE LETTERING ALSO USED FOR VISION IMPAIRED PERSONS.	
↕↕	MINI LED ADJUSTABLE TWO-HEAD EMERGENCY/EGRESS LIGHT w/ 90 MIN BATTERY BACK-UP
FIRE EXTINGUISHERS	
BUSINESS AREA CLASS A - ORDINARY (MODERATE) HAZARD MIN. 2-A RATED SINGLE EXTINGUISHER MAX. 1,500 SF AREA PER UNIT OF A, MAX. 11,250 S.F. OF FLOOR FLOOR AREA PER FIRE EXTINGUISHER MAX. 75'-0" TRAVEL DISTANCE TO FIRE EXTINGUISHER MIN. OF TWO (2), 2-A RATED FIRE EXTINGUISHER REQUIRED FOR 3,790 S.F. VERIFY EXISTING EXTINGUISHER IS IN GOOD WORKING ORDER & HAS CURRENT INSPECTION TAGS. IF NOT, PROVIDE NEW: LARSEN 2409-5R OR APPROVED EQUAL MULTIPURPOSE DRY CHEMICAL TYPE : MP5, 5 LBS, UL 2A-10B-C, ON STANDARD WALL HUNG BRACKET FIRE EXTINGUISHER SHOULD BE MOUNTED MINIMUM 4 INCHES AND MAXIMUM 27" FROM FLOOR, IF FIRE EXTINGUISHER IS LESS THAN 40 LBS. IN WEIGHT.	

SOUTH BUILDING
OPEN SPACE
FUTURE TENANT WILL SUBMIT LAYOUT FOR APPROVAL

GROUP 'B'

TOTAL OCCUPANT LOAD = 72 OCCUPANTS

2ND FLOOR
LIFE SAFETY PLAN
SCALE 3/16" = 1'-0"



PERMIT SET 02-25-20

REVISIONS		BY
START		JL 7-03-19
SPRINK REVISION		JL 8-19-20

HATCHER OFFICE BUILDING
LOT 20 & 26 NW 6TH AVE,

NORM PAUL ARCHITECT
12119 SALINAS WAY
DELRAY BEACH FL 33446
EMAIL: NORMPAUL@GMAIL.COM

AR92781



CLAY CUBE INC.
751 PARK OF COMMERCE DRIVE
SUITE #128 BOCA RATON FL 33487
TEL: (561) 271-5441
EMAIL: CLAYCUBE@LVN.COM
DRAWN: JL
DATE: 02/11/20
SCALE: 1/4" = 1'-0"

SHEET
LS2
OF 7