


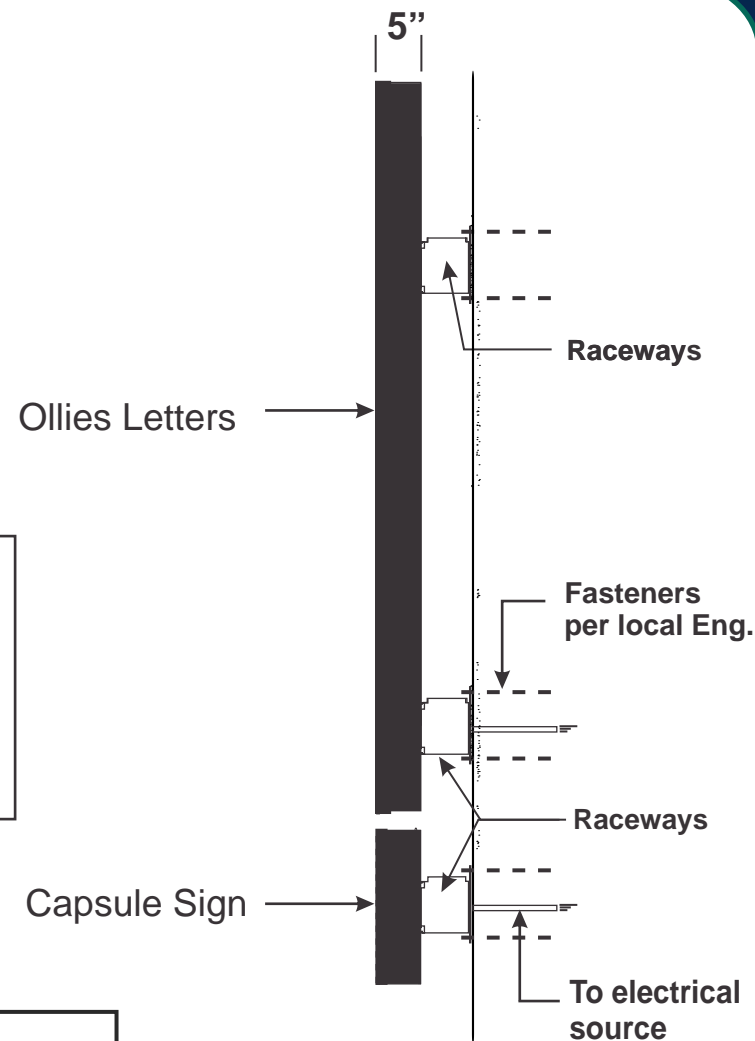


Proposed Raceway Mounted Illuminated Letters & Sign
Scale: 3/16" = 1'-0" 242.84 Sq. Feet

Sign components will be raceway mounted...
 raceway color to match building color.

Color Notes:	
Ollie's Letter Faces	Ollie's lettering outline & Capsule background.
C1  Translucent Acrylic #2793 Red. Red LED illuminated	C3  3M / Gerber Opaque Vinyl #220-22
Capsule Face	
C2  Translucent Acrylic #7328 White. White LED illuminated	
Channel Letter returns & Capsule returns are Black pre-coated Aluminum. Retainers for letters & capsule sign are Black.	



End View with Proposed Sign



Signs meet current NEC. code.

NOTE:
 Note: time of illumination will be controlled by time clock, provided by others.
 UL. Listed exterior disconnect switches required, or UL. & NEC. approved disconnect switches required.
 Fastener type & Qty. for components per... Wall conditions & local engineering.
 *Electrical to meet UL & NEC. Requirements and shall carry the UL. label.
 Note: IF ELECTRICAL CIRCUIT IS NOT WITHIN 6'-0" OF CENTER OF SIGN AREA, POWER HOOKUP WILL BE BY OTHERS.

General Notes:

Channel Letters:
 Faces are 3/16" flat Acrylic.
 Letter backs are 3mm Solid Core ACM material
 Returns are .063" Aluminum.
 Ollies retainers are to be 2"x 2" aluminum fabricated angle type, color black.
 Illumination provided by internal Red LEDs.
 Letters are raceway mounted.

General Notes:

Capsule Sign:
 Face is .150" flat Poly-carbonate.
 Capsule back is 3mm Solid Core ACM material
 Returns are .040" Aluminum.
 Fabricated 1 1/4" x 1 1/4" retainer
 Illumination provided by internal White LEDs.
 Raceway mounted.

Client:

OLLIE'S
 GOOD STUFF CHEAP

Location:

14540 S. Military Trail
 Delray Beach FL.

Project:

Proposed Wall Sign

Notes:

Dwg. Date:
 11-4-20

Scale:
 As Noted

Revisions: Date:

Presented By:

TSR
 The Sign Resource, Inc.
 P.O. Box 6215 Hickory, NC. 28603
 Ph. 727-669-6877 www.TSRFL.com

Note: This drawing is property of The Sign Resource, & shall not be reproduced without written permission

Dwg. Number: OBO- Sign 1

Client:

OLLIE'S
GOOD STUFF CHEAP

Location:

14540 S. Military Trail
Delray Beach FL.

Project:

Proposed Wall Sign

Notes:

Dwg. Date:
11-4-20

Scale:
As Noted

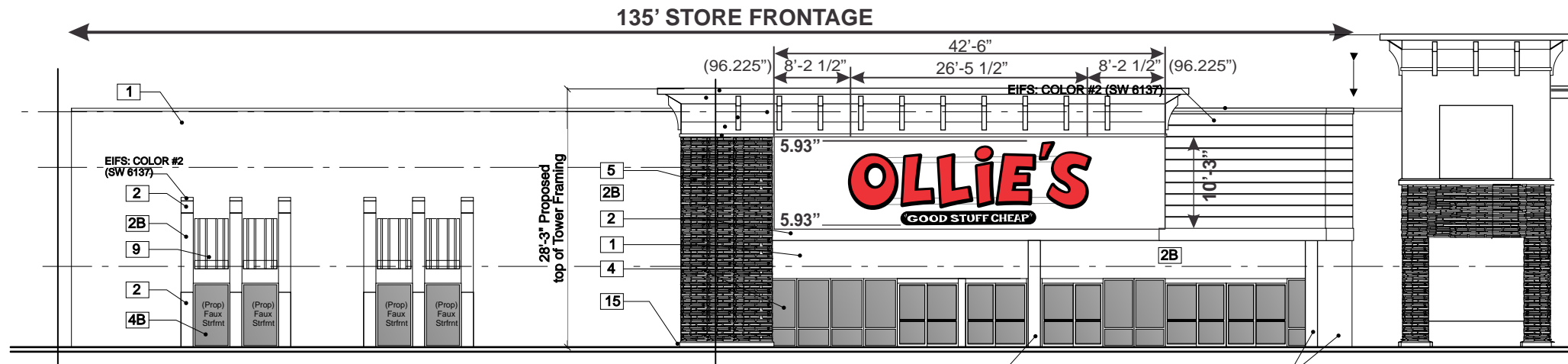
Revisions: Date:

Presented By:

TSR
The Sign Resource, Inc.
P.O. Box 6215 Hickory, NC. 28603
Ph. 727-669-6877 www.TSRFL.com

Note: This drawing is property of
The Sign Resource, & shall not be
reproduced without written permission

Dwg. Number: OBO- Elev 1



EXISTING ELEVATION WITH PROPOSED SIGN
(South Facade - Building #1)
SCALE 1/16" = 1'-0"



STOREFRONT VIW WITH PROPOSED SIGN