

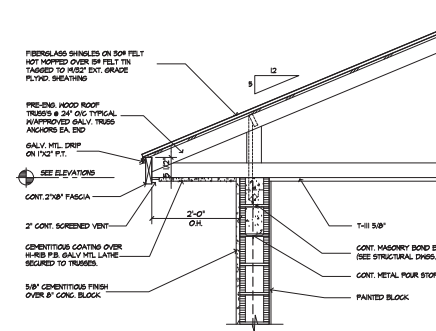
SCALE: 1/4" = 1'-0"

SCALE: 1/4" = 1'-0"

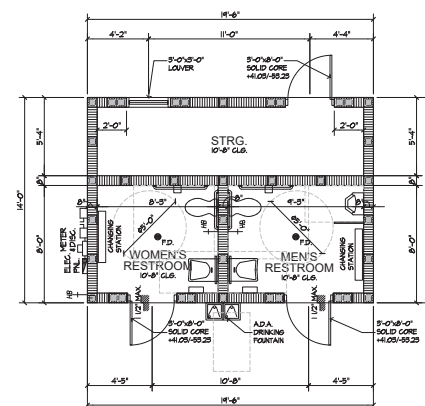
SCALE: 1/4" = 1'-0"

SCALE: 1/4" = 1'-0"

AREA CALCULATIONS	
NON CONDITIONED AREAS	
RESTROOMS	169 SF
STORAGE	104 SF
	273 SF
TOTAL	
GROSS AREA	273 SF



SCALE: 3/4" = 1'-0"



revisions	
no.	date

designed SED
drawn TJC
checked SED
date 12/10/20 PERMIT
scale 1/4" = 1'-0" (N.O.)
job no. 200824.rvc



12:57:18 -05'00'
Scott Blakeslee Disher
AR-0011988 AA-0003285

ATLANTIC GROVE II CABANA BUILDING

project

ARCHITECTURAL
Studio, Inc.

Architecture
■
Planning

300 Avenue of Champions
Suite 260
Palm Beach Gardens, Florida 33418
Phone 561.202.6990
Fax 561.296.2494
archstudiofl.com

drawing

FLOOR PLAN,
ELEVATIONS, &
WALL SECTION
sheet

A-1

	<p>1 x P.T. WOOD BUCK - MIN. WIDTH TO MATCH WIND FRAME - SET IN URETHANE SEALANT BED.</p> <p>FURRING</p> <p>1 x P. T. NAILER</p> <p>1/2" GYPSUM HALBOARD WITH CORNER TRIM</p> <p>SEALANT</p> <p>CONCRETE LINTEL OR MASONRY JAMB</p> <p>FASTENERS SIZED AND SPACED PER PRODUCT APPROVAL</p> <p>WATERPROOFING COATING APPLIED AROUND CMU OPENINGS 6" ON FACE OF CMU WALL</p> <p>CEMENTITIOUS FINISH - REFER TO ELEVATIONS FOR HEAD AND JAMB TRIM VARIATIONS</p> <p>SEAL P.T. WOOD BUCK AT JOINT WITH FILLER</p> <p>PVC CORNER BEAD</p> <p>DRAIN SLOPE @ HEAD</p> <p>SEALANT</p> <p>WATERPROOF MEMBRANE COATING APPLIED TO TOP AND EXTERIOR FACE OF BUCKS</p> <p>CONTINUOUS URETHANE SEALANT BEAD BETWEEN FLANGE AND BUCK</p> <p>WINDOK INSTALL PER PRODUCT APPROVALS</p> <p>NOTE: REFER TO 'CMU OPENING WATERPROOFING' DETAIL FOR ADDITIONAL WATERPROOFING</p>	<p>RETURN UNDER HEADER</p> <p>RETURN ANY CEMENTITIOUS TRIM COLOR AND TEXTURE TO INSIDE CORNERS OF WINDOK, DOOR, AND OTHER EXTERIOR OPENINGS AS NEEDED</p>
	LOUVER/WINDOW HEAD/JAMB-CMU	CEMENTITIOUS TRIM COLOR + TEXTURE
<p>NO SILL FASTENERS - VERIFY WITH PRODUCT APPROVAL</p> <p>SEALANT</p> <p>STOOL PER SPEC</p> <p>1 x P. T. NAILER</p> <p>1/2" GYPSUM HALBOARD</p> <p>FURRING</p> <p>WINDOK - INSTALL PER PRODUCT APPROVAL</p> <p>CONTINUOUS URETHANE SEALANT BEAD BETWEEN FLANGE BUCK</p> <p>SEALANT</p> <p>SEAL WINDOK TO BUCK</p> <p>SLOPE</p> <p>STEPPED POURED CONCRETE SILL</p> <p>WATERPROOFING COATING, APPLY ON SILL EXTEND 6" DOWN THE WALL</p> <p>CEMENTITIOUS FINISH SEE ELEVATIONS FOR SILL TRIM VARIATIONS</p> <p>NOTE: REFER TO 'CMU OPENING WATERPROOFING' DETAIL FOR ADDITIONAL WATERPROOFING</p>	<p>FURRING</p> <p>1 x P. T. NAILER</p> <p>GYP. BD.</p> <p>WOOD CASING</p> <p>SEALANT</p> <p>2 x 8 P.T. WOOD BUCK SET IN URETHANE SEALANT</p> <p>CONCRETE LINTEL OR MASONRY JAMB</p> <p>FASTENERS SIZED AND SPACED PER PRODUCT APPROVAL</p> <p>CEMENTITIOUS FINISH - REFER TO ELEVATIONS FOR HEAD AND JAMB TRIM VARIATIONS</p> <p>WATERPROOFING COATING EXTEND ALL AROUND AND CONTINUING 6" AT FACE OF CMU WALL</p> <p>PVC CORNER BEAD</p> <p>DRAIN SLOPE @ HEAD</p> <p>CEMENTITIOUS FINISH ON GALV. METAL LATH</p> <p>WATERPROOFING MEMBRANE COATING TO EXTEND ON TOP AND EXTERIOR FACE OF BUCKS</p> <p>SEALANT</p> <p>WOOD OR FIBERGLASS DOOR AND FRAME - ATTACH PER PRODUCT APPROVAL</p>	<p>FURRING</p> <p>1 x P. T. NAILER</p> <p>GYP. BD.</p> <p>WOOD CASING</p> <p>2 x 8 P.T. WOOD BUCK SET IN URETHANE SEALANT</p> <p>CONCRETE LINTEL OR MASONRY JAMB</p> <p>FASTENERS SIZED AND SPACED PER PRODUCT APPROVAL</p> <p>CEMENTITIOUS FINISH - REFER TO ELEVATIONS FOR HEAD AND JAMB TRIM VARIATIONS</p> <p>WATERPROOFING COATING EXTEND ALL AROUND AND CONTINUING 6" AT FACE OF CMU WALL</p> <p>PVC CORNER BEAD</p> <p>DRAIN SLOPE @ HEAD</p> <p>CEMENTITIOUS FINISH ON GALV. METAL LATH</p> <p>WATERPROOFING MEMBRANE COATING TO EXTEND ON TOP AND EXTERIOR FACE OF BUCKS</p> <p>SEALANT</p> <p>WOOD OR FIBERGLASS DOOR AND FRAME - ATTACH PER PRODUCT APPROVAL</p>
LOUVER/WINDOW SILL-CMU	OUT SWING ENTRY DOOR HEAD/JAMB-CMU	IN SWING ENTRY DOOR HEAD/JAMB-CMU
<p>EXTERIOR CMU WALL</p> <p>WATERPROOFING COATING ON WINDOK SILL, JAMB AND HEAD</p> <p>1. SET P.T. WOOD BUCK OVER CMU WATERPROOFING IN URETHANE SEALANT, FASTEN PER PRODUCT APPROVALS</p> <p>2. APPLY LIQUID WATERPROOFING MEMBRANE OVER THE TOP AND EXTERIOR FACE OF BUCK AND SILL.</p> <p>3. SEAL SIDES OF P.T. WOOD BUCK TO MASONRY</p> <p>NUMBERS REPRESENT INSTALLATION SEQUENCE</p> <p>INSTALL WINDOK OR DOOR FRAME PER PRODUCT APPROVAL AND SEAL WINDOK OR DOOR FRAME TO P.T. WOOD BUCK AND MASONRY</p>	<p>SET THRESHOLD URETHANE SEALANT & SLAB WATERPROOFING COATING</p> <p>SEALANT</p> <p>APPLY CAULKING TO FLOOR</p> <p>FLOOR FIN</p> <p>1-1/2"</p> <p>SLOPE</p> <p>CEMENTITIOUS FINISH</p> <p>FIN FLOOR</p> <p>CONC. SLAB</p> <p>FASTENERS SIZED AND SPACED PER PRODUCT APPROVAL</p> <p>WOOD OR FIBERGLASS DOOR AND FRAME - ATTACH PER PRODUCT APPROVAL</p>	<p>SET THRESHOLD URETHANE SEALANT</p> <p>SEALANT</p> <p>FLOOR FIN</p> <p>1-1/2"</p> <p>SLOPE TO DRAIN</p> <p>CEMENTITIOUS FINISH</p> <p>FIN FLOOR</p> <p>CONC. SLAB</p> <p>FASTENERS SIZED AND SPACED PER PRODUCT APPROVAL</p> <p>WOOD OR FIBERGLASS DOOR AND FRAME - ATTACH PER PRODUCT APPROVAL</p>
CMU OPNG WATERPROOFING-ISO	OUT SWING DOOR SILL	IN SWING DOOR SILL

revisions
no. date

designed
drawn
checked
date
scale
job no.

Digitally signed by
Scott B Disher
DN: c=US,
o=Unaffiliated,
ou=A01410C00000
1748C0A11FD0000
E646C cm=Scott B
Disher
Date: 2020.12.10
12:57:34 -0500
Scott Blakeslee Disher
AB-0011588 AB-0033885

ATLANTIC GROVE II CABANA BUILDING

project

DELRAY BEACH
PALM BEACH COUNTY, FLORIDA
by: NEW URBAN COMMUNITIES

ARCHITECTURAL
Studio, Inc.

Architecture
+ Planning

300 Avenue of Champions
Suite 260
Palm Beach Gardens, Florida 33418
Phone 561.262.8990
Fax 561.296.2894
archstudio.com

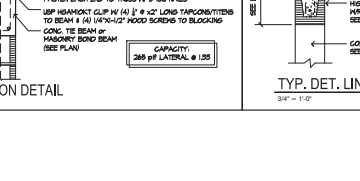
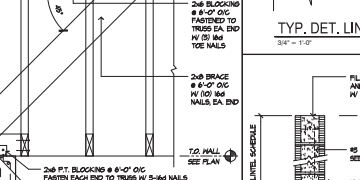
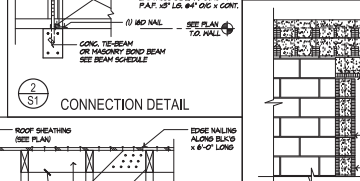
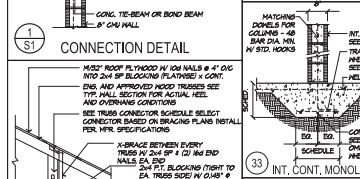
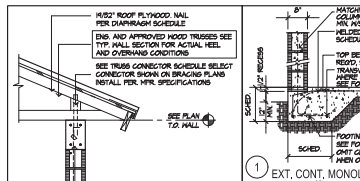
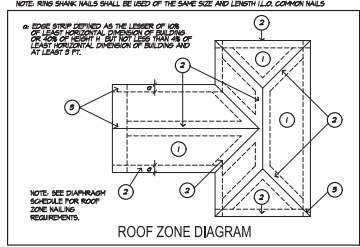
drawing
DETAILS

sheet

A-2

TRUSS CONNECTOR SCHEDULE									
MARK	TRUSS	FASTENERS PER TRUSS	ALLOWABLE UPLIFT	PARALLEL LOAD (P)	PERPENDICULAR LOAD (V)	PRODUCT	APPROVAL		
TC-1	HTA 2000R	1/4" DIA 1/2" X 12"	8750 #	2450 #	110 #	270 #	125 #	FL 17800	
TC-2	HTA 2000R	1/4" DIA 1/2" X 12"	8750 #	2450 #	110 #	270 #	125 #	FL 17800	
TC-3	RTBM	1/4" DIA 1/2" X 12"	8750 #	2450 #	110 #	270 #	125 #	FL 17800	
TC-4	HTA 2000R	1/4" DIA 1/2" X 12"	8750 #	2450 #	110 #	270 #	125 #	FL 17800	


DIAPHRAGM SCHEDULE									
LOCATION	PANEL GRADE	PANEL THICKNESS	FRAMING SPACING	DIAPHRAGM BOUNDARY	ZONE 1	ZONE 2	ZONE 3	REMARKS	
ROOF	APA RATED SHEATHING EXPOSURE 1 OR EQUAL	5/8" MIN	24" O.C.	1/2" MIN	1/2" MIN	1/2" MIN	1/2" MIN	BLOCKED AS SHOWN ON PLAN	
EXT. WALL	APA RATED SHEATHING EXPOSURE 1 OR EQUAL	5/8" MIN	24" O.C.	1/2" MIN	1/2" MIN	1/2" MIN	1/2" MIN	NAIL CORNER STUDS AT 4" O.C. MAX. TYPICAL. BLOCK FREE EDGES	



SAFE GRAVITY LOADS FOR 8\"/>

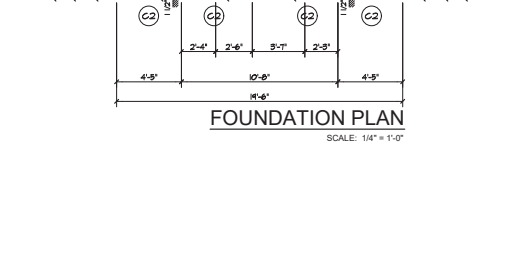
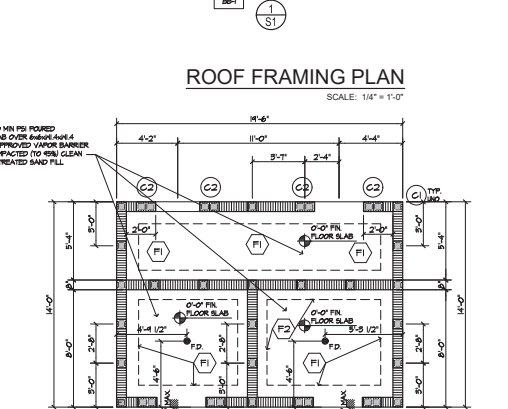
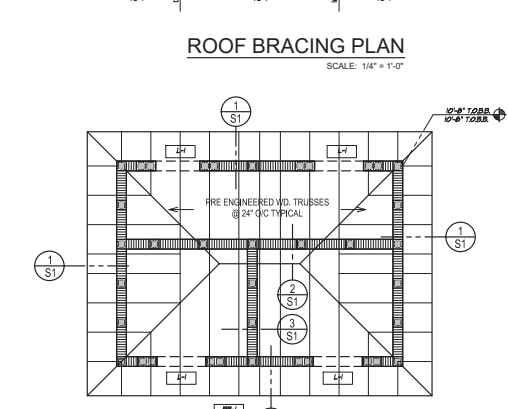
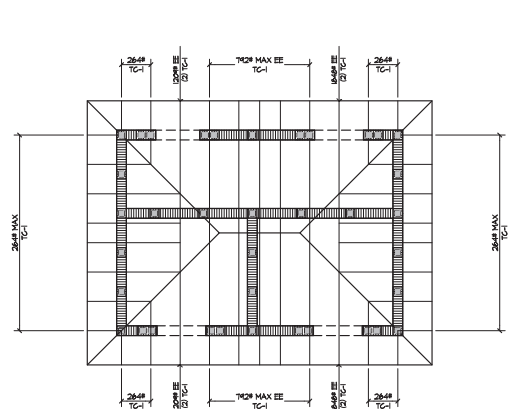
SAFE LATERAL LOADS FOR 8\"/>

SAFE UPLIFT LOADS FOR 8\"/>

P-18 FILLER CELLS W/ 18" VERT. (TYP.)		FOOTING SCHEDULE				
LATEL ON COLUMN		MARK	SIZE (INCH)	REINFORCING	DESCRIPTION	DET. NO.
		F-1	18"X18"XCONT.	N#3 9G CONT. - 1 TOP & 2 BTM. W/ 60% LAPS OF NEW#1	EXTERIOR HORIZONTAL ONE STORY	
		F-2	18"X18"XCONT.	N#3 9G CONT.	INTERIOR HORIZONTAL ONE STORY	3
L. COLUMNS LATEL SOLD VERTICALLY		COLUMN SCHEDULE				
T.O.B.B. 		MARK	SIZE TYPE	DESCRIPTION		
VERT. TIES G-1 AS REQ'D LATEL, HORIZ.		G-1	#4 BLOCK	CONC. BLK. W/ FULLY GRAVITD CELL. W/ 18" VERT. EA. CELL 8" Ø OF G. MAX. OR AS LOCATED ON PLAN		
		G-2	#4 BLOCK	CONC. BLOCK W/ FULLY GRAVITD CELLS W/ 18" VERT. EA. CELL		

L-4 AND BEYOND FOUNDATION PLAN		TIE-BEAM SCHEDULE									
MARK	SIZE	REINFORCING				# OF HOOPS OR STIRRUPS	REMARKS				
		TOP	WED	BOTM							
BB-1	8x8	MS	-	-	NONE REQD.	TYPICAL MAJORITY BOND BEAM COL.					
L-1	50	MS	-	-	NONE REQD.	MINORITY OVERSIDE ALL CORNERS FILLED					
						CORNERCOTE HIGH STRENGTH LINTEL (2) CORNERS FILLED					

TIE-BEAM SCHEDULE									
MARK	SIZE	TYPE	DESCRIPTION	REINFORCING	REMARKS				
TB-1	8"								



revisions
no. _____ date _____

designed by: **SD**
drawn by: **TJS**
checked by: **SD**
date: **12/10/20 PERMIT**
scale: **1/4\"/>**

job no. **20082-1nc**

Digitally signed by Scott B Disher
DN: c=US,
o=Unaffiliated,
ou=A01410C000
00174BC0A11FD
000084FC,
cn=Scott B Disher
Date: 2020.12.10
12:47:53 -05'00'
#0-0011550 #A-003355

ATLANTIC GROVE II CABANA BUILDING

project

DELAIR BEACH
PALM BEACH COUNTY, FLORIDA
by: NEW URBAN COMMUNITIES

ARCHITECTURAL
Studio, Inc.

Architecture
Planning

300 Avenue of Champions
Suite 300
Palm Beach Gardens, Florida 33418
Phone 561.262.8990
Fax 561.262.8994
archstudio.com

drawing
FOUNDATION /
ROOF FRAMING
& BRACING
PLAN
sheet

S-1



PLUMBING LEGEND			
L	LAVATORY	F.U.	FUTURE UNITS
LG	LAVATORY CLOSURE	R.V.D.	RELIEF VALVE DISCHARGE
SK	SINK	G.D.	CONDENSATE DRAIN
WH	WATER HEATER	— — — — —	SOL. OR MASTE LINE
GO	CLEANOUT	— — — — —	VENT LINE
V	VENT	— — — — —	INDIRECT DRAIN
VTR	VENT-TRAP-RETURN	— — — — —	COLD WATER LINE
H	WASTE	— — — — —	HOT WATER LINE
CK	COLD WATER	— — — — —	CONDENSATE DRAIN
F.G.	FLUSH CLEANOUT	R.V.D.	RELIEF VALVE DISCHARGE LINE
H.B.	HOSE BIB HIBRAC PLUMBING PREVENTER & SHUT-OFF VALVE	— — — — —	HOSE BIB HIBRAC PLUMBING PREVENTER AND SHUT-OFF VALVE
DIS	DISPOSHER	— — — — —	GATE VALVE

- A. HEAT STRIP LOAD GOVERNS OVER CONDENSOR UNIT LOAD.
- B. GENERAL LIGHTING CALCULATED @ 444 (50.0FT.) X 3
(WATTS/50.0FT.) = 1402 / 8 (GENLTG.CIR) = 180.2 (WATTS/EA)
- C. CONDUIT SIZE.
- D. SEE SUB-PANEL CALCULATIONS.
- R. BRANCH CIRCUITS RUN IN RDMX.

$(2 \times 40 \times 26) / (4 \times 15000 \times 240) = 1.75$
 $1 + 1.75 = 36.36 \times 26 / 4 = 4525.09$
 A.L.C. OF SERVICE = 4525.09 A.L.C.
 RATING OF PANEL = 10,000

