



The Ray Hotel
Overall West Elevation (N.E. 2nd Ave, Southern End)



Shops at The Ray
Overall West Elevation (N.E. 2nd Ave, Northern End)

M E N I N
Shops
at The Ray

253-279 NE 2nd Avenue
Delray Beach, FL 33444



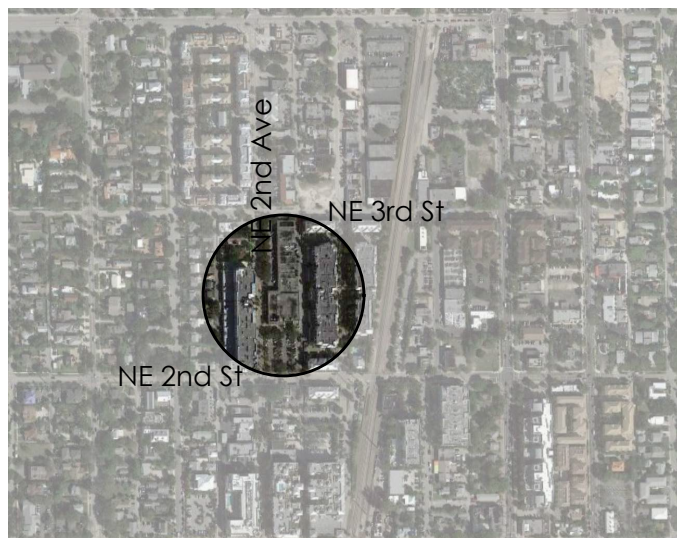
233 NE 2nd Avenue
Delray Beach, FL 33444

Master Sign Application
Resubmittal (03/30/2021)



14 NE 1st Ave, Ste 507
Miami, FL 33132
(305) 455 4216

Drawing:	Cover:
	Master Sign Application
Project:	The Ray Hotel and Shops at The Ray
Project No:	16015.2
Drawn By:	AN, SZ
Issue Date:	03/08/2021
Revision Date:	
Scale:	
Sheet No.:	

[illegible]

M E N I N
Shops
at The Ray
253-279 NE 2nd Avenue
Delray Beach, FL 33444



233 NE 2nd Avenue
Delray Beach, FL 33444

Master Sign Application
Resubmittal (03/30/2021)



14 NE 1st Ave. Ste 507
Miami, FL 33132
(305) 455 4216

Drawing:
Index and Vicinity Map

Project: The Ray Hotel and Shops at The Ray

Project No: 16015.2

Drawn By: AN, SZ

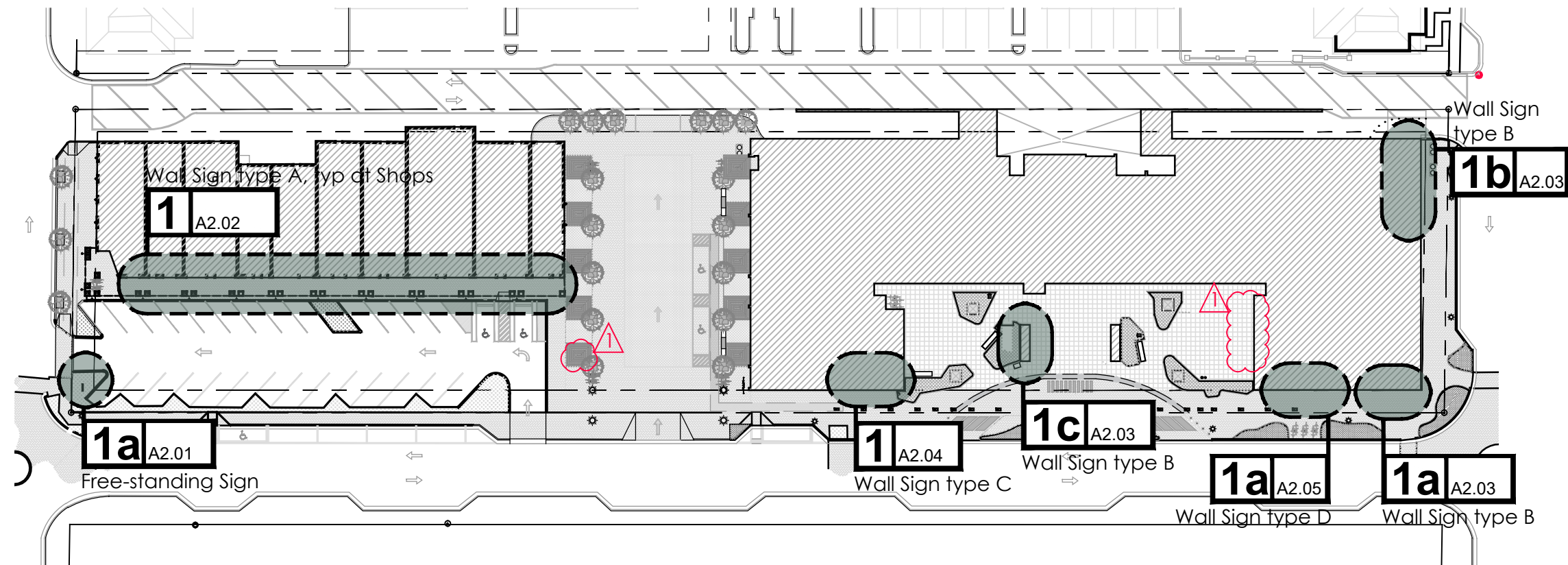
Issue Date: 03/08/2021

Revision Date:

Scale:

Sheet No.:

A1.00



Proposed Signage Legend

- Free-standing sign (4'-8" H x 2'-6" W)
"Shops at The Ray" Powder-coated Aluminum monument signage. Free-standing signage to be fastened to an underground concrete mounting base
- Wall Sign type A (varies)
Typical signage at Shops tenant spaces must be from a National registered trademark, or private business logo approved by Owner before installation. If not, signage must follow tenant's given standards shown in this application.
- Wall Sign type B (8'-0" H x 5'-3 1/2" W / 5'-4" H x 3'-6" W at South Facade)
"the RAY" LED Exterior grade custom face-lit powder-coated aluminum lettering with milky white acrylic face
- Wall Sign type C (2'-3" H x 6'-10 3/4" W)
"Akira Back" LED back-lit channel letters, powder-coated aluminum
- Wall Sign type D (2'-3" H x 6'-10" W)
"EMBER GRILL" LED back-lit channel letters, powder-coated aluminum to match pantone colors. Refer to color reference in sheet A2.05

1 Diagrammatic Site Plan - Signage Locations

Scale: N.T.S.

MENIN Shops at The Ray

253-279 NE 2nd Avenue
Delray Beach, FL 33444



233 NE 2nd Avenue
Delray Beach, FL 33444

Master Sign Application
Resubmittal (03/30/2021)



14 NE 1st Ave. Ste 507
Miami, FL 33132
(305) 455 4216

Drawing: Site Plan:
Signage Location Key Plan
Project: The Ray Hotel and
Shops at The Ray
Project No: 16015.2
Drawn By: AN, SZ
Issue Date: 03/08/2021
Revision Date:
Scale: As Noted
Sheet No.:

A1.01

Signing in Central Business District (CBD)						
Type of Sign		Quantity	Area (Max.)	Location	Height	Illumination
Free-stading	Monument	1	<div>Proposed: 4'-8" H x 2'-6" W / Area: 12 SqFt</div> <div>Monument Sign placed on Existing Landscape planter at Parking's Exit, 3'-6" off the Property Line</div>	At Shop's Parking's Exit (N.E. 3rd Street)	4'-8" <div>Sign to be fastened to an underground concrete mounting base</div>	Allowed (submitted separately with Class II Application)
Type A	Wall (individual tenant signs)	1 per tenant	<div>Proposed: Sign to have up to 2 lines of text, with a space of 4.25" in between. The area varies according to tenant sign/logo.</div> <div>Typical signage at Shops tenant spaces must be from a National registered trademark, or private business logo approved by Owner before installation. If not, signage must follow tenant's given standards shown in this application.</div>	Shop's West facade at tenant's arcade facade Up to 2 lines of text with 4.25" in between	1'-10 ¼" approx 10'-4" to F.F. when two lines of text 11'-5 ½" to F.F. when one line of text	Allowed
Type B	Wall (at West Elevation and Hotel's Entrance)	2	<div>Proposed: West Facade: 8'-0" H x 5'-3 ½" W (43 SqFt, 1.2% of facade area)</div> <div>Hotel's Entrance: 8'-0" H x 5'-3 ½" W (43 SqFt, 3.8% of facade area)</div>	West Facade (South end) Hotel's Entrance (Cube's North Elevation)	8'-0" West Facade: 33'-4" to F.F. Hotel's Entrance: centered in column wall	Allowed Proposed: Custom face-lit powder coated aluminum lettering with milky white acrylic face
	Wall (South Elevation)	1	<div>Proposed: South Facade: 5'-4" H x 3'-6" W (19 SqFt, 0.40% of facade area)</div>	South Facade (Upper right corner)	5'-4" 47'-9 ½" to F.F.	
Type C	Wall (at West Facade, North end)	1	<div>Proposed: 1.51% (16 Sq.Ft.), 2'-3"H x 6'-10 ¾" W.</div>	North end of West Facade, at Tenant's Storefront area	2'-3" 7'-3" to F.F.	Allowed Proposed: Signage to be open back-lit channel letters
Type D	Wall	1	<div>Proposed: West Facade: 0.6% (7 Sq.Ft.), 1'-6 ½"H x 4'-8" W.</div>	South end of West Facade and Civic Space facade, at Tenant's Storefront area	1'-6 ½" 11'-7" to F.F.	Allowed Proposed: Signage to be open back-lit channel letters
1 Signage Information						

M E N I N

Shops
at The Ray

253-279 NE 2nd Avenue
Delray Beach, FL 33444



233 NE 2nd Avenue
Delray Beach, FL 33444

Master Sign Application
Resubmittal (03/30/2021)



14 NE 1st Ave. Ste 507
Miami, FL 33132
(305) 455 4216

Drawing: Sign Information

Project: The Ray Hotel and Shops at The Ray

Project No: 16015.2

Drawn By: AN, SZ

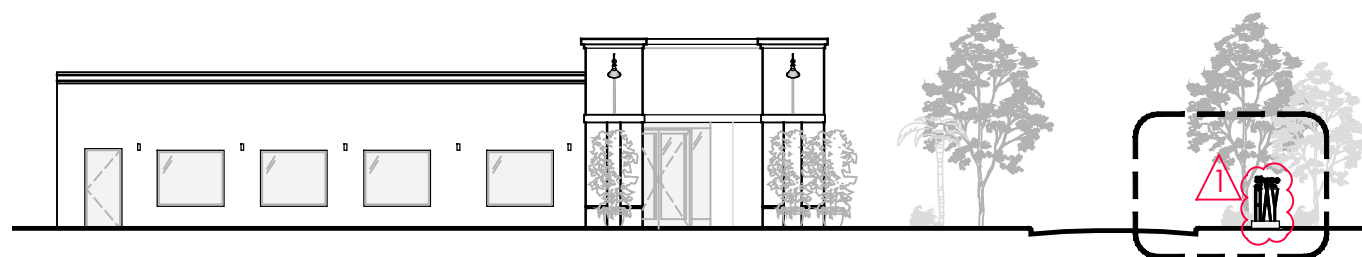
Issue Date: 03/08/2021

Revision Date:

Scale: As Noted

Sheet No.:

A1.02

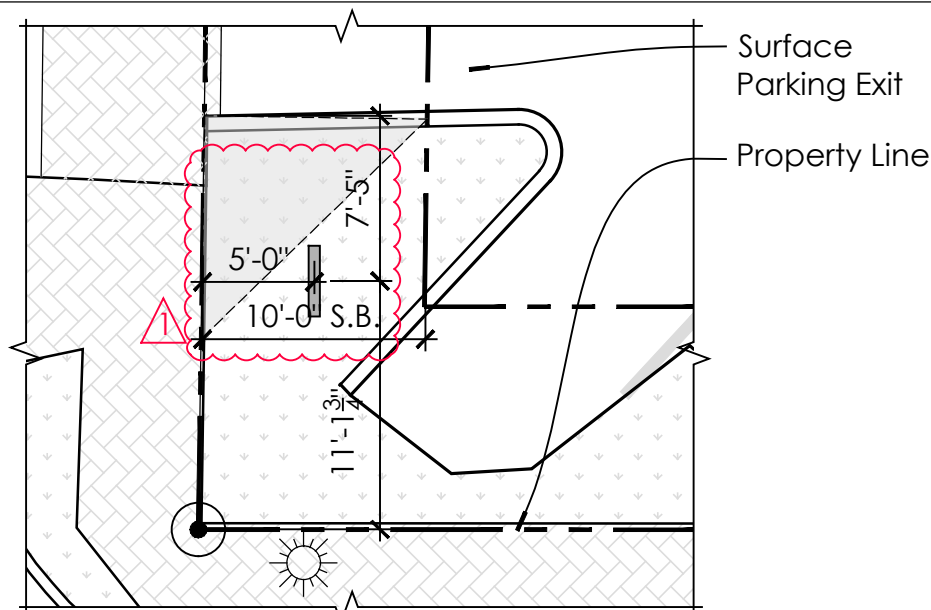
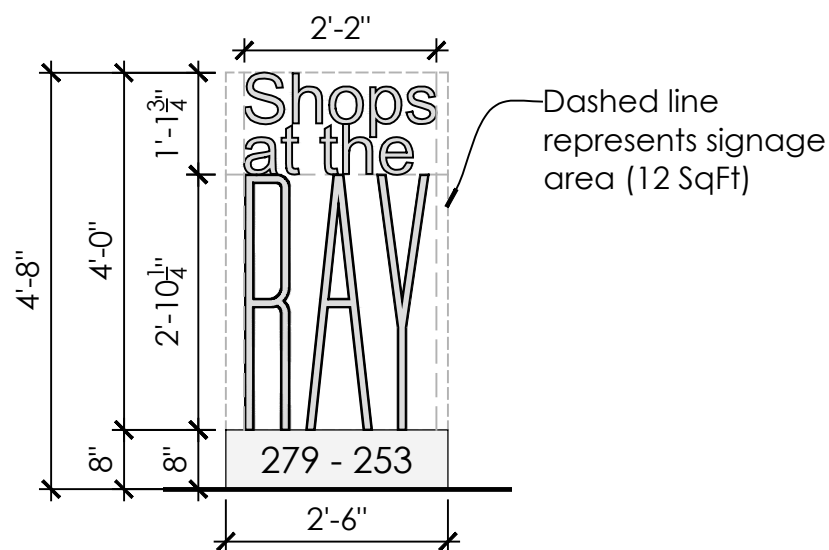


1a North Elevation
Signage area = 12 SqFt

2 A2.01
Free-standing Sign

1 Overall West Elevation - Signage Location

Scale: 1/16"=1'-0"



Free-standing sign at Parking's Exit
(NE 3rd Street) Scale: 1/8"=1'-0"

General Notes

- Powder-coated white Aluminum Free-standing monument signage. Free-standing signage to be fastened to an underground concrete mounting base
- "The RAY" Font: Custom Brandon Grotesque / Color: Powder Coat White
- "Shops" Font: Arial / Color: Powder Coat White
- Signage to be placed on existing landscape island towards the surface parking exit. The purpose of this drawing is to indicate the general design intent

2 Free-standing (Monument) Sign - Signage Dimensions

Scale: 1/2"=1'-0"

MENIN Shops at The Ray

253-279 NE 2nd Avenue
Delray Beach, FL 33444

The
RAY

233 NE 2nd Avenue
Delray Beach, FL 33444

Master Sign Application
Resubmittal (03/30/2021)

González Architects
Hospitality

14 NE 1st Ave, Ste 507
Miami, FL 33132
(305) 455 4216

Drawing:
Details and Elevations:
Free-standing Sign

Project: The Ray Hotel and
Shops at The Ray

Project No: 16015.2

Drawn By: AN, SZ

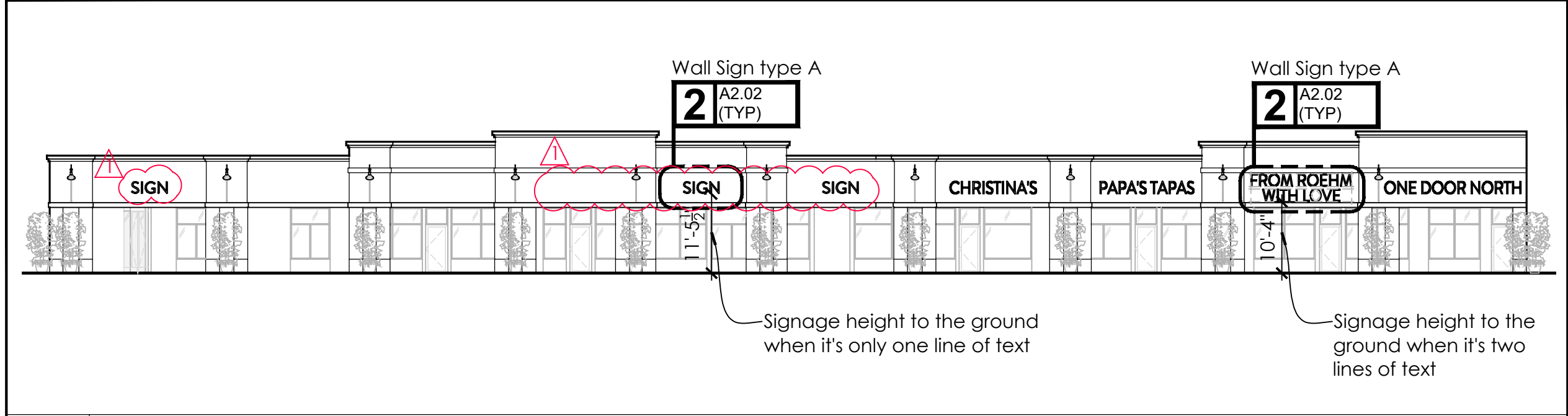
Issue Date: 03/08/2021

Revision Date:

Scale: As Noted

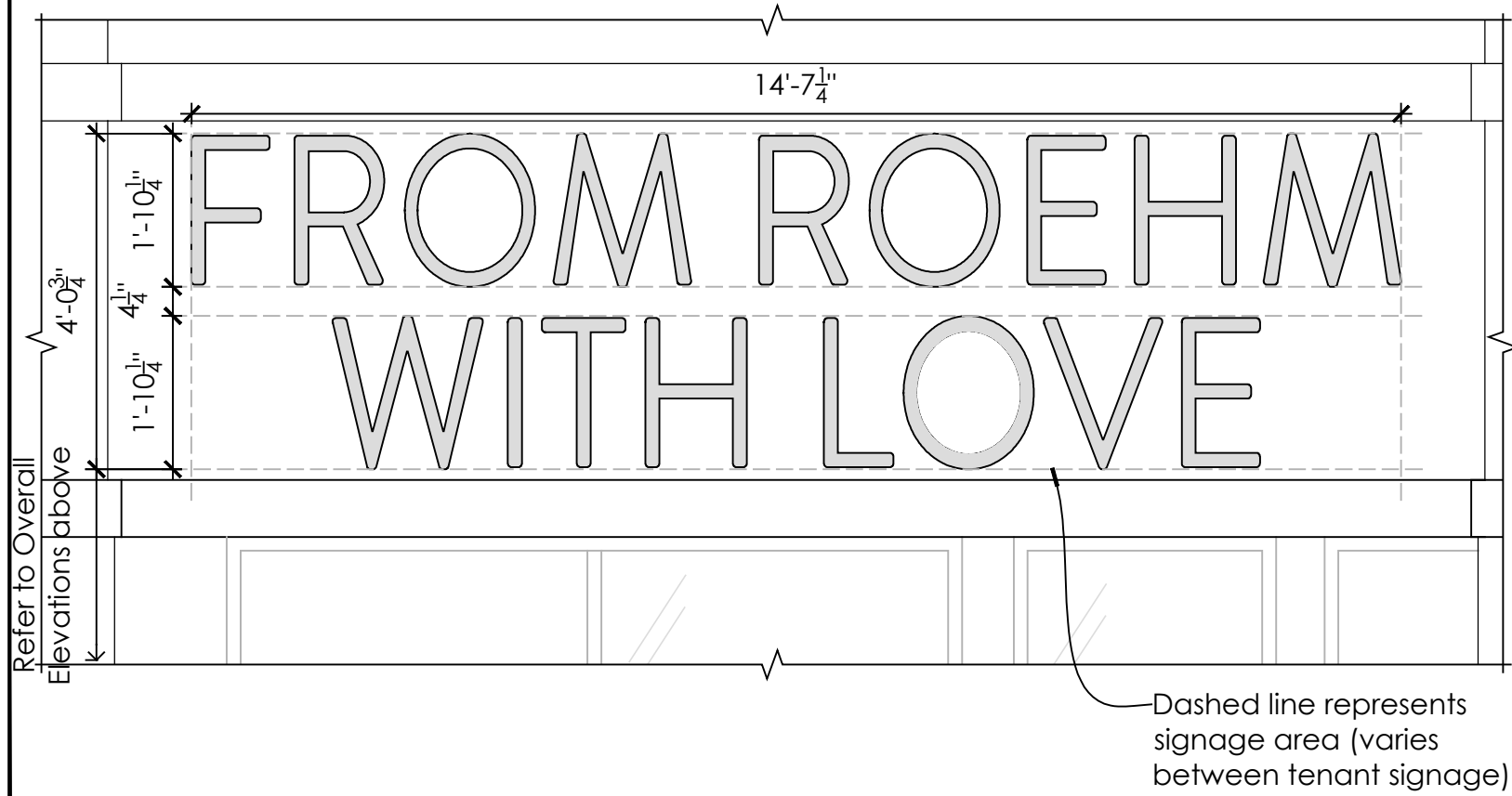
Sheet No.:

A2.01



1 Overall Elevations - Signage Location
Scale: 1/16"=1'-0"

Note: Signage area calculated in relation to building face (max of 15%)



General Notes

- Sign to have up to 2 lines of text, with a space of 4.25" inches in between lines.
- All letters to be Cap Letters.
- Letters size: 1'-10 1/4" high. Spacing in between letters to be adjusted as needed to achieve similar spacing look.
- Font: Brandon Grotesque / Color: Powder Coat Gold
- Typical signage at Shops tenant spaces must be from a National registered trademark, or private business logo approved by Owner before installation. If not, signage must follow tenant's given standards shown in this application.
- The purpose of this drawing is to indicate the general design intent

2 Wall Sign type A - Signage Dimensions
Scale: 1/2"=1'-0"

MENIN
Shops
at The Ray
253-279 NE 2nd Avenue
Delray Beach, FL 33444



233 NE 2nd Avenue
Delray Beach, FL 33444

Master Sign Application
Resubmittal (03/30/2021)



14 NE 1st Ave, Ste 507
Miami, FL 33132
(305) 455 4216

Drawing:
Details and Elevations:
Wall Sign type A

Project: The Ray Hotel and
Shops at The Ray

Project No: 16015.2

Drawn By: AN, SZ

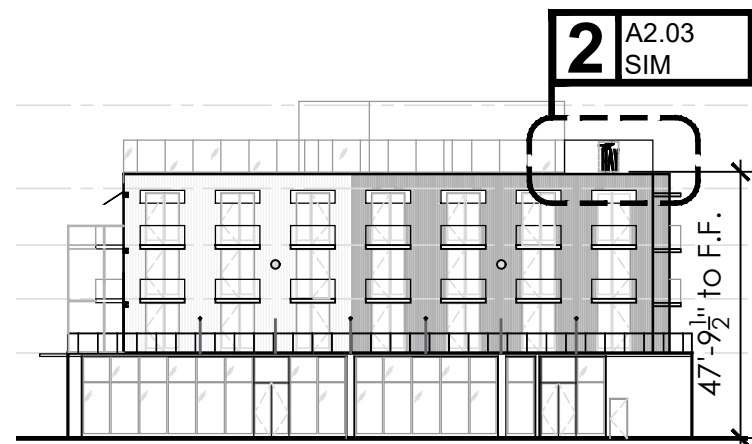
Issue Date: 03/08/2021

Revision Date:

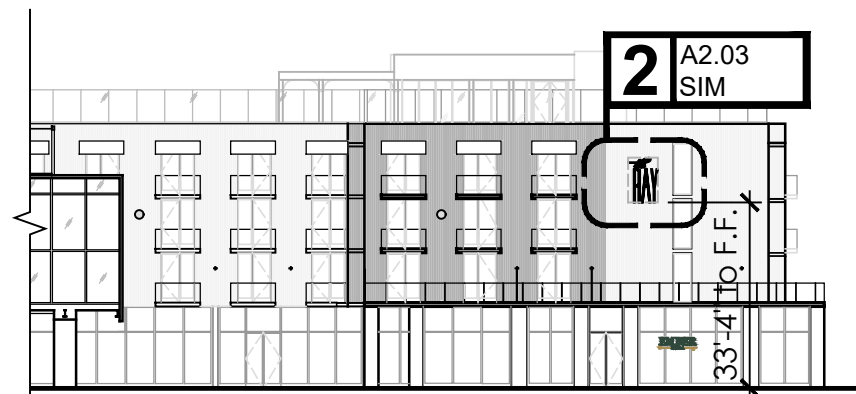
Scale: As Noted

Sheet No.:

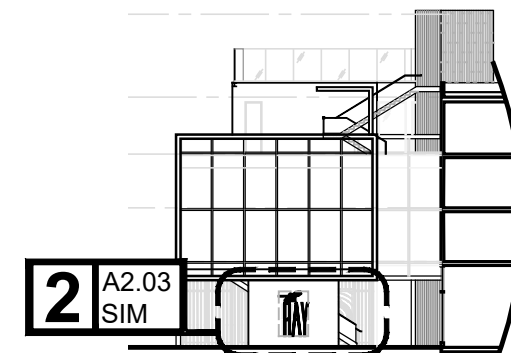
A2.02



1a South Elevation
Signage area = 0.40% (19 SqFt)

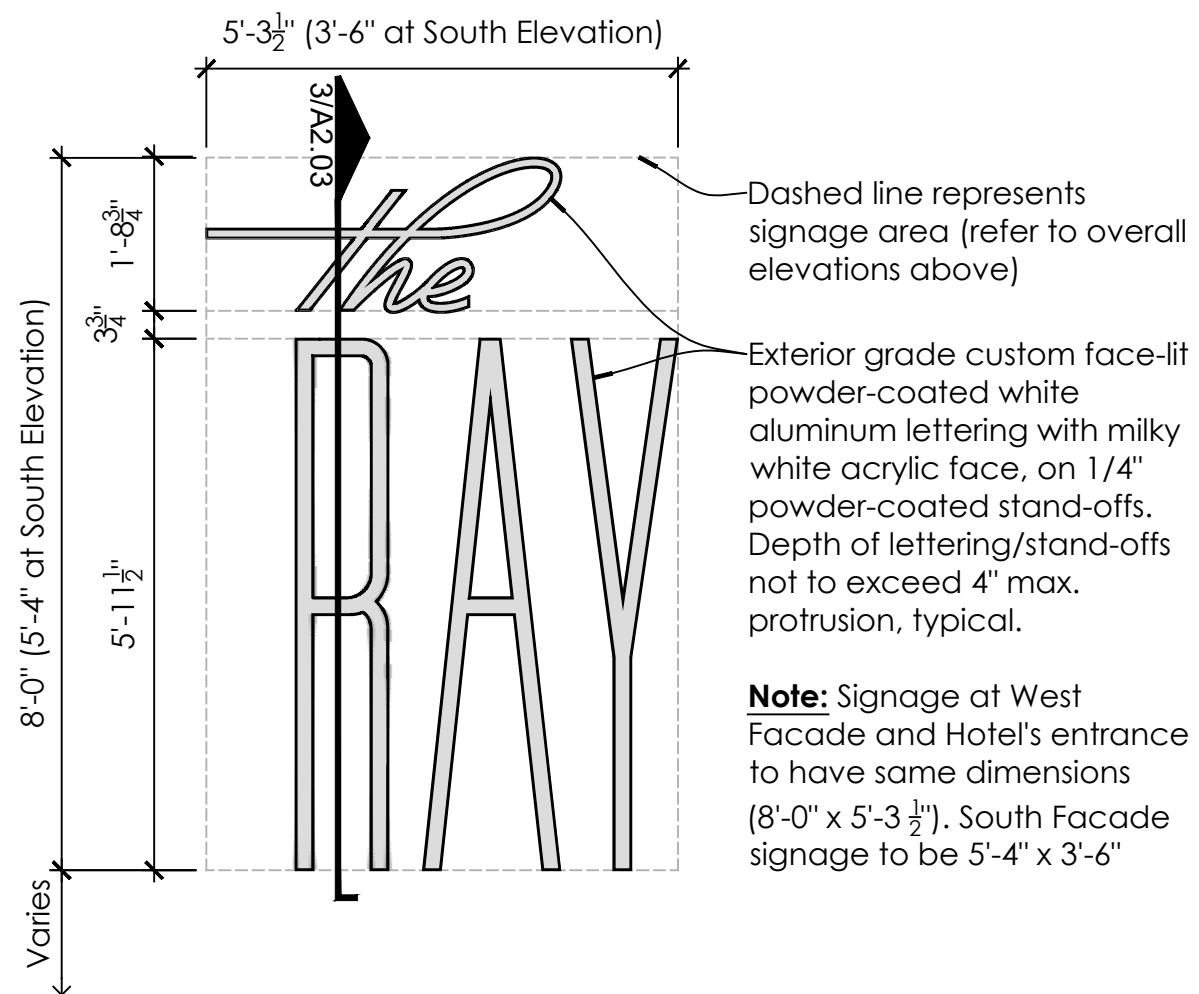


1b Partial West Elevation
Signage area = 1.20% (43 SqFt)



1c Cube's North Elevation
Signage area = 3.8% (43 SqFt)

1 Overall Elevation - Signage Location



3 Wall Sign type B - Signage Detail

MENIN
Shops
at The Ray

253-279 NE 2nd Avenue
Delray Beach, FL 33444

The RAY

233 NE 2nd Avenue
Delray Beach, FL 33444

Master Sign Application

14 NE 1st Ave. Ste 507
Miami, FL 33132
(305) 455 4216

Drawing:
Details and Elevations:
Wall Sign type B

Project: The Ray Hotel and Shops at The Ray

Project No: 16015.2

Drawn By: AN, SZ

Issue Date: 03/08/2021

Revision Date:

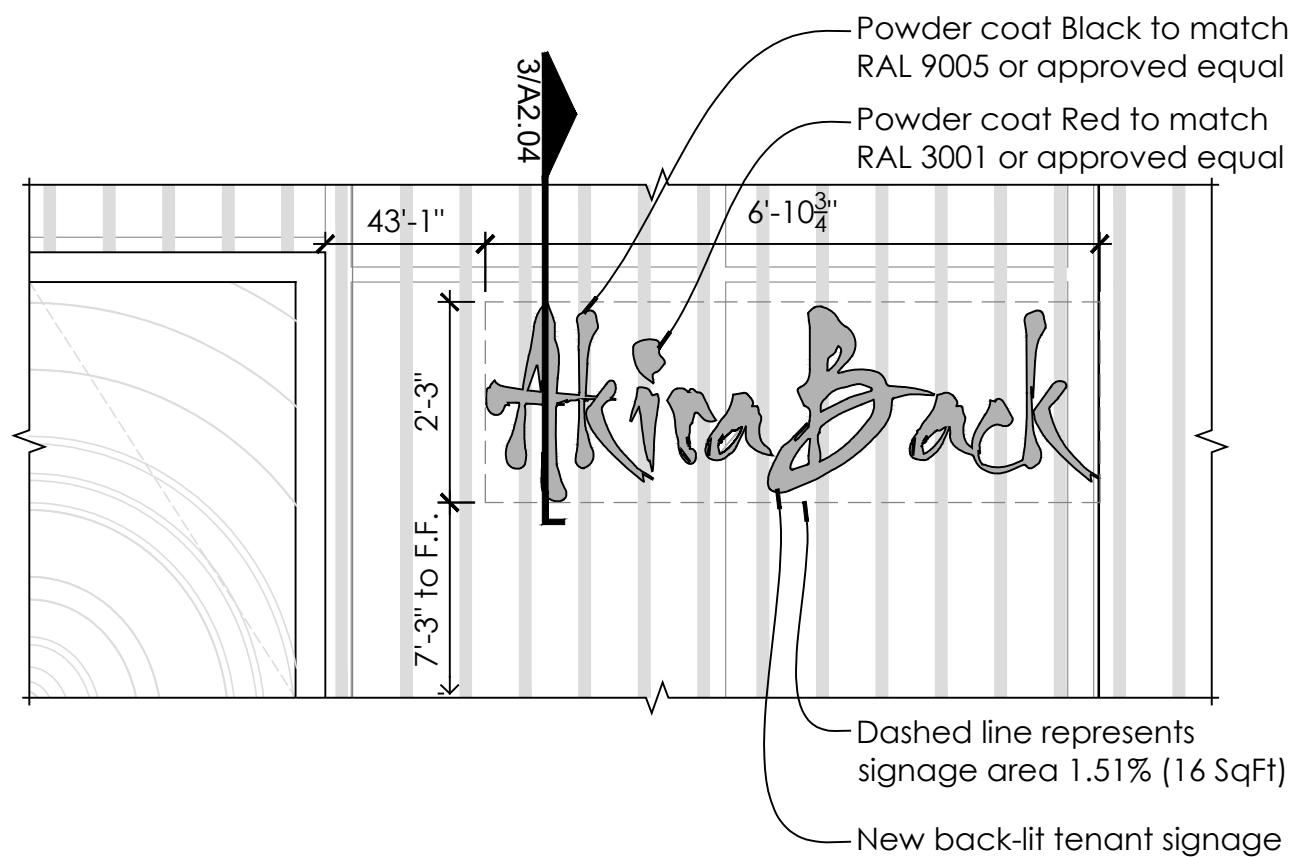
Scale: As Noted

Sheet No.:

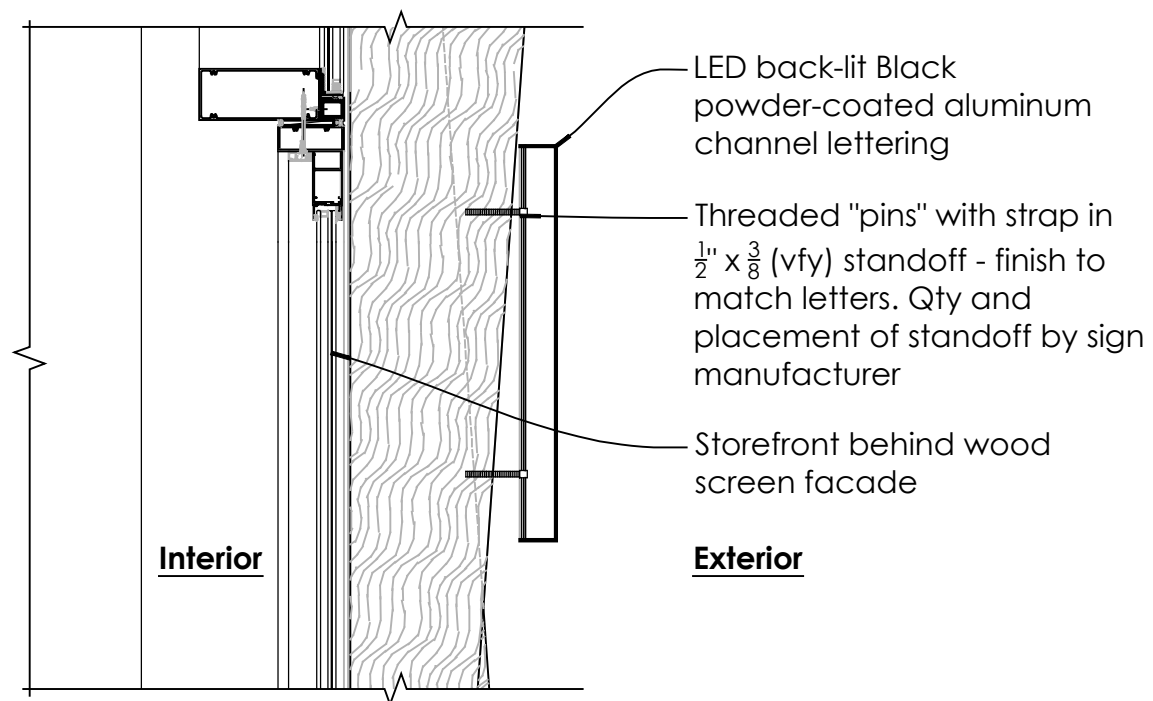
A2.03



1 Overall (partial) West Elevation - Signage Location
Scale: 1/16"=1'-0"



2 Wall Sign type C - Signage Dimensions
Scale: 1/2"=1'-0"



3 Wall Sign type C - Signage Detail
Scale: 1"=1'-0"

MENIN Shops at The Ray

253-279 NE 2nd Avenue
Delray Beach, FL 33444



233 NE 2nd Avenue
Delray Beach, FL 33444

Master Sign Application



14 NE 1st Ave, Ste 507
Miami, FL 33132
(305) 455 4216

Drawing:
Details and Elevations:
Wall Sign type C

Project: The Ray Hotel and
Shops at The Ray

Project No: 16015.2

Drawn By: AN, SZ

Issue Date: 03/08/2021

Revision Date:

Scale: As Noted

Sheet No.:

A2.04

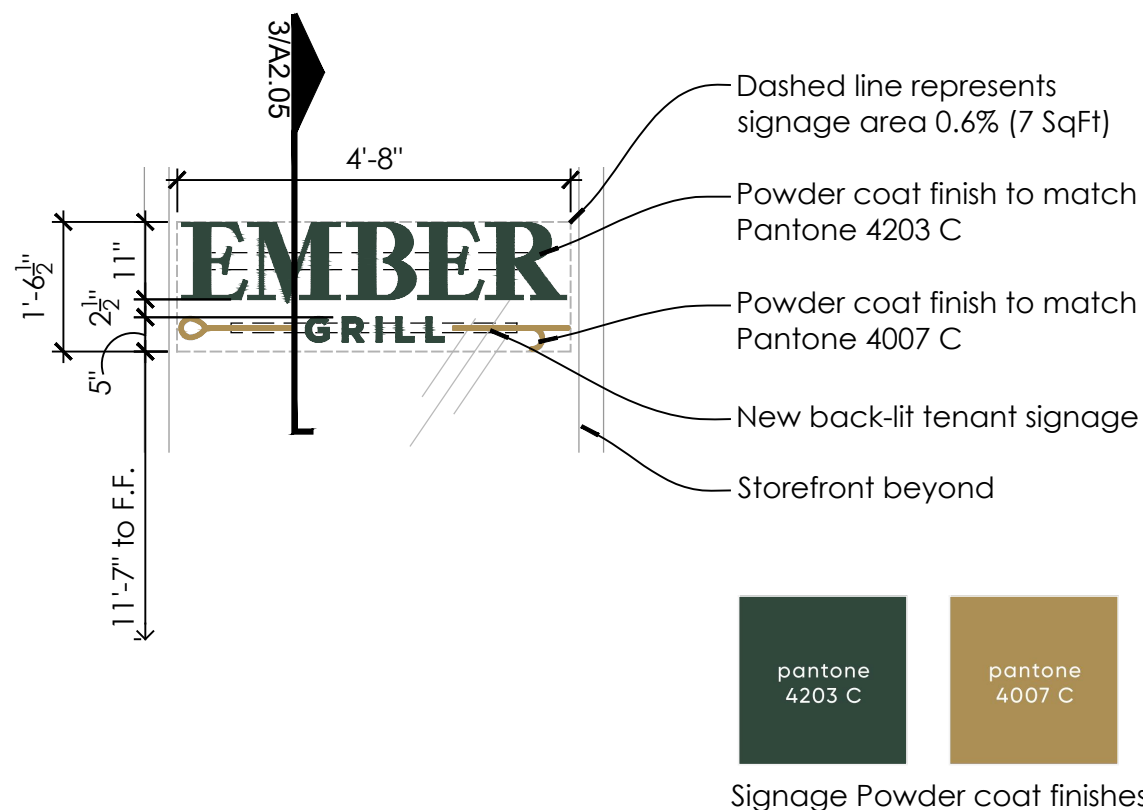


1a Partial West Elevation
Signage area = 0.6% (7 SqFt)

2 A2.05

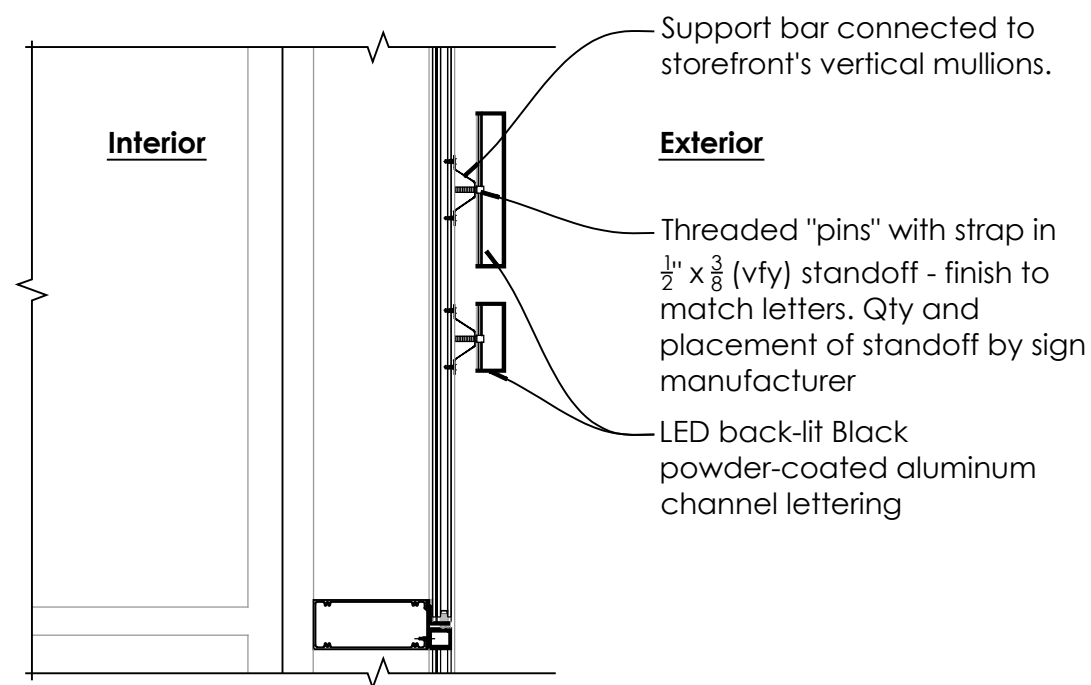
1 Overall West Elevation - Signage Location

Scale: 1/16"=1'-0"



2 Wall Sign type D - Signage Dimensions

Scale: 1/2"=1'-0"



3 Wall Sign type D - Signage Detail

Scale: 1"=1'-0"

MENIN

Shops
at The Ray

253-279 NE 2nd Avenue
Delray Beach, FL 33444

The
RAY

233 NE 2nd Avenue
Delray Beach, FL 33444

Master Sign Application

González Architects
Hospitality

14 NE 1st Ave. Ste 507
Miami, FL 33132
(305) 455 4216

Drawing:
Details and Elevations:
Wall Sign type D

Project: The Ray Hotel and
Shops at The Ray

Project No: 16015.2

Drawn By: AN, SZ

Issue Date: 03/08/2021

Revision Date:

Scale: As Noted

Sheet No.:

A2.05



1.1 Free-standing Sign
Overall North Elevation (N.E. 3rd street)



1.2 Free-standing Sign
Surface Parking Exit only view (N.E. 3rd street, Looking into the Shops)

1 Renderings - Freestanding Sign

MENIN Shops at The Ray

253-279 NE 2nd Avenue
Delray Beach, FL 33444

The
RAY

233 NE 2nd Avenue
Delray Beach, FL 33444

Master Sign Application
Resubmittal (03/30/2021)

González Architects
Hospitality

14 NE 1st Ave, Ste 507
Miami, FL 33132
(305) 455 4216

Drawing: Renderings
Freestanding Sign

Project: The Ray Hotel and
Shops at The Ray

Project No: 16015.2

Drawn By: AN, SZ

Issue Date: 03/08/2021

Revision Date:

Scale: As Noted

Sheet No.:

A3.01a



1.1 Wall Sign Type A
Overall West Elevation (N.E. 2nd Ave)



1.2 Wall Sign Type A
Enlarged West Elevation (Looking into Southern end of the Shops)

MENIN Shops at The Ray

253-279 NE 2nd Avenue
Delray Beach, FL 33444

The
RAY

233 NE 2nd Avenue
Delray Beach, FL 33444

Master Sign Application
Resubmittal (03/30/2021)

González Architects
Hospitality

14 NE 1st Ave, Ste 507
Miami, FL 33132
(305) 455 4216

Drawing: Renderings
Wall Sign Type A

Project: The Ray Hotel and
Shops at The Ray

Project No: 16015.2

Drawn By: AN, SZ

Issue Date: 03/08/2021

Revision Date:

Scale: As Noted

Sheet No.:

A3.02



1.1 Wall Sign Type B
Overall West Elevation (N.E. 2nd Ave)



1.1 Wall Sign Type B
Overall South Elevation (N.E. 2nd Street)



1.2 Wall Sign Type B
Enlarged Partial West Elevation (N.E. 2nd Ave)



1.2 Wall Sign Type B
Enlarged Partial SW Elevation (N.E. 2nd Ave)



1.2 Wall Sign Type B
Enlarged South Elevation (N.E. 2nd Street)

MENIN Shops at The Ray

253-279 NE 2nd Avenue
Delray Beach, FL 33444

The
RAY

233 NE 2nd Avenue
Delray Beach, FL 33444

Master Sign Application

González Architects
Hospitality

14 NE 1st Ave, Ste 507
Miami, FL 33132
(305) 455 4216

Drawing: Renderings:
Wall Sign Type B

Project: The Ray Hotel and
Shops at The Ray

Project No: 16015.2

Drawn By: AN, SZ

Issue Date: 03/08/2021

Revision Date:

Scale: As Noted

Sheet No.:

A3.03



1.1 Wall Sign Type C
Overall West Elevation (N.E. 2nd Ave)



1.2 Wall Sign Type C
Enlarged West Elevation (Akira Back Restaurant)

MENIN Shops at The Ray

253-279 NE 2nd Avenue
Delray Beach, FL 33444

The
RAY

233 NE 2nd Avenue
Delray Beach, FL 33444

Master Sign Application

González Architects
Hospitality

14 NE 1st Ave, Ste 507
Miami, FL 33132
(305) 455 4216

Drawing: Renderings
Wall Sign Type C

Project: The Ray Hotel and
Shops at The Ray

Project No: 16015.2

Drawn By: AN, SZ

Issue Date: 03/08/2021

Revision Date:

Scale: As Noted

Sheet No.:

A3.04



1.1 Wall Sign Type D
Overall West Elevation (N.E. 2nd Ave)
Refer to render below for enlarged view



1.3 Wall Sign Type D
Zoom-in West Elevation (Looking into Tenant Space)

M E N I N
Shops
at The Ray

253-279 NE 2nd Avenue
Delray Beach, FL 33444



233 NE 2nd Avenue
Delray Beach, FL 33444

Master Sign Application



14 NE 1st Ave. Ste 507
Miami, FL 33132
(305) 455 4216

Drawing: Renderings
Wall Sign Type D

Project: The Ray Hotel and
Shops at The Ray

Project No: 16015.2

Drawn By: AN, SZ

Issue Date: 03/08/2021

Revision Date:

Scale: As Noted

Sheet No.:

A3.05