

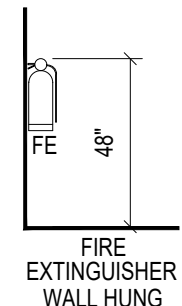
SIGNAGE LEGEND:				
DS	PROVIDE READILY VISIBLE AND DURABLE SIGNAGE COMPLYING WITH F.B.C. 1008.1.9.3 (2.2) STATING: "THIS DOOR TO REMAIN UNLOCKED WHEN BUILDING IS OCCUPIED DURING NORMAL BUSINESS HOURS"; SHALL BE INSTALLED ON THE EGRESS SIDE ON OR ADJACENT TO THE DOOR. 60 INCHES ABOVE FINISHED FLOOR TO THE CENTER-LINE OF SIGN. LETTERING SHALL BE MIN. (1) INCH HIGH ON CONTRASTING BACKGROUND.			

Hardware Group No. 1 - Exterior Storefront Door				
Provide each PR door(s) with the following:				
Qty	Description	Catalog Number	Finish	Mfr
3EA	HINGE	5BB1 4.5 X 4.5 NRP	630	IVE
1EA	MORTISE CYLINDER	C987	626	FAL
1EA	SFIC CORE	C606	626	FAL
1EA	SURFACE CLOSER	4040XP SCUSH TBWMS	689	AL
1EA	PA MOUNTING PLATE	4040XP-18PA	689	LCN

Hurricane code compliant opening.  
Balance of hardware by storefront manufacturer.  
Operational Description 5 Knuckle Ball Bearing Full Mortise Hinge  
Standard Weight 4.5"x4.5" Non-Removable Pin 630  
20-057 - FSIC Conventional, 6 Pin Self-Closing Parallel Arm Mounting  
Plate for applications with a Top-Rail less than 4-3/8"

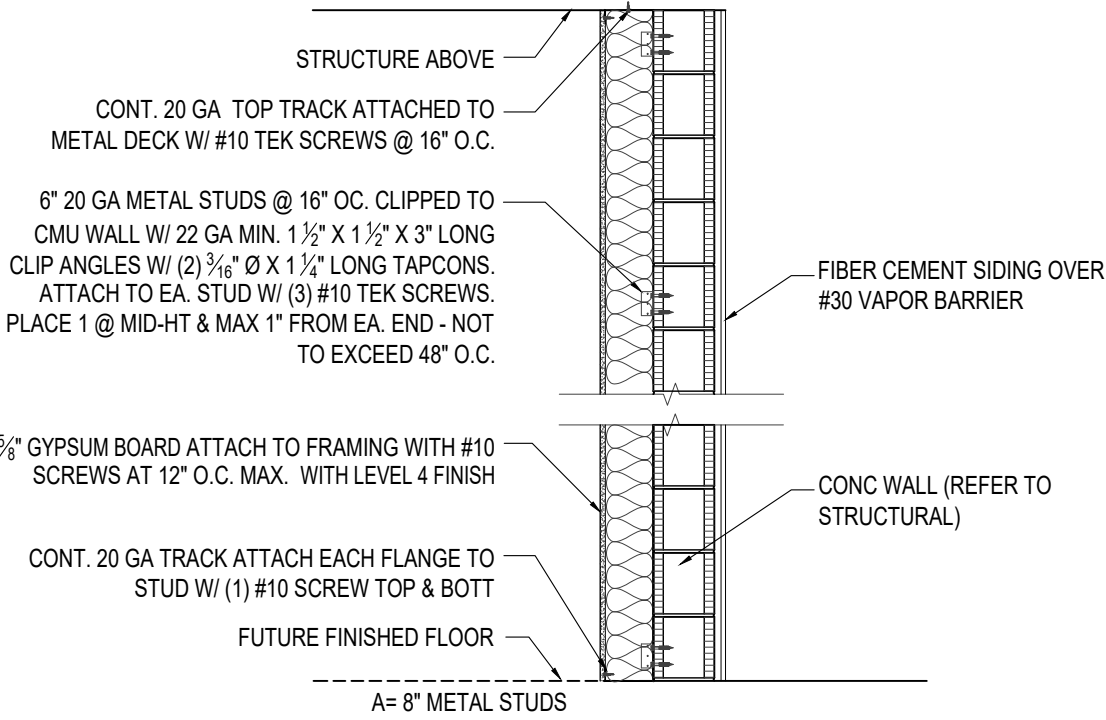
Hardware Group No. 2 - Exterior Door				
Provide each pr door(s) with the following:				
Qty	Description	Catalog Number	Finish	Mfr
3EA	HINGE	MCKIMP891NRP	US32D	Mac
1EA	MORTISE CYLINDER	LN2049C SHELL 7P	626	FAL
1EA	COMBINATION I/C CORE	FALA100C		FAL
1EA	PEEPHOLE 180	14002608 DU SEUNG DS/1000	BLK	DS
1EA	SURFACE CLOSER	DORMA8916 AF89P	AL	DOR
1EA	EXIT DEVICE	14002608 HV40 EB	628	DE
1EA	KICK PLATE	14009878 8X34	US32D	RO
1EA	NON-ELECTRIC DOOR CHIME	NUMCH304		NU
1SET	DOOR WEATHER STRIP	13717 17"	BLK	NGP
1EA	DOOR SWEEP	PEM18062 42"	DNB	PEM
1EA	THRESHOLD	566A 36" MSLA-10	AL	ZER

DOOR SCHEDULE									
OPENING NUMBER	DOOR			FRAME				REMARKS	
	SIZE	MAT'L	TYPE	MAT'L	JAMB DEPTH	HEAD	JAMB SILL	HDWR	
01	(2) 3'-0" x 7'-0" X 1 3/4"	AL/GL	B	AL	5"	02/A-6	03/A-6 04/A-6	1	
02	(2) 3'-0" x 7'-0" X 1 3/4"	AL/GL	B	AL	5"	02/A-6	03/A-6 04/A-6	1	
03	3'-6" x 7'-0" X 1 3/4"	HM	A	HM	5 3/4"	05/A-6	06/A-6 07/A-6	2	
DOOR NOTES:									
1. COORDINATE/CONFIRM ALL DOOR HARDWARE WITH OWNER PRIOR TO CONSTRUCTION.									



### 03 F.E. MOUNTING HEIGHT DETAIL

SCALE: N.T.S.



### 04 W1 WALL TYPE

SCALE: 1/2" = 1'-0"

### BUILDING CODE INFORMATION

BASED ON FLORIDA BUILDING CODE 7TH EDITION (2021)

TYPE IIB-CONSTRUCTION  
ONE STORY BUILDING  
NON-SPRINKLERED  
OCCUPANCY: A-2 ASSEMBLY  
AREA : 2,564 SF

OCCUPANT LOAD CALCULATIONS:  
79 OCCUPANTS (REFER TO FLOOR PLAN)

LIFE SAFETY SYSTEM  
EMERGENCY LIGHTING AND EXIT SIGNS  
PANIC HARDWARE

EXIT REQUIREMENTS:  
DEAD END LIMIT MAX CONDITION  
TRAVEL DISTANCE TO EXIT MAX CONDITION  
COMMON PATH OF TRAVEL

20 FT  
200 FT  
75 FT

### LIFE SAFETY NOTES

- OCCUPANCY TYPE SHALL BE GROUP A-2, ASSEMBLY
- FIRE STOPPING AND DRAFT STOPPING SHALL BE PROVIDED AT ANY CONCEALED SPACE IN WHICH EXPOSED MATERIAL HAS A FLAME-SPREAD RATING LESS THAN CLASS-A.
- FIRE RATED WALL ASSEMBLIES SHALL EXTEND FULLY FROM THE FLOOR TO THE STRUCTURE & DECK ABOVE. ALL PENETRATIONS OF RATED ASSEMBLIES SHALL BE PROTECTED PER NFPA 101, BY FIRE DAMPERS, SLEEVES OR FIRE CAULKING BY A U.L. APPROVED METHOD.
- PROVIDE UL RATED ASSEMBLIES AT ALL PIPE, DUCTWORK, STRUCTURAL STEEL AND METAL JOIST PENETRATION OF FIRE-RATED WALLS.
- BUILDING EXIT DOORS REQUIRED BY CODE SHALL SWING IN THE DIRECTION OF EGRESS UNLESS THE OCCUPANT LOAD IS LESS THAN 50.

### REQUIREMENTS

- ALL CORRIDORS AND NORMALLY OCCUPIED ROOMS SHALL BE EQUIPPED WITH EMERGENCY LIGHTING.
- FIRE EXTINGUISHERS SHALL BE PLACED AT INTERVALS NOT EXCEEDING A TRAVEL DISTANCE OF 75'.

### LIFE SAFETY SYMBOLS LEGEND

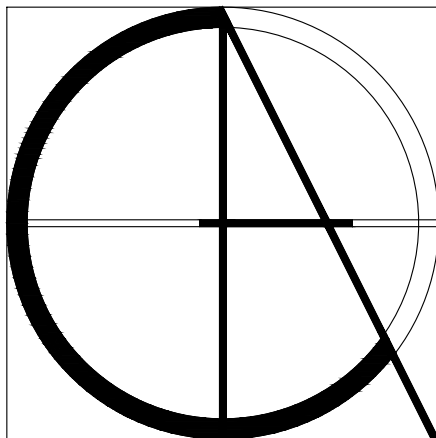
- TRAVEL DISTANCE
- PRIMARY MEANS OF EGRESS
- WALL MOUNTED FIRE EXTINGUISHER
- OCCUPANT LOAD
- OPENING EGRESS CAPACITY
- EMERGENCY LIGHT
- EXIT SIGN LIGHT

### CEILING LEGEND

- WALL MTD. EXIT LIGHT FIXTURE
  - WALL MTD. EXTERIOR LIGHT FIXTURE
  - SURFACE MTD. EXTERIOR DOWNLIGHT LIGHT FIXTURE
  - SUSPENDED EMERGENCY LIGHT FIXTURE
  - SUSPENDED LIGHT FIXTURE
- NOTE:  
1. REFER TO MECHANICAL & ELECTRICAL PLANS FOR ADDITIONAL INFORMATION AND EXTERIOR ELEVATIONS.

### WALL LEGEND

- CMU WALL
- FURRING
- FUTURE PARTITION



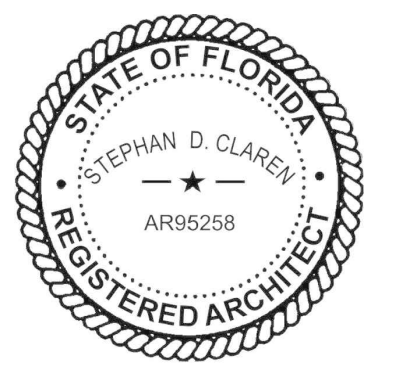
Claren Architecture + Design, Inc.

AA26002865  
6400 CONGRESS AVE, SUITE 2150  
BOCA RATON, FL 33487  
561.961.4884  
www.clarenarchitecture.com

New Building For:

Starbucks

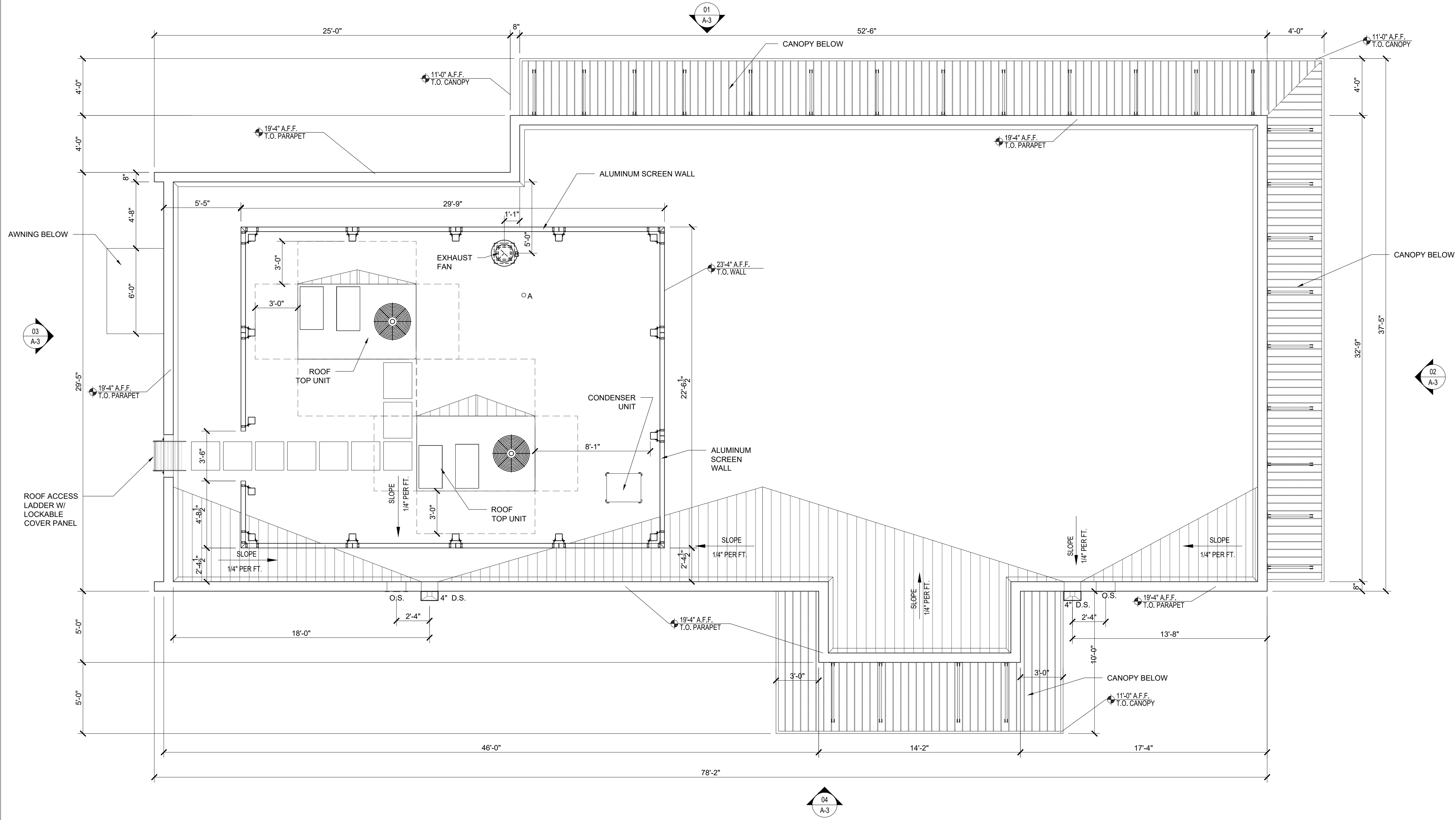
4920 W Atlantic Ave  
Delray Beach, FL 33445



PROJECT #	20-054
DATE	3-11-2021
REV #	DATE
1	
2	
3	
4	
5	
6	
7	
8	
9	
10	
SHEET #	

A-1

COPYRIGHT 2020



### ROOF PLAN SYMBOLS LEGEND

DIRECTION OF ROOF SLOPE:  
1/4" PER FOOT MINIMUM

TAPERED ROOF SADDLE OR CRICKET

CANOPY ROOF

PARAPET WALL

O.S. OVERFLOW SCUPPER

D.S. DOWN SPOUT W/ COLLECTION BOX

ROOF ACCESSORY LEGEND  
A - EXHAUST FAN FOR FUTURE TOILET, (REFER TO MECHANICAL)  
B - 3" VTR FOR FUTURE SANITARY TERMINATE 12" BELOW ROOF DECK

NOTES:  
1. ALL ROOF CURBS & EQUIPMENT SHALL BE ATTACHED TO THE ROOF PER THE MANUFACTURER'S RECOMMENDATIONS & SHALL MEET ALL REQUIRED WIND LOADS

### ROOFING SPECIFICATIONS:

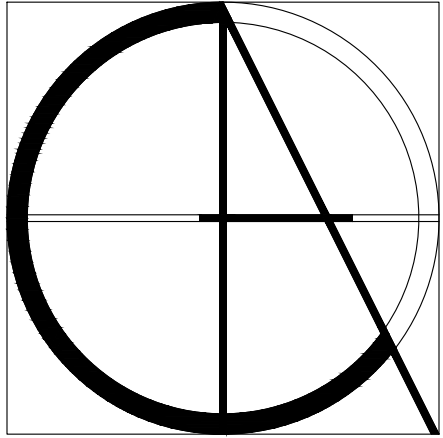
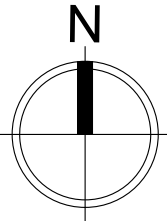
TPO ROOF SYSTEM BY JOHNS MANVILLE OR APPROVED EQUAL  
GUARANTEE TERM: 20 YR. (IND.) NO DOLLAR LIMIT  
JOHNS MANVILLE SPECIFICATION #: ST6RM-S  
JOHNS MANVILLE FBC HVHZ: FL16758-R15  
PAGE: 61 OF 105, S-M-14  
PSF: -60, JM TPO MECHANICALLY ATTACHED  
LIMITATION: #7

FIELD REQUIREMENTS:  
1. INSTALL (1) LAYER JOHNS MANVILLE ENERGY 3 ISO, 3.5" THICKNESS. (MECHANICALLY ATTACHED)  
2. INSTALL JOHNS MANVILLE TAPERED ENERGY 3 ISO, CRICKETS WHERE NEEDED. (MECHANICALLY ATTACHED)  
3. INSTALL JOHNS MANVILLE 60 MILL TPO, (MECHANICALLY ATTACHED 6" ON CENTER) PER CODE LISTED ABOVE.

FLASHING REQUIREMENTS:  
1. SHEET FLASHING: MANUFACTURER'S INTERNALLY REINFORCED OR SCRIM REINFORCED, SMOOTH BACKED MEMBRANE WITH SAME THICKNESS AND COLOR AS SHEET MEMBRANE FULLY ADHERED, BASIS OF DESIGN: JM TPO  
2. SHEET FLASHING-SELF-ADHERED (TO BE USED AT PARAPET OVER 5 FEET IN HEIGHT); 60 MIL (1.5 MM) THICK, MANUFACTURER'S INTERNALLY REINFORCED OR SCRIM REINFORCED WITH WELDABLE SELVAGE EDGES ON EACH SIDE OF ROLL, ONE ENCAPSULATED EDGE AND SELF-ADHERING CAPABILITIES IN A WIDE INSTALLATION TEMPERATURE RANGE. BASIS OF DESIGN: JM TPO SA-FLASHING MEMBRANE

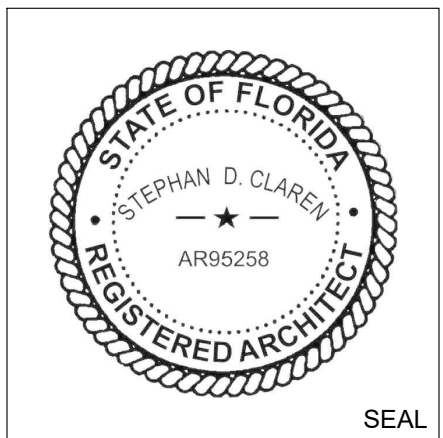
01

ROOF PLAN  
SCALE: 1/4" = 1'-0"



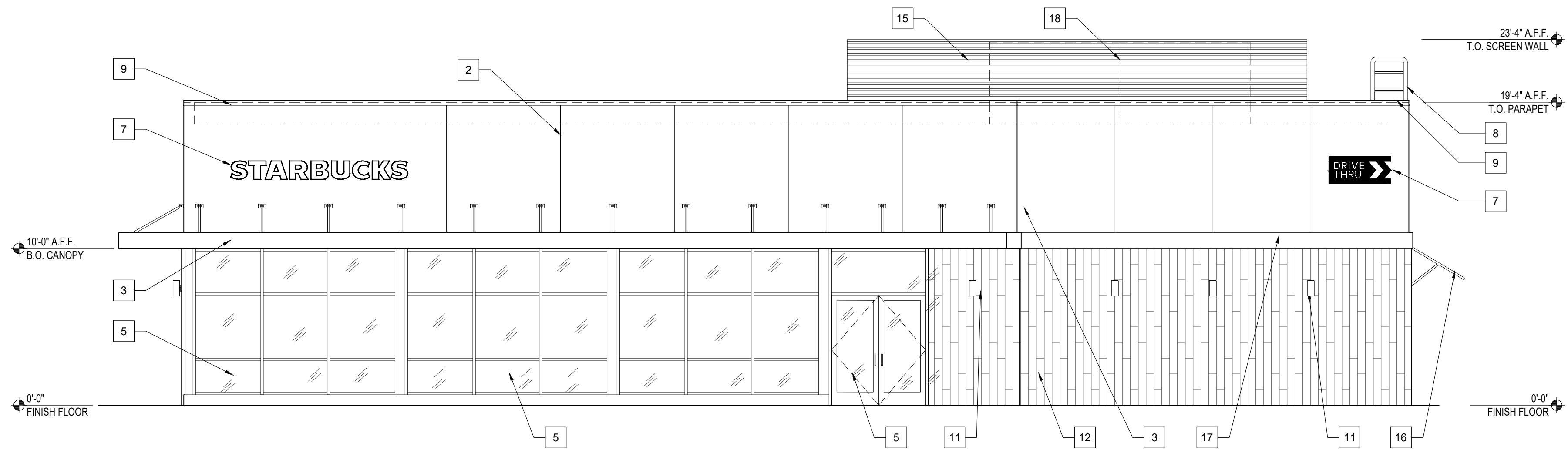
Claren Architecture + Design, Inc.  
AA26002865  
6400 CONGRESS AVE, SUITE 2150  
BOCA RATON, FL 33487  
561.961.4884  
www.clarenarchitecture.com

New Building For:  
**Starbucks**  
4920 W Atlantic Ave  
Delray Beach, FL 33445

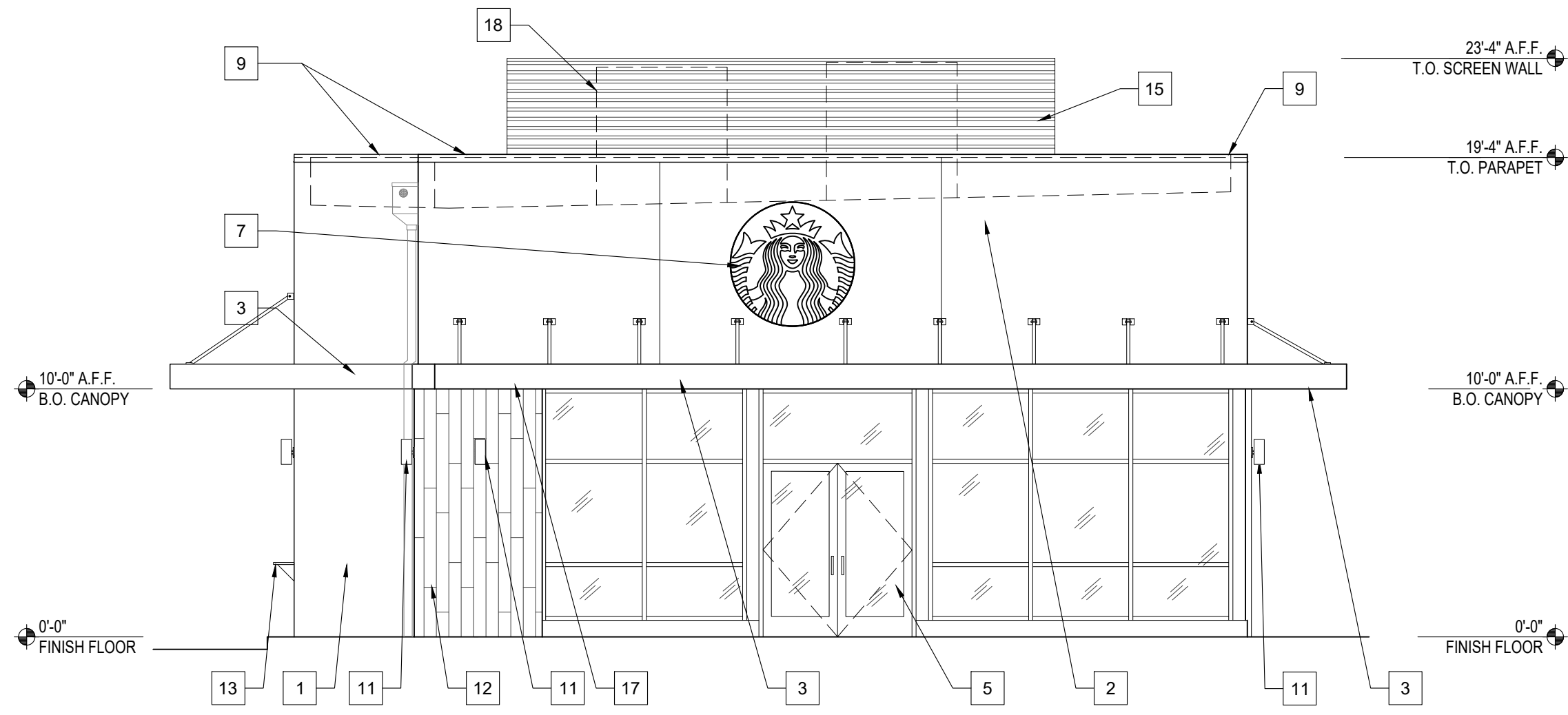


PROJECT #	20-054
DATE	3-11-2021
REV #	DATE
△	
△	
△	
△	
△	
△	
SHEET #	

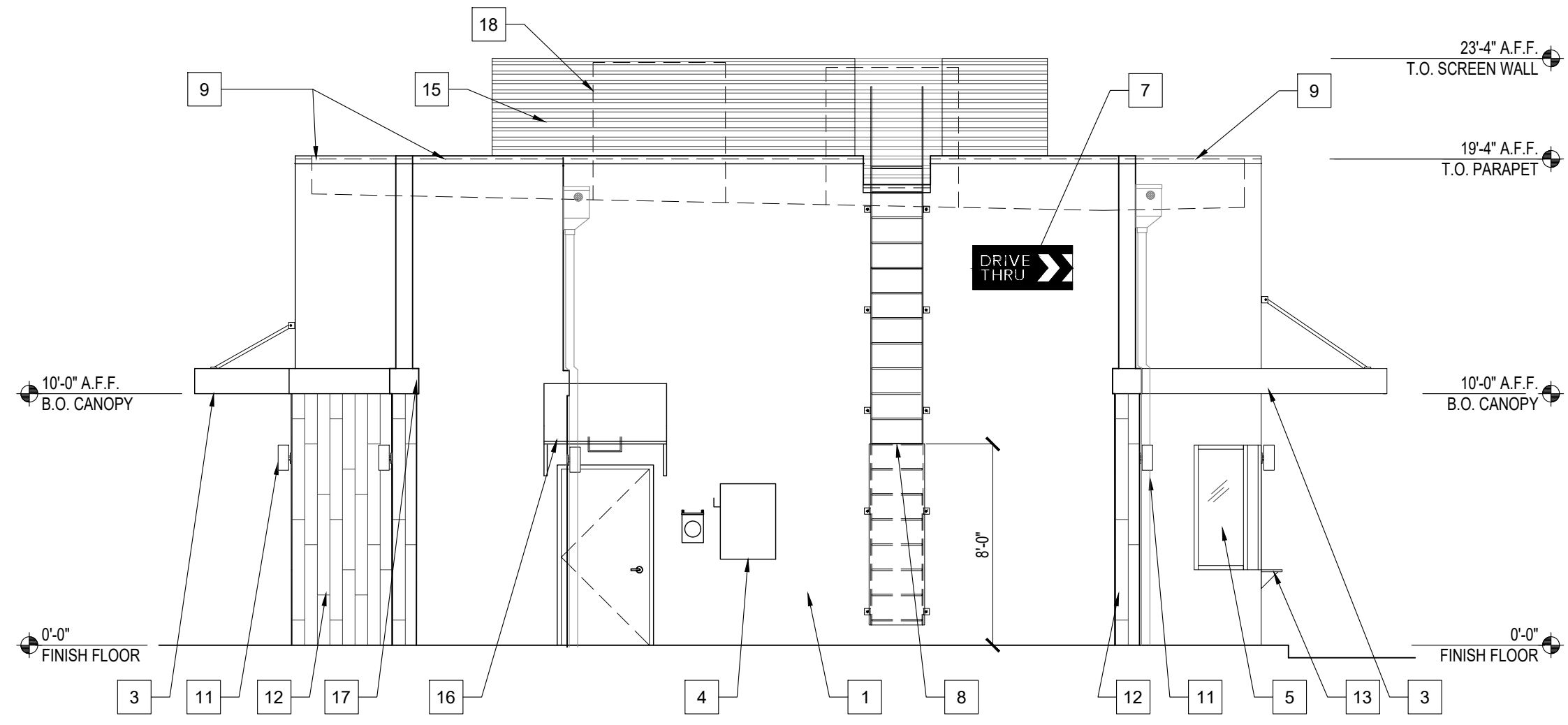
A-2



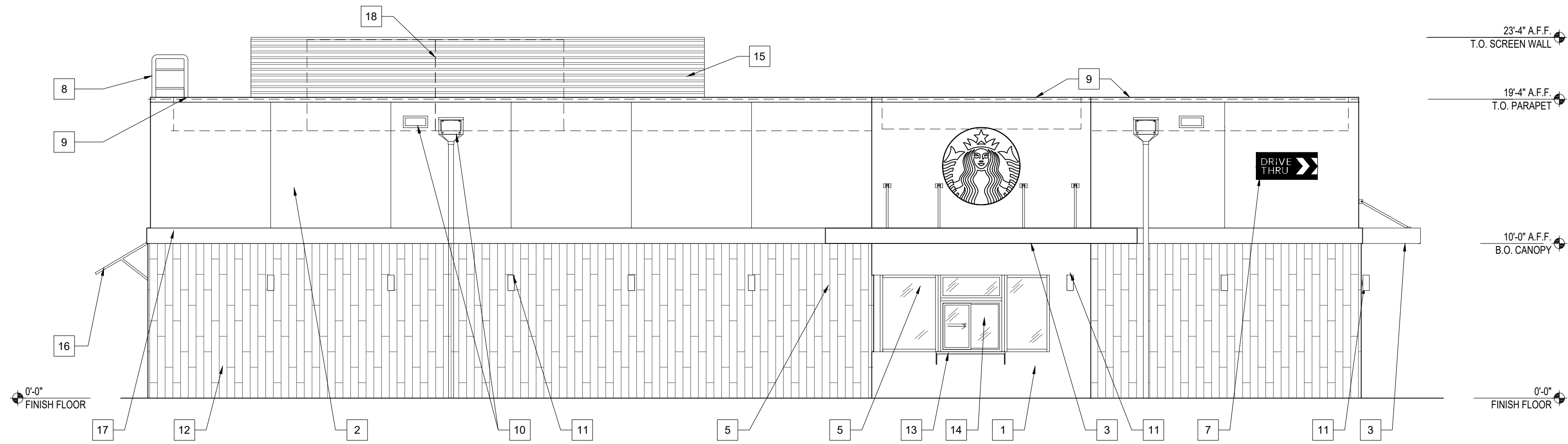
01 NORTH ELEVATION  
SCALE: 3/16" = 1'-0"



02 EAST ELEVATION  
SCALE: 3/16" = 1'-0"

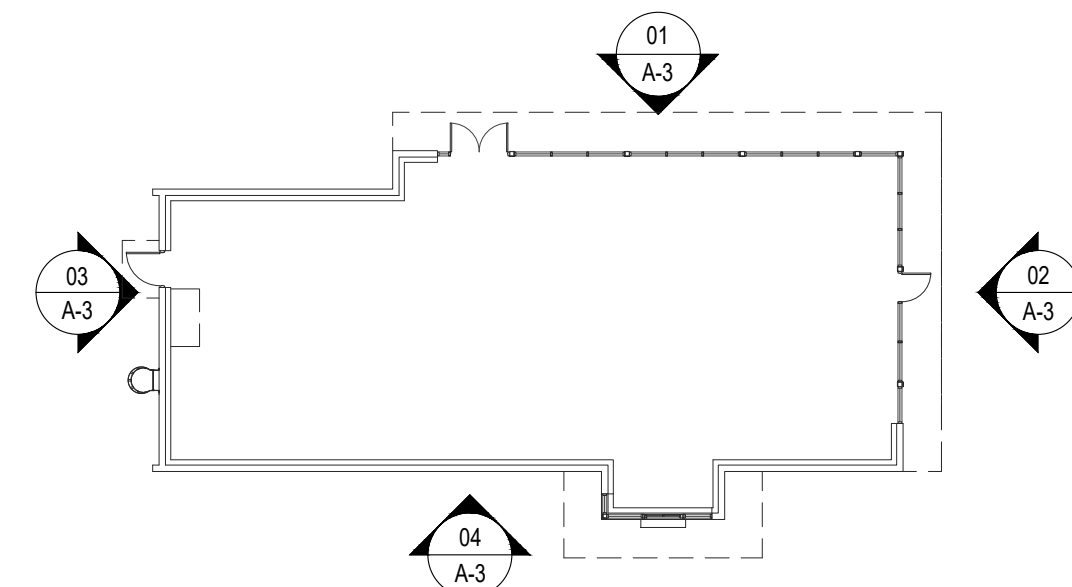


03 WEST ELEVATION  
SCALE: 3/16" = 1'-0"

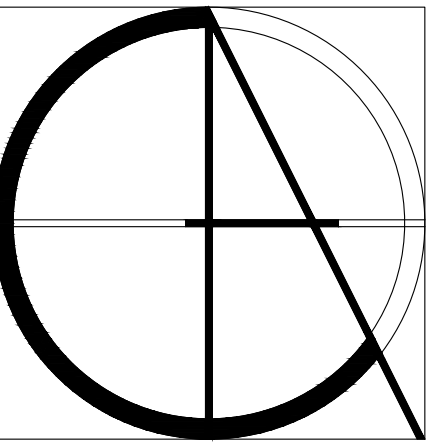


04 SOUTH ELEVATION  
SCALE: 3/16" = 1'-0"

MATERIAL LEGEND	
1	SMOOTH STUCCO FINISH
2	SMOOTH STUCCO FINISH W/ 1/2" REVEALS
3	POWDERCOATED ALUMINUM CANOPY (FLAT BLACK)
4	ELECTRICAL EQUIPMENT. REFER TO ELECTRICAL PLANS
5	IMPACT RATED ANODIZED ALUMINUM STOREFRONT SYSTEM W/ FLAT BLACK FRAME
6	IMPACT RATED PAINTED HOLLOW METAL DOOR/FRAME (FLAT BACK)
7	STARBUCKS SIGNAGE
8	ROOF ACCESS LADDER W/ LOCKABLE PANEL UP TO 8'-0" PAINTED TO MATCH WALL COLOR
9	PRE-FINISHED ALUMINUM COPING (FLAT BLACK)
10	CONDUCTOR BOX/ DOWNLEADER & OVERFLOW SCUPPER (PAINTED FLAT BLACK)
11	DECORATIVE WALL SCONCES
12	FIBER CEMENT SIDING
13	56"x10"x1" OBSIDIAN PAPERSTONE SHELF W/STAINLESS STEEL BRACKETS AS REQUIRED
14	IMPACT RATED ANODIZED ALUMINUM DRIVE THRU WINDOW W/ FLAT BLACK FRAME
15	PRE-FINISHED ALUMINUM SCREEN WALL (FLAT BLACK)
16	PRE-FINISHED ALUMINUM FRAMED AWNING W/ FABIRC COVERING (FLAT BLACK)
17	PRE-FINISHED METAL TRIM (FLAT BLACK)
18	RTU BEHIND SCREEN WALL
WINDOW TESTING REQUIREMENTS:	
1. THE CONTRACTOR SHALL FIELD TEST WINDOW FENESTRATION PRODUCTS USING AN AAMA ACCREDITED INDEPENDENT TESTING AGENCY IN ACCORDANCE WITH AAMA 502.	
2. TEST THE FIRST COMPLETELY INSTALLED UNIT FOR AIR LEAKAGE RESISTANCE AND THEN WATER PENETRATION RESISTANCE AS SPECIFIED BY AAMA 502.	
A. MAKE NECESSARY INSTALLATION CORRECTIONS TO PASS THE TEST, ON THE TEST WINDOWS AND UNITS INSTALLED.	
B. INFORM THE CONTRACTOR AND INSTALLER OF NECESSARY CHANGES FOR PROPER INSTALLATION OF THE UNITS BEFORE PROCEEDING WITH INSTALLATION OF THE REMAINING UNITS.	
3. THE OWNER OR ARCHITECT SHALL IDENTIFY ADDITIONAL FENESTRATION TESTING OF NOT LESS THAN 5% OR THREE WINDOWS, WHICHEVER IS GREATER.	
A. TEST AT LEAST ONE OF EACH TYPE OF WINDOW UNIT.	
B. TEST UNITS FROM AT LEAST TWO DIFFERENT ELEVATIONS.	
C. IN CASE OF FAILURES, THE CONTRACTOR SHALL PROVIDE ADDITIONAL TESTING OF THE FAILED UNIT, PLUS TWO ADDITIONAL FENESTRATIONS.	
D. ALL ADDITIONAL TESTING BECAUSE OF FAILED TESTS SHALL BE AT THE CONTRACTOR'S EXPENSE.	
4. CONDUCT AIR-LEAKAGE RESISTANCE TESTS AT A UNIFORM STATIC TEST PRESSURE PER AAMA 502 REQUIREMENTS.	
5. CONDUCT THE INITIAL WATER PENETRATION RESISTANCE TEST PER AAMA 502 REQUIREMENTS.	

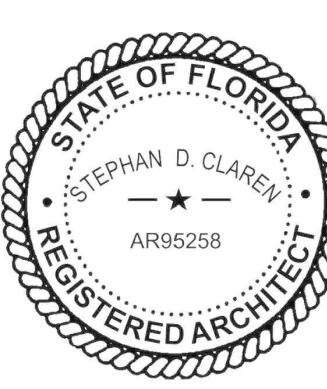


KEY PLAN  
NTS



Claren Architecture + Design, Inc.  
AA26002865  
6400 CONGRESS AVE, SUITE 2150  
BOCA RATON, FL 33487  
561.961.4884  
www.clarenarchitecture.com

New Building For:  
Starbucks  
4920 W Atlantic Ave  
Delray Beach, FL 33445

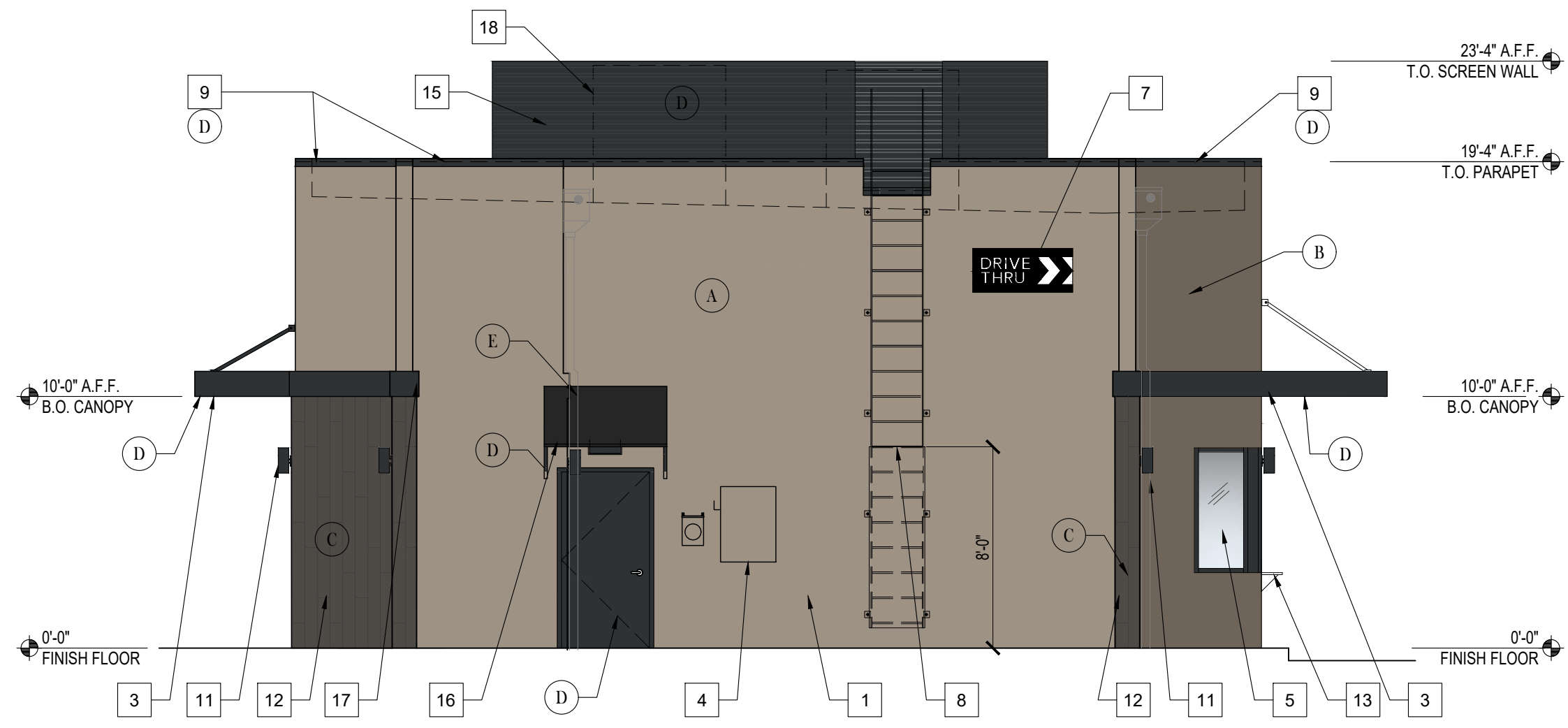


PROJECT #	20-054
DATE	3-11-2021
REV #	DATE
01	A-3
02	A-3
03	A-3
04	A-3
SHEET #	

A-3

COPYRIGHT 2020

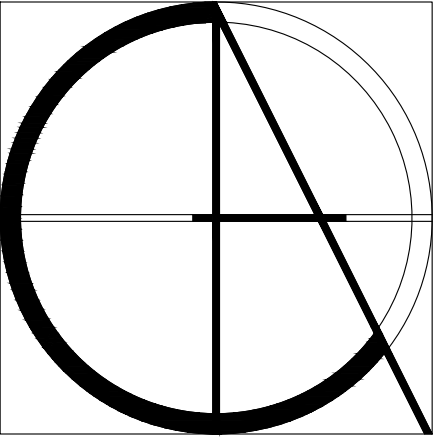
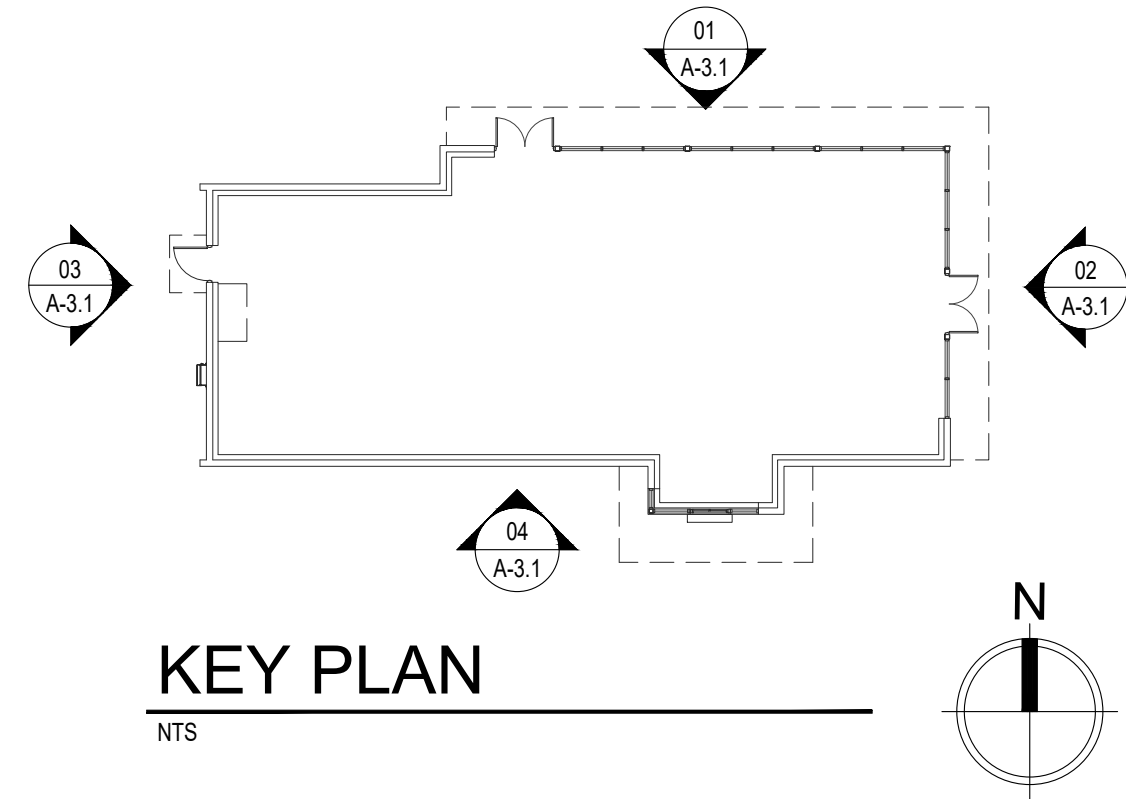




MATERIAL LEGEND	
1	SMOOTH STUCCO FINISH
2	SMOOTH STUCCO FINISH W/ 1/2" REVEALS
3	POWDERCOATED ALUMINUM CANOPY (FLAT BLACK)
4	ELECTRICAL EQUIPMENT. REFER TO ELECTRICAL PLANS
5	IMPACT RATED ANODIZED ALUMINUM STOREFRONT SYSTEM W/ FLAT BLACK FRAME
6	IMPACT RATED PAINTED HOLLOW METAL DOOR/FRAME (FLAT BLACK)
7	STARBUCKS SIGNAGE
8	ROOF ACCESS LADDER W/ LOCKABLE PANEL UP TO 8'-0" PAINTED TO MATCH WALL COLOR
9	PRE-FINISHED ALUMINUM COPING (FLAT BLACK)
10	CONDUCTOR BOX/ DOWNLEADER & OVERFLOW SCUPPER (PAINTED FLAT BLACK)
11	DECORATIVE WALL SCONCES
12	FIBER CEMENT SIDING
13	56"x10"x1" OBSIDIAN PAPERSTONE SHELF W/STAINLESS STEEL BRACKETS AS REQUIRED
14	IMPACT RATED ANODIZED ALUMINUM DRIVE THRU WINDOW W/ FLAT BLACK FRAME
15	PRE-FINISHED ALUMINUM SCREEN WALL (FLAT BLACK)
16	PRE-FINISHED ALUMINUM FRAMED AWNING W/ FABIRC COVERING (FLAT BLACK)
17	PRE-FINISHED METAL TRIM (FLAT BLACK)
18	RTU BEHIND SCREEN WALL
19	SCUPPER IN WEB BEAM

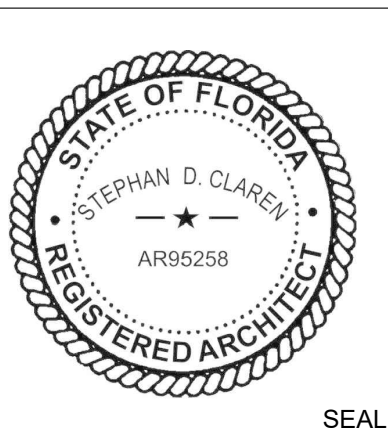
COLOR LEGEND	
(A) STUCCO-1 SW7504 - KEYSTONE GRAY	
(B) STUCCO-2 SW7026 - GRIFFIN	
(C) WA-1 NICHIIHA FIBER CEMENT AWP3030 17-7/8\" x 119- 5/16\" VINTAGE WOOD / BARK (VERTICAL APPLICATION)	
(D) MTL-1, MTL-2, MTL-3, MTL-4 TO MATCH RAL#7021 MATTE. MT0028 \"FLAT BLACK\"	
(E) FB-1 FABRIC AWNING (SUNBRELLA) \"5032 BLACK\"	

NOTE:  
REFER TO LANDLORD DESIGN PACKAGE  
FOR ADDITIONAL INFORMATION.



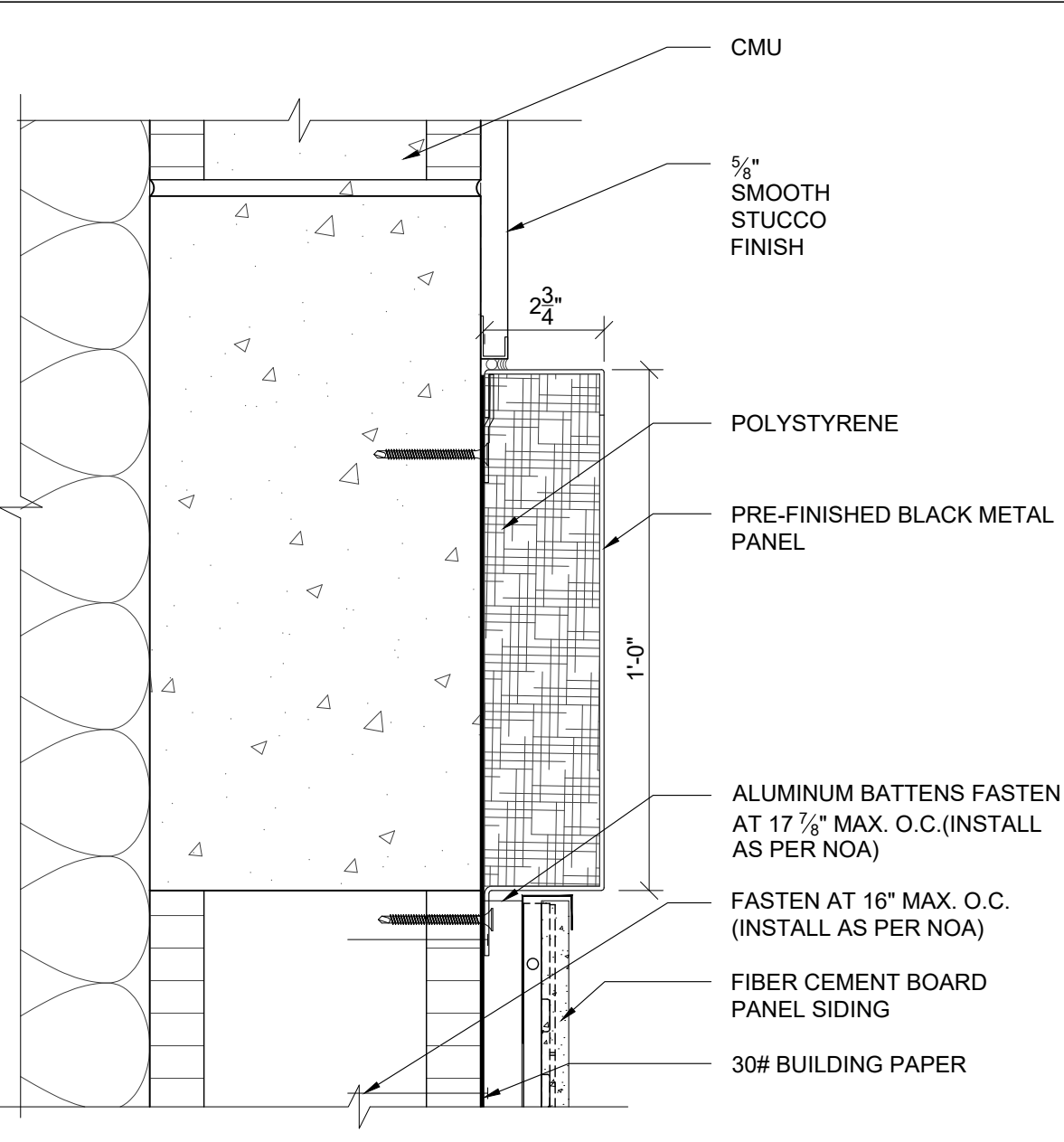
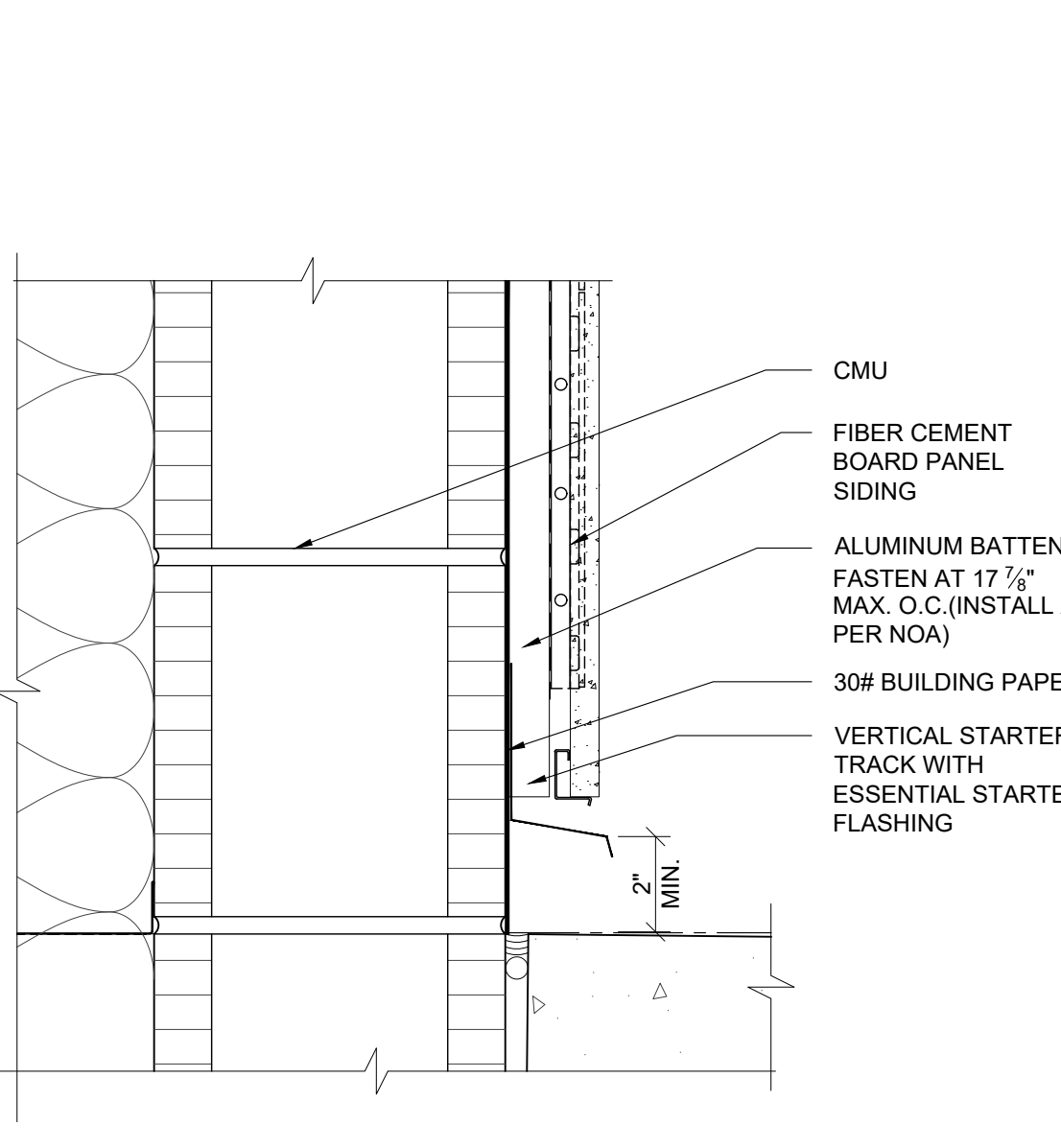
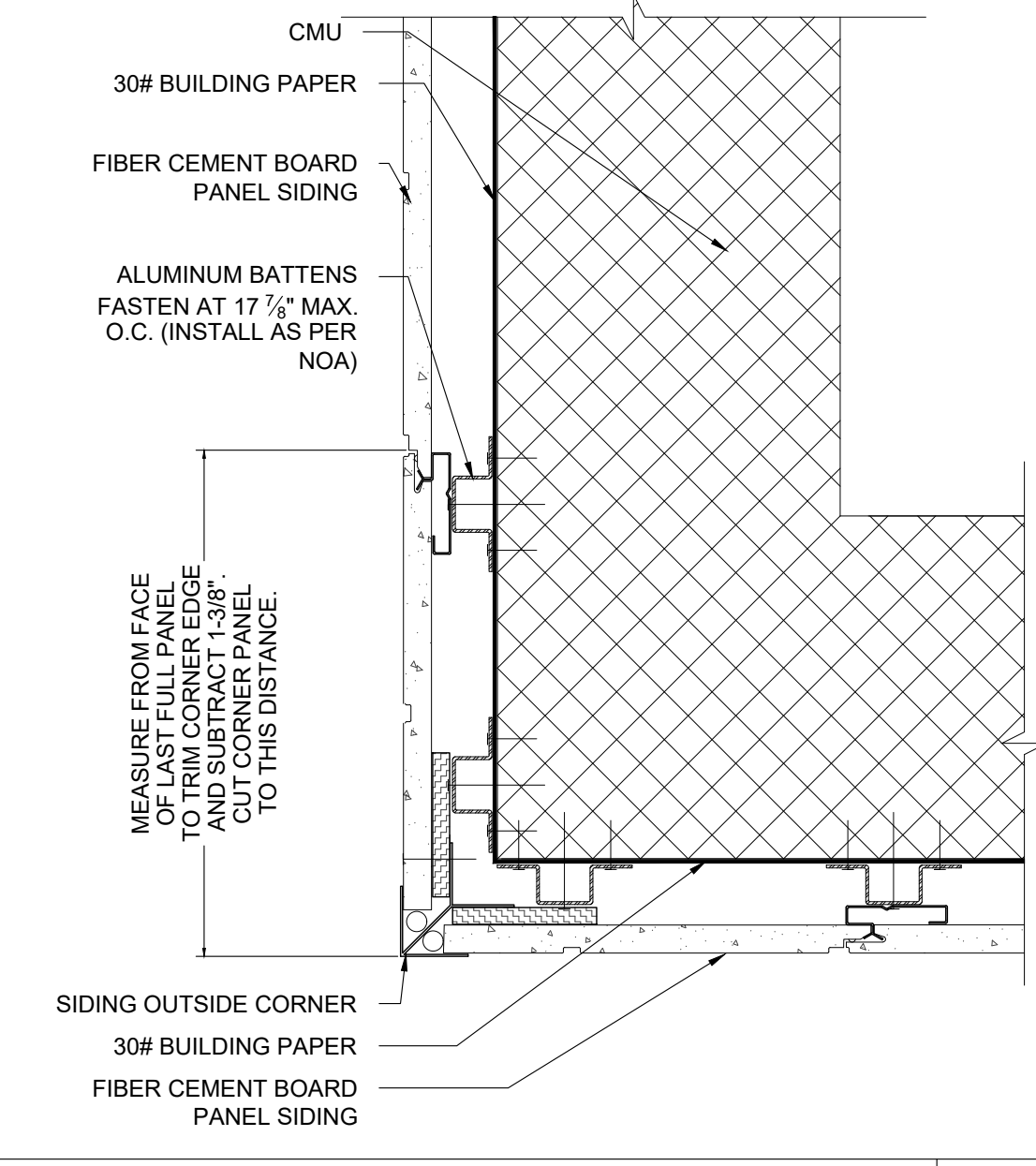
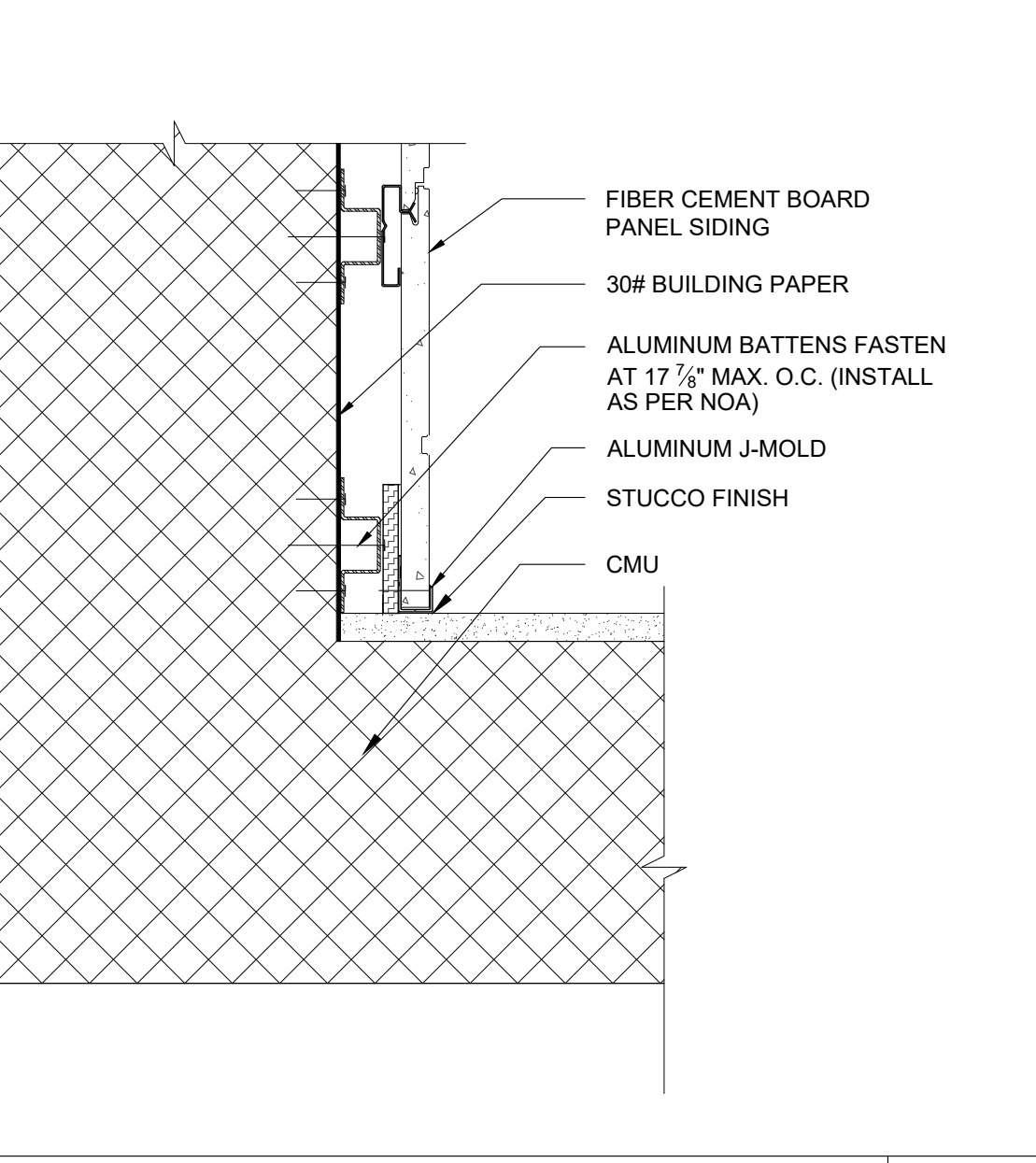
Claren Architecture + Design, Inc.  
AA26002865  
6400 CONGRESS AVE, SUITE 2150  
BOCA RATON, FL 33487  
561.961.4884  
www.clarenarchitecture.com

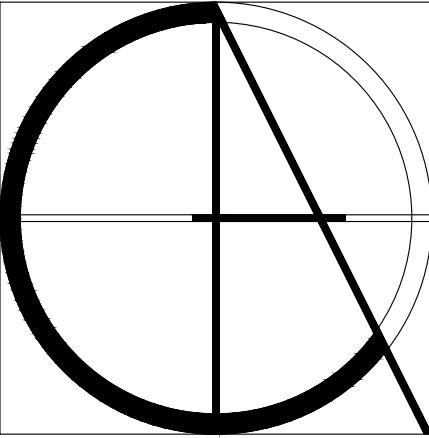
New Building For:  
**Starbucks**  
4920 W Atlantic Ave  
Delray Beach, FL 33445



PROJECT #	20-054
DATE	3-11-2021
REV #	DATE
01	A-3.1
02	A-3.1
03	A-3.1
04	A-3.1
SHEET #	

A-3.1

					
		NOT USED	04	SIDING PANEL TRIM DETAIL	01
			SCALE:		SCALE: 3"=1'-0"
					
PATIO RAILING DETAIL		07	05	SIDING PANEL WINDOW JAMB DETAIL DETAIL	02
		SCALE: N.T.S.	SCALE: 3"=1'-0"		SCALE: 3"=1'-0"
<div>NOTES:</div> <div>1. FIBER CEMENT BOARD PANEL SIDING TO BE INSTALLED PER MANUFACTURERS INSTRUCTIONS. CONTRACTORS ARE RESPONSIBLE FOR SUCCESSFUL APPLICATION. CONSTRUCTION BUILT IN ACCORDANCE WITH BEST PRACTICES.</div> <div>2. ALUMINUM BATTENS SHALL BE AT 17 7/8" O.C.</div>					
			06	SIDING PANEL INSIDE END CORNER DETAIL	03
			SCALE: 3"=1'-0"		SCALE: 3"=1'-0"
					



Claren Architecture + Design, Inc.

AA26002865

6400 CONGRESS AVE, SUITE 2150  
BOCA RATON, FL 33487

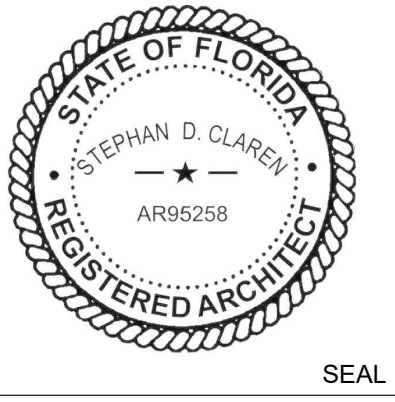
561.961.4884

www.clarenarchitecture.com

New Building For:

Starbucks

4920 W Atlantic Ave  
Delray Beach, FL 33445



PROJECT #		20-054
DATE		3-11-2021
REV #		DATE
△		
△		
△		
△		
△		
SHEET #		

A-3.2