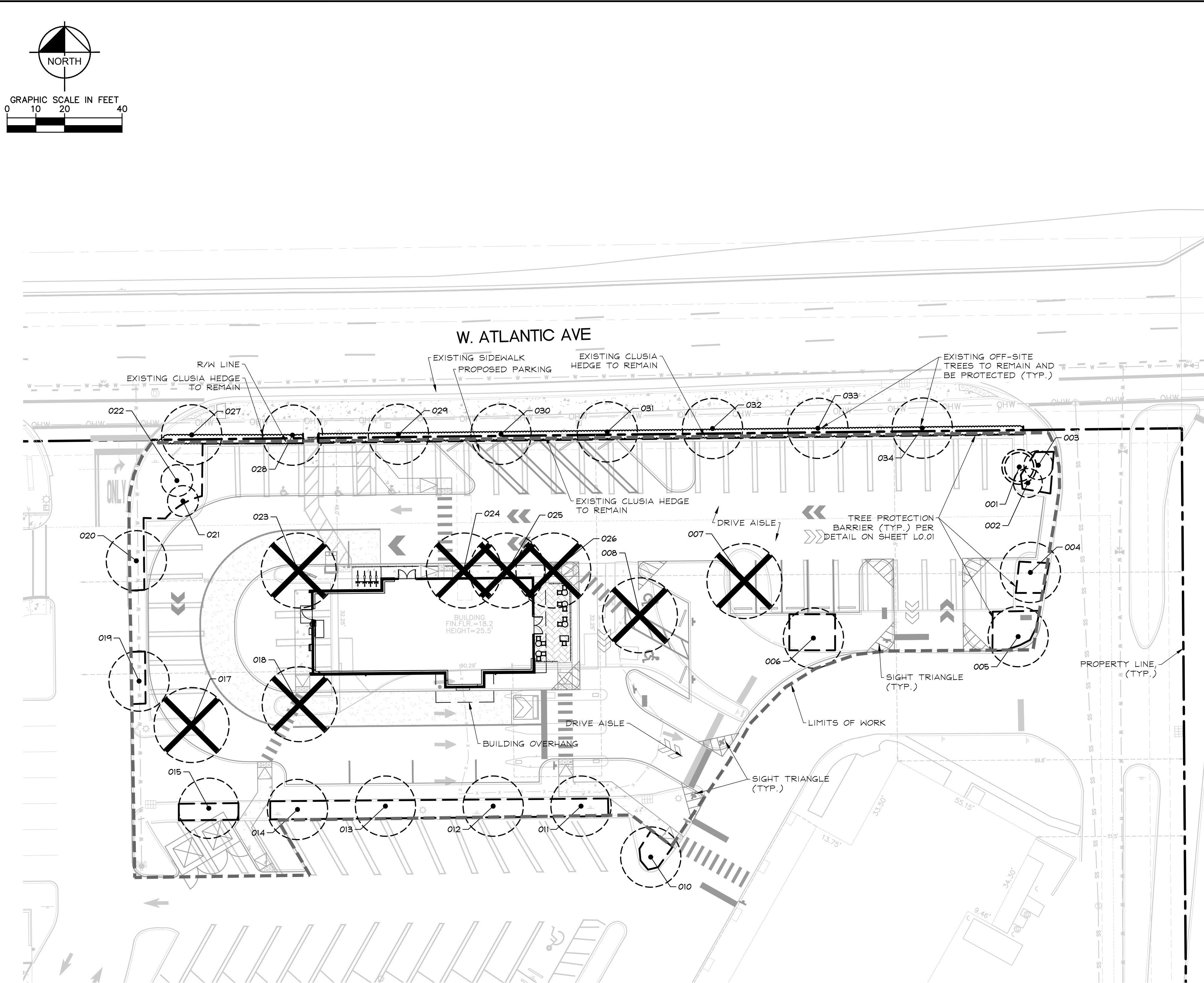


Plotted By: Horgrett, Tom. Sheet Set: BED BATH & BEYOND PLAZA. Layout: L0.00. Tree Disposition Plan. March 16, 2021. 05:14:42pm. K:\bed_civil\140549000 - bbb plaza\CADD\plansheets\L0.00 - Tree Disposition Plan.dwg
This document, together with the concepts and designs presented herein, is intended only for the specific purpose and client for which it was prepared. Reuse of and improper reliance on this document without written authorization and adaptation by Kimley-Horn and Associates, Inc. shall be without liability to Kimley-Horn and Associates, Inc.



KEY:

	TREE TO REMAIN
	TREE TO BE REMOVED
	TREE TO BE RELOCATED
	TREE TO BE PROTECTED PER DETAIL ON SHEET L0.01

TREE DISPOSITION SUMMARY:

TOTAL TREES PROTECTED	19
TOTAL TREES REMOVED	8
TOTAL TREES RELOCATED	0
TOTAL INCHES REMOVED	117"
TOTAL INCHES PROPOSED	98"
TOTAL INCHES DEFICIT	19"
TOTAL PALMS PROTECTED	04
TOTAL PALMS REMOVED	00
TOTAL PALMS RELOCATED	01

THIS ITEM HAS BEEN ELECTRONICALLY SIGNED AND SEALED BY TRICIA C. RICHTER, P.L.A., ON 3/16/21 USING A SHA-1 AUTHENTICATION CODE.
PRINTED COPIES OF THIS DOCUMENT ARE NOT CONSIDERED SIGNED AND SEALED AND THE SHA-1 CODE MUST BE VERIFIED ON ANY ELECTRONIC COPIES.

VERTICAL DATUM
ELEVATIONS SHOWN HEREON ARE BASED ON THE NORTH AMERICAN VERTICAL DATUM OF 1988.
NAVD '88 ELEV + 1.506' = NGVD '29 ELEVATION

CALL 2 WORKING DAYS BEFORE YOU DIG

IT'S THE LAW!
DIAL 811

Know what's below.
Call before you dig.

SUNSHINE STATE ONE CALL OF FLORIDA, INC.

BED BATH & BEYOND PLAZA PREPARED FOR BBB PLAZA ASSOCIATES LTD.	TREE DISPOSITION PLAN	KHA PROJECT 140549000 DATE FEB 2021 SCALE AS SHOWN DESIGNED BY TR DRAWN BY JC CHECKED BY TR	LICENSED PROFESSIONAL TRICIA C. RICHTER, P.L.A. FL LICENSE NUMBER LA#6667244	Kimley»Horn © 2021 KIMLEY-HORN AND ASSOCIATES, INC. 1815 S. CONGRESS AVE., SUITE 200, BOCA RATON, FL 33445 PHONE: 561-330-2345 FAX: 561-363-8175 WWW.KIMLEY-HORN.COM CA 00000696	No.	REVISIONS	DATE	BY

TREE DISPOSITION		BOTANICAL NAME	DBH	HT	CONDITION	DISPOSITION	MITIGATION
COMMON NAME							
1.	SABAL PALM	SABAL PALMETTO		12' CT	90%	RELOCATE	
2.	SABAL PALM	SABAL PALMETTO		12' CT	90%	REMAIN	
3.	SABAL PALM	SABAL PALMETTO		15' CT	90%	REMAIN	
4.	LIVE OAK	QUERCUS VIRGINIANA	13"	25'	70%	REMAIN	
5.	LIVE OAK	QUERCUS VIRGINIANA	16"	25'	80%	REMAIN	
6.	LIVE OAK	QUERCUS VIRGINIANA	17"	28'	85%	REMAIN	
7.	LIVE OAK	QUERCUS VIRGINIANA	15"	25'	75%	REMOVE	ON-SITE
8.	BRAZILIAN BEAUTYLEAF	CALOPHYLLUM BRASILIENSE	18"	25'	75%	REMOVE	ON-SITE
10.	PINK TRUMPET	TABEBUIA HETEROPHYLLA	8"	20'	65%	REMAIN	
11.	LIVE OAK	QUERCUS VIRGINIANA	18"	30'	80%	REMAIN	
12.	LIVE OAK	QUERCUS VIRGINIANA	14"	25'	75%	REMAIN	
13.	LIVE OAK	QUERCUS VIRGINIANA	12"	28'	75%	REMAIN	
14.	LIVE OAK	QUERCUS VIRGINIANA	19"	25'	80%	REMAIN	
15.	LIVE OAK	QUERCUS VIRGINIANA	12"	24'	80%	REMAIN	
17.	LIVE OAK	QUERCUS VIRGINIANA	10"	24'	70%	REMAIN	
18.	LIVE OAK	QUERCUS VIRGINIANA	12"	24'	70%	REMAIN	
19.	LIVE OAK	QUERCUS VIRGINIANA	10"	22'	70%	REMOVE	ON-SITE
20.	LIVE OAK	QUERCUS VIRGINIANA	11"	22'	70%	REMOVE	ON-SITE
21.	SABAL PALM	SABAL PALMETTO		22' CT	80%	REMAIN	
22.	SABAL PALM	SABAL PALMETTO		18' CT	85%	REMAIN	
23.	LIVE OAK	QUERCUS VIRGINIANA	17"	25'	75%	REMOVE	ON-SITE
24.	MAHOGANY	SWIETENIA MAHAGONI	18"	40'	50%	REMOVE	ON-SITE
25.	MAHOGANY	SWIETENIA MAHAGONI	19"	40'	40%	REMOVE	TREE FUND
26.	MAHOGANY	SWIETENIA MAHAGONI	9"	35'	40%	REMOVE	ON-SITE
27.	LIVE OAK	QUERCUS VIRGINIANA	22"	35'	45%	REMAIN	OFF-SITE
28.	MAHOGANY	SWIETENIA MAHAGONI	18"	35'	64%	REMAIN	OFF-SITE
29.	MAHOGANY	SWIETENIA MAHAGONI	16"	30'	50%	REMAIN	OFF-SITE
30.	MAHOGANY	SWIETENIA MAHAGONI	29"	40'	80%	REMAIN	OFF-SITE
31.	MAHOGANY	SWIETENIA MAHAGONI	13"	30'	40%	REMAIN	OFF-SITE
32.	MAHOGANY	SWIETENIA MAHAGONI	22"	35'	75%	REMAIN	OFF-SITE
33.	MAHOGANY	SWIETENIA MAHAGONI	23"	35'	80%	REMAIN	OFF-SITE
34.	MAHOGANY	SWIETENIA MAHAGONI	20"	35'	70%	REMAIN	OFF-SITE

TREE FUND INCHES:	
TOTAL INCHES REMOVED	117"
TOTAL INCHES MITIGATED ON SITE	98"
TOTAL INCHES NOT REQUIRED FOR MITIGATION 0" (CONDITION BELOW 25%)	
TOTAL TREE FUND INCHES	19"

DBH REMOVED 0-8"	8"
DBH REMOVED 9-12"	4"
DBH REMOVED 13-18"	6"
DBH REMOVED 19+ "	1"
TOTAL TREE FUND INCHES	19"

TREE FUND MITIGATION:	
DBH MITIGATION 0-8" 8" @ \$450 = \$3,600	\$3,600
DBH MITIGATION 9-12" 4" @ \$650 = \$2,600	\$2,600
DBH MITIGATION 13-18" 6" @ \$850 = \$2,550	\$5,100
DBH MITIGATION 19+ " 1" @ \$1000 = \$1,000	\$1,000
TREE FUND MITIGATION REDUCTION (\$12,300 * 50%) = \$6,150 FOR TREES WITH CONDITION OF 50% OR LESS	-\$6,150
TOTAL TREE FUND MITIGATION	\$6,150

EXISTING TREE - PRUNING NOTES:

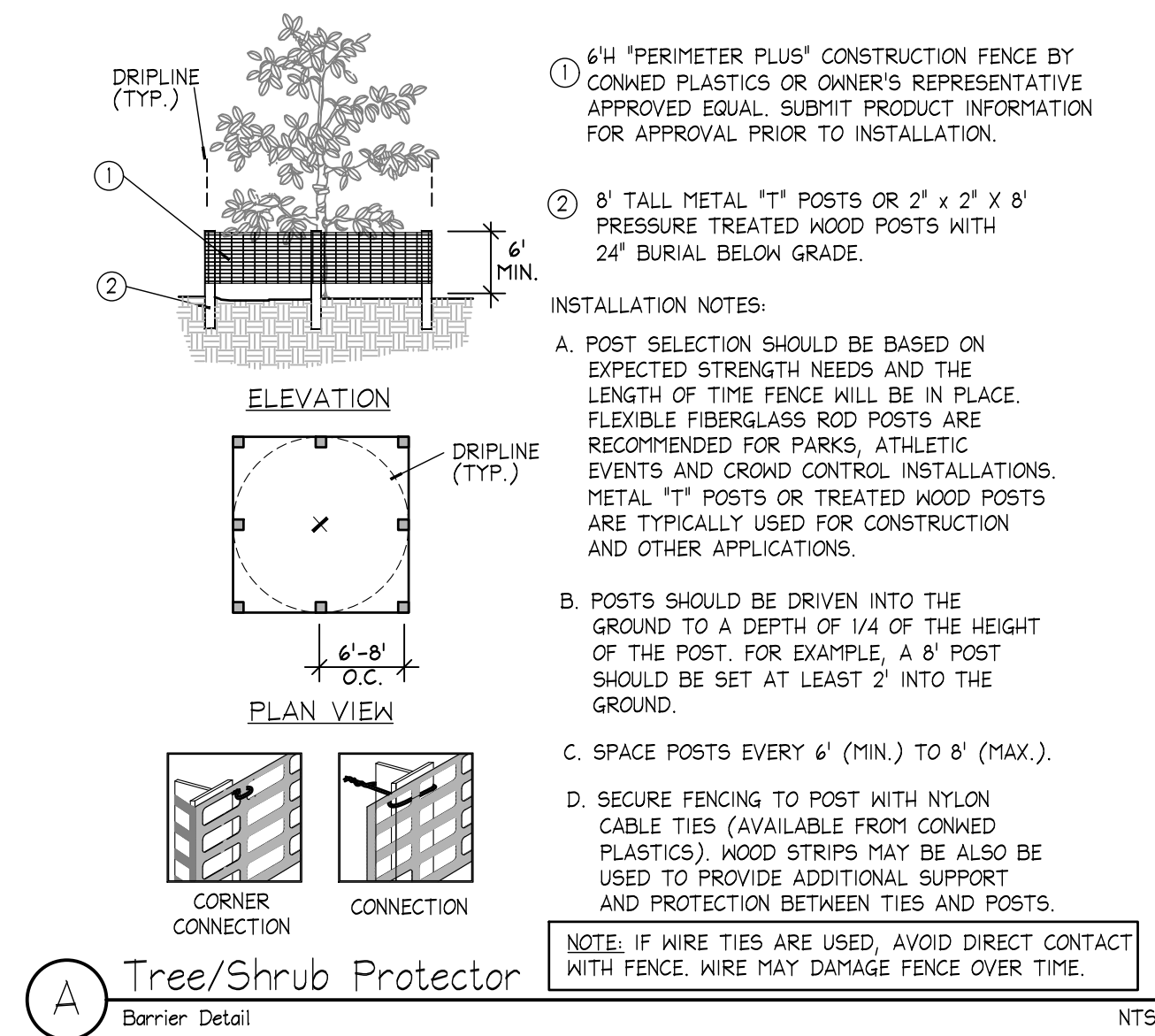
1. TREE PRUNING WORK MUST BE PERFORMED BY OR DIRECTLY SUPERVISED BY AN ISA CERTIFIED ARBORIST.
2. CONTRACTOR SHALL HOLD A PRE-PRUNING CONFERENCE WITH THE OWNER AND LANDSCAPE ARCHITECT PRIOR TO COMMENCING PRUNING OPERATIONS.
3. PRUNE TREES PER ANSI A300 FOR THE FOLLOWING:
 - 3.1. MAINTENANCE - TO MAINTAIN OR IMPROVE THE TREE'S HEALTH AND STRUCTURE
 - 3.2. HAZARD REDUCTION - TO REMOVE DEAD LIMBS OR OTHER VISIBLE HAZARDS FROM THE TREE CANOPY

TREE/PALM RELOCATION

1. Trees shall be relocated once from their present location to a designated location per the direction of the Project Engineer who shall determine the exact location for each relocated tree and/or palm. Relocation activities will include planting on slopes and/or level grade.
2. An ISA - Certified Arborist or a Certified Landscape Contractor certified by the Florida Nurserymen and Growers Association shall perform and monitor all tree root pruning and relocation activities.
3. Landscape Specifications provided in this construction set shall apply to all relocated trees and/or palms.
4. Contractor shall stake and guy all trees at the time of relocation as per details provided in this construction set. Contractor shall be responsible for the maintenance and/or repair of staking and guying during the warranty period. All trees and/or palms shall be braced at least one (1) year or as directed by the Owner's Representative.
5. Soil backfill for the installation of trees, palms, shrubs, and ground covers shall be uniform mix of 25% well-rotted compost, 25% topsoil, and 50% clean, weed-free loosened native soil backfill.
6. Contractor shall submit manufacturers certified analysis for soil amendments to the Owner's Representative.
7. Contractor shall pay to have the backfill lab tested if requested by the Owner's Representative. Non-soluble wetting agent shall be added to the backfill per the manufacturer's specifications.

ROOT PRUNING

1. The Landscape Architect has observed trees that could be impacted by construction of the proposed improvements.
2. If construction activities occur within the dripline (or the horizontal extent of the canopy) of a tree, then that tree is a candidate for root pruning.
3. Root pruning must occur prior to trenching operations to insure that the roots are cut clean and at proper angles and not mechanically ripped from the earth during construction.
4. For trees requiring root pruning, a tree assessment shall be conducted and a root-pruning plan shall be developed by a Certified Arborist or Consulting Arborist. This plan should identify:
 - Maximum allowable size of roots to be cut
 - Allowable proximity to the trunk for cuts
 - Time of year when root cutting is allowable
(Note: In Florida, it is best to avoid root pruning during times of the May through September, when the potential for damaging wind loads on trees are greatest.)
 - Method for making cuts
 - Mitigating canopy pruning
 - Type and extent of necessary structural support
 - Schedule for watering/fertilization after pruning
5. Implement the root pruning plan per the Arborist's recommendation.



VERTICAL DATUM
ELEVATIONS SHOWN HEREON ARE BASED ON THE
NORTH AMERICAN VERTICAL DATUM OF 1988.
NAVD '88 ELEV + 1.506' = NGVD '29 ELEVATION

THIS ITEM HAS BEEN ELECTRONICALLY SIGNED
AND SEALED BY TRICIA C. RICHTER, PLA, ON
3/16/21 USING A SHA-1 AUTHENTICATION
CODE.



PRINTED COPIES OF THIS DOCUMENT ARE NOT
CONSIDERED SIGNED AND SEALED AND THE
SHA-1 CODE MUST BE VERIFIED ON ANY
ELECTRONIC COPIES.


CALL 2 WORKING DAYS
BEFORE YOU DIG

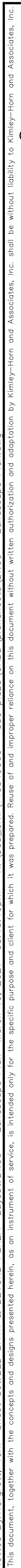
IT'S THE LAW!
DIAL 811

**Know what's below.
Call before you dig**

SUNSHINE STATE ONE CALL OF FLORIDA, INC.

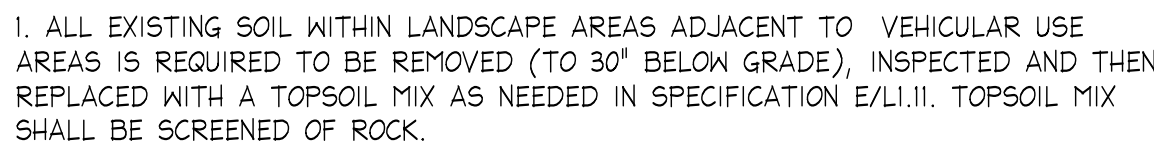


SHEET NUMBER L0.01	BED BATH & BEYOND PLAZA PREPARED FOR BBB PLAZA ASSOCIATES LTD. DELRAY BEACH	TREE DISPOSITION PLAN	KHA PROJECT 140549000	LICENSED PROFESSIONAL	 Kimley»»Horn © 2021 KIMLEY-HORN AND ASSOCIATES, INC. 1615 S CONGRESS AVE, SUITE 201, DELRAY BEACH, FL 33445 PHONE: 561-363-1500 FAX: 561-363-1575 WWW.KIMLEY-HORN.COM CA 00300666	No.	REVISIONS	DATE	BY
			DATE FEB '2021	TRICIA C RICHTER, PLA					
			SCALE AS SHOWN DESIGNED BY TR DRAWN BY JC CHECKED BY TR	FL LICENSE NUMBER LA#6667244		DATE: 03/16/21			

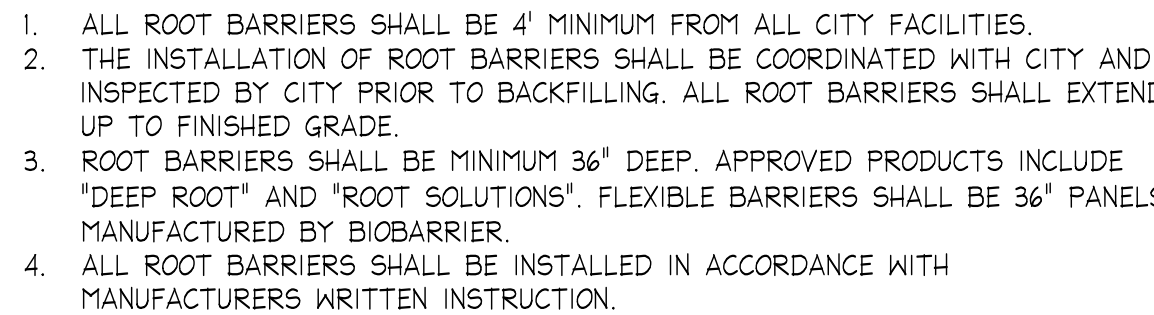


TREES	BOTANICAL NAME	COMMON NAME	CONT	CAL	SIZE	NATIVE	QTY
BS	Bursera simaruba 8' CT	Gumbo Limbo	Cont.	5" Cal.	16' HT x 7' SPR	Yes	3
LJ	Ligustrum japonicum Min. 5 Stem. 4" Cal.	Japanese Privet	Cont.	MULTI	10'HT x 8'SPR	No	4
LT	Lagerstroemia indica 'Tuscarora' Min. 5 Stems. 4" Cal. 8' CT	Grape Myrtle	Cont.	MULTI	16' HT x 7' SPR	No	3
QV	Quercus virginiana 8' CT	Southern Live Oak	Cont.	5" Cal.	16' HT x 7' SPR	Yes	11
SR	Sabal palmetto	Cabbage Palmetto	Relocated			Yes	1
SHRUBS	BOTANICAL NAME	COMMON NAME	CONT	O.C.	SIZE	NATIVE	QTY
CG	Clusia guttifer nana	Dwarf Clusia	Cont.	18" O.C.	12"x12"	Yes	20
CR	Chrysobalanus icaco 'Red Tip'	Red Tip Cocoplum	Cont.	24" O.C.	24"x24"	Yes	244
CS	Clusia guttifer	Small Leaf Clusia	Cont.	24" O.C.	24"x24"	Yes	10
CV	Codiaeum variegatum 3 PPP	Croton	Cont.	18" OC	12"x12"	No	16
PM	Podocarpus macrophyllus Full to Base	Podocarpus	Cont.	24" O.C.	36"x24"	No	22
GROUND COVERS	BOTANICAL NAME	COMMON NAME	CONT	O.C.	SIZE	NATIVE	QTY
AG	Arachis glabrata	Perennial Peanut	Cont.	12" O.C.	12"x12"	No	172
CF	Cyrtomium falcatum	Holly Fern	Cont.	24" O.C.	15"x15"	No	100
FG	Ficus microcarpa 'Green Island'	Green Island Ficus	Cont.	18" O.C.	15"x15"	No	84
IN	Ilex vomitoria 'Nana'	Dwarf Yaupon Holly	Cont.	18" O.C.	12"x12"	Yes	591
JP	Juniperus chinensis 'Parsonii'	Parson Juniper	Cont.	18"O.C.	12"x12"	Yes	64
SOD	Stenotaphrum secundatum 'Floratum'	Floratum St. Augustine Grass	Sod			No	± 6,325 sq

1. CONTRACTOR SHALL REFER TO THE LANDSCAPE PLANTING DETAILS, PLANT LIST, GENERAL NOTES AND ALL CONTRACT DOCUMENTS FOR FURTHER AND COMPLETE INSTRUCTIONS.
2. PLANT LIST QUANTITIES ARE PROVIDED FOR CONVENIENCE IN THE EVENT OF QUANTITY DISCREPANCIES THE DRAWING SHALL TAKE PRECEDENCE. ANY DISCREPANCIES SHALL BE BROUGHT TO THE ATTENTION OF THE LANDSCAPE ARCHITECT PRIOR TO BIDDING.
3. PLANT SIZES LISTED ARE THE MINIMUM SIZE THAT WILL BE ACCEPTED FOR THAT PLANT.
4. ANY SUBSTITUTION IN SIZE AND/OR PLANT MATERIAL MUST BE APPROVED BY THE LANDSCAPE ARCHITECT IN WRITING. ALL PLANTS WILL BE SUBJECT TO APPROVAL BY LANDSCAPE ARCHITECT AND/OR OWNERS REPRESENTATIVE BEFORE PLANTING CAN BEGIN.
5. CONTRACTOR SHALL FIELD ADJUST LOCATION OF PLANT MATERIAL AS NECESSARY TO AVOID DAMAGE TO EXISTING UNDERGROUND UTILITIES AND/OR INTERFERE WITH EXISTING ABOVE GROUND ELEMENTS. ALL CHANGES REQUIRED SHALL BE COMPLETED AT THE CONTRACTOR'S EXPENSE AND SHALL BE COORDINATED WITH THE OWNER'S REPRESENTATIVE AND THE LANDSCAPE ARCHITECT.
6. THE CONTRACTOR SHALL BEAR ALL COSTS OF TESTING OF SOILS, AMENDMENTS, ETC. ASSOCIATED WITH THE WORK AND INCLUDED IN THE SPECIFICATIONS.
7. CONTRACTOR SHALL FAMILIARIZE HIM/HERSELF WITH THE LIMITS OF WORK AND EXISTING CONDITIONS AND VERIFY ALL INFORMATION. IF DISCREPANCIES EXIST, CONTRACTOR SHALL NOTIFY OWNERS REPRESENTATIVE IN WRITING WITHIN SEVEN CALENDAR DAYS OF NOTICE TO PROCEED.
8. ALL NEW AND TRANSPLANTED PLANT MATERIAL SHALL BE IRRIGATED BY AN AUTOMATIC UNDERGROUND IRRIGATION SYSTEM. ALL SYSTEMS SHALL BE DESIGNED TO ALLOW 1" PER HOUR TO-HEAD COVERAGE (ONE HUNDRED (100) PERCENT COVERAGE WITH ONE HUNDRED (100) PERCENT OVERLAP.



NTS



NTS



NTS

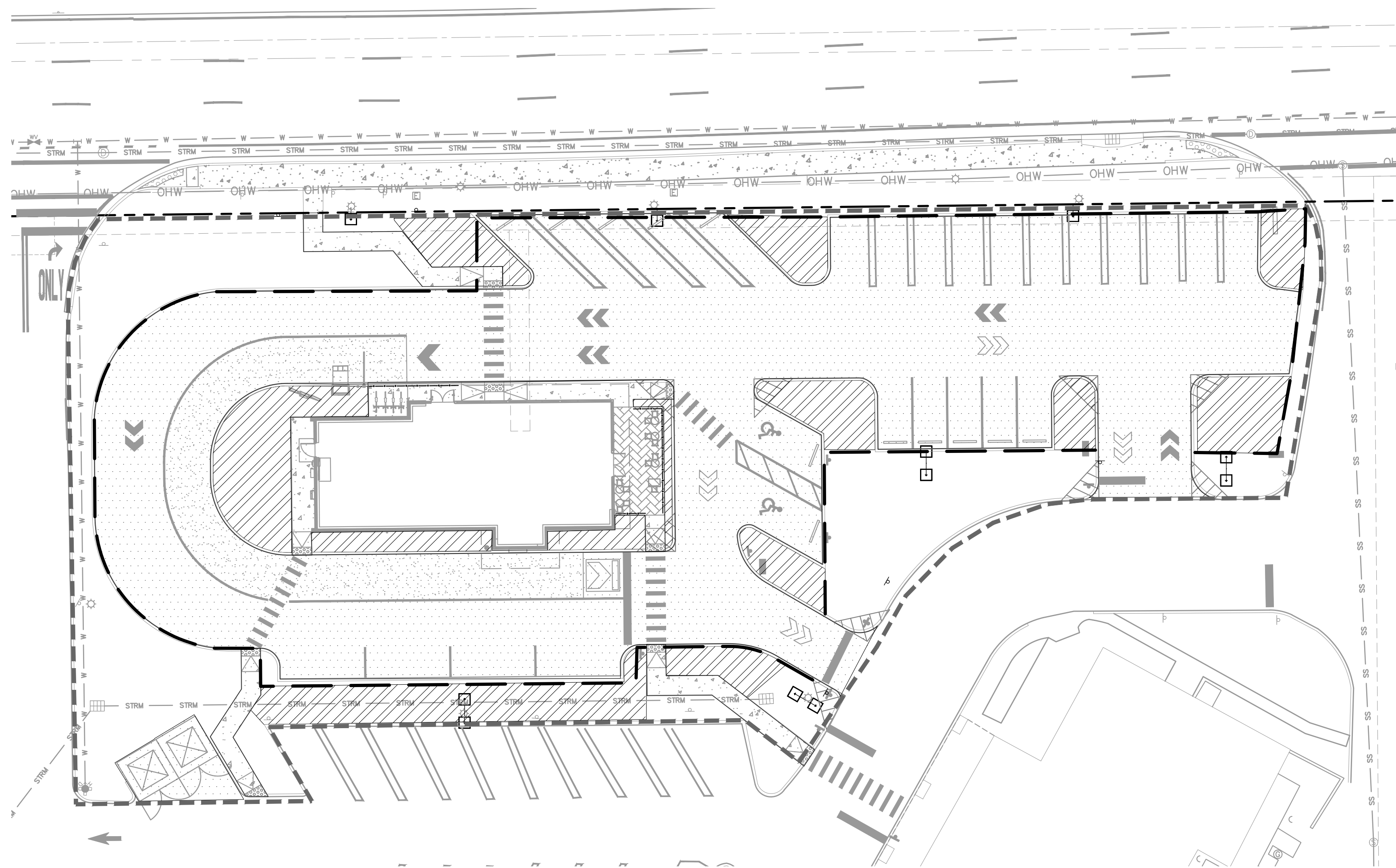
VERTICAL DATUM
ELEVATIONS SHOWN HEREON ARE BASED ON THE
NORTH AMERICAN VERTICAL DATUM OF 1988.
NAVD '88 ELEV + 1.506' = NGVD '29 ELEVATION

811
Know what's below.
Call before you dig

SUNSHINE STATE ONE CALL OF FLORIDA, INC.

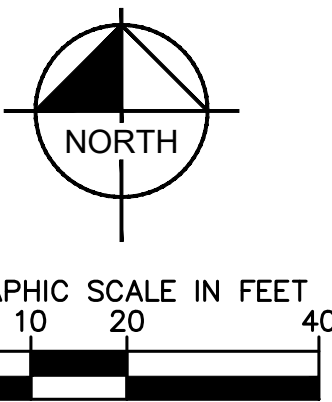
SHEET NUMBER		L1.00	
BED BATH & BEYOND PLAZA		PREPARED FOR BBB PLAZA ASSOCIATES LTD.	
DELRAY BEACH		FL	
LANDSCAPE PLAN		KHA PROJECT 140549000	
SCALE AS SHOWN		DATE FEB 2021	
DESIGNED BY TR		TRICIA C RICHTER, PLA	
DRAWN BY JC		FL LICENSE NUMBER LA#6667244	
CHECKED BY TR		DATE: 03/16/21	
LIMLEY & ASSOCIATES, INC.		LIMLEY & ASSOCIATES, INC.	
1615 S CONGRESS AVE, SUITE 201, DELRAY BEACH, FL 33445		1615 S CONGRESS AVE, SUITE 201, DELRAY BEACH, FL 33445	
PH: 561.276.1100 FAX: 561.276.1101		PH: 561.276.1100 FAX: 561.276.1101	
WWW.LIMLEY-HORN.COM		WWW.LIMLEY-HORN.COM	
CA 0000666		CA 0000666	
No.		REVISIONS	
DATE		BY	

Plotted By: Horgrett, Tom. Sheet Set: BED BATH & BEYOND PLAZA. Layout: L1.01. Landscape Plan. March 16, 2021. 05:15:22pm. K:\bbs-plaza\CADD\plans\sheet\1.01 - Landscape Plan.dwg
This document, together with the concepts and designs presented herein, is intended only for the specific purpose and client for which it was prepared. Reuse of and improper reliance on this document without written authorization and adaptation by Kimley-Horn and Associates, Inc. shall be without liability to Kimley-Horn and Associates, Inc.



KEY:

- VEHICULAR USE AREA
20,410 SF
- INTERIOR LANDSCAPE AREA
4,114 SF
- PARKING AND VEHICULAR
USE PERIMETER
799 LF



EXISTING TREE CALCULATION:	
NUMBER OF TREES TO BE PRESERVED:	19 TREES
NUMBER OF PALMS TO BE PRESERVED:	
3 SABAL PALMS @ 3:1 = 1 TREES	1 TREES
NUMBER OF PALMS TO BE RELOCATED:	1 TREES
1 SABAL PALMS @ 3:1 = 1 TREES	
TOTAL NUMBER OF EXISTING TREES:	21 TREES

PROPOSED TREE CALCULATION:	
TOTAL NUMBER OF EXISTING TREES (SEE EXISTING TREE CALCULATIONS)	21 TREES
TOTAL NUMBER OF PROPOSED TREES	21 TREES
3 GUMBO LIMBO	
3 JAPANESE PRIVET	
4 CRAPE MYRTLE	
11 LIVE OAKS	
TOTAL NUMBER OF PROPOSED PALMS	0 TREES
0 SABAL PALMS @ 3:1 = 0 TREES	
TOTAL NUMBER OF PROPOSED TREES	21 TREES
TOTAL TREES ON SITE	42 TREES

NATIVE TREE CALCULATION:	
NUMBER OF EXISTING NATIVE TREES TO BE PRESERVED:	19 TREES
NUMBER OF EXISTING NATIVE PALMS TO BE PRESERVED:	1 TREES
3 SABAL PALMS @ 3:1 = 1 TREES	
NUMBER OF EXISTING NATIVE PALMS TO BE RELOCATED:	1 TREES
1 SABAL PALMS @ 3:1 = 1 TREES	
TOTAL NUMBER OF EXISTING NATIVE TREES	21 TREES
NUMBER OF PROPOSED NATIVE TREES	14 TREES
3 GUMBO LIMBO = 4 TREES	
11 LIVE OAKS = 11 TREES	
TOTAL NUMBER OF PROPOSED NATIVE TREES	14 TREES
TOTAL NUMBER OF NATIVE TREES ON SITE	35 TREES

CITY OF DELRAY BEACH CODE REQUIREMENTS: * ALL CALCULATIONS BASED ON PARCEL LIMITS.	
A. TOTAL LOT AREA (AFFECTED AREA):	37,420 SF
B. TOTAL STRUCTURES, PARKING, WALKWAYS, DRIVES, ETC.	24,860 SF
C. TOTAL PERVIOUS LOT AREA: C = 37,420 SF - 24,760 SF	12,560 SF
D. AREA OF SHRUBS AND GROUND COVER REQUIRED: D = 12,560 SF * .30	3,768 SF
E. AREA OF SHRUBS AND GROUND COVERS PROVIDED:	9,960 SF
F. NATIVE VEGETATION REQUIRED: F = 3,768 SF * .25	942 SF
G. NATIVE VEGETATION PROVIDED:	2,596 SF
H. TOTAL PAVED VEHICULAR USE AREA:	20,410 SF
I. TOTAL INTERIOR LANDSCAPE AREA REQUIRED: I = 20,410 * .10	2,040 SF
J. TOTAL INTERIOR LANDSCAPE AREA PROVIDED:	4,714 SF
K. TOTAL INTERIOR SHADE TREES REQUIRED: K = 2,040 / 125 SF	17 TREES
L. TOTAL INTERIOR SHADE TREES PROVIDED:	19 TREES
M. TOTAL LINEAR FEET SURROUNDING PARKING OR VEHICULAR USE AREAS:	799 LF
N. TOTAL NUMBER OF PERIMETER TREES REQUIRED: N = 799 LF / 30	27 TREES
O. TOTAL NUMBER OF PERIMETER TREES PROVIDED:	20 TREES
P. TOTAL NUMBER OF EXISTING TREES TO BE PRESERVED:	19 TREES
Q. TOTAL NUMBER OF NATIVE TREES REQUIRED: Q = 19 + 17 + 27 * .50	32 TREES
R. TOTAL NUMBER OF NATIVE TREES PROVIDED:	32 TREES
S. TOTAL NUMBER OF TREES ON PLAN PROVIDED:	40 TREES

THIS ITEM HAS BEEN ELECTRONICALLY SIGNED
AND SEALED BY TRICIA C. RICHTER, P.L.A., ON
3/16/21 USING A SHA-1 AUTHENTICATION
CODE.
PRINTED COPIES OF THIS DOCUMENT ARE NOT
CONSIDERED SIGNED AND SEALED AND THE
SHA-1 CODE MUST BE VERIFIED ON ANY
ELECTRONIC COPIES.

VERTICAL DATUM
ELEVATIONS SHOWN HEREON ARE BASED ON THE
NORTH AMERICAN VERTICAL DATUM OF 1988.
NAVD '88 ELEV + 1.506' = NGVD '29 ELEVATION

CALL 2 WORKING DAYS
BEFORE YOU DIG
IT'S THE LAW!
DIAL 811
Know what's below.
Call before you dig.
SUNSHINE STATE ONE CALL OF FLORIDA, INC.

LANDSCAPE PLAN

BED BATH &
BEYOND PLAZA
PREPARED FOR
BBB PLAZA
ASSOCIATES LTD.

SHEET NUMBER
L1.01

Kimley»Horn
© 2021 KIMLEY-HORN AND ASSOCIATES, INC.
1815 S. OCEAN BLVD., SUITE 200, DELRAY BEACH, FL 33445
PHONE: 561-330-2345 FAX: 561-863-8175
WWW.KIMLEY-HORN.COM CA 00000696

LICENSED PROFESSIONAL
TRICIA C. RICHTER, P.L.A.
KHA PROJECT
140549000
DATE
FEB. 2021
SCALE AS SHOWN
DESIGNED BY TR
DRAWN BY JC
CHECKED BY TR
DATE 03/16/21
FL LICENSE NUMBER
LA#6667244

DELRAY BEACH

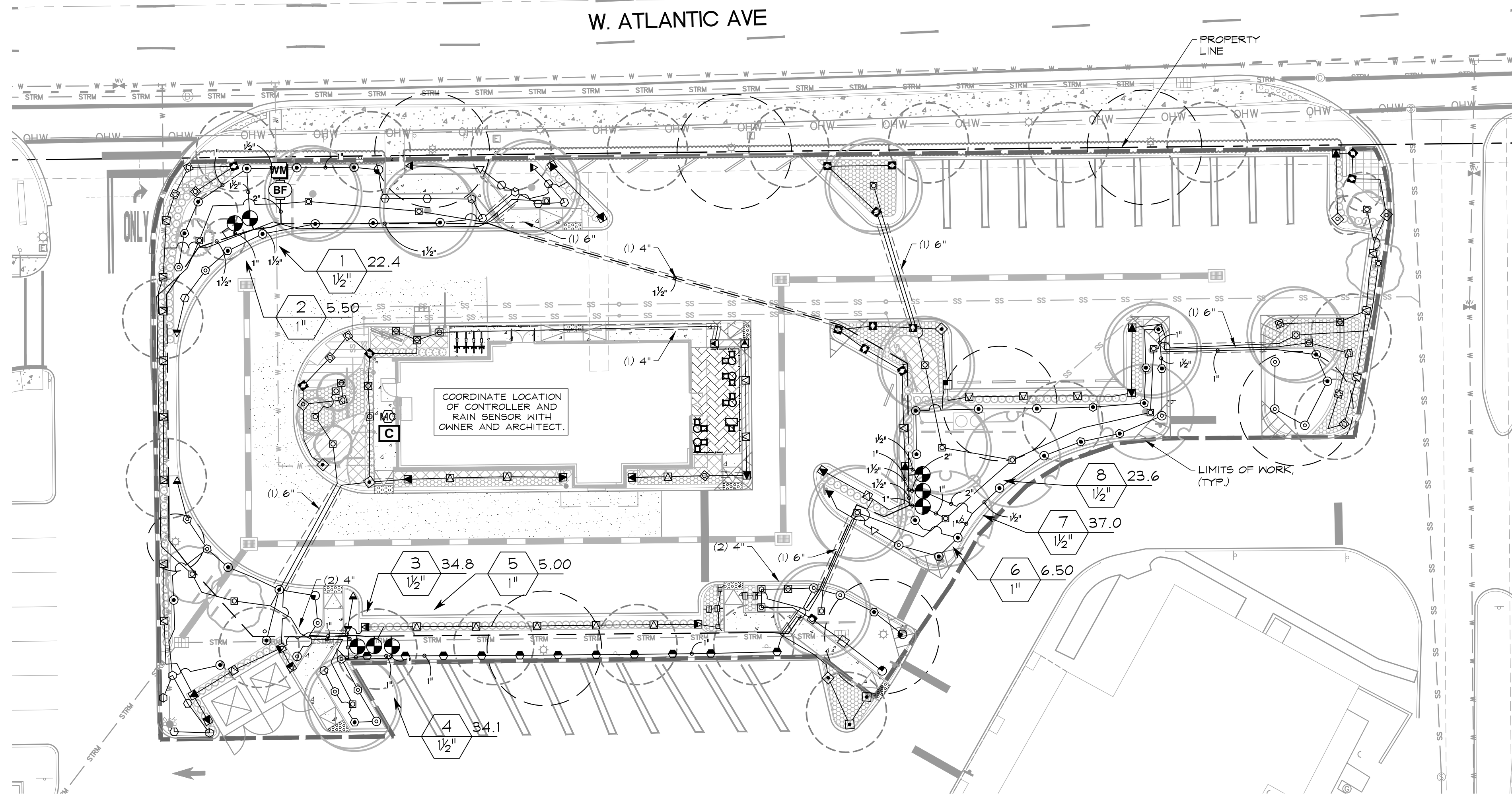
REVISIONS

No.

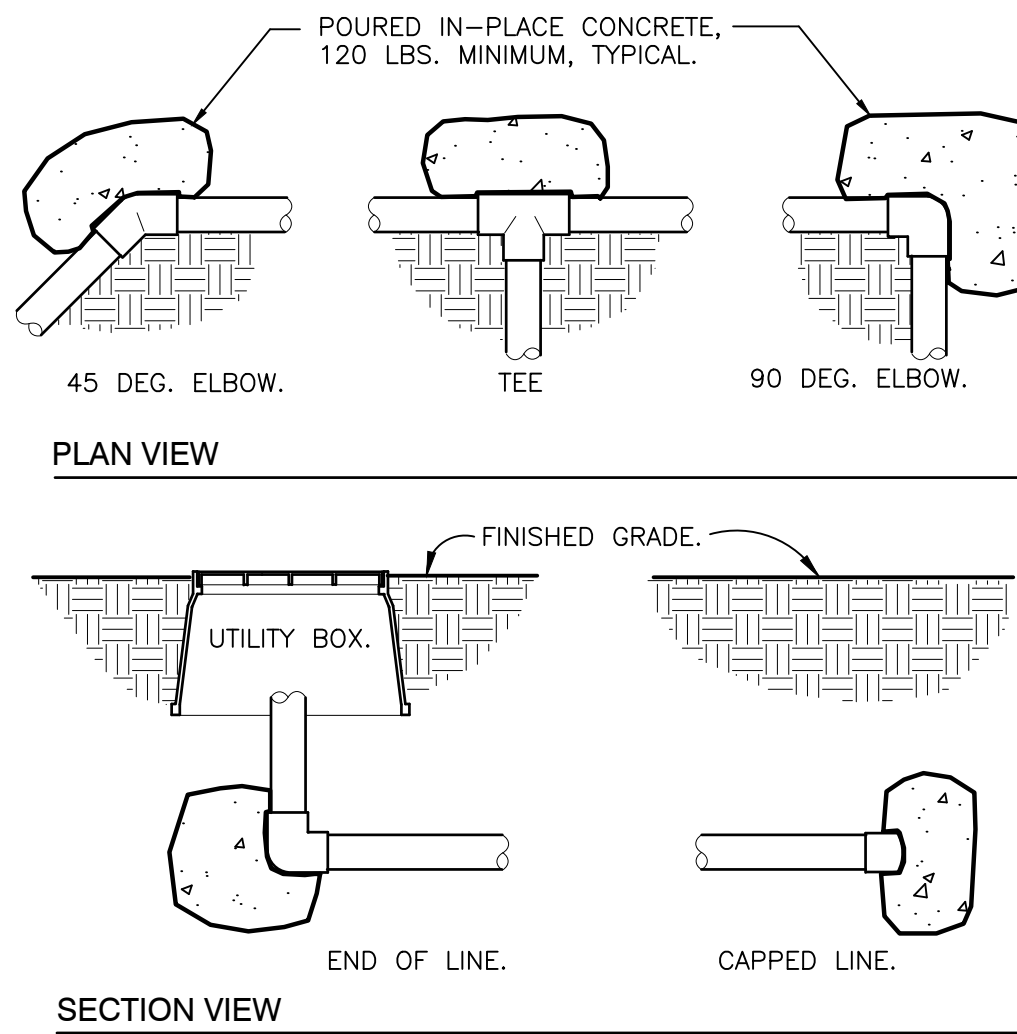
DATE

BY

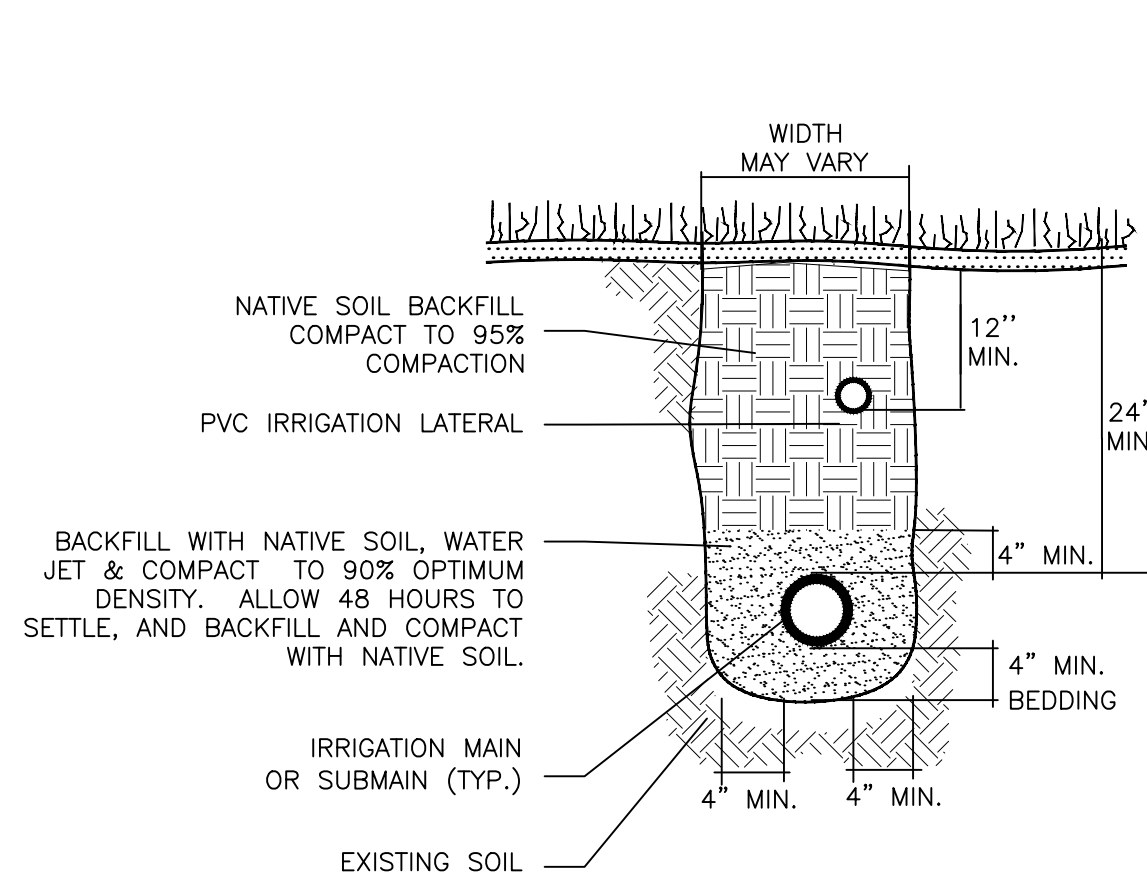
Plotted By: Hargrett, Tom Sheet Set: BED BATH & BEYOND PLAZA Layout: IRI.00 - Irrigation Plan March 16, 2021 05:16:06pm K:\Bed-bath\140548000 - bbb plaza\CADD\plansheets\IRI.00 - IRRIGATION PLAN.dwg
This document, together with the concepts and designs presented herein, is intended only for the specific purpose and client for which it was prepared. Reuse of and improper reliance on this document without written authorization and adaptation by Kimley-Horn and Associates, Inc. shall be without liability to Kimley-Horn and Associates, Inc.



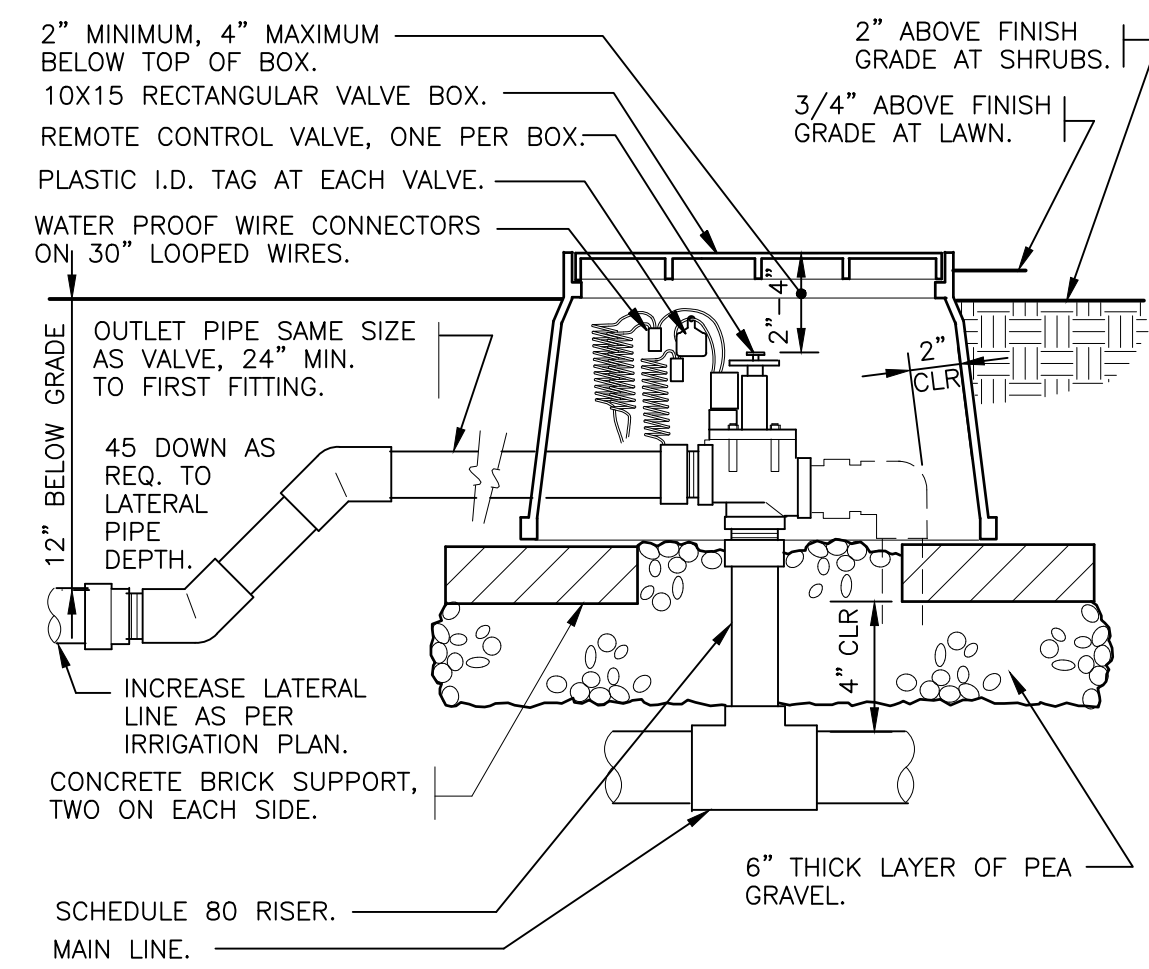
This document, together with the concepts and designs presented herein, is intended only for the specific purpose and client for which it was prepared. Reuse of and improper reliance on this document without written authorization and adaptation by Kimley-Horn and Associates, Inc. shall be without liability to Kimley-Horn and Associates, Inc.



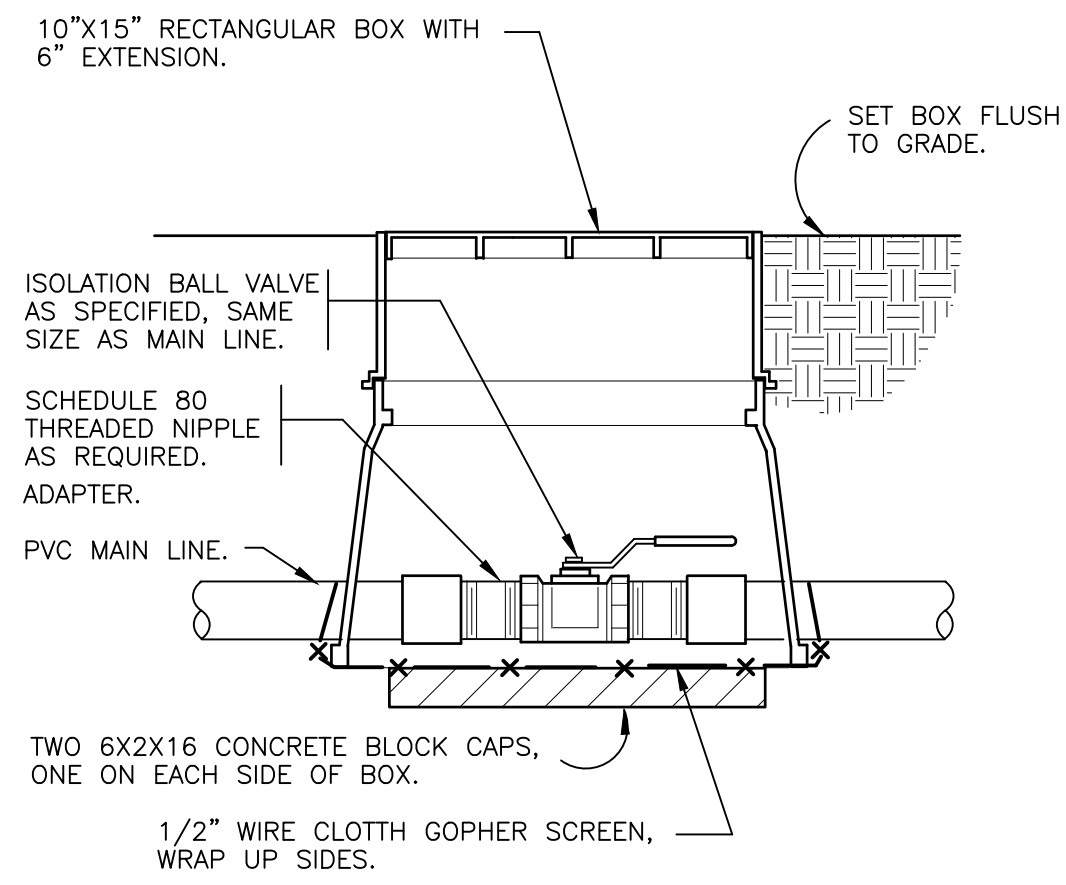
1 THRUST BLOCKING
3/4" = 1'-0"
32 8409.16-01



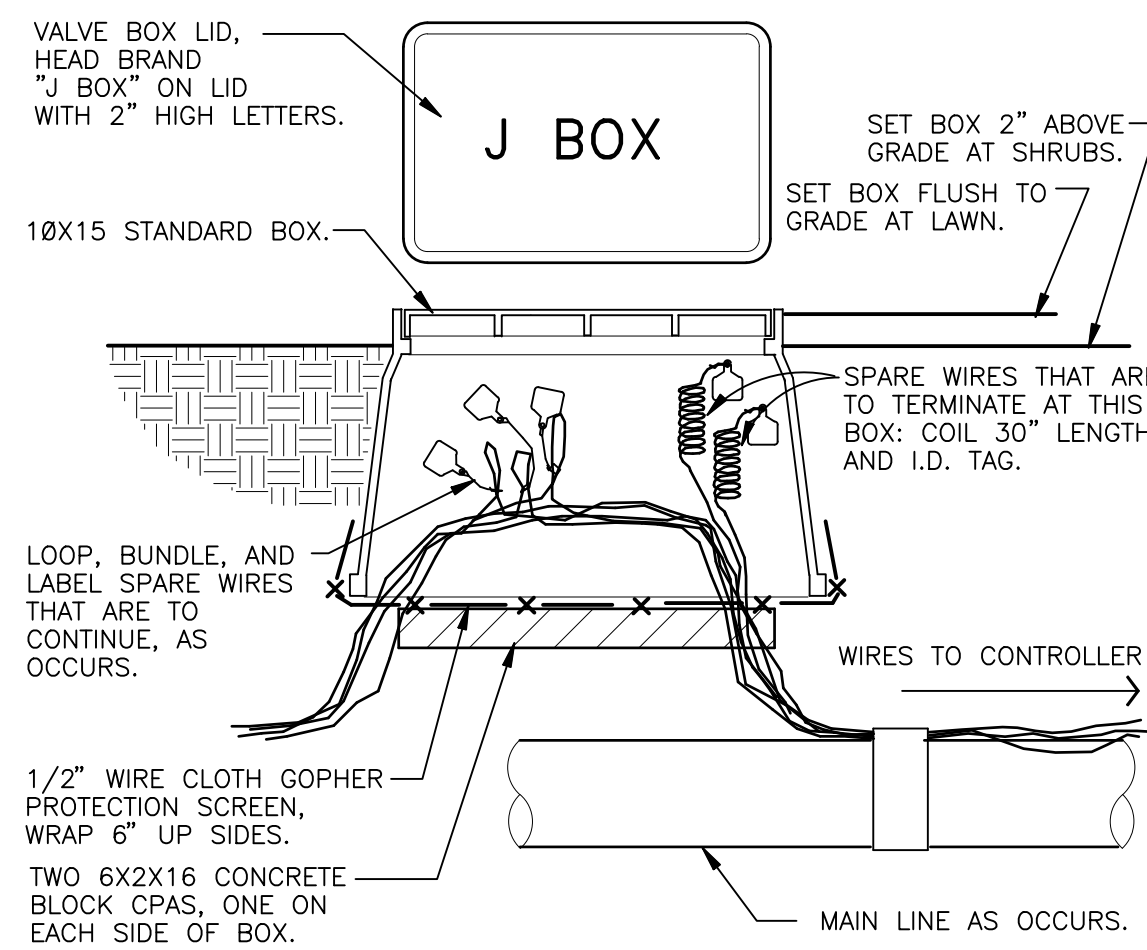
2 TRENCHING DETAIL
NOT TO SCALE
32 8409.16-03



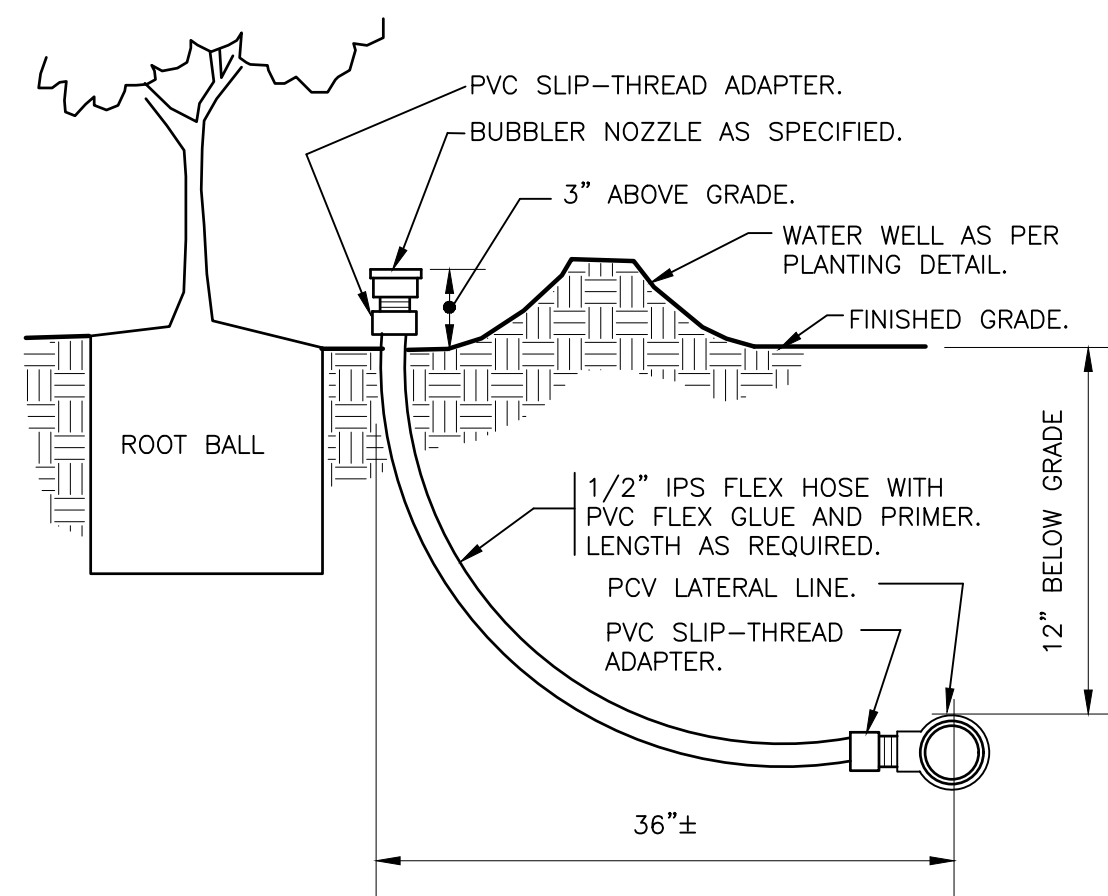
3 ELECTRIC REMOTE CONTROL VALVE
1 1/2" = 1'-0"
32 8406.13-01



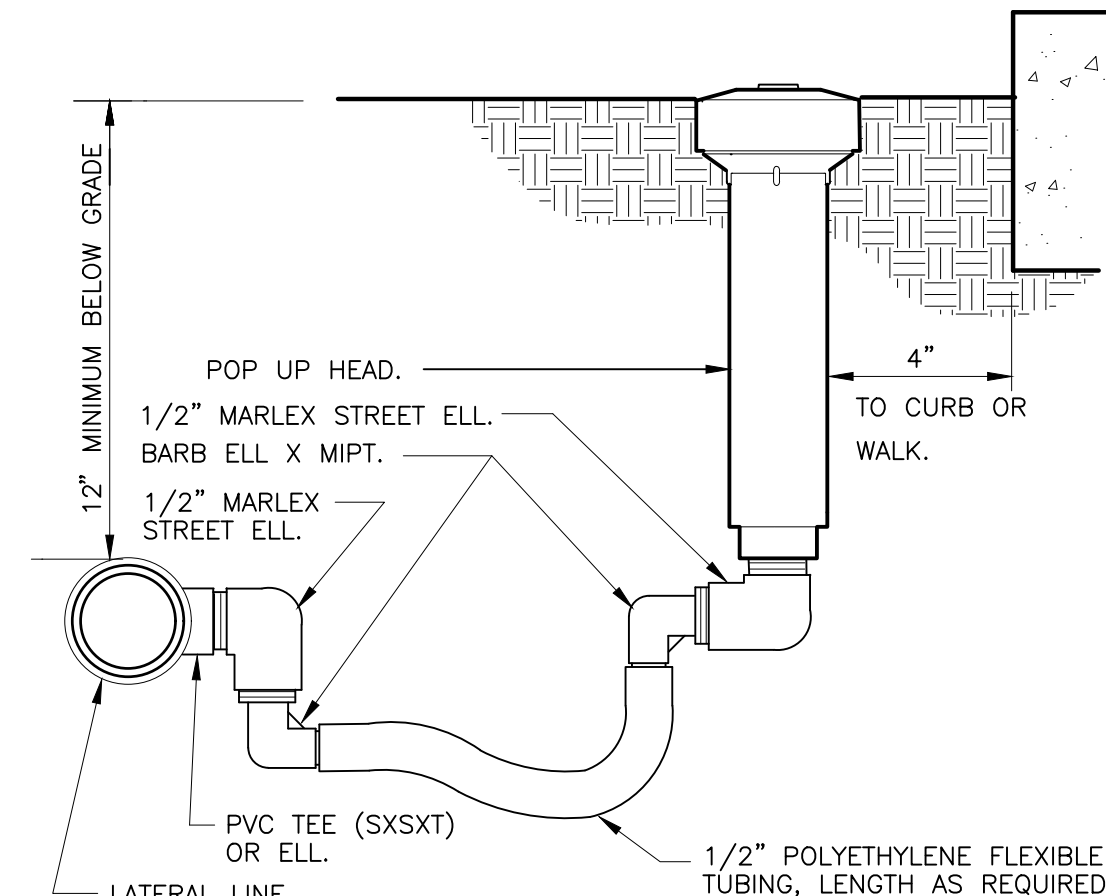
4 BRASS BALL ISOLATION VALVE
1 1/2" = 1'-0"
32 8406.33-02



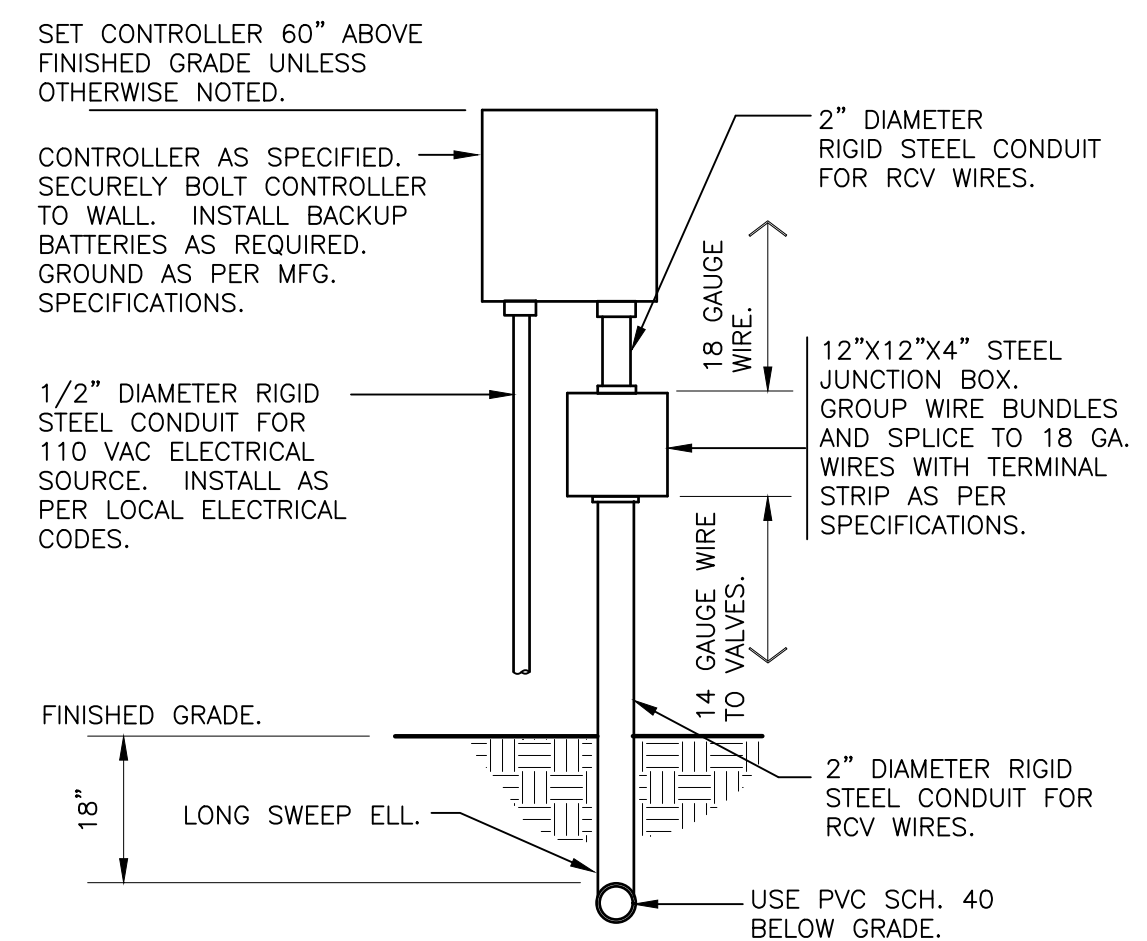
5 WIRE BUNDLE JUNCTION BOX
1 1/2" = 1'-0"
32 8409.14-01



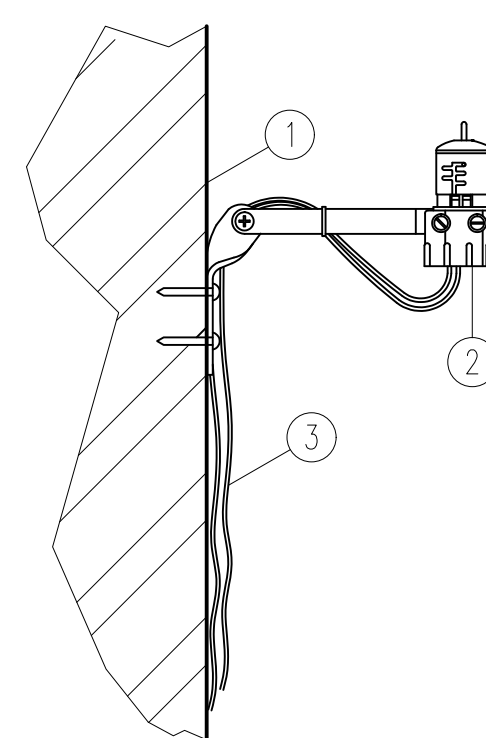
6 BUBBLER ON FLEX HOSE RISER
3" = 1'-0"
DETAIL-FILE



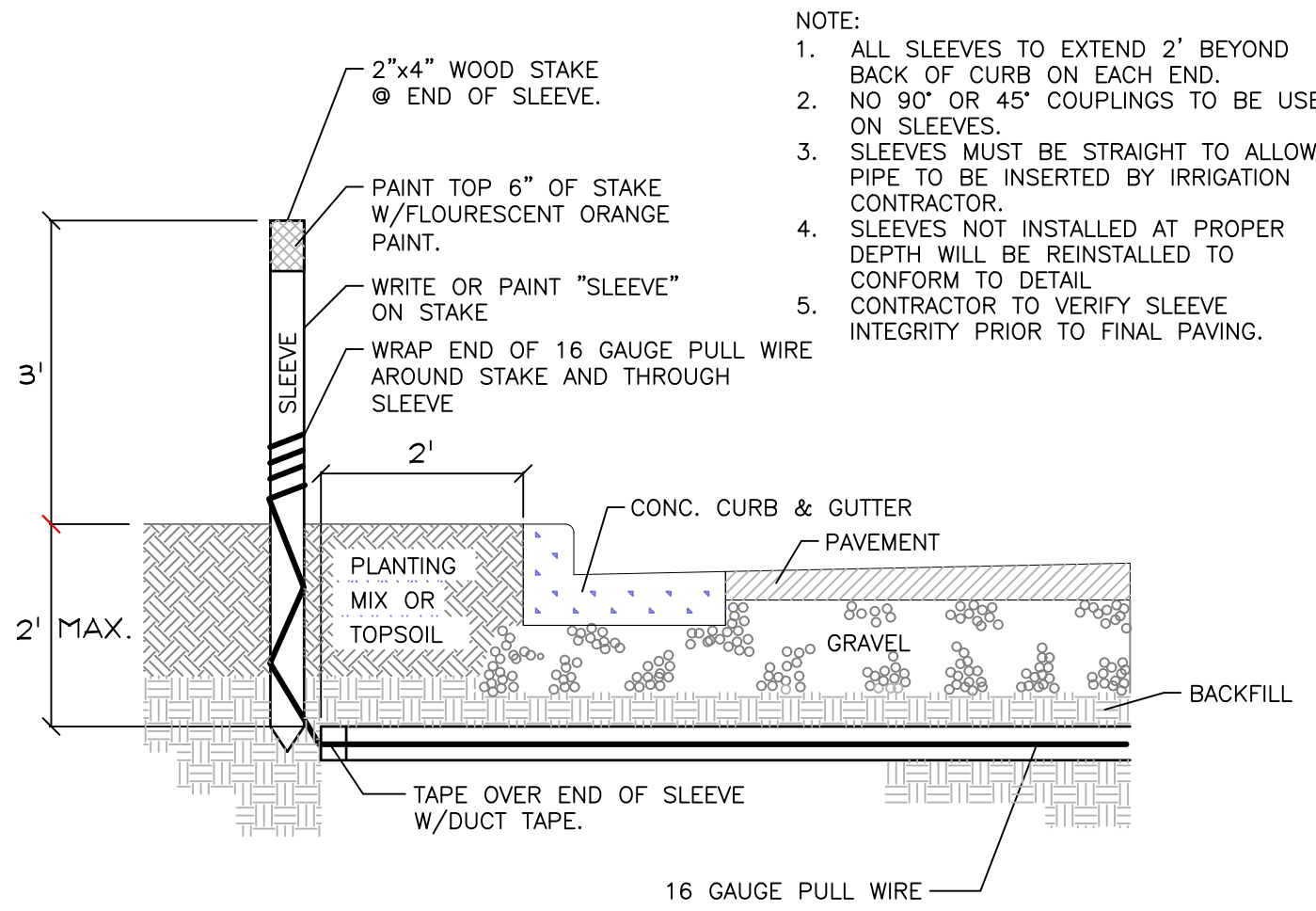
7 POP-UP SPRAY FLEX ASSEMBLY
3" = 1'-0"
32 8403.13-02



8 WALL MOUNT CONTROLLER
1" = 1'-0"
328409.13-02



9 RAIN SENSOR
3" = 1'-0"



10 IRRIGATION SLEEVING
NTS

THIS ITEM HAS BEEN ELECTRONICALLY SIGNED AND SEALED BY JOSHUA D. HORN, P.E., ON 3/16/21 USING A SHA-1 AUTHENTICATION CODE.
PRINTED COPIES OF THIS DOCUMENT ARE NOT CONSIDERED SIGNED AND SEALED AND THE SHA-1 CODE MUST BE VERIFIED ON ANY ELECTRONIC COPIES.

VERTICAL DATUM
ELEVATIONS SHOWN HEREON ARE BASED ON THE NORTH AMERICAN VERTICAL DATUM OF 1988. NAVD '88 ELEV + 1.506' = NGVD '29 ELEVATION

CALL 2 WORKING DAYS BEFORE YOU DIG
IT'S THE LAW! DIAL 811
Know what's below. Call before you dig.
SUNSHINE STATE ONE CALL OF FLORIDA, INC.

KIMLEY-HORN AND ASSOCIATES, INC. 1815 S. GONGERSON PHOENIX, AZ 85045 TEL: 602-998-3344 FAX: 602-998-3345 WWW.KIMLEY-HORN.COM		REVISIONS		DATE	BY
KIMLEY-HORN		No.			
LISCENSED PROFESSIONAL KHA PROJECT 140549000 DATE FEB 2021 SCALE AS SHOWN DESIGNED BY TR DRAWN BY JC CHECKED BY TR DATE 03/16/21		IRICIA C RICHTER, PLA			
IRRIGATION DETAILS		BED BATH & BEYOND PLAZA PREPARED FOR BBB PLAZA ASSOCIATES LTD.		FL	
SHEET NUMBER IR1.10		DELRAY BEACH			

