

GENERAL NOTES

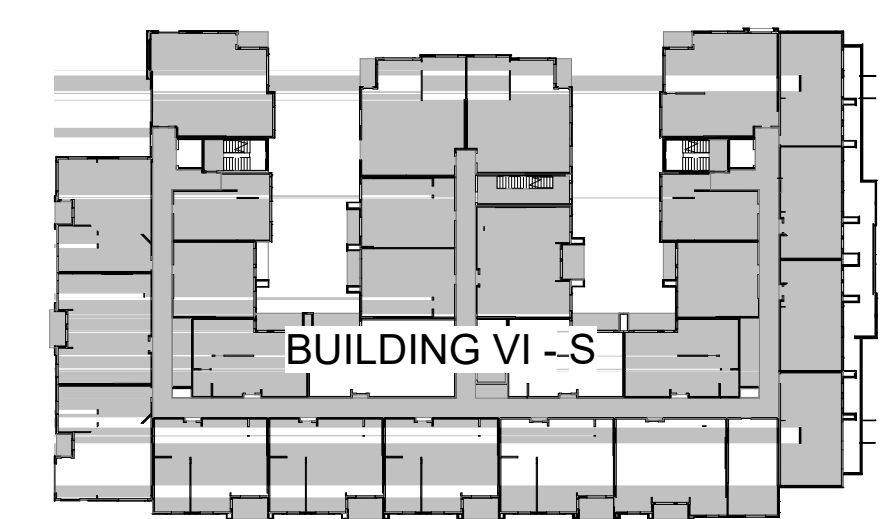
- PROVIDE METAL FLASHING/DRIIP CAP OVER ALL DOORS AND WINDOWS AND AS OTHERWISE INDICATED.
- PROVIDE METAL WALL FLASHING AT ALL ROOF/WALL TRANSITIONS.
- BUILDING SIGNAGE: 8" HIGH LETTERS ON A CONTRASTING BACKGROUND. TWO LOCATIONS MIN. PER BUILDING. COORDINATE FINAL LOCATIONS WITH LOCAL FIRE AUTHORITY.
- PROVIDE STONE J-BOX ACCESSORY @ PLAT TRIM @ SIDING FOR EXTERIOR LIGHT FIXTURE. SEE ELEVATIONS FOR LOCATIONS.
- OVERHEAD DOOR HEADER DIMENSIONS ARE TAKEN FROM THE TOP OF ADJACENT PLAT SLAB (I.E. ELEV. +100.07) - V.I.F.
- ALL ROOF TOP VENTS AND SIMILAR PROTRUSIONS WILL BE PAINTED TO MATCH THE ROOF COLOR.
- ALL BUILDING MOUNTED METERS SHALL BE PAINTED TO MATCH THE WALL COLOR.

EXTERIOR MATERIAL LEGEND	
	S1 STUCCO 1 - VALE MIST BM-HC-1494 OR APPROVED EQUAL
	S2 STUCCO 2 - MORNING DEW BM-HC-1493 OR APPROVED EQUAL
	S3 STUCCO 3 - HAWTHORNE YELLOW GM-HC-4 OR APPROVED EQUAL
	S4 STUCCO 4 - MANCHESTER TAN BM-HC-81 OR APPROVED EQUAL
	S5 STUCCO 5 - CLOUD WHITE BM-967 OR APPROVED EQUAL
	ST SIMULATED STONE STUCCO TEXTURE
	SD SIMULATED WOOD PANELING
	TL DECORATIVE WALL TILE

KEYNOTES	
NO.	NOTE
5.17	VERTICAL STEEL RAILING - POWDER COATED
6.19	DECORATIVE CYPRESS WOOD BRACKET. RE: 8A7-3.17A FOR PROFILE & DIMENSIONS
7.20	GALVALUME METAL ROOF
8.3	EXTERIOR ALUMINUM FRAMED STOREFRONT RE:A3-3 FOR ADDITIONAL INFORMATION
8.4	IMPACT RESISTANT VINYL WINDOW. RE:A9-2.0 FOR ADDITIONAL INFORMATION
9.9	3 COAT STUCCO SYSTEM INSTALLED PER ASSEMBLY REQUIREMENTS.
9.14	GREEN WALL
9.17	1X6 CLOUD WHITE BM-967 STUCCO WINDOW/DOOR TRIM. RE:A7 SERIES FOR ADDITIONAL INFORMATION
9.36	CLOUD WHITE BM-967 STUCCO WINDOW/DOOR TRIM. RE:A7 SERIES FOR ADDITIONAL INFORMATION
9.39	TOP OF EXTERIOR CLADDING WALL CAP WITH STUCCO FINISH TO MATCH FIELD. TYPE 'A' RE: DETAIL 1A7-3.11
9.41	TOP OF EXTERIOR CLADDING WALL CAP WITH STUCCO FINISH TO MATCH FIELD. TYPE 'C' RE: DETAIL 3A7-3.11
9.42	TOP OF EXTERIOR CLADDING WALL CAP WITH STUCCO FINISH TO MATCH FIELD. TYPE 'D' RE: DETAIL 4A7-3.11
9.43	TOP OF EXTERIOR CLADDING WALL CAP WITH STUCCO FINISH TO MATCH FIELD. TYPE 'E' RE: DETAIL 5A7-3.11
9.44	TOP OF EXTERIOR CLADDING WALL CAP WITH STUCCO FINISH TO MATCH FIELD. TYPE 'F' RE: DETAIL 6A7-3.11
9.45	1/4" STUCCO CONTROL JOINT. CONTROL JOINTS TO WRAP ALL BALCONIES UNO
9.46	1" STUCCO CONTROL JOINT. CONTROL JOINTS TO WRAP CORNERS
10.18	WALL MOUNTED CYPRESS WOOD TRELLIS
10.19	RED SPEER HEAD FABRIC AWNING. GO TO SUBMIT SPECIFICATION TO ARCHITECT FOR APPROVAL PRIOR TO INSTALLATION. SEE DETAILS FOR ATTACHMENT
10.22	CURVED DECORATIVE PANEL. PAINTED COMPOSITE
10.26	2" WIDE FIXED COMPOSITE SHUTTERS PAINTED BM-HC-166. REFER TO A7-3.11A FOR ADDITIONAL INFORMATION
22.17	4" X 12" OVERFLOW SCUPPER. LOCATED 2" MIN. - 4" MAX. ABOVE FINISHED ROOF. ALL SCUPPERS TO BE PROVIDED IN COMPLIANCE WITH FBC 2015 1503.4.2.1. RE PLUMBING FOR ADDITIONAL INFORMATION
22.19	4" X 9" THRU WALL SCUPPER BETWEEN 2'-4" ABOVE ADJACENT SURFACE LEVEL. RE PLUMBING FOR ADDITIONAL INFORMATION
23.8	GARAGE EXHAUST RE: MECHANICAL GARAGE PERMIT
26.5	EXTERIOR WALL MOUNTED LIGHT FIXTURE. RE: ELECTRICAL FOR ADDITIONAL INFORMATION
33.2	GAS METER

STUCCO GENERAL NOTES

- TYPICAL 1/4" STUCCO CONTROL JOINTS AT OPENINGS INDICATED AS SHOWN UNLESS OTHERWISE REPRESENTED ON EXTERIOR ELEVATIONS.
- CONTRACTOR TO VERIFY STUCCO CONTROL JOINTS PER ELEVATIONS. CONTROL JOINTS SHALL BE INSTALLED IN WALLS TO DELINEATE AREAS NOT MORE THAN 144 SQ. FT. ON VERTICAL SURFACES AND 100 SQ. FT. ON HORIZONTAL SURFACES. ALL ACCESSORIES MUST BE INSTALLED TO RECEIVE A MINIMUM 7/8" APPLICATION FOR A THREECOAT SYSTEM.
- INSTALL PERFORATED METAL STUCCO CASING BEAD AT THE BOTTOM OF EVERY STUCCO FIELD TERMINATION CONDITION. PER DETAILS.
- CONTRACTOR TO INSTALL CONTROL JOINTS PER MANUFACTURER DETAILS.



2 VI-S - WEST ELEVATION
3/32" = 1'-0"

1 BLDG VI-S EAST ELEVATION
3/32" = 1'-0"

3 BLDG VI-S SOUTH ELEVATION
3/32" = 1'-0"