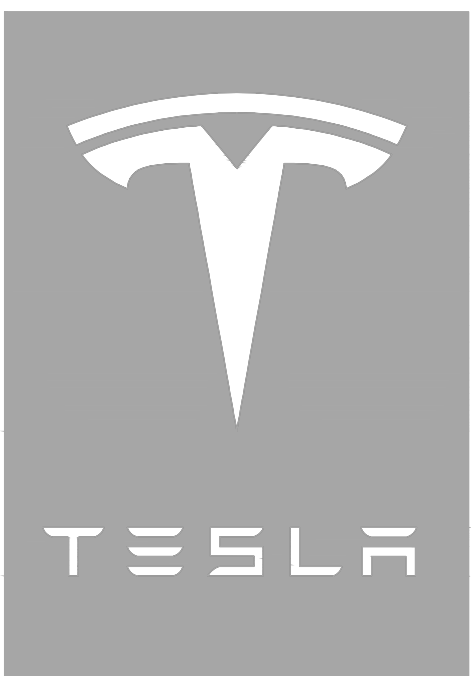


SEE 4/4.1 FOR CONTINUATION



**FREDERICK J. GOGLIA**  
ARCHITECT, NCARB, RIDI  
1950 CRAIG ROAD, SUITE 300  
PH. (314) 415-2400 FAX (314) 415-2300  
ST. LOUIS, MO 63146  
[WWW.FJGCI.COM](http://WWW.FJGCI.COM)

TESLA SALES, SERVICE  
DELIVERY

3000 S. FEDERAL HWY.  
DELRAY BEACH, FL 3348

ISSUE / REVISION

---

02.26.21 75% ISSUE

BEFORE BID AWARD

AFTER BID AWARD

DRAWING TITLE

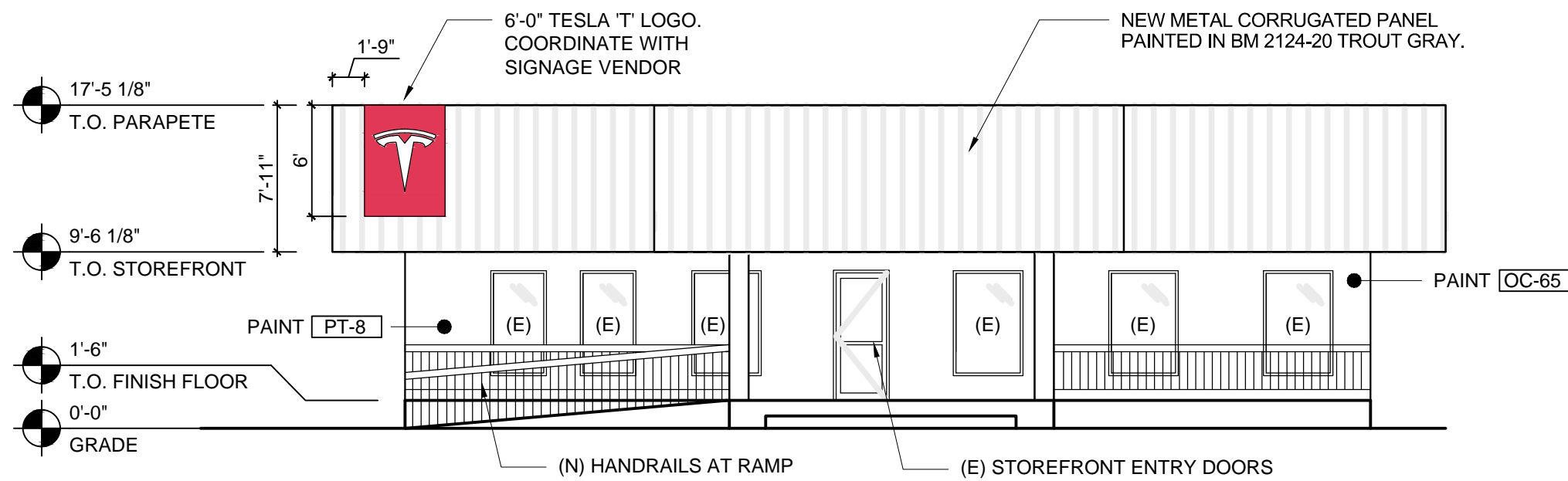
## EXTERIOR ELEVATIONS

SCALE: AS NOTED  
PROJECT NUMBER: 200473

SHEET NUMBER

# A4.01

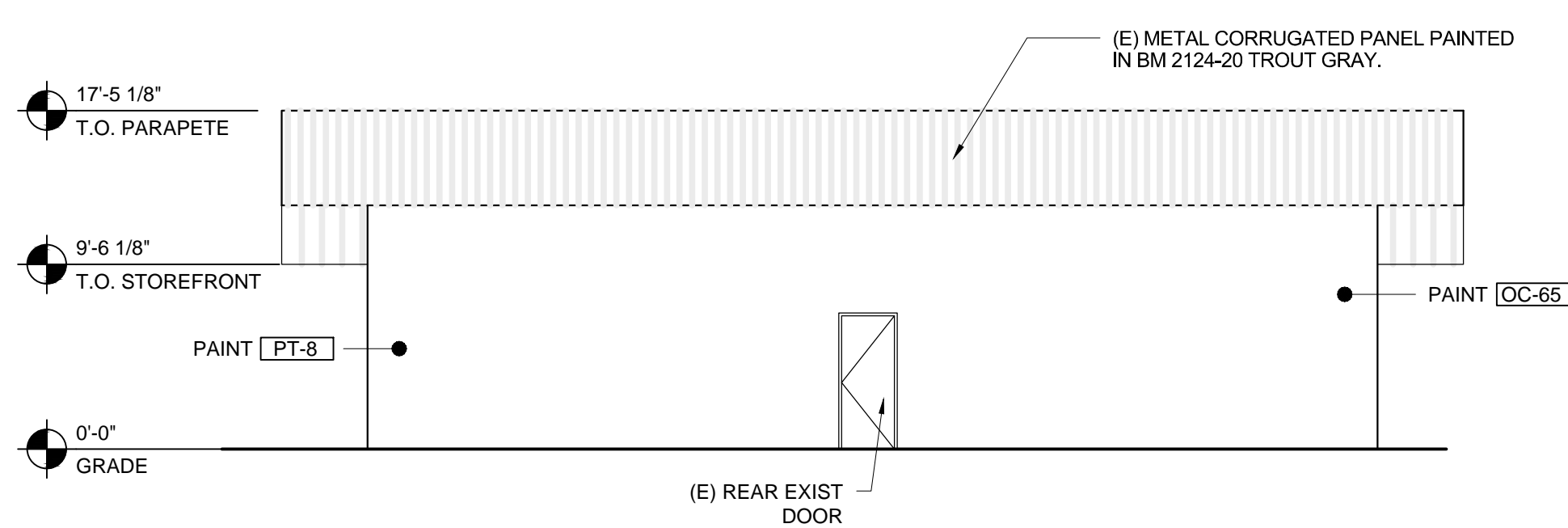
© COPYRIGHT 2019 TESLA MOTORS, INC. ALL RIGHTS RESERVED. PROPRIETARY AND CONFIDENTIAL BUSINESS INFORMATION



EXTERIOR ELEVATION EAST

SCALE:  
1/8"=1'-0"

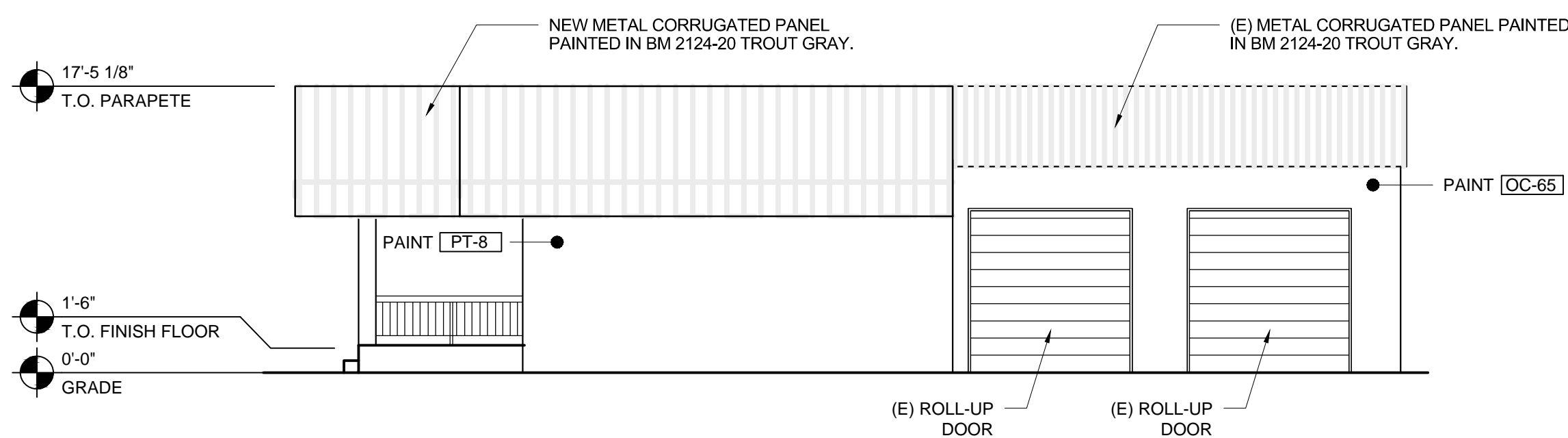
1



EXTERIOR ELEVATION WEST

SCALE:  
1/8"=1'-0"

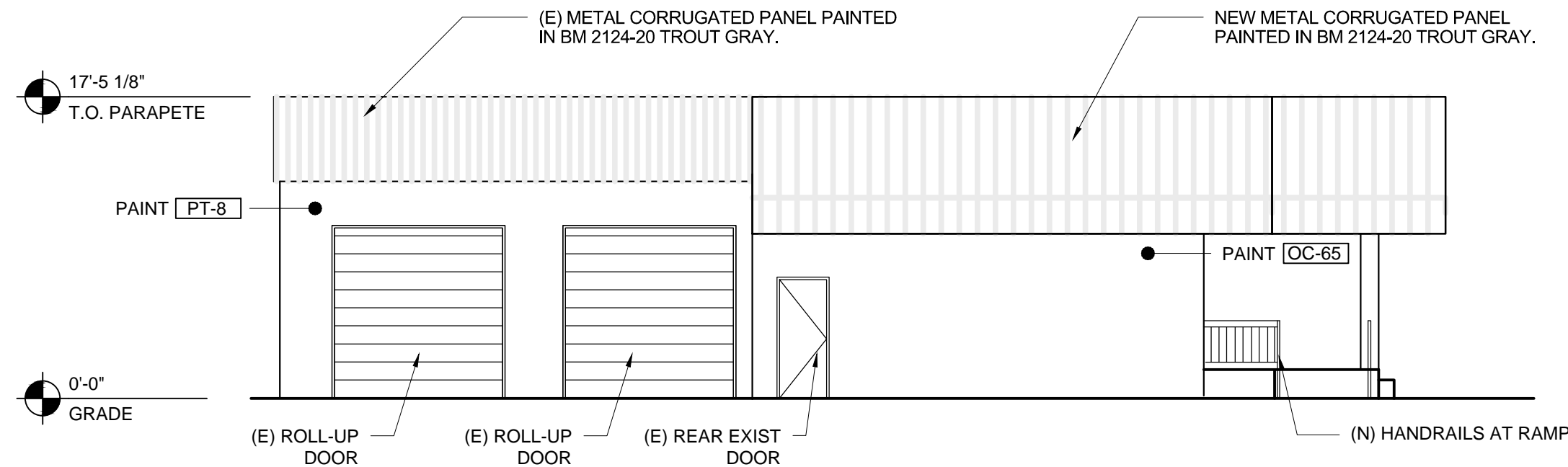
2



EXTERIOR ELEVATION NORTH

SCALE:  
1/8"=1'-0"

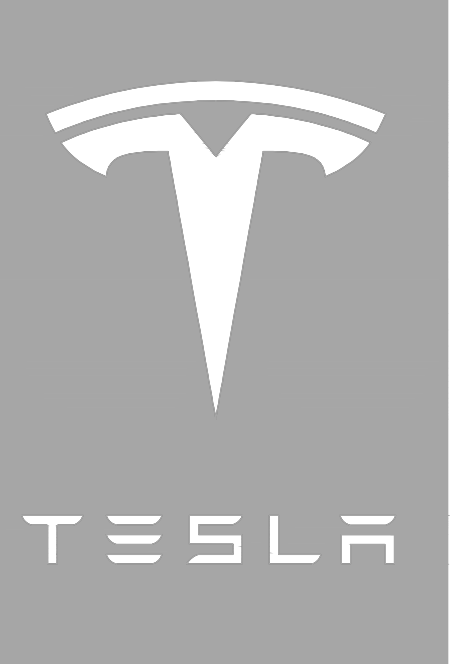
3



EXTERIOR ELEVATION SOUTH

SCALE:  
1/8"=1'-0"

4



**FREDERICK J. GOGLIA**  
ARCHITECT, NCARB, FDI  
1850 CRAIG ROAD, SUITE 300  
PH. (314) 415-2400 FAX (314) 415-2300  
ST. LOUIS, MO 63146  
www.frcy.com

TESLA SALES, SERVICE,  
DELIVERY

3000 S. FEDERAL HWY.  
DELRAY BEACH, FL 33483

ISSUE / REVISION  
02.26.21 75% ISSUE

BEFORE BID AWARD

AFTER BID AWARD

DRAWING TITLE

EXTERIOR  
ELEVATIONS

SCALE: AS NOTED  
PROJECT NUMBER: 200473

SHEET NUMBER

A4.02