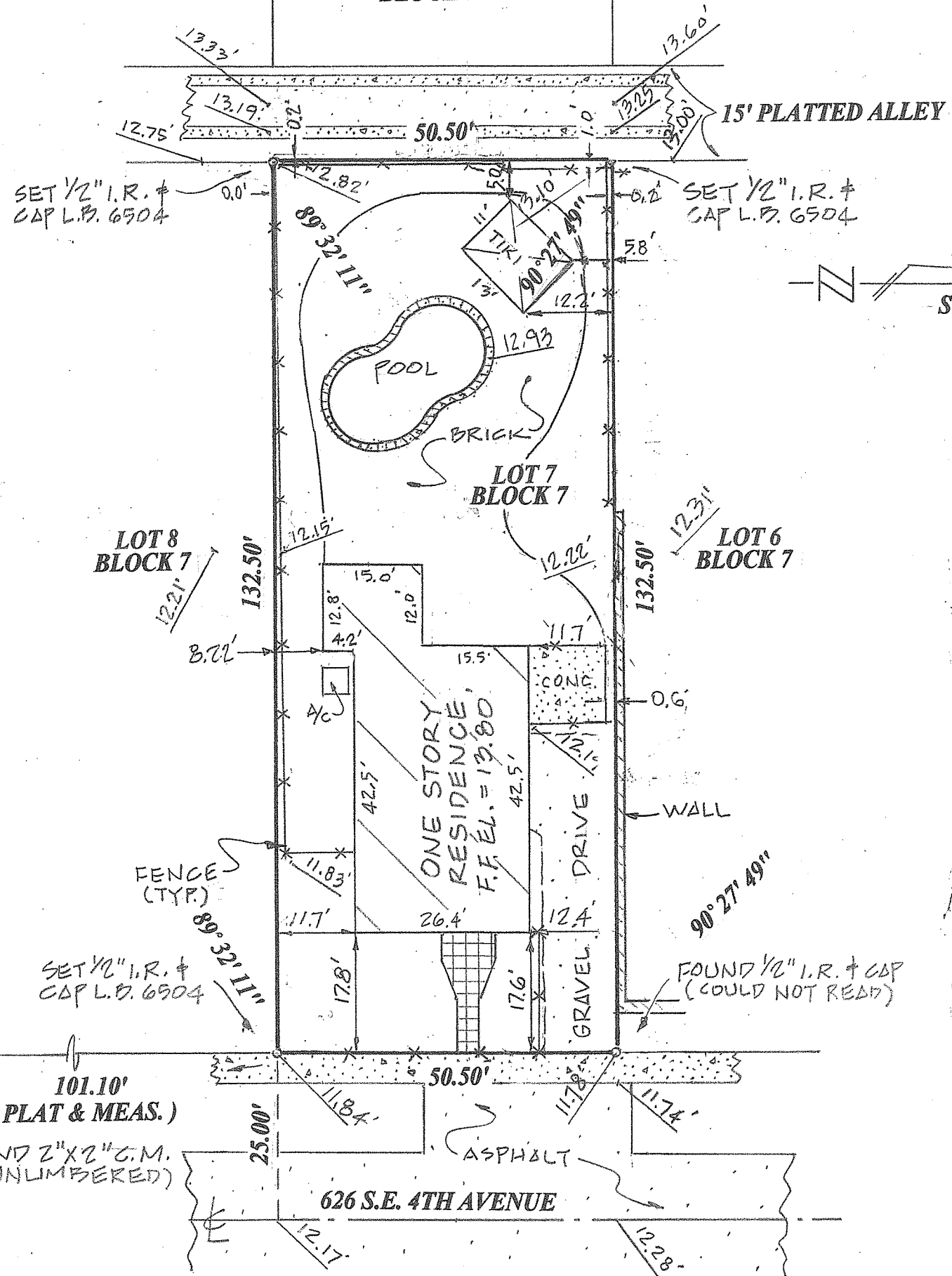


LOT 12  
BLOCK 7

LOT 7, BLOCK 7

# OSCEOLA PARK

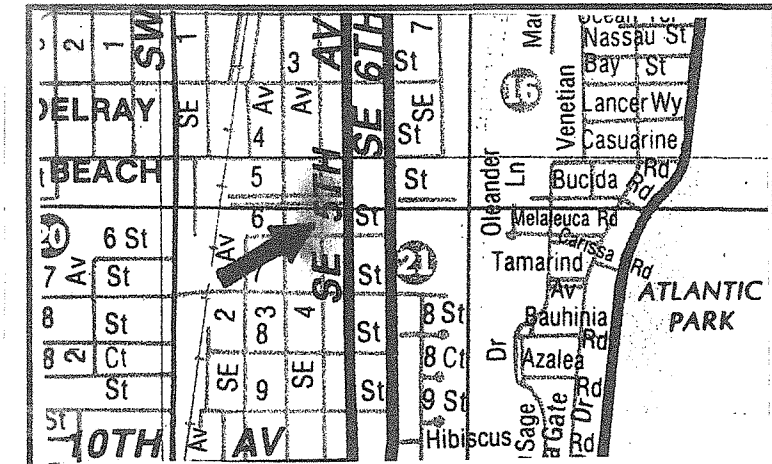
According To The Plat Recorded In Plat Book 3, Page 2, Recorded In The Public Record Of Palm Beach County, Florida. Said Land Situate, Lying, And Being In Palm Beach County, Florida.



SCALE: 1" = 20'

**NOTES:**

- 1) BEARINGS SHOWN HEREON ARE RELATIVE TO PLAT AND ARE ASSUMED.
- 2) NO ABSTRACT OR TITLE SEARCH WAS PERFORMED TO DISCOVER THE EXISTENCE OF ANY EASEMENTS OR RESTRICTIONS OF RECORD.
- 3) ELEVATIONS SHOWN HEREON ARE BASED ON NORTH AMERICA VERTICAL DATUM OF 1988 UNLESS OTHERWISE NOTED.
- 4) NO BELOW GROUND IMPROVEMENTS, FOOTERS, FOUNDATIONS OR UTILITIES HAVE BEEN LOCATED OR SHOWN ON THIS SURVEY.



NORTH

Not to Scale

Vicinity Map

O.R.B. = official record book	Tran. = transformer pad	P.B. = plat book	P = plat	PG. = page
C.B.S. = concrete block structure	F.P. & L = Florida Power & Light	Typ = typical	Ø = power pole	I.R. = iron rod
P.C.C. = point of compound curve	CM = concrete monument	R/W = right-of-way	M = measured	R = radius
P.C.P. = permanent control point	P.R.C. = point of reverse curve	△ = central angle	I.P. = iron pipe	D = deed
P.O.C. = point of commencement	P.I. = point of intersection	⊙ = bearing basis line	RP = radius point	O/S = offset
P.O.B. = point of beginning	P.T. = point of tangency	Asph = asphalt	L = arc length	Conc = concrete
D/E = drainage easement	* = not field measured	M.H. = manhole	CL = centerline	Esmt = easement
C.M.P. = corrugated metal pipe	WPF = wood privacy fence	U/E = utility easement	ALUM. = aluminum	Calc = calculated
R.L.S. = registered land surveyor	Chatt = chatahoochee	CLF = chain link fence	P.C. = point of curvature	L.B. = licensed business
P.S.M. = professional surveyor & mapper		ELEV = elevation	P.R.M. = permanent reference monument	



801 S.E. 6th Ave., Suite 101  
Delray Beach, FL 33483

Phone 561-243-4624  
Fax 243-4869

AUTHORIZATION NUMBER LB6504

I HEREBY CERTIFY THAT THE SKETCH OF BOUNDARY SURVEY SHOWN HEREON MEETS THE STANDARDS OF PRACTICE SET FORTH IN CHAPTER SJ-17-050-052, FLORIDA ADMINISTRATIVE CODE PURSUANT TO SECTION 472.027, FLORIDA STATUTES.

HARRY A BURGESS PLS 5089

Certified To:

LEONARD SURLES  
SENDEGUI LAW GROUP, P.A.  
OLD REPUBLIC NATIONAL TITLE INSURANCE COMPANY

Flood Zone: "X"  
Map No: 12099 0979.F  
Map Date: 10-5-17

Date: 1-11-21  
Job No: 1-16-030 C  
Revised:

Not valid unless sealed with embossed surveyor's seal