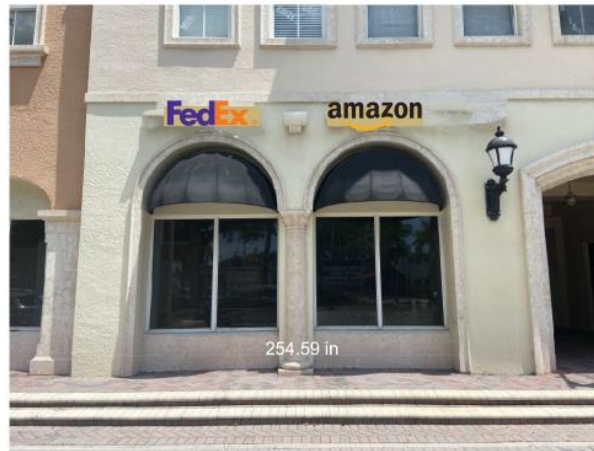


Exterior Signage



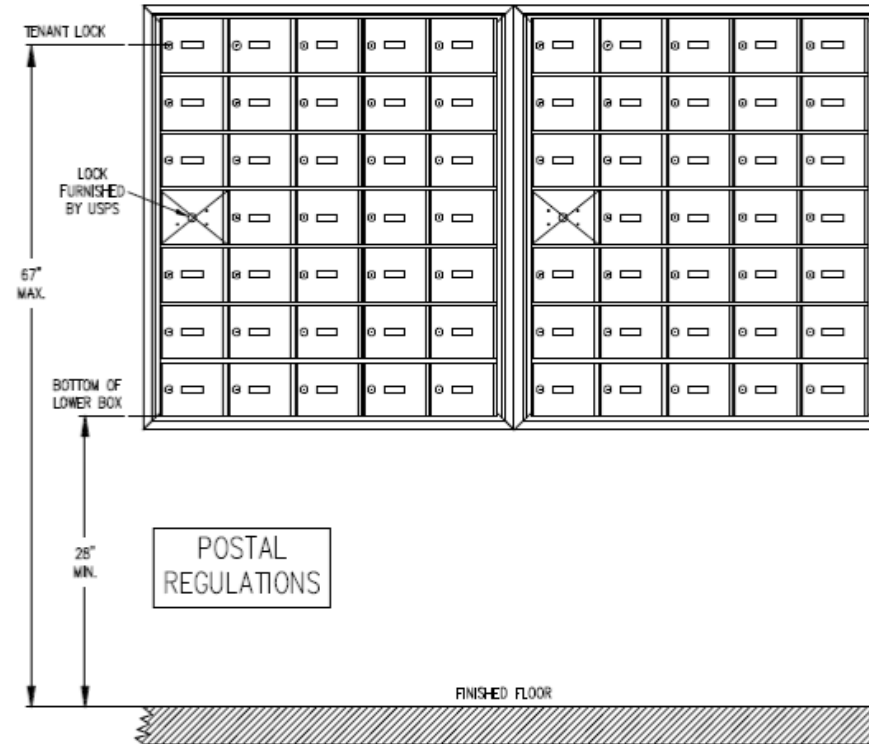
Proposed:

Front lit channel letters on raceway.
FedEx logo to replace "Aloha"
and the Amazon logo to replace "cleaners"

Mailboxes

4B+ Horizontal Mailboxes – 3600 Series FRONT LOADING Installation Instructions

Front View of Mailboxes In Wall



SALSBURY INDUSTRIES

18300 Central Avenue, Carson, CA 90746-4008

Ph: 1-800-624-5269

Int'l Ph: 323-846-6700

Fx: 1-800-624-5299

Int'l Fx: 323-846-6800

www.mailboxes.com

engineering@mailboxes.com

Installation instructions are provided as general guidelines. It is advised that a professional installer be consulted. Salisbury Industries assumes no product assembly or installation liability.
Copyright © 2020 Salisbury Industries. All rights reserved. (Rev. 07, 4/1/2009)

Glass Partitions

Project: Corner Office Delray, LLC
Frame finish: Clear Anodized

By (Signature) _____



COMMERCIAL
GLASS PARTITIONS

Project: Corner Office Delray, LLC
Frame finish: Clear Anodized

By (Signature) _____



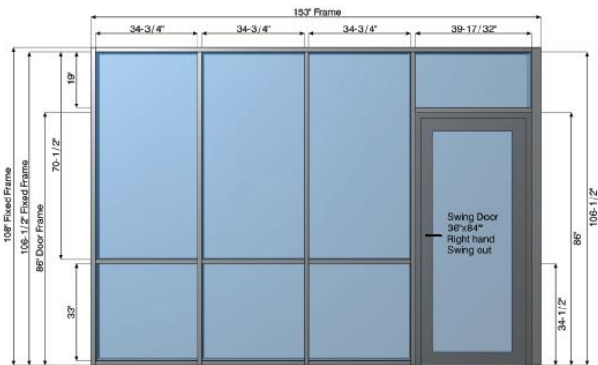
COMMERCIAL
GLASS PARTITIONS

Project: Corner Office Delray, LLC
Frame color: Clear Anodized



COMMERCIAL
GLASS PARTITIONS

Front Wall



Important notices:

- 1) All orders require a 100% payment to start.
- 2) Once approval is given, you are FULLY responsible for any error that may have been overlooked.
- 3) After production has started, all sales are final and you are responsible for any unpaid balances.
- 4) The warranty will not apply to any part of the system that will be altered by the client after product delivery.
- 5) We offer only a sidewalk delivery. Here are two options:
 - one is to rent a forklift;
 - another is to open the crate on the tailgate of the truck and remove contents and the crate itself.

This disclaimer is to be used as a legal binding contract.

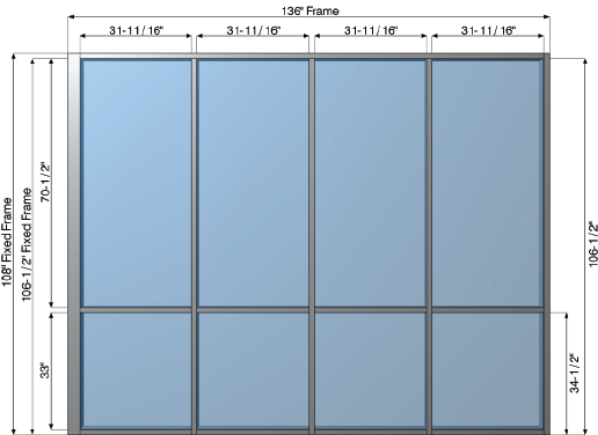
Not valid until signed by the client:

Name _____

By (Signature) _____

Date _____

Side Wall



Important notices:

- 1) All orders require a 100% payment to start.
- 2) Once approval is given, you are FULLY responsible for any error that may have been overlooked.
- 3) After production has started, all sales are final and you are responsible for any unpaid balances.
- 4) The warranty will not apply to any part of the system that will be altered by the client after product delivery.
- 5) We offer only a sidewalk delivery. Here are two options:
 - one is to rent a forklift;
 - another is to open the crate on the tailgate of the truck and remove contents and the crate itself.

This disclaimer is to be used as a legal binding contract.

Not valid until signed by the client:

Name _____

By (Signature) _____

Date _____

TOP VIEW

